

56336-58

8/17/2010

UNITED STATES ENVIRONMENTAL PROTECTION AGENCY

1/4

AUG 17 2010

Richard W. Fresh  
Director Regulatory Affairs  
Suterra LLC  
20950 North East Talus Place  
Bend, Oregon 97701

Subject: CheckMate LBAM Dispenser  
EPA Registration No. 56336-58  
Label Amendment to update the storage and disposal statement per PR Notice 2007-4  
Decision # 435825  
Application Dated: June 16, 2010

Dear Mr. Fresh:

The amendment referred to above, submitted in connection with registration under FIFRA section 3(c)(5), is acceptable provided that you:

1. Submit and/or cite all data required for registration/reregistration of your product under FIFRA section 3(c)(5) when the Agency requires all registrants of similar products to submit such data.
2. Submit three (3) copies of your final printed labeling before you release the product for shipment. Final printed labeling means the label or labeling of the product when distributed or sold. Clearly legible reproductions or photo reductions will be accepted for unusual labels, such as those silk-screened directly onto glass or metal containers or large bags or drum labels.

If these conditions are not complied with, the registration will be subject to cancellation in accordance with FIFRA section 6(b). Your release for shipment of the product bearing the amended labeling constitutes acceptance of these conditions.

If you have any questions contact Ms. Menyon Adams at 703-347-8496 or by email at: [adams.menyon@epa.gov](mailto:adams.menyon@epa.gov). A stamped copy of the label is enclosed for your records.

Sincerely,

Linda A. Hollis, Chief  
Biochemical Pesticides Branch

Pesticides and Pollution  
Prevention Division (751 P)

SYMBOL	56336-58						
SURNAME	Adams						
DATE	8/17/10						

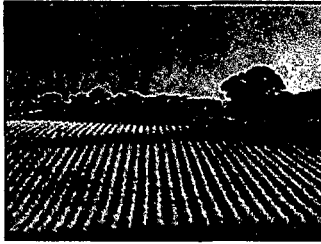
# CheckMate®

# LBAM Dispenser

2/4

**A BIOCHEMICAL PESTICIDE  
FOR MATING DISRUPTION  
OF THE LIGHT BROWN APPLE MOTH  
(*Epiphyas postvittana*)**

FOR ORGANIC PRODUCTION



**Active Ingredients:**  
(E)-11-Tetradecen-1-yl acetate ..... 8.36%  
(E,E)-9,11-Tetradecadien-1-yl acetate ..... 0.44%  
**Other Ingredients:** ..... 91.20%  
**Total:** ..... 100.00%

**Net Weight:** 125 mg of active ingredient per dispenser.

**KEEP OUT OF REACH OF CHILDREN  
CAUTION**

FIRST AID
<b>IF ON SKIN OR CLOTHING:</b> Take off contaminated clothing. Rinse skin immediately with plenty of water for 15-20 minutes. Call a Poison Control Center or doctor for treatment advice.
<b>IF IN EYES:</b> Hold eye open and rinse slowly and gently with water for 15-20 minutes. Remove contact lenses, if present, after the first 5 minutes, then continue rinsing eye. Call a Poison Control Center or doctor for treatment advice.
<b>HOT LINE NUMBER:</b> Have the product container or label with you when calling a Poison Control Center or doctor, or going for treatment. You may contact Suterra LLC at 1-866-326-6737 for emergency medical treatment information. Hours of operation are Monday through Friday 9:00 am to 5:00 pm PST. You may also contact the National Pesticide Information Center at 1-800-858-7378 for emergency medical treatment information. Hours of operation are seven days a week 6:30 am to 4:30 pm PST.

### PRECAUTIONARY STATEMENTS

#### HAZARDS TO HUMANS AND DOMESTIC ANIMALS

**CAUTION:** Harmful if absorbed through the skin. Causes moderate irritation. Avoid contact with eyes, skin, or clothing. Wash thoroughly with soap and water after handling and before eating, drinking, chewing gum, using tobacco, or using the toilet. Remove contaminated clothing and wash before reuse. Wear the appropriate Personal Protective Equipment (PPE).

**Personal Protective Equipment (PPE):** Applicators and other handlers must wear:

- long-sleeved shirt and long pants
- shoes plus socks
- chemical resistant gloves
- protective eyewear

Follow the manufacturer's instructions for cleaning/maintaining PPE. If no such instructions are available for washables, use detergent and hot water. Keep and wash PPE separately from other laundry.

#### ENVIRONMENTAL HAZARDS

For terrestrial use: Do not apply directly to water or to intertidal areas below the mean high water mark. Do not contaminate water when cleaning equipment or disposing of dispensers.

**ACCEPTED**

**AUG 17 2010**

Under the Federal Insecticide, Fungicide,  
and Rodenticide Act, as amended, for  
the pesticide registered under  
EPA Reg. No. 56336-58

### DIRECTIONS FOR USE

It is a violation of Federal law to use this product in a manner inconsistent with its labeling.

CheckMate® LBAM Dispenser is a behavior modifying biochemical product (pheromone) which functions by mating disruption. It is to be used for control of the light brown apple moth (*Epiphyas postvittana* [Walker]) on raisins, table grapes and wine grapes, apple, pear, peach, apricot, citrus, persimmon, avocado, oak, willow, walnut, poplar, cottonwood, alder, pine and eucalyptus. Other shrub or herbaceous hosts are grape, kiwifruit, strawberry, woody berries (blackberry, blueberry, boysenberry, raspberry), rose, camellia, jasmine, chrysanthemum, clover, plantain and other crops where the light brown apple moth is a pest.

**METHOD OF APPLICATION:** The rate of application is 200 dispensers per acre. For enclosed areas such as nurseries or greenhouses the application rate would be equal to one dispenser every 220 square feet. Do not exceed 150 grams of active ingredient per acre per year. Apply dispensers by hand to approximately one-inch branches or canes to secure placement. Where branches or canes are not available attach the dispenser to a pole, stake or wire. Place dispensers at one-third of height of the susceptible crop, or higher but do not exceed canopy height. If there is a persistent and prevalent wind, apply one dispenser to every plant/vine on the upwind side of the treated area and then evenly distribute the remaining dispensers in the block. Wash hands after application. Do not handle other types of insect lures before or after dispenser placement without thoroughly washing hands. Place monitoring traps in the treated area before handling. Monitor treatments carefully. Reseal containers immediately after use. Do not use from damaged, punctured or unsealed containers.

**APPLICATION NOTES:** For best results, apply at the time or shortly before the light brown apple moth begins to emerge in the spring (biofix), or when males are first detected in pheromone traps. This product only affects adult males and will have no effect on females, eggs or immatures. If application occurs following biofix or during the growing season, the crop must be treated with insecticide treatments that will effectively control hatching light brown apple moth until egg laying by previously mated female moths has ceased to occur. In moderate to high insect pressure situations, supplemental insecticide applications during the season will be necessary to provide adequate protection to the developing crop when indicated by monitoring insect infestations with traps and by visual inspection of the crop. These supplemental insecticide applications are to be made based on trap monitoring, field scouting, and appropriate degree-day models for the local growing area and must be timed to control emerging light brown apple moth. Wash hands after application. Do not handle other types of insect lures before or after dispenser placement without thoroughly washing hands. Monitor treatments carefully. Do not use CheckMate LBAM Dispensers from damaged, punctured or unsealed containers.

#### STORAGE AND DISPOSAL

Do not contaminate water, food or feed by storage or disposal.

**PESTICIDE STORAGE:** Store container in cool place until used. Reseal containers immediately after use. Store unused product in a refrigerator or freezer not used for food storage.

**PESTICIDE DISPOSAL:** Wastes resulting from the use of this product may be disposed of on-site or at an approved disposal facility.

**CONTAINER DISPOSAL:** Plastic Containers: Non-refillable container. Do not reuse or refill this container. Triple rinse (or equivalent). Then offer for recycling or reconditioning or puncture and dispose of in a sanitary landfill or by incineration, or if allowed by state and local authorities, by burning. If burned stay out of smoke. Bag/Cardboard Box: Non-refillable container. Do not reuse or refill this container. Dispose of empty bag/cardboard box in a sanitary landfill or by incineration, or if allowed by state and local authorities, by burning. If burned stay out of smoke.

Manufactured by:

# Suterra®

Suterra LLC  
20950 NE Talus Place  
Bend, Oregon, USA 97701  
1-866-326-6737  
Fax (541) 388-3705

EPA Registration No. 56336-58 / EPA Establishment No. 56336-OR-1  
lbamdiseng#2 07/2010 13963

**WARRANTY AND LIMITATION OF DAMAGES**

To the extent consistent with applicable law, Suterra LLC warrants that this material conforms to the chemical description on the label and is reasonably fit for the purposes stated in the Directions for Use. To the extent consistent with applicable law, Suterra LLC neither makes nor authorizes any agent or representative to make any other warranty of fitness or of merchantability, guarantee or representation, express or implied, concerning this material. To the extent consistent with applicable law, Suterra LLC's maximum liability for breach of this warranty shall not exceed the purchase price of this product. To the extent consistent with applicable law, the buyer and user acknowledge and assume all risks and liabilities resulting from the handling, storage and use of this material contrary to label instructions.

**Batch Code:**

**NET CONTENTS:**

**1,000**

**DISPENSERS**

**L  
B  
A  
M  
1  
0  
0  
0**