

56336-6

7-30-2008

1/2

JUL 30 2008

Mr. Richard Fresh
Suterra, LLC.
213 SW Columbia Street
Bend, OR 97702

Subject: Product Name: Checkmate TPW
EPA Registration No. 56336-6
Label Amendment to add EPA phrase and Logo "For Organic Production;" update
precautionary statement, warranty statement, container disposal per PRN 2007-4, and
add batch code number.
Application Dated: June 23, 2008

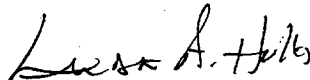
Dear Mr. Fresh:

The amendment referred to above, submitted in connection with registration under FIFRA section 3(c)(5),
is acceptable provided that you:

1. Submit and/or cite all data required for registration/reregistration of your product under FIFRA section 3(c)(5) when the Agency requires all registrants of similar products to submit such data.
2. Submit five (5) copies of your final printed labeling before you release the product for shipment. Final printed labeling means the label or labeling of the product when distributed or sold. Clearly legible reproductions or photo reductions will be accepted for unusual labels, such as those silk-screened directly onto glass or metal containers or large bags or drum labels.

If these conditions are not complied with, the registration will be subject to cancellation in accordance with FIFRA section 6(e). Your release for shipment of the product bearing the amended labeling constitutes acceptance of these conditions. If you have any questions contact Andrew Bryceland at 703-305-6928 or by e-mail at: bryceland.andrew@epa.gov. A stamped copy of the label is enclosed for your records.

Sincerely,



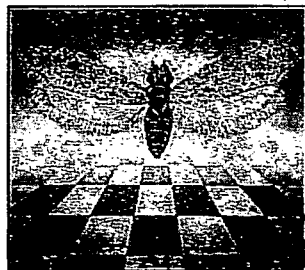
Linda A. Hollis, Chief
Biochemical Pesticides Branch
Biopesticides and Pollution

CONCURRENCES Convention Division (7511P)

SYMBOL	Enclosure							
	7511P							
SURNAME	Bryceland							
DATE	7/18/08							

CheckMate® TPW

FOR ORGANIC PRODUCTION



Active Ingredients:

(E)-4-Tridecen-1-yl acetate 2.84 %

(Z)-4-Tridecen-1-yl acetate 0.09 %

Other Ingredients: 97.07 %

Total: 100.00 %

Net Weight: Active ingredient total of 48 mg pheromone blend per dispenser.

BIOCHEMICAL PHEROMONE FOR MATING DISRUPTION OF TOMATO PINWORM (*Keiferia lycopersicella*)

KEEP OUT OF REACH OF CHILDREN

CAUTION

PRECAUTIONARY STATEMENTS

HAZARDS TO HUMANS AND DOMESTIC ANIMALS

Caution Causes moderate eye and skin irritation. Avoid contact with eyes and clothing. Wash thoroughly with soap and water after handling and before eating, drinking, chewing gum, using tobacco, or using the toilet.

FIRST AID

IF IN EYES: Hold eye open and rinse slowly and gently with water for 15-20 minutes. Remove contact lenses, if present, after the first 5 minutes, then continue rinsing eye. Call a Poison Control Center or doctor for treatment advice.

HOT LINE NUMBER: Have the product container or label with you when calling a Poison Control Center or doctor, or going for treatment. You may also contact 1-866-326-6737.

ENVIRONMENTAL HAZARDS

For terrestrial uses: Do not apply directly to water, or to areas where surface water is present or to intertidal areas below the high-water mark. Do not contaminate water when disposing of equipment washwater or rinsate.

Manufactured by:

Suterra®

Suterra LLC
213 Southwest Columbia St.
Bend, Oregon 97702
1-866-326-6737
Fax (541) 388-3705

EPA Registration No. 56336-6 / EPA Establishment No. 56336-OR-1
Net Contents: 500 Dispensers

DIRECTIONS FOR USE

It is a violation of Federal law to use this product in a manner inconsistent with its labeling. CheckMate® TPW is a behavior modifying biochemical pesticide (pheromone), which functions by mating disruption, to be used in control of tomato pinworm (*Keiferia lycopersicella*).

METHOD OF APPLICATION: For use on tomatoes. **THE RATE OF APPLICATION OF CheckMate TPW IS 200 DISPENSERS PER ACRE (500 DISPENSERS PER HECTARE).**

Each application is effective for 70-75 days. Apply the first application early in the season after the first tomato pinworm moth is detected with a pheromone trap, such as BioLure®. In all cases, make the first application two weeks after transplanting tomato seedlings or within 30 days after direct seeding tomatoes. This product only affects male moths and will have no effect on female moths, eggs or larvae. If application occurs following biofix or during the growing season, the field must be treated with insecticide treatments that will effectively control hatching larvae until egg laying by previously mated female moths has ceased to occur. In moderate to high insect pressure situations, supplemental insecticide applications during the season must be made based on trap monitoring, field scouting, and appropriate degree-day models for the local growing area and must be timed to control emerging larvae. The BioLure Technical Bulletin contains suggestions for trap placement. Monitor for insect infestation with traps and by visual inspection of leaves and fruit. Re-apply CheckMate TPW every 75 days or sooner, as based on monitoring results and field scouting. CheckMate TPW is best used to treat low populations of tomato pinworm and prevent their increase. Treatment of high pest populations may be less effective. **Do not exceed 150 grams of active ingredient per acre per year.**

Apply one dispenser by hand to plants, support poles or wires every 15 feet (4.5 meters). Gently slip the dispenser onto the plant's main stem, or the support poles or wires. Place dispensers at or near the top of the plants, or 3 to 4.5 feet (1 to 1.5 meters) above the ground. Special equipment is not required to apply CheckMate TPW. Best results occur when dispensers are evenly distributed throughout the field. Wash hands after completion. Do not handle other types of insect lures before or after lure placement without thoroughly washing hands. Set tomato pinworm monitoring traps before handling CheckMate TPW. Monitor treatments carefully, especially for secondary pests such as tomato hornworm or tomato fruitworm.

Do not use CheckMate TPW from damaged, punctured or unsealed containers.

Take necessary steps to insure that dispensers do not enter shipping and harvest containers during harvest.

STORAGE AND DISPOSAL

Do not contaminate water, food or feed by storage or disposal.

PESTICIDE STORAGE: Store container in a cool place until used. Re-seal container immediately after use. Store unused product only in refrigerators or freezers not used for food storage.

PESTICIDE DISPOSAL: Wastes resulting from the use of this product may be disposed of on soil or at an approved waste disposal facility.

PESTICIDE CONTAINER DISPOSAL: Plastic containers: Nonrefillable container. Do not reuse or refill this container. Triple rinse (or equivalent). Then offer for recycling or reconditioning, or puncture and dispose of in a sanitary landfill, or incineration, or, if allowed by State and local authorities, by burning. If burned, stay out of smoke.

Bag/Cardboard Box: Nonrefillable container. Do not reuse or refill this container. Dispose of empty bag/cardboard box in a sanitary landfill or by incineration, or, if allowed by state and local authorities, by burning. If burned stay out of smoke.

WARRANTY AND LIMITATION OF DAMAGES

To the extent consistent with applicable law, Suterra LLC warrants that this material conforms to the chemical description on the label and is reasonably fit for the purposes stated in the Directions for Use. To the extent consistent with applicable law, Suterra LLC neither makes nor authorizes any agent or representative to make any other warranty of fitness or of merchantability, guarantee or representation, express or implied, concerning this material. To the extent consistent with applicable law, Suterra LLC's maximum liability for breach of this warranty shall not exceed the purchase price of this product. To the extent consistent with applicable law, the buyer and user acknowledge and assume all risks and liabilities resulting from the handling, storage and use of this material contrary to label instructions.

tpwdiseng#10 07/2008

Batch Code:

2/2

56336-6
15 4770
7/30/08
ACCEPTED
Under the Federal Insecticide, Fungicide and Rodenticide Act, as amended, this pesticide registered under EPA Reg. No.