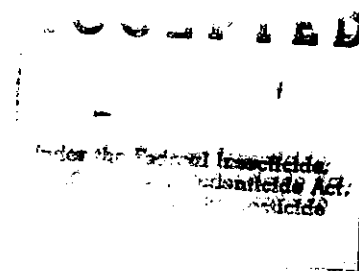
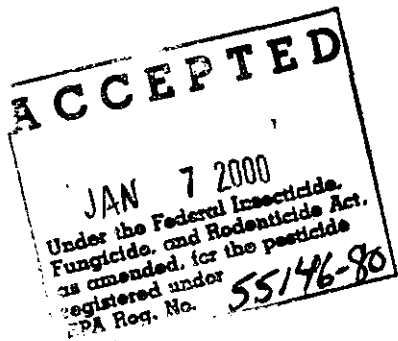


01/06/00



AGTROL STREPTOMYCIN SULFATE WP

Active Ingredient:	
Streptomycin Sulfate*	21.3%
Other Ingredients:	78.7%
Total:	100.0%

*(equivalent to 17% Streptomycin)

NET WEIGHT 2.0 POUNDS

KEEP OUT OF REACH OF CHILDREN

CAUTION

FIRST AID

IF ON SKIN: Wash with plenty of soap and water. Get medical attention.
 IF IN EYES: Flush with plenty of water. Get medical attention if irritation persists.
 IF INHALED: Remove victim to fresh air. If not breathing, give artificial respiration, preferably mouth-to-mouth. Get medical attention.

IMPORTANT: Read the entire Directions for Use before using this product.

Agtrol International

Houston, Texas USA 77074

EPA Reg. No. 55146-

EPA Est. No. xxxxx

PRECAUTIONARY STATEMENTS

HAZARDS TO HUMANS AND DOMESTIC ANIMALS

CAUTION

May cause allergic skin reactions. Do not breathe dust or spray mist. Personal Protective Equipment (PPE): Applicators and other handlers must wear a long-sleeved shirt and long pants, waterproof gloves, shoes plus socks, and a dust/mist filtering respirator (MSHA/NIOSH approval number prefix TC-21C). Follow manufacturer's instructions for cleaning/maintaining PPE. If no such instructions for washables, use detergent and hot water. Keep and wash PPE separately from other laundry. This material is not to be used for medical, veterinary, or human purposes. For 24-hour emergency information, call 1-800-424-9300 (CHEMTREC), day or night.

DIRECTIONS FOR USE

It is a violation of Federal law to use this product in a manner inconsistent with its labeling.

Do not apply this product through any type of irrigation system. Do not apply this product in a way that will contact workers or other persons, either directly or through drift. Only protected handlers may be in the area during application. For any requirements specific to your State or Tribe, consult the agency responsible for pesticide regulation.

AGRICULTURAL USE REQUIREMENTS

Use this product only in accordance with its labeling and with the Worker Protection Standard, 40 CFR part 170. This standard contains requirements for the protection of agricultural workers on farms, forests, nurseries, and greenhouses, and handlers of agricultural pesticides. It contains requirements for training, decontamination, notification, and emergency assistance. It also contains specific instructions and exceptions pertaining to the statements on this label about personal protective equipment (PPE) and restricted-entry interval. The requirements in this box only apply to uses that are covered by the Worker Protection Standard.

Do not enter or allow worker entry into treated areas during the restricted-entry interval (REI) of 4 hours.

PPE required for early entry to treated areas that is permitted under the Worker Protection Standard and that involves contact with anything that has been treated, such as plants, soil, or water is:

- Coveralls
- Waterproof gloves
- Shoes plus socks

USER SAFETY RECOMMENDATIONS

Users should:

Wash hands before eating, drinking, chewing gum, using tobacco, or using the toilet.
 Remove PPE immediately after handling this product. Wash outside of gloves before removing.
 As soon as possible, wash thoroughly and change into clean clothing.

MIXING INSTRUCTIONS

Concentration Desired ppm*	Quantity Streptomycin Per Volume of Water		
	50 gals.	100 gals.	500 gals.
50	2 oz.	4 oz.	20 oz.
60	2.4 oz.	4.8 oz.	1 1/2 lbs.
100	4 oz.	1/2 lb.	2 1/2 lbs.
200	1/2 lb.	1 lb.	5 lbs.

*ppm = parts per million

SPRAY APPLICATION

CELERY

(Florida Area) *Bacterial Blight*. Recommended concentration of 200 ppm. Apply first spray when seedlings are in the 2-leaf stage, when first true leaves appear. For follow-up spray schedule, apply at 4 to 5 day intervals. Continue applications until celery is transplanted in the field.

PHILODENDRON

Bacterial Leaf Rot. Recommended concentration of 200 ppm. Apply first spray as preventative or at first signs of water soaked areas on leaf. For follow-up spray schedule, apply every 4 to 5 days. For curative action, remove all rotted leaves from plant and then spray at 200 ppm every 4 days.

TOMATOES, PEPPERS

Bacterial Spot. Recommended concentration of 200 ppm. Apply first spray when seedlings are in the 2-leaf stage, when first true leaves appear. For follow-up spray schedule, apply at 4 to 5 day intervals. Continue applications until transplanted in the field.

DIEFFENBACHIA CUTTINGS

Bacterial Stem Rot. Recommended concentration of 200 ppm. Soak cuttings in streptomycin solution for 20 minutes. Plant cuttings in sterilized rooting medium. To check spread of *stem rot* in stock plants, use 100 ppm streptomycin spray every 5 to 7 days.

CHRYSANTHEMUMS

Bacterial Wilt. Recommended concentration of 50 ppm. Soak plant cuttings in streptomycin solution for 4 hours; plant as usual.

ROSES

(New Jersey Area) Crown Gall. Recommended concentration of 200 ppm. Remove infected plant. Cut out gall tissue. Soak the root system and cut surfaces on the infected area in streptomycin solution for 15 minutes. Replant rose bushes in soil free of the crown gall organisms. Use 50 ppm streptomycin in watering solution and in foliar sprays applied weekly, starting one week after planting as an adjunct to this treatment.

PEARS

Fire Blight. Recommend 24 to 48 oz. streptomycin per acre (equivalent to 50 to 100 ppm at 600 gals. per acre). For first spray, spray trees at 20% to 30% of bloom. For follow up spray schedule, spray trees every 3 to 4 days during blossom time. Apply sprays after petal fall every 10 to 14 days to control *twig blight*. (This could mean an additional 6 to 8 applications after blossom sprays.) Do not apply within 30 days of harvest.

(West Coast Area) Fire Blight. Recommend 28.8 oz. streptomycin per acre (equivalent to 60 ppm at 600 gallons per acre). Apply first spray at 10% bloom. For follow up spray schedule, repeat at 5 day intervals until all late bloom is over. (This could mean 12 to 15 applications.) Continue to spray at 5 to 7 day intervals to control shoot and fruit infections. Do not apply within 30 days of harvest.

ROSACEAE HOME GARDEN APPLE TREES, HOME GARDEN PEAR TREES, PYRACANTHA (FIRE THORN BUSH)

(California) Fire Blight. Recommended concentration of 100 ppm. Apply streptomycin in foliar and blossom sprays. Apply first spray at start of blossoming period. Continue spray application every 3 to 4 days during blossom time. Apply additional sprays every 5 to 7 days after blossom period when weather favors spread of *fire blight*. Do not apply after fruit is visible.

APPLES

Fire Blight. Recommended concentration of 24 to 48 oz. streptomycin per acre (equivalent to 50 to 100 ppm at 600 gallons per acre). For first spray, spray trees at 20% to 30% bloom. For follow up spray schedule, spray trees every 3 to 4 days during blossom time. Apply sprays after petal fall every 10 to 14 days to control *twig blight*. (This could mean an additional 6 to 8 applications after blossom sprays.) Do not apply within 50 days of harvest.

(West Coast Area) Fire Blight. Recommended concentration of 28.8 oz. streptomycin per acre (equivalent to 60 ppm at 600 gallons per acre). Apply first spray at full bloom. For follow up spray schedule, apply at petal fall and late secondary bloom. Continue to spray at 5 to 7 day intervals to maintain disease control but, not later than 50 days before harvest.

POTATOES

Soft Rot and *Blackleg*. Recommended concentration of 100 ppm. Soak cut seed pieces in streptomycin solutions for several minutes; plant as usual. Do not use treated seed for food or feed purposes.

NOTE: A suitable fungicide (such as Captan or dithiocarbamates) should be used as an adjunct to this treatment for the control of fungal diseases associated with potato seed pieces.

TOBACCO

Wildfire and *Blue Mold*. Recommended concentration of 100 ppm for preventative action. Apply first spray when plants are in the 2 leaf stage or about the size of a dime or when *blue mold* first appears in the area. For follow up spray schedule, repeat application at 5 to 7 day intervals until plants are set in the field. Additional protection may be obtained by spraying field plants with 100 ppm in a weekly spray schedule. Recommended concentration of 200 ppm for curative action. In locations where *wildfire* has been a problem in recent years or where applications have been delayed until disease appears, a spray of 200 ppm streptomycin is recommended. Follow the same schedule as above.

ENVIRONMENTAL HAZARDS

Do not apply directly to water, to areas where surface water is present or to intertidal areas below the mean high water mark.

STORAGE AND DISPOSAL

Do not contaminate water, food, or feed by storage or disposal.

Storage

Keep tightly closed. Storage should be at a cool temperature (less than 80°F) when possible, and with minimum exposure to the atmosphere.

Disposal

Completely empty bag into application equipment. Then dispose of bag in a sanitary landfill, by incineration, or if allowed by State and local authorities, by burning. If burned, stay out of smoke.

Pesticide Disposal

Wastes resulting from the use of this product may be disposed of on site or at an approved waste disposal facility.

Additional information regarding use of Streptomycin may be obtained from your local Agricultural Extension Agent or State Experimental Station.

CONDITIONS OF SALE AND WARRANTY

Read the entire **Conditions of Sale and Warranty** before using this product. If terms are not acceptable, return the unopened product container at once.

WARRANTY STATEMENT

AGTROL INTERNATIONAL warrants that this product conforms to the chemical description on the label and is reasonably fit for the purposes set forth on the label when used according to directions under normal use conditions. **THERE ARE NO OTHER WARRANTIES, EXPRESS OR IMPLIED, INCLUDING A WARRANTY OF FITNESS FOR A PARTICULAR PURPOSE.** This warranty does not extend to the handling or use of this product contrary to label instructions or under abnormal conditions or under conditions not reasonably foreseeable to seller and buyer assumes all risk of any such use.

Agtrol International

Houston, Texas

©1999 Agtrol International