



UNITED STATES ENVIRONMENTAL PROTECTION AGENCY
WASHINGTON, DC 20460

OFFICE OF CHEMICAL SAFETY
AND POLLUTION PREVENTION

September 9, 2022

Leanna Bosarge
Director, Regulatory Affairs
Control Solutions, Inc.
5903 Genoa-Red Bluff
Pasadena, TX 77507-1041

Subject: Notification per PRN 98-10 – Added optional marketing pest graphics
Product Name: CSI 16-183 Carpet Spray
EPA Registration Number: 53883-421
Application Date: 03/10/2022
Decision Number: 584847

Dear Ms. Bosarge:

The Agency is in receipt of your Application for Pesticide Notification under Pesticide Registration Notice (PRN) 98-10 for the above referenced product. The Registration Division (RD) has conducted a review of this request for its applicability under PRN 98-10 and finds that the action requested falls within the scope of PRN 98-10.

The label submitted with the application has been stamped “Notification” and will be placed in our records.

Should you wish to add/retain a reference to the company’s website on your label, then please be aware that the website becomes labeling under the Federal Insecticide Fungicide and Rodenticide Act and is subject to review by the Agency. If the website is false or misleading, the product would be misbranded and unlawful to sell or distribute under FIFRA section 12(a)(1)(E). 40 CFR 156.10(a)(5) list examples of statements EPA may consider false or misleading. In addition, regardless of whether a website is referenced on your product’s label, claims made on the website may not substantially differ from those claims approved through the registration process. Therefore, should the Agency find or if it is brought to our attention that a website contains false or misleading statements or claims substantially differing from the EPA approved registration, the website will be referred to the EPA’s Office of Enforcement and Compliance.

If you have any questions, you may contact Robert Mitchell at 202-566-2842 or via email at mitchell.robert@epa.gov.

Sincerely,

A handwritten signature in black ink, appearing to read "Robert Mitchell".

Page 2 of 2
EPA Reg. No. 53883-421
Decision No. 584847

Elizabeth Fertich
Product Manager 4
Invertebrate-Vertebrate Branch 1
Registration Division
Office of Pesticide Programs

[Text in brackets and italics are notes to the label editor.]

NOTIFICATION

[Text in brackets alone are optional marketing statements or alternative statements.]

53883-421

The applicant has certified that no changes, other than those reported to the Agency have been made to the labeling. The Agency acknowledges this notification by letter dated:

09/09/2022

CSI 16-183 Carpet Spray

[ABN: Pivot Ultra Plus, Pivot Ultra +]

[PRESSURIZED FLEA IGR & ADULTICIDE]
[CARPET AEROSOL AND PREMISE SPRAY]

ACTIVE INGREDIENT:

Etofenprox	1.00%
Pyriproxyfen	0.10%
Prallethrin	0.05%

OTHER INGREDIENTS*: 98.85%

TOTAL: 100.00%

*Contains Petroleum Distillate

Contains no CFCs or other ozone depleting substances. Federal regulations prohibit CFC propellants in aerosols.



ADAMA

Consumer &
Professional
Solutions

Manufactured for:
Control Solutions, Inc.
5903 Genoa Red Bluff
Pasadena, TX 77507

EPA Reg. No: 53883-421
EPA Est. No: _____
Net Contents: [15] [16] oz.

KEEP OUT OF REACH OF CHILDREN

CAUTION

[Alternate text – all or in part: See side panel(s) for First Aid, Precautionary Statements, Directions for Use and Storage and Disposal.]

FIRST AID	
IF IN EYES	<ul style="list-style-type: none"> • Hold eye open and rinse slowly and gently with water for 15-20 minutes. • Remove contact lenses, if present, after the first 5 minutes, then continue rinsing. • Call a poison control center or doctor for treatment advice.
IF ON SKIN OR CLOTHING:	<ul style="list-style-type: none"> • Take off contaminated clothing. • Rinse skin immediately with plenty of water for 15-20 minutes. • Call a poison control center or doctor for treatment advice.
IF SWALLOWED:	<ul style="list-style-type: none"> • Immediately call a poison control center or doctor. • Do not induce vomiting unless told to do so by a poison control center or doctor. • Do not give any liquid to the person. • Do not give anything by mouth to an unconscious person.
Have the product container or label with you when calling a poison control center or doctor or going for treatment. You may also contact SafetyCall® (866) 897-8050 for emergency medical treatment information.	
NOTE TO PHYSICIAN: Contains a petroleum distillate – vomiting may cause aspiration pneumonia.	

[Note to label editor: Table format will be used if space allows for the first aid section; otherwise, paragraph format will be used.]

PRECAUTIONARY STATEMENTS

HAZARDS TO HUMANS AND DOMESTIC ANIMALS

CAUTION: Causes moderate eye irritation. Avoid contact with skin, eyes or clothing. Wash thoroughly with soap and water after handling and before eating, drinking, chewing gum, using tobacco or using the toilet.

ENVIRONMENTAL HAZARDS

This pesticide is highly toxic to fish and aquatic invertebrates. To protect the environment, do not allow pesticide to enter or run off into storm drains, drainage ditches, gutters or surface waters. Applying this product in calm weather when rain is not predicted for the next 24 hours will help ensure that wind or rain do not blow or wash pesticide away from the treatment area.

PHYSICAL HAZARDS

Flammable. Contents under pressure. Keep away from heat, sparks and open flame. Do not puncture or incinerate containers. Exposure to temperatures above 130°F may cause bursting. Do not apply this product around electrical equipment due to the possibility of shock hazard.

DIRECTIONS FOR USE

It is a violation of federal law to use this product in a manner inconsistent with its labeling.

READ ALL DIRECTIONS COMPLETELY BEFORE USE.

For use in and on buildings and structures such as homes, apartments, hotels, offices, stores, warehouses, schools, nursing homes, hospitals, industrial buildings, vessels, rail cars, trucks, trailers, and aircraft (except cabins).

CSI 16-183 Carpet Spray kills fleas, ticks, cockroaches, ants (excluding Carpenter, Harvester, and Pharaoh ants), silverfish, crickets, spiders, sowbugs and carpet beetles. *{A minimum of one pest will be listed.}*

USE RESTRICTIONS

- Do not apply to classrooms when in use.
- Do not use in aircraft cabins.
- Do not apply to patient rooms in hospitals and nursing homes while occupied.
- Cover aquariums and fish bowls and remove birds from area prior to treating.
- Vacate areas to be treated and do not reoccupy or contact treated surfaces until dry.
- Do not apply in food/feed areas of commercial structures (i.e. food/feed handling facilities). In the home, cover or remove exposed food, in the treatment area, prior to application. Cover all food processing surfaces and utensils in the treatment area, or thoroughly wash before reuse.
- **Do not treat pets with this product.** Treat pets with a product registered for use for flea control on animals in conjunction with this treatment.

PRODUCT INFORMATION

CSI 16-183 Carpet Spray kills both adult and pre-adult fleas with a combination of adulticides and an insect growth regulator. Adult fleas may be seen in the treated areas when brought in on infested animals or when adults emerge from pupal cases.

In transportation equipment, certain plastics may be whitened or dulled as a result of application. Apply only to carpets and cloth upholstered areas, or test an inconspicuous area before treating.

APPLICATION INSTRUCTIONS

FOR INDOOR USE:

Prior to treatment, thoroughly vacuum all carpeting, upholstered furniture and along baseboards, under furniture and in closets.

SHAKE WELL BEFORE USE. Use at the rate of [[16][15]] oz [one can] for up to [[2,096][1,965]] ft² [8 oz [half can] for up to 1,048 ft²], applying in a sweeping motion at a speed of 1 ft/sec. Avoid wetting or saturating carpets or furniture. A fine mist that is evenly applied is sufficient for the product to work. Avoid spraying wood furniture, floors or trim as water spotting may occur. Prior to treatment, make a small test application to desired surfaces in an out of the way area to determine if staining or spotting will occur.

FLEAS: Treat all areas that may harbor insects such as, rugs, carpets, upholstered furniture, pet beds, points where carpet and wall meet, draperies, around and under furniture or other stored items. Hold can at arms length and direct spray toward the area to be treated. Use a sweeping motion to apply product and back away from treated area while holding the can 24" away from the surface being treated. An area of 80-100 ft² can be treated in approximately 10 seconds with this product. When treating upholstered furniture, treat under cushions and in seams and folds. Reapply as necessary.

SPIDERS (including Black Widow and Brown Recluse): Apply directly to spiders . Spray 36 inches (3 feet) away for one second. Before applying, consider the surfaces that spray may contact if concerned about potential staining.

TICKS: Apply directly to ticks in carpet or flooring; directly apply to wall/floor junction and upper wall areas as needed. Spray 24 inches (2 feet) away for one second. Thoroughly treat pet resting areas such as furniture and carpeted areas. Use care when applying to hardwood floors and only use a light mist to those areas.

COCKROACHES, ANTS (excluding Carpenter, Harvester and Pharaoh ants), CRICKETS, SILVERFISH, SOWBUGS AND CARPET BEETLES: Apply directly to exposed insects in areas where these pests are found or may hide, including dark corners of rooms and closets, cracks and crevices, along baseboards and door sills and frames, behind sinks, stoves, refrigerators, and cabinets and around garbage cans, plumbing and other utility installations. Directly spray pests driven out of hiding places. Spray ant trails, nests and points of entry directly contacting ants. Reapply as necessary.

PET BEDDING: Treat pet bedding and resting places. Apply a uniform application of CSI 16-183 Carpet Spray to nearby cracks and crevices, along and behind baseboards, window and door sills, and localized areas of floors directly contacting fleas, as these are primary hiding places for fleas. Old pet bedding must be removed and replaced with clean fresh bedding after treatment.

INDOOR KENNELS: Remove pets before spraying. Spray CSI 16-183 Carpet Spray from 24" away from surface being treated. Apply with a smooth back-and-forth motion. A fine mist that is evenly applied is sufficient for the product to work. Re-treat as necessary to control fleas.

FOR OUTDOOR USE:

Point spray nozzle away from face. Hold can on slight downward angle. For best results, spray when air is calm. Spray with wind if breeze is blowing.

PESTS ON OUTSIDE SURFACES OF BUILDINGS (Ants (excluding Carpenter, Harvester and Pharaoh ants), Cockroaches, Crickets and Sowbugs): Spray pests directly on outside surfaces of building. For ants (excluding Carpenter, Harvester and Pharaoh ants), spray ants directly or around nests hidden under steps, brickwork, concrete, etc. Break apart accessible nests and spray directly on ants and around debris. CSI 16-183 Carpet Spray may be applied as a spot, crack and crevice or void treatment to outside surfaces directly contacting listed insects. Do not spray as a broadcast spray. Spray outside surfaces where listed insects are congregating. Spray areas include screens, window frames, eaves, porches, patios, garages and refuse dumps. Repeat treatment as necessary.

STORAGE AND DISPOSAL

Do not contaminate water, food or feed by storage or disposal.

PESTICIDE STORAGE: Store in a cool, dry area away from heat or open flame.

PESTICIDE DISPOSAL: Wastes resulting from use of this product may be disposed of on site or at an approved waste disposal facility.

CONTAINER HANDLING: Do not puncture or incinerate! Empty container by using the product in accordance with the label directions. **If empty:** Offer empty container for recycling, if available, or place in trash if allowed by state and local regulations. **If partly full:** Contact your local solid waste agency for disposal instructions.

[Optional Warranty Statement 1]

NOTICE: Read the entire Directions for Use and Conditions of Sale and Limitation of Warranty and Liability before buying or using this product. If the terms are not acceptable, return the product at once, unopened, and the purchase price will be refunded.

WARRANTY STATEMENT

The Directions for Use of this product must be followed carefully. It is impossible to eliminate all risks inherently associated with the use of this product. Ineffectiveness or other unintended consequences may result because of such factors as manner of use or application, weather, presence of other materials or other influencing factors in the use of the product, which are beyond the control of Control Solutions, Inc. or Seller. To the extent consistent with applicable law, all such risks shall be assumed by Buyer and User, and Buyer and User agree to hold Control Solutions, Inc. and Seller harmless for any claims relating to such factors.

To the extent consistent with applicable law, Control Solutions, Inc. warrants that this product conforms to the chemical description on the label and is reasonably fit for the purposes stated in the Directions for Use, subject to the inherent risks referred to above, when used in accordance with directions under normal use conditions. This warranty does not extend to the use of this product contrary to label instructions, or under abnormal conditions or under conditions not reasonably foreseeable to or beyond the control of Seller or Control Solutions, Inc., and Buyer and User assume the risk of any such use. CONTROL SOLUTIONS, INC. MAKES NO WARRANTIES OF MERCHANTABILITY OR OF FITNESS FOR A PARTICULAR PURPOSE NOR ANY OTHER EXPRESS OR IMPLIED WARRANTY EXCEPT AS STATED ABOVE.

To the extent consistent with applicable law, **IT IS CONTROL SOLUTIONS INC., AND SELLERS INTENTION THAT** in no event shall Control Solutions or Seller be liable for any incidental, consequential or special damages resulting from the use or handling of this product. **THE EXCLUSIVE REMEDY OF THE USER OR BUYER, AND THE EXCLUSIVE LIABILITY OF CONTROL SOLUTIONS, INC., AND SELLER FOR ANY AND ALL CLAIMS, LOSSES, INJURIES OR DAMAGES (INCLUDING CLAIMS BASED ON BREACH OF WARRANTY, CONTRACT, NEGLIGENCE, TORT, STRICT LIABILITY OR OTHERWISE) RESULTING FROM THE USE OR HANDLING OF THIS PRODUCT, SHALL BE THE RETURN OF THE PURCHASE PRICE OF THE PRODUCT OR, AT THE ELECTION OF CONTROL SOLUTIONS, INC. OR SELLER, THE REPLACEMENT OF THE PRODUCT.**

To the extent consistent with applicable law, Control Solutions, Inc. and Seller offer this product, and Buyer and User accept it, subject to the foregoing Conditions of Sale and Limitation of Warranty and Liability, which may not be modified except by written agreement signed by a duly authorized representative of Control Solutions, Inc.

[Optional Warranty Statement 2]

WARRANTY

Read the entire Directions for Use and Warranty before using this product. By using this product, user or buyer accepts the following warranty. The directions for use of this product are believed to adequate and

must be followed carefully. It is impossible to eliminate all risks associated with the use of this product. Unintended consequences may result because of unknown factors. To the extent consistent with applicable law, all such risks shall be assumed by the user or buyer. The seller is committed to providing high quality products. To the extent consistent with applicable law, the seller makes no warranties, express or implied, of merchantability or of fitness for a particular purpose or otherwise, that extend beyond statements on this label. To the extent consistent with applicable law, the manufacturer or the seller shall not be liable for indirect, special, incidental or consequential damages. To the extent consistent with applicable law, the exclusive remedy of the user or buyer shall not exceed the purchase price paid.

[OPTIONAL MARKETING STATEMENTS:]

General Claims

- [CSI] Pressurized Solutions
- Adulticides and IGR Provide Dual modes of action
- For indoor/outdoor use
- Intended for Pest Control Operators and Commercial Use Only
- [Pressurized] Combination Chemistry® [from Control Solutions][, Inc.]
- IGR is photostable for 14 days
- [One can] [T]treats over 2,000 square feet [ft²]
- Contains Nylar® IGR
- For Carpet, Floors and Furniture
- Carpet, floor and Furniture Spray

Flea Claims

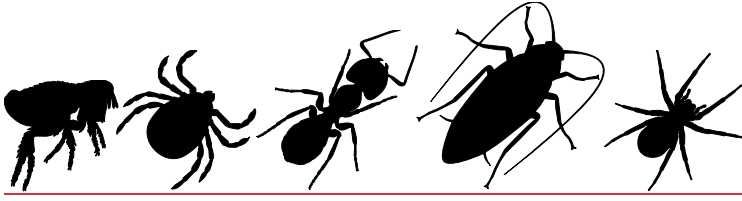
- Broadcast carpet spray for flea control
- Disrupts the life cycle of fleas
- Breaks the flea life cycle for up to [3 months] [90 days]
- Continuous flea protection for up to [90 days] [12 weeks] [3 months]
- Protects against fleas for 3 months

Efficacy Claims

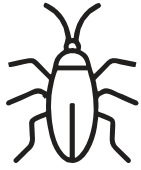
- Controls [, Crickets][, Sowbugs][, Silverfish] [and] [Carpet Beetles]
- Kills [fleas,] [ticks,] [cockroaches,] [ants (excluding Carpenter, Harvester, and Pharaoh ants),] [silverfish,] [crickets,] [spiders,] [sowbugs] [and carpet beetles]

Logos





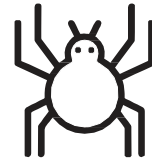
FLEAS



COCK-



TICKS



SPIDERS

ROACHES



ANTS