



## OFFICE OF CHEMICAL SAFETY AND POLLUTION PREVENTION

WASHINGTON, D.C. 20460

August 21, 2024

Leanna Bosarge  
Director, Regulatory Affairs  
Control Solutions, Inc.  
5903 Genoa-Red Bluff  
Pasadena, TX 77507-1041

Subject: Label Amendment - Registration Review Mitigation for Metsulfuron-methyl  
Product Name: Martin's Dollarweed Killer  
EPA Registration Number: 53883-345  
Application Date: December 18, 2017 and August 15, 2024  
Decision Number: 596113

Dear Leanna Bosarge:

The Agency, in accordance with the Federal Insecticide, Fungicide, and Rodenticide Act (FIFRA), as amended, has completed reviewing all the information submitted with your application to support the Registration Review of the above referenced product in connection with the metsulfuron-methyl Interim Decision, and has concluded that your submission is acceptable. The label referred to above, submitted in connection with registration under FIFRA, as amended, is acceptable.

Should you wish to add/retain a reference to the company's website on your label, then please be aware that the website becomes labeling under the Federal Insecticide, Fungicide, and Rodenticide Act and is subject to review by the Agency. If the website is false or misleading, the product would be misbranded and unlawful to sell or distribute under FIFRA section 12(a)(1)(E). 40 CFR 156.10(a)(5) list examples of statements EPA may consider false or misleading. In addition, regardless of whether a website is referenced on your product's label, claims made on the website may not substantially differ from those claims approved through the registration process. Therefore, should the Agency find or if it is brought to our attention that a website contains false or misleading statements or claims substantially differing from the EPA approved registration, the website will be referred to the EPA's Office of Enforcement and Compliance Assurance.

A stamped copy of your labeling is enclosed for your records. This labeling supersedes all previously accepted labeling and must be used at your next label printing. You must submit one copy of the final printed labeling before you release the product for

shipment with the new labeling. In accordance with 40 CFR 152.130(c), you may distribute or sell this product under the previously approved labeling for 12 months from the date of this letter. After 12 months, you may only distribute or sell this product if it bears this new revised labeling or subsequently approved labeling. "To distribute or sell" is defined under FIFRA section 2(gg) and its implementing regulation at 40 CFR 152.3.

If you have any questions about this letter, please contact Concepción Rodríguez by phone at 202-566-0820, or via email at [rodriguez.concepcion@epa.gov](mailto:rodriguez.concepcion@epa.gov).

Sincerely,

A handwritten signature in blue ink, appearing to read 'Linda Arrington', with a stylized flourish at the end.

Linda Arrington, Branch Chief  
Risk Management and Implementation Branch 4  
Pesticide Re-Evaluation Division  
Office of Pesticide Programs

ENCLOSURE: Stamped label



# Dollarweed Killer

[alt. brand name: Top Shot™; TopShot™; TopShot™ Weed Killer]

[Weed Killer]

[Liquid [MSM] Herbicide]

[Flowable [MSM] Herbicide]

[[Liquid] Weed Killer for Lawns]

**FOR RESIDENTIAL USE ON LAWNS**

*[ROOM FOR ARTWORK]*

**ACCEPTED**

Aug 21, 2024

Under the Federal Insecticide, Fungicide  
and Rodenticide Act as amended, for the  
pesticide registered under  
EPA Reg. No. 53883-345

**ACTIVE INGREDIENT:**

Metsulfuron methyl: Methyl 2-[[[(4-methoxy-6-methyl-1,3,5-triazin-2-yl)amino]carbonyl]amino]sulfonyl]benzoate ..... 25.0%

**OTHER INGREDIENTS:**..... 75.0%

**TOTAL:** ..... 100.0%

This product contains 0.17 pounds of metsulfuron-methyl per fl. oz.

**KEEP OUT OF REACH OF CHILDREN**

## CAUTION

FIRST AID	
<b>If on skin or clothing:</b>	<ul style="list-style-type: none"><li>• Take off contaminated clothing.</li><li>• Rinse skin immediately with plenty of water for 15-20 minutes.</li><li>• Call a poison control center or doctor for treatment advice.</li></ul>
<b>If in eyes:</b>	<ul style="list-style-type: none"><li>• Hold eye open and rinse slowly and gently with water for 15- 20 minutes.</li><li>• Remove contact lenses, if present, after the first 5 minutes, then continue rinsing eye.</li><li>• Call a poison control center or doctor for treatment advice.</li></ul>
HOT LINE NUMBER	
Have the product container or label with you when calling a poison control center or doctor, or going for treatment. For information on this product, contact the National Pesticide Information Center, 1-800-858-7378, Monday-Friday, 7:30 AM-3:30 PM PST. You may also contact the National Poison Control Center, 1-800-222-1222, day or night, for emergency medical treatment information call SafetyCall® at (866) 897-8050. <b>FOR CHEMICAL EMERGENCY:</b> Spill, leak, fire, exposure, or accident call CHEMTREC 1-800-424-9300.	

[REFER TO INSIDE OF BOOKLET FOR PRECAUTIONARY STATEMENTS, STORAGE AND DISPOSAL, AND USE DIRECTIONS.]

EPA Reg. No. 53883-345

EPA Est. No. XXXXX-XX-XXX

Manufactured for:

Control Solutions, Inc., 5903 Genoa-Red Bluff, Pasadena, TX 77507

Net Weight: 0.12 fl. oz. (2 x 0.06 fl. oz.) [2 x 1.8 mL]

**PRECAUTIONARY STATEMENTS**  
**HAZARDS TO HUMANS AND DOMESTIC ANIMALS**

**CAUTION:** Causes moderate eye irritation. Avoid contact with skin, eyes or clothing. Avoid breathing spray mist. Wash thoroughly with soap and water after handling and before eating, drinking, chewing gum, using tobacco, or using the toilet.

**ENVIRONMENTAL HAZARDS**

To protect the environment, do not allow pesticide to enter or run-off into storm drains, drainage ditches, gutters or surface waters. Applying this product in calm weather when rain is not predicted for the next 24 hours will help to ensure that wind or rain does not blow or wash pesticide off the treatment area. Rinsing application equipment over the treated area will help avoid run off to water bodies or drainage systems.

Metsulfuron methyl is known to leach through soil into groundwater under certain conditions as a result of label use. This chemical may leach into groundwater if used in areas where soils are permeable, particularly where the water table is shallow.

This product may impact surface water quality due to runoff of rain water. This is especially true for poorly draining soils and soils with shallow ground water. This product is classified as having high potential for reaching surface water via runoff for weeks after application. A level, well-maintained vegetative buffer strip between areas to which this product is applied and surface water features such as ponds, streams, and springs will reduce the potential loading of metsulfuron methyl from runoff water and sediment. Runoff of this product will be greatly reduced by avoiding applications when rainfall or irrigation is expected to occur within 48 hours.

**DIRECTIONS FOR USE**

It is a violation of Federal law to use this product in a manner inconsistent with its labeling.

**SPRAY DRIFT ADVISORIES**

THE APPLICATOR IS RESPONSIBLE FOR AVOIDING OFF-SITE SPRAY DRIFT.

BE AWARE OF NEARBY NON-TARGET SITES AND ENVIRONMENTAL CONDITIONS.

**Non-target Organism Advisory Statement:** This product is toxic to plants and may adversely impact the forage and habitat of non-target organisms, including pollinators, in areas adjacent to the treated area. Protect the forage and habitat of non-target organisms by minimizing spray drift. For further guidance and instructions on how to minimize spray drift, refer to the Spray Drift Management section of this label.

**WINDBLOWN SOIL PARTICLES:** This product has the potential to move off-site due to wind erosion. Soils that are subject to wind erosion usually have a high silt and/or fine to very fine sand fractions and low organic matter content. Other factors which can affect the movement of windblown soil include the intensity and direction of prevailing winds, vegetative cover, site slope, rainfall, and drainage patterns. Avoid applying this product if prevailing local conditions may be expected to result in off-site movement.

**Use Restrictions:**

- Do not make more than 2 applications of this product per year.
- Do not re-apply less than 30 days after the initial application.

- Do not allow children or pets to contact treated areas until sprays have dried.
- Do not use on vegetable gardens.
- Do not apply where roots of desirable trees may extend into the treated zone.
- Do not over saturate the lawn. Oversaturation can cause burn-spots on the lawn.
- Do not use this product on or near desirable plants, including contact of spray on exposed root systems or adventitious shoots within the drip line of desirable trees and shrubs since injury may result.

## WHERE TO USE

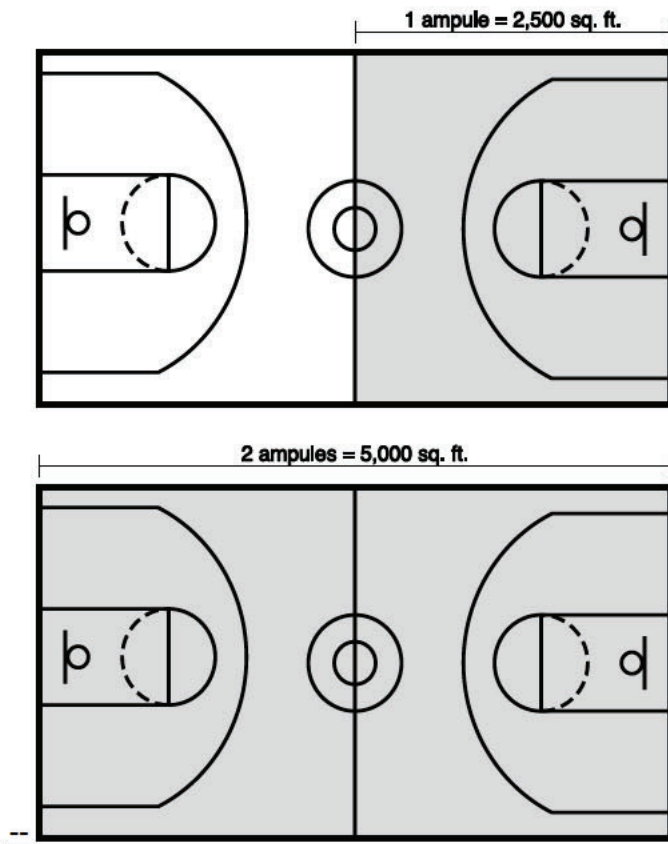
**Martin's® Dollarweed Killer** [alt. brand name] is for use only on, Bermudagrass, Centipede grass, Zoysiagrass (Meyers and Emerald) and St. Augustinegrass turf areas.

## HOW TO APPLY

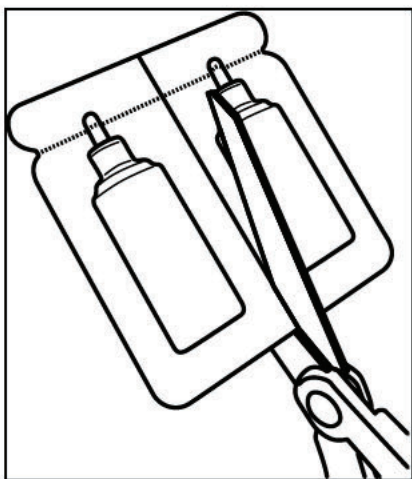
Determine the area of lawn you want to treat by measuring the width and length in feet. Multiply the width by the length to determine the area in square feet. Examples are shown in the table and diagram below.

LAWN SIZE		WIDTH		LENGTH
2,500 sq. ft.	=	50 feet	X	50 feet
5,000 sq. ft.	=	100 feet	X	50 feet

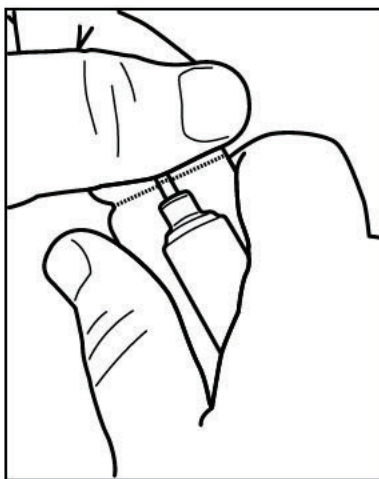
For areas less than 2,500 square feet, only one ampule (0.06 fl. oz.) [1.8 ml] is needed. For areas greater than 2,500 square feet, two ampules (0.12 fl. oz.) [3.6 ml] will be needed for proper treatment.



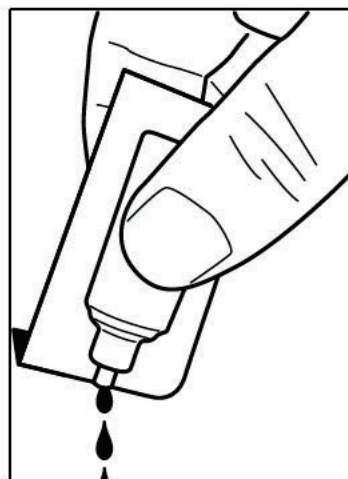
### Ampule Opening Instructions



Separate ampules by cutting or bending and breaking apart.



Hold ampule carefully and bend top back to open.



Squeeze entire contents of ampule into sprayer.



### Adjustable Rate Hose-end Sprayer

Martin's® Dollarweed Killer [alt. brand name] can be used in adjustable rate ready-to-spray hose-end sprayers that have at least a 16 ounce capacity. For proper coverage, apply enough product through the sprayer to wet the top of the lawn. Do not over-saturate, or attempt to water the roots of the weeds. Simply wet the top of the lawn, and let Martin's® Dollarweed Killer [alt. brand name] do the work.



When connecting any chemical dispensing device to your home water supply make sure that the sprayer has a built in back flow preventer or make sure there is a back flow preventer on your faucet.

### Mixing Instructions

1. Make sure water faucet to garden hose is off.
2. Attach hose-end sprayer to garden hose.
3. Adjust the metering dial to 1-1/2 ounces per gallon.
4. Remove bottle from hose-end nozzle apparatus.
5. Squeeze the entire contents of one ampule (1.8mL) of Martin's® Dollarweed Killer [alt. brand name] into the bottle and then add 16 ounces of water.
6. Reattach bottle to hose-end sprayer nozzle apparatus.
7. Ensure the hose-end sprayer nozzle apparatus is in the "OFF" position, or if trigger activated: make sure the trigger is not pressed.
8. Shake well before spraying to ensure that the contents are well mixed.

### Spraying Instructions

1. Measure off 2,500 square feet of lawn. Example: 25' x 100' or 50' x 50', approximately half the size of a basketball court.
2. Turn on water faucet to garden hose.
3. Aim hose-end sprayer at lawn and spray entire 2,500 square feet of lawn.
4. When applying, simply wet the top of the turf, and let Martin's® Dollarweed Killer [alt. brand name] do the work.
5. It should take less than 5 minutes to treat all 2,500 square feet and use up all 16 ounces of mixture in the bottle.
6. Repeat mixing and spraying instructions to treat an additional 2,500 square feet of lawn with second ampule of Martin's® Dollarweed Killer [alt. brand name].

### Hose-End Sprayer Cleaning

1. Fill the jar to full capacity with clean water.
2. Spray previously treated area until bottle is empty. Do not rinse bottle and pour onto ground.

Only use sprayers dedicated to herbicide use.

### Handheld Pump-Up Pressure Sprayer

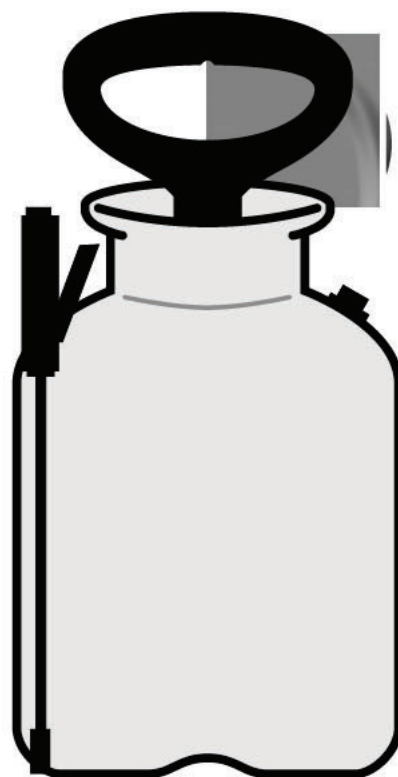
If you prefer you may use a handheld pump-up pressure sprayer with a capacity of 1 to 3 gallons.

#### Mixing Instructions:

1. Remove the top of pump-up sprayer to allow filling.
2. Squeeze the entire contents of one ampule (1.8 mL) of Martin's® Dollarweed Killer [alt. brand name] into the sprayer container.
3. Fill the sprayer with water to capacity.
4. Reattach the top of the pump-up sprayer to contain the contents.
5. Shake well before spraying.

#### Spraying Instructions

1. Measure off 2,500 square feet of lawn. Example: 25' x 100' or 50' x 50', approximately half the size of a basketball court.
2. Pump up spray to manufacturer recommended pressure.
3. Aim pump-up sprayer at lawn and spray entire 2,500 square feet of lawn.
4. When applying, simply wet the top of the turf, and let Martin's® Dollarweed Killer [alt. brand name] do the work.
5. Repeat mixing and spraying instructions to treat an additional 2,500 square feet of lawn with second ampule of Martin's® Dollarweed Killer [alt. brand name].



#### Pump-Up Sprayer Cleaning

1. Add one half gallon of water to sprayer.
2. Pump up sprayer and spray previously treated area until tank is empty. Do not rinse bottle and pour onto ground.

Only use sprayers dedicated to herbicide use.

**Martin's® Dollarweed Killer [alt. brand name] controls the following perennial and annual weedy grasses:**

Bahiagrass

Foxtail

Ryegrass

**Martin's® Dollarweed Killer [alt. brand name] controls the following broadleaf (dicot) weeds:**

Annual Sowthistle

Crown Vetch

Redroot Pigweed

Aster

Curly Dock

Redstem Filaree

Bittercress

Dandelion

Shepherdspurse

Blue Mustard

Dog Fennel

Smallseed Flaxweed

Buckhorn

Dollarweed

Smooth Pigweed

Bur Buttercup

False Chamomile

Spurge (prostrate)

Canada Thistle

Fiddleneck Tarweed

Sweet Clover



Carolina Geranium	Field Pennycress	Tansy Mustard
Chicory	Flixweed	Treacle Mustard
Clover (white)	Florida Pusley	Tumble Mustard
Common Chickweed	Goldenrod	Virginia Buttonweed
Common Groundsel	Henbit	Wild Carrot
Common Mullein	Hoary Cress (whitetop)	Wild Celery
Common Purslane	Kochia	Wild Garlic
Common Sunflower	Lambsquarters	Wild Lettuce
Common Yarrow	Miners Lettuce	Wild Mustard
Conical Catchfly	Pennsylvania Smartweed	Wild Onion
Cow Cockle	Plantain	Wood Sorrel (oxalis)
	Prickly Lettuce	
	Prostrate Knotweed	

#### **STORAGE AND DISPOSAL**

Do not contaminate water, food, or feed by storage or disposal.

**PESTICIDE STORAGE:** Store product in original container only. Store in cool, dry place.

**PESTICIDE DISPOSAL:** Wastes resulting from the use of this product must be disposed of on site or at an approved waste facility.

**CONTAINER HANDLING:** Nonrefillable container. Do not reuse or refill this container. Completely empty ampule into application equipment. If recycling option is not available, discard in the trash or call your local solid waste agency or [insert toll free number or web site] for disposal instructions.

#### **LIMITATION OF WARRANTY AND LIABILITY**

Read the entire direction for use, conditions of warranties and limitations of liability before using this product. If terms are not acceptable, return the unopened product container at once. By using this product, user or buyer accepts the following **CONDITIONS, DISCLAIMER OF WARRANTIES, and LIMITATIONS OF LIABILITY.**

**CONDITIONS:** The directions for use of this product are believed to be adequate and must be followed carefully. However, it is impossible to eliminate all risk associated with the use of this product. Crop injury, ineffectiveness or other unintended consequences may result because of such factors as weather conditions, presence of other materials, or the manner of use or application, all of which are beyond the control of Control Solutions, Inc. All such risks shall be assumed by the user or buyer.

**DISCLAIMER OF WARRANTIES:** To the extent consistent with applicable law, Control Solutions, Inc. makes no other warranties, express or implied, of merchantability or of fitness for a particular purpose or otherwise, that extend beyond the statements made on this label. No agent of Control Solutions, Inc. is authorized to make any warranties beyond those contained herein or to modify the warranties contained herein. To the extent consistent with applicable law, Control Solutions, Inc. disclaims any liability whatsoever for special, incidental or consequential damages resulting from the use or handling of this product.

**LIMITATIONS OF LIABILITY:** To the extent consistent with applicable law, the exclusive remedy of the

user or buyer for any and all losses, injuries or damages resulting from the use or handling of this product, whether in contract, warranty, tort, negligence, strict liability or otherwise, shall not exceed the purchase price paid or at Control Solutions, Inc election, the replacement of product.

**[OPTIONAL MARKETING STATEMENTS]**

- [Kills], [Controls], [Eradicates], [Treats] weeds from entire lawn [unlike spot treatment sprays].
- [Summer] weed control for broadleaf weeds
- Kills dollarweed, dandelions, [and] clover [and over 50 other lawn weeds]
- [Both ampules] Treat[s] up to 5,000 sq. ft.
- 1 [vial] [ampule] treats 2,500 square feet
- [For use on] Bermudagrass, Centipede grass, Zoysiagrass (Meyers and Emerald) and St. Augustine[grass]
- [For use] [Easy application] with hose end sprayer or pump up sprayer
- Easy-to-use!
- [Dual Action] Works through the leaves and roots of the weeds [leaving your lawn unharmed]
- [Selective herbicide] targets only [the] weeds in your lawn
- Will not harm your lawn when used as directed
- Kills weeds, not St. Augustine/bermudagrass lawns [Southern lawns]
- [Corrects] [Controls] most lawn weed problems
- Apply in the spring, summer or fall, [any time weeds are actively growing.]