



**OFFICE OF CHEMICAL SAFETY AND POLLUTION PREVENTION**

WASHINGTON, D.C. 20460

November 10, 2025

Haley Wade  
Lead Regulatory Manager  
Control Solutions, Inc.  
5903 Ginoa-Red Bluff  
Pasadena, TX 77507-1041

Subject: Label Amendment - Registration Review Mitigation for Pyriproxyfen and Permethrin  
Product Name: CSI AEROSOL FLEA KILLER AND INSECT GROWTH REGULATOR  
EPA Registration Number: 53883-304  
Case Number: 475814 and 481249  
Application Date: March 18, 2021, and February 28, 2020

Dear Haley Wade:

The Agency, in accordance with the Federal Insecticide, Fungicide, and Rodenticide Act (FIFRA), as amended, has completed reviewing all the information submitted with your application to support the Registration Review of the above referenced product in connection with the Pyriproxyfen and Permethrin Interim Decisions, and has concluded that your submission is acceptable. The label referred to above, submitted in connection with registration under FIFRA, as amended, is acceptable.

Should you wish to add/retain a reference to the company's website on your label, then please be aware that the website becomes labeling under the Federal Insecticide, Fungicide, and Rodenticide Act and is subject to review by the Agency. If the website is false or misleading, the product would be misbranded and unlawful to sell or distribute under FIFRA section 12(a)(1)(E). 40 CFR 156.10(a)(5) list examples of statements EPA may consider false or misleading. In addition, regardless of whether a website is referenced on your product's label, claims made on the website may not substantially differ from those claims approved through the registration process. Therefore, should the Agency find or if it is brought to our attention that a website contains false or misleading statements or claims substantially differing from the EPA approved registration, the website will be referred to the EPA's Office of Enforcement and Compliance Assurance.

A stamped copy of your labeling is enclosed for your records. This labeling supersedes all previously accepted labeling and must be used at your next label printing. You must

submit one copy of the final printed labeling before you release the product for shipment with the new labeling. In accordance with 40 CFR 152.130(c), you may distribute or sell this product under the previously approved labeling for 12 months from the date of this letter. After 12 months, you may only distribute or sell this product if it bears this new revised labeling or subsequently approved labeling. "To distribute or sell" is defined under FIFRA section 2(gg) and its implementing regulation at 40 CFR 152.3.

If you have any questions about this letter, please contact Concepción Rodríguez by phone at 202-566-0820, or via email at [rodriguez.concepcion@epa.gov](mailto:rodriguez.concepcion@epa.gov).

Sincerely,

A handwritten signature in black ink, appearing to read "Julie Javier", with a stylized flourish at the end.

Julie Javier, Team Leader  
Risk Mitigation and Implementation Branch 4  
Pesticide Re-Evaluation Division  
Office of Pesticide Programs

ENCLOSURE: Stamped label

Pyriproxyfen	Group	7	INSECTICIDE
--------------	-------	---	-------------

## CSI Aerosol Flea Killer and Insect Growth Regulator

**Alternate Brand Name(s):** Aerocide Aerosol Flea and Tick Killer, Aerocide Pressurized Flea and Tick Killer, Aerest, Aerest Aerosol Flea and Tick Killer, Aerest Pressurized Flea and Tick Killer, Supracide, Supracide Aerosol Flea and Tick Killer, Supracide Pressurized Flea and Tick Killer, Pyricide, Pyricide Aerosol Flea and Tick Killer, Pyricide Pressurized Flea and Tick Killer, Pyrecide, Pyrecide Aerocide Flea and Tick Killer, Pyrecide Pressurized Flea and Tick Killer, PYGR, FLEE™, Flea and Tick Carpet Spray, Pivot® Ultra, FLEE® Plus IGR Carpet Spray, FLEE® Carpet Spray Plus IGR

Kills Ants, Black Widow Spiders, Cockroaches, Crickets, Firebrats, Fleas, Houseflies, Mosquitos, Rice Weevils, Saw-Toothed Grain Beetles, Small Flying Moths, and Ticks.

### FOR USE IN AND AROUND:

Apartments, Homes, Hospitals, Hotels, Motels, Offices, Schools, Supermarkets, Warehouses, Utilities, Veterinary Clinics, Kennels, and Other Commercial and Industrial Buildings. Automobiles, Transportation Equipment (Buses, Boats, Ships, Trains, Trucks)

For indoor use only.

### ACTIVE INGREDIENTS:

Pyriproxyfen:.....	0.10%
Pyrethrins: .....	0.05%
n-Octyl bicycloheptene dicarboximide†.....	0.40%
Permethrin*.....	0.40%
OTHER INGREDIENTS: .....	99.05%

**TOTAL: 100.00%**

†MGK 264, Insecticide Synergist

\*Cis/trans ratio: Max. 55% ± cis and Min. 45% ± trans

Contains no CFCs or other ozone depleting substances. Federal regulations prohibit CFC propellants in aerosols.

**KEEP OUT OF REACH OF CHILDREN**

## CAUTION

[Alternate text – all or in part: See [Refer to] [side panel(s)] [attached label/card]] for First Aid, Precautionary Statements, Directions for Use and Storage and Disposal.]

**EPA REG. No. 53883-304**

**Net Weight: -----**

**EPA Est. No.: xxxxxxxxx**

**Manufactured by:**  
Control Solutions, Inc.  
5903 Genoa-Red Bluff  
Pasadena, TX 77507

**ACCEPTED**

**Nov 10, 2025**

Under the Federal Insecticide, Fungicide  
and Rodenticide Act as amended, for the  
pesticide registered under  
EPA Reg. No. 53883-304

#### **FIRST AID**

**IF ON SKIN OR CLOTHING:** Take off contaminated clothing. Rinse skin immediately with plenty of water for 15 to 20 minutes. Call a physician or poison control center for treatment advice.

**IF SWALLOWED:** Immediately call a poison control center or doctor. Do not induce vomiting unless told to do so by a poison control center or physician. Do not give ANY liquid to the person. Do not give anything by mouth to an unconscious person.

**IF IN EYES:** Hold eyes open and rinse slowly and gently with water for 15-20 minutes. Remove contact lenses, if present, after the first 5 minutes, and then continue rinsing eye. Call a physician or poison control center for treatment advice.

**IF INHALED:** Move person to fresh air. If person is not breathing, call 911 or an ambulance, then give artificial respiration, preferably mouth-to-mouth if possible. Call a physician or poison control center for further treatment advice.

Have the product container or label with you when calling a poison control center, doctor or veterinarian, or going for treatment. For additional information on this product (including health concerns, medical emergencies or pesticide incidents), you may call SafetyCall<sup>®</sup> International at 1-866-897-8050, twenty-four (24) hours per day, seven (7) days per week.

#### **PRECAUTIONARY STATEMENTS**

##### **HAZARDS TO HUMANS AND DOMESTIC ANIMALS**

**CAUTION:** Harmful is absorbed through skin. Avoid contact with skin, eyes or clothing. Harmful if swallowed. Causes moderate eye injury.. Do not breathe vapor or spray mist. Wash hands thoroughly with soap and water after handling and before eating, drinking, chewing gum, using tobacco or using the toilet. Remove and wash contaminated clothing before reuse.



**Highly Flammable Ingredient**  
**Ingrediente Altamente Inflamable**

#### **ENVIRONMENTAL HAZARDS**

This pesticide is extremely toxic to aquatic organisms, including fish and invertebrates: Do not apply directly to or near water, or to areas where surface water is present or to intertidal areas below the mean water mark. Do not apply when weather conditions favor drift from treated areas. Drift and run-off from treated areas may be hazardous to aquatic organisms in water adjacent to treated areas. See Directions for Use for additional precautions and requirements.

This product is highly toxic to bees exposed to direct treatment on blooming crops or weeds. Do not apply this product or allow it to drift to blooming crops or weeds while bees are actively visiting the treatment area.

#### **PHYSICAL OR CHEMICAL HAZARDS**

Extremely Flammable. Contents under pressure. Keep away from fire, sparks, and heated surfaces. Do not puncture or incinerate container. Exposure to temperatures above 130°F may cause bursting.

#### **DIRECTIONS FOR USE**

IT IS A VIOLATION OF FEDERAL LAW TO USE THIS PRODUCT IN A MANNER INCONSISTENT WITH

## ITS LABELING.

Apply this product only as specified on this label. Read all Directions and Precautions completely before use.

### USE RESTRICTIONS:

- **This product is for indoor use only.**
- Do not apply as a broadcast treatment to indoor surfaces at residential sites, including nurseries, day care centers, schools, hospitals and nursing homes.
- Do not apply this product directly to companion animals (pets)
- Do not apply this product in a way that will contact adults, children or pets. Remove pets, birds and cover fish aquariums before spraying.
- Do not wet articles to the point of run-off or drip. Do not use treated article until spray has dried.
- Do not remain in treated area. Exit area immediately and remain outside the treated area until aerosols, vapors, and/or mists have dispersed.
- Do not enter or allow others to enter the treated area until sprays have dried.
- Do not enter or allow others to enter the treated areas until vapors, mists, and aerosols have dispersed, and the treated area has been thoroughly ventilated.
- Remove or cover exposed food and drinking water, in the treatment area, before application. Remove or cover dishes, utensils, food processing equipment, and food preparation surfaces in the treatment area, or wash them before use.
- Do not apply this product in hospital rooms while occupied or in any rooms occupied by the elderly or infirm. Remove patients from room prior to treatment and thoroughly ventilate (2 hr) after application. Do not return patients to room until after ventilation.
- Do not apply to classrooms when in use.
- Do not apply more than 1 time/day.
- Do not apply directly into sewers or drains or to any area where drainage to storm sewers, water bodies, or aquatic habitat can occur. Do not allow the product to enter any drain during or after application.
- Do not allow to enter indoor or outdoor drains. *No permita la entrada a desagües internos o externos.*



- Follow proper disposal procedures on this label. *Siga las indicaciones del etiquetado para el desecho apropiado del producto.*

### SPRAY DRIFT ADVISORIES

THE APPLICATOR IS RESPONSIBLE FOR AVOIDING OFF-SITE SPRAY DRIFT.  
BE AWARE OF NEARBY NON-TARGET SITES AND ENVIRONMENTAL CONDITIONS.

#### Handheld Technology Applications

- Take precautions to minimize spray drift.

### SHAKE WELL BEFORE USE

This product will kill Ants, Cockroaches, Crickets, Fleas, Houseflies, Mosquitoes, Rice Weevils, Sawtoothed

Grain Beetles, Small Flying Moths and Ticks. It will also prevent flea infestations for up to 7 months. Adult fleas may be seen in the treated areas when brought in on infested animals or when adult fleas emerge from pupal cases; however, a population will not develop in the treated area. Areas which could be infested include rugs, carpets, upholstered furniture, pet beds and pet resting areas. When treating upholstered furniture, treat under cushions and areas where flea development occurs.

**NOTICE:** This product has been tested on several types of carpet, fabric and other household furnishings without adverse effects. Test in an inconspicuous area before full treatment, some plastics or furniture may be whitened or dulled. Because of the wide variety of floor types and finishes always test for color fastness, or dulling before applying to larger areas. Avoid contact with antique finishes. For best results always follow complete application directions.

**EXCEPT FOR APPLICATOR, DO NOT PERMIT HUMANS OR PETS TO CONTACT TREATED SURFACES UNTIL THE SPRAY HAS DRIED.**

[A 10 oz. can treats up to 1,300 sq. ft.] or [A 20 oz. can treats up to 2,625 sq.ft.] or [A 32 oz. can treats up to 4,200 sq. ft.] Vacuum carpeted areas and other areas being treated before treatment and post treatment after drying. To treat infested areas or areas which could be infested, hold can at arm's length and evenly apply a direct light spray, as a spot treatment, to infested areas, such as carpets, rugs, upholstered furniture, pet beds and pet resting areas. Vacate treated areas during application up until the spray has dried. Do not treat areas of prolonged human contact. Do not treat pets, including cats and dogs, with this product. Spot treatments must not exceed two square feet in size (for example, 2ft. by 1 ft or 4 ft. by 0.5 ft.).**NOTE:**

- **To Kill Fleas, and Ticks:** Remove old companion animal (pet) bedding and replace with fresh, clean bedding after treatment.
- **Do not apply this product directly to companion animals (pets).** Treat pets directly with an appropriately registered product labeled for such a use in conjunction with this treatment.

#### **STORAGE AND DISPOSAL**

Do not contaminate water, food or feed by storage or disposal.

**PESTICIDE STORAGE:** Store in a cool, dry (preferably locked) area that is away from heat and open flame, and in a place that is inaccessible to children and animals. **PESTICIDE DISPOSAL:** Wastes resulting from use of this product may be disposed of on site. Do not pour or dispose down-the-drain or sewer. Call your local solid waste Agency for local disposal options.

**CONTAINER HANDLING: Nonrefillable container.** Do not puncture or incinerate! Empty container by using this product in accordance with the label directions. Offer empty container for recycling, if available, or place in trash if allowed by state and local regulations. If container is partly full contact your local solid waste agency for disposal instructions.

**NOTICE:** Read the entire Directions for Use and Conditions of Sale and Limitation of Warranty and Liability before buying or using this product. If the terms are not acceptable, return the product at once, unopened, and the purchase price will be refunded.

#### **WARRANTY STATEMENT**

The Directions for Use of this product should be followed carefully. It is impossible to eliminate all risks inherently associated with the use of this product. Ineffectiveness or other unintended consequences may result because of such factors as manner of use or application, weather, presence of other materials or other influencing factors in the use of the product, which are beyond the control of Control Solutions, Inc. or Seller. All such risks shall be assumed by Buyer and User, and Buyer and User agree to hold Control Solutions, Inc. and Seller harmless for any claims relating to such factors.

*[Text in brackets and italics are notes to the label editor.]*  
[Text in brackets alone are optional statements or alternative statements.]

To the extent consistent with applicable law, Control Solutions, Inc. warrants that this product conforms to the chemical description on the label and is reasonably fit for the purposes stated in the Directions for Use, subject to the inherent risks referred to above, when used in accordance with directions under normal use conditions. This warranty does not extend to the use of this product contrary to label instructions, or under abnormal conditions or under conditions not reasonably foreseeable to or beyond the control of Seller or Control Solutions, Inc., and Buyer and User assume the risk of any such use. CONTROL SOLUTIONS, INC. MAKES NO WARRANTIES OF MERCHANTABILITY OR OF FITNESS FOR A PARTICULAR PURPOSE NOR ANY OTHER EXPRESS OR IMPLIED WARRANTY EXCEPT AS STATED ABOVE.

To the extent consistent with applicable law, IT IS **CONTROL SOLUTIONS INC., AND SELLERS INTENTION THAT** in no event shall Control Solutions or Seller be liable for any incidental, consequential or special damages resulting from the use or handling of this product. **THE EXCLUSIVE REMEDY OF THE USER OR BUYER, AND THE EXCLUSIVE LIABILITY OF CONTROL SOLUTIONS, INC., AND SELLER FOR ANY AND ALL CLAIMS, LOSSES, INJURIES OR DAMAGES (INCLUDING CLAIMS BASED ON BREACH OF WARRANTY, CONTRACT, NEGLIGENCE, TORT, STRICT LIABILITY OR OTHERWISE) RESULTING FROM THE USE OR HANDLING OF THIS PRODUCT, SHALL BE THE RETURN OF THE PURCHASE PRICE OF THE PRODUCT OR, AT THE ELECTION OF CONTROL SOLUTIONS, INC. OR SELLER, THE REPLACEMENT OF THE PRODUCT.**

To the extent consistent with applicable law, Control Solutions, Inc. and Seller offer this product, and Buyer and User accept it, subject to the foregoing Conditions of Sale and Limitation of Warranty and Liability, which may not be modified except by written agreement signed by a duly authorized representative of Control Solutions, Inc.

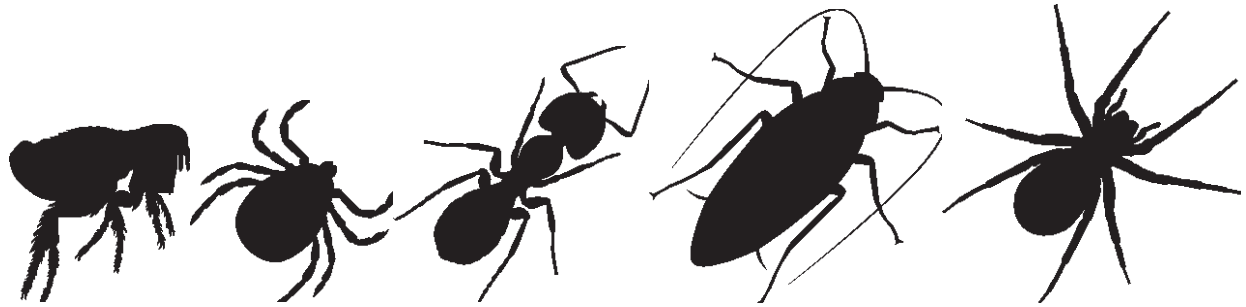
*Optional Marketing Claims: [ ] indicates alternate or optional wording to be used in Optional Marketing Claims and in body of actual label. Information in [ ] may be omitted on Final Printed Label.*



# **FLEE<sup>®</sup> Plus IGR** **Carpet Spray**



**INVERTED AEROSOL**  
**SPRAYS UPSIDE DOWN**



# **NEW!**



*Optional marketing statements:*

*[INDOOR INSECT KILLER]*  
*[Pressurized Flea and Tick Killer + IGR]*  
*[Carpet and Floor Spray]*  
*[Aerosol Flea and Tick Killer and Insect Growth Regulator]*  
*[Carpet, Floor and Furniture Spray]*  
*[For Carpet, Floors and Furniture]*  
*[For indoor use on floors, carpets and furniture]*  
*[Inverted Aerosol]*  
*[Sprays Upside Down]*  
*[Stops re-infestation by fleas for up to 7 months]*  
*[Kills fleas plus kills hatching eggs for up to 4 months]*  
*[Quick knockdown, continuous control]*  
*[Pyriproxyfen breaks the insect pests' life cycle]*  
*[Quick drying]*  
*[UV stable]*