



UNITED STATES ENVIRONMENTAL PROTECTION AGENCY
WASHINGTON, DC 20460

OFFICE OF CHEMICAL SAFETY
AND POLLUTION PREVENTION

February 23, 2021

Meibao Zhuang
Director, Regulatory Affairs
Control Solutions Inc.
5903 Genoa Red Bluff
Pasadena, Texas 77507

Subject: Label Amendment – fast track amendment to incorporate new optional marketing claims, small re-formatting changes and addition of non-public health pests
Product Name: Lambda 0.1% Insect Granules
EPA Registration Number: 53883-223
Application Date: June 13, 2019
Decision Number: 552205

Dear Ms. Zhuang:

The amended label referred to above, submitted in connection with registration under the Federal Insecticide, Fungicide and Rodenticide Act, as amended, is acceptable. This approval does not affect any conditions that were previously imposed on this registration. You continue to be subject to existing conditions on your registration and any deadlines connected with them.

A stamped copy of your labeling is enclosed for your records. This labeling supersedes all previously accepted labeling. You must submit one copy of the final printed labeling before you release the product for shipment with the new labeling. In accordance with 40 CFR 152.130(c), you may distribute or sell this product under the previously approved labeling for 18 months from the date of this letter. After 18 months, you may only distribute or sell this product if it bears this new revised labeling or subsequently approved labeling. “To distribute or sell” is defined under FIFRA section 2(gg) and its implementing regulation at 40 CFR 152.3.

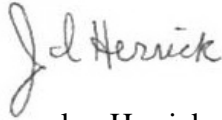
Should you wish to add/retain a reference to the company’s website on your label, then please be aware that the website becomes labeling under the Federal Insecticide Fungicide and Rodenticide Act and is subject to review by the Agency. If the website is false or misleading, the product would be misbranded and unlawful to sell or distribute under FIFRA section 12(a)(1)(E). 40 CFR 156.10(a)(5) list examples of statements EPA may consider false or misleading. In addition, regardless of whether a website is referenced on your product’s label, claims made on the website may not substantially differ from those claims approved through the registration process. Therefore, should the Agency find or if it is brought to our attention that a website contains false or misleading statements or claims substantially differing from the EPA approved registration, the website will be referred to the EPA’s Office of Enforcement and Compliance.

Your release for shipment of the product constitutes acceptance of these conditions. If these conditions are not complied with, the registration will be subject to cancellation in accordance

Page 2 of 2
EPA Reg. No. 53883-223
Decision No. 552205

with FIFRA section 6. If you have any questions, you may contact Hester Dingle at 703-347-8860 or via email at dingle.hester@epa.gov.

Sincerely,

A handwritten signature in cursive script that reads "J. Herrick".

Jacquelyn Herrick, Product Manager 03
Invertebrate & Vertebrate Branch 1
Registration Division (7505P)
Office of Pesticide Programs

Enclosure

ACCEPTED

02/23/2021

Under the Federal Insecticide, Fungicide
and Rodenticide Act as amended, for the
pesticide registered under
EPA Reg. No. 53883-223

Lambda 0.1% Insect Granules

For outdoor use around the home only.

Active Ingredient:

Lambda-cyhalothrin	0.1%
Other Ingredients	99.9%
Total	100.0%

Net Weight _____

**KEEP OUT OF REACH OF CHILDREN
CAUTION**

FIRST AID	
If in eyes:	<ul style="list-style-type: none">• Hold eye open and rinse slowly and gently with water for 15-20 minutes.• Remove contact lenses, if present, after the first 5 minutes, then continue rinsing eye.• Call a Poison Control Center or doctor for treatment advice.
Have the product container or label with you when calling a Poison Control Center or doctor, or going for treatment. For additional information on this pesticide product (including health concerns, medical emergencies or pesticide incidents), you may contact SafetyCall® International at 1-866-897-8050, twenty-four (24) hours per day seven (7) days per week.	

**PRECAUTIONARY STATEMENTS
HAZARDS TO HUMANS AND DOMESTIC ANIMALS**

CAUTION - Causes moderate eye irritation. Avoid contact with eyes or clothing. Wash thoroughly with soap and water after handling and before eating, drinking, chewing gum or using tobacco. Food utensils such as spoons or measuring cups must not be used for food purposes after use in measuring pesticides.

ENVIRONMENTAL HAZARDS

This pesticide is extremely toxic to fish and aquatic organisms and toxic to wildlife. This product is highly toxic to bees exposed to direct treatment or residues on blooming crops or weeds. **DO NOT** apply this product or allow it to drift to blooming crops or weeds if bees are visiting the treatment area.

To protect the environment, **DO NOT** allow pesticide to enter or run off into storm drains, drainage ditches, gutters or surface waters. Applying this product in calm weather when rain is not predicted for the next 24 hours will help to ensure that wind or rain does not blow or wash pesticide off the treatment area. Sweeping any product that lands on a driveway, sidewalk, or street, back onto the treated area of the lawn or garden will help to prevent run off to water bodies or drainage systems.

READ ENTIRE LABEL BEFORE USE

DIRECTIONS FOR USE

It is a violation of Federal law to use this product in a manner inconsistent with its labeling.

Keep children and pets off treated area until product has been watered in and lawn is dry.

In New York State, this product may not be applied to lawns within 100 feet of a coastal marsh, or stream that drains directly into a coastal marsh.

GENERAL INFORMATION

For use outdoors, on lawns and as a barrier band treatment around house foundation.

Kills ants (including Fire Ants), armyworms, billbugs, chinch bugs, crickets, cutworms, earwigs, European crane flies, fleas, grubs, roaches (German and American), sod webworms, ticks and other insect pests listed in the tables below.

{graphics 1, 2 and/or 3 from appendix may be used for below} **Know Grubs. Stop Grubs.**

White grubs are the immature larvae of scarab beetles. These extremely destructive turf pests feed on grass roots just below the soil surface, severing roots and causing lawn grasses to brown and die.

Effective white grub control involves reaching these pests at their most vulnerable. Fall treatment targets newly hatched grubs while they're still small and close to the surface.

With heavy infestations, you can roll turf back — just like a rug — to reveal severed roots and feeding grubs. To check your lawn, use a spade to lift a 12-inch-square piece of sod about 3 inches thick. Inspect the soil, thatch and roots closely.

[How to Apply][Apply in three easy steps] {Optional Graphic illustration see below}

[(1)][Prepare] Determine the size of the job and measure the area to be treated. Using the spreader setting chart, set your spreader to the proper setting

[(2)][Apply] Apply product according to labeled rates [to control [grubs]][insert listed pest]]. Complete coverage is important.

[(3)][Water] Water in granules immediately following application to release the active ingredient into the grass and soil. People and pets may re-enter lawn once grass has dried.



NOTE:

- Make no more than 6 applications per year per location at the low use rate (0.8 lb. per 1000 ft²).
- Make no more than 3 applications per year per location at the high use rate (2 lb. per 1000 ft²).
- Do not allow product to run off from target area.

Band Treatment

Around house foundation to control pests normally found around or near foundations of houses, as well as in lawns, and certain of these pests that may enter houses.

Pests	Use Rate	Use Instructions
Ants (Argentine, Southern, Field, Allegheny Mound, Florida Carpenter, Black Carpenter, Cornfield, Honey, Pavement, Red Imported Fire Ant, Nuisance), Fleas, Roaches (German and American), Palmetto bugs, Waterbugs, Millipedes, Mites, Silverfish, Sowbugs (Pillbugs), Crickets, Earwigs	Apply at the rate of 0.8 lb per 1,000 sq. ft. (an area 5' x 200') oz. or 1.25 oz. per 100 sq. ft. (5' x 20').	Apply a 3 to 5 foot band of granules next to the house foundation as well as lawns. Evenly distribute the granules. Water lightly immediately following application. Treat when insects first appear or when you notice lawn damage.

Overall Lawn Application

Pests	Use Rate	Use Instructions
Ants†, Armyworms*, European Crane Flies, Cricketsφ, Cutworms¥, Earwigs, Fleas, Lawn moths (sod webworms), Grasshoppersα, Japanese beetle (adults), Pillbugs, Spittle bugs, Mites, Green June Beetles, Leafhoppers§, Millipedes, Springtails and Ticks (including Ticks which may transmit Lyme Disease).	Apply at the rate of 0.8 lb per 1,000 sq. ft. (an area 20' x 50') For season long control apply at the rate of 2 lb per 1,000 sq. ft. (an area 20' x 50') Make no more than 6 applications per year at the low use rate or 3 times per year at the highest use rate.	Apply with a fertilizer spreader (see spreader setting chart). Apply when grass is dry and water the lawn lightly immediately following application. For season long control [up to 3 month control] of insects above the soil, including Red Imported Fire Ants, apply at higher use rate, as an overall lawn application. Treat when insects first appear or when you notice lawn damage.
Billbugs, White Grubs (including Japanese beetle grubs, Green June Beetle Grubs, Black dung beetle grubs, Brown dung beetle grubs, Night-flying dung beetle grubs, Asiatic garden beetle grubs, Black Turfgrass Ataenius grubs, European Chafer grubs, May Beetle grubs, June Beetle grubs, Northern Masked Chafer grubs, Oriental Beetle grubs, Southern Masked Chafer grubs), <i>Ataenius spretulus</i> (dung beetles), Hyperodes Weevils, Mole Crickets, Chinch bugs	Apply 1.2 lb. per 1,000 sq. ft. of lawn. Make no more than 6 applications per year at the low use rate or 3 times per year at the highest use rate.	Water grass completely immediately following application. Treat when insects first appear or when you notice lawn damage. For hyperodes weevils , apply in April-May. For billbug control , apply in May or when activity is first observed or when chewed or brown grass indicates damage from these insects. For grub control , except on dung beetle, treat any time between late July and early October. For dung beetle grub control , apply in early spring or early summer (March-July) when damage is first noticed. Immediately following application, completely water grass with ¼ to ½ inch of water. If a second generation occurs, treat again in late summer or early fall.

† Includes Argentine, Florida Carpenter, Black Carpenter, Southern, Field, Allegheny Mound, Cornfield, Honey, Pavement, Red Imported Fire Ant, Nuisance
* Armyworms including: Fall, Yellow-striped and Lawn
φ Crickets including: House, Common short-tailed, Indies short-tailed, Arizona, Tropical, Variable field, Fall field, Southeastern field, Texas field, Spring field, Northern wood, Western striped, Eastern striped, Sand field, Vocal field, and Southern wood
¥ Cutworms including: Army, Black, Bronzed, Clover, Granulate, Greasy, Green, Spotted, and Variegated
α Grasshoppers including: Banded range, Carolina, Differential, Horse lubber, Panther spotted, Pygmy, Red legged, Southeastern Lubber, Two striped, Alutacea Bird, American Bird, Angular-winged Katydid, Aztec Pygmy
§ Leafhoppers including: Aster, Blunt-nosed, Elm, Mountain, Red-banded, Rice, Rose, Sharp-nosed, Six-spotted, Southern garden, Variegated, Variegated larvae, Virginia creeper, White-banded elm

Spot Treatment

Pests	Use Rate	Use Instructions
Ants* (Argentine, Florida Carpenter, Black Carpenter, Southern, Field, Allegheny Mound, Florida Carpenter, Black Carpenter, Cornfield, Honey, Pavement, Nuisance)	Mound Treatment: Apply 1/2 teaspoon over and around each ant hill.	Water lightly immediately following application.
Red Imported Fire Ants	Mound Treatment: Apply 1/4 cup over, and 2 ft. around, each fire ant mound.	Immediately following application, water in completely. Apply a minimum of ¼ cup of the product in 1 gallon of water to each mound area. To prevent the disturbance of ants, water gently. Use of high pressure watering equipment may disturb the ants and cause migration, reducing product effectiveness. NOTE: For best results, apply in cool weather, 65°-80° F, or in early morning or late evening hours. Treat new mounds as they appear. Fast acting. Works within 24 hours.

Spreader Settings for Lawn Application

[INSERT SPREADER SETTING CHART]

SPREADER SETTINGS [Table 1]

Broadcast Spreaders	Rate (lbs/1,000ft ²)	Setting
[Insert Spreader Name Here]	[0.8-2]	[0.8-2 lbs/1,000 ft ²]
Drop Spreaders	Rate (lbs/1,000ft ²)	Setting
[Insert Spreader Name Here]	[0.8-2]	[0.8-2 lbs/1,000 ft ²]
Hand Held Spreaders	Rate (lbs/1,000ft ²)	Setting
[Insert Spreader Name Here]	[0.8-2]	[0.8-2 lbs/1,000 ft ²]

NOTE: Spreader settings are approximate. Calibrate your spreader before application since manufacturer's settings can vary among the same model of spreader.

[Broadcast spreader: Begin spreading by laying down two strips of this product at each end of lawn. Fill in remaining areas subsequently. Close the spreader when you stop walking or make turns to avoid uneven coverage. Overlap previous wheel track slightly to avoid gaps in coverage.]

[Drop spreader: Apply granules with spreader going in the same direction as the longest part of the lawn. Apply two (2) header strips first. To ensure thorough coverage, make sure to overlap wheel marks. Shutoff the spreader when finished or when the header strips have been reached.]

STORAGE AND DISPOSAL

PESTICIDE STORAGE: Reclose container tightly after each use. Store in a cool, dry area which is inaccessible to children and pets.

CONTAINER HANDLING: If empty: Do not reuse this container. Place in trash or offer for recycling if available. **If partly filled:** Call your local solid waste agency [or 1-800-CLEANUP] for disposal instructions. Never place unused product down any indoor or outdoor drain

Note: Buyer assumes all responsibilities for safety and use not in strict accordance with directions.

Control Solutions, Inc.
5903 Genoa-Red Bluff
Pasadena, TX 77507-1041

EPA Reg. No. 53883-223

EPA Est. No. _____

[Optional Marketing Statements -

- *Works within 24 hours*
- *Ready-To-Use Granules*
- *Guaranteed Results or Your Money Back*
- *New [!] [Exclusive Formula] (for 6 months)*
- *Low [No] Odor*
- *Kills the mound (colony)*
- *Starts to kill in minutes [hours]*
- *Kills Ants, Crickets, Fleas, Grubs, Ticks [and other listed pests]*
- *Kills Grubs [and lawn invading [damaging] Pests]*
- *Kills on contact*
- *Controls many destructive lawn insects, including grubs*
- *Kills Mole Crickets and Chinch Bugs*
- *Kills Fire Ants*
- *White Grub Control*
- *Effective Grub Control*
- *Kills insects above and below the ground [surface]*
- *Use on lawn and as a barrier treatment*
- *Kills over 40 types of insects [insect types][as listed]*
- *Kills 43 types of [lawn invading] [lawn damaging] insects [as listed]*
- *Covers [treats] up to 12,500 sq ft*
- *2X [2.5X] more coverage than standard 5,000 sq ft bags*
- *Kills fire ants and prevents new mound formation for up to 3 months [12 weeks] [all season long]*
- *Kills [Works on][Effective control of [against]] all types of listed lawn invading [lawn damaging] insects [pests]*
- *Fast acting plus season long killing power [control] – Guaranteed*
- *Season long control*
- *Starts to work immediately [in minutes], keeps working [lasts] all season [long]*
- *See results in minutes [in hours][overnight]*
- *Limits new mound formation [mound movement]*
- *[One application] lasts all season [long]*
- *One application 3 month [insert listed pest] control*
- *New, Improved Formula Lasts All Season [Long]*
- *{One Application} Lasts All Summer [Long]*
- *Easy to Apply*
- *Apply once for season-long control*
- *[Specially formulated for] Use on lawns [Shrubs][landscape][and][HomePerimeter]*
- *Tough on [insert listed insects], gentle on [your] lawn*

- Annual use can help control [insert listed beetles] infestations
- Won't harm [your] lawn
- Control [Kills] lawn [invading] damaging insects [pests] as listed
- Protects lawn from common pests [insects] as listed
- Stops [prevents] lawn damage [from insects {pests}] as listed [simple] [easy] one [step] [application] lawn protection
- Reclaim your lawn [today] from [annoying] [damaging] [insects] [bugs] [pests][insert listed pest]
- Kill [annoying] [damaging] [insects] [pests][insert listed pest] and reclaim your lawn [today!]
- Don't let [insert listed pest][insects][bugs] feed on your lawn another day
- [Kills][Controls][Prevents][Stops][grubs][lawn damaging insects][in one application]
- Prevents lawn damage for a stronger lawn
- 20 pound bag covers [treats] 25,000 sq. ft. [ft²] of lawn [for [insert listed pest]]
- 10 pound bag covers [treats] 12,500 sq. ft. [ft²] of lawn [for [insert listed pest]]
- Protect your [backyard][lawn] with [insert brand]
- Reclaim your [backyard][lawn] from nuisance pests
- [Kills][Controls] outdoor listed insects by contact so you and your family can enjoy your lawn
- Apply anytime between Spring throughout Summer
- Apply once for soil & surface insect control
- Apply [anytime] spring through late summer
- Helps prevent lawn root damage caused by insects
- Bug Killer
- Hate The Bugs. Love The Garden. Get [brand]!
- Got [insert listed pest here]? Get [brand]!
- Easy to apply
- Apply with [broadcast][lawn] spreader
- [Kills] [Controls] over 99 listed pests
- [Kills] [Controls] over 13 listed grubs
- [Kills] [Controls] grubs plus 86 [lawn damaging] pests
- 3 month [insert listed pest] control
- Season long [insert listed pest] control
- Season long grub killer
- One application provides season long grub control
- Season long soil insect protection
- Kills [insert listed pest]
- Controls [insert listed pest]
- Kills and prevents [insert listed pest][all season long]
- Kills lawn damaging grubs
- [GRAPHIC 2 from appendix] before and after images/illustration illustrating grub damage and treated lawn
- Stop the destructive grub lifecycle [today]
- Protect your lawn from grubs [and other listed insects]
- 3 month long lasting grub control
- Controls lawn damaging grubs
- Kills [insert listed pest] on contact
- Effective control against [insert listed pest]
- [Proven][Effective] [insert listed pest] killer
- [Satisfaction] [Guaranteed*] [kill*] *or your money back
- Guaranteed to work or your money back
- Guaranteed to kills grubs* *or your money back
- Trusted Brand since [insert year]
- Established Brand since [insert year]
- Est. [insert year]
- Trusted brand for over [10][20][30][50] years

- People and pets may re-enter once grass has dried
- People and pets may re-enter once grass has been watered in and dried
- People and pets may re-enter treated area once product has been watered in and dried
- Resealable bag

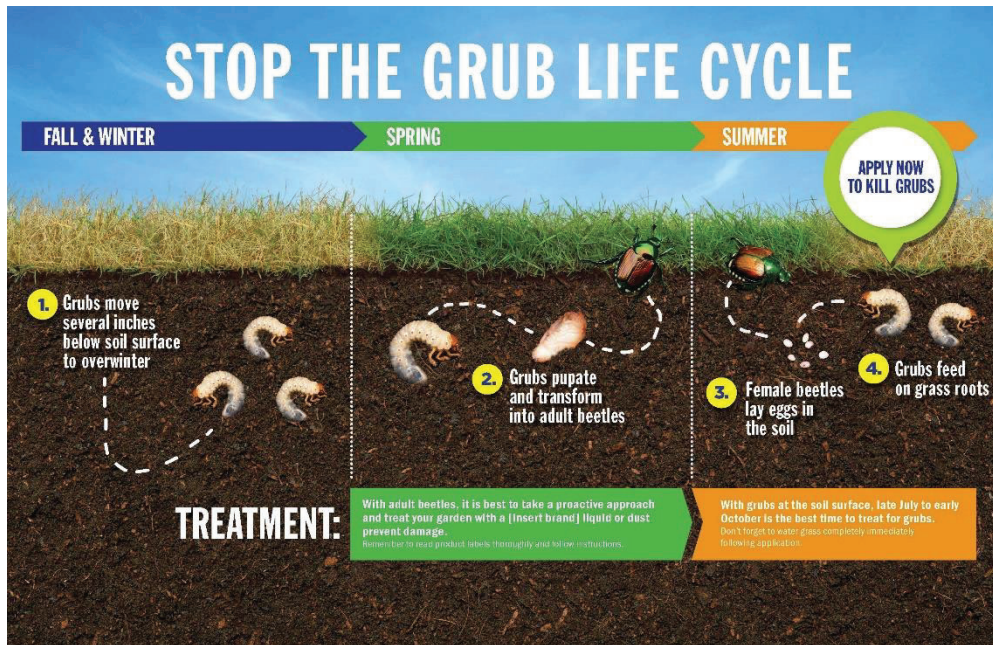
Quick [Reference Table 2][Facts] {NOTE to Reviewer: Table below is optional}

{Graphic 3 and/or graphic 5 from appendix may be inserted here}

[Product Facts]	[Insert listed claim(s)]
[Where to Use]	Lawns [and around house foundation] [Insert listed claim(s)]
[When to Use]	[When [grubs], [insects], [or] [damage] first appear]
Kills	[Insert listed pests] [And other listed [pests] [insects] [bugs]] [Insert listed claim(s)]
[How Much to Use]	[0.8-2 lbs. per 1,000 square feet] [See spreader settings]
[Coverage]	[8-20lb.] [Treats][covers] [up to] [10,000] sq. ft.
[People & Pets]	[Insert listed claim(s)]

Appendix:

[Graphic 1] {Note to PM: This will be a chart illustrating the grub lifecycle through spring, summer and fall}



[Graphic 2][Before and After Images:]



[Before]
[Grub damage in lawn]
[Grubs below the lawn]

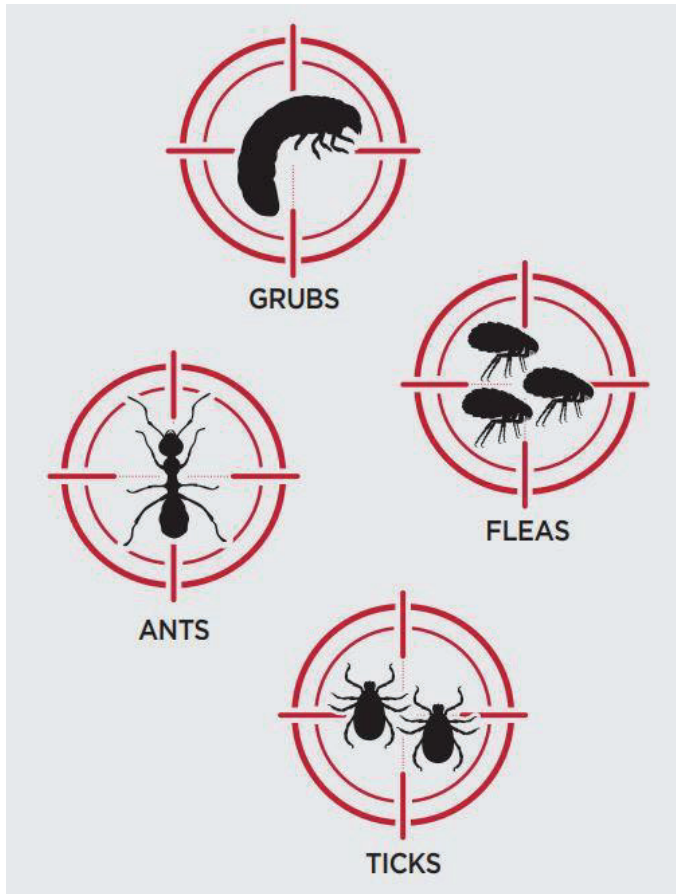


[Before]
[Grub damage in lawn]



[After] [Treatment]

[Graphic 3][Example of Target Pests] {Icons may be used for any of the listed pests below}



[Graphic 4][Guarantee Logo]



[Graphic 5][Quick Fact Chart]

