



**UNITED STATES ENVIRONMENTAL PROTECTION AGENCY**  
**WASHINGTON, DC 20460**

**OFFICE OF CHEMICAL SAFETY  
AND POLLUTION PREVENTION**

August 5, 2022

Lisa Adamson  
Regulatory Manager  
Control Solutions, Inc.  
5903 Genoa-Red Bluff  
Pasadena, TX 77507-1041

**Subject:** Label Amendment – add optional marketing claims, optional state specific language, optional icon images and Bifenthrin ID mitigation language  
Product Name: Control XX-X-X Lawn Food with 0.069% Bifenthrin Insecticide  
EPA Registration Number: 53883-160  
Application Date: 2/22/2022, 2/22/2021  
Decision Number: 582755, 571504

Dear Ms. Adamson:

The amended label referred to above, submitted in connection with registration under the Federal Insecticide, Fungicide, and Rodenticide Act (FIFRA), as amended, is acceptable. This approval does not affect any conditions that were previously imposed on this registration. You continue to be subject to existing conditions on your registration and any deadlines connected with them.

The Agency, in accordance with the Federal Insecticide, Fungicide and Rodenticide Act (FIFRA), as amended, has completed reviewing all of the information submitted with your application to support the Registration Review of the above referenced product in connection with the Bifenthrin Interim Decision, and has concluded that your submission is acceptable.

A stamped copy of your labeling is enclosed for your records. This labeling supersedes all previously accepted labeling. You must submit one copy of the final printed labeling before you release the product for shipment with the new labeling. In accordance with 40 CFR 152.130(c), you may distribute or sell this product under the previously approved labeling for 12 months from the date of this letter. After 12 months, you may only distribute or sell this product if it bears this new revised labeling or subsequently approved labeling. "To distribute or sell" is defined under FIFRA section 2(gg) and its implementing regulation at 40 CFR 152.3.

Should you wish to add/retain a reference to the company's website on your label, then please be aware that the website becomes labeling under FIFRA and is subject to review by the Agency. If the website is false or misleading, the product would be misbranded and unlawful to sell or distribute under FIFRA section 12(a)(1)(E). 40 CFR 156.10(a)(5) lists examples of statements EPA may consider false or misleading. In addition, regardless of whether a website is referenced on your product's label, claims made on the website may not substantially differ from those

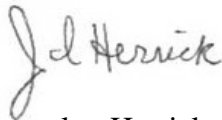
Page 2 of 2  
EPA Reg. No. 53883-160  
Decision No. 582755, 571504

claims approved through the registration process. Therefore, should the Agency find or if it is brought to our attention that a website contains false or misleading statements or claims substantially differing from the EPA approved registration, the website will be referred to the EPA's Office of Enforcement and Compliance.

Your release for shipment of the product constitutes acceptance of these conditions. If these conditions are not complied with, the registration will be subject to cancellation in accordance with FIFRA section 6.

If you have any questions, you may contact Hester Dingle at 202-566-2596 or via email at [dingle.hester@epa.gov](mailto:dingle.hester@epa.gov).

Sincerely,

A handwritten signature in cursive script that reads "J. Herrick".

Jacquelyn Herrick, Product Manager 03  
Invertebrate & Vertebrate Branch 1  
Registration Division (7505T)  
Office of Pesticide Programs

Enclosure

**Control XX-X-X Lawn Food  
with .069% Bifenthrin Insecticide**

{\*Note to reviewer: XX-X-X may be replaced with guarantees of a maximum of 46% Nitrogen, 52% Phosphorous, and/or 62% Potassium in any number combinations}

[Optional Marketing Statement]

This is a Double Action product with Lawn Food and Bifenthrin Insecticide Feeds the Lawn and controls listed lawn insects including Ants (including Imported Fire Ants), Mole Crickets, Sod Webworms, Chinch Bugs and other listed Pests. For Lawns, in Landscape areas, around Residential, Commercial, Institutional, Public, and Industrial Buildings, Parks, Recreational Lawns, and Athletic Fields.

For outdoor use only.

[Optional Marketing Statements-

- Controls 17 Listed Insects
- Provides insect control in the lawn while feeding desirable grasses
- Controlled-release nitrogen keeps grass green longer
- Use for perimeter insect control applications
- Bifenthrin provides control of surface feeding insects including chinch bugs, sod webworm, mole crickets, ticks, imported fire ants, as well as other listed pests. For lawn and landscape areas around residential, commercial, institutional, industrial buildings, parks, recreational lawns, and athletic fields.
- Ideal where zero phosphorous is desired] (If marketed with fertilizer containing no Phosphorous)
- Kills listed insects
- Kills listed insects and fertilizes the lawn
- Summer Phase 3 [Phase 3 of a 4 phase process for best results]
- Contains LESCO® Poly Plus® Polymer Coated Urea to provide a uniform growth with extended nitrogen feeding
- Contains LESCO® Poly Plus® Sulfur Coated Urea to provide a uniform growth with extended nitrogen feeding
- Contains LESCO® Poly Plus® OPTI™ Polymer Coated Urea to provide a uniform growth with extended nitrogen feeding.
- Contains LESCO NOS™ (Nitrogen Optimizing System) for increased nitrogen use efficiency and extended greening.
- Contains LESCO NOS™ Plus (Nitrogen Optimizing System) for increased nitrogen use efficiency and extended greening.
- Contains LESCO® SulfRX™ Polymer Coated Sulfur Coated Urea to provide a uniform growth with extended nitrogen feeding.
- with slow release (N) FERTILIZER
- Slow-release nitrogen-helps provide extended feeding
- Treats up to 5,000 sq. ft.]

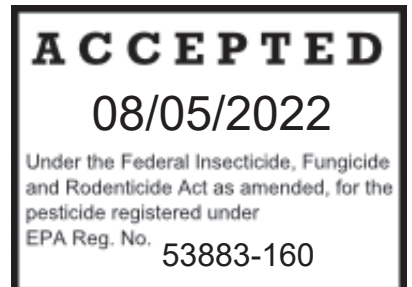
ACTIVE INGREDIENT:

Bifenthrin\* CAS [83322-82657].....0.069%

OTHER INGREDIENTS:.....99.931%

TOTAL:.....100.000%

\*Cis isomers 97% minimum; trans. isomers 3% maximum.



## KEEP OUT OF REACH OF CHILDREN CAUTION

See other panels for Additional Precautionary Statements.

FIRST AID	
Have the product container or label with you when calling a poison control center or doctor, or going for treatment. You may also contact SafetyCall® at (866) 897-8050 for emergency medical treatment information.	
If in eyes	<ul style="list-style-type: none"><li>• Hold eye open and rinse slowly and gently with water for 15-20 minutes.</li><li>• Remove contact lenses, if present, after the first 5 minutes, then continue rinsing eye.</li><li>• Call a poison control center or doctor for treatment advice.</li></ul>

### PRECAUTIONARY STATEMENTS HAZARDS TO HUMANS AND DOMESTIC ANIMALS

CAUTION: Causes moderate eye irritation. Avoid contact with eyes, skin or clothing. Wash thoroughly with soap and water after handling and before eating, drinking, chewing gum, using tobacco or using toilet.

### ENVIRONMENTAL HAZARDS

This product is extremely toxic to fish and aquatic invertebrates. Do not apply when weather conditions favor drift and runoff from treated areas. Drift and runoff from treated areas may be hazardous to aquatic organisms in neighboring areas.

To protect the environment, do not allow pesticide to enter or run off into storm drains, drainage ditches, gutters or surface waters. Applying this product in calm weather when rain is not predicted for the next 24 hours will help to ensure that wind or rain does not blow or wash pesticide off the treatment area. Sweeping any product that lands on a driveway, sidewalk, or street, back onto the treated area of the lawn or garden will help to prevent run off to water bodies or drainage systems.

### DIRECTIONS FOR USE

It is a violation of Federal law to use this product in a manner inconsistent with its labeling.

Apply this product directly to the lawn or garden area. Water treated area as directed on this label. Do not water to the point of run-off.

Do not make applications during the rain.

Application is prohibited directly into sewers or drains, or to any area like a gutter where drainage to sewers, storm drains, water bodies, or aquatic habitat can occur. Do not allow the product to enter any drain during or after application.

Do not allow children or pets to enter the area until dry.

Do not apply more than 580 lbs. per acre (13.3 lbs. per 1,000 square feet), of this product per year. Not for use on turf being grown for sale or other commercial use as sod, or for commercial greenhouses, nurseries, commercial seed production or research purposes.

Apply Control xx-x-x Lawn Food with .69% Bifenthrin Insecticide when insects first appear. Apply this product evenly with a properly calibrated drop or rotary spreader over the entire turfgrass area at a rate of 3.33 to 6.66 pounds per 1,000 square feet. A uniform application is most desirable and is best achieved by spreading half of the required amount of products over the area and then applying the remaining half with swaths at a right angle to the first. Irrigate the treated area immediately after application for best results.

For applications at rates above 0.34 lb ai/A (11 lbs of product/1000 ft<sup>2</sup>), users must water the treated area immediately after application.

#### **Water Protection Statements**

Do not spray the product into fish pools, ponds, streams, or lakes. Do not apply directly to sewers or storm drains, or to any area like a drain or gutter where drainage to sewers, storm drains, water bodies, or aquatic habitat can occur.

Do not allow the product to enter any drain during or after application.

Do not apply directly to impervious horizontal surfaces such as sidewalks, driveways, and patios except as a spot or crack-and-crevice treatment.

Do not apply or irrigate to the point of runoff.

#### **Wind speed requirement for ornamental/recreational turf applications**

Do not apply when the wind speed is greater than 15 mph.

For soil applications, do not apply by ground within 25 feet of lakes, reservoirs, rivers, permanent streams, marshes or natural ponds, estuaries and commercial fish farm ponds.

#### **STORAGE AND DISPOSAL**

Do not contaminate water, food, or feed by storage or disposal.

**PESTICIDE STORAGE:** Store product in its original container in a cool, dry, locked place out of the reach of children and animals.

**PESTICIDE DISPOSAL:** Wastes resulting from the use of this product may be disposed of on site or at an approved waste disposal facility. Never pour unused product down any indoor or outdoor drain.

**CONTAINER DISPOSAL: If empty:** Non-refillable container. Do not reuse or refill this container. Offer for recycling, if available. Do not rinse unless required for recycling. If recycling is not available: then dispose of container in a sanitary landfill or, if allowed by State and local authorities, by burning. If burned, stay out of smoke.

**If partly filled:** Call your local solid waste agency for disposal instructions. Never pour unused product down any indoor or outdoor drain.

**The contents of this 17 [16.65] lb. bag feeds up to 5,000 sq.ft.**

**The contents of this 34 lb. bag feeds up to 10,000 sq.ft.**

**The contents of this 50 lb. bag feeds up to 15,000 sq.ft.**

#### **LAWN AND PERIMETER APPLICATIONS**

Control xx-x-x Lawn Food with .69% Bifenthrin Insecticide is intended to prevent and reduce insect entry to homes and businesses. When using this product as directed, apply a 7 foot wide

band to the lawn areas around and adjacent to the structure. Observe and apply the following application rates.

<b>LAWN APPLICATION</b>	
<b>Apply 3.33 lbs. per 1,000 sq.ft.</b>	<b>Apply 6.66 lbs. per 1,000 sq.ft.</b>
Annual Bluegrass, Weevils (Hyperodes Adult)	**Ants, **Centipedes,
Armyworms,	*Fire Ants,
Billbugs (Adult),	**Fleas,
Black Turfgrass Ataenuis (Adult),	Leafhoppers, **Millipedes,
Cutworms,	**Mole Crickets,
Mealybugs,	**Chinch Bugs,
Sod Webworms,	Ticks and Chiggers

\*Control xx-x-x Lawn Food with .69% Bifenthrin Insecticide will provide optimum control of Imported Fire Ants if combined with a mound treatment. A broadcast application of the area to be treated will control foraging worker ants and newly mated queens. In addition a mound treatment at the same time will aid in the destruction of the existing colony. For controlling mounds use a registered pesticide labeled for treatment of fire ant mounds. \*\*The highest labeled rate noted on the application table may be required to control Imported Fire Ants as well as Chiggers, Centipedes, Chinch Bugs, Fleas, Millipedes and other foraging ants.

**OPTIONAL TEXT WHEN MARKETED IN NEW YORK STATE**

In New York State this product may not be applied to any grass or turfgrass within 100 ft. of a water body (lake, pond, river, stream, wetland, drainage ditch). In New York State do make a single repeat application if there are signs of renewed insect activity, but not sooner than 2 weeks after the first application.

**[Suggested] Spreader Settings**

{\*Note to reviewer: XX in the charts represents the setting number for the specific spreader type that will allow the applicator to make the appropriate application rate.} (3.33 lbs of ai/1000 ft<sup>2</sup> or 6.66 lbs of ai/1000 ft<sup>2</sup>)

Varied conditions will affect the application rates of spreaders; therefore the settings listed below are approximate. Age and conditions of spreader and walking speed can cause variation in application rate. Calibrate your spreader with each application. Close spreader hopper and adjust the setting using the suggested settings chart below. Fill spreader on a hard surface to eliminate the chance of spillage on the lawn. Close spreader hopper when stopping or turning.

<b>DROP SPREADERS:</b>	
Yard Star 75350.....XX	Precision FH22.....XX
Republic EZ 7.....XX	Scotts Acugreen.....XX

<b>BROADCAST SPREADERS:</b>	
Yard Star 75450.....XX	Precision SB50P....XX
Republic EZGROW 75450.....XX	
Scotts Easygreen 745 XX	Scotts Speedygreen 740 XX

**GUARANTEED FERTILIZER ANALYSIS**

{\*Note to reviewer: XX-X-X may be replaced with guarantees of a maximum of 46% Nitrogen, 52% Phosphorous, and/or 62% Potassium in any number combinations}

Total Nitrogen (N) - - - - - Variable XX%  
variable XX% Ammonical Nitrogen  
variable XX% Water Soluble Nitrogen  
variable XX% Water Insoluble Nitrogen  
Available Phosphate (P<sub>2</sub>O<sub>5</sub>) Variable XX%  
Available Potash (K<sub>2</sub>O) Variable XX%

Plant Nutrients derived from Diammonium Phosphate,  
Urea formaldehyde, Urea, Sulfate of Ammonia,  
Sulfur coated Urea, Sulfate of Potash, Magnesium,  
Statement of Secondary Plant Nutrients.

**Optional State-Specific Fertilizer Use Language:**

NOTE: Supplemental applications of lawn fertilizer may be needed to achieve 1 pound nitrogen per 1,000 sq. ft.

Florida Applications: Apply at the rate of 3.33 pounds per 1,000 sq. ft. Do not exceed 2 applications per year.

NOTICE - Boron and molybdenum are recommended for all crops where boron and molybdenum may be deficient; however, excessive application to susceptible crops may cause damage. Crops high in molybdenum may be toxic to ruminant animals.

A lawn typically will utilize 1 to 4 pounds of nitrogen per 1,000 square feet per growing season. When used as directed, this product will supplement your regular fertilizer program by providing 0.4 to 0.8 pounds of nitrogen per 1,000 square feet and herbicide to control listed weeds. Please consult your local extension office for questions regarding a regular fertilizer program.

Information concerning the raw materials composing this product can be obtained by writing to the Guarantor listed on this container and referring to the batch number found on this container.

Information regarding the contents and levels of metals in this product is available on the internet at <http://www.aapfco.org/metals.html>]

MASTER Label  
Additional Optional Marketing Statements

NOTICE: Buyer and user assume all risk and liability of use, storage and/or handling of this product not in accordance with the terms of this label.

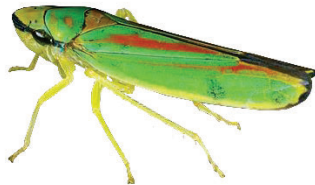
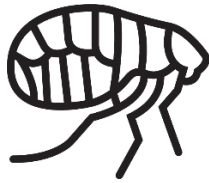
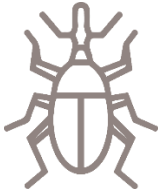
Control Solutions, Inc.  
5903 Genoa-Red Bluff Road  
Pasadena, TX 77507-1041

EPA Reg.No.:53883-160  
EPA Est.No.: 53883-TX-002

Net Weight	16.65 pounds
	17 pounds
	34 pounds
	50 pounds



*Optional icons*



MASTER Label  
Additional Optional Marketing Statements

