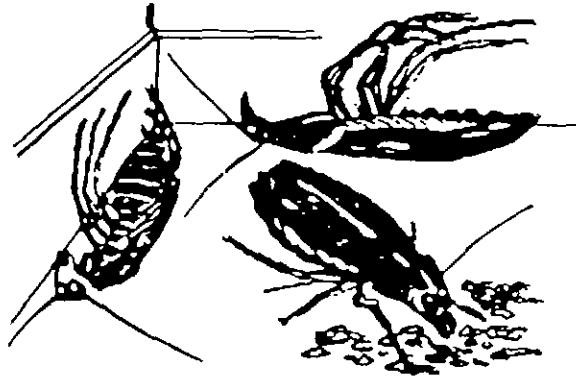


ACCEPTED

JUL 16 1985

Under the Federal Insecticide,  
Fungicide, and Rodenticide Act,  
as amended, for the pesticide  
registered under  
EPA Reg. No. 52363-3

# ROACH Away III



ODORLESS, NON-STAINING POWDER

Kills ROACHES (water bugs)

ACTIVE INGREDIENT:  
ORTHO BORIC ACID - 99%  
INERT INGREDIENTS - 1%

Net Contents ~~2~~ 1 lb.

FILLED BY WEIGHT, NOT VOLUME

KEEP OUT OF REACH OF CHILDREN

## CAUTION

SEE BACK PANEL FOR OTHER  
CAUTIONS AND DIRECTIONS

### STATEMENT OF PRACTICAL TREATMENT

Immediately contact Physician or Poison Control Center if swallowed.  
If eye contact occurs flush eyes with plenty of water. Get medical  
attention if irritation persists.

BEST AVAILABLE COPY

Apply as a spot treatment to selective surfaces such as baseboards, under elements of construction into cracks and crevices. Avoid treating surfaces likely to be contacted by food. (Do not apply when facility is in operation or foods are exposed.)

**NON-FOOD AREAS.** Includes garbage rooms, lavatories, floor drains (to sewer entries and vestibules), offices, locker rooms, machine rooms, boiler rooms, garages, mop closets and storage (after canning or bottling.)

Apply to baseboard areas, around water pipes, surfaces behind and beneath sinks, lockers, tables, pallets and similar areas where insects hide or through which they may enter.

**DIRECTIONS FOR APPLYING IN NEW CONSTRUCTION TO CONTROL COCKROACHES.** When treating large areas, such as wall voids, soffit and subcabinet voids in new and existing construction, dust liberally using dusting application equipment.

**DIRECTIONS FOR APPLYING IN SEWERS TO CONTROL COCKROACHES.** Apply 1 lb. of product in each sewer manhole using dusting application equipment.

#### DISPOSAL

Do not reuse empty container. Wrap and place in trash collection.

EPA Reg. No. 52363- EPA Est. No. 52363-CA-01  
Product Code # 3

Manufactured by

**ROACH-A-WAY**  
P.O. Box 3512  
Van Nuys, CA 91407

This product may be used in the following: HOMES, RESTAURANTS, SCHOOLS, MARKETS, WAREHOUSES, FACTORIES, OFFICES, HOTELS, MOTELS, HOSPITALS, NURSING HOMES, GARAGES, GROCERY STORES, APARTMENT BUILDINGS, NEW CONSTRUCTION, INDUSTRIAL PLANTS, THEATERS, SHIPS, BOATS, TRAINS, MILITARY BASES, LIBRARIES, UTILITIES AND OTHER FOOD AND FEED HANDLING ESTABLISHMENTS, AND SIMILAR.

ROACH-A-WAY II is an odorless, non-staining, non-flammable powder, for killing roaches (water bugs). When roaches pass through the powder, they clean their bodies by ingesting the powder, which in turn, kills the roaches. To be effective, powder must remain dry. If wet, replace with dry powder. Allow two weeks for elimination of roach infestation.

#### PRECAUTIONARY STATEMENTS

##### HAZARD TO HUMANS AND DOMESTIC ANIMALS CAUTION

Harmful if swallowed. May cause eye irritation. Avoid eye contact. Wash thoroughly after handling.

#### DIRECTIONS FOR USE

It is a violation of Federal law to use this product in a manner inconsistent with its labeling.

##### SHAKE WELL BEFORE USING

To control cockroaches, ants and silverfish, apply liberally, scattering under and behind refrigerator, stove, sink, dishwasher, washing machine and dryer, tubs; into openings around drains, sewers, manholes, water pipes and electrical conduits; in cracks and crevices along baseboards and in corners of cabinets, cupboards, and closets. Remove all lower drawers in kitchen and bathroom cabinets, bedroom dressers and chests of drawers, then scatter liberally in drawer wells.

Reapply as necessary. Any powder visible after application must be brushed into cracks and crevices or removed. Apply only in areas inaccessible to children and pets. Avoid contamination of feed and foodstuffs.

FOOD AND FEED HANDLING ESTABLISHMENTS. Places other than private residences in which exposed food or feed is held, processed, prepared or served.

##### FOOD AREA-APPLICATION LIMITED TO CRACK AND CREVICE TREATMENT ONLY.

Includes areas for receiving, storage, packing (canning, bottling, wrapping, boxing) preparing, edible waste storage and enclosed processing systems such as mills, dairies, bakeries, restaurants or anywhere food or feed is stored, processed, prepared or served. Serving areas (when food is exposed and facility is in operation) also would be considered a food area.

Apply in small amounts directly into cracks and crevices using a bulbous duster or other suitable equipment capable of applying insecticide directly into cracks and crevices, in points between different elements of construction, between equipment and floors, openings leading to voids and hollow spaces in walls, equipment legs and bases, conduits, motor housing and electrical switch boxes where cockroaches hide.

Care should be taken to avoid depositing the product onto exposed food and feed processing, preparation and serving surfaces or introducing the material into the air. Avoid contamination of food or feed processing surfaces.

APPLICATIONS OF THIS PRODUCT IN THE FOOD AND FEED AREAS OF FOOD HANDLING ESTABLISHMENTS, OTHER THAN AS A CRACK AND CREVICE TREATMENT, ARE NOT PERMITTED.

SERVING AREAS. Facilities where prepared foods are served, such as dining rooms, but excluding areas where foods may be prepared or held.