



OFFICE OF CHEMICAL SAFETY AND POLLUTION PREVENTION

WASHINGTON, D.C. 20460

October 29, 2025

Brad Glenn
bglenn@harrells.com
HARRELL'S, LLC

Subject: Non-PRIA (Pesticide Registration Improvement Act) Labeling Amendment - The word "control" was removed from two use rate table titles. For some of the weeds under the 3.0 lb a.i./A rate, a symbol designating "suppression" were added along with a description.
Product Name: FERTILIZER WITH RONSTAR 1.0
Admin Number: 52287-24
EPA Receipt Date: 06/10/2025
Action Case Number: 00663680

Dear Brad Glenn:

The amended labeling referred to above, submitted in connection with registration under the Federal Insecticide, Fungicide, and Rodenticide Act, as amended, is acceptable.

This approval does not affect any terms or conditions that were previously imposed on this registration. You continue to be subject to existing terms or conditions on your registration and any deadlines connected with them.

A stamped copy of your labeling is enclosed for your records. This labeling supersedes all previously accepted labeling. You must submit one (1) copy of the final printed labeling before you release this product for shipment with the new labeling. In accordance with 40 CFR § 152.130(c), you may distribute or sell this product under the previously approved labeling for 18 months from the date of this letter. After 18 months, you may only distribute or sell this product if it bears this new revised labeling or subsequently approved labeling. "To distribute or sell" is defined under FIFRA section 2(gg) and its implementing regulation at 40 CFR § 152.3.

Should you wish to add/retain a reference to your company's website on your label, then please be aware that the website becomes labeling under FIFRA and is subject to review by EPA. If the website is false or misleading, the product will be considered to be misbranded and sale or distribution of the product is unlawful under FIFRA section 12(a)(1)(E). 40 CFR § 156.10(a)(5) lists examples of statements the EPA may consider false or misleading. In addition, regardless of whether a website is referenced on your product's label, claims made on the website may not substantially differ from those claims approved through the registration process. Therefore, should the EPA find or if it is brought to our attention that a website contains statements or claims substantially differing from statements or claims made in connection with obtaining a FIFRA section 3 registration, the website will be referred to the EPA's Office of Enforcement and Compliance Assurance.

Your release for shipment of this product constitutes acceptance of these terms. If these terms are not complied with, this registration will be subject to cancellation in accordance with FIFRA section 6.

If you have questions, please contact Jeffrey Chang via email at chang.jeffrey@epa.gov.

Sincerely,

Kable Bo Davis

Kable Bo Davis, Senior Advisor
FHB, RD
Office of Pesticide Programs

Note to PM:

Bold, italicized text is for the reader and is not a part of the label.

[Bracketed information is optional] Text separated by / denotes and/or options

RESTRICTED USE PESTICIDE

Due to potential human health risks of concern (cancer) from chronic dietary or dermal exposure when used in accordance with label directions.

FOR RETAIL SALE TO AND USE ONLY BY CERTIFIED APPLICATORS OR PERSONS UNDER THEIR DIRECT SUPERVISION AND ONLY THOSE USES COVERED BY THE CERTIFIED APPLICATOR'S CERTIFICATION.



OXADIAZON	GROUP	14	HERBICIDE
-----------	-------	----	-----------

FERTILIZER WITH RONSTAR® 1.0

[Alternate Brand Names: Fertilizer W/ Ronstar® 1.0; Fertilizer W/ Ronstar® 1.0; Harrell's PROtect Professional Fertilizer plus Ronstar® 1.0; Turf & Ornamental Fertilizer W/ Ronstar® 1.0; Landscape Ornamental Fertilizer W/ Ronstar® 1.0; Fertilizer W/ Oxadiazon 1.0]

[Batch Number] [SKU Number] [Fertilizer N-P-K] [Bulk] [Density] [xx lbs. per cu. ft]

SELECTIVE PREEMERGENT HERBICIDE for the control of annual grasses and broadleaf weeds. For use only on turf, ornamentals, nursery trees, rights-of-way, and landscape plantings. Not for use on turfgrass on residential properties.

ACTIVE INGREDIENT:

Oxadiazon 1.0%

OTHER INGREDIENTS: 99.0%

TOTAL 100.0%

Net Weight: 50 lb. (22.7 kg), 1,000 lb. (453.4 kg), 2,000 lb. (907.2 kg), or bulk trailers

KEEP OUT OF REACH OF CHILDREN

WARNING AVISO

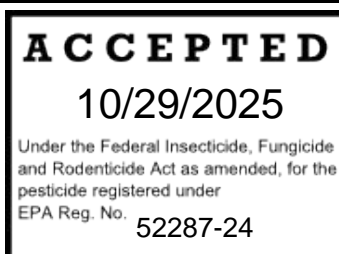
Si usted no entiende la etiqueta, busque a alguien para que se la explique a usted en detalle.
(If you do not understand the label, find someone to explain it to you in detail.)

READ THE ENTIRE LABEL BEFORE USING

[See additional Precautionary Statements, First Aid, and Directions for Use inside label]

EPA Reg. No. 52287-24

EPA Est. No. 52287-FL-1



Note to PM:

Bold, italicized text is for the reader and is not a part of the label.

[Bracketed information is optional] Text separated by / denotes and/or options

FIRST AID

If on skin:	<ul style="list-style-type: none">• Take off contaminated clothing.• Rinse skin immediately with plenty of water for 15-20 minutes.• Call a poison control center or doctor for treatment advice.
If inhaled:	<ul style="list-style-type: none">• Move person to fresh air.• If person is not breathing, call 911 or an ambulance, then give artificial respiration, preferably mouth-to-mouth if possible.• Call a poison control center or doctor for further treatment advice.
If in eyes:	<ul style="list-style-type: none">• Hold eyes open and rinse slowly and gently with water for 15-20 minutes. Remove contact lenses, if present, after the first 5 minutes, then continue rinsing.• Call a poison control center or doctor for treatment advice.
If swallowed:	<ul style="list-style-type: none">• Call a poison control center or doctor immediately for treatment advice.• Have person sip a glass of water if able to swallow.• Do not induce vomiting unless told to do so by a poison control center or doctor.• Do not give anything by mouth to an unconscious person.
Have the product container or label with you when calling a poison control center or doctor or going for treatment.	

For **MEDICAL** Emergencies Call 24 Hours a Day: 1-800-304-0824

For **TRANSPORTATION** Emergencies Call 24 Hours a Day 1-800-424-9300

For **PRODUCT USE** information Call 1-800-282-8007

PRECAUTIONARY STATEMENTS

HAZARDS TO HUMANS AND DOMESTIC ANIMALS

WARNING

Causes skin irritation. Harmful if absorbed through skin. Harmful if inhaled. Do not get on skin or clothing. Avoid contact with eyes. Causes moderate eye irritation. Avoid breathing dust. Wash thoroughly with soap and water after handling and before eating, drinking, chewing gum, using tobacco, or using the toilet. Remove contaminated clothing and wash clothing before reuse.

PERSONAL PROTECTIVE EQUIPMENT (PPE)

Loaders, applicators and other handlers must wear coveralls worn over short-sleeved shirt and short pants, socks, chemical-resistant footwear, and waterproof gloves. Follow manufacturer's instructions for cleaning/maintaining PPE. If no such instructions for washables exist, use detergent and hot water. Keep and wash PPE separately from other laundry.

User Safety Recommendations

Users should:

- Wash thoroughly with soap and water before eating, drinking, chewing gum, using tobacco or using the toilet.
- Remove clothing immediately if pesticide gets inside, then wash thoroughly and put on clean clothing.
- Remove PPE immediately after handling this product Wash the outside of gloves before removing. As soon as possible, wash thoroughly and change into clean clothing.

ENVIRONMENTAL HAZARDS

Note to PM:

Bold, italicized text is for the reader and is not a part of the label.

[Bracketed information is optional] Text separated by / denotes and/or options

This pesticide is toxic to oysters, and shrimp. Runoff may be hazardous to aquatic organisms in water adjacent to treated areas. [Turf Fertilizer with RONSTAR® 1.0] / [This product] should not be used in areas where irrigation or rainfall results in the direct or indirect (via ditches and canals) contamination of surface waters through dissolved runoff or erosion of soil particles to which oxadiazon is absorbed.

For terrestrial uses: Do not apply directly to water, or to areas where surface water is present, or to intertidal areas below the mean high water mark. Do not contaminate water when disposing of equipment washwater or rinsate.

Ground Water Advisory

This chemical has properties and characteristics associated with chemicals detected in groundwater. This chemical may leach into groundwater if used in areas where soils are permeable, particularly where the water table is shallow.

Surface Water Advisory

This product may impact surface water quality due to rainwater. This is especially true for poorly draining soils and soils with shallow groundwater. This product is classified as having high potential for reaching surface water via runoff for several months or more after application. A level well-maintained vegetative buffer strip between areas to which this product is applied and surface water features such as ponds, streams, and springs will reduce the potential loading of oxadiazon from runoff water and sediment.

NON-TARGET ORGANISM ADVISORY: This product is toxic to plants and may adversely impact the forage and habit of non-target organisms, including pollinators, in areas adjacent to the treated site. Protect the forage and habitat of non-target organisms by following label directions intended to minimize drift.

DIRECTIONS FOR USE

Restricted Use Pesticide

It is a violation of Federal law to use this product in a manner inconsistent with its labeling.

DO NOT apply this product in a way that will contact workers or other persons, either directly or through drift. Only protected handlers may be in the area during application. For any requirements specific to your State or Tribe, consult the agency responsible for pesticide regulation.

AGRICULTURAL USE REQUIREMENTS

Use this product only in accordance with its labeling and with the Worker Protection Standard, 40 CFR part 170. This standard contains requirements for the protection of agricultural workers on farms, forests, nurseries and greenhouses, and handlers of agricultural pesticides. It contains requirements for training, decontamination, notification and emergency assistance. It also contains specific instructions and exceptions pertaining to the statements on this label about personal protective equipment (PPE) notification to workers, and restricted-entry intervals. The requirements in this box only apply to uses of this product that are covered by the Worker Protection Standard (sod farm, commercial nurseries).

Do not enter or allow worker entry into treated areas during the restricted entry interval (REI) of 12 hours.

Note to PM:

Bold, italicized text is for the reader and is not a part of the label.

[Bracketed information is optional] Text separated by / denotes and/or options

PPE required for early entry to treated areas that is permitted under the Worker Protection Standard and that involves contact with anything that has been treated, such as plants, soil, or water, is:

- Coveralls,
- Shoes plus socks, and
- Waterproof gloves

NON-AGRICULTURAL USES REQUIREMENTS

The requirements of this box apply to uses of this product that are NOT within the scope of the Worker Protection Standard for agricultural pesticides (40 CFR part 170). The “WPS” applies when this product is used to produce agricultural plants on farms, forests, nurseries, or greenhouses.

Do not enter or allow others to enter treated areas until dusts have settled and the turfgrass or soil is dry after treatments are watered in.

WEED-RESISTANCE MANAGEMENT

For resistance management, Fertilizer with Ronstar® 1.0 contains the active ingredient Oxadiazon, a Group 14 Herbicide as determined by the mode of action (MOA) classification system of the Weed Science Society of America. Any weed population may contain or develop plants naturally resistant to Fertilizer with Ronstar® 1.0 Group 14 herbicides. The resistant biotypes may dominate the weed population if these herbicides are used repeatedly in the same field. Appropriate resistance-management strategies should be followed. Continued effectiveness of this product depends on the successful implementation of a weed resistance management program.

To delay herbicide resistance users should take one or more of the following steps:

- Rotate the use of Fertilizer with Ronstar® 1.0 and other Group 14 herbicides within a growing season sequence, or among growing seasons with different herbicide groups that control the same weeds in a field.
- Adopt an integrated weed-management program for herbicide use that includes:
 - Scouting and uses historical information related to herbicide use and crop rotation, and
 - Consideration of tillage (or other mechanical control methods), and
 - Cultural (e.g., higher crop seeding rates), and
 - Precision fertilizer application method and timing to favor the crop and not the weeds), and
 - Biological (weed-competitive crops or varieties) and other management practices.
- Scout fields prior to application to identify the weed species present and their growth stage to determine if the intended application will be effective.
- Scout fields after herbicide application to monitor weed populations for early signs of resistance development. Indicators of possible herbicide resistance include:
 - Failure to control a weed species normally controlled by the herbicide at the dose applied, especially if control is achieved on adjacent weeds, or
 - A spreading patch of non-controlled plants of a particular weed species or,
 - Surviving plants mixed with controlled individuals of the same species.
- If resistance is suspected, prevent weed seed production in the affected area by using an alternative herbicide from a different group or by a mechanical method such as hoeing or tillage. Prevent

Note to PM:

Bold, italicized text is for the reader and is not a part of the label.

[Bracketed information is optional] Text separated by / denotes and/or options

movement of resistant weed seeds to other fields by cleaning harvesting and tillage equipment when moving between fields and planting clean seed.

- If a weed pest population continues to progress after treatment with this product, discontinue use and switch to another management strategy or herbicide with a different mode of action, if available.
- Contact your local extension specialist or certified crop advisors for additional pesticide resistance-management and/or integrated weed-management recommendations for specific crops and weed biotypes.
- Report any incidence of local non-performance of this product against a particular weed species to your [Harrell's] [company] representative at (800) 282-8007, [and/or at <https://www.harrells.com>].

BEST MANAGEMENT PRACTICES

Proactively develop and implement diversified weed control strategies to minimize selection for weed populations resistant to one or more herbicides. A diversified program may include the use of herbicides with different modes of action along with cultural, mechanical, and/or biological practices. Best management practices include the following:

- To the extent possible, use a diversified approach toward weed management. Whenever possible incorporate multiple weed-control practices such as mechanical cultivation, biological management practices, and crop rotation.
- Plant into weed-free fields and keep fields as weed-free as possible.
- Identify weeds present in the field through scouting and field history and understand their biology. The weed-control program should consider all the weeds present. Apply this herbicide at the correct timing and rate needed to control the most difficult weed in the field.
- Fields with difficult to control weeds should be rotated to crops that allow the use of herbicides with alternative modes of action (MOA) or different management practices.
- Difficult to control weeds may require sequential applications of herbicides with differing MOA's.
- Prevent field-to-field and within-field movement of weed seed or vegetative propagules. Thoroughly clean plant residues from equipment before leaving fields.
- To the extent possible do not allow weed escapes to produce seeds, roots or tubers. Manage weed seeds at harvest and post-harvest to prevent a buildup of the seed seedbank.
- If resistance is suspected, treat weed escapes with a herbicide with a different MOA than those in this product or use non-chemical methods to remove escapes.

PRODUCT INFORMATION

Fertilizer with RONSTAR® 1.0 is a preemergent herbicide for control of many annual grasses and broadleaf weeds in turf and on a wide variety of woody ornamental shrubs, vines and trees. Fertilizer with RONSTAR® 1.0 controls weeds by killing the weed seedlings as they come in contact with the herbicide during germination. Apply Fertilizer with RONSTAR® 1.0 using a properly calibrated spreader for granular applications. Uniform application is essential for satisfactory control of listed weeds. Calibrate the spreader prior to use following the manufacturer's directions and check frequently during the application to be certain that the equipment is working properly. After application, user must thoroughly irrigate the site as soon as possible on the same day of application.

Turf Fertilizer with RONSTAR® 1.0 use on all sites:

Note to PM:

Bold, italicized text is for the reader and is not a part of the label.

[Bracketed information is optional] Text separated by / denotes and/or options

- The minimum retreatment interval (RTI) between applications is 60 days.
- Total applications of oxadiazon of all physical forms must not exceed 6.0 lbs a.i./A/year if this product is used on the same site with liquid formulations.

TURF

For use in established perennial Bluegrass, Bentgrass, Bermudagrass, Buffalograss, Perennial Ryegrass, St. Augustinegrass, Seashore Paspalum[*], Tall Fescue, and Zoysia turf. It may be used for Parks, Golf Courses, Athletic Fields, Cemeteries, and all other ornamental and recreational turfgrass areas. Not for use on turfgrass on residential properties.

Rake turf area free of leaves, mowing if necessary, so granules reach soil surface. Measure area to be treated and uniformly apply required amount, using a fertilizer spreader. Cross-treating with one-half required amount in each direction will give best results. After application, user must thoroughly irrigate the site as soon as possible on the same day of application. For the rate of 2 -4 lbs a.i./acre, on weedy turf, containing difficult to control weeds, apply this product in one application at the 3 or 4 lb rate. Use the highest rate in areas of heavy weed infestation on golf course turf only.

[RETREATMENT INTERVAL: Subsequent applications can be made 120 days after the previous treatment.]

[*not for use in California]

USE RESTRICTIONS:

- Not for use by homeowners/consumers.
- Do not use on Turfgrass on Residential Properties.
- Do not use on desirable red fescue, bentgrass varieties, dichondra, or centipedegrass since damage will occur.
- Oxadiazon use on turf has a maximum single application rate of 3.0 lbs. a.i./A (300 lbs. of product/acre), and a maximum annual application rate of 6.0 lbs. a.i./A (600 lbs. of product/acre).
- **On golf course turf only:** In areas of heavy weed infestation only, the maximum single application rate is 4.0 pounds of active ingredient per acre (400 lbs. of product/acre), and the maximum annual application rate is 8.0 pounds of active ingredient per acre (800 lbs. of product/acre). No liquid applications of oxadiazon may be applied on areas of turf treated at this maximum application rate in the same year.
- **On golf course turf only:** total applications of oxadiazon of all physical forms are limited to 30% of the total managed turf area of a golf course per year. Applications may be made to any turf surface type, including fairways, tees, greens, roughs, non-playable turf surfaces, or other managed turf areas. This 30% limit may be applied to the same, or different turf areas from year to year.
- **On golf course turf and sod farms:** a minimum 10-foot-wide untreated vegetative buffer must be maintained between the treated area and any surface water features.
- For applications on non-agricultural turf (e.g., golf courses, parks, athletic fields) that follow a liquid application, Turf Fertilizer with RONSTAR® 1.0 must be applied 60 days or later after the liquid application. After applying this product, no liquid applications of oxadiazon are allowed within the same calendar year on the same area of turf.
- For applications to non-agricultural turf (e.g., golf courses, parks, athletic fields), this product may not be applied prior to any liquid applications of oxadiazon within the same calendar year on the same area of turf.

Note to PM:

Bold, italicized text is for the reader and is not a part of the label.

[Bracketed information is optional] Text separated by / denotes and/or options

- For St. Augustine grass and Bentgrass turf, do not exceed the rate of 300 pounds per acre (3 pounds a.i.).
- Do not apply Fertilizer with RONSTAR® 1.0 through any type of irrigation system.
- Do not apply to Bentgrass turf mowed at less than 3/8 inch.
- Do not apply to newly seeded areas. [Delay new seeding until 4 months after treatment.]
- Do not overseed fairways before 60 days after application of Fertilizer with Ronstar 1.0. Do not use where *Poa trivialis* is present in overseed mix.
- DO NOT APPLY Fertilizer with this product to putting greens or tees because of the varying cultural practices used.
- ***(Note to PM: Optional State Nitrogen and Phosphorus Fertilizer Use Restrictions to be inserted as required. Example statements can be found under the Optional State Fertilizer Statements heading.)***

USE PRECAUTIONS:

- Fertilizer with Ronstar 1.0 may cause discoloration of Bentgrass, Bermudagrass and St. Augustine grass. This discoloration is temporary and normally outgrown within 2 to 3 weeks.

PREEMERGENT WEEDS

AMOUNT OF FERTILIZER WITH RONSTAR® 1.0			
WEEDS	PER ACRE	PER 1000 SQ. FT.	USE INFORMATION
Crabgrass (<i>Digitaria</i> spp.) Field Sandbur (<i>Cenchrus incertus</i>) Annual Sedge (<i>Cyperus compressus</i>)	200 – 300 lbs. (2 – 3 lb. ai/A)	4.5 – 6.76 lbs.	Apply in late winter or early spring prior to seed germination. Application made after March or April may not be fully effective
Annual Bluegrass[*] (<i>Poa annua</i> spp.) (See note following tables, below)	200 – 300 lbs. (2 – 3 lb. ai/A)	4.5– 6.76 lbs.	Apply in late summer to early fall prior to seed germination. Fertilizer with Ronstar 1.0 DOES NOT control <i>Poa annua</i> that has germinated prior to the application.
Virginia Buttonweed[†] (<i>Diodia virginiana</i>) Goosegrass[†] (<i>Eleusine indica</i>) Pigweed[†] (<i>Amaranthus</i> spp.) Florida Pusley[†] (<i>Richardia scabra</i>) Oxalis[†] (<i>Oxalis</i> spp.) Stinging Nettle[†] (<i>Urtica dioica</i>) Carpetgrass[†] (<i>Axonopus offinis</i>)	300 lbs. (3 lb. ai/A)	6.76 lbs.	Apply in early spring prior to seed germination. [†] [These weeds may only be suppressed [and not controlled] at the 300 lbs. (3 lb a.i./A) rate.]

[*Not for use in California]

FALL APPLICATION FOR SPRING WEEDS IN COOL SEASON TURF

AMOUNT OF FERTILIZER WITH RONSTAR® 1.0			
	PER ACRE	PER 1000	USE INFORMATION

Note to PM:

Bold, italicized text is for the reader and is not a part of the label.

[Bracketed information is optional] Text separated by / denotes and/or options

WEEDS		SQ. FT.	
Crabgrass, Goosegrass[†] and other annual weeds listed above.[†]	300 lbs. (3 lb. ai/A)	6.76 lbs.	For use in Bluegrass, Bentgrass, Perennial Ryegrass and Tall Fescue turf. Make application in the fall after turf has become dormant. For late, fall applications, seeding into treated areas MUST be delayed until 4 months after green up. [†] [These weeds may only be suppressed [and not controlled] at the 300 lbs. (3 lb a.i./A) rate.]

**ANNUAL BLUEGRASS CONTROL IN BERMUDAGRASS FAIRWAYS OVERSEEDED
WITH PERENNIAL RYEGRASS ONLY**

AMOUNT OF FERTILIZER WITH RONSTAR® 1.0			COOL SEASON TURF
WEEDS CONTROLLED	PER ACRE	PER 1000 SQ. FT.	USE INFORMATION
Annual Bluegrass (<i>Poa annua</i> spp.) See Note below	200 lbs. (2 lb. ai/A)	4.5 lbs.	Apply in late summer to early fall prior to <i>Poa annua</i> spp. seed germination. Any <i>Poa annua</i> spp. established when this product is applied will not be controlled. Fertilizer with RONSTAR® 1.0 will only control the <i>Poa annua</i> spp. that is established from seed every year. DO NOT overseed fairways before 60 days after an application of Fertilizer with RONSTAR® 1.0. DO NOT use where <i>Poa trivialis</i> is present in overseed mix.

NOTE: In many areas, annual bluegrass exists as at least two biotypes or subspecies of *Poa annua*. The true annual biotype is *Poa annua* spp. *annua* which germinates every year from seed, while the biotype that behaves like a perennial is *Poa annua* spp. *reptans*. This perennial biotype can survive through the summer and established plants will not be controlled by this product. Consult the extension service or University weed specialists in your area for more information.

**ANNUAL WEED CONTROL DURING BERMUDAGRASS, ZOYSIAGRASS, SEASHORE PASPALUM, AND TROPIC
LALO (*Paspalum hieronymii*) ESTABLISHMENT FROM SPRIGS[*]**

AMOUNT OF FERTILIZER WITH RONSTAR® 1.0			
WEEDS CONTROLLED	PER ACRE	PER 1000 SQ. FT.	USE INFORMATION
Crabgrass, Goosegrass, Annual Sedge, and other annual weeds as listed above.	200 – 300 lbs. (2 – 3 lb. ai/A)	4.5 – 6.76 lbs.	For Bermudagrass, make application immediately prior to or immediately after sprigging. For Seashore Paspalum, make application 10 to 14 days after sprigging. Applications made close to the time of sprigging may cause objectionable Seashore Paspalum injury. Disturbance of the soil surface after Fertilizer with RONSTAR® 1.0

Note to PM:

Bold, italicized text is for the reader and is not a part of the label.

[Bracketed information is optional] Text separated by / denotes and/or options

			application may disrupt the herbicide barrier and reduce effectiveness. Irrigate immediately after application for best results.
--	--	--	--

[*Not for use in California]

Avoid contact with flowers and shrubs except as specified elsewhere on this label.

When making applications to Tropic Lalo, applications must be made 0 – 12 days after sprigging. **DO NOT** use in areas where endangered Hawaiian Goose or nene (*Branta sandvicensis*), Hawaiian duck (*Anas wyvilliana*), Hawaiian Stilt (*Himantopus mexicanus knudseni*), or Hawaiian Moorhen (*Gallinula chloropus sandvicensis*) may feed.

WOODY ORNAMENTAL SHRUBS, VINES, TREES AND CONIFER NURSERY APPLICATION

Apply Fertilizer with RONSTAR® 1.0 anytime during the year, prior to weed seed germination, for weed control. Fertilizer with RONSTAR® 1.0 can be applied to both newly transplanted and established ornamentals. Application can be made to actively growing or dormant ornamentals. After application, user must thoroughly irrigate the site as soon as possible on the same day of application. Fertilizer with Ronstar® 1.0 must not be mixed into the soil. Cultivating or disturbing the soil may reduce the weed control activity of this product. **For residential properties, do not allow unprotected persons or pets to enter the treated areas until this product has been watered-in.**

ORNAMENTALS ON RESIDENTIAL PROPERTIES: (Not for use on turfgrass on residential properties): Fertilizer with Ronstar 1.0 may be applied to landscape beds consisting of well-defined areas of solid or mixed stands of trees, shrubs, and ground covers located around the outside of buildings and other structures as well as open areas of the residential property. The landscape beds must not include any turfgrass lawn within the defined limits of the beds. **Applications of Fertilizer with Ronstar 1.0 must be made by a professional applicator only.** Carefully measure the area of all beds to be treated in order to insure accurate application rate.

RESTRICTIONS:

- **DO NOT** apply in greenhouses as plant injury may result from co-distillation of the active ingredient onto leaf surfaces in condensate.
- **DO NOT** apply to wet foliage or under conditions in which granules will collect on leaves.
- **DO NOT** use this product in Conifer Nurseries in California
- For ornamental landscaping, trees, shrubs, and nurseries, the maximum single application rate is 3.0 lbs a.i./A, and the maximum annual application rate is 6.0 lbs a.i./A.

AMOUNT TO USE:

Ground Application—Apply Fertilizer with RONSTAR® 1.0 broadcast to ornamentals at 200 to 300 pounds of product per acre (or 4.5 to 6.76 pounds per 1,000 sq. ft.) depending on the weeds to be controlled, as listed below. Remove existing weed growth before application. Use the higher rate with expected heavier weed pressure.

Note to PM:

Bold, italicized text is for the reader and is not a part of the label.

[Bracketed information is optional] Text separated by / denotes and/or options

ANNUAL BROADLEAF WEEDS		ANNUAL GRASSES	
Bittercress	(<i>Cardamine</i> spp.)	Annual Bluegrass	(<i>Poa annua</i>)
Bristly Oxtongue[†]	(<i>Picris echioides</i>)	Annual Sedge[†]	(<i>Cyperus compressus</i>)
Carpetweed	(<i>Mollugo verticillata</i>)	Barnyardgrass [*]	(<i>Echinochloa crus-</i> <i>galli</i>)
Cheeseweed[†]	(<i>Malva parviflora</i>)	Bristly Foxtail[†]	(<i>Setaria verticillata</i>)
Common Groundsel [*]	(<i>Senecio vulgaris</i>)	Crabgrass	(<i>Digitaria</i> spp.)
Common Purslane	(<i>Portulaca oleracea</i>)	Fall Panicum	(<i>Panicum</i> <i>dichotomiflorum</i>)
Evening Primrose [*]	(<i>Oenothera</i> spp.)	Green Foxtail	(<i>Setaria viridis</i>)
Fiddleneck[†]	(<i>Amsinckia intermedia</i>)	Goosegrass [*]	(<i>Eleusine indica</i>)
Fireweed[†]	(<i>Epilobium angustifolium</i>)	Jungle Ricegrass	(<i>Echinochloa colonum</i>)
Galinsoga [*]	(<i>Galinsoga</i> spp.)	Panama Paspalum	(<i>Paspalum</i> <i>fimbriaatum</i>)
Garden Spurge†	(<i>Euphorbia hirta</i>)	Ripgut Brome grass[†]	(<i>Bromus</i> <i>catharticus</i>)
Golden Ragwort	(<i>Senecio aureus</i>)	Wild Oats[†]	(<i>Avena fatua</i>)
Lambsquarters	(<i>Chenopodium album</i>)		
Liverwort [*]	(<i>Marchantia</i> spp.)		
Niruri[†]	(<i>Phyllanthus niruri</i>)		
Pennsylvania Smartweed	(<i>Polygonum</i> <i>pensylvanicum</i>)		
Petty Spurge	(<i>Euphorbia peplus</i>)		
Prostate Spurge [*]	(<i>Euphorbia supina</i>)		
Redroot Pigweed	(<i>Amaranthus retroflexus</i>)		
Shepherdspurse[†]	(<i>Capsella bursa-pastoris</i>)		
Sensitive Plant[†]	(<i>Mimosa pudica</i>)		
Sow Thistle	(<i>Sonchus oleraceus</i>)		
Speedwell	(<i>Veronica</i> spp.)		
Spiny Amaranth[†]	(<i>Amaranthus spinosus</i>)		
Spotted Catsear	(<i>Hypochaeris radicata</i>)		
Swinecress [*]	(<i>Coronopus didymus</i>)		
Yellow Woodsorrell	(<i>Oxalis stricta</i>)		

[†Not for use in California]

[* Suppression]

(Note: Spreader Section is optional)

[SPREADER SETTINGS] / [COVERAGE INFORMATION]

[50 lb will cover up to 10,893 sq. ft.]

		Application Rates		
		[4.5 lb/1,000 sq. ft. = 200 lb/A (= 2.0 lb ai/A) Covers: 10,893 sq. ft.]	[6.76 lb/1,000 sq. ft. = 300 lb/A (= 3.0 lb ai/A) Covers: 7,267 sq. ft.]	[9 lb/1,000 sq. ft. = 400 lb/A (= 4.0 lb ai/A) Covers: 5,446 sq. ft.]
[Spreader Name]	[Amount of Product]	[Spreader Settings]		
[Spyker 288 Super]	[XX]	[XX]	[XX]	[XX]
[Lesco Rotary (Model 021820)]				

Note to PM:

Bold, italicized text is for the reader and is not a part of the label.

[Bracketed information is optional] Text separated by / denotes and/or options

[Scott's ProTurf R8A-1]				
[Lesco 36" Drop Spreader]				
[Lely HR Three Point Hitch Single Disc Broadcaster]				
[Vicon Super Flow PS 203]				

"X" will be replaced with correct value on final label.

TOLERANT SPECIES OF ORNAMENTALS AND GROUND COVERS

Fertilizer with RONSTAR® 1.0 may be applied to established ornamental plants (including plants grown for ground covers) and ground cover plants in containers, nurseries, and landscape plantings. This product may be applied on the following ornamental varieties.

ESTABLISHED ORNAMENTALS AND GROUND COVERS			
COMMON NAME	SCIENTIFIC NAME	COMMON NAME	SCIENTIFIC NAME
Abutilon	<i>Abutilon pictum</i>	Citrus, Ornamental*	
Acacia	<i>Acacia</i> spp.	Grapefruit	<i>Citrus paradisi</i>
Agapanthus	<i>Agapanthus africanus</i>	Lemon	<i>Citrus limon</i>
Allamanda, Common	<i>Allamanda cathartica</i>	Lime	<i>Citrus aurantifolia</i> Bearss
Alpine Willow	<i>Epilobium fleischeri</i>	Mandarin	<i>Citrus reticulata</i>
Andromeda	<i>Pieris</i> spp.	Tangelo	<i>Citrus x Tangelo</i> Minneola
Anthuriums (Ozaki red)[†]		Tangerine	<i>Citrus reticulata</i> var. <i>tangerina</i>
Apache Plume	<i>Fallugia paradoxa</i>	Temple	<i>Citrus Xnobilis</i> Temple
Aralia	<i>Aralia spinosa</i>	Cuban Shaddock	<i>Citrus maxima</i>
Arborvitae	<i>Thuja</i> spp.	Valencia	<i>Citrus sinensis</i>
Ash, Green	<i>Fraxinus pennsylvanica</i>	Washington naval	<i>Citrus sinensis</i>
Azalea	<i>Rhododendron</i> spp.	Cleyera[†]	<i>Cleyera japonica</i>
Baby's Breath[†]	<i>Gypsophila paniculata</i>	Coreopsis[†]	<i>Coreopsis lanceolata</i>
Bald Cypress[†]	<i>Takodium distichum</i>	Coromandel[†]	<i>Asystasia gangetica</i>
Bamboo, Feathery	<i>Bambusa vulgaris</i>	Cotoneaster	<i>Cotoneaster</i> spp.
Banyan, Weeping	<i>Ficus benghalensis</i>	Crabapple[†]	<i>Malus</i> spp.
Barberry	<i>Berberis</i> spp.	Crapemyrtle	<i>Lagerstroemia indica</i>
Beafsteak plant	<i>Acalypha wilkesiana</i>	Creeping Phlox	<i>Phlox subulata</i>
Bearberry	<i>Arctostaphylos uva-ursi</i>	Chrysanthemum	<i>Chrysanthemum</i> spp.
Beech, European	<i>Fagus sylvatica</i>	Cypress	<i>Cupressus</i> spp.
Birch, Paper	<i>Betula papyrifera</i>	Cypress, Leyland	<i>Cupressocyparis leylandii</i>
Blanket Flower[†]	<i>Gaillardia aristata</i>	Dahlia[†]	<i>Dahlia</i> spp.
Blazing Star[†]	<i>Liatris spicata</i>	Daphne, Fragrant	<i>Daphne odora</i>
Boxwood, Japanese	<i>Buxus microphylla</i>	Deutzia, Slender	<i>Deutzia gracilis</i>
Boxwood, Common	<i>Buxus sempervirens</i>	Dieffenbachia[†]	<i>Dieffenbachia</i> spp.
Bougainvillea	<i>Bouganvillea</i>	Dogwood, Common	<i>Cornus florida</i>
Brassaia, Dwarf	<i>spectabilis</i>	Dogwood, Redosier	<i>Cornus stolonifera</i>
Buddleia	<i>Brassaia actinopylla</i>	Doxwood, Kousa	<i>Cornus kousa</i>
Bugleflower[†]	<i>Buddleia davidii</i>	Douglas Fir	<i>Pseudotsuga menziesii</i>
Callistemon	<i>Ajuga reptans</i>	Elm	<i>Ulmus</i> spp.
Camellia, Common	<i>Callistemon lanceolatus</i>	Escallonia	<i>Escallonia</i> spp.
Japanese	<i>Camellia japonica</i>	Eucalyptus	<i>Eucalyptus</i> spp.
Camellia, Sasanqua		Euryops, Gray Leaved	<i>Euryops pectinatus</i>
Candytuft	<i>Camellia sasanqua</i>	Euonymus, Spreading	<i>Euonymus kiautschovicus</i>
Carissa	<i>Iberis sempervirens</i>		

Note to PM:

Bold, italicized text is for the reader and is not a part of the label.

[Bracketed information is optional] Text separated by / denotes and/or options

Carnation	<i>Carissa macrocarpa</i>	Euonymus, Wintercreeper	<i>Euonymus fortunei</i>
Ceanothus	<i>Dianthus caryophyllus</i>	Falsecypress Hinoki	<i>Chaemaecyparis obtusa</i>
Cedar, Red	<i>Ceanothus americanus</i>	Falsecypress, Japanese	<i>Chaemaecyparis pisifera</i>
Cedar, Atlas	<i>Juniperus virginia</i>	Flowering Quince	<i>Chaenomeles speciosa</i>
Cistus	<i>Cedrus atlantica</i>	Forsythia	<i>Forsythia intermedia</i>
	<i>Cistus purpureus</i>	Fountain Grass	<i>Pennisetum alopecuriodes</i>
		Gardenia	<i>Gardenia jasminoides</i>
		Gazania, Trailing	<i>Gazania uniflora</i>
			<i>leucoleana</i>
		Ginko	<i>Ginko biloba</i>

*For use only on plants that will not bear edible fruit within one year of application of this product.

[†Not for use in California]

ESTABLISHED ORNAMENTALS AND GROUND COVERS (con't)			
COMMON NAME	SCIENTIFIC NAME	COMMON NAME	SCIENTIFIC NAME
Gladiolus[†]	<i>Gladiolus</i> spp.	Oak	<i>Quercus</i> spp.
Golden Raintree[†]	<i>Koelreuteria paniculata</i>	Ochana	<i>Ochana serrulata</i>
Heath, Spring	<i>Erica carnea</i>	Ohai	<i>Samanea saman</i>
Heather, Scotch	<i>Calluna vulgaris</i>	Oleander	<i>Nerium oleander</i>
Heliotropium	<i>Heliotropium arborescens</i>	Orthosiphon	<i>Orthosiphon stamineus</i>
Hemlock, Canada[†]	<i>Tsuga canadensis</i>	Osmanthus	<i>Osmanthus heterophyllus</i>
Hibiscus	<i>Hibiscus</i> spp.	Pachysandra	<i>Pachysandra terminalis</i>
Honeysuckle	<i>Lonicera</i> spp.	Palm, Bamboo	<i>Rhapi excelsa</i>
Holly	<i>Ilex</i> spp.	Palm, Fishtail	<i>Caryota</i> spp.
Ice Plant	<i>Carpobrotus edule</i>	Palm, Licuala	<i>Licuala Thunb</i> spp.
Ilima	<i>Sida fallax</i>	Palm, Macarthur	<i>Ptychosperma marcarthurii</i>
Ivy, Algerian	<i>Hedera canariensis</i>	Palm, Manac	<i>Euterpe</i> spp.
Ivy, English	<i>Hedera helix</i>	Palm, Manila	<i>Veitchia merillii</i>
Jasmine, Orange	<i>Murraya paniculata</i>	Palm, Parlor	<i>Collinia elegans</i>
Jasmine, Primrose	<i>Jasminum mesnyi</i>	Palm, Rattan	<i>Daemonorops</i> spp.
Jasmine, Star	<i>Trachelospermum</i> <i>jasminoides</i>	Palm, Sealing Wax	<i>Cyrtostachys lakka</i>
Jasmine, Showy	<i>Jasminum floridum</i>	Palm, Sugar	<i>Arenga saccharifera</i>
Juniper	<i>Juniperus</i> spp.	Paperbark Tree[†]	<i>Melaleuca leucadendra</i>
Justica	<i>Justica brandegeana</i>	Peony[†]	<i>Paeonia</i> spp.
Kwanzan Cherry[†]	<i>Prunus serrulata</i>	Periwinkle, Common	<i>Vinca minor</i>
Lamb's Ear[†]	<i>Stachys byzantina</i>	Periwinkle, Large	<i>Vinca major</i>
Lantana Trailing	<i>Lantana montevidensis</i>	Photinia, Frasier's	<i>Photinia fraseri</i>
Lapalapa	<i>Cheirodendron</i> spp.	Poinciana	<i>Delonix regia</i>
Larch, European	<i>Larix decidua</i>	Pine	<i>Pinus</i> spp.
Laurel, English	<i>Prunus laurocerasus</i>	Pittosporum, Japanese	<i>Pittosporum tobira</i>
Leopards – Bane[†]	<i>Doronicum cordatum</i>	Plum, Natal	<i>Carissa macrocarpa</i>
Leucothoe, Coast	<i>Leucothoe axillaries</i>	Podocarpus, Yew	<i>Podocarpus macrophylla</i>
Leucothoe, Drooping	<i>Leucothoe fontanesiana</i> (<i>catesbaei</i>)	Pomegranate*	<i>Punica granatum</i>
Lily of the Nile	<i>Agapanthus umbellatus</i>	Poplar	<i>Populus</i> spp.
Lilac	<i>Syringa</i> spp.	Potentilla	<i>Potentilla fruitcosa</i>
Littleleaf Linden[†]	<i>Tilia cordata</i>	Potentilla	<i>Potentilla fragiformis</i>
Little Pickles	<i>Othonna capensis</i>	Privet	<i>Ligustrum</i> spp.
Loquat*	<i>Eriobotrya japonica</i>	Protea species	<i>Banksia menziesii</i>
Magnolia	<i>Magnolia</i> spp.		<i>Leucadendron discolor</i>
Mahonia, Grape Holly	<i>Mahonia aquifolium</i>		<i>Leucospermum cordifolium</i>
			<i>Protea exinia</i>
		Pyracantha	<i>Pyracantha coccinea</i>

Note to PM:

Bold, italicized text is for the reader and is not a part of the label.

[Bracketed information is optional] Text separated by / denotes and/or options

Maple	<i>Acer</i> spp.	Raphiolepis	<i>Raphiolepis umbellata</i>
Metallic Plant	<i>Hemigraphis colorata</i>	Redwood, Dawn	<i>Metasequoia glyptostroboides</i>
Mexican Orange[†]	<i>Choisya ternate</i>	Rhododendron	<i>Rhododendron</i> spp.
Mock Orange[†]	<i>Philadelphus virginialis</i>	Rose	<i>Rosa</i> spp.
Money Tree	<i>Pleomele marginata</i>	Russian Olive	<i>Eleagnus Angustifolia</i>
Murraea	<i>Murraea exotica</i>	Sargent Cherry[†]	<i>Prunus sargentii</i>
Murraea	<i>Murraea paniculata</i>		
Myoporum	<i>Myoporum laetum</i>		
Myrtle	<i>Myrtus communis</i>		
Nandina	<i>Nandina domestica</i>		

*For use only on plants that will not bear edible fruit within one year of application of this product.

[†Not for use in California]

ESTABLISHED ORNAMENTALS AND GROUND COVERS (con't)		
COMMON NAME	SCIENTIFIC NAME	
Scotch Broom	<i>Cytisus scoparius</i>	
Sedum	<i>Sedum album</i>	
Serviceberry, Saskatoon*[†]	<i>Amelancheir alnifolia</i>	
Silver Butterfly Bush	<i>Buddleia altemifolia</i>	
Smith Buckhorn	<i>Rahmnus smithii</i>	
Speedwell	<i>Veronica spicata</i>	
Spruce	<i>Picea</i> spp.	
Statice[†]	<i>Limonium</i> spp.	
St.Johnswort, Golden	<i>Hypericum frondosum</i>	
St.Johnswort, Goldencup	<i>Hypericum patulum</i>	
Strawberry Tree	<i>Arbutus unedo</i>	
Sumac, Staghorn	<i>Rhus typhina</i>	
Sweet William[†]	<i>Dianthus barbatus</i>	
Syzygium	<i>Syzygium paniculatum</i>	
Trailing African Daisy	<i>Osteospermum fruticosum</i>	
Viburnum	<i>Viburnum</i> spp.	
Wedelia	<i>Wedelia trilobata</i>	
Wisteria, Chinese[†]	<i>Wisteria synensis</i>	
Witchhazel, Common[†]	<i>Hamamelis virginiana</i>	
Woadwaxen, Common[†]	<i>Genista tinctoria</i>	
Wooly Thyme	<i>Thymus pseudolanugiosis</i>	
Xylosma	<i>Xylosma congestum</i>	
Yellow Foxgolve	<i>Digitalis x mertonensis</i>	
Yew	<i>Taxus</i> spp.	

*For use only on plants that will not bear edible fruit within one year of application of this product.

[†Not for use in California]

Note to PM:

Bold, italicized text is for the reader and is not a part of the label.

[Bracketed information is optional] Text separated by / denotes and/or options

NEWLY TRANSPLANTED ORNAMENTALS AND GROUND COVERS			
COMMON NAME	SCIENTIFIC NAME	COMMON NAME	SCIENTIFIC NAME
Blanket Flower[†]	<i>Gaillardia aristata</i>	Oak	<i>Quercus</i> spp.
Brassaia, Dwarf	<i>Brassia actinophylla</i>	Periwinkle, Common	<i>Vinca minor</i>
Camellia	<i>Camellia japonica</i>	Periwinkle, Large	<i>Vinca major</i>
Carnation	<i>Diianthus caryophyllus</i>	Pine	<i>Pinus</i> spp.
Cedar, Red	<i>Juniperus atlantica</i>	Poplar	<i>Populus</i> spp.
Coromandel[†]	<i>Asystasia gangentica</i>	Privet	<i>Ligustrum</i> spp.
Dogwood, Flowering	<i>Cornus florida</i>	Protea Species	<i>Banksia menzesii</i>
Elm	<i>Ulmus</i> spp.		<i>Leucadendron discolor</i>
Forsythia	<i>Forsythia intermedia</i>		<i>Leucospermum cordifolium</i>
Gazania, Trailing	<i>Gazania uniflora leucoleana</i>		<i>Protea exinia</i>
Hackberry[†]	<i>Celtis occidentalis</i>	Rhododendron	<i>Rhododendrun</i> spp.
Ivy, Algerian	<i>Hedera canariensis</i>	Russian Olive	<i>Eleagnus angustifolia</i>
Ivy, English	<i>Hedera helix</i>	Spruce	<i>Picea</i> spp.
Hemlock, Canada	<i>Tsuga canadensis</i>	Trailing African Daisy	<i>Osteospermum fruticosum</i>
Holly	<i>Ilex</i> spp.	Wedelia	<i>Wedelia trilobata</i>
Ice Plant	<i>Carpobrotus edule</i>	Wisteria, Chinese[†]	<i>Wisteria synensis</i>
Juniper	<i>Juniperus</i> spp.	Yew[†]	<i>Taxus</i> spp.
Leopards – Bane[†]	<i>Doronicum cordatum</i>		
Metallic Plant	<i>Hemigraphis colorata</i>		

[† Not for use in California]

FOREST NURSERY APPLICATION

Seedlings of the following species may be treated with Fertilizer with RONSTAR 1.0 at least 4 weeks after seedling emergence:

COMMON NAME	SCIENTIFIC NAME
Pine, Eastern White	<i>Pinus strobus</i>
Pine, Loblolly	<i>Pinus teada</i>
Pine, Slash	<i>Pinus caribaea</i>

Note to PM:

Bold, italicized text is for the reader and is not a part of the label.

[Bracketed information is optional] Text separated by / denotes and/or options

SENSITIVE VARIETIES OF ORNAMENTALS

Under certain growing conditions, the plant varieties listed below may be sensitive to Fertilizer with RONSTAR 1.0. Evaluate usage on a small scale prior to large scale applications.

<u>PLANT SPECIES</u>	<u>VARIETIES</u>
<i>Andromeda</i> (<i>Pieris japonica</i>)	Snowdrift, Temple Bell
<i>Azalea</i> (<i>Rhododendron</i> spp.)	Pink Champagne, Hershey, Leuchtenfuer, Memoire John Hearrens, Hino-Crimson, White Grandeur, Everest, Girard, Roberta
<i>Cotoneaster</i> (<i>Cotoneaster</i> spp.)	Eichholz, Himalayan, Shangri-la
<i>Crapemyrtle</i> (<i>Lagerstroemia indica</i>)	Petite Red Imp, Seminole Bush
<i>Heath, Spring</i> (<i>Erica carnea</i>)	Mediterranean Pink
<i>Hemlock, Canada</i> (<i>Tsuga canadensis</i>)	Pendula
<i>Hibiscus</i> (<i>Hibiscus syriacus</i>)	Red Heart
<i>Rhododendron</i> (<i>Rhododendron</i> spp.)	Daphnoides, Nova Zembla, Catawba Album
<i>Spruce, Norway</i> (<i>Picea abies</i>)	Pumila
<i>Spruce, White</i> (<i>Picea glauca</i>)	Densata
<i>Viburnum</i> (<i>Viburnum</i> spp.)	Davidii

STORAGE AND DISPOSAL

PESTICIDE STORAGE

Do not contaminate water, food or feed by storage or disposal.

PESTICIDE DISPOSAL

Wastes resulting from the use of this product may be disposed of on site or at an approved waste disposal facility.

CONTAINER HANDLING

For 50, 1000, 2000-pound bags and totes:

Non-refillable container. Do not reuse or refill this container. Completely empty container into application equipment. Then dispose of empty container in a sanitary land fill or by incineration, or, if allowed by State and local authorities, by burning. If burned, stay out of smoke.

For Killebrews and other bulk transport vehicles:

Refillable container: Container handling instructions are not required. Cleaning before refilling is the responsibility of the refiller.

Note to PM:

Bold, italicized text is for the reader and is not a part of the label.

[Bracketed information is optional] Text separated by / denotes and/or options

(End Directions for Use)

[Fertilizer With Ronstar 1.0]

Guaranteed [Fertilizer] Analysis [N-P-K]

Total Nitrogen (N).....XX%

XX % Ammoniacal Nitrogen

XX % Urea Nitrogen*

Available Phosphate(P₂O₅).....XX%

Soluble Potash (K₂O).....XX%

Derived from: Polymer-Coated Urea, Urea, Ammonium Phosphate, and Muriate of Potash.

*X% Slowly Available/Slow Release/Controlled release nitrogen from polymer-coated urea.

[Information regarding the contents and levels of metals in this product is available on the internet at <http://www.aapfco/metals.org>]

F-352 (***Florida Fertilizer License Number***)

[Fertilizer] [Density] [Bulk Density]

[Any other state specific fertilizer required language]

Note to PM : Appropriate fertilizer specific information will be inserted on Final Printed Label to replace "X".

IMPORTANT: READ BEFORE USE

Read the entire Directions for Use, Conditions, Disclaimer of Warranties and Limitations of Liability before using this product. If terms are not acceptable, return the unopened product container at once.

By using this product, user or buyer accepts the following Conditions, Disclaimer of Warranties and Limitations of Liability.

CONDITIONS: The directions for use of this product are believed to be adequate and must be followed carefully. However, it is impossible to eliminate all risks associated with the use of this product. Crop injury, ineffectiveness or other unintended consequences may result because of such factors as weather conditions, presence of other materials, or the manner of use or application, all of which are beyond the control of Harrell's LLC. All such risks shall be assumed by the user or buyer.

DISCLAIMER OF WARRANTIES: TO THE EXTENT CONSISTENT WITH APPLICABLE LAW, HARRELL'S LLC MAKES NO OTHER WARRANTIES, EXPRESS OR IMPLIED, OF MERCHANTABILITY OR OF FITNESS FOR A PARTICULAR PURPOSE OR OTHERWISE, THAT EXTEND BEYOND THE STATEMENTS MADE ON THIS LABEL. No agent of Harrell's LLC is authorized to make any warranties beyond those contained herein or to modify the warranties contained herein. TO THE EXTENT CONSISTENT WITH APPLICABLE LAW, HARRELL'S LLC DISCLAIMS ANY LIABILITY WHATSOEVER FOR SPECIAL, INCIDENTAL OR CONSEQUENTIAL DAMAGES RESULTING FROM THE USE OR HANDLING OF THIS PRODUCT.

Note to PM:

Bold, italicized text is for the reader and is not a part of the label.

[Bracketed information is optional] Text separated by / denotes and/or options

LIMITATIONS OF LIABILITY: TO THE EXTENT CONSISTENT WITH APPLICABLE LAW, THE EXCLUSIVE REMEDY OF THE USER OR BUYER FOR ANY AND ALL LOSSES, INJURIES OR DAMAGES RESULTING FROM THE USE OR HANDLING OF THIS PRODUCT, WHETHER IN CONTRACT, WARRANTY, TORT, NEGLIGENCE, STRICT LIABILITY OR OTHERWISE, SHALL NOT EXCEED THE PURCHASE PRICE PAID, OR AT HARRELL'S LLC'S ELECTION, THE REPLACEMENT OF PRODUCT.

NET WEIGHT: 50 lb, 1,000 lb, 2,000 lb; or BULK TRAILER

Manufactured By/Manufactured For/Sold By/ and Guaranteed By:

Harrell's, LLC

PO Box 807

Lakeland, FL 33802

RONSTAR® is a registered trademark of the Bayer

Growing a Better World® is a registered trademark of Harrell's, LLC

Optional State Fertilizer Restriction Statements

(Note to PM: Fertilizer composition of products distributed in states with nitrogen and phosphorus fertilizer application restrictions will be formulated to contain percentages of nutrients that meet state fertilizer restrictions when applied according to the application rates for the active ingredient as specified in the Directions for Use.)

Appropriate statement to be inserted in the Application Restrictions Section of Label as necessary for State specific fertilizer restriction language regarding application of nitrogen and phosphorus. Some example statements are, but not limited to:

[["In MD, NH, NJ, VA: Application rates of soluble nitrogen are not to exceed 0.7 lb. soluble N/1000 sq.ft/application."]]

[And/Or]: [In NH, NJ, VA: Application of a product containing phosphorus to turf is limited to establishing turf in the first growing season."]

[And/Or]: "Florida specific requirements for fertilizer use. For applications to Sports Turf, Golf Courses, Parks and Athletic Fields: **DO NOT** exceed fertilizer rates specified in the document titled SL 191, "Recommendations for N,P,K and Mg for Golf Course and Athletic Field Fertilization based on Mehlich III Extractant."

[And/Or: Other state specific fertilizer language that may be required.]

[For Fertilizer Mixtures Containing Nitrogen]: [It is a violation of law in [Maryland][New Jersey][New Hampshire][list state(s)] to apply this product to turf at a rate that results in greater than 0.7 lb per 1,000 sq.ft. of readily available nitrogen, or more than 0.9 lb per 1,000 sq.ft. of total nitrogen, with a least 20% of

Note to PM:

Bold, italicized text is for the reader and is not a part of the label.

[Bracketed information is optional] Text separated by / denotes and/or options

which shall consist of slow release nitrogen, per application. Additional restrictions apply to total nitrogen applied to turf per season.]

[Products sold in Florida: The following statement shall be placed in the Directions for Use section (see that section above in label): [Apply only to actively growing turf. **DO NOT** apply near water, storm drains, or drainage ditches. **DO NOT** apply if heavy rain is expected. Apply this product only to your lawn, and sweep any product that lands in the driveway, sidewalk, or street, back onto your lawn. Check with your local Cooperative Extension Agency to obtain specific information on local turf best management practices. Check with your county or city government to determine if there are local regulations for fertilizer use.]

[Virginia applications: [Apply no more than 0.7 lb per 1,000 sq. ft. of readily available nitrogen during any given 30-day period. Apply no more than 0.9 lb (cool season grasses) or 1.0 lb (warm season grasses) per 1,000 sq. ft. of total nitrogen, with at least 20% of which shall consist of slow release nitrogen, during any given 30-day period.]

[For Fertilizer Mixtures Containing Phosphorus]:

[For starter lawns in MD]: [In Maryland, a soil test is not required for a new lawn. Apply either 2 lbs. of phosphorus per 1,000 sq. ft. initially or apply 1 lb. of phosphorus per 1,000 sq. ft. twice during the starter year. On established turf, this product must be used in accordance with a soil test that was conducted by a laboratory identified under § 8-803.7 of the Agriculture Article, Annotated Code of Maryland, performed no more than 3 years before the application.] [Other state and local restrictions may apply]

[In Maryland] [For levels of phosphorus above 5%]: [This fertilizer contains phosphorus and may not be used on turf in the state of Maryland except when (1) providing nutrients to specific soils and target vegetation as determined to be necessary in accordance with a soil test that was conducted by a laboratory identified under §8-803.7 of the Agriculture Article, Annotated Code of Maryland, performed no more than 3 years before the application; (2) establishing vegetation for the first time, including after land disturbance, provided the application is conducted in accordance with the specified application rates established by the State; or (3) reestablishing or repairing a turf area. Not for use on established lawns or grass in Maryland.]

[For all %'s of phosphorus-containing fertilizers in VA]:

[Virginia Applications]: [This lawn/turf fertilizer contains phosphorous and is only for nonagricultural use on (i) turf during its first growing season, (ii) on turf areas being repaired or renovated, and (iii) on turf where a soil test performed within the last 3 years indicates a phosphorous deficiency. This fertilizer is not for the routine maintenance of turf.]

[Virginia & Maryland]: [When applied as directed, [we]/[Harrell's] guarantees the [controlled release]/[slow release]/[polymer-coated]/[Enhanced Efficiency] nitrogen fertilizer in this product will release at a rate not to exceed 0.7 lb. N/1,000 sq. ft./month.]

[Maryland Applications] [**DO NOT** apply near water storm drains or drainage ditches. **DO NOT** apply if heavy rain is expected. Apply this product only to your lawn, and sweep any product that lands on the driveway, sidewalk, or street back onto your [lawn and garden].]

Note to PM:

Bold, italicized text is for the reader and is not a part of the label.

[Bracketed information is optional] Text separated by / denotes and/or options

OPTIONAL MARKETING CLAIMS AND LOGO'S

(Note: The following logos and/or claims may or may not be used on the FPL)

Company Specific Information

(Harrell's Corporate Logo)



Growing a Better World is a registered trademark of Harrell's, LLC

Harrell's PROFertilizer® is a registered trademark of Harrell's, LLC

(Harrell's "H" Logo)



Contact us/ For more information

[call] 800.282.8007

Harrell's label identifier format: [EPA Reg No.Product Name.label revision date (yyyymmdd)]

FERTILIZER CLAIMS

Contains/Formulated with/ Harrell's PROFertilizer

Fertilizer with Ronstar 1.0 is part of the Harrell's PROFertilizer portfolio/line/family of products

Contains Polyon® Slow release/controlled release/slowly available nitrogen/phosphate/potassium/fertilizer

Polyon® Turf Fertilizer

Polyon® Polymer Coated Fertilizer

Polyon® [ST]/[short term] [Slow]/[Controlled]- release fertilizer]

Polyon® [ST] – Distributed exclusively by Harrell's, LLC

Polyon® [ST]/[short term] [Slow]/[Controlled]- release fertilizer]

Polyon® [ST] – Distributed exclusively by Harrell's

[Powered by] Polyon® [Slow]/[Controlled]-Release Fertilizer

Polyon® is a registered trademark of Koch Agronomic Services

Note to PM:

Bold, italicized text is for the reader and is not a part of the label.

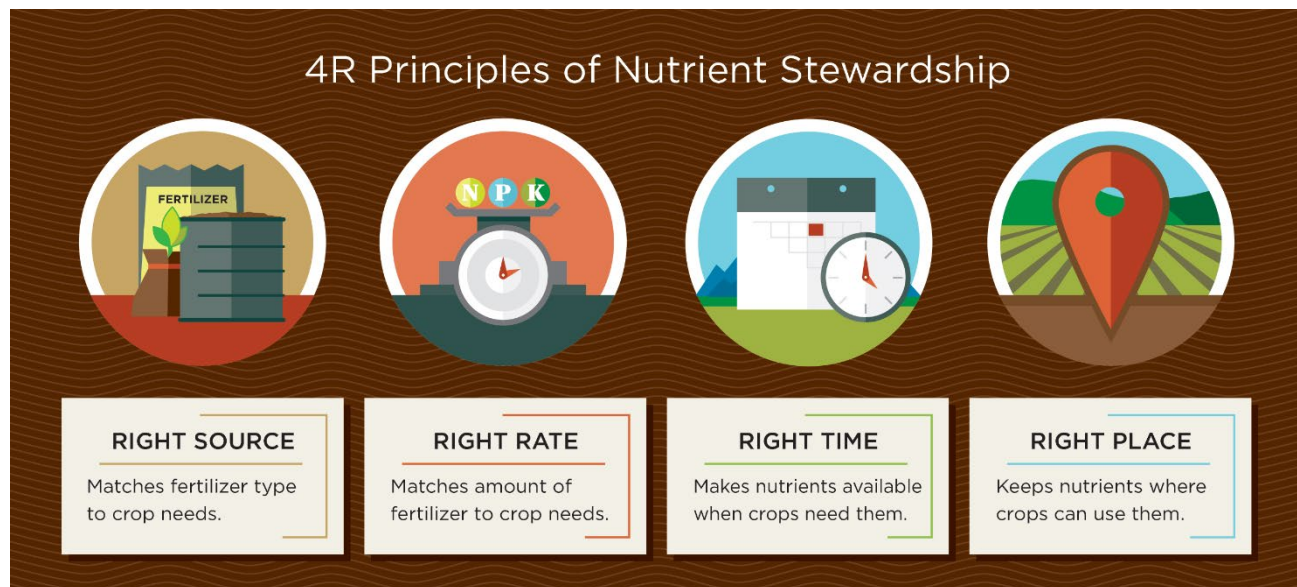
[Bracketed information is optional] Text separated by / denotes and/or options

Polygon® feeds/releases for up to X weeks/months at X° F

(note to PM: release time and temperature is based on the coating thickness of the polymer coated fertilizer used in the blend and inserted for the appropriate product – this information is being required by fertilizer control officials in some states)

Notice: [Fertilizer] may cause staining on concrete [hard surfaces]. Sweep or blow, do not wash, fertilizer granules onto treatment area.

Nutrient Stewardship graphic depicted below. This is a TFI (The Fertilizer Institute) sponsored program. Graphic provided by TFI.



Or

