



## OFFICE OF CHEMICAL SAFETY AND POLLUTION PREVENTION

WASHINGTON, D.C. 20460

May 7, 2024

Brad Glenn  
Director of Regulatory Affairs  
Harrell's LLC  
5105 New Tampa Highway  
Lakeland, FL 33815

Subject: Label Amendment - Registration Review Mitigation for Oxadiazon  
Product Name: Turf Fertilizer with Ronstar 1.20  
EPA Registration Number: 52287-14  
Application Date: June 27, 2022  
Decision Number: 585514

Dear Brad Glenn:

The Agency, in accordance with the Federal Insecticide, Fungicide, and Rodenticide Act (FIFRA), as amended, has completed reviewing all the information submitted with your application to support the Registration Review of the above referenced product in connection with the Oxadiazon Interim Decision, and has concluded that your submission is acceptable. The label referred to above, submitted in connection with registration under FIFRA, as amended, is acceptable. As part of the registration review, EPA identified the need for this product to be classified as Restricted Use. The labeling approved today incorporates the necessary changes for classification as Restricted Use, therefore the classification is effective on the date of this letter.

Should you wish to add/retain a reference to the company's website on your label, then please be aware that the website becomes labeling under the Federal Insecticide, Fungicide, and Rodenticide Act and is subject to review by the Agency. If the website is false or misleading, the product would be misbranded and unlawful to sell or distribute under FIFRA section 12(a)(1)(E). 40 CFR 156.10(a)(5) list examples of statements EPA may consider false or misleading. In addition, regardless of whether a website is referenced on your product's label, claims made on the website may not substantially differ from those claims approved through the registration process. Therefore, should the Agency find or if it is brought to our attention that a website contains false or misleading statements or claims substantially differing from the EPA approved

registration, the website will be referred to the EPA's Office of Enforcement and Compliance Assurance.

A stamped copy of your labeling is enclosed for your records. This labeling supersedes all previously accepted labeling and must be used at your next label printing. You must submit one copy of the final printed labeling before you release the product for shipment with the new labeling. Due to the classification of this product as Restricted Use, in accordance with 40 CFR 152.167, after 120 days, any of this product you sell or distribute must:

- 1) Bear an approved amended label containing the terms of the Restricted Use classification;
- 2) Bear a sticker containing the product name, EPA registration number, and any terms of restricted use; **or**
- 3) Be accompanied by supplemental labeling bearing the product name, EPA registration numbers, and any terms of restricted use.

After 270 days, any of this product you sell or distribute must bear the approved amended labeling. "To distribute or sell" is defined under FIFRA section 2(gg) and its implementing regulation at 40 CFR 152.3.

If you have any questions about this letter, please contact Theodore Varns by phone at 202-566-2241, or via email at [varns.theodore@epa.gov](mailto:varns.theodore@epa.gov).

Sincerely,



Kevin Costello, Branch Chief  
Risk Management and Implementation Branch 2  
Pesticide Re-Evaluation Division  
Office of Pesticide Programs

ENCLOSURE: Stamped label

Note to PM:

***Bold, italicized text is for the reader and is not a part of the label.***

[Bracketed information is optional] Text separated by / denotes and/or options

<b>ACCEPTED</b>
May 07, 2024
<small>Under the Federal Insecticide, Fungicide and Rodenticide Act as amended, for the pesticide registered under EPA Reg. No. 52287-14</small>

**RESTRICTED USE PESTICIDE**

**Due to potential human health risks of concern (cancer) from chronic dietary or dermal exposure when used in accordance with label directions.**

FOR RETAIL SALE TO AND USE ONLY BY CERTIFIED APPLICATORS OR PERSONS UNDER THEIR DIRECT SUPERVISION AND ONLY THOSE USES COVERED BY THE CERTIFIED APPLICATOR'S CERTIFICATION.



OXADIAZON	GROUP	<b>14</b>	HERBICIDE
-----------	-------	-----------	-----------

**TURF FERTILIZER WITH RONSTAR® 1.2**

[Alternate Brand Names: Fertilizer W/ Ronstar® 1.2%; Fertilizer W/ Ronstar® 1.2; Harrell's PROtect Professional Fertilizer plus Ronstar® 1.2; Turf & Ornamental Fertilizer W/ Ronstar® 1.2; Landscape & Ornamental Fertilizer W/ Ronstar® 1.2; Fertilizer W/ Oxadiazon 1.2]

[Batch Number] [SKU Number] [Fertilizer N-P-K] [Bulk] [Density] [xx lbs. per cu. ft]

**SELECTIVE PREEMERGENT HERBICIDE for the control of annual grasses and broadleaf weeds. For use only on turf, ornamentals, nursery trees, rights-of-way, and landscape plantings. Not for use on turfgrass on residential properties.**

**ACTIVE INGREDIENT:**

Oxadiazon .....1.2%

**OTHER INGREDIENTS:** .....98.8%

**TOTAL** .....100.00%

EPA Reg. No. 52287-14

EPA Est. No. 52287-FL-1

Net Weight: 50 lb. (22.7 kg), 1,000 lb. (453.4 kg), 2,000 lb. (907.2 kg), or bulk trailers

**KEEP OUT OF REACH OF CHILDREN**

**WARNING AVISO**

Si usted no entiende la etiqueta, busque a alguien para que se la explique a usted en detalle.  
(If you do not understand the label, find someone to explain it to you in detail.)

**READ THE ENTIRE LABEL BEFORE USING**

[See additional Precautionary Statements, First Aid, and Directions for Use inside label]

Note to PM:

***Bold, italicized text is for the reader and is not a part of the label.***

[Bracketed information is optional] Text separated by / denotes and/or options

## FIRST AID

If in eyes:	<ul style="list-style-type: none"><li>• Hold eyes open and rinse slowly and gently with water for 15-20 minutes. Remove contact lenses, if present, after the first 5 minutes, then continue rinsing.</li><li>• Call a poison control center or doctor for treatment advice.</li></ul>
If on skin:	<ul style="list-style-type: none"><li>• Take off contaminated clothing.</li><li>• Rinse skin immediately with plenty of water for 15-20 minutes.</li><li>• Call a poison control center or doctor for treatment advice.</li></ul>
If inhaled:	<ul style="list-style-type: none"><li>• Move person to fresh air.</li><li>• If person is not breathing, call 911 or an ambulance, then give artificial respiration, preferably mouth-to-mouth if possible.</li><li>• Call a poison control center or doctor for further treatment advice.</li></ul>
If swallowed:	<ul style="list-style-type: none"><li>• Call a poison control center or doctor immediately for treatment advice.</li><li>• Have person sip a glass of water if able to swallow.</li><li>• Do not induce vomiting unless told to do so by a poison control center or doctor.</li><li>• Do not give anything by mouth to an unconscious person.</li></ul>
Have the product container or label with you when calling a poison control center or doctor or going for treatment.	

---

For **MEDICAL** Emergencies Call 24 Hours a Day: 1-800-304-0824

For **TRANSPORTATION** Emergencies Call 24 Hours a Day 1-800-424-9300

For **PRODUCT USE** information Call 1-800-282-8007

---

## PRECAUTIONARY STATEMENTS

### HAZARDS TO HUMANS AND DOMESTIC ANIMALS

#### WARNING

Causes substantial but temporary eye injury. Harmful if absorbed through skin or inhaled. Do not get in eyes or on clothing. Avoid contact with skin.

### PERSONAL PROTECTIVE EQUIPMENT (PPE)

Loaders, applicators and other handlers must wear coveralls over short-sleeved shirt and short pants, waterproof gloves, chemical resistant footwear plus socks, protective eyewear, chemical-resistant headgear for overhead exposure, chemical resistant apron when cleaning equipment. Follow manufacturer's instructions for cleaning/maintaining PPE. If no such instructions for washables, use detergent and hot water. Keep and wash PPE separately from other laundry.

### User Safety Recommendations

#### Users should:

- Wash hands before eating, drinking, chewing gum, using tobacco, or using the toilet.
- Remove clothing immediately if pesticide gets inside, then wash thoroughly and put on clean clothing.
- Remove PPE immediately after handling this product. Wash the outside of gloves before removing. As soon as possible, wash thoroughly and change into clean clothing.

Note to PM:

***Bold, italicized text is for the reader and is not a part of the label.***

[Bracketed information is optional] Text separated by / denotes and/or options

## ENVIRONMENTAL HAZARDS

This pesticide is toxic to oysters, and shrimp. Runoff may be hazardous to aquatic organisms in water adjacent to treated areas. [Turf Fertilizer with RONSTAR® 1.2] / [This product] should not be used in areas where irrigation or rainfall results in the direct or indirect (via ditches and canals) contamination of surface waters through dissolved runoff or erosion of soil particles to which oxadiazon is absorbed.

For terrestrial uses: Do not apply directly to water, or to areas where surface water is present, or to intertidal areas below the mean high water mark. Do not contaminate water when disposing of equipment washwater or rinsate.

### Ground Water Advisory

This chemical has properties and characteristics associated with chemicals detected in groundwater. This chemical may leach into groundwater if used in areas where soils are permeable, particularly where the water table is shallow.

### Surface Water Advisory

This product may impact surface water quality due to rainwater. This is especially true for poorly draining soils and soils with shallow groundwater. This product is classified as having high potential for reaching surface water via runoff for several months or more after application. A level well-maintained vegetative buffer strip between areas to which this product is applied and surface water features such as ponds, streams, and springs will reduce the potential loading of oxadiazon from runoff water and sediment.

NON-TARGET ORGANISM ADVISORY: This product is toxic to plants and may adversely impact the forage and habit of non-target organisms, including pollinators, in areas adjacent to the treated site. Protect the forage and habitat of non-target organisms by following label directions intended to minimize drift.

## DIRECTIONS FOR USE

Restricted Use Pesticide

**It is a violation of Federal law to use this product in a manner inconsistent with its labeling.**

Do not apply this product in a way that will contact workers or other persons, either directly or through drift. Only protected handlers may be in the area during application. For any requirements specific to your State or Tribe, consult the agency responsible for pesticide regulation.

### AGRICULTURAL USE REQUIREMENTS

Use this product only in accordance with its labeling and the Worker Protection Standard, 40 CFR Part 170. This standard contains requirements for the protection of agricultural workers on farms, forests, nurseries, and greenhouses and handlers of agricultural pesticides. It contains requirements for training, decontamination, notification, and emergency assistance. It also contains specific instructions and exceptions pertaining to the statements on this label about personal protective equipment (PPE), notification to workers, and restricted-entry intervals. The requirements in this box only apply to uses of this product that are covered by the Worker Protection Standard (sod farm, commercial nurseries).

Note to PM:

***Bold, italicized text is for the reader and is not a part of the label.***

[Bracketed information is optional] Text separated by / denotes and/or options

Do not enter or allow worker entry into the treated areas during the restricted entry interval (REI) of 12 hours.

PPE required for early entry to treated areas that is permitted under the Worker Protection Standard and that involves contact with anything that has been treated, such as plants, soil, or water is:

- Coveralls,
- Shoes plus socks, and
- Waterproof gloves

### **NON-AGRICULTURAL USE REQUIREMENTS**

The requirements of this box apply to uses of this product that are NOT within the scope of the Worker Protection Standard for agricultural pesticides (40 CFR part 170). The “WPS” applies when this product is used to produce agricultural plants on farms, forests, nurseries, or greenhouses.

Do not enter or allow others to enter treated areas until dusts have settled and the turfgrass or soil is dry after treatments are watered in.

### **WEED-RESISTANCE MANAGEMENT**

For resistance management, [Turf Fertilizer with Ronstar 1.2]/[this product] contains the active ingredient Oxadiazon, a Group 14 Herbicide as determined by the mode of action (MOA) classification system of the Weed Science Society of America. Any weed population may contain or develop plants naturally resistant to [Turf Fertilizer with Ronstar 1.2]/[this product] and other Group 14 herbicides. The resistant biotypes may dominate the weed population if these herbicides are used repeatedly in the same field. Appropriate resistance-management strategies should be followed. Continued effectiveness of this product depends on the successful implementation of a weed resistance management program.

To delay herbicide resistance users should take one or more of the following steps:

- Rotate the use of [Turf Fertilizer with Ronstar® 1.2]/[this product] and other Group 14 herbicides within a growing season sequence, or among growing seasons with different herbicide groups that control the same weeds in a field.
- Adopt an integrated weed-management program for herbicide use that includes:
  - Scouting and uses historical information related to herbicide use and crop rotation, and
  - Consideration of tillage (or other mechanical control methods), and
  - Cultural (e.g., higher crop seeding rates), and
  - Precision fertilizer application method and timing to favor the crop and not the weeds), and
  - Biological (weed-competitive crops or varieties) and other management practices.
- Scout fields prior to application to identify the weed species present and their growth stage to determine if the intended application will be effective.
- Scout fields after herbicide application to monitor weed populations for early signs of resistance development. Indicators of possible herbicide resistance include:
  - Failure to control a weed species normally controlled by the herbicide at the dose applied, especially if control is achieved on adjacent weeds, or
  - A spreading patch of non-controlled plants of a particular weed species or,

Note to PM:

***Bold, italicized text is for the reader and is not a part of the label.***

[Bracketed information is optional] Text separated by / denotes and/or options

- Surviving plants mixed with controlled individuals of the same species.
- If resistance is suspected, prevent weed seed production in the affected area by using an alternative herbicide from a different group or by a mechanical method such as hoeing or tillage. Prevent movement of resistant weed seeds to other fields by cleaning harvesting and tillage equipment when moving between fields and planting clean seed.
- If a weed pest population continues to progress after treatment with this product, discontinue use and switch to another management strategy or herbicide with a different mode of action, if available.
- Contact your local extension specialist or certified crop advisors for additional pesticide resistance-management and/or integrated weed-management recommendations for specific crops and weed biotypes.
- Report any incidence of local non-performance of this product against a particular weed species to your [Harrell's] [company] representative at (800) 282-8007, [and/or at <https://www.harrells.com>].

### **BEST MANAGEMENT PRACTICES**

Proactively develop and implement diversified weed control strategies to minimize selection for weed populations resistant to one or more herbicides. A diversified program may include the use of herbicides with different modes of action along with cultural, mechanical, and/or biological practices. Best management practices include the following:

- To the extent possible, use a diversified approach toward weed management. Whenever possible incorporate multiple weed-control practices such as mechanical cultivation, biological management practices, and crop rotation.
- Plant into weed-free fields and keep fields as weed-free as possible.
- Identify weeds present in the field through scouting and field history and understand their biology. The weed-control program should consider all the weeds present. Apply this herbicide at the correct timing and rate needed to control the most difficult weed in the field.
- Fields with difficult to control weeds should be rotated to crops that allow the use of herbicides with alternative modes of action (MOA) or different management practices.
- Difficult to control weeds may require sequential applications of herbicides with differing MOA's.
- Prevent field-to-field and within-field movement of weed seed or vegetative propagules. Thoroughly clean plant residues from equipment before leaving fields.
- To the extent possible do not allow weed escapes to produce seeds, roots or tubers. Manage weed seeds at harvest and post-harvest to prevent a buildup of the seed seedbank.
- If resistance is suspected, treat weed escapes with a herbicide with a different MOA than those in this product or use non-chemical methods to remove escapes.

### **PRODUCT INFORMATION**

[Turf Fertilizer with RONSTAR 1.2]/[This product] is a preemergent herbicide for control of many annual grasses and broadleaf weeds in turf and on a wide variety of woody ornamental shrubs, vines and trees. [Turf Fertilizer with RONSTAR 1.2]/[This product] controls weeds by killing the weed seedlings as they come in contact with the herbicide during germination. Apply [Turf Fertilizer with RONSTAR 1.2]/[this product] using a properly calibrated spreader for granular applications. Uniform application is essential for satisfactory control of listed weeds. Calibrate the spreader prior to use following the manufacturer's

Note to PM:

***Bold, italicized text is for the reader and is not a part of the label.***

[Bracketed information is optional] Text separated by / denotes and/or options

directions and check frequently during the application to be certain that the equipment is working properly. After application, user must thoroughly irrigate the site as soon as possible on the same day of application.

Turf Fertilizer with RONSTAR® 1.2 use on all sites:

- The minimum retreatment interval (RTI) between applications is 60 days.
- Total applications of oxadiazon of all physical forms must not exceed 6.0 lbs a.i./A/year if this product is used on the same site with liquid formulations.

## TURF

For use in established perennial Bluegrass, Bentgrass, Bermudagrass, Buffalograss, Perennial Ryegrass, St. Augustinegrass, Seashore Paspalum[\*], Tall Fescue, and Zoysia turf. It may be used for Parks, Golf Courses, Athletic Fields, Cemeteries, and all other ornamental and recreational turfgrass areas. Not for use on turfgrass on residential properties.

Rake turf area free of leaves, mowing if necessary, so granules reach soil surface. Measure area to be treated and uniformly apply required amount, using a fertilizer spreader. Cross-treating with one-half required amount in each direction will give best results. After application, user must thoroughly irrigate the site as soon as possible on the same day of application.

[**RETREATMENT INTERVAL:** Subsequent applications can be made 120 days after the previous treatment.]

[\*not for use in California]

## USE RESTRICTIONS:

- Not for use by homeowners/consumers.
- Do not use on turfgrass on residential properties.
- Do not use on desirable red fescue, bentgrass varieties, dichondra, or centipedegrass since damage will occur.
- Oxadiazon use on turf has a maximum single application rate of 3.0 lbs. a.i./A (250 lbs. of product/acre), and a maximum annual application rate of 6.0 lbs. a.i./A (500 lbs. of product/acre).
- **On golf course turf only:** In areas of heavy weed infestation only, the maximum single application rate is 4.0 pounds of active ingredient per acre (333 lbs. of product/acre), and the maximum annual application rate is 8.0 pounds of active ingredient per acre (667 lbs. of product/acre). No liquid applications of oxadiazon may be applied on areas of turf treated at this maximum application rate in the same year.
- **On golf course turf only:** total applications of oxadiazon of all physical forms are limited to 30% of the total managed turf area of a golf course per year. Applications may be made to any turf surface type, including fairways, tees, greens, roughs, non-playable turf surfaces, or other managed turf areas. This 30% limit may be applied to the same, or different turf areas from year to year.
- **On golf course turf and sod farms:** a minimum 10-foot-wide untreated vegetative buffer must be maintained between the treated area and any surface water features.
- For applications on non-agricultural turf (e.g., golf courses, parks, athletic fields) that follow a liquid application, Turf Fertilizer with RONSTAR® 1.2 must be applied 60 days or later after the liquid application. After applying this product, no liquid applications of oxadiazon are allowed within the same calendar year on the same area of turf.



Note to PM:

***Bold, italicized text is for the reader and is not a part of the label.***

[Bracketed information is optional] Text separated by / denotes and/or options

- For applications to non-agricultural turf (e.g., golf courses, parks, athletic fields), this product may not be applied prior to any liquid applications of oxadiazon within the same calendar year on the same area of turf.
- For St. Augustine grass and Bentgrass turf, do not exceed the rate of 250 pounds per acre (3 pounds a.i./A).
- Do not apply [Turf Fertilizer with RONSTAR® 1.2] / [this product] through any type of irrigation system.
- Do not apply to Bentgrass turf mowed at less than 3/8 inch.
- Do not apply to newly seeded areas. [Delay new seeding until 4 months after treatment.]
- Do not overseed fairways before 60 days after application of [Turf Fertilizer with Ronstar 1.2] / [this product] Do not use where *Poa trivialis* is present in overseed mix.
- Do not apply [Turf Fertilizer with Ronstar 1.2] / [this product] to putting greens or tees because of the varying cultural practices used.
- Do not apply to wet turf or under conditions in which granules will collect on leaves.
- ***(Note to PM: Optional State Nitrogen and Phosphorus Fertilizer Use Restrictions to be inserted as required. Example statements can be found under the Optional State Fertilizer Statements heading.)***

**USE PRECAUTIONS:**

[Turf Fertilizer with Ronstar 1.2]/[This product] may cause discoloration of Bentgrass, Bermudagrass and St. Augustinegrass. This discoloration is temporary and normally outgrown within 2 to 3 weeks.

**PREEMERGENT WEED CONTROL**

AMOUNT OF [TURF FERTILIZER WITH RONSTAR 1.2]/[This product]			
WEEDS CONTROLLED	PER ACRE	PER 1000 SQ. FT.	USE INFORMATION
Crabgrass ( <i>Digitaria</i> spp.)	167 – 250 lbs.	3.83 – 5.74 lbs.	Apply in late winter or early spring prior to seed germination. Application made after March or April may not be fully effective. Late application will control only those weed seeds that germinate after the application.
Field Sandbur ( <i>Cenchus incertus</i> )			
Annual Sedge ( <i>Cyperus compressus</i> )	(2 – 3 lb. ai/A)		
Bittercress			
Carpetweed			
Carpetgrass			
Common Groundsel			
Common Purslane			
Fireweed			
Foxtail, Green, Bristly			
Fall Panicum			
Golden Ragwort			
Lambsquarter			
Pennsylvania Smartweed			
Sensitive plant			
Shepherdspurse			
Sow Thistle			
Speedwell			
Spotted Ceaser			
Virginia Buttonweed			
Yellow Woodsorrel			

Note to PM:

***Bold, italicized text is for the reader and is not a part of the label.***

[Bracketed information is optional] Text separated by / denotes and/or options

Annual Bluegrass[*] ( <i>Poa annua</i> spp.) (see note following tables, below)	167 – 250 lbs.  (2 – 3 lb. ai/A)	3.83 – 5.74 lbs.	Apply in late summer to early fall prior to seed germination. Will not control annual bluegrass present at the time of application, only germinating seeds.
Virginia Buttonweed ( <i>Diodia virginiana</i> ) Pigweed ( <i>Amaranthus</i> spp.) Florida Pusley ( <i>Richardia scabra</i> ) Oxalis ( <i>Oxalis</i> spp.) Stinging Nettle ( <i>Urtica dioica</i> ) Carpetgrass ( <i>Axonopus offinis</i> ) Barnyardgrass Evening Primrose Galinsoga Goosegrass ( <i>Eleusine indica</i> ) Jungle Ricegrass Liverwort Panama Paspalum Spurge, Garden, Petty, Prostrate Swinecress	250 lbs.  (3 lb. ai/A)	5.74 lbs.	Apply in early spring prior to seed germination. Will not control emerged and growing weeds; only effective against germinating weed seeds

**[\*Not for use in California]**

**FALL APPLICATION FOR SPRING WEED CONTROL IN COOL SEASON TURF**

AMOUNT OF [TURF FERTILIZER WITH RONSTAR 1.2]/[This product]			
WEEDS CONTROLLED	PER ACRE	PER 1000 SQ. FT.	USE INFORMATION
Crabgrass, Goosegrass and other annual weeds listed above.	250 lbs  (3 lb. ai/A)	5.74 lbs.	For use in Bluegrass, Bentgrass, Perennial Ryegrass and Tall Fescue turf. Make application in the fall after turf has become dormant. For late fall applications, seeding into treated areas MUST be delayed until 4 months after green up.

**ANNUAL BLUEGRASS CONTROL IN BERMUDAGRASS FAIRWAYS OVERSEEDED WITH PERENNIAL RYEGRASS ONLY**

AMOUNT OF [TURF FERTILIZER WITH RONSTAR 1.2]/[This product]			COOL SEASON TURF
WEEDS CONTROLLED	PER ACRE	PER 1000 SQ. FT.	USE INFORMATION

Note to PM:

**Bold, italicized text is for the reader and is not a part of the label.**

[Bracketed information is optional] Text separated by / denotes and/or options

Annual Bluegrass ( <i>Poa annua</i> spp.) See Note below	167 lbs.  (2 lb. ai/A)	3.83 lbs.	Apply in late summer to early fall prior to <i>Poa annua</i> spp. seed germination. Any <i>Poa annua</i> spp. established when this product is applied will not be controlled. It should not be applied closer than 60 days to overseeding. Do not use where <i>Poa trivialis</i> is present in the overseed mixture. Apply the full 2 lb. rate in one application.  This product will only control the <i>Poa annua</i> spp. that is established from seed every year. <b>Do not overseed fairways before 60 days after an application of this product.</b> Do not use where <i>Poa trivialis</i> is present in overseed mix.
--	------------------------------	-----------	--

**NOTE:** In many areas, annual bluegrass exists as at least two biotypes or subspecies of *Poa annua*. The true annual biotype is *Poa annua* spp. *annua* which germinates every year from seed, while the biotype that behaves like a perennial is *Poa annua* spp. *reptans*. This perennial biotype can survive through the summer and established plants will not be controlled by this product. Consult the extension service or University weed specialists in your area for more information.

**ANNUAL WEED CONTROL DURING BERMUDAGRASS, ZOYSIAGRASS, SEASHORE PASPALUM, AND TROPIC LALO (*Paspalum hieronymii*) ESTABLISHMENT FROM SPRIGS[\*]**

AMOUNT OF [TURF FERTILIZER WITH RONSTAR 1.2]/[This product]			
WEEDS CONTROLLED	PER ACRE	PER 1000 SQ. FT.	USE INFORMATION
Crabgrass, Goosegrass, Annual Sedge, and other annual weeds	167 – 250 lbs.  (2 – 3 lb. ai/A)	3.83 – 5.74 lbs.  Use the higher rate with expected heavier weed pressure	For Bermudagrass, make application immediately prior to or immediately after sprigging. For Seashore Paspalum, make application 10 to 14 days after sprigging. Applications made close to the time of sprigging may cause objectionable Seashore Paspalum injury. Disturbance of the soil surface after an application of this product may disrupt the herbicide barrier and reduce effectiveness. Irrigate immediately after application for best results.

[\*Not for use in California]

Avoid contact with flowers and shrubs except as specified elsewhere on this label.

When making applications to Tropic Lalo, applications must be made 0 – 12 days after sprigging. **DO NOT** use in areas where endangered Hawaiian Goose or nene (*Branta sandvicensis*), Hawaiian duck (*Anas wyvilliana*), Hawaiian Stilt (*Himantopus mexicanus knudseni*), or Hawaiian Moorhen (*Gallinula chloropus sandvicensis*) may feed.

**[FOR SPRING APPLICATION ON GOLF COURSES UNDER TURF MANAGEMENT**

Note to PM:

***Bold, italicized text is for the reader and is not a part of the label.***

[Bracketed information is optional] Text separated by / denotes and/or options

### **RATES CAN BE APPLIED AS A “SPLIT” APPLICATION]**

[Weed control and better turf management can be programmed by splitting the per acre rate of active ingredients into “two” separate applications. For example to accomplish this in Regions #3 and #4 (see a map of US) apply 1.5 lbs. AI (for a required 3 lbs. AI/acre rate) or 2 lbs. AI (for a required 4 lb. AI/acre rate) as the first application 4 to 5 weeks before estimated weed seed germination or in mid-March. Follow with the second “1/2 rate” in 60 days or approximately the last of April or first of May. The timing for these applications should be closely programmed to the geographic region (see US map) and adjusted to an “early” or “late” spring. Do not split the 2 lb. rate. The 3 lb. rate must not be split if applied to new turf areas first coming under turf management where weed pressure is expected to be heavy. Use the higher rate in areas of heavy weed infestation only.]

### **Controls Annual Broadleaf Weeds and Annual Grasses**

Annual Bluegrass	Evening Primrose	Jungle Ricegrass	Sow thistle
Annual Sedge	Fireweed	Lambsquarter	Speedwell
Barnyardgrass	Field Sandbur	Liverwort	Spotted Catsear
Bittercress	Foxtail: Green, Bristly	Oxalis	Spurge; Garden, Petty,
Carpetweed	Fall Panicum	Panama Paspalum	Prostrate
Carpetgrass	Florida Pusley	Pennsylvania Smartweed	Stinging Nettle
Common Groundsel	Galinsoga	Redroot Pigweed	Swinecress
Common Purslane	Golden Ragwort	Sensitive Plant	Virginia Buttonweed
Crabgrass	Goosegrass	Shepardspurse	Yellow Woodsorrel

### **WOODY ORNAMENTAL SHRUBS, VINES, TREES AND CONIFER NURSERY APPLICATION**

Apply [Turf Fertilizer with RONSTAR® 1.2]/[this product] anytime during the year, prior to weed seed germination, for weed control. [Turf Fertilizer with RONSTAR® 1.2]/[This product] can be applied to both newly transplanted and established ornamentals. Application can be made to actively growing or dormant ornamentals. After application, user must thoroughly irrigate the site as soon as possible on the same day of application. [Turf Fertilizer with Ronstar® 1.2]/[This product] must not be mixed into the soil. Cultivating or disturbing the soil may reduce the weed control activity of this product. **For residential properties, do not allow unprotected persons or pets to enter the treated areas until this product has been watered-in.**

**ORNAMENTALS ON RESIDENTIAL PROPERTIES:** (Not for use on turfgrass on residential properties): [Turf Fertilizer with Ronstar 1.2]/[This product] may be applied to landscape beds consisting of well-defined areas of solid or mixed stands of trees, shrubs, and ground covers located around the outside of buildings and other structures as well as open areas of the residential property. The landscape beds must not include any turfgrass lawn within the defined limits of the beds. **Applications of [Turf Fertilizer with Ronstar 1.2]/[this product] must be made by a professional applicator only.** Carefully measure the area of all beds to be treated to insure accurate application rate.

### **RESTRICTIONS:**

- **DO NOT** apply in greenhouses as plant injury may result from co-distillation of the active ingredient onto leaf surfaces in condensate.
- **DO NOT** apply to wet foliage or under conditions in which granules will collect on leaves.
- **DO NOT** use this product in Conifer Nurseries in California
- For ornamental landscaping, trees, shrubs, and nurseries, the maximum single application rate is 3.0 lbs a.i./A, and the maximum annual application rate is 6.0 lbs a.i./A.

Note to PM:

**Bold, italicized text is for the reader and is not a part of the label.**

[Bracketed information is optional] Text separated by / denotes and/or options

**AMOUNT TO USE:**

Ground Application—Apply [Turf Fertilizer with RONSTAR® 1.2]/[this product] as a broadcast application to ornamentals at 167 to 250 pounds of product per acre (2 – 3 lb. ai/A), (or 3.8 to 5.74 pounds per 1,000 sq. ft.) depending on the weeds to be controlled, as listed below. Remove existing weed growth before application. Use the higher rate with expected heavier weed pressure.

ANNUAL BROADLEAF WEEDS		ANNUAL GRASSES	
Bittercress	<i>(Cardamine spp.)</i>	Annual Bluegrass	<i>(Poa annua)</i>
Bristly Oxtongue[†]	<i>(Picris echioides)</i>	Annual Sedge[†]	<i>(Cyperus compressus)</i>
Carpetweed	<i>(Mollugo verticillata)</i>	Barnyardgrass	<i>(Echinochloa crus-</i> <i>galli)</i>
Cheeseweed[†]	<i>(Malva parviflora)</i>	Bristly Foxtail[†]	<i>(Setaria verticillata)</i>
Common Groundsel	<i>(Senecio vulgaris)</i>	Crabgrass	<i>(Digitaria spp.)</i>
Common Purslane	<i>(Portulaca oleracea)</i>	Fall Panicum	<i>(Panicum</i> <i>dichotomiflorum)</i>
Evening Primrose	<i>(Oenothera spp.)</i>	Green Foxtail	<i>(Seetaria viridis)</i>
Fiddleneck[†]	<i>(Amsinckia intermedia)</i>	Goosegrass	<i>(Eleusine indica)</i>
Fireweed[†]	<i>(Epilobium angustifolium)</i>	Jungle Ricegrass	<i>(Echinochloa colonum)</i>
Galinsoga	<i>(Galinsoga spp.)</i>	Panama Paspalum	<i>(Paspalum</i> <i>fimbriaatum)</i>
Garden Spurge†	<i>(Euphorbia hirta)</i>	Ripgut Bromegrass[†]	<i>(Bromus</i> <i>catharticus)</i>
Golden Ragwort	<i>(Senecio aureus)</i>	Wild Oats[†]	<i>(Avena fatua)</i>
Lambsquarters	<i>(Chenopodium album)</i>		
Liverwort	<i>(Marchantia spp.)</i>		
Niruri[†]	<i>(Phyllanthus niruri)</i>		
Pennsylvania Smartweed	<i>(Polygonum</i> <i>pensylvanicum)</i>		
Petty Spurge	<i>(Euphorbia peplus)</i>		
Prostate Spurge	<i>(Euphorbia supina)</i>		
Redroot Pigweed	<i>(Amaranthus retroflexus)</i>		
Shepherdspurse[†]	<i>(Capsella bursa-pastoris)</i>		
Sensitive Plant[†]	<i>(Mimosa pudica)</i>		
Sow Thistle	<i>(Sonchus oleraceus)</i>		
Speedwell	<i>(Veronica spp.)</i>		
Spiny Amaranth[†]	<i>(Amaranthus spinosus)</i>		
Spotted Catsear	<i>(Hypochaeris radicata)</i>		
Swinecress	<i>(Coronopus didymus)</i>		
Yellow Woodsorrell	<i>(Oxalis stricta)</i>		

[†Not for use in California]

**(Note: Spreader Section is optional)**

**[SPREADER SETTINGS] / [COVERAGE INFORMATION]**

[50 lb will cover up to 13,055 sq. ft.]

Note to PM:

***Bold, italicized text is for the reader and is not a part of the label.***

[Bracketed information is optional] Text separated by / denotes and/or options

		Application Rates		
		[3.83 lb/1,000 sq. ft. = 167 lb/A (= 2.0 lb ai/A) Covers: 13,055 sq. ft.]	[5.74 lb/1,000 sq. ft. = 250 lb/A (= 3.0 lb ai/A) Covers: 8,711 sq. ft.]	[7.65 lb/1,000 sq. ft. = 333 lb/A (= 4.0 lb ai/A) Covers: 6,527 sq. ft.]
[Spreader Name]	[Amount of Product]	[Spreader Settings]		
[Spyker 288 Super]	[XX]	[XX]	[XX]	[XX]
[Lesco Rotary (Model 021820)]				
[Scott's ProTurf R8A-1]				
[Lesco 36" Drop Spreader]				
[Lely HR Three Point Hitch Single Disc Broadcaster]				
[Vicon Super Flow PS 203]				

***"X" will be replaced with correct value on final label.***

### TOLERANT SPECIES OF ORNAMENTALS AND GROUND COVERS

[Turf Fertilizer with RONSTAR 1.2]/[This product] may be applied to established ornamental plants (including plants grown for ground covers) and ground cover plants in containers, nurseries, and landscape plantings. This product may be applied on the following ornamental varieties.

ESTABLISHED ORNAMENTALS AND GROUND COVERS			
COMMON NAME	SCIENTIFIC NAME	COMMON NAME	SCIENTIFIC NAME
Abutilon	<i>Abutilon pictum</i>	Citrus, Ornamental*	
Acacia	<i>Acacia</i> spp.	Grapefruit	<i>Citrus paradisi</i>
Agapanthus	<i>Agapanthus africanus</i>	Lemon	<i>Citrus limon</i>
Allamanda, Common	<i>Allamanda cathartica</i>	Lime	<i>Citrus aurantifolia</i> Bearss
Alpine Willow	<i>Epilobium fleisheri</i>	Mandarin	<i>Citrus reticulata</i>
Andromeda	<i>Pieris</i> spp.	Tangelo	<i>Citrus x Tangelo</i> Minneola
Anthuriums (Ozaki red)[†]		Tangerine	<i>Citrus reticulata</i> var. <i>tangerina</i>
Apache Plume	<i>Fallugia paradoxa</i>	Temple	<i>Citrus Xnobilis</i> Temple
Aralia	<i>Aralia spinosa</i>	Cuban Shaddock	<i>Citrus maxima</i>
Arborvitae	<i>Thuja</i> spp.	Valencia	<i>Citrus sinensis</i>
Ash, Green	<i>Fraxinus pennsylvanica</i>	Washington naval	<i>Citrus sinensis</i>
Azalea	<i>Rhododendron</i> spp.	Cleyera[†]	<i>Cleyera japonica</i>
Baby's Breath[†]	<i>Gypsophilia paniculata</i>	Coreopsis[†]	<i>Coreopsis lanceolata</i>
Bald Cypress[†]	<i>Takodium distichum</i>	Coromandel[†]	<i>Asystasia gargentica</i>
Bamboo, Feathery	<i>Bambusa vulgaris</i>	Cotoneaster	<i>Cotoneaster</i> spp.
Banyan, Weeping	<i>Ficus benghalensis</i>	Crabapple[†]	<i>Malus</i> spp.
Barberry	<i>Berberis</i> spp.	Crapemyrtle	<i>Lagerstroemia indica</i>
Beafsteak plant	<i>Acalypha wilkesiana</i>	Creeping Phlox	<i>Phlox subulata</i>
Bearberry	<i>Arctostaphylos uva-ursi</i>	Chrysanthemum	<i>Chrysanthemum</i> spp.
Beech, European	<i>Fagus sylvatica</i>	Cypress	<i>Cupressus</i> spp.
Birch, Paper	<i>Betula papyrifera</i>	Cypress, Leyland	<i>Cupressocyparis leylandii</i>
Blanket Flower[†]	<i>Gaillardia aristata</i>	Dahlia[†]	<i>Dahlia</i> spp.
Blazing Star[†]	<i>Liatris spicata</i>	Daphne, Fragrant	<i>Daphne odora</i>
Boxwood, Japanese	<i>Buxus microphylla</i>	Deutzia, Slender	<i>Deutzia gracilis</i>
Boxwood, Common	<i>Buxus sempervirens</i>	Dieffenbachia[†]	<i>Dieffenbachia</i> spp.
Bougainvillea			

Note to PM:

**Bold, italicized text is for the reader and is not a part of the label.**

[Bracketed information is optional] Text separated by / denotes and/or options

Brassaia, Dwarf Buddleia Bugleflower[†] Callistemon Camellia, Common Japanese Camellia, Sasanqua Candytuft Carissa Carnation Ceanothus Cedar, Red Cedar, Atlas Cistus	<i>Bouganvillea spectabilis</i> <i>Brassaia actinopylla</i> <i>Buddleia davidii</i> <i>Ajuga reptans</i> <i>Callistemon lanceolatus</i> <i>Camellia japonica</i>  <i>Camellia sasanqua</i> <i>Iberis sempervirens</i> <i>Carissa macrocarpa</i> <i>Dianthus caryophyllus</i> <i>Ceanothus americanus</i> <i>Juniperus virginia</i> <i>Cedrus atlantica</i> <i>Cistus purpureus</i>	Dogwood, Common Dogwood, Redosier Doxwood, Kousa Douglas Fir Elm Escallonia Eucalyptus Euryops, Gray Leaved Euonymus, Spreading Euonymus, Wintercreeper Falsecypress Hinoki Falsecypress, Japanese Flowering Quince Forsythia Fountain Grass Gardenia Gazania, Trailing  Ginko	<i>Cornus florida</i> <i>Cornus stolonifera</i> <i>Cornus kousa</i> <i>Pseudotsuga menziesii</i> <i>Ulmus</i> spp. <i>Escallonia</i> spp. <i>Eucalyptus</i> spp. <i>Euryops pectinatus</i> <i>Euonymus kiautschovicus</i> <i>Euonymus fortunei</i> <i>Chaemaecyparis obtusa</i> <i>Chaemaecyparis pisifera</i> <i>Chaenomeles speciosa</i> <i>Forsythia intermedia</i> <i>Pennisetum alopecuroides</i> <i>Gardenia jasminoides</i> <i>Gazania uniflora</i> <i>leucoleana</i> <i>Ginko biloba</i>
--	--	--	--

\*For use only on plants that will not bear edible fruit within one year of application of this product.

[†Not for use in California]

ESTABLISHED ORNAMENTALS AND GROUND COVERS (con't)			
COMMON NAME	SCIENTIFIC NAME	COMMON NAME	SCIENTIFIC NAME
Gladiolus[†]	<i>Gladiolus</i> spp.	Oak	<i>Quercus</i> spp.
Golden Raintree[†]	<i>Koelreuteria paniculata</i>	Ochana	<i>Ochana serrulata</i>
Heath, Spring	<i>Erica carnea</i>	Ohai	<i>Samanea saman</i>
Heather, Scotch	<i>Calluna vulgaris</i>	Oleander	<i>Nerium oleander</i>
Heliotropium	<i>Heliotropium arborescens</i>	Orthosiphon	<i>Orthosiphon stamineus</i>
Hemlock, Canada[†]	<i>Tsuga canadensis</i>	Osmanthus	<i>Osmanthus heterophyllus</i>
Hibiscus	<i>Hibiscus</i> spp.	Pachysandra	<i>Pachysandra terminalis</i>
Honeysuckle	<i>Lonicera</i> spp.	Palm, Bamboo	<i>Rhapi excelsa</i>
Holly	<i>Ilex</i> spp.	Palm, Fishtail	<i>Caryota</i> spp.
Ice Plant	<i>Carpobrotus edule</i>	Palm, Licuala	<i>Licuala Thunb</i> spp.
Ilima	<i>Sida fallax</i>	Palm, Macarthur	<i>Ptychosperma marcarthurii</i>
Ivy, Algerian	<i>Hedera canariensis</i>	Palm, Manac	<i>Euterpe</i> spp.
Ivy, English	<i>Hedera helix</i>	Palm, Manila	<i>Veitchia merillii</i>
Jasmine, Orange	<i>Murraya paniculata</i>	Palm, Parlor	<i>Collinia elegans</i>
Jasmine, Primrose	<i>Jasminum mesnyi</i>	Palm, Rattan	<i>Daemonorops</i> spp.
Jasmine, Star	<i>Trachelospermum jasminoides</i>	Palm, Sealing Wax	<i>Cyrtostachyus lakka</i>
Jasmine, Showy	<i>Jasminum floridum</i>	Palm, Sugar	<i>Arenga saccharifera</i>
Juniper	<i>Juniperus</i> spp.	Paperbark Tree[†]	<i>Melaleuca leucadendra</i>
Justica	<i>Justica brandegeana</i>	Peony[†]	<i>Paeonia</i> spp.
Kwanzan Cherry[†]	<i>Prunus serrulata</i>	Periwinkle, Common	<i>Vinca minor</i>
Lamb's Ear[†]	<i>Stachys byzantina</i>	Periwinkle, Large	<i>Vinca major</i>
Lantana Trailing	<i>Lantana montevidensis</i>	Photinia, Frasier's	<i>Photinia frasieri</i>
Lapalapa	<i>Cheirodendron</i> spp.	Poinciana	<i>Delonix regea</i>
Larch, European	<i>Larix decidua</i>	Pine	<i>Pinus</i> spp.
Laurel, English	<i>Prunus laurocerasus</i>	Pittosporum, Japanese	<i>Pittosporum tobira</i>
Leopards – Bane[†]	<i>Doronicum cordatum</i>	Plum, Natal	<i>Carissa macrocarpa</i>
		Podocarpus, Yew	<i>Podocarpus macrophylla</i>

Note to PM:

***Bold, italicized text is for the reader and is not a part of the label.***

[Bracketed information is optional] Text separated by / denotes and/or options

Leucothoe, Coast	<i>Leucothoe axillaries</i>	Pomegranate*	<i>Punica granatum</i>
Leucothoe, Drooping	<i>Leucothoe fontanesiana</i> <i>(catesbaei)</i>	Poplar	<i>Populus</i> spp.
Lily of the Nile	<i>Agapanthus umbellatus</i>	Potentilla	<i>Potentilla fruitcosa</i>
Lilac	<i>Syringa</i> spp.	Potentilla	<i>Potentilla fragiformis</i>
Littleleaf Linden[+]	<i>Tilia cordata</i>	Privet	<i>Ligustrum</i> spp.
Little Pickles	<i>Othonna capensis</i>	Protea species	<i>Banksia menziesii</i>
Loquat*	<i>Eriobotrya japonica</i>		<i>Leucadendron discolor</i>
Magnolia	<i>Magnolia</i> spp.		<i>Leucospermum cordifolium</i>
Mahonia, Grape Holly	<i>Mahonia aquifolium</i>	Pyracantha	<i>Protea exinia</i>
Maple	<i>Acer</i> spp.	Raphiolepis	<i>Pyracantha coccinea</i>
Metallic Plant	<i>Hemigraphis colorata</i>	Redwood, Dawn	<i>Raphiolepis umbellata</i>
Mexican Orange[+]	<i>Choisya ternate</i>	Rhododendron	<i>Metasequoia glyptostroboides</i>
Mock Orange[+]	<i>Philadelphus virginalis</i>	Rose	<i>Rhododendron</i> spp.
Money Tree	<i>Pleomele marginata</i>	Russian Olive	<i>Rosa</i> spp.
Murraea	<i>Murraea exotica</i>	Sargent Cherry[+]	<i>Eleagnus Angustifolia</i>
Murraea	<i>Murraea paniculata</i>		<i>Prunus sargentii</i>
Myoporum	<i>Myoporum laetum</i>		
Myrtle	<i>Myrtus communis</i>		
Nandina	<i>Nandina domestica</i>		

\*For use only on plants that will not bear edible fruit within one year of application of this product.

[+Not for use in California]

ESTABLISHED ORNAMENTALS AND GROUND COVERS (con't)	
COMMON NAME	SCIENTIFIC NAME
Scotch Broom	<i>Cytisus scoparius</i>
Sedum	<i>Sedum album</i>



Note to PM:

**Bold, italicized text is for the reader and is not a part of the label.**

[Bracketed information is optional] Text separated by / denotes and/or options

NEWLY TRANSPLANTED ORNAMENTALS AND GROUND COVERS			
COMMON NAME	SCIENTIFIC NAME	COMMON NAME	SCIENTIFIC NAME
Blanket Flower[†]	<i>Gaillardia aristata</i>	Oak	<i>Quercus</i> spp.
Brassaia, Dwarf	<i>Brassia actinophylla</i>	Periwinkle, Common	<i>Vinca minor</i>
Camellia	<i>Camellia japonica</i>	Periwinkle, Large	<i>Vinca major</i>
Carnation	<i>Diianthus caryophyllus</i>	Pine	<i>Pinus</i> spp.
Cedar, Red	<i>Juniperus atlantica</i>	Poplar	<i>Populus</i> spp.
Coromandel[†]	<i>Asystasia gagentica</i>	Privet	<i>Ligustrum</i> spp.
Dogwood, Flowering	<i>Cornus florida</i>	Protea Species	<i>Banksia menziesii</i>
Elm	<i>Ulmus</i> spp.		<i>Leucadendron discolor</i>
Forsythia	<i>Forsythia intermedia</i>		<i>Leucospermum cordifolium</i>
Gazania, Trailing	<i>Gazania uniflora leucoleana</i>		<i>Protea exinia</i>
Hackberry[†]	<i>Celtis occidentalis</i>	Rhododendron	<i>Rhododendrun</i> spp.
Ivy, Algerian	<i>Hedera canariensis</i>	Russian Olive	<i>Eleagnus angustifolia</i>
Ivy, English	<i>Hedera helix</i>	Spruce	<i>Picea</i> spp.
Hemlock, Canada	<i>Tsuga canadensis</i>	Trailing African Daisy	<i>Osteospermum fruticosum</i>
Holly	<i>Ilex</i> spp.	Wedelia	<i>Wedelia trilobata</i>
Ice Plant	<i>Carpobrotus edule</i>	Wisteria, Chinese[†]	<i>Wisteria synensis</i>
Juniper	<i>Juniperus</i> spp.	Yew[†]	<i>Taxus</i> spp.
Leopards – Bane[†]	<i>Doronicum cordatum</i>		
Metallic Plant	<i>Hemigraphis colorata</i>		
Serviceberry, Saskatoon*[†]	<i>Amelancheir alnifolia</i>		
Silver Butterfly Bush	<i>Buddleia altemifolia</i>		
Smith Buckhorn	<i>Rahmnus smithii</i>		
Speedwell	<i>Veronica spicata</i>		
Spruce	<i>Picea</i> spp.		
Statice[†]	<i>Limonium</i> spp.		
St.Johnswort, Golden	<i>Hypericum frondosum</i>		
St.Johnswort, Goldencup	<i>Hypericum patulum</i>		
Strawberry Tree	<i>Arbutus unedo</i>		
Sumac, Staghorn	<i>Rhus typhina</i>		
Sweet William[†]	<i>Dianthus barbatus</i>		
Syzygium	<i>Syzygium paniculatum</i>		
Trailing African Daisy	<i>Osteospermum fruticosum</i>		
Viburnum	<i>Viburnum</i> spp.		
Wedelia	<i>Wedelia trilobata</i>		
Wisteria, Chinese[†]	<i>Wisteria synensis</i>		
Witchhazel, Common[†]	<i>Hamamelis virginiana</i>		
Woadwaxen, Common[†]	<i>Genista tinctoria</i>		
Wooly Thyme	<i>Thymus pseudolanugirosis</i>		
Xylosma	<i>Xylosma congestum</i>		
Yellow Foxgolve	<i>Digitalis x mertonensis</i>		
Yew	<i>Taxus</i> spp.		

\*For use only on plants that will not bear edible fruit within one year of application of this product.

[† Not for use in California]

Note to PM:

***Bold, italicized text is for the reader and is not a part of the label.***

[Bracketed information is optional] Text separated by / denotes and/or options

### FOREST NURSERY APPLICATION

Seedlings of the following species may be treated with [Turf Fertilizer with RONSTAR 1.2]/[this product] at least 4 weeks after seedling emergence:

COMMON NAME	SCIENTIFIC NAME
Pine, Eastern White	<i>Pinus strobus</i>
Pine, Loblolly	<i>Pinus teada</i>
Pine, Slash	<i>Pinus caribaea</i>

### SENSITIVE VARIETIES OF ORNAMENTALS

Under certain growing conditions, the plant varieties listed below may be sensitive to [Turf Fertilizer with RONSTAR 1.2]/[this product]. Evaluate usage on a small scale prior to large scale applications.

PLANT SPECIES	VARIETIES
<i>Andromeda</i> ( <i>Pieris japonica</i> )	Snowdrift, Temple Bell
<i>Azalea</i> ( <i>Rhododendron</i> spp.)	Pink Champagne, Hershey, Leuchtenfuer, Memoire John Hearrens, Hino-Crimson, White Grandeur, Everest, Girard, Roberta
<i>Cotoneaster</i> ( <i>Cotoneaster</i> spp.)	Eichholz, Himalayan, Shangri-la
<i>Crapemyrtle</i> ( <i>Lagerstroemia indica</i> )	Petite Red Imperial, Seminole Bush
<i>Heath, Spring</i> ( <i>Erica carnea</i> )	Mediterranean Pink

Note to PM:

***Bold, italicized text is for the reader and is not a part of the label.***

[Bracketed information is optional] Text separated by / denotes and/or options

<i>Hemlock, Canada</i> ( <i>Tsuga canadensis</i> )	Pendula
<i>Hibiscus</i> ( <i>Hibiscus syriacus</i> )	Red Heart
<i>Rhododendron</i> ( <i>Rhododendron</i> spp.)	Daphnoides, Nova Zembla, Catawba Album
<i>Spruce, Norway</i> ( <i>Picea abies</i> )	Pumila
<i>Spruce, White</i> ( <i>Picea glauca</i> )	Densata
<i>Viburnum</i> ( <i>Viburnum</i> spp.)	Davidii

## STORAGE AND DISPOSAL

### PESTICIDE STORAGE

Do not contaminate water, food or feed by storage or disposal. Store product in its original bag, in a cool, dry, locked place out of reach of children. In case of spill, sweep up, and use according to directions or dispose of as follows.

### PESTICIDE DISPOSAL

Pesticide wastes are toxic. Improper disposal of excess pesticide, or rinsate is a violation of Federal law. If these wastes cannot be disposed of by use according to label instructions, contact your State Pesticide or Environmental Control Agency, or the Hazardous Waste representative at the nearest EPA regional office for guidance.

### CONTAINER HANDLING

For 50, 1000, 2000-pound bags and totes:

Nonrefillable container. Do not reuse or refill this container, offer for recycling if available. Completely empty bag into application equipment. Then dispose of empty bag in a sanitary landfill or by incineration, or, if allowed by State and local authorities, by burning. If burned stay out of smoke.

For Killebrews and other bulk transport vehicles:

Refillable container: Container handling instructions are not required. Cleaning before refilling is the responsibility of the refiller.

***(End Directions for Use)***

Note to PM:

***Bold, italicized text is for the reader and is not a part of the label.***

[Bracketed information is optional] Text separated by / denotes and/or options

[Turf Fertilizer With Ronstar 1.2]

**Guaranteed [Fertilizer] Analysis** [N-P-K]

Total Nitrogen (N) ..... XX%

XX % Ammoniacal Nitrogen

XX % Urea Nitrogen\*

Available Phosphate(P<sub>2</sub>O<sub>5</sub>) ..... XX%

Soluble Potash (K<sub>2</sub>O) ..... XX%

Derived from: Polymer-Coated Urea, Urea, Ammonium Phosphate, and Muriate of Potash.

\*X% Slowly Available/Slow Release/Controlled release nitrogen from polymer-coated urea.

[Information regarding the contents and levels of metals in this product is available on the internet at <http://www.aapfco.org/metals.html>]

F-352 (***Florida Fertilizer License Number***)

[Fertilizer] [Density] [Bulk Density]

[Any other state specific fertilizer required language]

***Note to PM : Appropriate fertilizer specific information will be inserted on Final Printed Label to replace "X".***

**IMPORTANT: READ BEFORE USE**

Read the entire Directions for Use, Conditions, Disclaimer of Warranties and Limitations of Liability before using this product. If terms are not acceptable, return the unopened product container at once.

By using this product, user or buyer accepts the following Conditions, Disclaimer of Warranties and Limitations of Liability.

CONDITIONS: The directions for use of this product are believed to be adequate and must be followed carefully. However, it is impossible to eliminate all risks associated with the use of this product. Crop injury, ineffectiveness or other unintended consequences may result because of such factors as weather conditions, presence of other materials, or the manner of use or application, all of which are beyond the control of Harrell’s LLC. All such risks shall be assumed by the user or buyer.

DISCLAIMER OF WARRANTIES: TO THE EXTENT CONSISTENT WITH APPLICABLE LAW, HARRELL’S LLC MAKES NO OTHER WARRANTIES, EXPRESS OR IMPLIED, OF MERCHANTABILITY OR OF FITNESS FOR A PARTICULAR PURPOSE OR OTHERWISE, THAT EXTEND BEYOND THE STATEMENTS MADE ON THIS LABEL. No agent of Harrell’s LLC is authorized to make any warranties beyond those contained herein or to modify the warranties contained herein. TO THE EXTENT CONSISTENT WITH APPLICABLE LAW, HARRELL’S LLC DISCLAIMS ANY LIABILITY WHATSOEVER FOR SPECIAL, INCIDENTAL OR CONSEQUENTIAL DAMAGES RESULTING FROM THE USE OR HANDLING OF THIS PRODUCT.

LIMITATIONS OF LIABILITY: TO THE EXTENT CONSISTENT WITH APPLICABLE LAW, THE EXCLUSIVE REMEDY OF THE USER OR BUYER FOR ANY AND ALL LOSSES, INJURIES OR DAMAGES RESULTING FROM THE USE OR HANDLING OF THIS PRODUCT, WHETHER IN CONTRACT, WARRANTY, TORT, NEGLIGENCE, STRICT LIABILITY

Note to PM:

***Bold, italicized text is for the reader and is not a part of the label.***

[Bracketed information is optional] Text separated by / denotes and/or options

OR OTHERWISE, SHALL NOT EXCEED THE PURCHASE PRICE PAID, OR AT HARRELL'S LLC'S ELECTION, THE REPLACEMENT OF PRODUCT.

NET WEIGHT: 50 lb, 1,000 lb, 2,000 lb; or BULK TRAILER

Manufactured By/Manufactured For/Sold By/ and Guaranteed By:

Harrell's, LLC

PO Box 807

Lakeland, FL 33802

RONSTAR® is a registered trademark of the Bayer

Growing a Better World® is a registered trademark of Harrell's, LLC

Note to PM:

***Bold, italicized text is for the reader and is not a part of the label.***

[Bracketed information is optional] Text separated by / denotes and/or options

## Optional State Fertilizer Restriction Statements

***(Note to PM: Fertilizer composition of products distributed in states with nitrogen and phosphorus fertilizer application restrictions will be formulated to contain percentages of nutrients that meet state fertilizer restrictions when applied according to the application rates for the active ingredient as specified in the Directions for Use.)***

***Appropriate statement to be inserted in the Application Restrictions Section of Label as necessary for State specific fertilizer restriction language regarding application of nitrogen and phosphorus. Some example statements are, but not limited to:***

[["In MD, NH, NJ, VA: Application rates of soluble nitrogen are not to exceed 0.7 lb. soluble N/1000 sq.ft./application."]]

[And/Or]: [In NH, NJ, VA: Application of a product containing phosphorus to turf is limited to establishing turf in the first growing season."]

[And/Or]: "Florida specific requirements for fertilizer use. For applications to Sports Turf, Golf Courses, Parks and Athletic Fields: Do not exceed fertilizer rates recommended in the document titled SL 191, "Recommendations for N,P,K and Mg for Golf Course and Athletic Field Fertilization based on Mehlich III Extractant."

[And/Or: Other state specific fertilizer language that may be required.]

[For Fertilizer Mixtures Containing Nitrogen]: [It is a violation of law in [Maryland][New Jersey][New Hampshire][list state(s)] to apply this product to turf at a rate that results in greater than 0.7 lb. per 1,000 sq. ft. of readily available nitrogen, or more than 0.9 lb. per 1,000 sq. ft. of total nitrogen, with a least 20% of which shall consist of slow release nitrogen, per application. Additional restrictions apply to total nitrogen applied to turf per season.]

[Products sold in Florida: The following statement shall be placed in the Directions for Use section (see that section above in label): [Apply only to actively growing turf. Do not apply near water, storm drains, or drainage ditches. Do not apply if heavy rain is expected. Apply this product only to your lawn, and sweep any product that lands in the driveway, sidewalk, or street, back onto your lawn. Check with your local Cooperative Extension Agency to obtain specific information on local turf best management practices. Check with your county or city government to determine if there are local regulations for fertilizer use.]

[Virginia applications: [Apply no more than 0.7 lb. per 1,000 sq. ft. of readily available nitrogen during any given 30-day period. Apply no more than 0.9 lb. (cool season grasses) or 1.0 lb. (warm season grasses) per 1,000 sq. ft. of total nitrogen, with at least 20% of which shall consist of slow release nitrogen, during any given 30-day period.]

[For Fertilizer Mixtures Containing Phosphorus]:

[For starter lawns in MD]: [In Maryland, a soil test is not required for a new lawn. Apply either 2 lbs. of phosphorus per 1,000 sq. ft. initially or apply 1 lb. of phosphorus per 1,000 sq. ft. twice during the starter year. On established turf, this product must be used in accordance with a soil test that was conducted by a

Note to PM:

***Bold, italicized text is for the reader and is not a part of the label.***

[Bracketed information is optional] Text separated by / denotes and/or options

laboratory identified under § 8-803.7 of the Agriculture Article, Annotated Code of Maryland, performed no more than 3 years before the application.] [Other state and local restrictions may apply]

[In Maryland] [For levels of phosphorus above 5%]: [This fertilizer contains phosphorus and may not be used on turf in the state of Maryland except when (1) providing nutrients to specific soils and target vegetation as determined to be necessary in accordance with a soil test that was conducted by a laboratory identified under §8-803.7 of the Agriculture Article, Annotated Code of Maryland, performed no more than 3 years before the application; (2) establishing vegetation for the first time, such as after land disturbance, provided the application is conducted in accordance with the recommended application rates established by the State; or (3) reestablishing or repairing a turf area. Not for use on established lawns or grass in Maryland.]

[For all %'s of phosphorus-containing fertilizers in VA]:

[Virginia Applications]: [This lawn/turf fertilizer contains phosphorous and is only for nonagricultural use on (i) turf during its first growing season, (ii) on turf areas being repaired or renovated, and (iii) on turf where a soil test performed within the last 3 years indicates a phosphorous deficiency. This fertilizer is not for the routine maintenance of turf.]

[Virginia & Maryland]: [When applied as directed, [we]/[Harrell's] guarantees the [controlled release]/[slow release]/[polymer-coated]/[Enhanced Efficiency] nitrogen fertilizer in this product will release at a rate not to exceed 0.7 lb. N/1,000 sq. ft./month.]

[Maryland Applications] [Do not apply near water storm drains or drainage ditches. Do not apply if heavy rain is expected. Apply this product only to your lawn, and sweep any product that lands on the driveway, sidewalk, or street back onto your [lawn and garden].]

Note to PM:

***Bold, italicized text is for the reader and is not a part of the label.***

[Bracketed information is optional] Text separated by / denotes and/or options

## OPTIONAL MARKETING CLAIMS AND LOGO'S

*(Note: The following logos and/or claims may or may not be used on the FPL)*

### Company Specific Information

*(Harrell's Corporate Logo)*



Growing a Better World is a registered trademark of Harrell's, LLC

Harrell's PROFertilizer® is a registered trademark of Harrell's, LLC

*(Harrell's "H" Logo)*



---

Contact us/ For more information

[call] 800.282.8007

Harrell's label identifier format: [EPA Reg No.Product Name.label revision date (yyyymmdd)]

### FERTILIZER CLAIMS

Contains/Formulated with/ Harrell's PROFertilizer

Turf Fertilizer with Ronstar 1.2 is part of the Harrell's PROFertilizer portfolio/line/family of products

Contains POLYON® Slow release/controlled release/slowly available nitrogen/phosphate/potassium/fertilizer

POLYON® Turf Fertilizer

POLYON® Polymer Coated Fertilizer

POLYON® [ST]/[short term] [Slow]/[Controlled]- release fertilizer

POLYON® [ST] – Distributed exclusively by Harrell's, LLC

POLYON® [ST]/[short term] [Slow]/[Controlled]- release fertilizer POLYON® [ST] – Distributed exclusively by Harrell's

[Powered by] POLYON® [Slow]/[Controlled]-Release Fertilizer

POLYON®, the POLYON® logo, and the Green color of the POLYON® capsule are registered trademarks of Harrell's Coatings Solutions, LLC

POLYON® feeds/releases for up to X weeks/months at X° F

***(note to PM: release time and temperature is based on the coating thickness of the polymer coated fertilizer used in the blend and inserted for the appropriate product – this information is being required by fertilizer control officials in some states)***



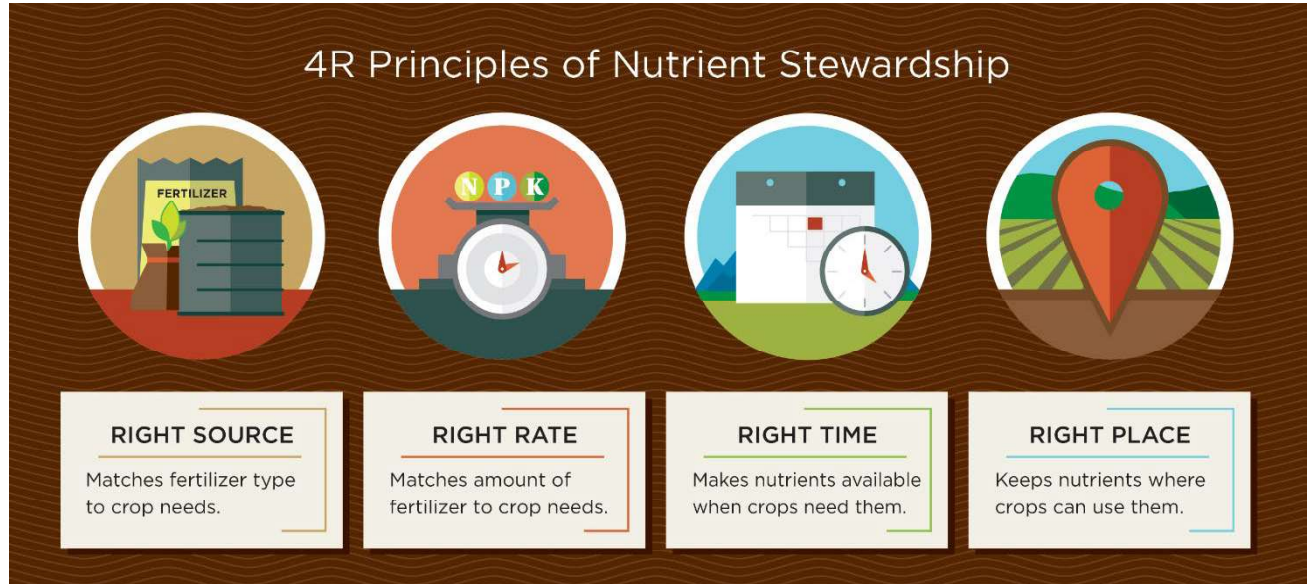
Note to PM:

***Bold, italicized text is for the reader and is not a part of the label.***

[Bracketed information is optional] Text separated by / denotes and/or options

Notice: [Fertilizer] may cause staining on concrete [hard surfaces]. Sweep or blow, do not wash, fertilizer granules onto treatment area.

***Nutrient Stewardship graphic depicted below. This is a TFI (The Fertilizer Institute) sponsored program. Graphic provided by TFI.***



Or

