

Use below for size and appearance.

121

Not part of
ink label,
ink letter at
time of
production.

Lot No.

PRECAUTIONARY STATEMENTS
Hazards to Humans and Domestic Animals
Directions For Use It is a violation of Federal law to use this product in a manner inconsistent with its labeling. Spray stream into face and eyes of attacking dog to prevent dog bite. Will immediately repel and subdue dogs when sprayed into face and eyes. Direct application must be made. The effective range of the dog repellent is up to 10 feet. Effectiveness against trained attack dogs not established.
First Aid If in eyes, in nose or on skin: Irrigate with plenty of clean water. If irritation persists, see a physician.
Physical or Chemical Hazards
 Contents under pressure. Do not puncture. Do not use or store near heat or open flame. Exposure to temperatures above 130 F may cause bursting. Never throw container into fire or incinerator.
Storage and Disposal
 Storage: Store only in a cool, dry place inaccessible to children and pets.
 Disposal: When empty, replace cap. Securely wrap in newspaper and discard in trash. Do not incinerate or puncture.

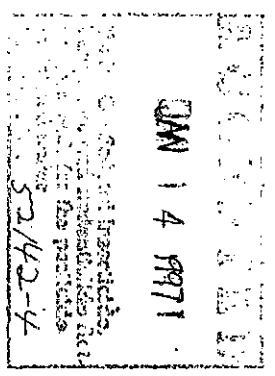
Mfg. in 1997

Dog Repellent
 For Personal protection from dog attack.
WARNING: Strongly irritating to eyes, nose and skin. Avoid contact with liquid spray. Keep out of reach of children.
 See back panel for warnings and other information.
 EPA Reg. No. 52142-4
 EPA Est. No. 52142-MO-2

Active Ingredients	0.35%
Capsaicin and Related Capsaicinoids*	99.65%
Inert Ingredients	
* Derived from Oleoresin of Capsicum	

Net Wt. 1 1/2 oz.
 Mfg. by LHB Industries
 St. Louis, MO 63134

Use below for text review only.



Highlighted words to print in Pantone 192C RED.
 The remainder to be printed in BLACK.

Dog Repellent

For Personal protection from dog attack.
WARNING: Strongly irritating to eyes, nose and skin. Avoid contact with liquid spray. Keep out of reach of children.
 See back panel for warnings and other information.

EPA Reg. No. 52142-4
 EPA Est. No. 52142-MO-2

Active Ingredients
 Capsaicin and Related Capsaicinoids* 0.35%
 Inert Ingredients 99.65%
 * Derived from Oleoresin of Capsicum

Net Wt. 1 1/2 oz.

Mfg. by LHB Industries
 St. Louis, MO 63134

PRECAUTIONARY STATEMENTS

Hazards to Humans and Domestic Animals

Directions For Use It is a violation of Federal law to use this product in a manner inconsistent with its labeling. Spray stream into face and eyes of attacking dog to prevent dog bite. Will immediately repel and subdue dogs when sprayed into face and eyes. Direct application must be made. The effective range of the dog repellent is up to 10 feet. Effectiveness against trained attack dogs not established.

First Aid If in eyes, in nose or on skin: Irrigate with plenty of clean water. If irritation persists, see a physician.

Physical or Chemical Hazards

Contents under pressure. Do not puncture. Do not use or store near heat or open flame. Exposure to temperatures above 130F may cause bursting. Never throw container into fire or incinerator.

Storage and Disposal

Storage: Store only in a cool, dry place inaccessible to children and pets.

Disposal: When empty, replace cap. Securely wrap in newspaper and discard in trash.

Do not incinerate or puncture. Mfg. in 1997