


51934-6

08/10/2001

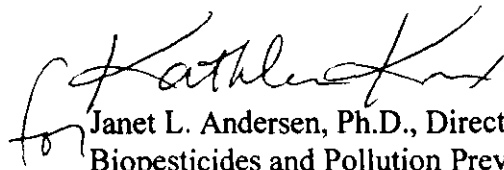
1/6

| | | |
|---|--|---|
|  U.S. ENVIRONMENTAL PROTECTION AGENCY Office of Pesticide Programs Biopesticides and Pollution Prevention Division (7511C) 1200 Pennsylvania Avenue NW Washington, DC 20460 | EPA Reg. Number: 51934-6 | Date of Issuance: AUG 10 2001 |
| | Term of Issuance: Unconditional | |
| | Name of Pesticide Product: Trece Japanese Beetle Trap | |
| NOTICE OF PESTICIDE: <input checked="" type="checkbox"/> Registration <input type="checkbox"/> Reregistration (under FIFRA, as amended) | | |
| Name and Address of Registrant (include ZIP Code): Trece, Inc. 1031 Industrial Street Suite 3 Salinas, CA 93901 | | |
| Note: Changes in labeling differing in substance from that accepted in connection with this registration must be submitted to and accepted by the Biopesticides and Pollution Prevention Division prior to use of the label in commerce. In any correspondence on this product always refer to the above EPA registration number. | | |
| <p>On the basis of information furnished by the registrant, the above named pesticide is hereby registered/reregistered under the Federal Insecticide, Fungicide and Rodenticide Act.</p> <p>Registration is in no way to be construed as an endorsement or recommendation of this product by the Agency. In order to protect health and the environment, the Administrator, on his motion, may at any time suspend or cancel the registration of a pesticide in accordance with the Act. The acceptance of any name in connection with the registration of a product under this Act is not to be construed as giving the registrant a right to exclusive use of the name or to its use if it has been covered by others.</p> <p>This registration does not eliminate the need for continual reassessment of the pesticide. If EPA determines at any time, that additional data are required to maintain in effect an existing registration, the Agency will require submission of such data under section 3(c)(2)(B) of FIFRA.</p> <p>This product is registered in accordance with FIFRA section 3(c)(5) and is subject to the following terms and conditions:</p> <ol style="list-style-type: none">1. Modify your label by inserting the new EPA Reg. No. 51934-6 before the release of your product for shipment.2. Submit five (5) copies of the revised final printed labeling before you release the product for shipment. | | |
| Signature of Approving Official: (See second page for signature) | | Date: |

Page 2

A stamped copy of the label is enclosed for your records.

Sincerely,

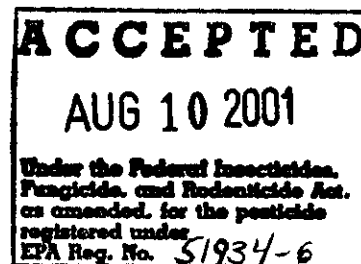
A handwritten signature in cursive script, appearing to read "Janet L. Andersen".

Janet L. Andersen, Ph.D., Director
Biopesticides and Pollution Prevention Division

3/6

Draft Label
Trece Japanese Beetle Trap
May 20, 2001 & Rev. 6/27/01, 7/6/01
1 of 4

TRECE JAPANESE BEETLE TRAP



This Package Contains:

- One DOUBLE LURE containing a food-floral attractant and sex pheromone attractant in a sealed pouch.

| | |
|--|----------------|
| FLORAL LURE | |
| Net Weight 8.00 g | |
| ACTIVE INGREDIENTS | |
| Eugenol..... | 22.25% |
| Geraniol..... | 9.50% |
| 2-Phenyl Ethyl Propionate..... | 9.50% |
| INERT INGREDIENTS | <u>58.75%</u> |
| Total 100.00% | |
| SEX LURE (PHEROMONE) | |
| Net Weight 750 mg | |
| ACTIVE INGREDIENT | |
| (R,Z)-5-(1-Decenyl) dihydro-2(3H) Furanone*..... | 0.133% |
| INERT INGREDIENTS | <u>99.867%</u> |
| Total 100.00% | |
| * 1 mg. per dispenser. | |

KEEP OUT OF REACH OF CHILDREN
CAUTION
SEE BACK PANEL FOR ADDITIONAL PRECAUTIONARY STATEMENTS

PRECAUTIONARY STATEMENT

Hazards to humans (and domestic animals)

CAUTION: Avoid contact with skin, eyes, or clothing. Wash thoroughly with soap and water after handling.

FIRST AID

| | |
|-------------------------------|---|
| If on skin or clothing | If on skin or clothing: - Take off contaminated clothing. - Rinse skin immediately with plenty of water for 15-20 minutes. - Call poison control center or doctor for treatment advice. |
| If in eyes | If in eyes: - Hold eye open and rinse slowly and gently with water for 15-20 minutes. - Remove contact lenses, if present, after the first 5 minutes, then continue rinsing eye. - Call poison control center or doctor for treatment advice. |

HOT LINE NUMBER

Have the product container or label with you when calling a poison control center or doctor, or going for treatment. You may also contact 1-800-424-9300 for emergency medical treatment information.

ENVIRONMENTAL HAZARDS

Do not apply directly to water, or to areas where surface water is present or to intertidal areas below the mean high water mark. Do not contaminate water when cleaning equipment or disposing of equipment washwaters.

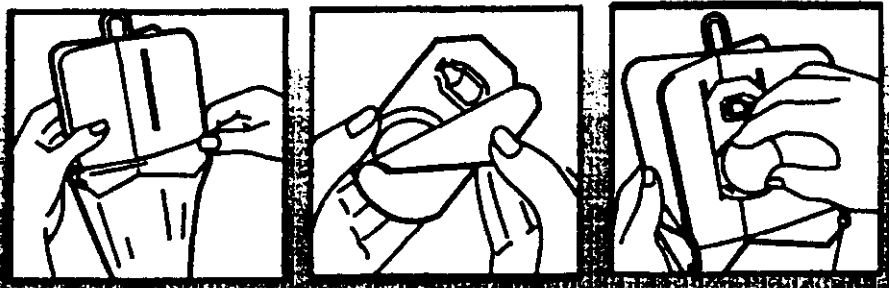
DIRECTIONS FOR USE

It is a violation of Federal law to use this product in a manner inconsistent with its labeling. For outdoor residential use only.

TRAP ASSEMBLY:

- Remove vanes, bag and lure from-box.
- Attach bag to the hooks on the sides of the vanes
- Peel top from the "DOUBLE-LURE" attractant.
- Insert the 'DOUBLE-LURE' inside vane slots with dispensers facing the vane

TRAP ASSEMBLY



HANGING TRAPS:

- Hang traps from a metal or wooden stake 3 to 5 feet above the ground at least 8 to 25 feet downwind from plants you are protecting. Be sure that the rod or stake is strong enough to prevent traps from detaching in windy conditions.
- Place traps in areas with minimum exposure to people or where pets or other animals do not have frequent access.
- For maximum effectiveness, use the suggested number of traps below:

| NUMBER OF TRAPS | LAWN OR GARDEN AREA |
|--|--|
| ONE | <5,000 square feet or 1/10 acre. |
| TWO | 5,000-10,000 square feet or 1/10-1/4 acre. |
| THREE | 10,000-15,000 square feet or 1/4-1/3 acre. |
| FOUR | 15,000-22,000 square feet or 1/3-1/2 acre. |
| USE AT 150-200FT. INTERVALS ALONG PERIMETER OF AREA | > 22, 000 square feet or > 1/2 acre. |

SUGGESTED TRAP MAINTENANCE:

- To replace bag, grasp the neck of the bag firmly in one hand and detach at each vane hook with the other hand.
- Twist neck of bag and secure with a twist tie.
- Place in securely covered garbage container.
- Replace bags when full or when they begin to emit an offensive odor, which can repel Japanese beetles.
- To reduce build up of odors or when holes become blocked during wet conditions, use a toothpick to unplug holes in bag to allow for drainage.
- Do not replace DOUBLE LURE—It lasts all season

Supplemental Treatment Tips: If the Japanese Beetle trap becomes over 1/2 full with beetles, this indicates a heavy population. To further protect desirable plants from feeding damage, spray susceptible plants with Bug-B-Gon Multi-Purpose Insect Killer, Concentrate or Isotox Insect Killer Formula IV. Also treat the lawn with Grub-B-Gon to prevent late season grub damage. Follow all label directions when using these products. **Continue trapping** for about 6 weeks after the first beetles are captured because new beetles will continue to emerge from the soil.

STORAGE AND DISPOSAL

STORAGE: Do not contaminate water, food, or feed by storage or disposal. Store in a cool, dry place. Do not open until ready to use.

DISPOSAL: When floral lure element no longer has detectable odor, wrap and dispose of it in regular trash collection. Sex lure may be disposed of in same manner.

6/6

Draft Label
Trece Japanese Beetle Trap
May 20, 2001 & Rev. 6/27/01, 7/6/01
4 of 4

This package contains:
1 Season-long sex/floral lure
1 set of vanes
1 set of 3 bags
1 hanger