

Net Contents 30 Gallons/113.6 Liters

51707-21

uses 50534-150



Diamond Shamrock

ACCEPTED
EPA REG. NO. 100-100000
EPA REG. NO. 100-100000

MCPP+2,4-D Amine (1 Plus 1) Turf Care™

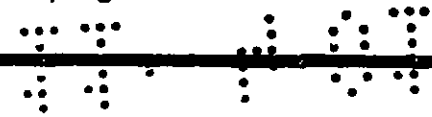
Active Ingredient:	(1) methylamine salt of 2,4-dichlorophenoxyacetic acid*	13.5%
	(1) methylamine salt of 2-(2-methyl-4-chlorophenoxy) propionic acid**	13.5%
Inert Ingredients:		73.0%
Total		100.0%

* Isomer specific by AOAC Method No. 6 D01-5 (12th ed.)

Keep Out of Reach of Children
CAUTION

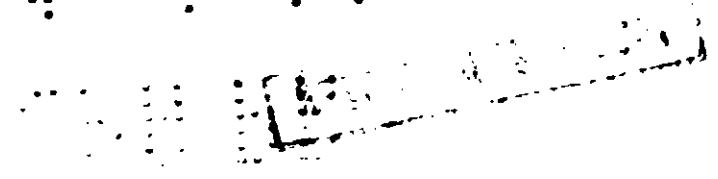
Only for Sale To, Use and Storage by Lawncare and Landscaping Personnel or Commercial Applicators

Diamond Shamrock Corporation
10000 North Central Expressway
Dallas, Texas 75243



Product No. 100-100000

3295-2020-8107



Precautionary Statements Hazards to Humans and Domestic Animals

Caution

See the label for information on the use of this product. Do not use this product in a manner inconsistent with its labeling.

Causes eye and skin irritation.

Do not breathe vapors.

Do not get this product on your face, hair, or clothing. If it does get on your face, hair, or clothing, wash immediately with plenty of water.

Do not get this product on your hands. If it does get on your hands, wash immediately with plenty of water.

Environmental Hazards

Do not apply to surface water.

Do not contaminate water by washing of equipment in or near it.

Do not contaminate ground water or water used for domestic purposes. Be sure to avoid spray contact with 2,4-D susceptible plants such as ornamentals, flowers, grapes, fruit trees, and vegetables.

Do not permit spray mist containing **MCPP - 2,4-D Amine (1 Plus 1)** to drift onto ornamentals, flowers, grapes, fruit trees, and vegetables.

Do not apply to surface water.

Do not contaminate ground water or water used for domestic purposes.

Do not permit spray mist containing **MCPP - 2,4-D Amine (1 Plus 1)** to drift onto ornamentals, flowers, grapes, fruit trees, and vegetables.

Do not apply to surface water.

Do not contaminate ground water or water used for domestic purposes.

MCPP - 2,4-D Amine (1 Plus 1)

Read and follow label before using this product.

General Information

MCPP - 2,4-D Amine (1 Plus 1), a selective weed killer for lawn grasses, is a post-emergence herbicide especially formulated for use on turfgrass for selective control of many broadleaf weeds commonly growing in lawns without injury to desirable grasses. This chemical may be used on all types of turf including Merion, Kentucky bluegrass, bermudagrass, fescues and rye grasses. This product has been used successfully on turf grass, however, it should not be used on a species or tests have shown it to be injurious to under the particular conditions of use. Do not use this product on weeds that are not listed. Most severe weed killer for lawn grasses.

Note: MCPP plants more slowly than 2,4-D. It kills the weeds which are controlled before others. Allow 3 to 4 weeks for complete weed killing action to occur.

The following is a partial list of weeds controlled by **MCPP - 2,4-D Amine (1 Plus 1)**.

- | | |
|------------------|-----------------|
| Buckhorn | Pigweed |
| Clover | Plantain |
| Common chickweed | Purslane |
| Corn dock | Ragweed |
| Dandelion | Red clover |
| English ivy | Red sorrel |
| Ground ivy | Spotted spurge |
| Knotweed | Spotted spurge |
| Large plantain | White clover |
| Meadow | Wild geranium |
| Meadow spurge | Wild radish |
| Mint | Yellow nutsedge |

Do not use this product on weeds which are not listed on the label.

Note: Local conditions, soil varieties and application regulations vary and may affect use of this herbicide. Consult local agricultural experiment station or extension service weed specialists and state regulatory agencies for recommendations in your area.

Note: Store at temperatures below 100°F. It may be necessary to warm contents to 60°F and mix thoroughly before using.

Directions for Use

It is a violation of Federal law to use this product in a manner inconsistent with its labeling.

Preparation of the Spray: This product must be mixed with water prior to use. For best results use 2 to 4 gallons of water per 1,000 sq. ft. for smaller areas. 20 to 40 gallons of water per acre for larger areas. Apply by means of a sprayer to give uniform coverage. Repeat applications may be necessary especially with heavy infestations of the less susceptible weeds indicated with an asterisk in above list.

Either before or after application, it is wise to properly fertilize the lawn so as to encourage the lawn to heal as rapidly as possible, filling in the bare areas where the weeds have died away. Once the weeds have been removed, the bare areas should be reseeded. Bare areas may be reseeded 3 to 4 weeks after application.

Time of Application: Apply in spring or fall when weeds are actively growing. Knotweed is controlled more easily in spring or early summer when weeds are young. **Do not** apply when turf is suffering from drought conditions or during very hot weather or damage to grass may result. **Do not** mow for several days before or after application. Withhold sprinkling for 24 hours after application. **Do not** apply during periods of heavy rain. **Do not** use on newly seeded areas. **Do not** use if you want clover in your turf. In some areas bent, carpet, buffalo and St. Augustine grasses may be injured therefore, **do not** use on turf where these grasses predominate.

Amount to Apply	Per 1,000 Sq. Ft.	Per Acre
Small areas	1 fl. ozs.	5 gals.
Large areas	5 fl. ozs.	25 gals.

Storage and Disposal

Do not contaminate water, food or feed by storage or disposal. Open dumping is prohibited.

Pesticide Disposal: Pesticide spray mixture or rinsate that cannot be used according to label instructions must be disposed of according to Federal, State or local procedures under the Resource Conservation and Recovery Act.

Container Disposal: **Do not** reuse empty container. Triple rinse (or equivalent) and offer for recycling or reconditioning or dispose of in a sanitary landfill or by other approved State and local procedures.

Warranty and Limitation of Damages

Seller warrants that this material conforms to its chemical description and is reasonably fit for the purposes stated on the label when used in accordance with directions under normal conditions of use and Buyer assumes the risk of any use contrary to such directions. **Seller makes no other express or implied warranty, including any other express or implied warranty of Fitness or of Merchantability, and no agent of Seller is authorized to do so except in writing with a specific reference to this warranty.** In no event shall Seller's liability for any breach of warranty exceed the purchase price of the material as to which a claim is made.

BEST AVAILABLE COPY

