

Revised draft in response to Agency letter of 6/2/95

TOMATO AND PEPPER FRUIT SET

Ready to Use

For Homeowner use in gardens and in home or hobby greenhouses.

ACTIVE INGREDIENTS:

Indolebutyric Acid0000240%
Gibberellic Acid0000224%
INERT INGREDIENTS:	99.9999536%
TOTAL	100.0000000%

KEEP OUT OF REACH OF CHILDREN

CAUTION

STATEMENT OF PRACTICAL TREATMENT

IF ON SKIN: Wash with plenty of soap and water. Get medical attention.

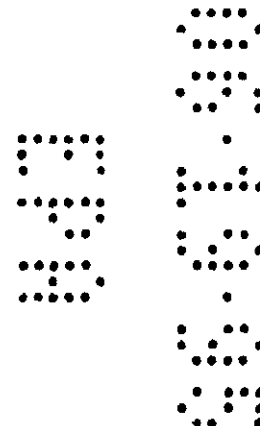
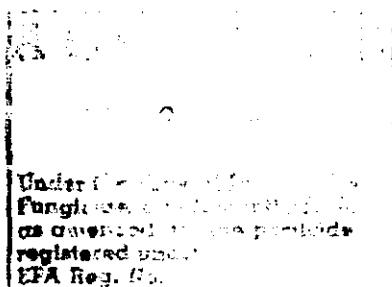
IF IN EYES: Flush eyes with plenty of water. Call a physician if irritation persists.

EPA Reg. No. 51036-ENG

EPA Est. No. 51036-GA-1

Manufactured by:
MICRO FLO CO.
P.O. Box 5948
Lakeland, FL 33807

NET CONTENTS: _____



7/2

PRECAUTIONARY STATEMENTS
Hazards to Humans and Domestic Animals

CAUTION

Harmful if absorbed through skin. Avoid contact with skin, eyes or clothing. Wash thoroughly with soap and water after handling.

ENVIRONMENTAL HAZARDS

Do not apply directly to water. Do not contaminate water when disposing of equipment washwaters.

DIRECTIONS FOR USE

It is a violation of Federal Law to use this product in a manner inconsistent with its labeling.

Do not spray flower beds, vegetables or ornamental plantings. Avoid drift of spray and vapors, as this product may injure nearby susceptible plants. Avoid contamination of feed and foodstuffs. Avoid contamination of irrigation ditches or water used for domestic purposes.

Container Disposal: Securely wrap original container in several layers of newspaper and discard in trash.

FOR TOMATOES AND PEPPERS - HOW AND WHEN TO USE

Tomato and pepper plants frequently fail to set blossoms early in the season or during cold weather. This undesirable characteristic can be overcome without regard to variety or temperature by treating with this hormone-like product. Spraying it on the flowers will stimulate the formation of tomatoes or peppers. This is of particular value in localities where prevailing conditions interfere with effective pollination.

Ready to use - No mixing or dilution necessary. Apply as a directed fine spray to blossom and plant. This product aids in the production of larger tomato and pepper crops and earlier harvest.

TOMATOES:

At first bloom spray blossom clusters and plant with a fine spray. Repeat every seven days. Do not make more than 5 applications per season.

PEPPERS:

At first bloom spray entire plant with a fine spray. Repeat every 14 days. Do not make more than 5 applications per season.

Tomato and Pepper Fruit Set Spray promotes fruit set and retention that produces an earlier harvest and bigger yields of meatier,

larger tomatoes and peppers.

NOTICE: This product conforms to its chemical description and is reasonably fit for the purpose stated on the label, when used in accordance with direction under normal conditions of use. Manufacturer is not responsible for the use of this product contrary to the label instructions, or under abnormal conditions, or under conditions not reasonably foreseeable to manufacturer and/or seller, and buyer assumes the risk of any such use.

