



P.422 50534-201

10/19

Jacket

| | | | |
|---|--|--|---|
|  | U.S. ENVIRONMENTAL PROTECTION AGENCY Office of Pesticide Programs Registration Division (M7505C) 401 M St., S.W. Washington, D.C. 20460 | EPA Reg. Number: 50534-201 | Date of Issuance: FEB 19 1993 |
| | | Term of Issuance: Conditional | |
| | | Name of Pesticide Product: Bravo 825 | |
| NOTICE OF PESTICIDE: <u> X </u> Registration <u> </u> Reregistration (under FIFRA, as amended) | | | |
| Name and Address of Registrant (include ZIP Code): ISK Biotech Corp. 5966 Heisley Road P.O. Box 8000 Mentor, OH 44061-8000 | | | |
| Note: Changes in labeling differing in substance from that accepted in connection with this registration must be submitted to and accepted by the Registration Division prior to use of the label in commerce. In any correspondence on this product always refer to the above EPA registration number. | | | |
| <p>On the basis of information furnished by the registrant, the above named pesticide is hereby registered/reregistered under the Federal Insecticide, Fungicide and Rodenticide Act.</p> <p>Registration is in no way to be construed as an endorsement or recommendation of this product by the Agency. In order to protect health and the environment, the Administrator, on his motion, may at any time suspend or cancel the registration of a pesticide in accordance with the Act. The acceptance of any name in connection with the registration of a product under this Act is not to be construed as giving the registrant a right to exclusive use of the name or to its use if it has been covered by others.</p> <p>This product is conditionally registered in accordance with FIFRA sec. 3(c)(7)(A) provided that you:</p> <ol style="list-style-type: none">1. Submit and/or cite all data required for registration/reregistration of your product under FIFRA sec. 3(c)(5) when the Agency requires all registrants of similar products to submit such data; and submit acceptable responses required for reregistration of your product under FIFRA section 4.2. Make the following label changes listed below before you release the product for shipment:<ol style="list-style-type: none">a. Add the phrase, "EPA Reg. No. 50534-201". | | | |
| Signature of Approving Official:  | | Date: | |

20419

b. In the precautionary statements add the following statement.

Prolonged or frequently repeated skin contact may cause allergic reactions in some individuals.

3. Submit one (1) copy of your final printed labeling before you release the product for shipment. Refer to the A-79 enclosure for a further description of final printed labeling.

4. Submit within 8 months from the date of this Notice of Registration an acute inhalation study conducted in accordance with Guideline Reference Number 81-3 with the diluted spray of the formulation of this pesticide product.

If these conditions are not complied with, the registration will be subject to cancellation in accordance with FIFRA section 6(e). Your release for shipment of the product constitutes acceptance of these conditions.

A stamped copy of the label is enclosed for your records.

Cynthia Giles-Parker
Product Manager (22)
Fungicide-Herbicide Branch
Registration Division (H7505C)

Enclosure

30413 Jacter copy

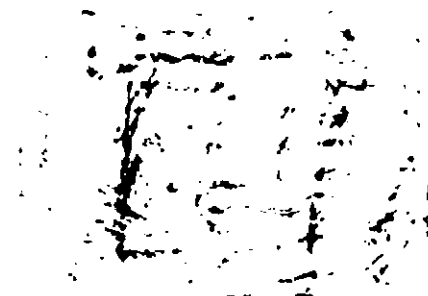
PROPOSED PRODUCT LABEL

Net Contents:

Logo:

BRAVO[®] 825

Agricultural Fungicide
(82.5% Water Dispersible Granules)



| | |
|---|--------|
| Active Ingredient: | |
| Chlorothalonil (tetrachloroisophthalonitrile) | 82.5% |
| Inert Ingredients: | 17.5% |
| Total: | 100.0% |

ACCEPTED
with COMMENTS
In EPA Letter Dated:

FEB 19 1992

Under the Federal Insecticide,
Fungicide, and Rodenticide Act
labeled for the pesticide
under EPA Reg. No.
50534-201

KEEP OUT OF REACH OF CHILDREN

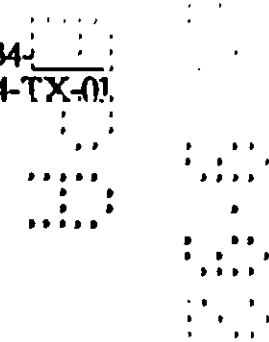
DANGER - PELIGRO

See side panel for additional precautionary statements.

Precaucion al Usuario: Si usted no lee ingles, no use este producto
hasta que la etiqueta haya sido explicado ampliamente.

ISK Biotech Corporation
5966 Heisley Road
Mentor, OH 44061-8000

EPA Reg. No. 50534-
EPA Est. No. 50534-TX-01



A BROAD SPECTRUM AGRICULTURAL FUNGICIDE

Read entire label carefully and use only as directed.

PRECAUTIONARY STATEMENTS

Hazards to Humans and Domestic Animals**DANGER**

Corrosive. Causes irreversible eye damage. Harmful if inhaled. Avoid breathing dust or spray mist. Harmful if absorbed through skin. May be a potential skin sensitizer.

DO NOT get in eyes or on clothing. Wear goggles, face shield or safety glasses, long sleeve shirt, long pants, and gloves. Avoid prolonged contact with skin. Wash thoroughly with soap and water after handling. Remove contaminated clothing and wash before reuse.

DO NOT take internally.

Note to User: This product may produce mild bronchial irritation and temporary irritation of the skin characterized by redness or rash on exposed skin areas. Affected persons should consult a physician.

DO NOT apply this product in such a manner as to directly, or through drift, expose workers or other persons. The area being treated must be vacated by unprotected persons.

FIRST AID:

If swallowed: Call a physician or Poison Control Center. Drink 1 or 2 glasses of water and induce vomiting by touching back of throat with finger. Do not induce vomiting or give anything by mouth to an unconscious person.

If in eyes: Immediately flush eyes with plenty of water and continue for 15 minutes. Seek medical attention for eyes immediately.

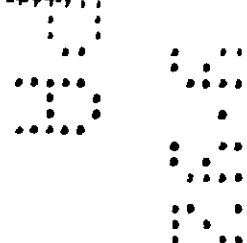
If inhaled: Remove victim to fresh air. If not breathing give artificial respiration, preferably mouth-to-mouth. Get medical attention.

If on skin: Wash with plenty of soap and water. Get medical attention.

Note to physician: Persons having temporary irritation may respond to treatment with antihistamines or steroid creams and/or systemic steroids.

ENVIRONMENTAL HAZARDS

This product is toxic to fish, aquatic invertebrates, and marine/estuarine organisms. Runoff from treated areas may be hazardous to aquatic organisms in neighboring areas. Do not apply directly to water, to areas where surface water is present or to intertidal areas below the mean high water mark. Do not contaminate water when disposing of equipment washwaters. Do not apply when weather conditions favor drift from treated areas. Apply only to areas specified on label.



DIRECTIONS FOR USE

It is a violation of Federal law to use this product in a manner inconsistent with its labeling.

BRAVO 825 is an excellent fungicide when used according to label directions for control of a broad spectrum of plant diseases.

BRAVO 825 can be used effectively in dilute or concentrate sprays. Thorough, uniform coverage is essential for disease control.

Do not use on greenhouse-grown crops.

Do not combine BRAVO 825 in the spray tank with pesticides, surfactants or fertilizers, unless your prior use has shown the combination physically compatible, effective and noninjurious under your conditions of use. Do not combine BRAVO 825 with Dipel 4L, Foil, Triton AG-98, Triton B-1956, Latron B-1956 or Latron AG-98 as phytotoxicity may result from the combination when applied to some crops on this label.

Dipel is a registered trademark of Abbott Laboratories. Foil is a registered trademark of Ecogen Corporation. Triton, Triton B-1956, Latron B-1956 and Latron AG-98 are trademarks of Rohm and Haas Company.

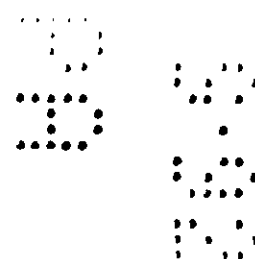
Dosage rates on this label indicate pounds of Bravo 825 per acre, unless otherwise stated. Under conditions favoring disease development the high rate specified and shortest application interval should be used.

The required amount of BRAVO 825 should be added slowly into the spray tank during filling. With concentrate sprays, pre-mix the required amount of BRAVO 825 in a clean container and add to the spray tank as it is being filled. Keep agitator running when filling spray tank and during spray operations.

REENTRY: Note to User: Do not enter treated area to perform hand labor within 24 hours of application unless protective clothing is worn.

Because certain states may require more restrictive reentry intervals for various crops treated with this product, consult your State Department of Agriculture for further information.

Written or oral warnings must be given to workers who are expected to be in a treated area or in an area about to be treated with this product. When oral warnings are given, warnings shall be given in a language customarily understood by workers. Oral warnings must be given if there is reason to believe that written warnings cannot be understood by workers. Oral and written warnings must include the following information: "DANGER". Area treated with BRAVO 825 on (date of application). Do not enter without appropriate protective clothing for 24 hours. In case of accidental exposure, wash exposed area with plenty of water and get medical attention. For further information see 'Precautionary Statements' on the label".



APPLICATION AND CALIBRATION TECHNIQUES FOR SPRINKLER IRRIGATION

Apply this product only through center pivot, motorized lateral move, traveling gun, solid set or portable (wheel move, side roll, end tow, or hand move) irrigation system(s). Do not apply this product through any other type of irrigation system.

Crop injury, lack of effectiveness, or illegal pesticide residues in the crop can result from non-uniform distribution of treated water.

If you have questions about calibration, you should contact State Extension Service specialists, equipment manufacturers or other experts.

Do not apply this product through irrigation systems connected to a public water system. 'Public water system' means a system for the provision to the public of piped water for human consumption if such system has at least 15 service connections or regularly serves an average of at least 25 individuals daily at least 60 days per year.

Controls for both irrigation water and pesticide injection systems must be functionally interlocked, so as to automatically terminate pesticide injection when the irrigation water pump motor stops. A person knowledgeable of the irrigation system and responsible for its operation shall be present so as to discontinue pesticide injection and make necessary adjustments, should the need arise.

The irrigation water pipeline must be fitted with a functional, automatic, quick-closing check valve to prevent the flow of treated irrigation water back toward the water source. The pipeline must also be fitted with a vacuum relief valve and low pressure drain, located between the irrigation water pump and the check valve, to prevent back-siphoning of treated irrigation water into the water source.

Always inject BRAVO 825 into irrigation water after it discharges from the irrigation pump and after it passes through the check valve. Never inject pesticides into the intake line on the suction side of the pump.

Pesticide injection equipment must be fitted with a functional, normally closed, solenoid-operated valve located on the intake side of the injection pump. Interlock this valve to the power system, so as to prevent fluid from being withdrawn from the chemical supply tank when the irrigation system is either automatically or manually turned off.

The pesticide injection pipeline must contain a functional, automatic, quick-closing check valve to prevent the flow of fluid back toward the injection pump. The irrigation line or water pump must include a functional pressure switch which will stop the water pump motor when the water pressure decreases to the point where pesticide distribution is adversely affected.

Spray mixture in the chemical supply tank must be agitated at all times, otherwise settling and uneven application may occur. Do not apply when wind speed favors drift beyond the area intended for treatment.

Posting of areas to be chemigated is required when 1) any part of a treated area is within 300 feet of sensitive areas such as residential areas, labor camps, businesses, day care centers, hospitals, in-patient clinics, nursing homes or any public areas such as schools, parks, playgrounds, or other public facilities not including public roads, or 2) when the chemigated area is open to the public.

Posting must conform to the following requirements. Treated areas shall be posted with signs at all usual points of entry and along likely routes of approach from the listed sensitive areas. When there are no usual points of entry, signs must be posted in the corners of the treated areas and in any other location affording maximum visibility to sensitive areas. The printed side of the sign should face away from the treated area towards the sensitive area. The signs shall be printed in English. Signs must be posted prior to application and must remain posted until foliage has dried and soil surface water has disappeared. Signs may remain in place indefinitely as long as they are composed of materials to prevent deterioration and maintain legibility for the duration of the posting period.

All words shall consist of letters at least 2 1/2 inches tall, and all letters and the symbol shall be a color which sharply contrasts with their immediate background. At the top of the sign shall be the words KEEP OUT, followed by an octagonal stop sign symbol at least 8 inches in diameter containing the word STOP. Below the symbol shall be the words PESTICIDES IN IRRIGATION WATER.

BRAVO 825 may be used through two basic types of sprinkler irrigation systems as outlined in Sections A and B below. Determine which type of system is in place, then refer to the appropriate directions provided for each type.

A. Center Pivot, Motorized Lateral Move and Traveling Gun Irrigation Equipment

For injection of pesticides, these continuously moving systems must use a positive displacement injection pump, of either diaphragm or piston type, constructed of materials that are compatible with pesticides and capable of being fitted with a system interlock and capable of injection at pressures approximately 2-3 times those encountered within the irrigation water line. Venturi applicator units cannot be used on these systems.

Thoroughly Mix recommended amount of BRAVO 825 for acreage to be covered into same amount of water used during calibration and inject into system continuously for one revolution or run. Mixture in the chemical supply tank must be continuously agitated during the injection run. Shut off injection equipment after one revolution or run, but continue to operate irrigation system until BRAVO 825 has been cleared from last sprinkler head.

B. Solid Set and Portable (Wheel Move, Side Roll, End Tow, or Hand Move) Irrigation Equipment

With stationary systems, an effectively designed in-line venturi applicator unit is preferred which is constructed of materials that are compatible with pesticides; however, a positive-displacement pump can also be used.

Determine acreage covered by sprinkler. Fill tank of injection equipment with water and adjust flow to use contents over a thirty to forty-five minute period. Mix desired amount of BRAVO 825 for acreage to be covered with water so that the total mixture of BRAVO 825 plus water in the injection tank is equal to the quantity of water used during calibration, and operate entire system at normal pressures recommended by the manufacturer of injection equipment used, for amount of time established during calibration. Agitation is recommended. BRAVO 825 can be injected at the beginning or end of the irrigation cycle or as a separate application. Stop injection equipment after treatment is completed and continue to operate irrigation system until BRAVO 825 has been cleared from last sprinkler head.

FIELD AND ROW CROPS: Apply BRAVO 825 in sufficient water to obtain adequate coverage of foliage will vary with crop and amount of plant growth. Spray volume usually will range from 20 to 150 (1400 liters per hectare) for dilute sprays and 5 to 10 gallons per acre (50 to 100 liters per hectare) for ground sprays and aircraft applications. Both ground and aircraft methods of application are recommended. Specific directions are given for a crop. Application through sprinkler irrigation systems is not recommended. Specific directions are given for a crop. See application and calibration instructions above.

| CROP | DISEASES | BRAVO 825 RATE PER ACRE | APPLICATION DIRECTIONS |
|--|---|----------------------------|---|
| Bean (Snap) | Rust | 1.25 to 2.7 lb | Use in sufficient water to obtain adequate coverage of foliage during early bloom stage or when disease first appears and repeat at weekly intervals or as necessary. DO NOT apply more than 11 pounds of BRAVO 825 per acre per season. DO NOT apply within 7 days of harvest. Do not graze livestock in treated areas or feed treated plant parts to livestock. |
| | Botrytis blight (gray mold) | 2.7 lb | |
| Beans (Dry) | Rust, Anthracnose, Downy mildew, Cercospora leafspot (blackeye only) | 1.25 to 1.8 lb | Use in sufficient water to obtain adequate coverage of foliage during early bloom stage and repeat at weekly intervals. For use only on beans to be harvested. DO NOT apply within 6 weeks before harvest. Do not graze livestock to graze in treated areas or feed treated plant parts to livestock. |
| Cabbage, Chinese Cabbage, (tight- headed varieties only), Cauliflower, Chinese Broccoli, Brussels Sprouts | Alternaria leaf spot, Downy mildew | 1.4 lb | Use in sufficient water to obtain adequate coverage of foliage after transplants are set in field or at emergence of field-seeded crop, or when conditions favor disease development. Repeat at 7 to 10 day intervals to maintain control. DO NOT apply within 7 days of harvest. |
| | Ring spot (California only) | 1.4 lb | For field-seeded brussels sprouts, begin application at sprout development or when conditions favor disease development. Repeat at 7 to 10 day intervals or as necessary. |

| CROP | DISEASES | BRAVO 825 RATE PER ACRE | APPLICATION DIRECTIONS |
|--|---|--|---|
| Carrot | Cercospora (early) blight, Alternaria (late) blight | 1.4 to 1.8 lb | Use in sufficient water to obtain adequate coverage. Start applications when disease threatens and repeat at 7 to 10 day intervals or as necessary to maintain control. BRAVO 825 may be applied through sprinkler irrigation equipment. See calibration directions preceding this section. |
| Celery | Cercospora (early) blight, Septoria (late) blight, Basal stalk rot (<u>Rhizoctonia solani</u>) | 0.9 to 1.4 lb semiweekly OR 1.8 to 2.7 lb weekly | Use 0.9 to 1.4 lb per acre on a 3 to 5 day spray schedule or 1.8 to 2.7 lb per acre on a 7 day schedule. Start applications when transplants are set in the field. Apply in sufficient water to obtain adequate coverage. DO NOT apply within 7 days of harvest. BRAVO 825 may be applied through sprinkler irrigation equipment. See calibration directions preceding this section. |
| | Pink rot (suppression - 7 Day schedule) | 2.7 lb | |
| | Early blight, Late blight | 1.4 to 1.8 lb per 100 gal. | For celery seedbeds apply 125 gallons per acre twice weekly or as needed to maintain control. Start applications shortly after crop emergence. Use the higher rate under severe disease conditions. |
| Corn(sweet), Corn grown for seed | Helminthosporium leaf blights, Rust | 0.7 to 1.8 lb | Use in sufficient water to obtain adequate coverage. Begin applications when conditions favor disease development and repeat at 4 to 7 day intervals or as required to maintain control. Under severe disease conditions, use 1.4 to 1.8 lb per acre. DO NOT apply within 14 days of harvest. DO NOT apply to sweet corn to be processed. DO NOT allow livestock to graze in treated fields. DO NOT ensile treated corn or use as livestock forage. |

90419

| CROP | DISEASES | BRAVO 825 RATE PER ACRE | APPLICATION DIRECTIONS |
|---|--|--|--|
| Cucurbits: Cucumber, Cantaloupe, Muskmelon, Honeydew melon, Watermelon, Squash, Pumpkin | Target spot, Anthracnose, Downy mildew ----- Cercospora leafspot, Gummy stem blight (black rot), Alternaria leaf blight, Scab, Powdery mildew (<i>Sphaerotheca</i> only) ----- Fruit belly rot (<i>Rhizoctonia</i> <i>solan</i>) | 1.4 to 1.8 lb 1.8 to 2.7 lb 7.6 lb | Use in sufficient water to obtain adequate coverage. Begin applications when plants are in first true leaf stage or when conditions are favorable for disease development. Repeat applications at 7 day intervals. Under severe disease conditions, shorten spray interval. BRAVO 825 may be applied through sprinkler irrigation equipment (solid set, portable wheel move, motorized lateral move or center pivot systems only). See calibration directions preceding this section. ----- Use BRAVO 825 in sufficient water to obtain runoff to soil surface. Make a single application when vines begin to form. BRAVO 825 may be applied through sprinkler irrigation equipment as directed above. |
| Grasses Grown for Seed | Stem rust, Leaf rust, Stripe rust, Septoria leafspot, Glume blotch, Bipolaris and Drechslera leafspots ----- Selenophoma (eyespot) | 0.9 to 1.4 lb 0.9 to 1.8 lb | Use in sufficient water to obtain adequate coverage. Begin applications during stem elongation when conditions favor disease development. Re-apply at flag (top) leaf emergence and repeat applications at 14-day intervals. DO NOT apply within 14 days of harvest. DO NOT allow livestock to graze in treated areas or feed treated plant parts to livestock. |

| CROP | DISEASES | BRAVO 825 RATE PER ACRE | APPLICATION DIRECTIONS | | | | | | | | | | | | |
|---------------------|--|---|--|--|---|---|---------------------|----------------|--------|---------|--------|------------|---------|--------------|--------|
| Mint | Rust, Septoria leafspot | 1.25 lb | Use in sufficient water to obtain adequate coverage, normally 20 to 150 gallons per acre for dilute sprays and 5 to 10 gallons per acre for concentrate ground and aircraft applications. Begin applications when emerging plants are 4-8 inches high. Repeat applications at 7 to 10 day intervals or as necessary to maintain control. DO NOT apply more than 3 times per season. DO NOT apply within 80 days of harvest. DO NOT feed fresh or extracted mint hay from treated fields to livestock. Based on available residue data, use of BRAVO 825 on mint is restricted to Indiana, Michigan and Wisconsin. | | | | | | | | | | | | |
| Onion (dry bulb) | Botrytis leaf blight/blast, Botrytis neck rot (suppression), Purple blotch | 0.9 to 1.3 lb | <p>Use in sufficient water to obtain adequate coverage of tops. BRAVO 825 is recommended for use with disease monitoring systems which adjust fungicide rates and frequency of application according to disease hazard. Apply as follows:</p> <table> <tr> <td></td><td>Low Disease Hazard & Prior to Infection</td><td>Low Disease Hazard & Some Disease Present</td><td>High Disease Hazard</td></tr> <tr> <td>Rate per Acre:</td><td>0.9 lb</td><td>1.25 lb</td><td>1.8 lb</td></tr> <tr> <td>Frequency:</td><td>10 days</td><td>7 to 10 days</td><td>7 days</td></tr> </table> <p>For suppression of neck rot (<i>Botrytis</i> spp.) during storage, a minimum of three weekly applications prior to lifting, using 1.25 to 1.8 lb of BRAVO 825 per acre, is recommended. DO NOT apply within 7 days of harvest.</p> | | Low Disease Hazard & Prior to Infection | Low Disease Hazard & Some Disease Present | High Disease Hazard | Rate per Acre: | 0.9 lb | 1.25 lb | 1.8 lb | Frequency: | 10 days | 7 to 10 days | 7 days |
| | Low Disease Hazard & Prior to Infection | Low Disease Hazard & Some Disease Present | High Disease Hazard | | | | | | | | | | | | |
| Rate per Acre: | 0.9 lb | 1.25 lb | 1.8 lb | | | | | | | | | | | | |
| Frequency: | 10 days | 7 to 10 days | 7 days | | | | | | | | | | | | |

110719

| CROP | DISEASES | BRAVO 825 RATE PER ACRE | APPLICATION DIRECTIONS |
|--------------------------------------|--|----------------------------|---|
| Onion grown for seed, Garlic | Botrytis leaf blight/blast Purple blotch, Downy mildew (suppression) | 1.4 to 2.7 lb | Use in sufficient water to obtain thorough coverage of tops. Begin applications prior to favorable infection periods, and repeat at 7 to 10 day intervals for as long as conditions favor disease. Use the high rate and a 7 day schedule of applications when heavy dew or rain persist. DO NOT apply within 7 days of harvest on garlic. |
| Papaya | Alternaria fruit spot, Anthracnose, Stem end rot | 1.4 to 2.8 lb | Apply with ground equipment only, in sufficient water to obtain adequate coverage of fruit and leaves. Begin treatment when conditions favor development of disease and continue treatments at 14 day intervals until weather conditions no longer favor disease development. DO NOT graze livestock in treated area or feed processing by-products to livestock. |
| Parsnip | Alternaria leafspot, Downy mildew Anthracnose, Botrytis blight (gray mold), Bottom rot (Rhizoctonia) | 1.4 to 1.8 lb | Apply in sufficient water to obtain adequate coverage. Make the first application at the first sign of disease or when conditions are favorable for infection. Continue applications on a 7 to 10 day schedule. DO NOT apply more than 4 times per season or within 10 days of harvest. DO NOT feed treated plant parts to livestock. |
| Passion Fruit (Hawaii only) | Alternaria fruit and leaf spot, Anthracnose, Cercospora fruit spot | 1.8 lb | Apply with ground equipment in sufficient water to obtain adequate coverage of fruit and leaves. Begin applications during late bloom and repeat at 14 day intervals until weather conditions no longer favor disease development. DO NOT apply within 7 days of harvest. DO NOT permit livestock to graze in treated areas or feed treated plant parts to livestock. |

| CROP | DISEASES | BRAVO 825 RATE PER ACRE | APPLICATION DIRECTIONS |
|--------|------------------------------------|----------------------------|--|
| Peanut | Early leafspot (Cercospora), | 0.9 to | <p>Apply in sufficient water for coverage when leaf wetness first occurs or 30 to 40 days after planting; repeat at 10 to 14 day intervals. When conditions favor late leafspot or when rust or web blotch occur, apply 1.4 lb per acre at 10 day intervals for the remainder of the season. DO NOT apply within 14 days of harvest. DO NOT allow livestock to graze in treated areas. DO NOT feed hay or threshings from treated fields to livestock.</p> <p>BRAVO 825 may be applied through sprinkler irrigation equipment. Use 1.4 lb per acre in 1/10 to 1/4 inch of water per acre through solid set, portable wheel move, center pivot, motorized lateral move or traveling gun sprinkler irrigation equipment. See calibration directions preceding this section. It is recommended that applications using this technique be alternated with ground or aerial applications.</p> |
| | Late leafspot (Cercosporidium). | 1.4 lb | |
| | Pepper spot | | |
| | ----- | | |
| | Rust, Web blotch | 1.4 lb | |
| Potato | Early blight, | 0.7 lb | <p>Apply as a banded treatment directed over the foliage, beginning when vines are first exposed and leaf wetness occurs. Repeat applications at 7 to 10 day intervals until vines close, then increase rate as described below.</p> <p>In addition to the early-season applications above, as vines close between rows increase water carrier volume to cover the denser canopy and begin broadcast application patterns. Continue applications at 7 to 10 day intervals. Use the highest registered rate weekly when disease conditions are severe. DO NOT apply more than 11 pounds of BRAVO 825 per acre during each growing season. DO NOT apply within 7 days of harvest.</p> <p>BRAVO 825 may be applied through sprinkler irrigation equipment (solid set, portable wheel move, motorized lateral move or center pivot systems only). DO NOT exceed a 10 day interval between applications when using this technique. See calibration directions preceding this section.</p> |
| | Late blight, | - then - | |
| | Botrytis vine rot | 0.9 to 1.4 lb | |

| CROP | DISEASES | BRAVO 825 RATE PER ACRE | APPLICATION DIRECTIONS |
|----------|---|----------------------------|--|
| Soybean: | Determinate (Southern) Varieties | | Apply in sufficient water to obtain complete coverage, using at least five gallons of water per acre for aerial application. Use the three application program in areas having a history of moderate to severe disease intensity. BRAVO 825 may be applied through sprinkler irrigation equipment. Follow application and calibration directions preceding this section. NOTE: DO NOT exceed total of 3 applications per season. DO NOT apply within 6 weeks of harvest. DO NOT feed soybean hay or threshings from treated fields to livestock. |
| | Anthracnose, Diaporthe pod and stem blight, Frogeye leafspot (<u>Cercospora sojina</u>), Purple seed stain, Cercospora leaf blight (<u>Cercospora kikuchii</u>), | | |
| | Septoria brown spot | 1.4 to 2.2 lb | Two application program- Make the first application at early pod set (R3 stage, when majority of pods are 1/8 to 3/4 inch in length) and the second at beginning of seed formation (R5) which occurs about 14 days later. |
| | | 0.9 to 1.4 lb | Three application program- Make the first application at the beginning of flowering (R1), the second at early pod set (R3) and the third at beginning of seed formation (R5). |
| | Stem canker (<u>Diaporthe</u> <u>phaseolorum</u> var. <u>caulivora</u>) | 0.9 lb | Apply in 10 to 20 gallons of water per acre, as a band treatment directing spray to provide coverage of entire plant. Make the first application at time of emergence of the second trifoliate leaves (V2). If conditions favor stem canker disease make a second and a third application. Make all applications at 10 to 14 day intervals. |

| CROP | DISEASES | BRAVO 825 RATE PER ACRE | APPLICATION DIRECTIONS |
|--|---|----------------------------|---|
| Soybean: | Indeterminate (Northern) Varieties | | Apply in sufficient water to obtain complete coverage, using at least five gallons of water per acre for aerial application. Use the three application program in areas having a history of moderate to severe disease intensity. BRAVO 825 may be applied through sprinkler irrigation equipment. Follow application and calibration directions preceding this section. NOTE: DO NOT exceed total of 3 applications per season. DO NOT apply within 6 weeks of harvest. DO NOT feed soybean hay or threshings from treated fields to livestock. |
| | Anthracnose, | | |
| | Diaporthe pod and stem blight, | | |
| | Frogeye leafspot (<i>Cercospora sojina</i>), | | |
| | Purple seed stain, | | |
| | Cercospora leaf blight (<i>Cercospora kikuchii</i>), | | |
| | Septoria brown spot | 1.4 to 2.2 lb | Two application program - Make the first application when largest pods are 1 to 1-1/2 inches in length and make the second application 14 days later. BRAVO 825 may be co-applied with Benlate*50WP as a tank mix for disease control in indeterminate (northern) soybeans. Use 0.9 lb of BRAVO 825 plus 8 ounces of Benlate 50WP per acre. Make the first application when pods near the top of plants are 1/2 to 1 inch in length and a second application 14 days later. |
| | | 0.9 to 1.8 lb | Three application program - Make the first application one week after first flowering and continue applications at 14 day intervals. |
| ----- | | | |
| *Benlate is a registered trademark of E.I. Dupont de Nemours and Co., Inc. | | | |
| ----- | | | |
| Tomato | FOLIAGE (apply every 7-10 days): | | Apply in sufficient water to obtain adequate coverage. Begin applications when dew or rain occur and disease threatens. Use the highest rate and shortest interval specified when disease conditions are severe. BRAVO 825 may be combined in the spray tank with EPA-registered pesticide products that claim copper as the active ingredient and are labeled for control of bacterial diseases of tomatoes. Check the copper manufacturer's label for specific instructions, precautions and limitations prior to mixing with BRAVO 825. DO NOT use with Copper-Count™ in concentrated spray suspensions. BRAVO 825 may be applied through sprinkler irrigation equipment (solid set or portable wheel move systems only). See calibration directions preceding this section. |
| | Early blight, | 1.3 to | |
| | Late blight, | 1.8 lb | |
| | Gray leaf spot, | | |
| | Gray leaf mold, | | |
| | Septoria leaf spot, | | |
| | Target spot | | |
| | FRUIT (apply every 7-14 days beginning at fruit set): | | |
| | Anthracnose, | 1.8 to | |
| | Alternaria fruit rot (black mold), | 2.75 lb | |
| | Botrytis gray mold, | | |
| | Late blight fruit rot, | | |
| | Rhizoctonia fruit rot | | * Copper-Count is a registered trademark of Mineral Research and Development Corp. |

15 of 19

TREE AND ORCHARD CROPS: Apply BRAVO 825 in sufficient water and with proper calibration to obtain uniform coverage of tree canopy. Application with ground equipment is preferable to aerial application because ground applications generally give better coverage of the tree canopy. If application with ground equipment is not feasible, BRAVO 825 may be applied with aircraft using at least 20 gallons per acre. When concentrate sprays are used or when treating non-bearing or immature trees, the lower rate of BRAVO 825 listed may be used. DO NOT allow livestock to graze in treated areas. The following spray volumes are recommended as gallons of spray per acre:

| CROP | SPRAY VOLUME (Gallons per Acre) | |
|-----------------|---------------------------------------|---|
| Peach, | 20 (concentrate) | |
| Nectarine, | to | |
| Apricot, | 300 (full dilute) | |
| Tart Cherry, | | |
| Plum, | | |
| Prune | | |
| Sweet Cherry | 20 (concentrate) to 400 (full dilute) | |
| Conifers: | <u>Dilute</u> | <u>Concentrate</u> |
| Forest stands | Not used | 10 to 20 (aircraft) |
| Christmas trees | 100 | 10 to 50 (aircraft or ground equipment) |
| Nursery beds | 100 | 5 to 10 (ground equipment only) |

160819

| CROP | DISEASES | BRAVO 825 ACRE | Rate Per 100 GAL* | APPLICATION DIRECTIONS |
|---|--|-------------------|----------------------|---|
| Peach, Nectarine, Apricot, Cherry, Plum, Prune | Leaf curl, Coryneum blight (shothole) | 2.8 to 3.8 lb | 0.9 to 1.25 lb | For best control of both diseases apply at leaf fall in late autumn, using sufficient water and proper sprayer calibration to obtain uniform coverage. When conditions favor high disease levels use the high rate of application and apply once or twice more in mid to late winter before budswell. If the leaf fall application is not practical, application of BRAVO 825 for control of leaf curl may be made at any time prior to budswell the following spring. Where Coryneum blight (shothole) occurs, also apply at budbreak to protect newly emerging leaves and at shuck split to prevent fruit infections. |
| | ----- Brown rot blossom blight, Lacy (russet) scab (plum/prune) | 2.8 to 5.0 lb | 0.9 to 1.25 lb | ----- Use 3.8 to 5.0 lb per acre on trees taller than 20 ft. and 2.8 to 3.8 lb per acre on smaller trees. Make one application at popcorn (red or early white bud) and a second application at full bloom. If weather conditions favor disease development, make an additional application at petal fall. |
| | ----- Cherry leafspot, Peach, Nectarine, Apricot scab | 2.8 to 3.8 lb | 0.9 to 1.25 lb | ----- In addition to the bloom applications listed above, make one application at shuck split. DO NOT apply BRAVO 825 after shuck-split and before harvest. If additional disease control is needed before harvest, use another registered fungicide. For control of cherry leafspot after harvest, make one application to foliage within 7 days after fruit is removed. In orchards with a history of high leafspot incidence, make a second application 10-14 days later. |

17 of 19

| CROP | DISEASES | BRAVO 825 ACRE | Rate Per 100 G.A.* | APPLICATION DIRECTIONS |
|----------|---|-------------------|-----------------------|---|
| Conifers | Swiss needlecast | 2.5 to 5.0 lb | 2.5 to 5.0 lb | Single application technique: In Christmas tree plantations or forest stands make one application in the spring when new shoot growth is 1/2 to 2 inches in length. |
| | Scleroderris canker (pines) Swiss & Rhabdocline needlecasts (Douglas-fir) | 1.25 to 2.5 lb | 1.25 to 2.5 lb | Make the first application in spring when new shoot growth is 1/2 to 2 inches in length. Make additional applications at 3 to 4 week intervals until conditions no longer favor disease development. For use in nursery beds, apply the highest rate specified on a 3 week schedule. |
| | Sirococcus tip blight | 1.8 to 3.2 lb | 1.8 to 3.2 lb | |
| | Rhizosphaera needlecast (spruces), Scirrhia brown spot (pines) | 5.0 lb | 5.0 lb | |
| | Cyclaneusma and Lophodermium needlecasts (pines) | 2.5 to 5.0 lb | 2.5 to 5.0 lb | Apply in early spring prior to budbreak. Repeat applications at approximately 6 to 8 week intervals, until spore release ceases in late fall. Apply monthly during periods of frequent rainfall, and where Lophodermium infections occur during dormancy (Pacific Northwest). During drought periods, applications may be suspended, then resumed upon next occurrence of needle wetness. |
| | Rhabdocline needlecast (Douglas-fir) | 1.4 to 2.5 lb | 1.4 to 2.5 lb | Apply at budbreak and repeat at 3 to 4 week intervals until needles are fully elongated and conditions no longer favor disease development. In plantations of mixed provenance, or when irregular budbreak occurs, apply weekly until all trees have broken bud, then every 3 to 4 weeks as specified above. In nursery beds, use the high rate on a 3 week schedule. |
| | Botrytis seed- ling blight, Phoma twig blight | 1.4 to 2.5 lb | 1.4 to 2.5 lb | Begin applications in nursery beds when seedlings are 4 inches tall and when cool, moist conditions favor disease development. Make additional applications at 7 to 14 day intervals as long as disease favorable conditions persist. |

* Volumetric rates to be used only with full dilute spray volume specified on this label for tree and orchard crops.

PESTICIDE DISPOSAL: Pesticide wastes are toxic. Improper disposal of excess pesticide, pesticide spray or rinsate is a violation of Federal Law. If these wastes cannot be disposed of by use according to label instructions, contact your State Pesticide or Environmental Control Agency, or the Hazardous Waste representative at the nearest EPA Regional Office for guidance.

CONTAINER DISPOSAL: Completely empty bag into application equipment. Then dispose of empty bag in a sanitary landfill, or by incineration, or if allowed by state and local authorities, by burning. If burned, stay out of smoke.

) **WARRANTY AND LIMITATION OF DAMAGES**

Seller warrants that this material conforms to its chemical description and is reasonably fit for the purposes stated on the label when used in accordance with directions under normal conditions of use and Buyer assumes the risk of any use contrary to such directions. SELLER MAKES NO OTHER EXPRESS OR IMPLIED WARRANTY, INCLUDING ANY OTHER EXPRESS OR IMPLIED WARRANTY OF FITNESS OR OF MERCHANTABILITY, AND NO AGENT OF SELLER IS AUTHORIZED TO DO SO EXCEPT IN WRITING WITH A SPECIFIC REFERENCE TO THIS WARRANTY. In no event shall Seller's liability for any breach of warranty exceed the purchase price of the material as to which a claim is made.

✓

)