

ACCEPTED

JUL 22 1985

Under the Federal Insecticide
Fungicide, and Rodenticide Act,
as amended, for the pesticide
registered under
EPA Reg. No. 50534-116

PRODUCT BULLETIN

TUFFCIDE™ 750G

(LOGO)

SDS Biotech Corporation
Agricultural Chemicals Business
7528 Auburn Road, P.O. Box 348
Painesville, Ohio 44077

Fungicide for Use in the
Manufacturing of Mildew Resistant
Portland Cement Grout

PAD-97

TUFFCIDE 750G is a broad-spectrum microbicide for control of mildew. Its high degree of activity and wettable/flowable nature provide excellent performance properties for use in Portland cement systems.

GENERAL DIRECTIONS

It is a violation of Federal law to use this product in a manner inconsistent with its labeling.

Note to User: Technical chlorothalonil may produce temporary allergic side effects characterized by redness of the eyes, mild bronchial irritation and redness or rash on exposed skin areas. Persons having allergic reaction should contact a physician.

DIRECTIONS FOR USE

Add **TUFFCIDE 750G** to dry grout at 0.5 to 2% by weight during the dry blending process, e.g., 1/2 to 2 pounds of **TUFFCIDE 750G** per 100 pounds of dry grout blend. Adequate controls should be employed to prevent dusting during the handling and use of this product.

NOTE: The formulation of the mildew-resistant grout, in which **TUFFCIDE 750G** fungicide manufactured by SDS Biotech Corporation is made to be used, is a development of Tile Council of America, Inc., Princeton, New Jersey, and is the subject of a pending patent application.

TUFFCIDE 750G is a fine powder with a tendency to dust. The following precautions should be used when handling **TUFFCIDE 750G**.

Warranty and Limitation of Damages: Seller warrants that the material conforms to its chemical description and is reasonably fit for the purposes stated on the label, and in accordance with directions under normal conditions of use and Buyer assumes the risk of any use contrary to such directions. Seller makes no other express or implied warranty, including any other express or implied warranty of fitness or of merchantability, and no agent of seller is authorized to do so except in writing with a specific reference to this warranty. In no event shall Seller's liability for any breach of warranty exceed the purchase price of the material as to which a claim is made.

PRECAUTIONARY STATEMENTS

Hazards to Humans and Domestic Animals

Danger

Corrosive, causes severe eye damage. May be a potential skin sensitizer.

Do not get in eyes, on skin, or on clothing. Wear goggles or face shield, rubber gloves, long sleeve shirt, and long pants when mixing, loading and applying this product. Harmful if inhaled. **Do not** breathe dust. Harmful if swallowed or absorbed through the skin. Remove contaminated clothing and wash before reuse.

First Aid: In case of eye contact, flush eyes with water for 15 minutes; get medical attention immediately. In case of skin contact, wash exposed areas of skin with soap and warm water. This product may produce temporary allergic side effects characterized by redness of the eyes, mild bronchial irritation and redness or rash on exposed skin areas. Persons having allergic reaction should contact a physician. **Note to physician:** Persons having allergic reaction respond to treatment with antihistamines or steroid creams and/or systemic steroids. In case of inhalation, remove person to fresh air and get medical attention immediately.

Environmental Hazards

Do not discharge effluent containing this product directly into lakes, streams, ponds, estuaries, oceans or public waters unless this product is specifically identified and addressed in an NPDES permit. **Do not** discharge effluent containing this product into sewer systems without previously notifying the sewage treatment plant authority. For guidance, contact your State Water Board or Regional Office of the Environmental Protection Agency.

STORAGE AND DISPOSAL

Do not contaminate water, food or feed by storage or disposal. Open dumping is prohibited.

Storage: Store in a dry place.

Pesticide Disposal: Pesticide wastes are toxic. Improper disposal of excess pesticide, pesticide formulation or rinsate is a violation of Federal law. If these wastes cannot be disposed of by use according to label instructions, contact your State Pesticide or Environmental Control Agency, or the Hazardous Waste representative at the nearest EPA Regional Office for guidance.

BEST AVAILABLE COPY

352

Container Disposal: Triple rinse (or equivalent). Then offer for recycling or reconditioning, or puncture and dispose of in a sanitary landfill, or incineration, or, if allowed by state and local authorities, by burning. If burned, stay out of smoke.

PACKAGING

TUFFCIDE 760G is shipped in 100 pound net weight polyethylene-lined fiber drums.

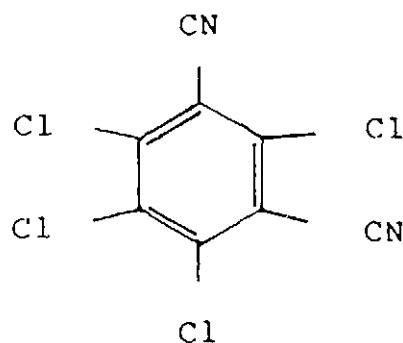
TYPICAL PROPERTIES OF FORMULATION

Appearance	White-gray powder
Active content, %	75
Bulk density, lb/ft ³ @ 20°C	40
lb/gal	5.35
Odor	Slight
pH	5-8.5
Solubility in water, % by wt	0.6 ppm for active ingredient
	Formulation is dispersible.
Specific gravity (H ₂ O = 1)	1.9
Stability	Thermally stable under normal temperature of storage. Chemically stable in alkaline or acidic aqueous media. Stable to ultra-violet radiation.

TYPICAL PROPERTIES OF ACTIVE INGREDIENT

Active ingredient	Tetrachloroisophthalonitrile*
Boiling point, °C at 760 ⁰ mm Hg	>350
Formula, molecular	C ₈ Cl ₄ N ₂

Formula, structural



Melting range, °C	250-251
Molecular Weight	265.9
Vapor pressure, mm Hg @ °C	<0.01 @40
	9.2 @170.4
	17.4 @190.8
	27.3 @211.5
	43.3 @229.5

*U.S. Patents 3,290,353 and 3,331,735
EPA Registration No. 50534-116

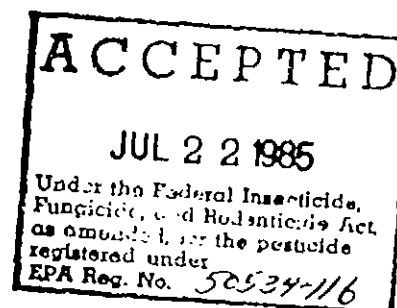
PAD-97
(4/3/85)

PROPOSED LABELING

(FRONT PANEL)

NET CONTENTS 100 POUNDS/45.5 KILOGRAMS

(SDS LOGO)



TUFFCIDETM 750G

FUNGICIDE FOR USE IN THE MANUFACTURE OF
MILDEW RES. STANT PORTLAND CEMENT GROUT

Active Ingredient:

Chlorothalonil (tetrachloroisophthalonitrile*) 75.0%

Inert Ingredients: 25.0%

TOTAL: 100.0%

*Covered under U.S. Patent Nos. 3,290,353; 3,331,735

Keep Out of Reach of Children

DANGER

See side panel for additional precautionary statements

SDS Biotech Corporation
Agricultural Chemicals Business
Painesville, Ohio 44077

EPA Reg. No. 50534-116

EPA Est. No. 35982-TX-1

558

(LEFT PANEL)

TUFFCIDE™ 750G

PRECAUTIONARY STATEMENTS

Hazards to Humans and Domestic Animals

Danger

Corrosive, causes severe eye damage. May be a potential skin sensitizer.

Do not get in eyes, on skin, or on clothing. Wear goggles or face shield, rubber gloves, long sleeve shirt, and long pants when mixing, loading and applying this product. Harmful if inhaled. Do not breathe dust. Harmful if swallowed or absorbed through the skin. Remove contaminated clothing and wash before reuse.

First Aid: In case of eye contact, flush eyes with water for 15 minutes; get medical attention immediately. In case of skin contact, wash exposed areas of skin with soap and warm water. This product may produce temporary allergic side effects characterized by redness of the eyes, mild bronchial irritation and redness or rash on exposed skin areas. Persons having allergic reaction should contact a physician. **Note to physician:** Persons having allergic reaction respond to treatment with antihistamines or steroid creams and/or systemic steroids. In case of inhalation, remove person to fresh air and get medical attention immediately.

Environmental Hazards

Do not discharge effluent containing this product directly into lakes, streams, ponds, estuaries, oceans or public waters unless this product is specifically identified and addressed in an NPDES permit. Do not discharge effluent containing this product into sewer systems without previously notifying the sewage treatment plant authority. For guidance, contact your State Water Board or Regional Office of the Environmental Protection Agency.

GENERAL DIRECTIONS

It is a violation of Federal law to use this product in a manner inconsistent with its labeling.

Note to User: Technical chlorothalonil may produce temporary allergic side effects characterized by redness of the eyes, mild bronchial irritation and redness or rash on exposed skin areas. Persons having allergic reaction should contact a physician.

BEST AVAILABLE COPY

232

DIRECTIONS FOR USE

NOTE: The formulation of the mildew resistant grout, in which **TUFFICIDE 750G** fungicide manufactured by SDS Biotech Corporation is made to be used, is a development of Tile Council of America, Inc., Princeton, N.J. and is the subject of a patent applied for.

Add **TUFFICIDE 750G** to the dry grout at 0.5 to 2% by weight during the dry blending process, e.g., 1/2 to 2 lbs of **TUFFICIDE 750G** per 100 lbs of dry grout blend. Employ adequate controls to prevent dusting during the handling and use of this product.

8-2-72

(RIGHT PANEL)

STORAGE AND DISPOSAL

Do not contaminate water, food or feed by storage or disposal. Open dumping is prohibited.

Storage: Store in a dry place.

Pesticide Disposal: Pesticide wastes are toxic. Improper disposal of excess pesticide, pesticide formulation or rinsate is a violation of Federal Law. If these wastes cannot be disposed of by use according to label instructions, contact your State Pesticide or Environmental Control Agency, or the Hazardous Waste representative at the nearest EPA Regional Office for guidance.

Container Disposal: Triple rinse (or equivalent). Then offer for recycling or reconditioning, or puncture and dispose of in a sanitary landfill, or incineration, or, if allowed by state and local authorities, by burning. If burned, stay out of smoke.

WARRANTY AND LIMITATION OF DAMAGES

Seller warrants that this material conforms to its chemical description and is reasonably fit for the purposes stated on the label when used in accordance with directions under normal conditions of use and Buyer assumes the risk of any use contrary to such directions. Seller makes no other express or implied warranty, including any other express or implied warranty of Fitness or of Merchantability, and no agent of Seller is authorized to do so except in writing with a specific reference to this warranty. In no event shall Seller's liability for any breach of warranty exceed the purchase price of the material as to which a claim is made.

Made in U.S.A.

BEST AVAILABLE COPY