

(LOGO)

SDS Biotech Corporation  
Agricultural Chemicals Business  
7528 Auburn Road, P.O. Box 348  
Painesville, Ohio 44077

**PRODUCT BULLETIN****TUFFCIDE™ 404****Fungicide for Mildew  
Control on Paint Film**

PAD-94

**TUFFCIDE 404** is a broad-spectrum fungicide for control of mildew on paint film. This flowable form of **TUFFCIDE 960** provides excellent performance characteristics when used as a mildewcide in aqueous paint systems only.

**GENERAL DIRECTIONS**

It is a violation of Federal law to use this product in a manner inconsistent with its labeling.

**Note to User:** Technical chlorothalonil may produce temporary allergic side effects characterized by redness of the eyes, mild bronchial irritation and redness or rash on exposed skin areas. Persons having allergic reaction should contact a physician.

**DIRECTIONS FOR USE**

**TUFFCIDE 404** is a 40% active aqueous dispersion of **TUFFCIDE 960**. It can be added in the paint formula during the pigment grind operation, during or after letdown, or post-added to a finished product. To assure a uniform mixture of **TUFFCIDE 404**, gentle mixing is recommended before using. Generally, 10-25 pounds of **TUFFCIDE 404** per 100 gallons of exterior paint are sufficient for effective mildew control in the paint film. Levels of 7.5-10 pounds have been found effective in interior latex paint.

**TUFFCIDE 404** is compatible with latex paints containing zinc oxide.

**TUFFCIDE 404** can be used in acrylic, vinyl-acrylic or polyvinyl acetate latexes.

If an in-can preservative is used in combination with **TUFFCIDE 404**, its compatibility with **TUFFCIDE 404** should be examined first. Studies conducted with **TUFFCIDE 960** have indicated certain preservatives show superior performance in conjunction with **TUFFCIDE 960**. Further information is available from our technical service laboratory personnel.

The following precautions should be observed in handling and using **TUFFCIDE 404**.

**Warranty and Limitation of Damages:** Seller warrants that this material conforms to its chemical description and is reasonably fit for the purposes stated on the label when used in accordance with directions under normal conditions of use and Buyer assumes the risk of any use contrary to such directions. Seller makes no other express or implied warranty, including any other express or implied warranty of fitness or of merchantability, and no agent of seller is authorized to do so except in writing with a specific reference to this warranty. In no event shall Seller's liability for any breach of warranty exceed the purchase price of the material as to which a claim is made.

## PRECAUTIONARY STATEMENTS

### Hazards to Humans and Domestic Animals

#### Warning

Causes eye irritation. May be a potential skin sensitizer.

**Do not** get in eyes, on skin, or on clothing. Wear goggles or face shield, rubber gloves, long sleeve shirt, and long pants when mixing, loading and applying this product. Harmful if inhaled. **Do not** breathe mist. Harmful if swallowed or absorbed through the skin. Remove contaminated clothing and wash before reuse.

**First Aid:** In case of eye contact, flush eyes with water for 15 minutes; get medical attention immediately. In case of skin contact, wash exposed areas of skin with soap and warm water. This product may produce temporary allergic side effects characterized by redness of the eyes, mild bronchial irritation and redness or rash on exposed skin areas. Persons having allergic reaction should contact a physician. **Note to physician:** Persons having allergic reaction respond to treatment with antihistamines or steroid creams and/or systemic steroids. In case of inhalation, remove person to fresh air and get medical attention immediately.

#### Environmental Hazards

**Do not** discharge effluent containing this product directly into lakes, streams, ponds, estuaries, oceans or public waters unless this product is specifically identified and addressed in an NPDES permit. **Do not** discharge effluent containing this product into sewer systems without previously notifying the sewage treatment plant authority. For guidance, contact your State Water Board or Regional Office of the Environmental Protection Agency.

#### STORAGE AND DISPOSAL

**Do not** contaminate water, food or feed by storage or disposal. Open dumping is prohibited.

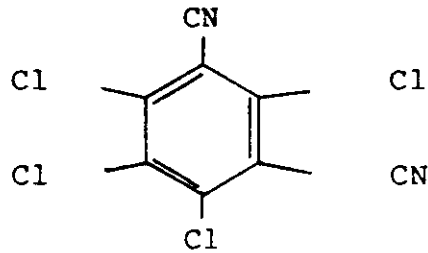
**Storage:** Store in a cool place. Protect from excessive heat.

**Pesticide Disposal:** Pesticide wastes are toxic. Improper disposal of excess pesticide, pesticide formulation or rinsate is a violation of Federal law. If these wastes cannot be disposed of by use according to label instructions, contact your State Pesticide or Environmental Control Agency, or the Hazardous Waste representative at the nearest EPA Regional Office for guidance.

**Container Disposal:** Triple rinse (or equivalent). Then offer for recycling or reconditioning, or puncture and dispose of in a sanitary landfill, or incineration, or, if allowed by state and local authorities, by burning. If burned, stay out of smoke.

**TYPICAL PROPERTIES**

Appearance	Viscous, gray liquid
Active content, %	40.4
Active ingredient	Tetrachloroisophthalonitrile*
Molecular Weight	265.9

**Structural Formula**

Corrosivity to metals	Noncorrosive
Density, lb/gal	10.3
Freezing point, °C	-5
Specific gravity (H <sub>2</sub> O = 1)	1.24
Stability	Thermally stable at normal storage temperatures. Chemically stable in alkaline (below pH 9) or acidic conditions. Stable to UV radiation.

\*U.S. Patents 3,290,353; 3,331,735 and 3,948,636  
EPA Reg. No. 50534-115

**PACKAGING, STORAGE AND HANDLING**

**TUFFCIDE 404** is shipped in 5 and 30 gallon plastic-lined containers. This product may congeal or stratify when exposed to temperatures below its pour point. Should this occur, allow the container to warm to room temperature and mix well before using.

PAD-94

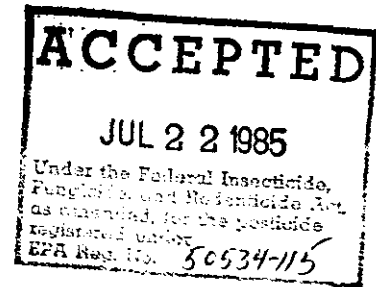
(4/3/85)

**PROPOSED LABELING**

**(FRONT PANEL)**

**NET CONTENTS**

**(SDS LOGO)**



**TUFFCIDE<sup>TM</sup> 404**

**FOR MANUFACTURING USE ONLY  
FUNGICIDE FOR MILDEW CONTROL ON PAINT FILM**

**Active Ingredient:**

Chlorothalonil (tetrachloroisophthalonitrile\*) . . . . . 40.4%

Inert Ingredients: . . . . . 59.6%

**TOTAL:** . . . . . 100.0%

\*Covered under U.S. Patent Nos. 3,290,353; 3,331,735 and 3,948,636

**Keep Out of Reach of Children**

**WARNING**

See side panel for additional precautionary statements.

**SDS Biotech Corporation  
Agricultural Chemicals Business  
Painesville, Ohio 44077**

**EPA Reg. No. 50534-115**

**EPA Est. No. 50534-TX-01**

(LEFT PANEL)

TUFFCIDE™ 404

**PRECAUTIONARY STATEMENTS**

**Hazards to Humans and Domestic Animals**

**Warning**

Causes eye irritation. May be a potential skin sensitizer.

**Do not** get in eyes, on skin, or on clothing. Wear goggles or face shield, rubber gloves, long sleeve shirt, and long pants when mixing, loading and applying this product. Harmful if inhaled. **Do not** breathe mist. Harmful if swallowed or absorbed through the skin. Remove contaminated clothing and wash before reuse.

**First Aid:** In case of eye contact, flush eyes with water for 15 minutes; get medical attention immediately. In case of skin contact, wash exposed areas of skin with soap and warm water. This product may produce temporary allergic side effects characterized by redness of the eyes, mild bronchial irritation and redness or rash on exposed skin areas. Persons having allergic reaction should contact a physician. **Note to physician:** Persons having allergic reaction respond to treatment with antihistamines or steroid creams and/or systemic steroids. In case of inhalation, remove person to fresh air and get medical attention immediately.

**Environmental Hazards**

**Do not** discharge effluent containing this product directly into lakes, streams, ponds, estuaries, oceans or public waters unless this product is specifically identified and addressed in an NPDES permit. **Do not** discharge effluent containing this product into sewer systems without previously notifying the sewage treatment plant authority. For guidance, contact your State Water Board or Regional Office of the Environmental Protection Agency.

**GENERAL DIRECTIONS**

It is a violation of Federal law to use this product in a manner inconsistent with its labeling.

**Note to User:** Technical chlorothalonil may produce temporary allergic side effects characterized by redness of the eyes, mild bronchial irritation and redness or rash on exposed skin areas. Persons having allergic reaction should contact a physician.

### DIRECTIONS FOR USE

This product is for manufacturing purposes only. Refer to Product Bulletin PAD-94 for use directions.

**Note:** Mix contents slowly before using to assure uniform mixture.

**(RIGHT PANEL)**

**STORAGE AND DISPOSAL**

Do not contaminate water, food or feed by storage or disposal. Open dumping is prohibited.

**Storage:** Store in a cool place. Protect from excessive heat.

**Pesticide Disposal:** Pesticide wastes are toxic. Improper disposal of excess pesticide, pesticide formulation or rinsate is a violation of Federal law. If these wastes cannot be disposed of by use according to label instructions, contact your State Pesticide or Environmental Control Agency, or the Hazardous Waste representative at the nearest EPA Regional Office for guidance.

**Container Disposal:** Triple rinse (or equivalent). Then offer for recycling or reconditioning, or puncture and dispose of in a sanitary landfill, or incineration, or, if allowed by state and local authorities, by burning. If burned, stay out of smoke.

**WARRANTY AND LIMITATION OF DAMAGES**

Seller warrants that this material conforms to its chemical description and is reasonably fit for the purposes stated on the label when used in accordance with directions under normal conditions of use and Buyer assumes the risk of any use contrary to such directions. Seller makes no other express or implied warranty, including any other express or implied warranty of Fitness or of Merchantability, and no agent of Seller is authorized to do so except in writing with a specific reference to this warranty. In no event shall Seller's liability for any breach of warranty exceed the purchase price of the material as to which a claim is made.

Made in U.S.A.