



LUCKY

SEVIN^{*}

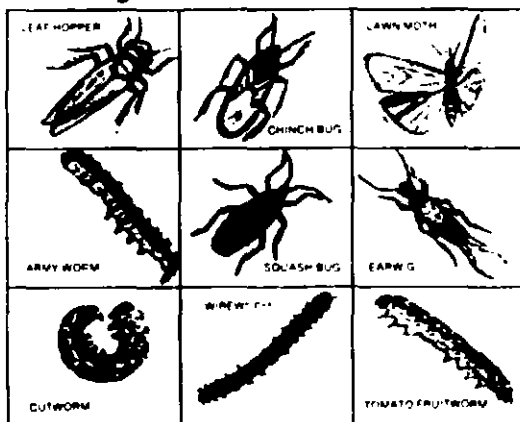
DUST

**USE ON: Fruit, Flowers,
Vegetables and Ornamentals**

**KILLS: Mexican Bean Beetles, Bag
Worm, Tent Caterpillar, Chinch
Bug, Aphid & 50 Other
Varieties of Insects**

ACTIVE INGREDIENTS:

Carbaryl 1-naphthyl N-methyl-
carbamate..... 5.00%
Inert Ingredients..... 95.00%



SEVIN^{*} - Reg. TM of Rhone Poulenc Nederland, B.V. used
under licence by Wilson Laboratories Inc

KEEP OUT OF REACH OF CHILDREN

CAUTION:
SEE SIDE PANELS FOR ADDITIONAL
PRECAUTIONARY STATEMENTS AND
STATEMENT OF PRACTICAL TREATMENT

EPA REG NO 50383-16
EPA EST NO 50383-CN-1

1 LB. Net Wt.

wilson LUCKY SEVIN^{*}

**PRECAUTIONARY STATEMENTS
HAZARDS TO HUMANS AND DOMESTIC ANIMALS**

CAUTION: Harmful if swallowed. Causes eye irritation. Avoid contact with eyes, skin or clothing. Avoid breathing dust. Wash thoroughly after handling. Avoid contamination of food, feed, feeding troughs and water receptacles.

STATEMENT OF PRACTICAL TREATMENT: IF SWALLOWED: Call a physician immediately. Drink 1 or 2 glasses of water and induce vomiting by touching the back of the throat with finger. Never give anything by mouth to an unconscious or convulsing person. **IF IN EYES:** Wash eyes immediately with fresh water for at least 15 minutes. Get medical attention if irritation persists. **IF ON SKIN:** Wash with plenty of soap and water. **IF INHALED:** Remove person from exposure area.

NOTE TO PHYSICIANS: Emergency Information-Carbaryl is a moderate, reversible cholinesterase inhibitor. Atropine is antidotal.

ENVIRONMENTAL HAZARDS: This product is extremely toxic to aquatic and estuarine invertebrates. Do not apply directly to water. Do not contaminate water by cleaning of equipment or disposal of wastes. This product is highly toxic to bees exposed to direct treatment or residues on blooming crops or weeds. Do not apply this product or allow it to drift to blooming crops or weeds if bees are visiting the treatment area.

DIRECTIONS FOR USE

It is a violation of Federal Law to use this product in a manner inconsistent with its labeling

READ ENTIRE LABEL. USE STRICTLY IN ACCORDANCE WITH LABEL PRECAUTIONARY STATEMENTS AND DIRECTIONS, AND WITH APPLICABLE STATE AND FEDERAL REGULATIONS.

LUCKY SEVIN dust kills a wide range of insects both by contact and through the stomach. Apply with a good duster as insects appear. Treat both upper and lower parts of foliage. Repeat at 7 to 10 day intervals or as needed. In general 1 lb. will treat a garden approx. 25' X 25'.

GRAPES: To control Grape Leaf Folder, Grape Leafhopper, Grape Berry Moth, Japanese Beetles. Apply when insects appear, then as needed. Apply before first brood larvae emerge from rolls. Do not apply within 7 days of harvest.

STRAWBERRIES: To control Meadow spittlebug and Strawberry leaf roller. Apply in post bloom and summer sprays, repeat application as insects appear. May be applied up to one day of harvest-1lb per 2000 sq. ft.

BEANS: To control Mexican Bean Beetle-1lb per 1700 sq. ft.
Aphid, Flea Beetle, Bean leaf beetle-1 lb per 1000 sq. ft.

ACCEPTED
JUL 7 1992
Under the Federal Insecticide,
Fungicide, and Rodenticide Act,
as amended, for the pesticide
registered under
EPA Reg. No. 50383-16

Apply when insects appear, then as needed. May be applied up to and including day of harvest. Do not feed treated bean vines to dairy or meat animals.

TOMATOES, EGGPLANT, PEPPERS CUCUMBERS, SUMMER SQUASH: To control Flea beetle, Horn worm, Pickleworm, fruit worm, melon worm, corn borer, fall army worm, cucumber beetle, squash bug, leafhoppers- 1lb per 2000 sq. ft.

Apply when insects first appear, then as needed. May be applied up to and including day of harvest.

POTATOES: To control Colorado potato beetle- 1 lb per 2900 sq. ft. Leafhoppers, flea beetles, lygus bugs-1 lb. per 1700 sq. ft.

Apply when insects first appear, then as needed. May be applied up to and including the day of harvest.

CORN: To control Corn earworm, European corn borer, Japanese beetle, fall army worm-1lb per 2000 sq. ft.

Apply at 2 to 3 day intervals starting when first silk appears, and continue until silk begins to dry, 3 or more application may be needed, depending on lengths of silking, and severity of insects. Timing and Coverage essential for best control. On sweet corn, may be applied to day of harvest. Fodder and Forage, do not apply within 7 days of harvest.

LAWN INSECT CONTROL: To control Chinch bugs, fall army worm, Lawn moths, (sod webworms), Leafhoppers 1lb per 1700 sq. ft. Apply after rain or watering and do not water for at least 2 days after application. Repeat in 2 or 3 weeks if necessary.

ORNAMENTALS AND FLOWERS such as. Roses, Azalea, Gladiolus, etc. - To control Japanese Beetle, Bagworm, Aphid, Blister Beetles, Boxelder bug, Certain Leaf Miners, Elm Leaf Beetle, Flea Beetles, Leafhopper, Leaf rollers, orange tortrix, Periodical cicada, scale insects, Tent caterpillars and exposed thrips, birch leaf miner. Apply when insects first appear. Repeat as needed 1 lb per 625 sq. ft.

STORAGE AND DISPOSAL

STORAGE: Keep pesticide in original container. Do not put into food or drink containers. Avoid contamination of feed and foodstuffs. Store in a cool, dry place, preferably in a locked storage area.

DISPOSAL: PRODUCT: Partially filled bag may be disposed of by securely wrapping original container in several layers of newspaper and discard in trash.

CONTAINER: Do not reuse canister or bag. Discard package in trash.

NOTICE: Buyer assumes all responsibility for safety and use not in accordance with directions.

PRODUCT OF CANADA

Manufactured by
WILSON LABORATORIES INC.
Dundas, Ontario L9H 3H3

Code 7084



0 65797 37084 2