

11 19 103 - 10
Yellow Copy
MAR 27 1992

Mr. Brad Peirce
Wilson Laboratories, Inc.
36 Head Street
Dundas, Ontario L9H 3H3

Dear Mr. Peirce:

Subject: Revised Labeling
Wilson Lucky Sevin 22.5%
EPA Reg. No. 50383-10
Your resubmission of March 3, 1992

The labeling referred to above, submitted in connection with registration under the Federal Insecticide, Fungicide, and Rodenticide Act, as amended, is acceptable provided that you make the labeling change given below before you release the product for shipment bearing the amended labeling.

Revise the Statement of Practical Treatment for oral exposure to read as follows: "IF SWALLOWED: Call a physician immediately. Drink 1 or 2 glasses of water and induce vomiting by touching the back of the throat with finger. Never give anything by mouth to an unconscious or convulsing person."

Submit five (5) copies of your final printed labeling before you release the product for shipment.

A stamped copy of the labeling is enclosed for your records.

Sincerely yours,

DTE

Dennis H. Edwards, Jr.
Product Manager (19)
Insecticide Rodenticide Branch
Registration Division (H7505C)

REGISTERED
WITH COMMENTS
In 1974 Letter D-104

MAR 27 1992

Under the Federal Insecticide,
Fungicide, and Rodenticide Act
as amended, for the pesticide
registered under EPA Reg. No.
50383-10

PRECAUTIONARY STATEMENTS: HAZARD TO HUMANS AND DOMESTIC ANIMALS

CAUTION: Harmful if swallowed or absorbed through the skin. Avoid contact with eyes, skin or clothing. Avoid breathing spray mist. Wash thoroughly after handling. Keep children and animals off treated areas until these areas are dry.

STATEMENT OF PRACTICAL TREATMENT: IF SWALLOWED: Call a physician immediately. Induce vomiting. **IF ON SKIN:** Wash with plenty of soap and water. **IF IN EYES:** Immediately wash eyes with fresh water for at least 15 minutes. Call a doctor if irritation persists. Refer to physician: Carbaryl is a moderate, reversible, cholinesterase inhibitor. Atropine is antidote.

ENVIRONMENTAL HAZARDS: This product is extremely toxic to aquatic and estuarine invertebrates. Do not apply directly to water. Do not contaminate water by cleaning of equipment or disposal wastes. This product is highly toxic to bees exposed to direct treatment or residues on blooming crops or weeds. Do not apply this product or allow it to drift to blooming crops or weeds if bees are visiting the treatment area.

USE PRECAUTIONS, READ ALL LABEL DIRECTIONS BEFORE USING. USE ONLY FOR CLAIMS LISTED AND ONLY AS SPECIFIED ON THE LABEL.

This product is highly toxic to bees exposed to direct treatment or residues on crops and may kill bees in substantial numbers. Do not use when bees are on plants or when they are visiting the treated area. Before applying, wear long-sleeved shirts and long pants and use eye protection. Do not apply this product or allow it to drift to blooming crops or weeds if bees are visiting the treatment area.

To avoid possible injury on tender foliage do not apply when foliage is wet or when sun or excessive humidity is expected during the next 2 days. SEVIN is available under highly alkaline conditions. Do not use with Lime, Bordeaux, Lime-Sulfur, Calcium Lime Sulfonates or other alkaline materials. SEVIN has been used without plant injury with common insecticides and fungicides, except where residues have contained a number of pesticides, or under adverse conditions such as high humidity, drought, improper fertilization, etc. Do not combine with non-soluble liquids, wettable powders, emulsions or solutions (or with any other other pesticide) unless previous use of the mixture has proven compatible and safe in tests. Compatibility can be checked by water in your locality or ingredients in other products. Do not apply if physically incompatible. SEVIN does not control Spider Mites but is compatible with common acaricides.

In order that pesticide residues on food and crop crops will not exceed tolerances established by the Federal Food and Drug Administration, use only at recommended rates and intervals and do not apply closer to harvest than specified. Do not apply or allow to drift to areas occupied by unprotected humans or beneficial animals or onto adjoining food crops.

Consult Agricultural Extension Service or State Agricultural Experiment Stations for additional information, as the timing, number and rate of applications will vary with local conditions.

EPA REG. NO. 56383-10
EPA EST. NO. 56383-CR-1

CODE 7244



DIRECTIONS FOR USE: It is a violation of Federal Law to use this product in a manner inconsistent with its labeling.

STORAGE AND DISPOSAL

STORAGE: Keep pesticide in original containers. Do not put concentrate or dilute into food or drink containers. Avoid contamination of food and feedstuffs. Store in a cool, dry place, preferably in a locked storage area. Do not store diluted spray.
DISPOSAL: PESTICIDE: Pesticide material waste may be disposed by securely wrapping original container in several layers of newspaper and discard in trash. **CONTAINER:** Do not reuse empty bottle. Rinse thoroughly before discarding in trash.
NOTICE: Buyer assumes all responsibility for safety and use not in accordance with directions.

BEFORE USING MIX CONTENTS THOROUGHLY - STIR OR ROLL! Pour recommended amount of the material into empty filled spray tank. Add balance of water. Mixture application during mixing and spraying operations. Do not allow mixture to stand. Use a screen not finer than 50 mesh in spray system. Unless otherwise specified, application can be made on the day of harvest if directions for use on the crops are followed.
VEGETABLE CROPS: Unless otherwise specified, rates are in terms of SEVIN 2 FLOWABLE per 1000 sq. ft. in sufficient water for thorough coverage. Where a dosage range is indicated on vegetables, use lower rate on young plants; higher rate on mature plants. Apply when insects or their damage appear and repeat at 7 to 14 day intervals or as necessary unless shorter interval is specified.

PERENNIALS, FERTILIZERS, SOYBEANS, PEPPERS: Colorado Potato Beetle, Flea Beetle, Leafhoppers, use 2 to 3 Tbsp. European Corn Borer, Fall Armyworm, Lace Bug, Silver Bug, Greenish Plant Bug, Tomato Pinworm, Tomato Hornworm, use 3 to 6 Tbsp. Cucumber (on Potato, Tomato, Eggplant) use 4 Tbsp.
CUCUMBERS, MELONS, PUMPKINS, SQUASH: Mosquito, Flea Beetle, use 2 to 3 Tbsp. Cucumber Beetle, Flea Beetle, Leafhoppers, Squash Bug, use 3 Tbsp. Avoid excessive applications. To avoid possible injury to tender foliage, do not apply when temperature is over 85° or when rain or excessive humidity is expected during the next 2 days.

GARDEN PEAS: Colorado Potato Beetle, Leafhoppers, use 3 Tbsp. Do not apply within 3 days of harvest.
BEANS: GREEN, LIMA, SHADY: Mexican Bean Beetle, Flea Beetle, use 2 Tbsp. Bean Leaf Beetle, Flea Beetle, Flea Beetle, Japanese Beetle, Leafhopper, Velvet Bean Caterpillar, Mexican Bean Caterpillar, use 3 Tbsp. Armyworm, Caterpillar, Corn Earworm, Silver Bug, Greenish Plant Bug, use 3 to 4 Tbsp.

ORNAMENTAL PLANTS, FLOWERS, SHRUBS AND SHADE TREES: Rose Curculionid, Glasswing, Zebra, Chrysanthemum Leaf, Arter Virus, Juniper, Hydrangea, Anemone, Elm, Magnolia, Oak, Dogwood, Birch and Pines. (Do not use on Beech) Apply 2 qt. per 100 sq. ft. Water (4 level scoops) full per gal) when insects or their damage appear. Repeat weekly or as needed to control: Apple Aphid, Bagworm, Birch Leaf Miner, Boxelder Beetle, Broadwing Bug, Box Wood Leaf Miner, Elm Leaf Apher, Elm Leaf Beetle, Flea Beetle, Gypsy Moth, Japanese Beetle, June Beetle, Lace Bug, Leafhopper, Leaf Miner, Milkweed, Milkweed Caterpillar, Oak Leaf Miner, Orange Tortix, Pearleaf Canker, Plum Bug, Plum Caterpillar, Pyralis, Rose Aphid, Rose Apher, Rosehedge, Scale insects, Saw Caterpillar, Silver Bug, Three Spined Wasp, Willow Leaf Beetle.
LARVAE: Ate, Cuckoo Bug, Earwig, Fall Armyworm, Flea, Leafhoppers, Mosquitoes, Cut Worms (Lace Moth), Millipede - Apply 1/4 qt. in 15 to 20 gal. water for each 100 sq. ft. of established lawn area. Use garden hose sprayer or pressure type equipment and apply full water volume to insure good penetration of turf. For best results, water lawn and apply immediately after sun is returning. Repeat in 2 to 3 weeks if necessary.

NOTE: Keep children and pets off treated areas until the material is washed off the soil and grass a day.

PRODUCT OF CANADA

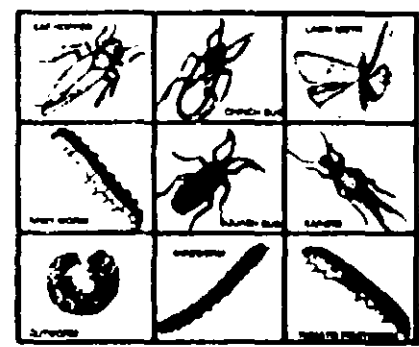
Manufactured by:
WILSON LABORATORIES, INC.
DUNDAS, ONTARIO L9M 3A3

LUCKY **wilson**

SEVIN

22.5%

KILLS GYPSY MOTH
and other garden insects



ACTIVE INGREDIENTS:
Carbaryl (1-naphthyl N-methyl-carbamate) 22.5%
INERT INGREDIENTS 77.5%
Contains 2 lbs SEVIN per gallon 100.0%

Keep out of
CAUTION
See side panel
precautions

1 QUART (32 FLUID OUNCE)

BEST AVAILABLE COPY