

PRECAUTIONARY STATEMENTS

HAZARDS TO HUMANS AND DOMESTIC ANIMALS

CAUTION

Harmful if swallowed. May cause eye irritation. Avoid eye contact. Wash thoroughly after handling. Reapply Bor-Axe as necessary. Any powder visible after application must be brushed into cracks and crevices or removed. Do not use in edible product areas of food-handling establishments, restaurants or other areas where food is commercially prepared or processed. Do not use in serving areas while food is exposed. Avoid contamination of feed and foodstuffs.

DISPOSAL

Do not reuse empty container. Wrap container and place in trash collection.

NOTICE

Seller makes no warranty, expressed or implied concerning the use of this product other than indicated on the label. Buyer assumes all risk of use and/or handling of this material when such use and/or handling is contrary to label instructions.

AB Tri-State Pest Control

BOR-AXE

KILLS

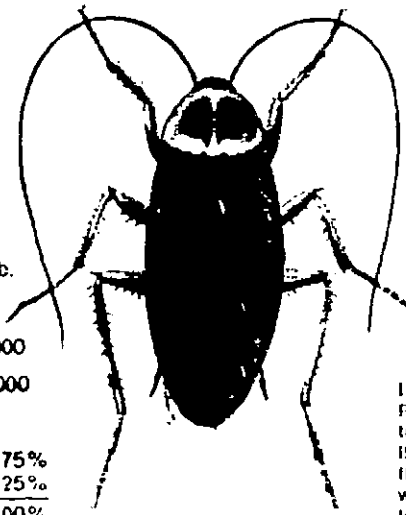
- Roaches
- Ants
- Silverfish

Net Contents 1 lb.

EPA EST. No. 000000

EPA REG. No. 000000

Active Ingredient:
Orthoboric Acid 75%
Inert Ingredients 25%
100%



CAUTION

KEEP OUT OF REACH OF CHILDREN. See other precautions on this label.

STATEMENT OF PRACTICAL TREATMENT

Immediately contact Physician or Poison Control Center if swallowed. If eye contact occurs, flush eyes with plenty of water. Get medical attention if irritation persists.

KILLS ROACHES

Mfg by AB Tri-State Pest Control
Fayetteville, AR 72701

DIRECTIONS FOR USE
It is a violation of Federal Law to use this product in a manner inconsistent with its labeling.

FOR CONTROL OF COCKROACHES IN BUILDINGS

Apply BOR-AXE into cracks and crevices behind stoves, cabinets, sinks, refrigerators, dishwashers, on water pipes and at any holes in the floor or baseboards. Remove all lower cabinet drawers in kitchen, bathrooms and closets and apply BOR-AXE liberally into drawer walls.

The average 9 room house will require approximately one pound of BOR-AXE, with an additional pound for the garage and basement for a thorough treatment.

FOR CONTROL OF COCKROACHES IN SEWERS

Apply Bor-Axe at a rate of 1 lb. per sewer manhole.

FOR USE IN:

- Homes
- Apartments
- Hotels
- Hospitals
- Sanitary Sewers
- Restaurants
- Commercial Buildings
- Grocery Stores

119209-1