

11
A.E.C. - 9.23.87
7-1-87

professional pet products

Flea & Tick Home & Carpet Power Spray

To Kill Fleas, Ticks and Roaches

ACTIVE INGREDIENTS:

*1% Resmethrin 15-phenylmethyl-3-furanyl methyl 2, 2-dimethyl-3-(2-methylpropoxy) cyclopropane-carboxylate..... 0.200% w/w
 80-11-ara-Alcethin 15-yl homolog of Chlorin B..... 0.150%
 Inert ingredients..... 99.650%

100.000% w/w

* Cis/trans isomers ratio: max 30% cis and min 70% trans.

U.S. Patent Nos. 3,465,007 and 3,547,928

* Penick's SBP-1382® brand of Resmethrin Insecticide, Penick Corp., 1050 Wall Street West, Lynchburg, NJ 07071.

8 Bioallethrin.

SHAKE WELL BEFORE USING

KEEP OUT OF REACH OF CHILDREN
CAUTION

PRECAUTIONARY STATEMENTS

HAZARDS TO HUMANS CAUTION

Avoid contact with eyes, skin or clothing. Harmful if swallowed, inhaled or absorbed through the skin. Avoid breathing spray mist. Cover or remove exposed foods. Avoid contamination of cooking utensils and food preparation surfaces. Cover fish aquariums before spraying. Do not use on edible crops.

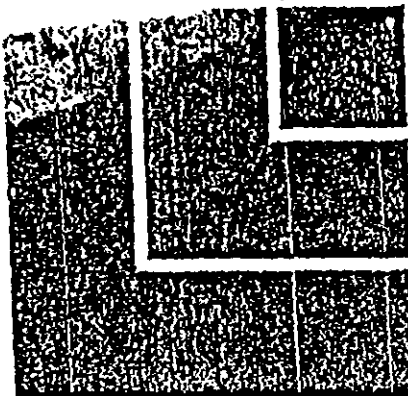
FIRST AID: In case of contact, immediately flush eyes and skin with plenty of water. Get medical attention if irritation persists.

PHYSICAL OR CHEMICAL HAZARDS: Contents under pressure. Do not puncture. Do not use near heat or open flame. Exposure to temperature above 130°F. may cause bursting.

EPA REG. NO. 48668-3

Sold by EPA EST. NO. 7056-TX-1

professional pet products, Inc., Miami, Florida 33172



professional pet products

FLEA & TICK Home & Carpet Power Spray

To Kill Fleas, Ticks and Roaches

with .20% Resmethrin and .15%
Bioallethrin (see panel to left)

SHAKE WELL BEFORE USING

Net Weight: 11.5 oz.

ppp

Product No. 0180

DIRECTIONS FOR USE

It is a violation of Federal law to use this product in a manner inconsistent with its labeling.

Food Areas: Food should be removed or covered during treatment. All food processing surfaces should be covered during treatment or thoroughly cleaned before using. When using this product in these areas, apply only when the facility is not in operation.

STORAGE:

Keep in locked storage area.

CONTAINER DISPOSAL:

Replace cap and discard container in trash.

SHAKE WELL BEFORE EACH

USE. Remove protective cap. Aim spray opening away from person. Push button to spray.

INDOORS: For use in household, commercial and institutional buildings.

TO KILL FLEAS, TICKS AND ROACHES ON PREMISES:

Spray room and kennel thoroughly. Reach all cracks and crevices. To reduce reinfestation, thoroughly spray the animals bedding and other resting areas until the surface is slightly moist. Treat these areas at the rate of two seconds per linear foot at a distance of 12 to 18 inches. Also spray entire inside surface of dog houses. **REPEAT AS NECESSARY,** thoroughly spraying floors, cracks, crevices and bedding. Hit as many insects as directly as possible.

WARRANTY STATEMENT

Our recommendations for use of this product are based upon tests believed to be reliable. The use of this product being beyond the control of the manufacturer, no guarantee, expressed or implied, is made as to the effects of such or the results to be obtained if not used in accordance with directions or established safe practice. The buyer must assume all responsibility, including injury or damage, resulting from its misuse as such, or in combination with other materials.

BEST AVAILABLE COPY

ACCEPTED
MAR 4 1987
Insecticide,
Fungicide, and
Herbicide
for the products
of the
48668-3