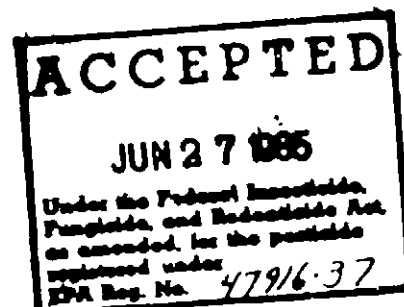




TRIPHENYLTIN HYDROXIDE
A FUNGICIDE FOR FORMULATING USE



ACTIVE INGREDIENT:

Triphenyltin hydroxide..... 95%

INERT INGREDIENTS..... 5%

TOTAL 100%



KEEP OUT OF REACH OF CHILDREN

DANGER - POISON



STATEMENT OF PRACTICAL TREATMENT

IF ON SKIN: Wash with plenty of soap and water.
IF INHALED: Remove victim to fresh air. If not breathing, give artificial respiration, preferably mouth-to-mouth. Get medical attention.
IF IN EYES: Flush with plenty of water. Call a physician.
IF SWALLOWED: Do not induce vomiting. Drink promptly a large quantity of milk, egg whites, gelatin solution, or if these are not available, drink large quantities of water. Call a physician or Poison Control Center.

DIRECTIONS FOR USE

FOR FORMULATION INTO END-USE FUNGICIDE PRODUCTS INTENDED FOR USE ON PECAN TREES, PEANUTS, CARROTS, POTATOES, SUGAR BEETS, AND TOBACCO, OR INSECTICIDE PRODUCTS INTENDED FOR USE AS SPIDER MITE SUPPRESSANTS.

For additional information in the preparation of end-use products, refer to Technical Bulletin No. 1.

HAZARDS TO HUMANS AND DOMESTIC ANIMALS

DANGER: Fatal if inhaled. Corrosive, causes irreversible eye damage. May be harmful or fatal if swallowed or absorbed through the skin. Do not get in eyes or on skin. Do not breathe dust, vapor, or spray mist. When handling either products containing TPTH or spray-diluted mixtures, wear protective clothing (long pants, long sleeve shirt, impermeable gloves, boots, and a pesticide respirator jointly approved by the Mining Enforcement and Safety Administration and the National Institute for Occupational Safety and Health). When handling the concentrated products, wear a face shield. Wash thoroughly with soap and water after handling and before eating or smoking. Remove contaminated clothing and wash before reuse. Do not enter treated areas for at least 24 hours after treatment.

The United States Environmental Protection Agency has determined that triphenyltin hydroxide causes birth defects in laboratory animals. Exposure to triphenyltin hydroxide during pregnancy should be avoided.

ENVIRONMENTAL HAZARDS

This pesticide is toxic to fish and wildlife. Do not discharge into lakes, streams, ponds, estuaries, oceans or public waters unless this product is specifically identified and addressed in a NPDES permit. Do not discharge effluent containing this product into sewer systems without previously notifying the sewage treatment plant authority. For guidance, contact your State Water Board or Regional Office of the Environmental Protection Agency.

STORAGE AND DISPOSAL

Do not contaminate water, food, or feed by storage or disposal.

PESTICIDE DISPOSAL: Pesticide wastes are acutely hazardous. Improper disposal of excess pesticide, spray mixture, or rinsate is a violation of Federal law. If these wastes cannot be disposed of by use according to label instructions, contact your State Pesticide or Environmental Control Agency, or the Hazardous Waste representative at the nearest EPA Regional Office for guidance.

CONTAINER DISPOSAL: Completely empty line by shaking and tapping sides and bottom to loose clinging particles. Empty residue into application equipment. Then dispose of liner in a sanitary landfill or by incineration, if allowed by State and local authorities. If drum cannot be reused, dispose of in the same manner.

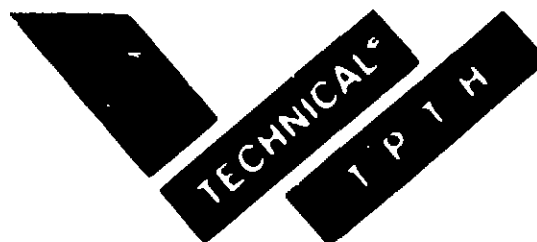
NET WEIGHT POUNDS (Kilograms)
EPA Reg. No. 47916-37 EPA Est. No. 47916-AL-02

Manufactured by:



P. O. BOX 450, MONTROSE, ALABAMA 36553 U.S.A.

TECHNICAL BULLETIN NO. 1



ACCEPTED

JUN 27 1985

Under the Federal Insecticide,
Fungicide, and Rodenticide Act,
as amended, for the pesticide
registered under
EPA Reg. No. 47916-37

WESLEY TECHNICAL TRIPHENYLTIN HYDROXIDE PRODUCT USE RECOMMENDATIONS

WESLEY Technical Triphenyltin Hydroxide is prepared to be used as the active ingredient in wettable powder, flowable and water dispersible granule formulations. These formulations have demonstrated efficacy in controlling various organisms causing plant diseases (i.e. Cercospora, Phytophthora, Alternaria, and Venturia) on crops such as sugar beets, potatoes, peanuts, carrots, and pecans.

Pre-weigh and stage all ingredients in a clean area adjacent to the batching station. Into an operating double ribbon blender or equivalent mixing apparatus, add ingredients in the following order:

1. Diluent or absorbent
2. Triphenyltin Hydroxide Technical
3. Wetting agent, tackifier, or binder
4. Anti caking agent
5. Thickening agent (viscosity adjustment)

Continue to blend for a minimum of 15 minutes after the addition of the last ingredient. If one of the ingredients is a liquid, it is advisable to use a double blender arrangement with an attrition mill between the blenders. Package finished product.

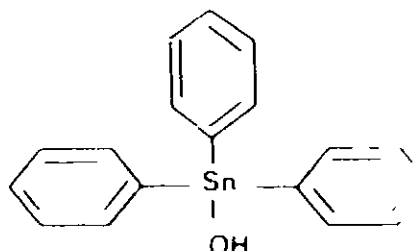
Because triphenyltin hydroxide is toxic via oral, dermal, ocular, and inhalation routes, proper precautions should be taken in accordance with the Material Safety Data Sheet.

WESLEY TECHNICAL TRIPHENYLTIN HYDROXIDE

CHEMICAL COMPOSITION:

Triphenyltin hydroxide

STRUCTURAL FORMULA:



MOLECULAR FORMULA:

 $C_{18}H_{15}SnO$

MOLECULAR WEIGHT:

367.02

ASSAY:

95% Triphenyltin hydroxide minimum

PHYSICAL FORM:

Powder

COLOR:

Off white

STABILITY:

May be stored indefinitely at room temperature in
closed containers



wesley industries, inc.

P. O. BOX 490, MONTROSE, ALABAMA 36559 U.S.A.

TECHNICAL BULLETIN NO. 1

WESLEY TECHNICAL TRIPHENYLTIN HYDROXIDE

PRECAUTIONARY INFORMATION



KEEP OUT OF REACH OF CHILDREN

DANGER - POISON



STATEMENT OF PRACTICAL TREATMENT

- IF ON SKIN:** Wash with plenty of soap and water.
- IF INHALED:** Remove victim to fresh air. If not breathing, give artificial respiration, preferably mouth-to-mouth. Get medical attention.
- IF IN EYES:** Flush with plenty of water. Call a physician.
- IF SWALLOWED:** Do not induce vomiting. Drink promptly a large quantity of milk, egg whites, gelatin solution, or if these are not available, drink large quantities of water. Call a physician or Poison Control Center.

HAZARDS TO HUMANS AND DOMESTIC ANIMALS

DANGER: Fatal if inhaled. Corrosive, causes irreversible eye damage. May be harmful if swallowed or absorbed through the skin. Do not get in eyes or on skin. Do not breathe dust, vapor, or spray mist. When handling either products containing TPTH or spray-diluted mixtures, wear protective clothing (long pants, long sleeve shirt, impermeable gloves, boots, and a pesticide respirator jointly approved by the Mining Enforcement and Safety Administration and the National Institute for Occupational Safety and Health). When handling the concentrated products, wear a face shield. Wash thoroughly with soap and water after handling and before eating or smoking. Remove contaminated clothing and wash before reuse. Do not enter treated areas for at least 24 hours after treatment.

The United States Environmental Protection Agency has determined that triphenyltin hydroxide causes birth defects in laboratory animals. Exposure to triphenyltin hydroxide during pregnancy should be avoided.

ENVIRONMENTAL HAZARDS

This pesticide is toxic to fish and wildlife. Do not discharge into lakes, streams, ponds, estuaries, oceans or public waters unless this product is specifically identified and addressed in a NPDES permit. Do not discharge effluent containing this product into sewer systems without previously notifying the sewage treatment plant authority. For guidance, contact your State Water Board or Regional Office of the Environmental Protection Agency.



wesley industries, inc.

P. O. BOX 490, MONTROSE, ALABAMA 36559 U.S.A.