

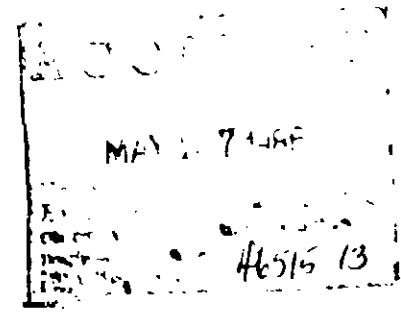
46515 13 P.M.C.  
1 4

READY-TO-USE

SUPER K-GRO

HOME PEST

INSECT CONTROL



\*Kills: Roaches, Fleas, Spiders  
Brown Dog Ticks, Ants, Carpet  
Beetles, Silverfish, Earwigs  
and Other Listed Pests.

\*Contains DURSBAN\* - A Professional  
Strength Formula for Do-It-Yourself  
Pest Control

Active Ingredients:

\*Chlorpyrifos [0,0-diethyl 0- (3,5,6-  
trichloro - 2 - pyridyl) phosphorothioate]..... 0.50%

Inert Ingredients: ..... 99.50%

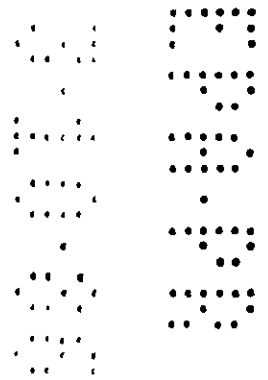
\*DURSBAN is a registered Trademark of the Dow Chemical Co.

KEEP OUT OF REACH OF CHILDREN

CAUTION

See back panel for additional precautionary statements. Read entire label.

NET CONTENTS 1 GALLON



1

PRECAUTIONARY STATEMENTS  
HAZARDS TO HUMANS & DOMESTIC ANIMALS

CAUTION: May be harmful if swallowed. Avoid contact with skin, eyes and clothing. Avoid breathing vapors or spray mist. Do not allow spray to contact food, feedstuffs or water supplies. Thoroughly wash dishes and food handling utensils with soap and water if they become contaminated with this product. Do not allow children or pets to contact treated surfaces until spray has dried. Remove pets and cover fish aquaria before spraying. Do not apply this product in conduits, motor housings, junction and switch boxes or other electrical equipment because of possible shock hazard. Do not use in food processing plants, restaurants or other areas where food is commercially processed or prepared.

STATEMENT OF PRACTICAL TREATMENT

IF SWALLOWED: Call a physician or Poison Control Center immediately. Drink 1 or 2 glasses of water and induce vomiting by touching the back of the throat with finger. Do not induce vomiting or give anything by mouth to an unconscious person.

IF ON SKIN: Remove contaminated clothing and immediately wash affected areas with plenty of soap and water. Call a physician if irritation develops.

IF IN EYES: Flush eyes with plenty of water. Call a physician if irritation persists.

NOTE TO PHYSICIAN: Chlorpyrifos is a cholinesterase inhibitor. Treat symptomatically. Atropine only by injection is antidotal.

EMERGENCY INFORMATION - Call 1-800/858-7378.

ENVIRONMENTAL HAZARDS

This product is toxic to fish, birds and other wildlife. Do not apply directly to water. Do not contaminate water by cleaning of equipment or disposal of wastes.

PHYSICAL OR CHEMICAL HAZARDS

Do not use or store near heat or open flame.

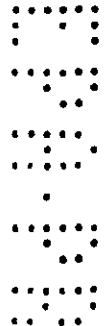
NOTICE: Buyer assumes all responsibility for safety and use not in accordance with directions.

MANUFACTURED IN U.S.A. FOR K-MART CORPORATION, TROY, MICHIGAN 48064.

REGISTERED AND MANUFACTURED BY CELEX CORPORATION, PLYMOUTH, MICHIGAN 48170.

EPA Reg. No. 46515-13

EPA Est. No. 46515-MI-1



READ ENTIRE LABEL. USE STRICTLY IN ACCORDANCE WITH LABEL CAUTIONS AND DIRECTIONS.

DIRECTIONS FOR USE: It is a violation of Federal law to use this product in a manner inconsistent with its labeling.

Super K-Gro Home Pest Insect Control kills many insects fast. Kills Roaches (including strains resistant to other insecticides) for up to 4 weeks.

HOW TO USE: SHAKE WELL BEFORE USING. Hold the container in an upright position and adjust the nozzle tip to give desired spray pattern. Spray infested surfaces until wet. When possible, spray directly on pests. Repeat treatments as needed. Do not spray on desirable plants.

FOR CONTROL OF ROACHES, ANTS, SILVERFISH, CRICKETS, CENTIPEDES, MILLIPEDES, CLOVER MITES, FIREBRATS and SPIDERS (Indoors) - Thoroughly apply under and behind sinks, stoves, refrigerators, cabinets, plumbing and baseboards. Spray areas where insects hide, including dark corners of rooms and cracks in walls and floors. FOR ANTS - apply to ant trails, around doors, windows or wherever these pests may enter the home.

FOR CONTROL OF FLEAS and BROWN DOG TICKS (Indoors) - Thoroughly apply to infested areas, such as pet beds and resting quarters, nearby cracks and crevices, along baseboards, windows, door frames and localized areas of floors where pests may be present. Old pet bedding should be removed and replaced with clean, fresh bedding after treatment of pet area.

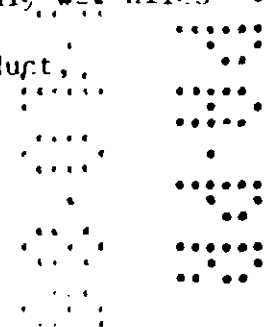
DO NOT TREAT PETS WITH THIS PRODUCT. To control the source of your flea infestation, treat your pets with a product made and registered for application to animals.

FOR CONTROL OF CARPET BEETLES (Indoors) - Apply as a spot treatment. Spray along baseboards and edges of carpeting, under carpeting, rugs and furniture, in closets, on shelving and wherever these insects are seen.

FOR CONTROL OF FLIES, MOSQUITOS, WASPS AND HORNETS (Outdoors) - Use as an aid in repelling these insects. Spray outside surfaces of screens, doors, window frames or wherever these insects may enter the home. Also treat areas on porches, in garages and other places where these insects appear.

FOR CONTROL OF FLEAS, BROWN DOG TICKS, CRICKETS, EARWIGS and ANTS (Outdoors) - For treatments of these insects in outdoor areas where there are weeds or bushy, non-crop areas, spray infested areas thoroughly. FOR ANTS - thoroughly wet hills and runways.

OTHER: Should you have any questions concerning the use of this product, call 313/459-4200.



## DIRECTIONS FOR USE OF TRIGGER SPRAYER

## PRIMING SPRAYER AND STRAIGHTENING HOSE

- 1) Before placing sprayer hose in the bottle, open the adjustment nozzle fully. Submerge the sprayer head and hose in warm water for 5 minutes to soften the hose. Squeeze the trigger several times to prime sprayer.
- 2) Check the trigger sprayer operation by removing trigger head from water and squeezing.
- 3) Straighten out the hose, remove bottle cap and push out cap liner by inserting the end of hose through the cap hole.
- 4) Feed enough hose through the hole so the end of hose will reach bottom of bottle. Insert hose into bottle and firmly screw the cap onto bottle.
- 5) Adjust the spray nozzle for desired spray pattern.

## IF SPRAYER FAILS TO OPERATE:

Unscrew nozzle tip from sprayer and clear any obstructions with a pin and repeat steps 1- 5.

## STORAGE OF TRIGGER SPRAYER

- \* Hook the trigger on or under the bottle handle so that trigger is above the level of contents.
- \* To prevent clogging of trigger, remove hose from sprayer and pump clean water through the hose and trigger.

## STORAGE &amp; DISPOSAL

Protect from freezing. Keep pesticide in original container. Store in a cool, dry place, preferably in a locked storage area inaccessible to children.  
 PESTICIDE DISPOSAL: Securely wrap original container in several layers of newspaper and discard in trash.  
 CONTAINER DISPOSAL: Do not reuse empty container. Rinse thoroughly before discarding in trash.

