



UNITED STATES ENVIRONMENTAL PROTECTION AGENCY  
WASHINGTON, DC 20460

OFFICE OF CHEMICAL SAFETY  
AND POLLUTION PREVENTION

October 30, 2024

Rebecca Mannion  
Agent for Midlab  
Scientific & Regulatory Consultants, Inc.  
Electronic Transmittal: [rmannion@srcconsultants.com](mailto:rmannion@srcconsultants.com)

Subject: PRIA Label Amendment – Add Additional Public Health Microorganisms claims with revised Label.  
Product Name: FACILITY + RTU  
EPA Registration Number: 45745-12  
Received Date: 10/24/2023  
Action Case Number: 00493171

Dear Rebecca Mannion:

The amended label referred to above, submitted in connection with registration under the Federal Insecticide, Fungicide and Rodenticide Act, as amended, is acceptable. This approval does not affect any conditions that were previously imposed on this registration. You continue to be subject to existing conditions on your registration and any deadlines connected with them.

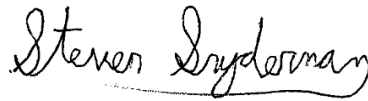
A stamped copy of your labeling is enclosed for your records. This labeling supersedes all previously accepted labeling. Pursuant to 40 CFR 156.10(a)(6), you must submit one copy of the final printed labeling before you release the product for shipment with the new labeling. In accordance with 40 CFR 152.130(c), you may distribute or sell this product under the previously approved labeling for 18 months from the date of this letter. After 18 months, you may only distribute or sell this product if it bears this new revised labeling or subsequently approved labeling. "To distribute or sell" is defined under FIFRA section 2(gg) and its implementing regulation at 40 CFR 152.3.

Should you wish to add/retain a reference to the company's website on your label, then please be aware that the website becomes labeling under FIFRA and is subject to review by the Agency. See FIFRA section 2(p)(2). If the website is false or misleading, the product would be misbranded and unlawful to sell or distribute under FIFRA section 12(a)(1)(E). 40 CFR 156.10(a)(5) lists examples of statements EPA may consider false or misleading. In addition, regardless of whether a website is referenced on your product's label, claims made on the website may not substantially differ from those claims approved through the registration process, FIFRA section 12(a)(1)(B). Therefore, should the Agency find or if it is brought to our attention that a website contains false or misleading statements or claims substantially

differing from the EPA approved registration, the website will be referred to the EPA's Office of Enforcement and Assurance.

Your release for shipment of the product constitutes acceptance of these conditions. If these conditions are not complied with, the registration will be subject to cancellation in accordance with FIFRA section 6. If you have any questions, please contact Srinivas Gowda by phone at 202-565-0078, or via email at [gowda.srinivas@epa.gov](mailto:gowda.srinivas@epa.gov).

Sincerely,

A handwritten signature in black ink that reads "Steven Snyderman". The signature is written in a cursive style with a horizontal line underneath the name.

Steven Snyderman, Product Manager 33  
Regulatory Management Branch II  
Antimicrobials Division (7510M)  
Office of Pesticide Programs

**Enclosure:** Stamped Final Label

(Note to reviewer: Text appearing in parenthesis is done to show optional text. Brackets indicate an interchangeable option, at least one of which is to be selected. **Bold, Italicized text is information for the reviewer and is not part of the label.**)

## FACILITY +™ RTU

(**Alternate Brand Names: Maxim Facility +™ RTU; Facility +™ by Maxim**)

**ACTIVE INGREDIENT:**

Hydrogen Peroxide.....0.26%

**OTHER [INERT] INGREDIENTS:**..... 99.74%

**TOTAL:**..... 100.00%

**KEEP OUT OF REACH OF CHILDREN**

**ACCEPTED**

**10/30/2024**

Under the Federal Insecticide, Fungicide  
and Rodenticide Act as amended, for the  
pesticide registered under

EPA Reg. No. 45745-12

(For medical emergencies, call {insert name and/or number of emergency contact}  
(insert hours of operation) (24 hours a day) (7 days a week).)

(See (additional) [reference] [sheet] [insert] [inside] [outer container] (enclosed in  
each case) for (other) [directions for use] [information] [claims] [organisms] [a  
complete list of #pathogenic organisms] [additional features, claims, direction for use]  
([claimed for][eliminated by] this product).)

***A reference sheet may be included with the phrase 'Reference Sheet' added to the  
top, listing claims and uses that appear on this label.***

(See bottle label inside for complete directions for use.)

Net Contents:

EPA Reg. No. 45745-12      EPA Est. No. ***Checkboxes may be used if more than one  
number is listed on the label.***

(Batch) (Lot) (No) (Manufacturing Date):  
(Product of \_\_\_\_)(Made in \_\_\_\_)

***Address modifier is only required for sub-registrations***[Distributed by][Manufactured  
by][Manufactured exclusively for][Sold by:]  
Midlab  
140 Private Brand Way  
Athens, TN 37303

(For Customer Care (call: ###-###-####) (email: ***insert company address***))  
(Made in \_\_\_\_)(Product of \_\_\_\_)(of [Domestic] (&) [Imported] Material)

(Item No.)(Item #)  
(© ***company name to be inserted***)

(Note to reviewer: Text appearing in parenthesis is done to show optional text. Brackets indicate an interchangeable option, at least one of which is to be selected. ***Bold, Italicized text is information for the reviewer and is not part of the label.***)

### **FEATURES, CLAIMS & USES:**

***Marketing text is considered optional and may appear on any panel of the label, in any order. Commas and the words "and" "or" can be added to phrases to make text grammatically correct. Short phrases that are not a complete sentence may omit the period at the end of the claim. The following marketing claims may be used with the prefix "This product" or actual product name.***

(Ready-to-Use) (Multi-Surface<sup>§</sup>) (Disinfectant<sup>§</sup>) • (ONE-STEP DISINFECTANT<sup>§</sup>) •  
(Cleaner) • (\*Virucidal) • (Bactericidal)  
• (Deodorizer) (Deodorant) (Odor Counteractant) (Odor Neutralizer)  
(CLEANS, DISINFECTS & DEODORIZES<sup>§</sup>)

### **DISINFECTION MARKETING CLAIMS**

- Antimicrobial
- [Bathroom] [Restroom] [Bowl] Disinfectant<sup>§</sup> Cleaner for [use on] hard non-porous surfaces: ***insert from Hard Non-porous Surfaces List.***
- Can also be used to pre-clean and disinfect<sup>§</sup> hard, non-porous hospital items<sup>¥</sup>: ***insert from Medical Hard Non-porous Surfaces List*** (- any washable non-food contact surface where disinfection is required.)
- Cleans and disinfects<sup>§</sup> (finished floors) (without dulling gloss).
- Cleans, disinfects, and deodorizes hard, non-porous (hospital) (medical<sup>¥</sup>) surfaces in one step when used according to disinfection directions.
- Cleans, disinfects, and deodorizes hard, non-porous (hospital) (medical<sup>¥</sup>) surfaces (in one step) (with no rinsing required) when used according to disinfection directions (for the following use sites): ***insert from Locations List or Medical Locations and Hard Non-porous Surfaces Lists.***
- Cleans, disinfects<sup>§</sup>, and deodorizes ***insert from Hard Non-porous Surfaces List*** and all hard non-porous, washable surfaces found in the [bathroom] [restroom] (in the presence of 5% organic soil).
- Cross-contamination is of major housekeeping concern. This product has been formulated to aid in the reduction of cross-contamination between treated hard, non-porous surfaces not only in hospitals, but in schools, institutions, and industry.
- Daily disinfecting against [germs] [~~pathogenic~~ microorganisms]<sup>§</sup>.
- Designed for daily use on hard, non-porous materials found in hospitals<sup>¥</sup>.
- Designed for healthcare<sup>¥</sup> hard nonporous surfaces.
- (Designed) For use (in ***insert from Locations List or Medical Locations List***) on hard, non-porous surfaces: ***insert from Hard, Non-porous Surfaces List or Medical Hard Non-porous Surfaces List.***
- Disinfects hard, non-porous non-food contact (kitchen) (and) (bathroom) surfaces (and floors).
- Easy to use.<sup>§</sup>
- Effective against antibiotic resistant bacteria<sup>\*\*§</sup>
- Effective against ***insert organism name from Disinfection Organism section***<sup>§</sup>
- Facility + <sup>™</sup> RTU by Maxim
- For [Hospital] [Health Care] [Industrial] (&) [Institutional] Use

(Note to reviewer: Text appearing in parenthesis is done to show optional text. Brackets indicate an interchangeable option, at least one of which is to be selected. ***Bold, Italicized text is information for the reviewer and is not part of the label.***)

- Has shown effectiveness against ***insert organism name from Disinfection Organism section***<sup>§</sup>.
- Hospital Disinfectant Cleaner<sup>§</sup>
- Hydrogen Peroxide Disinfectant<sup>§</sup> Cleaner
- (Is a disinfectant cleaner that) cleans, disinfects and deodorizes in one labor saving step<sup>§</sup>.
- Is a hospital-use disinfectant that is effective against a broad spectrum of bacteria, is virucidal\*(, and eliminates odor causing bacteria) when used according to disinfecting directions.
- Is a (one-step) (hospital-use) (broad-spectrum) (multi-surface) (germicidal) disinfectant, cleaner (and) ([deodorant] [odor-counteractant] [odor neutralizer]) designed for general cleaning, (and) disinfecting, (deodorizing) (and removing mold and mildew stains) (on) (of) hard, non-porous surfaces when used according to disinfection directions.
- Is a proven disinfectant, cleaner, and \*virucide<sup>§</sup>.
- Is a (ready to use) (bowl^ and) bathroom cleaner, which cleans, disinfects, and deodorizes<sup>§</sup>.
- is a (ready to use) (bowl^ and) (bathroom) (restroom) cleaner that cleans, disinfects and deodorizes in one easy step when used according to disinfection directions.
- Is a ready to use hospital use disinfectant that is effective against a broad spectrum of bacteria(, and) is virucidal\* (, and eliminates odor causing bacteria) when used according to disinfecting directions.
- Is a versatile disinfectant for veterinarian, veterinary practice, animal care, animal laboratory, and agricultural and farm premise applications.
- Is an effective [bactericide] (and) [virucide\*] [disinfectant] in the presence of [organic soil] [5% (blood) serum].
- [Is designed for use on] [Use daily on] (the following) hard, non-porous (inanimate) surfaces: ***insert from Hard Non-porous Surfaces List or Medical Hard Non-porous Surfaces List*** (- any hard, non-porous washable non-food contact surface where disinfection is required.)
- Is designed to provide both general cleaning and one-step disinfection<sup>§</sup>.
- Is for use on hard, non-porous surfaces in ***insert from Locations List or Medical Locations List***.
- Is for use in meat and poultry plants on hard, non-porous surfaces in inedible product processing areas, non-processing areas and/or exterior areas, meat and poultry plants as a floor and wall cleaner for use in all departments, and meat and poultry plants as a disinfectant agent for use in all departments.
- Is formulated for use on (washable) hard, non-porous surfaces: ***insert from Hard Non-porous Surfaces List or Medical Hard Non-Porous Surfaces List***.
- Is used to disinfect hard, non-porous (salon) (barber) tools and instruments such as combs, clippers, plastic rollers, brushes, trimmers, razors, scissors, blades, tweezers, baths, manicure instruments, pedicure instruments, and footbath surfaces.
- [Its non-abrasive formula is designed for use] [Use (it) daily on] [Use daily to clean and disinfect<sup>§</sup>] hard, non-porous [bathroom] [restroom] surfaces: ***insert from Hard***

(Note to reviewer: Text appearing in parenthesis is done to show optional text. Brackets indicate an interchangeable option, at least one of which is to be selected. ***Bold, Italicized text is information for the reviewer and is not part of the label.***)

***Non-porous Surfaces List or Medical Hard Non-porous Surfaces List.***

- [Its non-abrasive formula is designed for use on] [Use (it) daily on] [Use daily to clean and disinfect<sup>§</sup>] hard, non-porous surfaces: ***insert from Hard Non-porous Surfaces List*** found in [barns, pens and stalls] [animal housing facilities].
- Kills (99.9% of) ***insert organism name from Disinfection Organism section*** (in ***insert corresponding contact time for listed organism<sup>§</sup>***) on hard, non-porous (non-food contact) surfaces.
- ***If a virus name is selected, "99.9% of" is required text.***
- Kills [(99.9% of) bacteria] [99.9% of germs] on hard, non-porous surfaces (in your home) ((that get) tracked into your home) (by [shoes] [pets] [kids]) (from outside) (every day) when use as directed.
- Kills [(99.9% of) bacteria] [99.9% of germs] on hard, non-porous surfaces in your kitchen ((that get) tracked into your home) (by [shoes] [pets] [kids]) (from outside) (every day). Food contact surfaces must be rinsed with potable water.
- Kills bacteria and helps reduce cross-contamination on treated hard, non-porous non-food contact kitchen surfaces listed on this label.
- [Kills,] [eliminates,] [removes,] (and) [destroys] 99.9% of germs, bacteria and viruses\* on hard, non-porous surfaces.
- Kills \*viruses on hard, nonporous surfaces.
- May be used to clean and disinfect<sup>§</sup> hard, non-porous surfaces [in ***insert from Locations List or Medical Locations List***] [(of) ***insert from Hard Non-porous Surfaces or Medical Hard Non-porous Surfaces List***].
- Meets Surface Disinfection Recommendations from OSHA Bloodborne Pathogen Standard (for \*HBV & \*HIV).
- Multi surface cleaner disinfectant<sup>§</sup> for hard, non-porous surfaces
- Multi-Surface Disinfectant Cleaner<sup>§</sup> for hard, non-porous surfaces
- Non-abrasive formula (designed) for use on hard, non-porous surfaces(: ***insert from Hard Non-porous Surfaces List or Medical Hard Non-porous Surfaces List***).
- ONE-STEP DISINFECTANT CLEANER AND DEODORANT<sup>§</sup>
- [Restroom] (&) [Bathroom] [Hospital] [Multi-Surface] Disinfectant<sup>§</sup> Cleaner
- Use daily (in ***insert from Locations List or Medical Locations List***) on hard, non-porous surfaces of: ***insert from Hard Non-porous Surfaces List or Medical Hard Non-porous Surfaces***.
- Use daily to disinfect [germs] [#pathogenic microorganisms]<sup>§</sup>.
- Use this product to help reduce cross-contamination between treated hard, non-porous multi-touch surfaces.
- (When used as directed) [can be used to] [is formulated to] disinfect (and) (clean) (deodorize).<sup>§</sup>
- Will disinfect, clean, and deodorize hard, nonporous surfaces<sup>§</sup> in restrooms and toilet areas, behind and under sinks and counters, garbage cans and garbage storage areas, and other hard, non-porous surfaces where bacterial growth can cause malodors.

(Note to reviewer: Text appearing in parenthesis is done to show optional text. Brackets indicate an interchangeable option, at least one of which is to be selected. ***Bold, Italicized text is information for the reviewer and is not part of the label.***)

### ***Electrostatic Sprayer Claims***

- For use with electrostatic sprayers.
- May be applied with an electrostatic sprayer.
- Positively charged antimicrobial droplets are attracted to negatively charged environmental surfaces allowing for improved coverage on hard, non-porous environmental surfaces.

### ***SARS-CoV-2 Claims***

- Effective against \*SARS-Related Coronavirus 2 (SARS-CoV-2) (the virus that causes COVID-19) (and variant hCoV-19/Delta/PHC658/2021) (and Delta variant)<sup>±</sup>
- Effective against SARS-Related Coronavirus 2 (SARS-CoV-2) (the virus that causes COVID-19) (and variant hCoV-19/Delta/PHC658/2021) (and Delta variant) on hard, non-porous surfaces in 30 seconds.
- [Kills 99.9%][Eliminates 99.9%] of SARS-CoV-2<sup>±</sup> (the virus that causes COVID-19) (and variant hCoV-19/Delta/PHC658/2021) (and Delta variant).
- [Kills][Effective against] the virus that causes COVID-19 (and variant hCoV-19/Delta/PHC658/2021) (and Delta variant)<sup>±</sup> (in 30 seconds).
- One-step disinfectant<sup>§</sup> for killing SARS-CoV-2<sup>±</sup> (and variant hCoV-19/Delta/PHC658/2021) (and Delta variant) [in 30 seconds] [in the presence of soil].
- Tested [proven effective] against SARS-CoV-2<sup>±</sup> (and variant hCoV-19/Delta/PHC658/2021) (and Delta variant) [in 30 seconds].

### ***SOFT SURFACE SPOT SANITIZER CLAIMS***

***If the below claims are included on a label that lists hospital/medical use sites, the claims must add the following phrase to the end of their statement indicating where the application may be used:***

found in ***insert site from Locations***

- Effective as a soft surface sanitizer<sup>1</sup>
- [Kills 99.9%] [Eliminates 99.9%] of bacteria on soft surfaces<sup>1</sup> (***insert from Soft Surfaces List<sup>1</sup>***)
- [Kills 99.9%] [Eliminates 99.9%] of Staphylococcus aureus (Staph<sup>2</sup>) and Klebsiella pneumoniae on soft surfaces<sup>1</sup> (***insert from Soft Surfaces List<sup>1</sup>***)
- Sanitizes soft surfaces<sup>1</sup> in 3 minutes (on ***insert from Soft Surfaces List<sup>1</sup>***)
- Soft Surface sanitizer<sup>1</sup>

### ***ANTIMICROBIAL DEODORIZER CLAIMS***

- Deodorizes by killing microorganisms<sup>§</sup> that causes offensive odors.
- [Eliminates] [destroys] odors and odor-causing bacteria on hard, non-porous surfaces (in restroom areas), (behind and under sinks and counters), (in storage areas) (where bacterial growth can cause malodors)<sup>§</sup>.
- Fewer products – no need for separate deodorizer.
- (It) (also) reduces odor-causing bacteria<sup>§</sup> leaving [bathrooms] [restrooms] smelling

(Note to reviewer: Text appearing in parenthesis is done to show optional text. Brackets indicate an interchangeable option, at least one of which is to be selected. ***Bold, Italicized text is information for the reviewer and is not part of the label.***)

clean and fresh.

- (It) cleans, disinfects and deodorizes hard, non-porous surfaces by killing odor-causing microorganisms<sup>§</sup>.
- Kills odor-causing bacteria<sup>§</sup>.
- Kills odor-causing bacteria<sup>§</sup> in ***insert site from Locations or Medical Locations List<sup>§</sup>***.
- Will deodorize hard, nonporous surfaces (where (obnoxious) (nasty) (disagreeable) odors may develop).
- Will deodorize surfaces where bacteria growth can cause malodors.

#### **CLEANING AND DEODORIZATION MARKETING CLAIMS**

- (Animal Housing Facilities:) This product cleans by removing dirt, grime, (mold & mildew stains) (odors), blood, urine, fecal matter and other common soils found in ***insert from Locations list***.
- Cleans.
- Cleans (and shines) (by removing) [dirt] [grime] [food soils in food preparation and processing areas] [everyday kitchen messes] [non-food contact kitchen surfaces and food preparation areas] (like dirt, grease and food stains). Food contact surfaces must be rinsed with potable water.
- Cleans (quickly) by removing dirt, grime, (blood,) (urine,) (fecal matter,) (mold stains & mildew stains,) (odors,) (stains,) (food residue,) (body oils,) (dead skin,) (and) (other common soils) (organic matter) found in ***insert sites from Locations List or Medical Locations*** on hard, non-porous non-food contact (medical<sup>¥</sup>) surfaces.
- Cleans, Deodorizes and Brightens in One Step.
- Cleans everyday messes.
- Cleans (floors) (glass) (carpets) (countertops) (bathrooms) (kitchens) (hard, non-porous surfaces)
- Cleans Grout.
- Cleans hard, non-porous water washable surfaces!
- Cleans ***insert from Hard Non-porous Surface or Medical Hard Non-porous Surface List***.
- Cleans to a shine.
- Counteracts malodors.
- Cuts cleaning time.
- Daily cleaning.
- Degreaser.
- Deodorizes areas that are hard to keep fresh smelling.
- Fast strong cleaning.
- For non-scratch cleaning of showers and tubs, shower doors and curtains, fixtures, and toilet bowls.
- Is a floor cleaner.
- Is for non-scratch cleaning of showers and tubs, shower doors and shower curtains, fixtures, and toilet bowls<sup>^</sup>.



(Note to reviewer: Text appearing in parenthesis is done to show optional text. Brackets indicate an interchangeable option, at least one of which is to be selected. ***Bold, Italicized text is information for the reviewer and is not part of the label.***)

- Is formulated to provide effective cleaning strength that will not dull high gloss floor finishes with repeated use.
- Makes cleaning easier.
- Neutralizes musty odors and tough odors from smoke, pet accidents, and spills on contact.
- Provides effective cleaning strength that will not dull most metal-interlock floor finishes and does not require a rinse prior to recoat.
- Provides long lasting freshness against tough (pet) odors (such as odors from litter boxes and pet accidents).
- Removes [and][or] cleans [Bathtub ring,] [Blood,] [Body oils,] [Dirt,] [Fecal matter,] [Grime,] [Laboratory stains,] [Common [soils] (and) [stains],] [Organic matter,] [Urine].
- Removes dirt.
- Removes stains.
- The smell of clean.
- This (product's) formula will not dull surfaces, eliminating time and labor normally required for rinsing.
- Use Daily to Prevent the Buildup of Dirt and Grime.
- Use of this product will control unpleasant [malodors][odors].
- Use where odors are a problem.

#### ***GENERAL MARKETING CLAIMS***

- Can be applied through low-pressure sprayer systems.
- Clear (drying) formula.
- Contains hydrogen peroxide.
- Contains no fragrances.
- Cuts cleaning time.
- Degradable active ingredient
- Do not use on glasses, dishes, and utensils.
- Do not use on marble or un-sealed/un-coated terrazzo floors.
- Fragrance free.
- Fragrance Free Formula.
- Good for use with microfiber cloths.
- Has been designed specifically for areas where housekeeping is of prime importance.
- Incidental or accidental splash, spray or spills can happen. These will not [stain] [discolor] [bleach] uniforms, furnishings, equipment, clothing or color safe fabrics.
- Is effective yet economical.
- Leaves no visible residue.
- No added [perfumes][fragrances] [and][or][dyes].
- No alcohol smell cleaner.
- No harsh cleaner smell.
- Non-abrasive (formula designed for daily use).
- Non-dulling formula eliminates the time and labor normally required for rinsing (floors).

(Note to reviewer: Text appearing in parenthesis is done to show optional text. Brackets indicate an interchangeable option, at least one of which is to be selected. ***Bold, Italicized text is information for the reviewer and is not part of the label.***)

- Unscented.
- Will not harm sealed stone, sealed grout, or glazed tile.
- Will not harm most hard, non-porous surfaces.
- Will not leave grit or soap scum.
- Will not (stain) (discolor) (lighten) uniforms or fabrics. Color safe.

#### ***PACKAGING CLAIMS***

- Convenient trigger spray. ***(To be used on applicable container)***
- Ready to Use (RTU)
- This [container][bottle] is made of (at least) (X) % post-consumer recycled plastic.

(Note to reviewer: Text appearing in parenthesis is done to show optional text. Brackets indicate an interchangeable option, at least one of which is to be selected. ***Bold, Italicized text is information for the reviewer and is not part of the label.***)

***At least one location/surface must appear on the label. In the case where one or more location/surface is chosen, a comma, "and" "&" or "or" may be used to link locations/surfaces.***

***LOCATIONS LIST: These locations and items must be used in conjunction with one of the Marketing Claims preceding the Lists.***

- airline terminals
- airplanes
- airports
- animal holding areas<sup>β</sup>
- animal housing facilities<sup>β</sup>
- animal (life science) laboratories
- animal quarantine areas
- animal research centers
- art galleries
- athletic facilities
- attics
- automobiles
- bakeries<sup>β</sup>
- banks
- [barber] [beauty] [salons] [shops]
- barges
- barns<sup>β</sup>
- bars<sup>β</sup>
- basements
- bath areas
- bathrooms
- bedrooms
- beverage plants<sup>β</sup>
- boats
- bookstores
- bowling alleys
- boxcars
- break rooms
- breweries<sup>β</sup>
- bus [depots] [stations]
- buses
- businesses
- cafeterias<sup>β</sup>
- campers
- campgrounds
- canneries<sup>β</sup>
- cars
- casinos
- catering<sup>β</sup>
- cellars
- cheese factories<sup>β</sup>
- churches
- classrooms
- coffee shops<sup>β</sup>
- [coin-operated] [commercial] laundries
- commercial kitchens<sup>β</sup>
- commercial sites
- (community) colleges
- convenience stores
- correctional [facilities] [institutions]
- courthouses
- cruise lines
- cruise ships
- dairies [dairy farms]<sup>β</sup>
- day care centers
- delivery trucks
- department stores
- (dog) (cat) (animal) kennels
- (dog) (cat) (animal) pens
- donut shops
- dormitories
- dressing rooms
- egg processing plants<sup>β</sup>
- equine farms
- exercise facilities
- exercise rooms
- factories
- farms<sup>β</sup>
- fast food operations<sup>β</sup>
- meat and poultry [establishments] [plants]<sup>β</sup>
- fire [facilities] [stations]
- fire trucks
- food (and) (beverage) [processing] [brewing] plants<sup>β</sup>
- foodservice establishments<sup>β</sup>
- food handling and processing areas<sup>β</sup>
- food preparation and storage areas<sup>β</sup>
- food storage areas<sup>β</sup>
- funeral homes
- garages
- garbage trucks
- gift shops
- grooming [establishments] [facilities]
- gyms [gymnasiums]
- (hair) ([nail] [pedicure]) salons
- health clubs
- helicopters
- homes
- hotels
- housekeeping rooms
- industrial (and) (commercial) buildings
- industrial sites
- institutional facilities
- institutional kitchens<sup>β</sup>
- institutions
- jails
- janitorial rooms
- kennels

(Note to reviewer: Text appearing in parenthesis is done to show optional text. Brackets indicate an interchangeable option, at least one of which is to be selected. ***Bold, Italicized text is information for the reviewer and is not part of the label.***)

- kitchens<sup>β</sup>
- kindergartens
- [labs] [laboratories]
- laundry cleaning facilities
- laundry facilities
- laundry rooms
- libraries
- liquor stores
- living rooms
- [livestock] [poultry] [swine] [premises] [facilities]<sup>β</sup>
- locker rooms
- maintenance vehicles
- manufacturing plants
- [massage][facial] salons
- motels
- movie houses
- municipal government buildings
- museums
- nursery schools
- office buildings
- offices
- other (small) animal (care) facilities
- other household areas
- penitentiaries
- performance centers
- pet animal quarters
- pet [shops] [stores]
- pet washing areas
- picnic facilities<sup>β</sup>
- playgrounds
- police cars
- police stations
- porches
- post offices
- preschools
- prisons
- processing facilities for fish, milk, citrus, wine, fruit, vegetable, ice cream, and potatoes<sup>β</sup>
- public [areas] [facilities] [places] (public) restrooms
- public transportation
- quarantine areas
- recreational facilities
- recycling centers
- restaurants<sup>β</sup>
- retail and wholesale establishments
- retirement communities
- RVs
- schools
- shipping terminals
- ships
- shopping malls
- shower areas
- shower rooms
- small animal facilities
- spas
- sports [arenas] [complexes]
- stadiums
- stalls
- supermarkets<sup>β</sup>
- tank trucks
- tankers
- tanning [beds] [salons]
- taverns<sup>β</sup>
- taxis
- technical schools
- theaters
- trailers
- train [depots] [stations]
- trains
- transportation facilities
- transportation terminals
- travel rest areas
- trucks
- universities
- vehicles
- veterinary clinics
- waiting rooms
- warehouses
- washing areas
- watercraft
- wineries<sup>β</sup>
- workstations
- zoos

***HARD NON-POROUS SURFACES LIST: These locations and items must be used in conjunction with one of the Marketing Claims preceding the Lists.***

- aluminum
- animal equipment
- appliances<sup>¶</sup>
- [athletic] [exercise] equipment
- [athletic] [gymnastic] [wrestling] mats
- athletic training tables
- (baby) cribs
- baked enamel surfaces
- (bathroom) sinks
- barber tools
- basins
- bathroom fixtures
- bathtubs
- bed frames
- benches
- cabinets
- cages
- carts
- ceilings
- cellular phones
- chairs
- chrome
- chrome plated intakes
- closet handles

(Note to reviewer: Text appearing in parenthesis is done to show optional text. Brackets indicate an interchangeable option, at least one of which is to be selected. ***Bold, Italicized text is information for the reviewer and is not part of the label.***)

- combs
- computer mouse
- computer peripherals
- computer tables
- cords
- counter(top)s
- crates
- desks(tops)
- diaper changing stations
- docking stations
- doorknobs
- exterior toilet surfaces
- exterior of pipes
- exterior surfaces of air vents or air vent exteriors
- faucets
- finished baseboards and windowsills
- finished floors
- fixtures
- floors [floor areas]
- folding tables<sup>β</sup>
- foot spas
- Formica<sup>®</sup>
- garbage cans
- glass (surfaces)
- glazed ceramic
- glazed porcelain
- glazed tile(s)
- gurneys
- hair clippers
- handles
- handheld (electronic) devices
- headboards (and footboards)
- highchairs
- high touch surfaces
- (kitchen) sinks
- kennels
- keyboards
- laminated surfaces (and baked enamel surfaces associated with floors, walls, and non-food contact countertops)
- laptops
- [linings] [inner] [inside of] drawers
- manicure instruments
- metal
- microwave ovens<sup>¶</sup>
- mirrors
- mobile devices
- mobile electronic equipment
- mobile workstations
- mouse pads
- painted surfaces
- plastic (such as polycarbonate, polyvinylchloride, polystyrene or polypropylene) (surfaces)
- plastic mattress covers
- plastic rollers
- plated steel
- playground equipment
- Plexiglas<sup>®</sup>
- plumbing fixtures
- portable toilets<sup>^</sup>
- racks
- razors
- refrigerators<sup>¶</sup>
- remote controls
- restroom fixtures
- scales
- scissors
- sealed concrete
- sealed limestone
- sealed slate
- sealed stone
- sealed terra cotta
- sealed terrazzo
- shelves
- shower doors
- shower rooms and locker room areas
- shower stalls
- sink basins
- sinks
- stainless steel
- stoves<sup>¶</sup>
- stovetops<sup>¶</sup>
- stretchers
- tables<sup>β</sup>
- tablet (PCs)
- tanning beds
- tanning equipment
- telephones
- toilet seats
- toilet(s) (bowls)<sup>^</sup>(rims)
- trash [cans] [containers]
- trash compactors
- trimmers
- tubs
- tweezers
- urinals<sup>^</sup>
- vanity tops
- vinyl
- vinyl and plastic upholstery
- walls
- wash basins
- washable nail files
- washable wallpaper
- whiteboards (porcelain, melamine, tempered glass and painted steel magnetic)
- windows

and other hard, non-porous surfaces.

(Note to reviewer: Text appearing in parenthesis is done to show optional text. Brackets indicate an interchangeable option, at least one of which is to be selected. ***Bold, Italicized text is information for the reviewer and is not part of the label.***)

***MEDICAL LOCATIONS AND HARD NON-POROUS SURFACES LISTS: These locations and items must be used in conjunction with one of the Marketing Claims preceding the Lists.***

***Medical Locations: ‡ This qualifier must appear before the list of locations***

- |                      |                      |                    |
|----------------------|----------------------|--------------------|
| • [acute] (and)      | Medical Services     | • [operating       |
| [long-term] care     | (EMS) facilities     | rooms] [ORs]       |
| [facilities]         | • [emergency         | • ophthalmic       |
| [institutions]       | rooms] [ERs]         | offices            |
| • alternate care     | • emergency          | • out-patient      |
| institutions         | transport            | [surgical centers  |
| • ambulances or      | vehicles             | (OPSC)] [clinics]  |
| [emergency           | • [exam]             | [facilities]       |
| medical]             | [examination]        | • patient areas    |
| transport            | [rooms] (or)         | • patient (care)   |
| vehicles             | [areas]              | rooms              |
| • ambulatory care    | • eye surgical       | • patient care     |
| centers              | centers              | facilities         |
| • ambulatory         | • healthcare         | • pharmacies       |
| surgical centers     | [settings]           | • physical therapy |
| (ASC)                | [facilities]         | rooms              |
| • anesthesia         | • home health care   | • psychiatric      |
| [rooms] (or)         | (settings)           | facilities         |
| [areas]              | • home healthcare    | • public (care)    |
| • assisted living    | institutions         | areas              |
| (facilities)         | • hospices           | • [radiology] [X-  |
| • autopsy rooms      | • hospitals          | ray] [rooms]       |
| • [blood] [plasma]   | • Intensive Care     | [areas]            |
| [semen] [milk]       | Units or ICU[s]      | • reception        |
| [apheresis]          | [areas]              | [counter] [desks]  |
| donation centers     | • isolation [areas]  | [areas]            |
| • blood collection   | [wards]              | • recovery rooms   |
| rooms                | • laboratories       | • rehabilitation   |
| • CAT laboratories   | • [medical]          | centers            |
| • central service    | [physician's]        | • respiratory      |
| areas                | [doctor's] (and)     | centers            |
| • central supply     | [dental] [offices]   | • respiratory      |
| [rooms] [areas]      | [clinics]            | therapy [rooms]    |
| • [Critical Care     | • medical facilities | [areas]            |
| Units] [CCUs]        | • medical research   | • restrooms        |
| • dialysis [clinics] | facilities           | • surgical centers |
| [facilities]         | • neonatal units     | • surgery rooms    |
| • elder care         | • nursing homes      | • waiting [rooms]  |
| centers              | • nursing or         | [areas]            |
| [facilities]         | nurses' stations     | • x-ray CAT labs   |
| • Emergency          |                      |                    |

(Note to reviewer: Text appearing in parenthesis is done to show optional text. Brackets indicate an interchangeable option, at least one of which is to be selected. ***Bold, Italicized text is information for the reviewer and is not part of the label.***)

***Medical Hard Non-Porous Surfaces: ‡ This qualifier must appear before the list of items***

- anesthesia machines
- apheresis machines
- autoclaves¶
- bathroom doorknobs
- bed rails
- bedpans
- [bedside] commodes
- bedside tables
- blood pressure (BP) monitors
- blood pressure cuffs
- cabinet handles
- call boxes
- carts
- [CAT] [Computerized Axial Tomography] equipment
- cellular phones
- chairs
- charging stations
- computer mouse
- computer peripherals
- computer tables
- cords
- counter(top)s
- [crash] [emergency] carts
- desk(top)s
- diagnostic equipment
- docking stations
- [Emergency Rooms] [ERs] surfaces
- [exam] [examination] tables
- [external surfaces of medical‡ equipment] [medical‡ equipment surfaces]
- external surfaces of dialysis machines
- external surfaces of ultrasound transducers (and/or probes)
- gurneys
- handheld (electronic) devices
- hard, non-porous edges of privacy curtains
- hard, non-porous hospital or medical‡ headboards (and footboards)
- high touch surfaces
- [hospital] [patient] bed(s) (springs) (railings) (frames)
- isolettes
- IV [stands] [pumps] [poles]
- keyboards
- laptops
- loupes
- mammography equipment
- medication carts
- [Mayo] [instrument] stands
- mobile devices
- mobile electronic equipment
- mobile workstations
- hard non-porous mouse pads
- [MRI] [Magnetic Resonance Imaging equipment]
- nonporous hospital mattresses
- nurse-call [devices] [buttons] (and cords)
- operating room tables and lights
- operatory light switches
- orthopedics
- overbed tables
- pagers
- patent chairs
- patient monitoring equipment
- patient support and delivery equipment
- phlebotomy trays
- phone cradles
- [physical therapy] [PT] equipment
- plastic mattress covers
- power cords
- pulse oximeters
- PVC tubing
- reception [counter] [desks]
- remote controls
- respirators

(Note to reviewer: Text appearing in parenthesis is done to show optional text. Brackets indicate an interchangeable option, at least one of which is to be selected. ***Bold, Italicized text is information for the reviewer and is not part of the label.***)

- respiratory therapy equipment
- restrooms
- scales
- sequential compression devices
- shower fixtures
- side rails
- slit lamps
- spine backboards
- stethoscopes
- stools
- stretchers
- support bars
- tablet (PCs)
- toilet handholds
- traction devices
- walls [around toilet] [in patient rooms]
- wash basins
- wheelchairs
- x-ray equipment paddle

and other hard, non-porous surfaces. ***This may be added to either of the Hard, Non-porous Surfaces Lists***

### ***SOFT SURFACES LIST***

***(qualifier "1" must be added after the item(s) below, but only required to appear once at the end of any list or claim)***

- athletic gear
- backpacks
- bags
- bathmats
- bedding
- bed[skirts][sheets][spreads]
- blankets
- carseats
- chairs
- comforters
- couches
- curtains
- (seat) cushions
- decorative pillows
- draperies
- (exercise) (floor) mats
- Fabric blinds
- furniture upholstery
- fabric laundry bags/hampers
- lamp shades
- mattresses
- luggage
- shoes
- sofas
- sports equipment
- suitcases
- throw pillows
- rugs
- upholstery
- window treatments



(Note to reviewer: Text appearing in parenthesis is done to show optional text. Brackets indicate an interchangeable option, at least one of which is to be selected. ***Bold, Italicized text is information for the reviewer and is not part of the label.***)

## **MICROORGANISM CLAIMS**

*(The list of organisms can be formatted into paragraph form using a comma to separate organisms.)*

## **DISINFECTION ORGANISM SECTION**

When used according to the disinfection directions, this product is effective against a [broad-spectrum] of #pathogenic microorganisms (including bacteria, \*\*antibiotic-resistant bacteria, \*viruses, and fungi) in the presence of 5% serum load and contact time as noted, this product kills the following on hard, non-porous inanimate surfaces -

### **[(BACTERIA) [BACTERICIDAL ACTIVITY]:]**

3 minute contact time:

*Pseudomonas aeruginosa* (ATCC 15442)

<sup>2</sup>*Staphylococcus aureus* (*Staph*) (ATCC 6538) ***Qualifier symbol must be used if the abbreviated organism name is used in a claim***

<sup>3</sup>*Salmonella enterica* (*Salmonella*) (formerly known as *Salmonella choleraesuis*) (ATCC 10708) ***Qualifier symbol must be used if the abbreviated organism name is used in a claim***

*Acinetobacter baumannii* (ATCC BAA-1709)

*Enterococcus faecium* (ATCC 51559)

*Escherichia coli* (O157:H7) (ATCC 35150)

*Klebsiella aerogenes* (ATCC 13048)

*Streptococcus pneumoniae* (*Strep*) (ATCC 6305)

10 minute contact time:

*Listeria monocytogenes* (ATCC 19117)

(\*\*[Antibiotic-Resistant (Strains of) Bacteria] [Antibiotic-Resistant Bactericidal Activity] - )

\*\**Staphylococcus aureus*, Methicillin resistant (MRSA) (ATCC 33592)

\*\**Staphylococcus aureus*, Community Acquired Methicillin-resistant (CA-MRSA), (Genotype USA300) (NRS 384)

\*\**Staphylococcus aureus*, Community Acquired Methicillin-resistant (CA-MRSA), (Genotype USA400) (NRS 123)

\*\**Staphylococcus epidermidis*, [Methicillin-resistant] [(MRSE)] (ATCC 51625)

\*\**Streptococcus pneumoniae*, [Penicillin-resistant] [(PRSP)] (ATCC 700677)

\*\**Enterococcus faecalis*, Vancomycin Resistant (VRE) (ATCC 51575)

**(\*[Viruses] [VIRUCIDAL ACTIVITY]:)** In the presence of 5% serum load and contact time as noted, this product kills the following on hard, non-porous inanimate surfaces -

30 second contact time:

\*<sup>±</sup>SARS-Related Coronavirus 2 (SARS-CoV-2), BEI Resources NR-52281, Strain Isolate USA-WA1/2020 (the virus that causes COVID-19)

\*<sup>±</sup>SARS-Related Coronavirus 2 (SARS-CoV-2) Delta Variant (B.1.617.2), BEI Resources NR-55611, Strain hCoV-19/PHC658/2021 (the virus that causes COVID-19)

1 minute contact time:

\*Human Coronavirus (Strain 229E) (ATCC VR-740)

\*HIV-1 (Human Immunodeficiency Virus Type 1) (AIDS virus) ***The full virus name will appear at least once when used on the label.***

\*Influenza Virus Type A (H1N1) (ATCC VR-1469)

\*Influenza B Virus (ATCC VR-823) (Strain B/5/72)

\*Respiratory Syncytial Virus (ATCC VR-26, Strain Long)

\*Rhinovirus Type 37 (a cause of the common cold) (ATCC VR-1147)

\*Rotavirus (ATCC VR-2018)

5 minute contact time:

\*Adenovirus type 8 (ATCC VR-1368)

\*Enterovirus type D68 (ATCC VR-1825, Strain US/KY/14-18953)

\*Hepatitis B Virus (HBV) (Duck Hepatitis B Virus as the surrogate) on pre-cleaned surfaces ***The surrogate name in parentheses must appear on the label***

\*Hepatitis C Virus (HCV) (Bovine Viral Diarrhea Virus as the surrogate) ***The surrogate name in parentheses must appear on the label***

\*Herpes Simplex Virus Type 1 (ATCC VR-733)

\*Herpes Simplex Virus Type 2 (ATCC VR-734)

\*Norovirus (Feline Calicivirus as the surrogate) ***The surrogate name in parentheses must appear on the label***

**(Animal Premise Virucidal\* Performance:)** ***Contact times appearing in parentheses in this section are not optional text***

1 minute contact time:

\*Avian Influenza A (H7N9) virus (CDC # 2013759189, Strain wildtype A/Anhui/1/2013)

5 Minute contact time:

Feline Calicivirus

10 minute contact time

\*Canine Parvovirus (CPV) (ATCC VR-2017)

\*Murine Norovirus (MNV-1)

(Note to reviewer: Text appearing in parenthesis is done to show optional text. Brackets indicate an interchangeable option, at least one of which is to be selected. ***Bold, Italicized text is information for the reviewer and is not part of the label.***)

**Fungicidal Performance:** This product kills the following fungi in 10 minutes (in the presence of 5% serum load) on hard, non-porous surfaces: *Trichophyton interdigitale* (Athlete's foot fungus) (a cause of ringworm) (ATCC 9533).

#### ***HARD SURFACE SANITIZER SECTION***

**Sanitizing:** When used as a non-food contact surface sanitizer, (in the presence of 5% serum load,) this product reduces the following bacteria by 99.9% with a 1 minute contact time on hard non-porous inanimate surfaces:

*Staphylococcus aureus (Staph)* (ATCC 6538)

*Klebsiella aerogenes* (ATCC 13048)

#### ***SOFT SURFACE SPOT SANITIZER SECTION***

**Soft Surface Sanitizing<sup>1</sup>:** When used as a soft surface spot sanitizer on precleaned soft surfaces, this product reduces the following bacteria by 99.9% with a 3 minute contact time:

*Staphylococcus aureus (Staph)* (ATCC 6538)

*Klebsiella pneumoniae* (ATCC 4352)

(Note to reviewer: Text appearing in parenthesis is done to show optional text. Brackets indicate an interchangeable option, at least one of which is to be selected. ***Bold, Italicized text is information for the reviewer and is not part of the label.***)

**DIRECTIONS FOR USE:** It is a violation of Federal Law to use this product in a manner inconsistent with its labeling.

***One of these two options is required when the label includes any hospital sites or medical device surfaces or medical equipment.***

‡This product is not to be used as a terminal sterilant/high level disinfectant on any surface or instrument that (1) is introduced directly into the human body, either into or in contact with the blood stream or normally sterile areas of the body, or (2) contacts intact mucous membranes but which does not ordinarily penetrate the blood barrier or otherwise enter normally sterile areas of the body. This product may be used to pre-clean or decontaminate critical or semi-critical medical devices prior to sterilization or high level disinfection.

***(OR)***

This product is not for use on medical device or medical equipment surfaces.

Not recommended for use on copper, brass, granite, marble, or zinc.

***Bulleted use directions may be written in paragraph form.***

**§FOR USE AS A (DAILY) (BATHROOM) (RESTROOM) (ONE-STEP) DISINFECTANT (DEODORIZER) (/) (CLEANER):**

- Pre-clean visibly soiled surfaces.
- Spray 6 – 8 inches from hard, nonporous surfaces until visibly wet. Do not breathe spray.
- All surfaces must remain visibly wet for [three] [3] minutes. For *Listeria monocytogenes* or \*\*antibiotic-resistant bacteria a [ten] [10] minute contact time is required.
- Wipe (surfaces) dry (with a clean cloth (or paper towel)) (or let air dry) (or)(and) (rinse with water).

NOTE: Rinsing is not necessary unless floors are to be coated with finish or restorer. When cleaning floors, position “wet floor” signs around area to be cleaned. Floors will be slippery when wet or contaminated with foreign materials.

***{The following directions are considered optional language and may only appear as supplemental language when the directions above appear on the label.}***

**For Use as One-Step Cleaner/Disinfectant:**



( ) 1. Spray hard, nonporous surface until visibly wet.



( ) 2. Allow surface to remain visibly wet. Read label for contact times.



( ) 3. Wipe surface or let air dry.

Read label for entire directions for use.

**GENERAL DIRECTIONS FOR USE WITH [ELECTROSTATIC SPRAYER APPLICATION]  
[APPLICATOR/SPRAYER NAME]:**

Note: Consider material compatibility and potential for damage prior to application.

- Place signs or warning indicators outside the treatment area to indicate that treatment is in progress.
- Ensure that bystanders and pets are not present in the area to be treated.
- Put on appropriate PPE. At a minimum, this must include safety glasses, gloves and N95 mask.
- Follow manufacturer's instructions for sprayer use. Spray droplet particle size should be set to limit volume median diameter of  $\geq 110\mu\text{m}$ .
- Place the electrostatic spray function in the ON position for electrostatic spray models that have the functionality to toggle ON/OFF.
- Wiping is not required to ensure surface disinfection; however, you may choose to wipe specific surfaces to polish them (e.g., glass, mirrors) or to remove visible residue after the contact time is achieved.
- Individuals may enter area 30 minutes after treatment.

**For Use as a One-Step Cleaner/Disinfectant by Electrostatic Spraying:** Pre-clean visibly soiled surfaces. Apply product with electrostatic sprayer to hard, non-porous surfaces. Spray from 5 inches for 5 seconds or 18 inches for 15 seconds, making sure to wet surfaces thoroughly. All surfaces must remain visibly wet for [ten] [10] minutes for listed bacteria. Let air dry or wipe surfaces to polish.

**For use as a \*Virucide by Electrostatic Spraying:** Pre-clean visibly soiled surfaces. Apply product with electrostatic sprayer to hard, non-porous surfaces. Spray from 5 inches for 5 seconds or 18 inches for 15 seconds, making sure to wet surfaces thoroughly. All surfaces must remain visibly wet for [five] [5] minutes for listed viruses<sup>†</sup>. A [one] [1] minute contact time is required for \*HIV-1 (AIDS virus), \*Influenza Virus Type A (H1N1), \*Avian Influenza A (H7N9) virus and \*SARS-Related Coronavirus 2 (the virus that causes COVID-19)<sup>‡</sup>. ***(Specific virus statements to be included if used as a kill claim or, if those viruses are not listed elsewhere on the label any individual virus can be omitted from this instruction.)*** Let air dry or wipe surfaces to polish.

**FOR USE TO CLEAN AND DISINFECT SHOWER ROOMS, LOCKER ROOMS AND OTHER  
LARGE, OPEN AREAS WITH FLOOR DRAINS:**

- Pre-clean visibly soiled surfaces.
- Spray hard, non-porous floors, walls and ceilings from 6-8 inches. To disinfect, all surfaces must remain visibly wet for [three] [3] minutes. For *Listeria monocytogenes* or \*\*antibiotic-resistant bacteria a [ten] [10] minute contact time is required.
- Scrub using a (deck)(bristled)(scrub) brush.
- Rinse surfaces thoroughly and let air dry.

**FOR USE AS A \*VIRUCIDE:**

- Pre-clean visibly soiled surfaces.
- Spray hard, non-porous surfaces from 6-8 inches until visibly wet.
- All surfaces must remain visibly wet for [five] [5] minutes, unless otherwise noted as follows: Use a [ten] [10] minute contact time for \*Canine Parvovirus and \*Murine Norovirus.

Use a 1 minute contact time for \*Human Coronavirus, \*HIV-1 (AIDS virus), \*Influenza Virus Type A (H1N1), \*Influenza B Virus, \*Respiratory Syncytial Virus, \*Rhinovirus Type 37, \*Rotavirus and \*Avian Influenza A (H7N9) virus. Use a 30 second contact time for \*SARS-Related Coronavirus 2 (the virus that causes COVID-19).

***Specific virus statements to be listed if used as a kill claim or, if those viruses are not listed elsewhere on the label any individual virus can be omitted from this instruction.***

- Wipe (surfaces) dry (with a clean cloth (or paper towel)) (or let air dry) (or)(and) (rinse with water).

**\*Kills HIV-1, HBV and HCV on pre-cleaned surfaces/object previously soiled with blood and body fluids** in health care settings or other settings in which there is an expected likelihood of soiling of inanimate surfaces/objects with blood or body fluids and in which the surfaces/objects likely to be soiled with blood or body fluids can be associated with the potential for transmission of Human Immunodeficiency Virus Type 1 (HIV-1) (associated with AIDS), Hepatitis B Virus (HBV), or Hepatitis C Virus (HCV).

**SPECIAL INSTRUCTIONS FOR CLEANING AND DECONTAMINATION AGAINST HIV-1, HBV, and HCV ON SURFACES/OBJECTS SOILED WITH BLOOD/BODY FLUIDS.**

**Personal Protection:** Disposable latex, vinyl, nitrile or safety gloves, gowns, face masks, and eye coverings, must be worn during all cleaning of body fluids, blood, and decontamination procedures. **Cleaning Procedures:** Blood and body fluids must be thoroughly cleaned from surfaces and objects before application of this product. **Contact Time:** Allow surface to remain visibly wet for 1 minute to kill HIV-1, 5 minutes to kill HBV & HCV. **Disposal of Infectious Material:** Blood and other body fluids must be autoclaved and disposed of according to Federal, State, and local regulations for infectious waste disposal.

**TO KILL FUNGI:**

- Pre-clean visibly soiled areas.
- Apply product to hard, non-porous surfaces until visibly wet.
- Allow surface to remain visibly wet for 10 minutes. Wipe surfaces (or let air dry).

**FOR USE AS A CLEANER/DISINFECTANT IN FOOD PROCESSING PLANTS:**

- Before using this product in food processing areas, food products and packaging materials must be removed from the room or carefully protected.
- For visibly soiled areas, thoroughly clean surface prior to disinfecting.
- Spray evenly from 6-8 inches over hard, non-porous non-food contact surfaces. Be sure to wet all surfaces thoroughly.

(Note to reviewer: Text appearing in parenthesis is done to show optional text. Brackets indicate an interchangeable option, at least one of which is to be selected. **Bold, Italicized text is information for the reviewer and is not part of the label.**)

- Allow product to remain visibly wet on surface for 3 minutes. For *Listeria monocytogenes* or \*\*antibiotic-resistant bacteria a 10 minute contact time is required.
- Wipe with clean cloth, sponge, or paper towel.
- In case of contact with a food contact surface, rinse surfaces thoroughly with potable water.

#### **FOR USE TO CLEAN AND DISINFECT BARBER AND BEAUTY/MANICURE INSTRUMENTS AND TOOLS:**

- Pre-clean visibly soiled items.
- Spray hard, non-porous surfaces of instruments and tools from 6-8 inches until visibly wet.
- All surfaces must remain visibly wet for [three] [3] minutes. For *Listeria monocytogenes* or \*\*antibiotic-resistant bacteria a [ten] [10] minute contact time is required.
- Rinse surfaces thoroughly and let air dry before reuse.

**NOTE:** Rinse, dry and keep instruments in a clean, non-contaminated receptacle until use. Prolonged contact may cause damage to instruments.

#### **FOR TREATMENT OF ANIMAL HOUSING FACILITIES (INCLUDING POULTRY BARNES):**

- Remove all animals and feeds from areas being treated.
- Remove all litter and manure from floors, walls and surfaces of barns, pens, stalls, chutes, and other facilities occupied or traversed by animals.
- Empty or cover all troughs, racks and other feeding and watering appliances.
- Thoroughly clean all surfaces with soap or detergent and rinse with water.
- Spray from 6-8 inches floors, walls, cages, and other washable hard, non-porous non-food contact surfaces until visibly wet. To disinfect, all surfaces must remain visibly wet for 3 minutes. For *Listeria monocytogenes* or \*\*antibiotic-resistant bacteria a 10 minute contact time is required.
- Spray from 6-8 inches all halters, ropes, and other types of equipment used in handling and restraining animals, as well as forks, shovels, and scrapers used for removing litter and manure.
- Ventilate buildings and other closed spaces. Do not house animals or re-employ equipment until product has dried.
- For disinfection of feed racks, troughs, automatic feeders, fountains, and watering appliances spray from 6-8 inches until visibly wet, then let stand for 3 minutes. For *Listeria monocytogenes* or \*\*antibiotic-resistant bacteria a 10 minute contact time is required. Then thoroughly scrub all treated surfaces with soap or detergent and rinse with potable water before reuse.

#### **TO CLEAN, DISINFECT AND DEODORIZE (KITCHEN) (BATHROOM) (HOUSEHOLD) HARD, NON-POROUS NON-FOOD CONTACT SURFACES:**

- Remove visible soil.
- Spray 6-8 inches from hard, non-porous surfaces until visibly wet. Do not breathe

spray.

- All surfaces must remain visibly wet for [three] [3] minutes. For *Listeria monocytogenes* or **\*\*antibiotic-resistant bacteria** a [ten] [10] minute contact time is required.
- Wipe dry (with a clean cloth) (or let air dry).

**TO SANITIZE NON-FOOD CONTACT SURFACES:**

- Pre-clean visibly soiled hard non-porous surfaces.
- Apply Use Solution until visibly wet.
- All surfaces must remain visibly wet for 1 minute.
- Wipe surfaces (or let air dry).
- Not for use on food contact surfaces or on food preparation areas.

NOTE: Do not use on glassware, utensils, or dishes.

**TO SPOT SANITIZE SOFT SURFACES<sup>1</sup>:**

- Pre-clean surfaces.
- Spray soft surfaces<sup>1</sup> from 6-8 inches until thoroughly wet.
- Allow surfaces to remain visibly wet for [three] [3] minutes.
- Let air dry.

**TO REMOVE MOLD STAINS AND MILDEW STAINS:**

- Pre-clean visibly soiled surfaces.
- Spray mold and mildew stains on hard, non-porous surfaces until thoroughly wet.
- (Rinse clean with water.) (Wipe with a clean cloth or) let air dry.
- Repeat application as necessary.

**FOR USE AS A CLEANER/DEGREASER:**

- Apply to hard, non-porous surfaces.
- [Wipe (surfaces) dry (with a clean cloth)] [(or let air dry)].

**FOR USE AS A DEODORIZER:**

- Apply to hard, non-porous surfaces.
- Let stand for [ten] [10] minutes.
- Wipe surfaces or let air dry.

**FOR USE AS A CLEANER IN FOOD PROCESSING PLANTS:**

- Before using this product in food processing areas, food products and packaging materials must be removed from the room or carefully protected.
- Spray evenly from 6-8 inches over hard, non-porous non-food contact surfaces. Be sure to wet all surfaces thoroughly.
- Wipe with clean cloth, sponge, or paper towel.
- In case of contact with a food contact surface, rinse surfaces thoroughly with potable water.



**FOR USE AS A CARPET CLEANER (SPOTTER):**

- Apply a small amount to stain.
- Agitate with bone scraper and let stand for 3-5 minutes.
- Blot dry and rinse with clean water.
- Repeat as needed until the stain is completely removed.

Always test first in an inconspicuous area. To test: Apply a small amount, press with an absorbent white cloth for 10 seconds and see if there is any dye transfer.

**FOR USE IN CARPET CLEANING (PRE-SPRAY):**

- Vacuum carpet thoroughly prior to application.
- Apply evenly to carpet surfaces through a coarse hand pump or trigger spray device. Do not breathe spray.
- Let dwell for 5-10 minutes.
- Extract carpeting per manufacturer's instructions.
- Allow to dry thoroughly before resuming foot traffic.

Always test first in an inconspicuous area. To test: Apply a small amount, press with an absorbent white cloth for 10 seconds and see if there is any dye transfer.

**FOR USE AS A GLASS CLEANER:**

- Spray evenly on glass surfaces. Do not breathe spray.
- Wipe dry with an absorbent cloth or towel.

**TOILET BOWL AND URINAL CLEANING DIRECTIONS:**

Empty water out of toilet bowl urinal and apply this product to exposed surfaces, including under the rim with a toilet [brush] [mop], (cloth) (or) (sponge), [low pressure mechanical spray device,] [[hand pump] [coarse] [trigger spray] device]. For spray application, spray 6-8 inches from surface. Do not breathe spray. Brush or swab thoroughly, then flush.

## **STORAGE AND DISPOSAL**

Do not contaminate water, food or feed by storage or disposal.

**PESTICIDE STORAGE:** Store this product in a cool [dry] area, [away from direct sunlight and heat] to avoid deterioration.

**PESTICIDE DISPOSAL:** Wastes resulting from the use of this product must be disposed of on site or at an approved waste disposal facility.

***CONTAINER HANDLING - One or more of the following paragraphs for Container Handling will be selected, depending on packaging type and use area:***

***For institutional/medical/commercial use containers or institutional/medical/commercial with residential use containers***

**CONTAINER HANDLING:** Non-refillable container. Do not reuse or refill this container (except with a refill container). Offer for recycling or reconditioning, if appropriate, or dispose of in a sanitary landfill or by incineration.

***For residential use only containers***

**CONTAINER HANDLING:** Non-refillable container. Do not reuse or refill this container (except with a refill container). Offer for recycling or discard in trash.

***For 2.5 gallon bladder in box***

**CONTAINER HANDLING:** Non-refillable container. Do not reuse or refill this container (except with a refill container). Completely empty bag into application equipment, then offer for recycling if available or dispose of empty bag and corrugated box in a sanitary landfill or by incineration.

***For 275 gallon, 300 gallon or 330 gallon tote***

**CONTAINER HANDLING:** Refillable container. Refill this container with (this product) only. Do not reuse this container for any other purpose. Cleaning the container before final disposal is the responsibility of the person disposing of the container. Cleaning before refilling is the responsibility of the refiller. To clean the container before final disposal, empty the remaining contents from this container into application equipment or a mix tank. Fill container about 10 percent full with water. Agitate vigorously or recirculate water with the pump for 2 minutes. Pour or pump rinsate into application equipment or rinsate collection system. Repeat this rinsing procedure two more times. When empty, return to point of sale or puncture or dispose of in a sanitary landfill, or by other procedures approved by state and local authorities.

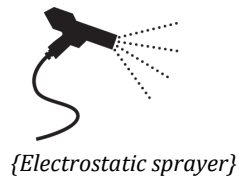
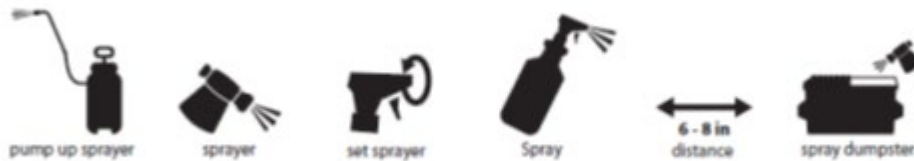
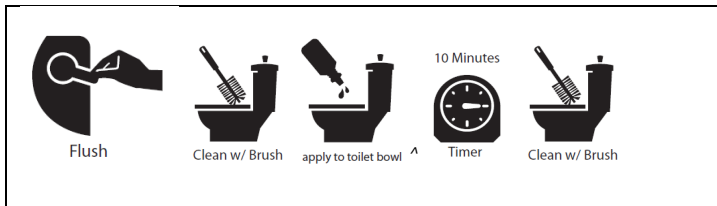
(Note to reviewer: Text appearing in parenthesis is done to show optional text. Brackets indicate an interchangeable option, at least one of which is to be selected. ***Bold, Italicized text is information for the reviewer and is not part of the label.***)

### ***Qualifier Symbol Table***

§	<b><i>This leads to the disinfection directions for use.</i></b>
#	<b><i>The words “pathogens” and “Pathogenic microorganism” will be qualified with bacteria and viruses from the Microorganisms Claims section.</i></b>
**	<b><i>This will lead to the antibiotic resistant bacteria from the Microorganisms Claims section with the same qualifier symbol</i></b>
*	<b><i>The virus claimed will be listed with the same qualifier symbol</i></b>
±	<b><i>Where the short form of SARS-CoV-2 is used it will lead back to the full name of the virus</i></b> in 30 seconds on hard, nonporous surfaces.
¶	allow to come to room temperature first <b><i>If items are listed in a grouping the qualifier symbol may appear only once</i></b>
β	<b><i>non-food contact surfaces</i></b>
^	above the waterline
¥	<b><i>Leads to the terminal rinse sterilant statement after the Directions for Use header</i></b>
1	For spot surface sanitization of cotton or polyester
π	Electrostatic spray application is only for viral claims with a 5 minute or less contact time

(Note to reviewer: Text appearing in parenthesis is done to show optional text. Brackets indicate an interchangeable option, at least one of which is to be selected. ***Bold, Italicized text is information for the reviewer and is not part of the label.***)

***These are representative icons for use sites/application methods that may optionally appear on the label with the appropriate directions for use or package type.***



***(above graphics must be accompanied by Carpet Cleaning/Spotter directions)***



Clean wall icon

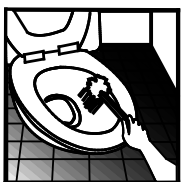


Hard, nonporous surfaces

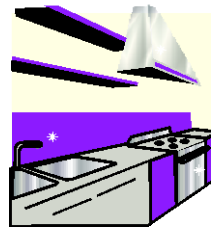
Glass icon



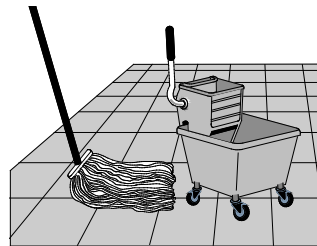
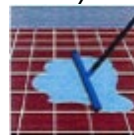
Bathroom icons



Kitchen icons



Floor/mopping icons

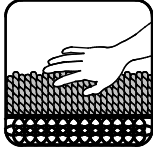


(Note to reviewer: Text appearing in parenthesis is done to show optional text. Brackets indicate an interchangeable option, at least one of which is to be selected. ***Bold, Italicized text is information for the reviewer and is not part of the label.***)

*Floor icon*



*Rug icon (for use with Carpet Spotter directions)*



*Safety glasses icon*



*Child drowning warning icon*



*Barber/Salon Tools icon*



*Animal housing icon*



*Locker room icon*



*Recycle icon*



*Optional Kosher certification logo*



*Public Restroom/Locker Room Facilities icon*

(Note to reviewer: Text appearing in parenthesis is done to show optional text. Brackets indicate an interchangeable option, at least one of which is to be selected. ***Bold, Italicized text is information for the reviewer and is not part of the label.***)

***Optional NSF certification logo***



***Optional Marketing Logos***



(Note to reviewer: Text appearing in parenthesis is done to show optional text. Brackets indicate an interchangeable option, at least one of which is to be selected. ***Bold, Italicized text is information for the reviewer and is not part of the label.***)

## Emerging Viral Pathogen Claims

This product qualifies for emerging viral pathogen claims per the EPA's "Guidance to Registrants: Process for Making Claims Against Emerging Viral Pathogens not on EPA-Registered Disinfectant Labels" when used in accordance with the appropriate use directions indicated below.

***[Insert Product name]*** [This product] meets the criteria to make claims against emerging pathogen claims from the following viral categories:

- Enveloped viruses
- Large non-enveloped viruses
- Small non-enveloped viruses

<b><i>The parenthetical surrogate virus phrase is required text. For an emerging viral pathogen that is a/an...</i></b>	<b><i>...follow the directions for use for the following organisms on the label</i></b>
Enveloped virus	Rhinovirus Type 37
Large, non-enveloped virus	Rhinovirus Type 37
Small, non-enveloped virus	Norovirus (Feline Calicivirus as the surrogate)

***[Insert Product Name]*** [This product] has demonstrated effectiveness against viruses similar to **insert name of emerging virus** on hard, nonporous surfaces. Therefore, [product name] [this product] can be used against **insert name of emerging virus** when used in accordance with the directions for use against **Norovirus -or- Rhinovirus Type 37** on hard, nonporous surfaces. Refer to the CDC -or- OIE website at **insert pathogen-specific website address** for additional information.

**Insert name of illness/outbreak** is caused by **insert name of emerging virus**. **Product name** [This product] kills similar viruses and therefore can be used against insert name of emerging virus when used in accordance with the directions for use against **Norovirus -or- Rhinovirus Type 37** on hard, nonporous surfaces. Refer to the CDC -or- OIE website at **insert pathogen-specific website address** for additional information.