



U.S. ENVIRONMENTAL PROTECTION AGENCY
Office of Pesticide Programs
Registration Division (H7505C)
401 "M" St., S.W.
Washington, D.C. 20460

EPA Reg. Number:

45385-20203

Date of Issuance:

16 MAY 1996

NOTICE OF PESTICIDE:
 Registration
 X Reregistration

Term of Issuance:

UnConditional

(under FIFRA, as amended)

Name of Pesticide Product:

Chem-Tox Roach Kill Powder

Name and Address of Registrant (include ZIP Code):

Chem-Tox, Inc,
481 Scotland Road
McHenry, IL 60050

Note: Changes in labeling differing in substance from that accepted in connection with this registration must be submitted to and accepted by the Registration Division prior to use of the label in commerce. In any correspondence on this product always refer to the above EPA registration number.

On the basis of information furnished by the registrant, the above named pesticide is hereby registered/reregistered under the Federal Insecticide, Fungicide and Rodenticide Act.

Registration is in no way to be construed as an endorsement or recommendation of this product by the Agency. In order to protect health and the environment, the Administrator, on his motion, may at any time suspend or cancel the registration of a pesticide in accordance with the Act. The acceptance of any name in connection with the registration of a product under this Act is not to be construed as giving the registrant a right to exclusive use of the name or to its use if it has been covered by others.

Based on your response to the Reregistration Eligibility Documents, EPA has reregistered the product listed above. With regards to labeling, you must make the labeling changes listed below:

- 1. Revise the Precautionary Statements to read:

"Harmful if swallowed or absorbed through the skin. Causes eye irritation. Avoid contact with skin, eyes, or clothing. Wash thoroughly with soap and water after handling."

- 2. Revise the Statement of Practical Treatment to read:

If swallowed: Call a physician or Poison Control Center. Drink 1 or 2 glasses of water and induce vomiting by touching back of throat with finger. If person is unconscious, do not give anything by mouth and do not induce vomiting.

If in Eyes: Flush eyes with plenty of water. Call a physician if irritation persists.

If on Skin: Wash with plenty of soap and water. Get medical attention.

Signature of Approving Official:

RPK

Date:

16 MAY 1996

3. Submit two copies of your final printed labeling before you release the product for shipment. Refer to the A-79 Enclosure for a further description of final printed labeling.

4. Enclosed is a copy of your label stamped "Accepted with Comments." This action is taken under the authority of section 4(g)(2)(C) of the Federal Insecticide, Fungicide, and Rodenticide Act, as amended. Registration under this section does not eliminate the need for control reassessment of pesticides. EPA may require submission of data at any time to maintain the registration of your product.

Sincerely,

RPK

Richard P. Keigwin, Jr.
Product Manager 10
Insecticide-Rodenticide Branch
Registration Division (7505c)

12

10

383

ACCEPTED
with COMMENTS
In EPA Letter Dated

126 MAY 1966

Under the Federal Insecticide,
Fungicide, and Rodenticide Act
as amended, this pesticide
registered under EPA Reg. No.
45385-20203

DIRECTIONS FOR USE:

It is a violation of the Federal Law to use this product in a manner inconsistent with its labeling.

To control cockroaches, ants and silverfish, apply liberally, scattering under and behind refrigerator, stove, sink, dishwasher, washing machine and dryer, tubs; into openings around drains, water pipes and electrical conduits; and in cracks and crevices along baseboards and corners of cabinets, cupboards, and closets. Remove all lower drawers in kitchen and bathroom cabinets, bedroom dressers and chests of drawers, then scatter liberally in drawer wells.

Reapply as necessary. Any powder visible after application must be brushed into cracks and crevices or removed. Apply only in areas inaccessible to children and pets. Avoid contamination of feed and foodstuffs.

Directions for Applying in New Construction to Control Cockroaches: When treating large areas, such as wall voids, soffit and subcabinet voids in new and existing construction, dust liberally using dusting application equipment.

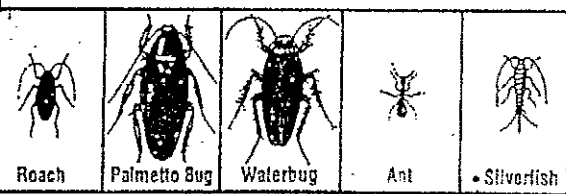
Directions for Applying as a Spot Solution to Control Cockroaches: Add 1 cup of powder to each gallon of rise water. Apply to floor areas only. Make only enough for each application. Supplemental treatment only.

This product may be used in homes, restaurants, and other food and feed handling establishments, markets, schools, warehouses, factories, offices, hotels, motels, hospitals, nursing homes, garages, grocery stores, apartment buildings, new construction, industrial plants, theatres, ships, boats, trains, trucks, yachts, camps, mobile homes, buses, toots, kennels, military bases, libraries, utilities and sewers.

DIRECTIONS FOR USE CONTINUED ON BACK PANEL.

CHEM-tox

**PRO!
ROACH KILL
POWDER**



ACTIVE INGREDIENTS:	
Orthoboric Acid	99.0%
Inert Ingredients	1.0%
Total:	100.0%

STATEMENT OF PRACTICAL TREATMENT
Immediately contact Poison Control Center or Physician if swallowed. If eye contact occurs, flush eyes with plenty of water. Get medical attention if irritation persists.

**KEEP OUT OF REACH OF CHILDREN
CAUTION**
Read back panel for complete precautions.

NET: 16 oz.

**PRECAUTIONARY STATEMENT
HAZARDS TO HUMANS
& DOMESTIC ANIMALS**
Not for internal use.
Keep away from domestic animals.
CAUTION:

Harmful if swallowed.
May cause eye irritation. Avoid eye contact.
Wash thoroughly after handling.

STORAGE AND DISPOSAL
Do not contaminate water, food or feed by storage or disposal.
Storage: Store in a dry place. Do not store where children or animals may gain access.

Pesticide Disposal: Wastes resulting from the use of this product may be disposed of on site or at an approved waste disposal facility.
Container Disposal: Completely empty bag into application equipment, then dispose of empty bag in a sanitary land fill or by incineration, or, if allowed by State and local authorities, by burning. If burned, stay out of smoke.

Bottle oversized to aid in squeezing out enclosed product.
This package is sold by weight. Some settling of contents may have occurred during shipment.

ORDER CODE: P-401
EPA Reg. No. 45385-20203
EPA Est. No. 45385-IL-01

CHEM-TOX, INC.
461 SCOTLAND ROAD
MCHENRY, ILLINOIS 60050

Directions for Use Continued

CRACK AND CREVICE TREATMENT
Food and Feed Handling Areas - Do not apply in private residences in which food is prepared or served.

FOOD AREA APPLICATION
CRACK AND CREVICE TREATMENT

Includes areas for receiving, storing, wrapping, boxing, and enclosing processing systems (e.g., syrups). Serving areas (where food is prepared) also would be covered. Apply in small amounts using a bulbous duster or brush, applying insecticide directly into cracks and crevices between different pieces of equipment and floors, open spaces in walls, equipment, pipes, housing and electrical switch boxes.

Care should be taken to avoid contamination of food or feed. **APPLICATION OF THIS PRODUCT IN FOOD HANDLING ESTABLISHMENTS**
CRACK AND CREVICE TREATMENT
Serving Areas - Facilities such as dining rooms, but not food preparation areas, should be prepared or held.

Apply as a spot treatment to baseboards, under elements of equipment, and in other cracks and crevices. Avoid treating surfaces where food is prepared. (Do not apply when facility is in use.)
Non-Food Areas - Include areas around drains (to sewer entries and under machine rooms, boiler rooms, etc.) after canning or bottling. Apply to baseboard areas behind and beneath sinks, and in areas where insects hide or