


PM 31

45168-6

1/7

US ENVIRONMENTAL PROTECTION AGENCY OFFICE OF PESTICIDES PROGRAMS REGISTRATION DIVISION (TS-767) WASHINGTON, DC 20460	EPA REGISTRATION NO. 45168-6	DATE OF ISSUANCE JUN 21 1996
	TERM OF ISSUANCE JUN 21 1996	
NOTICE OF PESTICIDE: <input type="checkbox"/> REGISTRATION <input type="checkbox"/> REREGISTRATION (Under the Federal Insecticide, Fungicide, and Rodenticide Act, as amended)	NAME OF PESTICIDE PRODUCT VC 17m Teflon Antifouling Bottom Paint Red V10E	
	NAME AND ADDRESS OF REGISTRANT (Include ZIP code)	
Courtaulds Coatings, Inc. 2270 Morris Ave. Union, NJ 07083		
NOTE: Changes in labeling formula differing in substance from that accepted in connection with this registration must be submitted to and accepted by the Registration Division prior to use of the label in commerce. In any correspondence on this product always refer to the above U.S. EPA registration number.		
On the basis of information furnished by the registrant, the above named pesticide is hereby Registered/Reregistered under the Federal Insecticide, Fungicide, and Rodenticide Act.		
A copy of the labeling accepted in connection with this Registration/Reregistration is returned herewith.		
Registration is in no way to be construed as an indorsement or approval of this product by this Agency. In order to protect health and the environment, the Administrator, on his motion, may at any time suspend or cancel the registration of a pesticide in accordance with the Act. The acceptance of any name in connection with the registration of a product under this Act is not to be construed as giving the registrant a right to exclusive use of the name or to its use if it has been covered by others.		
This product is conditionally registered in accordance with FIFRA sec. 3(c)(7)(A) provided that you:		
1. Submit/cite all data required for registration of your product under FIFRA section 3(c)(5) when the Agency requires all registrants of similar products to submit such data.		
2. Add the phrase, "EPA Registration No. 45168-6 " to your label before you release the product for shipment.		
The revised Confidential Statement of Formula dated February 20, 1996, is in compliance with PR Notice 91-2, it agrees with the label and is acceptable.		
The product chemistry data for this product is acceptable.		
3. Submit five (5) copies of your final printed labeling before you release the product for shipment. Refer to the A-79 enclosure for a further description of final printed labeling.		
If these conditions are not complied with, the registration will be subject to cancellation in accordance with FIFRA sec. 6(e). Your release for shipment of the product constitutes acceptance of these conditions.		
<input type="checkbox"/> ATTACHMENT IS APPLICABLE		
SIGNATURE OF APPROVING OFFICIAL		DATE
		

A stamped copy of the label is enclosed for your records.

Sincerely,



Marion J. Johnson
Product Manager 31
Antimicrobial Program Branch
Registration Division (7505C)

Enclosures

**PRECAUTIONARY STATEMENTS
HAZARDS TO HUMANS AND DOMESTIC ANIMALS**

WARNING

Causes eye irritation. Harmful if absorbed through skin. Avoid contact with skin, eyes or clothing. Wear protective clothing such as gloves, long-sleeved cotton shirt, long pants, and hat. May be fatal if swallowed or inhaled. Do not breathe dust, vapor or spray mist. While spraying paint or sanding or sand blasting boat surfaces, wear a mask or a respirator jointly approved by the Mining Safety & Health Administration and the National Institute of Occupational Safety and Health. Remove contaminated clothing and wash before reuse. Wash thoroughly with soap and water after handling.

STATEMENT OF PRACTICAL TREATMENT

IF SWALLOWED: Drink promptly a large quantity of water. Avoid alcohol. Get medical attention.

IF ON EYES: Flush eyes with plenty of water. Get medical attention.

IF ON SKIN: Wash with plenty of soap and water. Get medical attention.

IF INHALED: Remove victim to fresh air. If not breathing give artificial respiration, preferably mouth-to-mouth. Get medical attention.

ENVIRONMENTAL HAZARD

This pesticide is toxic to fish. Do not apply directly to water by cleaning of equipment or disposal of wastes. Do not allow chips and dust generated during paint removal to enter water. Dispose of paint debris in an approved landfill. Do not discharge effluent containing this product into lakes, streams, ponds, estuaries, oceans and other waters unless in accordance with the requirements of a National Pollution Discharge Elimination System (NPDES) permit and the permitting authority has been notified in writing prior to discharge. Do not discharge effluent to sewer system without previously notifying the local sewage treatment plant authority. For guidance contact your State Water Board or Regional Office of the EPA.

PHYSICAL OR CHEMICAL HAZARD

Flammable. Keep away from heat and open flame.

STORAGE AND DISPOSAL

Do not contaminate water, food or feed by storage or disposal.

PESTICIDE DISPOSAL: Open dumping is prohibited. Pesticide, spray mixture, or rinsate that cannot be used or chemically reprocessed should be disposed of according to procedures approved by Federal, State or local disposal authorities.

CONTAINER DISPOSAL: Triple rinse (or equivalent). Then offer for recycling or reconditioning, or puncture and dispose of in a sanitary landfill, or by other procedures approved by state and local authorities.

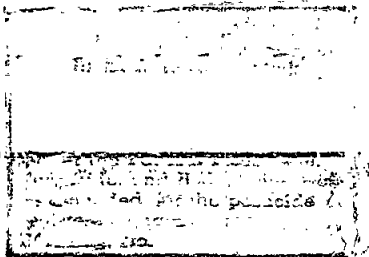
FOR CHEMICAL EMERGENCY, SPILL, LEAK, EXPOSURE OR ACCIDENT

CALL TOLL FREE: CHEMTREC 1-800-424-9300 (DAY OR NIGHT)

MEDICAL ADVISORY: CONTACT YOUR LOCAL POISON CONTROL CENTER

OR

CALL 1-800-854-6813



JUN 21 1996

45768-1

VC 17m

TEFLON ANTIFOULING BOTTOM PAINT

RED 107E

KEEP OUT OF REACH OF CHILDREN
WARNING

Copper Powder Bag Inside Cap
~~Mix Powder and Liquid Before Use~~

		%
ACTIVE INGREDIENT(S):		
Copper Powder	=	20.35
INERT INGREDIENTS:	=	<u>79.65</u>
TOTAL=		100.00

JUN 21 1996

45168-6

EPA Registration No. 45168-

EPA Establishment No. 45168-NJ-1

See side panel for additional precautionary statements

Net Contents: 0.75 U.S. QUART (0.710 LITERS)

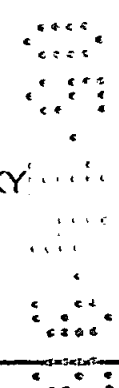
DISCLAIMER: The performance of any marine coating depends on many factors outside the control of Courtaulds Coatings Inc. including the surface preparation, proper application and the environmental conditions. Therefore, Courtaulds Coatings Inc. cannot guarantee the suitability of this product for your particular purpose or application. **IMPLIED WARRANTIES OF FITNESS FOR A PARTICULAR PURPOSE AND MERCHANTABILITY ARE EXCLUDED. COURTAULDS COATINGS INC. SHALL NOT UNDER ANY CIRCUMSTANCES BE LIABLE FOR INCIDENTAL OR CONSEQUENTIAL DAMAGES.** By purchase or use, of the product, buyer agrees that the sole and exclusive remedy, if any, is limited to the refund of the purchase price or replacement of the product at Courtaulds Coatings Inc.'s option.

Manufactured for Extensor AB
Courtaulds Coatings Inc.
 400 S. 13th Street, Louisville, KY 40203

Union, NJ

Houston, TX

Louisville, KY



VC17M TEFLON ANTIFOULING BOTTOM PAINT

DIRECTIONS FOR USE:

It is a violation of Federal law to use this product in a manner inconsistent with its labeling.

PRODUCT DESCRIPTION:

VC17m is a reduced friction, low drag finish antifouling paint for fresh water or cold saltwater. It will prevent buildup of marine fouling organisms such as barnacles, zebra mussels, teredos and algae. The friction reducing property of VC17m is a function of its Teflon base and pigmentation system. When applied, VC17m will immediately give a thin super smooth "slip" finish, that would traditionally take days of tiresome sanding. VC17m no longer contains 1,1,1, Trichloroethane, which means it will dry slower and will improve the flow to give you a smoother finish. The new formula also reduces overspray and dry spray. When it's time to recoat VC17m no sanding is required. Just wash with fresh water, let dry and reapply VC17m. VC17m goes on 8 times thinner than traditional antifouling paint which virtually eliminates film buildup. VC17m can be used on fiberglass, wood and properly primed metal boat hulls (except aluminum), below the waterline. VC 17m is recommended for use in fresh water and low fouling saltwater. Do not use VC17m in difficult fouling areas.

TECHNICAL INFORMATION:

Drying Time: 5-10 minutes

Coverage: Approximately 85 sq. ft./quart

Thinner: VC General Thinner V170

Application Tools: Short nap solvent resistant roller or electric airless spray

Color:

(V107E) Red: At application - reddish copper bronze. Changes to bright burnt red after several weeks of immersion.

(V108E) Bronze: At application - bronze. Stays bronze but may pick up a greenish patina at the waterline.

Number of Coats:

Low Fouling Cold Saltwater - Three coats the first season and two coats each season to follow.

Freshwater - Two coats the first season and one coat each season to follow.

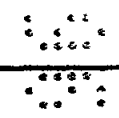
SURFACE PREPARATION:

BARE FIBERGLASS (POLYESTER OR VINYLESTER)

It is very important that bare fiberglass be prepared properly to prevent delamination of antifouling paint. Scrub the surface thoroughly with soap and water using a stiff brush, or use INTERLUX ABRASIVE CLEANER YMA600. Flush well with fresh water. Wipe a small area with a clean rag that has been wetted with FIBERGLASS SOLVENT WASH 202 or VC GENERAL THINNER V170. While the surface is still wet, wipe with a clean dry rag. Continue this process until the entire surface has been cleaned. To be certain all wax and other contaminants have been removed, run water over the surface. If the water beads up or separates, wipe surface again with INTERLUX FIBERGLASS SOLVENT WASH 202 or VC GENERAL THINNER V170. When the water sheets off, all contamination has been removed. Sanding does not remove surface contamination. After the surface has been properly cleaned, matte sand with 320 grit sandpaper, or apply one coat of VC NO-SAND PRIMER V129. Then apply 2-3 coats of VC17m.

JUN 21 1996

45168-6



6/7

PREVIOUSLY PAINTED SURFACES

HARD ANTIFOULING PAINTS - Due to the porosity of hard antifouling paints, it will need to be sanded several times to reach an acceptable surface for application of **VC17m**. Begin sanding with 80 grit sandpaper and work through the sandpaper grades until a final sanding with 320 grit sandpaper is reached. Wipe the surface with **VC GENERAL THINNER V170** to remove sanding residue and apply 2-3 coats of **VC17m**.

SOFT ANTIFOULING PAINTS - Soft antifouling paints should be removed prior to application of **VC17m**.

UNDERWATER METALS - Underwater metals must be primed to avoid contact with copper bottom paints. (Not for aluminum). Grind or sand blast to bright metal, clean thoroughly with **VC GENERAL THINNER V170** and overcoat within one hour with the first coat of **VC-TAR**. Apply 3-5 additional coats taking care to follow the label directions as to overcoating time. Apply **VC17m** within 48 hours of the last coat of **VC-TAR**. If you cannot apply **VC-TAR** within one hour of blasting, apply one thin coat of **INTERLUX VINYL-LUX PRIMEWASH 353/354** prior to application of **VC-TAR**.

BARE WOOD - Sand smooth with 80-100 grit sandpaper, and wipe with **VC-GENERAL THINNER V170**. Apply 3 coats of **VC17m**.

Mixing

Empty the contents of the copper bag (found under the blue lid) into the base. Mix thoroughly. Stir occasionally during application.

Application

VC17m is applied with a short nap roller, 4-6" wide or an electric airless spray gun. For rolling, pour only small amounts of the paint into the steel rolling tray. Roll with a fairly dry roller. Roll quickly and in one direction only. For spraying, make sure that the nozzle tip is not more than 6-8 inches from the hull. **VC17m** should be applied wet. Do not dry spray. Do not use conventional spray equipment as this may result in dry spray.



**FOR INFORMATION CALL 1-908-686-1300 OR WRITE TO:
VC Systems, 2270 MORRIS AVENUE, UNION, NJ 07083**

ADDRESSED
with COMMENTS
to EPA Letter Order
JUN 21 1996
Under the...
Fungicide...
45168-6

7/7

VC 17m Antifouling Bottom Paint

COPPER POWDER V901

To be Mixed with Liquid Component of the following products only:

VC 17m Antifouling Bottom Paint V107E Red
&
VC 17m Antifouling Bottom Paint V108E Bronze

	Powder %
ACTIVE INGREDIENT(S):	
Copper Powder =	100.00
INERT INGREDIENTS: =	0.00
TOTAL =	100.00

EPA Registration No. 45168-
EPA Establishment No. 45168-NJ-1

**KEEP OUT OF REACH OF CHILDREN
DANGER**

See outside container for precautionary statements

Directions For Use

Mix contents of this bag with paint immediately prior to use.
See outer container for additional Directions For Use.

Bag Disposal: Wrap empty bag in newspaper and discard in trash.

Net Contents: 145 grams

Manufactured for Extensor AB
Courtaulds Coatings Inc.
400 So. 13th Street
Louisville, KY 40203

ACCEPTED
with COMMENTS
in EPA Letter #1070

JUN 21 1996

Under the authority of the
EPA Administrator, the
as amended, for the purpose
conducted under EPA Reg. No.

45168-1a