

DUEL
PRECAUTIONARY STATEMENTS
HAZARDS TO HUMANS & DOMESTIC ANIMALS
CAUTION

Harmful if swallowed or absorbed through the skin. Avoid contact with eyes, skin or clothing. Cover or remove exposed foods. Avoid contamination of cooking utensils and food preparation surfaces. Remove pets, birds, and cover fish aquariums before spraying. Avoid contamination of food and food stuffs. Food should be removed or covered during treatment. All food processing surfaces should be covered during treatment or thoroughly cleaned before using. When using the product in these areas, apply only when the facility is not in operation. In case of contact, immediately flush eyes and skin with plenty of water for at least 15 minutes. For skin and eyes call physician.

PHYSICAL OR CHEMICAL HAZARDS
 Contents under pressure. Do not puncture or incinerate container. Do not use or store near heat or open flame. Exposure to temperatures above 130° may cause bursting.

ENVIRONMENTAL HAZARDS
 This product is toxic to fish, birds and other wildlife. Keep out of lakes, streams or ponds. Do not contaminate water by disposal of wastes. Apply the product only as specified on this label.

DIRECTIONS FOR USE

It is a violation of Federal Law to use this product in a manner inconsistent with its labeling. **SHAKE WELL BEFORE EACH USE.** Remove protective cap, aim spray opening away from persons. Push button to spray.

TO KILL HOUSEFLIES, MOSQUITOES, AND GNATS: INDOORS: Close all doors and windows. Point nozzle upwards, direct the spray mist to all parts of the room, especially windows and other light sources which attract these insects. Fill the room with mist, then leave the treated area. Keep the room closed for at least 15 minutes. Ventilate room when treatment is completed.

TO REDUCE ANNOYANCE FROM FLYING INSECTS: OUTDOORS: Reduce mosquitoes, gnats, (midges), houseflies, deer flies and flying moths (millers) by spraying their resting areas. Follow precautions listed above. Hold container 18 to 24 inches from shrubs, bushes and grassy areas. Spray these areas with a slow sweeping motion at the rate of from 1 to 3 seconds per cubic feet of space while moving away from the treated areas. To reduce annoyance from these flying insects, treat open porches and patios in a similar manner. Spray only when the air is still. Allow spray to dissipate before occupying the treated area. Repeat as necessary.

TO KILL ROACHES, EARWIGS, GRAIN MITES, SOWBUGS, SPIDERS, AND CENTIPEDES: **CONTACT SPRAY:** Spray thoroughly into hiding places such as cracks, crevices, moist areas, openings around pipes and sinks, under refrigerators, baseboards, and storage areas. Spray directly on insects where possible. Repeat as necessary.

RESIDUAL SPRAY: Spray baseboards, cracks, crevices, around door and window frames, and other hiding places such as closets, in back of and under appliances, sinks and cupboards in the kitchen and bathroom. In basements, spray hiding places in cracks and crevices, lower walls, dark places. Spray at the rate of 3 to 4 seconds per linear foot at a distance of 12 to 14 inches from the surface. Repeat as necessary.

TO KILL WASPS: Applications should be made in the late evening when insects are at rest. Spray liberally into hiding and breeding places, contacting as many insects as possible. Repeat as necessary.

TO KILL ANTS: Apply to ant trails and around door sills, window frames and other places where ants may enter.

ORNAMENTAL PLANT PESTS: Kills aphids, exposed thrips, leafhoppers, plant bugs, Japanese beetles on smaller evergreens, deciduous trees and shrubs as rhododendrons, pines, spruces, hemlock, yaws, arborvitae, junipers, holly, podocarpus, boxwood, laurel, lilac, spirea, dogwood, palm tree, toyon, viburnum, maple, locust, forsythia, althea and roses. Also kills mimosa webworm larvae on mimosa and oakworm larvae on oaks.

Kills aphids, exposed thrips, adult whiteflies, leafhoppers, plant bugs, spittlebugs, Japanese beetles on flowering plants such as peonies, iris, zinnia, snapdragons, ageratum, chrysanthemums, nasturtiums, daisy, geraniums, marigolds, daphne, fat-shrubs, ivy, tobira, queen sago, broadleaf acacia.

Direct spray on insects by holding the container 12 to 18 inches from the infested plants. Spray in short burst of 1 to 3 seconds or spray at the rate of one linear foot of growth per second. Direct spray to all sides, covering foliage until slightly moist. Avoid heavy wetting. Repeat applications as necessary. **USE WITH CAUTION** on the foliage of Flowering Quince, Juniper, Cypress, Mulberry, Ash, Coleoneaster, Rose, Camellia, Azalea, Pyrecaitha, and Caenothus, as certain varieties have shown some leaf browning.

STORAGE AND DISPOSAL

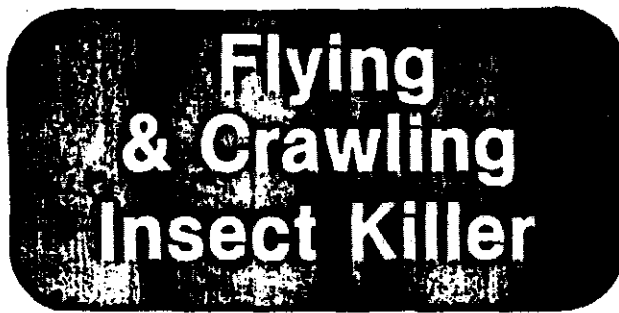
Do not store near heat or open flame. Do not reuse empty container. Wrap container and put in trash collection. Never throw container into fire or incinerator.

EPA Reg. No. 44446-8

EPA Est. No. 44446-TX-2

ITEM. 451

DUEL



Flying & Crawling Insect Killer

Double Action Insecticide
Residual & Contact Spray

Kills: Houseflies, Mosquitoes, Gnats, Wasps, Roaches, Earwigs, Grainmites, Sowbugs, Ants, FLEAS, Biting Flies, Aphids (Plant Lice), Leafhopper, Adult Whiteflies, Plant Bugs, Japanese Beetles, Spiders, Centipedes, Exposed Thrips, and Spittlebugs

KEEP OUT OF REACH OF CHILDREN
CAUTION
 See Additional Precautionary Statements on Back Panel

ACTIVE INGREDIENTS:
 * + Resmethrin (5-(phenylmethyl)-3-(furan-2-yl) methyl 2, 2-dimethyl-3-(2-methyl-1-propenyl) cyclopropanecarboxylate) 0.350%
 Related compounds 0.048%
INERT INGREDIENTS 99.602%
 * Cis/trans isomers ratio: max. 30% (±) Cis and min 70% (±) Trans.
 + U.S. Patent NOs. 3,465,007 and 3,542,828
 * Penick's SBP-1382 (R) brand of resmethrin insecticide, Penick Corp., 1050 Wall Street West, Lyndhurst, NJ 07071

NET WT. 15 OZ.

Manufactured By
QUEST Chemical Corporation
 15102 Sommermeyer
 Houston, Texas 77041

ACCEPTED
 SEP 10 1985
 Under the Federal Insecticide, Fungicide, and Plant Repellent Act
 Penick Corp. 44446-8

44446-8

09/10/1985

1/1