

**BOOTS
HERCULES**

RESTRICTED-USE PESTICIDE

For retail sale to and use only by certified applicators or persons under their direct supervision, and only for those uses covered by the certified applicator's certification.

MITAC E.C.

Insecticide/Miticide
(Contains 1.5 lb. Amitraz per gallon)

Active Ingredients

Amitraz (N-(2,4-dimethylphenyl)-N-
[[2,4,4-trimethylpentylidene]methyl]-
N-methylmethacrylamide)

Percent by Wt.

20.4

Inert Ingredients

79.6

Total 100.0%

ACCEPTED

OCT 17 1980

Under the Federal Insecticide, Fungicide, and Rodenticide Act, as amended, for this pesticide registered under EPA Reg. No. 43142-45

EPA REG. NO. 43142-45

**KEEP OUT OF THE REACH OF CHILDREN
WARNING**

STATEMENT OF PRACTICAL INFORMATION

If swallowed — If swallowed, do not induce vomiting unless directed to do so by a physician. Immediately call a physician if you experience any symptoms.

If in eyes — If in eyes, flush immediately with large amounts of water for at least 15 minutes. Call a physician immediately.

If on skin — Wash thoroughly with soap and water. If irritation develops, call a physician.

Note to Physician — If swallowed, do not induce vomiting unless directed to do so by a physician.

SEE THE LABEL FOR ADDITIONAL PRECAUTIONARY STATEMENTS



PRECAUTIONARY STATEMENTS

**HAZARDS TO HUMANS
(AND DOMESTIC ANIMALS)**

WARNING

**HARMFUL OR FATAL IF SWALLOWED
CAUSES EYE AND SKIN IRRITATION
DO NOT GET IN EYES, ON SKIN, OR ON CLOTHING.
AVOID BREATHING VAPORS OR SPRAY MIST.**

**REQUIRED CLOTHING AND EQUIPMENT FOR MIXING,
LOADING GROUND SPRAY APPLICATION
AND CLEAN-UP PROCEDURES:**

- 1) LONG-SLEEVE SHIRT (FINE WEAVE)
- 2) LONG PANTS (FINE WEAVE)
- 3) RUBBER GLOVES
- 4) BOOTS

Wear clean clothing each day and launder before reusing

IF ON CLOTHING — Remove contaminated clothing and wash affected parts of body with soap and water. If the extent of contamination is unknown, bathe entire body thoroughly and change clothing.

ENVIRONMENTAL HAZARDS:

This product is toxic to fish. Keep out of streams and ponds. Do not apply when weather conditions favor drift from treated areas. Do not contaminate water by cleaning equipment or disposing of wastes. Apply the rate shown on the label.

Beneficial Insect Cautions — Mite E.C. is a broad spectrum acaricide effective on the orange roughleg, Typhlodromus occidentalis, Amblyseius fallacis and mites of the family, etc.

PRECAUTIONS FOR AQUEOUS BRACKISH
Do not use in brackish water. Do not use in water containing less than 100 ppm of calcium. Do not use in water containing less than 100 ppm of magnesium. Do not use in water containing less than 100 ppm of sodium.

DIRECTIONS FOR USE

It is a violation of Federal law to use this product in a manner inconsistent with its labeling.

REENTRY STATEMENT — Reentry into treated areas is prohibited until leaves are completely dry or until 24 hours after application.

USE ON PEARS

When applied as directed, Mite E.C. will control pear psylla, European red mite and rust mite. Mite E.C. will also provide suppression of codling moth, two spotted spider mite and M. Daniels mite.

Mite E.C. can be applied by ground or air equipment, as directed on concentrate sprays. The recommended rates of application are based on thorough coverage with dilute sprays of 400 gallons from a conventional sprayer. When concentrate sprayers are used, the amount of Mite E.C. per acre should remain the same as when applied in dilute spray.

COMPATIBILITY

Mite E.C. is compatible with most commonly used pear fruit sprays of Acaricides and fungicides. Do not tank mix Mite E.C. with Cyprox, Terbufos, Bifenazoxin or other acaricides.

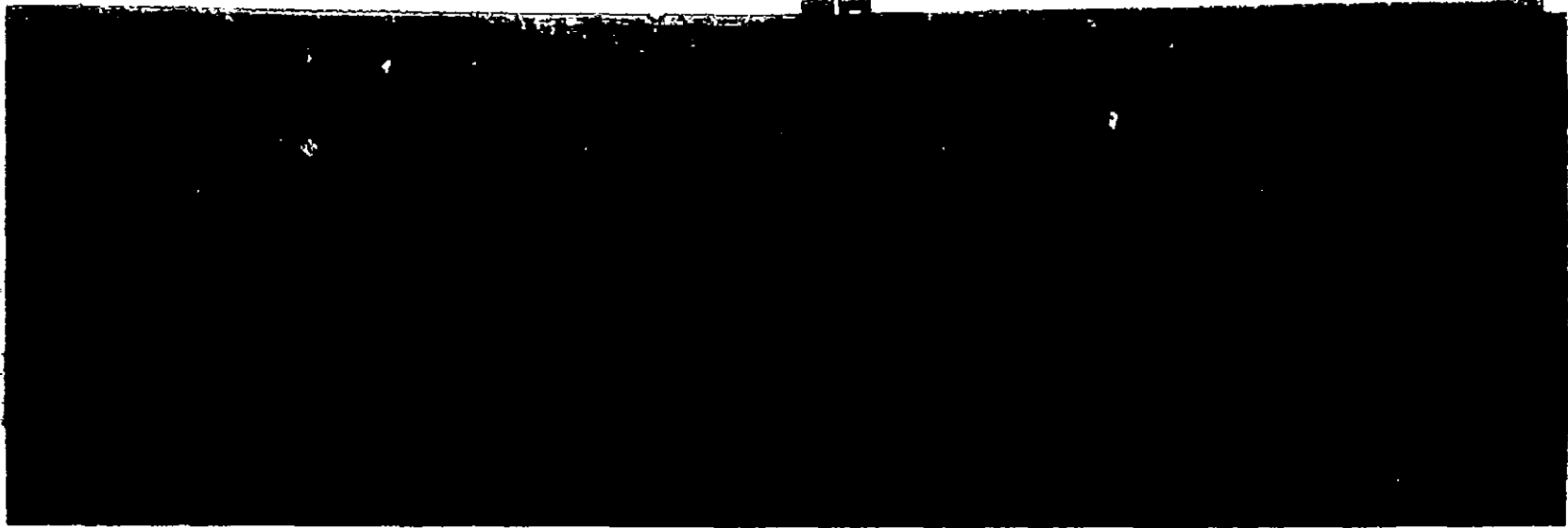
CAUTION:

DO NOT GRASS TREATED AREAS

Do not use on grass. Do not apply Mite E.C. to lawns, pastures, etc. Do not use on lawns, pastures, etc. when grass is growing. Do not use on lawns, pastures, etc. when grass is growing.

Do not use on lawns, pastures, etc. when grass is growing. Do not use on lawns, pastures, etc. when grass is growing.

43142-45



PEAR PSYLLA

Apply 2 to 4 quarts of Mitac E.C. per acre. When full dilute coverage requires less than 400 gallons per acre use 1 to 2 pints per 100 gallons.

Problems of control of overwintering Psylla Adults. Apply Mitac E.C. after eggs have moved into the female psylla oviduct but prior to heavy egg laying.

For dormant or delayed dormant applications, better control is obtained when Mitac E.C. is used in combination with...

For best results, Mitac E.C. should be applied when daily maximum temperatures exceed 50 F.

Consult your local University Extension service for further information concerning optimum timing for control of overwintering adult psylla.

In weathered orchards and low rainfall period spraying before heavy egg laying spray after the majority of the first generation eggs have hatched.

Post-Bloom Control of Psylla

Apply Mitac E.C. as needed. Best control will be obtained when the majority of post-bloom adults in the orchard are nymphs, before they mature.

European Red Mite

Apply 2 to 4 quarts of Mitac E.C. per acre. After full dilute coverage requires less than 400 gallons per acre use 1 to 2 pints per 100 gallons.

Apply Mitac E.C. after the majority of the overwintered mites have hatched.

For post-bloom control apply as needed.

European Red Mite

Apply 2 to 4 quarts of Mitac E.C. per acre. After full dilute coverage requires less than 400 gallons per acre use 1 to 2 pints per 100 gallons.

Apply Mitac E.C. after the majority of the overwintered mites have hatched.

For post-bloom control apply as needed.

STORAGE AND DISPOSAL

Not for storage in or around the home environment.

Do not contaminate water, food, or feed by storage or disposal.

Open dumping is prohibited.

Triple-rinse container and offer for recycling, reconditioning, or disposal in approved landfill, or bury in a safe place.

Pesticide, spray mixture, or rinsate that cannot be used or chemically processed should be disposed of in a landfill approved for pesticides or buried in a safe place away from water supplies.

Consult Federal, state, or local disposal authorities for approved alternative procedures

NONWARRANTY Pests: Hercules Agrochemicals Co. warrants that this product conforms to the chemical description on its label. When used in accordance with all directions under normal conditions, this product is warranted for its intended purpose. Since timing, method of application, weather, type of plant, soil conditions, mixture with other chemicals, and other factors other than those of this product are beyond our control, we do not warrant the use of this product under conditions which are not reasonably foreseeable. The user should make his own use.

BE CAREFUL AND WARN THE USER TO BE CAREFUL

NEVER TO DRUM HANDLERS In case of fire, call fire department. In case of other emergency, call your local P.O. telephone to...

800-4-A-GRUB

43142-45