

PM 23

42768-3

1 of 3

FEB 13 1996

Mr. Ronald B. Child  
California Products Corporation  
169 Waverly Street  
P.O. Box 390569  
Cambridge, MA 02139-0007

Dear Mr. Child:

Subject: California Storm Stain & Wood Preservative  
Semi-Transparent Linseed Oil 515 Weathering Stain  
EPA Registration No. 42768-3  
Your letter of January 26, 1996, Request for  
Stamped Final Printed Labeling.

The label that was stamped March 27, 1992 and enclosed in this Agency's letter of the same date was accepted under the Federal Insecticide, Fungicide and Rodenticide Act, as amended, provided that you revised the label in accordance with the statements in the letter. In your subject letter you enclosed two (2) different labels, one for a semi-transparent product and one for a solid color product, both under the name "California Products Storm Stain ( ), Linseed Oil Stain & Wood Preservative" as indicated in the March 27, 1992 letter mentioned above, only the labeling for the "semi-transparent" product was accepted. A review of the "solid color" product label indicates that it does not conform with the required labeling for this pesticide product.

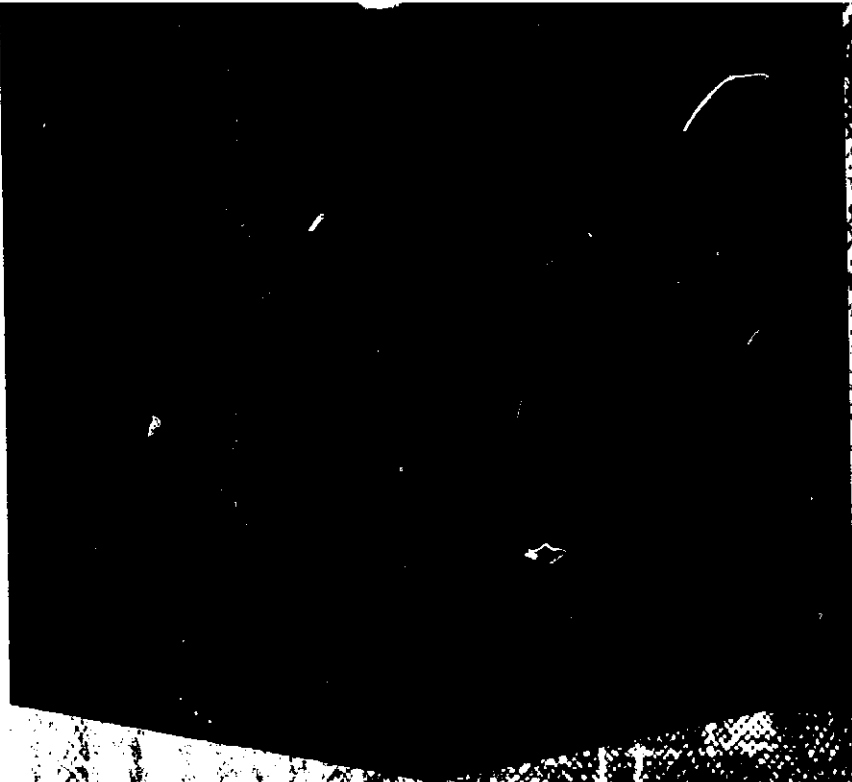
The labeling for the product "California Products Storm Stain Semi-Transparent Linseed Oil Stain & Wood Preservative" was accepted under the Act on March 27, 1992. As requested we are returning to you a copy of that label stamped accepted for your records.

Until the other label is revised and accepted by this Agency it does not represent an EPA registered pesticide product.

Sincerely yours,

Joanne I. Miller  
Product Manager (23)  
Fungicide-Herbicide Branch  
CONCURRENCES:  
Registration Division (7505C)

SYMBOL	Enclosure (1)					
SURNAME	J. Wilson:ABC27:02;09;96					
DATE						



# Linseed Oil Stain & Wood Preservative

Active Ingredients	
• Cobalt (tri-n-butyltin) oxide	0.4%
• Fungicide [N-(Trichloromethylthio)phthalimide]	0.7%
Inert Ingredients	98.9%
	100.00%

Contains petroleum distillates  
EPA REG. NO. 42768-3  
EPA EST. NO. 42768 MA-1

Protects  
mildew

KEEP OUT  
WARN  
COMBUST

BEST AVAILABLE COPY

# STORM STAIN & WOOD PRESERVATIVE

## SEMI-TRANSPARENT-OIL BASE

Shingles - Shakes - Clapboards - Plywood Siding - Trim - Decks

This semi-transparent stain, rich in linseed oil was developed to provide fade resistant exterior protection without detracting from the texture and graining of natural wood. STORM STAIN repels water and protects the wood from the ravages of weather.

Two coats of STORM STAIN WOOD PRESERVATIVE Semi-Transparent Oil Base are recommended for maximum protection of most new or unfinished woods. A single coat is recommended for decks, porches, railings and outdoor furniture. When recoating previously stained surfaces use the same color or a darker color.

Clear stain bases will protect the wood but will not prevent natural color changes that occur when wood is exposed to ultra violet rays from the sun.

### PRECAUTIONARY STATEMENTS

#### HAZARDS TO HUMANS AND DOMESTIC ANIMALS

**WARNING:** Causes substantial but temporary eye injury. May cause an allergic skin reaction. Harmful if swallowed or inhaled. Do not get in eyes, on skin or on clothing. Avoid breathing dust or liquid aerosols. Wear goggles or face shield when handling. Wash thoroughly with soap and water after handling. Remove contaminated clothing and separately launder clothing before reuse.

**FIRST AID PROCEDURE:** Harmful if swallowed or absorbed through skin. Do not get in eyes, on skin or on clothing. Wash thoroughly after handling.

#### STATEMENTS OF PRACTICAL TREATMENT

**IF IN EYES:** Flush with plenty of water. Call a physician. — **IF SWALLOWED:** Promptly drink a large quantity of milk, egg whites, gelatin solution, or, if these are not available, drink large quantities of water. Do not drink alcohol.

**ENVIRONMENTAL HAZARDS:** This product is highly toxic to fish. Treated effluent should not be discharged where it will drain into lakes, streams, ponds or public waters. Do not contaminate water by cleaning of equipment or disposal of wastes. Apply this product only as specified on the label.

**PHYSICAL AND CHEMICAL HAZARDS:** Do not use, pour, spill or store near heat or open flame. Use only with adequate ventilation. Close container after each use.

**DIRECTIONS FOR USE:** It is a violation of Federal law to use this product in a manner inconsistent with its labeling.

Wear goggles or face shield when handling. Remove contaminated clothing and separately launder clothing before reuse. Wash thoroughly with soap and water after handling.

**STORAGE:** Do not store near excessive heat.

**DISPOSAL:** Do not reuse container. Rinse thoroughly before discarding in trash.

**KEEP OUT OF REACH OF CHILDREN.**

**SURFACE PREPARATION:** All surfaces must be clean and thoroughly dry before application of STORM STAIN Semi-Transparent Oil Base Stain. Prior to staining, remove all mildew from affected areas by scrubbing with a solution of 50% household bleach and 50% water. Use rubber gloves and safety goggles for personal protection during this process. Hose down with clean water and allow to dry.

Shingles, shakes, rough sawn siding, plywood and clapboards with the rough side out allow stain to penetrate properly. Smooth planed clapboards or siding should be rough sanded thoroughly to break the smooth "mill glaze" and allow proper penetration of the stain.

**APPLICATION:** Thoroughly stir this material until all ingredients are fully incorporated into the liquid. Additional light stirring during application may be necessary to maintain color uniformity. Intermix contents of cans by pouring back and forth or by pouring into a large container and stirring before doing large areas.

**DO NOT THIN OIL BASE STORM STAIN.**

Oil Base Stains, both Solid and Semi-Transparent, are best applied by natural bristle brushes, but can be rolled or sprayed.

Stain only a few boards or small area at a time. Vertical boards or shingles should be stained continuously from the top, always working to the edge of a board or shingle to avoid overlapping.

Horizontal siding should be started at the top and worked across, always working towards an edge or break such as a door or window. Avoid overlapping.

Stain colors vary with the type of wood so that a small board or an inconspicuous section of the house should be stained first to test the stain on the actual wood.

STORM STAIN is self-priming on wood surfaces. Cedar, Redwood, Cypress and some other woods contain a natural water soluble ingredient, "tannin", that will show as a reddish brown stain when it migrates to the surface of damp wood. Should these stains appear they can be removed by washing with a mild detergent solution and rinsing with clear water. Stains will also disappear naturally if left exposed to the sun for a period of time.

**PRECAUTIONS:** Do NOT use over previously painted or varnished surfaces. Temperatures of both air and surface should be at least 50°F during application and drying time. Do not mix with oil, water, or other types of paint or stain. Clean brushes and equipment with mineral spirits. Do NOT use oil base stains on hardboard or compressed fiber siding.

Pressure treated wood should weather at least six months until "green" tint has oxidized away to avoid discoloration of stain topcoats.

**COVERAGE:** 200-400 sq. ft. - depending on type of wood

**DRYING TIME:** Touch - 4 Hours      Recoat - 24 Hours

Made in U.S.A.

Printed in U.S.A.

California Products Corporation, EST. 1926

169 Waverly Street-Cambridge, MA 02139



**DANGER - RAGS, STEEL WOOL, OR WASTE SOAKED WITH STORM STAIN SEMI-TRANSPARENT OIL STAIN MAY SPONTANEOUSLY CATCH FIRE IF IMPROPERLY DISCARDED. IMMEDIATELY AFTER EACH USE PLACE RAGS, STEEL WOOL, OR WASTE IN A SEALED, WATER-FILLED METAL CONTAINER.**

**BEST AVAILABLE COPY**