

42750-111

3/13/2014

1/22

UNITED STATES ENVIRONMENTAL PROTECTION AGENCY
WASHINGTON, D.C. 20460



OFFICE OF
CHEMICAL SAFETY AND
POLLUTION PREVENTION

Albaugh, Inc.
P.O. Box 2127
Valdosta, GA 31604

Subject: Amended label adding pollinator protection language
Product Name: Imidacloprid 75 WP AG
EPA Reg. No. 42750-111
Submission dated August 19, 2013
Decision #: 482515

MAR 13 2014

Dear Ms. Miter:

The labeling referred to above, submitted in connection with registration under the Federal Insecticide, Fungicide, and Rodenticide Act is acceptable. A stamped copy of your labeling is enclosed for your records. This labeling supersedes all previously accepted labeling. You must submit one (1) copy of the final printed labeling before you release the product for shipment with the new labeling. See 40 CFR 156.10(a)(6).

Under 40 CFR 152.130(d), EPA may establish dates by which all product distributed or sold by the registrant must bear revised labeling. The following paragraphs set forth the schedule for ensuring that that your product bears revised labeling within a reasonable time period.

- Any product released for shipment after 2/28/14 must bear the new label.

If these conditions are not complied with, EPA will take appropriate action against this registration. If you have any questions please contact Dr. Jennifer Urbanski at 703-347-0156 or urbanski.jennifer@epa.gov.

Regards,

A handwritten signature in black ink that reads "Venus Eagle".

Venus Eagle, Product Manager (01)
Insecticide-Rodenticide Branch
Registration Division (7505P)

2/22

EDITOR'S NOTE: 3/12/14 re-submittal of draft label amendment in response to Agency's 8/15/13 Label Call-In for pollinator precautions

Imidacloprid 75 WP AG

Wettable Powder Insecticide in Water Soluble Packets

For control of listed insects infesting various crops

ACTIVE INGREDIENT:

Imidacloprid, 1-[(6-Chloro-3-pyridinyl)methyl]-N-nitro-2-imidazolidinimine 75%

OTHER INGREDIENTS: 25%

TOTAL 100%

STOP - Read the label before use

KEEP OUT OF REACH OF CHILDREN

CAUTION

FIRST AID

ACCEPTED

MAR 13 2014

Under the Federal Insecticide, Fungicide, and Rodenticide Act, as amended, for the pesticide registered under:

EPA. Reg. No: 42750-111

IF SWALLOWED	<ul style="list-style-type: none"> • Call a poison control center or doctor immediately for treatment advice. • Have person sip a glass of water if able to swallow. • Do not induce vomiting unless told to do so by a poison control center or doctor. • Do not give anything by mouth to an unconscious person.
IF IN EYES	<ul style="list-style-type: none"> • Hold eye open and rinse slowly and gently with water for 15 to 20 minutes. Remove contact lenses, if present, after the first 5 minutes, then continue rinsing eye. • Call a poison control center or doctor for treatment advice.
IF ON SKIN OR CLOTHING	<ul style="list-style-type: none"> • Take off contaminated clothing. • Rinse skin immediately with plenty of water for 15 to 20 minutes. • Call a poison control center or doctor for treatment advice.
In case of emergency call CHEMTREC toll free at 1-800-424-9300. Have a product container or label with you when calling a poison control center or doctor, or going for treatment.	
Note To Physician: No specific antidote is available. Treat the patient symptomatically.	

EPA Reg. No. 42750-111

EPA Est. No. xxxxxx-xx-xxx

NET CONTENTS: 8 x 2.1 oz

Manufactured For:
ALBAUGH, INC.
ANKENY, IA 50021

3/22

PRECAUTIONARY STATEMENTS

HAZARDS TO HUMANS AND DOMESTIC ANIMALS

CAUTION

Harmful if swallowed, inhaled, or absorbed through skin. Avoid contact with skin, eyes, or clothing. Applicators and other handlers must wear:

- Long-sleeved shirt and long pants
- Chemical-resistant gloves made of any waterproof material such as, barrier laminate, butyl rubber, nitrile rubber, neoprene rubber, natural rubber, polyethylene, polyvinyl chloride (PVC) or viton.
- Shoes plus socks

Follow manufacturer's instructions for cleaning/ maintaining personal protective equipment, PPE. If no such instructions for washables exist, use detergent and hot water. Keep and wash PPE separately from other laundry.

ENGINEERING CONTROLS STATEMENTS

When handlers use closed systems, enclosed cabs, or aircraft in a manner that meets the requirements listed in the Worker Protection Standard (WPS) for agricultural pesticides [40 CFR 170.240(d)(4-6)], the handler PPE requirements may be reduced or modified as specified in the WPS.

USER SAFETY RECOMMENDATIONS

User should:

- Wash hands before eating, drinking, chewing gum, using tobacco or using the toilet.
- Remove clothing immediately if pesticide gets inside. Then wash thoroughly and put on clean clothing.
- Remove PPE immediately after handling this product. Wash the outside of gloves before removing. As soon as possible, wash thoroughly and change into clean clothing.

ENVIRONMENTAL HAZARDS

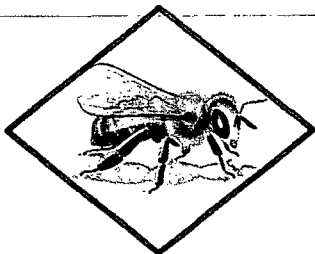
Do not apply directly to water, or to areas where surface water is present or to intertidal areas below the mean high water mark. Do not contaminate water when disposing of equipment washwaters.

This product is highly toxic to bees exposed to direct treatment or residues on blooming crops or weeds. Do not apply this product or allow it to drift to blooming crops or weeds if bees are foraging the treatment area. This product is highly toxic to aquatic invertebrates.

This chemical demonstrates the properties and characteristics associated with chemicals detected in ground water. The use of this chemical in areas where soils are permeable, particularly where the water table is shallow, may result in groundwater contamination.

4/22

PROTECTION OF POLLINATORS



APPLICATION RESTRICTIONS EXIST FOR THIS PRODUCT BECAUSE OF RISK TO BEES AND OTHER INSECT POLLINATORS. FOLLOW APPLICATION RESTRICTIONS FOUND IN THE DIRECTIONS FOR USE TO PROTECT POLLINATORS.



Look for the bee hazard icon in the Directions for Use for each application site for specific use restrictions and instructions to protect bees and other insect pollinators.

This product can kill bees and other insect pollinators.

Bees and other insect pollinators will forage on plants when they flower, shed pollen, or produce nectar.

Bees and other insect pollinators can be exposed to this pesticide from:

- o Direct contact during foliar applications, or contact with residues on plant surfaces after foliar applications
- o Ingestion of residues in nectar and pollen when the pesticide is applied as a seed treatment, soil, tree injection, as well as foliar applications.

When Using This Product Take Steps To:

- o Minimize exposure of this product to bees and other insect pollinators when they are foraging on pollinator attractive plants around the application site.
- o Minimize drift of this product on to beehives or to off-site pollinator attractive habitat. Drift of this product onto beehives or off-site to pollinator attractive habitat can result in bee kills.

Information on protecting bees and other insect pollinators may be found at the Pesticide Environmental Stewardship website at:

<http://pesticidestewardship.org/PollinatorProtection/Pages/default.aspx>.

Pesticide incidents (for example, bee kills) should immediately be reported to the state/tribal lead agency. For contact information for your state, go to: www.aapco.org/officials.html. Pesticide incidents should also be reported to the National Pesticide Information Center at: www.npic.orst.edu or directly to EPA at: beekill@epa.gov

5/22

TAKE THE FOLLOWING PRECAUTIONS WHEN MIXING AND APPLYING IN THE VICINITY OF AQUATIC AREAS SUCH AS LAKES; RESERVOIRS, RIVERS; PERMANENT STREAMS, MARSHES OR NATURAL PONDS; ESTUARIES AND COMMERCIAL FISH FARM PONDS.

SPRAY DRIFT MANAGEMENT

The interaction of many equipment and weather related factors determine the potential for spray drift. The applicator is responsible for considering all of these factors when making application decisions. Avoiding spray drift is the responsibility of the applicator.

Mixing and Loading Requirements

To avoid potential contamination of groundwater, the use of a properly designed and maintained containment pad for mixing and loading of any pesticide into application equipment is recommended. If containment pad is not used, maintain a minimum distance of 25 feet between mixing and loading areas and potential surface to groundwater conduits such as field sumps, uncased well head, sinkholes or field drains

For Aerial Applications:

The spray boom should be mounted on the aircraft so as to minimize drift caused by wing tip vortices. The minimum practical boom length should be used, and must not exceed 75% of the wing span or rotor diameter.

Importance of Droplet Size

An important factor influencing drift is droplet size. Small droplets (<150 - 200 microns) drift to a greater extent than large droplets. Within typical equipment specifications, applications should be made to deliver the largest droplet spectrum that provides sufficient control and coverage. Formation of very small droplets may be minimized by appropriate nozzle selection.

Wind Speed Restrictions

Drift potential increases at wind speeds of less than 3 mph (due to inversion potential) or more than 10 mph. However, many factors, including droplet size, canopy and equipment specifications determine drift potential at any given wind speed. Do not apply when winds are greater than 15 mph and avoid gusty and windless conditions. Risk of exposure to sensitive aquatic areas can be reduced by avoiding applications when wind direction is toward the aquatic area.

Restrictions During Temperature Inversions

Do not make aerial or ground applications during temperature inversions. Drift potential is high during temperature inversions. Temperature inversions restrict vertical air mixing, which causes small suspended droplets to remain close to the ground and move laterally in a concentrated cloud.

Temperature inversions are characterized by increasing temperature with altitude and are common on nights with limited cloud cover and light to no wind. They begin to form as the sun sets and often continue into the morning. Their presence can be indicated by ground fog; however if fog is not present, inversions can also be identified by the movement of smoke from a ground source. Smoke that layers and moves laterally in a concentrated cloud (under low wind conditions) indicates an inversion, while smoke that moves upward and rapidly dissipates indicates good vertical mixing.

Airblast (Air Assist) Specific Recommendations for Tree Crops and Vineyards

Airblast sprayers carry droplets into the canopy of trees/vines via a radially, or laterally directed air stream. The following specific drift management practices should be followed:

- Adjust deflectors and aiming devices so that spray is only directed into the canopy;
- Block off upward pointed nozzles when there is no overhanging canopy;
- Use only enough air volume to penetrate the canopy and provide good coverage;
- Do not allow the spray to go beyond the edge of the cultivated area (i.e., turn off sprayer when turning

at end rows);

- Only spray inward, toward the orchard or vineyard, for applications to the outside rows.

No-Spray Zone Requirements for Foliar Applications

Do not apply by ground within 25 feet, or by air within 150 feet of lakes; reservoirs; rivers; permanent streams, marshes or natural ponds; estuaries and commercial fish farm ponds.

Runoff Management

Do not cultivate within 10 feet of the aquatic areas to allow growth of a vegetative filter strip. When used on erodible soils, best management practices for minimizing runoff should be employed. Consult your local Natural Resources Conservation Service for recommendations in your use area.

Endangered Species Notice

Under the Endangered Species Act, it is a Federal Offense to use any pesticide in a manner that results in the death of a member of an endangered species. Consult your local county bulletin, County Extension Agent, or Pesticide State Lead Agency for information concerning endangered species in your area.

Resistance Management

Some insects may develop resistance to imidacloprid after repeated use. Users should incorporate resistance management practices such as rotating classes of insecticides when possible.

Insect species that have acquired a tolerance to imidacloprid and other neonicotinoid (Group 4A) insecticides may become dominant if Group 4A is used repeatedly. This can eventually result in the loss of this class of insecticides as a viable control.

Do not make over three consecutive applications of IMIDACLOPRID 75 WP AG and/or other Group 4A neonicotinoid class products having a similar mode of action. Following a neonicotinoid series of treatments, Albaugh recommends rotation to application with products that control with a different mode of action before making more applications of neonicotinoid products. Using a rotation of insecticide classes approach, along with other IPM practices, is an effective strategy for minimizing insect pest's resistance to this class of chemistry.

Soil applications of neonicotinoid class insecticides to crops should be factored into the resistance management plans for foliar applications to the crops.

Other Group 4A, neonicotinoid products labeled for foliar treatments include: Actara, Assail, CALYPSO®, Centric, and Intruder. LEVERAGE® and TRIMAX®. Other 4A Group, neonicotinoid products used as soil treatment include: ADMIRE® and Platinum.

Additional information on insect resistance management can be obtained from your local extension specialist, certified crop advisor, product manufacturer or visit the Insecticide Resistance Action Committee (IRAC) on the web at <http://irac-online.org/>.

7/22

DIRECTIONS FOR USE

It is a violation of Federal law to use this product in a manner inconsistent with its labeling.

Do not apply this product in a way that will contact workers or other persons, either directly or through drift. Only protected handlers may be in the area during application. For any requirements specific to your State or Tribe, consult the agency responsible for pesticide regulation.

See individual crops for specific pollinator protection application restrictions. If none exist under the specific crop, for foliar applications, follow these application directions for crops that are contracted to have pollinator services or for food/feed & commercially grown ornamentals that are attractive to pollinators:

1. FOR CROPS UNDER CONTRACTED POLLINATION SERVICES



Do not apply this product while bees are foraging. Do not apply this product until flowering is complete and all petals have fallen unless the following condition has been met:

- If an application must be made when managed bees are at the treatment site, the beekeeper providing the pollination services must be notified no less than 48-hours prior to the time of the planned application so that the bees can be removed, covered or otherwise protected prior to spraying.

2. FOR FOOD CROPS AND COMMERCIALY GROWN ORNAMENTALS NOT UNDER CONTRACT FOR POLLINATION SERVICES BUT ARE ATTRACTIVE TO POLLINATORS



Do not apply this product while bees are foraging. Do not apply this product until flowering is complete and all petals have fallen unless one of the following conditions is met:

- The application is made to the target site after sunset
- The application is made to the target site when temperatures are below 55°F
- The application is made in accordance with a government-initiated public health response
- The application is made in accordance with an active state-administered apiary registry program where beekeepers are notified no less than 48-hours prior to the time of the planned application so that the bees can be removed, covered or otherwise protected prior to spraying
- The application is made due to an imminent threat of significant crop loss, and a documented determination consistent with an IPM plan or predetermined economic threshold is met. Every effort should be made to notify beekeepers no less than
- 48-hours prior to the time of the planned application so that the bees can be removed, covered or otherwise protected prior to spraying.

8/22

AGRICULTURAL USE REQUIREMENTS

Use this product only in accordance with its labeling and with the Worker Protection Standard, 40 CFR part 170. This Standard contains requirements for the protection of agricultural workers on farms, forests, nurseries, and greenhouses, and handlers of agricultural pesticides. It contains requirements for training, decontamination, notification, and emergency assistance. It also contains specific instructions and exceptions pertaining to the statements on this label about personal protective equipment (PPE) and restricted-entry interval. The requirements in this box only apply to uses of this product that are covered by the Worker Protection Standard.

Do not enter or allow worker entry into treated areas during the restricted entry interval (REI) of 12 hours.

Exception: If the product is soil-injected or soil-incorporated, the Worker Protection Standard, under certain circumstances, allows workers to enter the treated area if there will be no contact with anything that has been treated.

PPE required for early entry to treated areas that is permitted under the Worker Protection Standard and that involves contact with anything that has been treated, such as plants, soil, or water, is:

- Coveralls
- Chemical-resistant gloves made of any waterproof material such as, barrier laminate, butyl rubber, nitrile rubber, neoprene rubber, natural rubber, polyethylene, polyvinylchloride (PVC) or viton
- Shoes plus socks

STORAGE AND DISPOSAL

Do not contaminate water, food, or feed by storage or disposal.

PESTICIDE STORAGE: Store in a cool, dry place and in such a manner as to prevent cross contamination with other pesticides, fertilizers, food, and feed. Store in original container and out of the reach of children, preferably in a locked storage area. Handle and open container in a manner as to prevent spillage. If the container is leaking, invert to prevent leakage. If container is leaking or material spilled for any reason or cause, carefully dam up spilled material to prevent runoff. Refer to Precautionary Statements on label for hazards associated with the handling of this material. Do not walk through spilled material. Absorb spilled material with absorbing type compounds and dispose of as directed for pesticides below. In spill or leak incidents, keep unauthorized people away. You may contact the Albaugh's Emergency Response Team for decontamination procedures or any other assistance that may be necessary.

PESTICIDE DISPOSAL: Wastes resulting from the use of this product may be disposed of on site or at an approved waste disposal facility.

CONTAINER DISPOSAL [For product packaged in plastic container]:

Non-refillable container. Do not reuse or refill this container. Offer for recycling, if available. Triple rinse container (or equivalent) promptly after emptying.

Triple rinse as follows: Empty the remaining contents into application equipment or a mix tank and drain for 10 seconds after the flow begins to drip. Fill the container ¼ full with water and recap. Shake for 10 seconds. Pour rinsate into application equipment or a mix tank or store rinsate for later use or disposal. Drain for 10 seconds after the flow begins to drip. Repeat this procedure two more times.

CONTAINER DISPOSAL [For product packaged in water-soluble packaging]:

Completely empty bag into application equipment. Then dispose of in a sanitary landfill or by incineration, or, if allowed by State and local authorities, by burning. If burned, stay out of smoke.

9/22

APPLICATION INSTRUCTIONS

Apply IMIDACLOPRID 75 WP AG as a directed or broadcast foliar spray. Thorough coverage of foliage without runoff is required for maximum insecticidal efficacy. Use of adequate spray volumes and correctly calibrated application equipment is critical. Use of a spray adjuvant may enhance thorough coverage. Lack of adequate coverage and retention of IMIDACLOPRID 75 WP AG on foliage and fruit can delay or lessen insect control. IMIDACLOPRID 75 WP AG may be applied with ground or aerial application equipment that has been properly calibrated.

Minimum spray volumes (unless otherwise specified on crop sections) are:

- 10 gallons/Acre by ground application
- 5 gallons/Acre through aerial equipment.

IMIDACLOPRID 75 WP AG may also be applied by overhead chemigation (see CHEMIGATION DIRECTIONS FOR USE section below) if allowed in crop specific application section.

IMIDACLOPRID 75 WP AG application to crops grown for production of true seed intended for private or commercial planting are not allowed unless permitted under State specific 24 (c) labeling.

Additional information on IMIDACLOPRID 75 WP AG uses for these crops and other questions may be obtained from the Cooperative Extension Service, PCAs, consultants or local Albaugh representatives.

RESTRICTIONS:

- Do not exceed application of more than 0.5 lbs. active ingredient per acre, per year, regardless of formulation or method of application, unless specified within a crop specific applications section for a given crop.

Mixing Instructions

1. Add a 50% of the required amount of water to the spray tank
2. Begin agitation
3. Add labeled rate of IMIDACLOPRID 75WP AG
4. Add balance of water needed.

Maintain sufficient agitation during both mixing and application. IMIDACLOPRID 75 WP AG may be tank mixed with other pesticides and/or fertilizer solutions. Refer to Compatibility Note below. When tank mixing IMIDACLOPRID 75 WP AG with other pesticides, prepare the tank mixture as recommended above and follow suggested Mixing Order below.

Mixing Order for Tank Mixes

1. Wettable powders
2. IMIDACLOPRID 75WP AG, or other flowables second,
3. Emulsifiable concentrates

Maintain good agitation as each pesticide is added. Do not add the next product until the previous is thoroughly mixed. If a fertilizer solution is added, a fertilizer pesticide compatibility agent may be needed. Maintain constant agitation during both mixing and application to ensure uniformity of spray mixture.

Compatibility Note

Unless the applicator has prior knowledge of the compatibility of the intended tank mixture, Albaugh recommends a small scale test by adding proportionate amounts of each ingredient in the appropriate order, to a clear pint or quart sized jar. Cap and shake for 5 minutes, then let set for 5 minutes. Any visual indication of poor mixing or formation of precipitates that cannot be easily re-dispersed indicates

10/22

incompatibility and the mixture that should not be used.

CHEMIGATION DIRECTIONS FOR USE

Refer to DIRECTIONS FOR USE section before proceeding with chemigation application.

Types of Irrigation Systems

Chemigation applications of IMIDACLOPRID 75 WP AG may be made to crops through overhead sprinkler chemigation systems if specified in crop-specific recommendations sections. Do not apply IMIDACLOPRID 75 WP AG through any other type of irrigation system.

Water Volume

IMIDACLOPRID 75 WP AG chemigation applications should be made as concentrated as possible. Retention of IMIDACLOPRID 75 WP AG on target site of insect infestation is necessary for optimum activity. Chemigation of IMIDACLOPRID 75 WP AG in water volumes exceeding 0.10 inches/Acre are not recommended.

Uniform Water Distribution and System Calibration

The irrigation system must provide uniform distribution of treated water. Crop injury, lack of effectiveness or illegal pesticide residues in the crop can result from non-uniform distribution of treated water. The system must be calibrated to uniformly apply the rates specified. If you have questions about calibration, you should contact State Extension Service specialists, equipment manufacturers or other experts.

Chemigation Monitoring

A person knowledgeable of the chemigation system and responsible for its operation, or under the supervision of the responsible person, shall shut the system down and make necessary adjustments should the need arise.

Drift

Do not apply when the wind speed favors drift beyond the area intended for treatment.

Required System Safety Devices

The system must contain a functional check valve, vacuum relief valve, and low-pressure drain appropriately located on the irrigation pipeline to prevent water source contamination from backflow. The pesticide injection pipeline must contain a functional automatic, quick-closing check valve to prevent the flow of fluid back toward the injection pump. The pesticide injection pipeline must also contain a functional, normally closed, solenoid-operated valve located on the intake side of the injection pump and connected to the system interlock to prevent fluid from being withdrawn from the supply tank when the irrigation system is either automatically or normally shut down. The system must contain functional interlocking controls to automatically shut off the pesticide injection pump when the water pump motor stops. The irrigation line or water pump must include a functional pressure switch which will stop the water pump motor when the water pressure decreases to the point where pesticide distribution is adversely affected. Systems must use a metering pump, such as a positive displacement injection pump (e.g., diaphragm pump) effectively designed and constructed of materials that are compatible with pesticides and capable of being fitted with a system interlock.

11/22

Using Water from Public Water Systems

DO NOT APPLY IMIDACLOPRID 75 WP AG THROUGH ANY IRRIGATION SYSTEM PHYSICALLY CONNECTED TO A PUBLIC WATER SYSTEM. Public water system means a system for the provision to the public of piped water for human consumption if such system has at least 15 service connections or regularly serves an average of at least 25 Individuals daily at least 60 days out of the year. IMIDACLOPRID 75 WP AG may be applied through irrigation systems that may be supplied by a public water system only if the water from the public water system is discharged into a reservoir tank prior to pesticide introduction. There shall be a complete physical break (air gap) between the outlet end of the fill pipe and to top or overflow rim of the reservoir tank of at least twice the inside diameter of the fill pipe. Before beginning chemigation, always make sure that the air gap exists and that there is no blockage of the overflow of the reservoir tank.

An irrigation system using water supplied from a public water system must also meet the following requirements. The pesticide injection pipeline must contain a functional automatic quick-closing check valve to prevent the flow of fluid toward the injection pump.

ROTATIONAL CROPS*

Treated areas may be replanted with any crop specified on an imidacloprid label, or any crop for which a tolerance exists for the active ingredient, as soon as practical following the last application. For crops not listed on an imidacloprid label, or for crops for which no tolerances for the active ingredient have been established, a 12-month plant-back interval must be observed.

PLANTBACK INTERVAL	COMMENT
Immediate Plant-back:	Any crop listed on this label plus the following crops not on this label: barley, canola, cardoon, Chinese celery, corn (field, sweet and pop), Celtuce, cranberry*, cucurbits, Florence fennel, leafy petioles*, mustard seed*, rapeseed, rhubarb, sorghum, sugar beet, Swiss chard and wheat.
30-Day Plant-back:	Cereals (including buckwheat, millet, oats, rice, rye and triticales), soybeans, safflower
12-Month Plant-back:	All other crops

*Cover crops for soil building or erosion control may be planted any time, but do not graze or harvest for food or feed.

FIELD CROPS

Apply only as foliar spray at specified rate per acre when insect pressure reaches economic threshold. Uniform coverage is required to achieve best control and a spray adjuvant may help improve coverage. Two applications may be required to achieve control when initial insect populations are high. Retreatment should be based on field scout reports. IMIDACLOPRID 75 WP AG may be tank mixed with other labeled insecticides to increase control or control pests not controlled by imidacloprid. Apply only through properly calibrated ground, aerial or chemigation application equipment insuring thorough coverage.

COTTON

For control of Aphids, Flea hoppers, Plant bugs (east of Rocky Mountains) and suppression of Lygus bug (west of Rocky Mountains) and Whiteflies apply 1.0 ounces per acre as a broadcast or directed spray to infested area. Apply only through properly calibrated ground, aerial or chemigation application equipment insuring thorough coverage.

12/22

Restrictions for Cotton:

- Pre-Harvest Interval (PHI): 14 days
- Minimum interval between applications : 7 days
- Maximum IMIDACLOPRID 75 WP AG allowed per year: 6.0 ounces/Acre (0.28 lb. AI/A)
- Do not graze treated fields after any application of IMIDACLOPRID 75WP AG.
- Regardless of mixture or method of application, apply no more that 0.5 lbs active/acre per year, including seed treaters, soil and foliar uses.

POTATO

For control of Aphids, Colorado potato beetle, Flea beetles, Leafhoppers, Psyllids apply 1.0 ounce per acre as a broadcast or directed spray to infested area. Apply only through properly calibrated ground, aerial or chemigation application equipment insuring thorough coverage.

Restrictions for Potatoes:

- Pre-Harvest Interval (PHI): 7 days
- Minimum Interval between applications: 7 days
- Maximum IMIDACLOPRID 75 WP AG allowed per year: 4.0 ounces/Acre (0.19 lb. a.i./A)

TOBACCO

For control of Aphids apply 0.5 to 1.1 ounces per acre as a broadcast or directed spray to infested area. Use higher rate when insect pressure is heavy.

For control of Flea beetles and Japanese beetle apply 1.1 ounces per acre as a broadcast or directed spray to infested area.

Restrictions for Tobacco:

- Pre-Harvest Interval (PHI): 14 days
- Minimum interval between applications : 7 days
- Maximum number of IMIDACLOPRID 75 WP AG allowed per year: 6.0 ounces/A (0.28 lb. a.i./A)

Apply only through properly calibrated ground, aerial or chemigation application equipment insuring thorough coverage.

VEGETABLE and SMALL FRUIT CROPS

Apply as foliar spray at specified rate per acre when insect pressure reaches economic threshold. Uniform coverage is required to achieve best control and a spray adjuvant may help improve coverage. Two applications may be required to achieve control when initial insect populations are high. Retreatment should be based on field scout reports. IMIDACLOPRID 75 WP AG may be tank mixed with other labeled insecticides to increase control or control pests not controlled by imidacloprid.

Apply only through properly calibrated ground, aerial or chemigation application equipment insuring thorough coverage.

FRUITING VEGETABLES

(Not for use on crops grown for seed unless allowed by state specific 24 (c) labeling)

Eggplant, Ground cherry, Okra, Pepper (including bell, chili, cooking, pimento and sweet), Tomato, Pepinos, Tomatillo

For control of Aphids, Colorado potato beetle, Leafhoppers, Whiteflies apply 1.0 ounce per acre.

For control of Pepper weevil (Pepper only) apply 1.6 ounces per acre. Make applications prior to a damaging population becoming established.

Restriction for Fruiting Vegetables:

- Pre-Harvest Interval (PHI): 0 days
- Minimum interval between applications: 5 days
- Maximum IMIDACLOPRID 75 WP AG allowed per crop season: 5.0 ounces/A (0.23 lb. a.i./A)
- Not for crops grown for seed unless allowed by state specific 24 (c) labels.

Applications of IMIDACLOPRID 75 WP AG must be part of a full-season resistance management program that uses alternate applications products from multiple classes of chemistry and different modes of action.

GLOBE ARTICHOKE

For control of Aphids and Leafhoppers apply 1.1 to 2.7 ounces per acre. Use the higher specified rate when pest pressure is more severe.

Restrictions for Global Artichoke:

- Pre-Harvest Interval (PHI): 7 days
- Minimum interval between applications: 14 days
- Maximum IMIDACLOPRID 75 WP AG allowed per year: 10.7 ounces/A (0.50 lb. a.i./A)

HEAD and STEM BRASSICA VEGETABLES²

Broccoli, Broccoli raab (rapini), Brussels sprouts, Cabbage, Cauliflower, Cavalo broccoli, Chinese (gai Lon) broccoli, Chines (bok choy) cabbage, Chinese (napa) cabbage, Chinese mustard (gai choy) cabbage, Collards, Kale, Kohlrabi, Mizuna, Mustard greens, Mustard spinach, Rape greens, Turnip (tops or leaves)

LEAFY GREENS VEGETABLES²

Amaranth (leafy amaranth, Chinese spinach, tampala), Arugula (roquette), Chervil, Chrysanthemum (edible leaved and garland), Cilantro, Corn salad, Cress (garden). Cress (upland, yellow rocket, winter cress), Dandelion, Dock (sorrel), Endive (escarole), Lettuce (head and leaf), Orach, Parsley, Purslane (garden and winter). Raddicchio (red chicory). Spinach (Including New Zealand and vine (Malabar spinach, Indian spinach)), Watercress (commercial production only. Applications must not be made to native cress growing in streams or other bodies of water), Watercress (upland)¹

For control of Aphids, Flea beetles, Whiteflies apply 1.0 ounce per acre.

Restrictions for Head and Stem Brassica Vegetables and Leafy Greens Vegetables:

- Pre-Harvest Interval (PHI): 7 days

14/22

- Minimum interval between applications: 5 days
- Maximum IMIDACLOPRID 75 WP AG allowed per crop season: 5.0 ounces/A (0.23 lb. a.i./A)

¹Use not permitted in California unless otherwise directed by 24 (c) labeling.

²Not for use on crops grown for seed unless allowed by state specific 24 (c) labeling.

LEGUMES VEGETABLES¹ except soybean, dry

Edible Podded and Succulent Shelled Pea¹ and Bean and Dried Shelled Pea and Bean
 Bean (Lupinus spp., includes grain lupin, sweet lupin, white lupin, and white sweet lupin)
 Bean (Phaseolus spp., includes field bean, kidney bean, lima bean, navy bean, pinto bean, runner bean, snap bean, tepary bean, wax bean)
 Bean (vigna spp., includes adzuki bean, asparagus bean, blackeyed pea, catjang, Chinese longbean, cowpea, Crowder pea, moth bean, mung bean, rice bean. Southern pea, urd bean, yardlong bean)
 Pea (Pisum spp. Includes dwarf pea, edible pea, edible-pod pea, English pea, field pea, garden pea, green pea, snow pea, sugar snappea)
 Other Beans and Peas (Broad bean (fava), chickpea (garbanzo bean), Guar, Jackbean, Lablab bean (hyacinth bean, lentil. Pigeon pea, soybean (immature seed), Sword bean)

For control of Aphids, Leafhoppers, Whiteflies apply 0.9 ounces per acre.

Restrictions for Legume Vegetables except soybean, dry:

- Pre-Harvest Interval (PHI): 7 days
- Minimum interval between applications: 7 days
- Maximum IMIDACLOPRID 75 WP AG allowed per crop season: 2.8 ounces/Acre (0.13 lb. a.i./A)

¹Not for use on crops grown for seed unless allowed by state specific 24 (c) labeling.

ROOT, TUBEROUS and CORM VEGETABLES¹

Arracacha, Arrowroot, Artichoke (Chinese and Jerusalem), Beet (garden)² Burdock (edible)², Canna (edible, Queensland arrowroot), carrot², Cassava (bitter & sweet)², Celeriac², Chayote (root), Chervil (turnip-rooted)³, Chickor/, Chufa, Dasheen (taro), Ginger, Ginseng, Horseradish, Leren, Parsley (turnip-rooted), Parsnip²⁷, Radish³, Oriental radish (diakon)², Rutabaga³, Salsify (black), Salsify (oyster plant), Salsify (Spanish), Skirret, Sweetpotato, Tanier (cocoyam), Tumeric, Turnip², Yam bean (jicama, manioc pea), Yam (true)²

For applications on potato see Field Crops section

For control of Aphids, Flea beetles, Leafhoppers, Whiteflies apply 0.9 ounces per acre.

Restrictions for Root Tuberos and Corm Vegetables:

- Pre-Harvest Interval (PHI): 7 days
- Minimum interval between applications: 5 days
- Maximum IMIDACLOPRID 75 WP AG allowed per crop season: 0.9 ounces/A (0.044 lb a.i./A) on radish; 2.8 ounces/A (0.13 lb. a.i./A) on other crops.
- Maximum IMIDACLOPRID 75 WP AG applications per crop season: 1 on radish; 3 on other crops

¹Not for use on crops grown for seed unless allowed by state-specific 24 (c) labeling.

²Tops or greens from these crops may be utilized for food or feed.

15/22



STRAWBERRY

For control of Aphids, Spittlebugs, Whiteflies apply 1.0 ounce per acre.

Restrictions for Strawberries:

- Pre-Harvest Interval (PHI): 7 days
- Minimum interval between applications: 5 days
- Maximum IMIDACLOPRID 75 WP AG allowed per crop season: 3.0 ounces/A (0.14 lb. a.i./A)
- Do not apply during bloom or within 10 days prior to bloom or when bees are foraging.

TREE, BUSH and VINE CROPS

Apply as foliar spray at specified rate per acre when insect pressure reaches economic threshold.

Uniform coverage is required to achieve best control and a spray adjuvant may help improve coverage. Two applications may be required to achieve control when initial insect populations are high. Retreatment should be based on field scout reports. IMIDACLOPRID 75 WP AG may be tank mixed with other labeled insecticides to increase control or control pests not controlled by imidacloprid.



BUSHBERRY

Blueberry, Currant, Elderberry, Gooseberry, Huckleberry, Juneberry, Lingonberry, Salal

For control of Aphids and Leafhoppers/Sharpshooters apply 0.8 to 1.1 ounces per acre. Use higher rates within rate range when pest pressure more severe.

For control of Japanese beetles (adults) and Thrips apply 1.6 to 2.1 ounces per acre. Use higher rates within rate range when pest pressure more severe.

For control of Blueberry maggot apply 2.1 ounces per acre.

Restrictions for Bushberries:

- Pre-Harvest Interval (PHI): 3 days
- Minimum interval between applications : 7 days
- Maximum IMIDACLOPRID 75 WP AG allowed per year: 10.7 ounces/A (0.5 lb. a.i./A)
- Maximum number of IMIDACLOPRID 75 WP AG applications per year: 5
- Maximum application volume (water): 20.0 GPA - ground; 5.0 GPA - aerial.
- Do not apply pre-bloom or during bloom or when bees are foraging.



CITRUS

Calamondin, Citrus citron, Citrus hybrids (includes chironja, tangelo and tangor), Grapefruit, Kumquat, Lemon, Lime, Mandarin (tangerine), Pummelo, Orange (sweet and sour), Tangelo, Satsuma mandarin, and other cultivars and/or hybrids of these

Pests Controlled	Rate fluid ounces/100 gallons	Rate fluid ounces/Acre
Aphids Black fly Leafhoppers/Sharpshooters Leafminers Mealy bugs Scales Whiteflies	0.9 to 1.3 (for dilute applications)	2.7 to 5.3 (depending on tree size, target pest and infestation pressure)
Thrips (suppression only)	0.9 to 1.3	2.7 to 5.3

Scales - time applications to the crawler stage. Treat each generation. Where concentrated applications are appropriate, increase the spray solution concentration to apply an equivalent rate per acre to than applied in the diluted application. The 5.3 ounce/Acre rate is based on full sized trees. This rate may be reduced proportionally for smaller trees.

Restrictions for Citrus

- Pre-Harvest Interval (PHI): 0 days
- Minimum interval between applications: 10 days
- Maximum IMIDACLOPRID 75 WP AG allowed per year: 10.7 ounces/A (0.5 lb. a.i./A)
- Do not apply during bloom or within 10 days prior to bloom or when bees are foraging.

NOTE: Aerial application of IMIDACLOPRID 75 WP AG may result in slower activity and reduced control to results from ground application.

GRAPE

American bunch grape, Muscadine grape and Viniferous grape

For control of Leafhoppers/Sharpshooters and Mealybugs apply 0.8 to 1.0 ounces per acre. Use higher rates when pest pressure more severe.

For control of Grapeleaf skeletonizer apply 1.0 ounce per acre. Control can usually be achieved with ground applications that provide more thorough coverage of foliage. Aerial applications may only provide suppression due to lack of thorough coverage.

Restrictions for Grapes:

- Pre-Harvest Interval (PHI): 0 days
- Minimum interval between applications: 14 days
- Maximum IMIDACLOPRID 75 WP AG allowed per year: 2.0 ounces/A (0.1 lb. a.i./A)

17/22

HOP

For control of Aphids apply 2.1 ounces per acre.

Restrictions for Hops:

- Pre-Harvest Interval (PHI): 28 days
- Minimum interval between applications: 21 days
- Maximum IMIDACLOPRID 75 WP AG allowed per year: 6.4 ounces/A (0.30 lb. a.i./A)

PECAN (Use not permitted in California unless otherwise directed by state specific 24 (c) labeling)

For control of Aphids (use the higher rate within the rate range for Black pecan aphid), Phylloxera and Spittlebugs apply 0.9 to 1.9 ounces per acre. Use higher specified rate within the rate range when pest pressure more severe.

Restrictions for Pecans:

- Do not apply after shuck split.
- Pre-Harvest Interval (PHI): 7 days
- Minimum interval between applications: 10 days
- Maximum IMIDACLOPRID 75 WP AG allowed per year: 7.5 ounces/A (0.35 lb. a.i./A)



POME FRUIT

Apple, Crabapple, Loquat, Mayhaw, Pear (including Oriental pear), Quince

Pests Controlled	Rate ounces/100 gallons	Rate ounces/Acre ¹
Leafhoppers	0.3 to 0.5	1.2 to 2.0
Aphids (except woolly apple aphid)	0.5	2.0
Leafminers San Jose scale		
FOR PEAR, ONLY	1.3	5.3
Mealybugs Pear psylla		

Leafhoppers - apply low rate for low to moderate populations of white apple leafhoppers and high rate for high populations or for other leafhopper species. Apply IMIDACLOPRID 75 WP AG while most leafhoppers are in the nymphal stage.

Leafminer - for first generation leafminer control, make application after pollination is complete and bees are no longer present in the orchard. Greatest leafminer control will result from the earliest possible application. For second and succeeding generations of leafminer, better control will be obtained from applications made early in the adult flight against egg and early instar larvae. A second application may be required 10 days later if severe pressure continues or if generations are overlapping. A single application may result in suppression only. IMIDACLOPRID 75 WP AG will not control late instar larvae.

Mealybugs - apply maximum gallonage for tree with ground equipment. Ensure good spray coverage of the trunk and scaffolding limbs or other resting sites of mealybugs.

10/22

Rosy apple aphid - apply prior to leafrolling caused by rosy apple aphid.

San Jose scale - time applications to the crawler stage. Treat each generation.

¹The amount of IMIDACLOPRID 75 WP AG required per acre will depend on tree size and volume of foliage present. The rate per acre is based on a standard of 400 gallons of dilute spray solution per acre for large trees. To calculate the rate needed on smaller trees, multiply the pest specific rate (e.g., for aphid control, 2 ounces/100 gallons) times the number of 100 gallons of spray solution required to thoroughly wet foliage just prior to the point of runoff, on one acre of the trees being treated. For concentrate sprays, apply the same amount of IMIDACLOPRID 75 WP AG per acre as would be applied in a dilute spray based on tree size and foliage volume.

Restrictions for Pome Fruits:

- Pre-Harvest Interval (PHI): 7 days
- Minimum interval between applications: 10 days
- Maximum IMIDACLOPRID 75 WP AG allowed per year: 10.7 ounces/A (0.5 lb. a.i./A)
- Do not apply pre-bloom or during bloom or when bees are foraging.

Aerial application of IMIDACLOPRID 75 WP AG may result in slower activity and reduced control compared to ground application due to less thorough coverage.



STONE FRUIT

Apricot, Cherry (including sweet and tart), nectarine, Peach, Plum (including Chickasaw, Damson and Japanese), Plumcot, Prune

Pests Controlled	Rate ounces/100 gallons	Rate ounces/Acre
Aphids Green June beetle Japanese beetle Leafhoppers /Sharpshooters Plant bugs Rose chafer San Jose scale	0.5	1.1 to 2.1
Cherry fruit fly (maggot of Eastern and Western)	0.5	2.1
Pest suppressed		
Plum curculio Stink bugs	0.5	2.1
NOTE: Aerial application of IMIDACLOPRID 75 WP AG may result in slower activity and reduced control relative to results from ground application		

Restrictions for Apricot, Nectarine, Peach:

- Pre-Harvest Interval (PHI): 0 day
- Minimum interval between applications: 7 days
- Maximum IMIDACLOPRID 75 WP AG allowed per year: 6.4 ounces/A (0.30 lbs. a.i./A)
- Minimum application volume (water): 50 GPA -ground application; 25 GPA - aerial application
- Do not apply pre-bloom or during bloom or when bees are foraging.

19/22

Restrictions for Cherries, Plums, Plumcot, Prune:

- Pre-Harvest Interval (PHI): 7 day
- Minimum interval between applications: 10 days
- Maximum IMIDACLOPRID 75 WP AG allowed per year: 10.7 ounces/A (0.50 lbs. A.i./A)
- Minimum application volume (water): 50 GPA -ground application; 25 GPA - aerial application
- Do not apply pre-bloom or during bloom or when bees are foraging.



TROPICAL FRUIT

Acerola, Avocado, Black sapote, Canistel, Feijoa, Jaboticaba, Guava, Longan, Lychee, Mamey sapote, Mango, Papaya, Passionfruit, Pulasan, Rambutan, Sapodilla, Spanish lime, Star apple, Starfruit, Wax jambu

For control of Aphids, Leafhoppers /Sharpshooters, Thrips, and Whiteflies apply 2.1 ounces per acre.

For suppression of Scales apply 2.1 ounces per acre.

Restrictions for Tropical Fruit

- Pre-Harvest Interval (PHI): 7 days
- Minimum interval between applications: 10 days
- Maximum IMIDACLOPRID 75 WP AG allowed per year: 10.7 ounces/A (0.50 lb, a.i./A)
- Maximum number IMIDACLOPRID 75 WP AG applications per year: 5
- Do not apply pre-bloom or during bloom or when bees are foraging.

NOTE: Aerial application of IMIDACLOPRID 75 WP AG may result in slower activity and reduced control compared to ground application due to less thorough coverage.

OTHER CROPS

Apply as foliar spray at specified rate per acre when insect pressure reaches economic threshold.

Uniform coverage is required to achieve best control and a spray adjuvant may help improve coverage.

Two applications may be required to achieve control when initial insect populations are high. Retreatment should be based on field scout reports. IMIDACLOPRID 75 WP AG may be tank mixed with other labeled insecticides to increase control or control pests not controlled by imidacloprid.



POPLAR/COTTONWOOD (includes members of the genus Populus grown for pulp or timber)

(Use not permitted in California unless otherwise directed by state specific 24 (c) labeling)

20/22

For control of Aphids and Leaf beetles apply 1.1 to 2.1 ounces per acre. Use higher specified rate when pest pressure more severe.

Restrictions for Poplar/Cottonwood:

- Minimum interval between applications: 10 days
- Maximum IMIDACLOPRID 75 WP AG allowed per year: 10.7 ounces/A (0.50 lb. a.i./A)
- Do not apply pre-bloom or during bloom or when bees are foraging.

NOTE: Aerial application of IMIDACLOPRID 75 WP AG may result in slower activity and reduced control compared to ground application due to less thorough coverage.

CHRISTMAS TREE

For control of Aphids, Adelgids and Sawflies apply 1.1 to 2.1 ounces per acre. Use the higher specified rate when pest pressure more severe.

Gall-forming adelgids - time applications to coincide with full bud-swell or first bud-break of earliest bud-breaking trees. After galls form, spraying will no longer be ineffective.

Restrictions for Christmas Trees:

- Minimum interval between applications: 7 days
- Maximum IMIDACLOPRID 75 WP AG allowed per year: 10.7 ounces/A (0.50 lb. a.i./A)

NOTE: Aerial application of IMIDACLOPRID 75 WP AG may result in slower activity and reduced control compared to ground application due to less thorough coverage.

POULTRY FACILITIES FOR DARKLING BEETLE AND HIDE BEETLE CONTROL

APPLICATION INSTRUCTIONS

Use IMIDACLOPRID 75 WP as a surface, spot, or crack and crevice treatment to floors, walls and support beams of poultry facilities. Use inside or within 25 feet of the perimeter of poultry structure to control Darkling Beetles or Hide Beetles.

Restrictions for Poultry Facilities:

- Do not apply when birds are present.
- Cover or remove exposed feed and water from the area to be treated.
- Allow treated surfaces to dry before restocking/reintroducing birds into the facility.
- When spraying the perimeter, do not allow this product to contact plants in bloom if bees are foraging the treatment area.

MIXING AND APPLICATION RATES

Determine the area (number of square feet) to be treated. Refer to Mixing Table below for amount of IMIDACLOPRID 75 WP AG to be used. Mix the required amount of IMIDACLOPRID 75 WP AG with the specified amount of water and apply as a spray. Fill the sprayer tank with $\frac{1}{2}$ of the water desired for the treatment. Begin agitating the water and add the required amount of product to the tank. Continue mixing and add the remaining water. Maintain sufficient agitation during product application to ensure a uniform spray. Prepare a fresh spray mixture before each treatment.

2/22

MIXING TABLE FOR IMIDACLOPRID 75 WP AG

Pests to Control	IMIDACLOPRID 75 WP AG Per 1,000 ft ²	Gallons of Water Per 1,000 ft ²
Darkling Beetles Hide Beetles	2.1 fl. oz.* (one water soluble packet)	½ - 2 gallons

* Equivalent to 0.1 lb (45.4 grams) of imidacloprid a.i./1,000 ft²

WHEN AND HOW TO APPLY

Band Application:

When darkling beetles are concentrated in certain areas, such as under feed or water lines, or along the perimeter walls, it may not be necessary to treat the entire poultry house. In these situations, certain portions of the house, or "bands", may be treated. Apply between flocks following de-caking/sanitation procedures.

For example, apply IMIDACLOPRID 75 WP AG to: a 3-foot wide band of litter under all of the feed and/or water lines in the house; a 3-foot wide band of litter adjacent to the side and end walls; and the lower section of the walls, including 1 foot up onto wood surfaces above the concrete foundation. Measure the actual area to be treated in order to determine the amount of IMIDACLOPRID 75 WP needed for the application.

Whole House Application:

When darkling beetle infestation is severe, the entire house may need to be treated. Apply diluted IMIDACLOPRID 75 WP AG as a broadcast spray to the litter covering the entire floor area, especially to litter under feed and water lines, as well as to the lower sections of walls, including 1 foot up onto wood surfaces above the concrete foundation.

In houses with support beams, treat the litter surface around each support post, and 1 foot up each post. Also apply diluted spray to cracks and crevices around wall insulation, where beetles have been seen or can find harborage.

RESISTANCE MANAGEMENT

Darkling beetles, like all insects, have the ability to develop resistance to insecticides. When a single chemical class is used continuously, this increases the likelihood that resistance to that chemical class will develop. IMIDACLOPRID 75 WP AG contains imidacloprid, which belongs to the class of chloronicotinyl insecticides.

Use IMIDACLOPRID 75 WP AG in a insecticide rotation program with other classes of insecticides including, but not limited to pyrethroids, organophosphates, and spinosyns, to prevent resistance and preserve the product's effectiveness for darkling beetle control.

- Read and follow ALL label directions when using IMIDACLOPRID 75 WP AG or any other insecticide.
- Do not use IMIDACLOPRID 75 WP AG or any other insecticide at less than the specified label rate. This exposes the insects to a sub-lethal dose and increases the development of resistance.
- Use Integrated Pest Management (IPM) strategies in addition to insecticide treatments to manage darkling beetle populations.

Contact your local Albaugh, Inc. representative or your local Cooperative Extension Service for advice concerning the use of IMIDACLOPRID 75 WP AG and appropriate resistance management strategies.

22/22

NOTE: When pest exclusion at possible entry points is desired, supplement IMIDACLOPRID 75 WP AG insecticide treatments with targeted applications of a pyrethroid insecticides to the building perimeter, foundation, doors and windows, utility entry points, and other places where pests may enter the structure.

IMPORTANT: READ BEFORE USE

Read the entire Directions for Use, Conditions, Disclaimer of Warranties and Limitations of Liability before using this product. If terms are not acceptable, return the unopened product container at once.

By using this product, user or buyer accepts the following Conditions, Disclaimer of Warranties and Limitations of Liability.

CONDITIONS: The directions for use of this product are believed to be adequate and must be followed carefully. However, it is impossible to eliminate all risks associated with the use of this product. Crop injury, ineffectiveness or other unintended consequences may result because of such factors as weather conditions, presence of other materials, or the manner of use or application, all of which are beyond the control of ALBAUGH, INC. All such risks shall be assumed by the user or buyer.

DISCLAIMER OF WARRANTIES: TO THE EXTENT CONSISTENT WITH APPLICABLE LAW, ALBAUGH, INC. MAKES NO OTHER WARRANTIES, EXPRESS OR IMPLIED, OF MERCHANTABILITY OR OF FITNESS FOR A PARTICULAR PURPOSE OR OTHERWISE, THAT EXTEND BEYOND THE STATEMENTS MADE ON THIS LABEL. No agent of ALBAUGH, INC. is authorized to make any warranties beyond those contained herein or to modify the warranties contained herein. ALBAUGH, INC. DISCLAIMS ANY LIABILITY WHATSOEVER FOR SPECIAL, INCIDENTAL OR CONSEQUENTIAL DAMAGES RESULTING FROM THE USE OR HANDLING OF THIS PRODUCT.

LIMITATIONS OF LIABILITY: TO THE EXTENT CONSISTENT WITH APPLICABLE LAW, THE EXCLUSIVE REMEDY OF THE USER OR BUYER FOR ANY AND ALL LOSSES, INJURIES OR DAMAGES RESULTING FROM THE USE OR HANDLING OF THIS PRODUCT, WHETHER IN CONTRACT, WARRANTY, TORT, NEGLIGENCE, STRICT LIABILITY OR OTHERWISE, SHALL NOT EXCEED THE PURCHASE PRICE PAID, OR AT ALBAUGH, INC.'S ELECTION, THE REPLACEMENT OF PRODUCT.