

ACCEPTED
SEP 30 1982
Under the Federal Insecticide, Fungicide, and Rodenticide Act, as amended, for the pesticide registered under EPA Reg. No. 42519-1

PANOL
TARGET MSMA 6.6
MSMA LIQUID

For Selective Post-Emergent Weed Control

ACTIVE INGREDIENT:
Monosodium Acid Methanearsonate* 51.0%
INERT INGREDIENTS: 49.0%
Total Arsenic (as elemental) all in
water soluble form 12.61%

*Product Contains 6.6 lbs. MSMA per gallon.

Keep Out Of Reach Of Children
CAUTION

STATEMENT OF PRACTICAL TREATMENT
IF SWALLOWED: Call a physician or Poison Control Center. Drink 1 or 2 glasses of water and induce vomiting by touching back of throat with finger. Do not induce vomiting or give anything by mouth to an unconscious person.
IF SPLASHED IN EYES: Immediately flush eyes with plenty of water and get medical attention if irritation develops.
IF SPILLED ON SKIN: Immediately remove contaminated clothing, INCLUDING SHOES, and wash skin with soap and plenty of water. If irritation develops, send for a physician.

See Back Panel For Additional Precautionary Statements.

EPA Reg. #42519-
EPA Est. #42519-1S-1

Net Contents:

Manufactured by
Panol Ltd.
P.O. Box 13
Tel Aviva
Israel

42519-1

BEST DOCUMENT AVAILABLE

4-514-

PRECAUTIONARY STATEMENTS

Hazards to humans and domestic animals.

CAUTION: Harmful if swallowed, avoid breathing spray mist. May cause irritation of nose, throat and skin. Avoid contact with eyes, skin and clothing. Do not contaminate feed and food stuffs. Keep children and domestic animals off treated areas until this material has been washed into the soil.

ENVIRONMENTAL HAZARDS

Do not apply directly to any body of water. Do not contaminate water by cleaning of equipment or disposal of waste.

DIRECTIONS FOR USE:

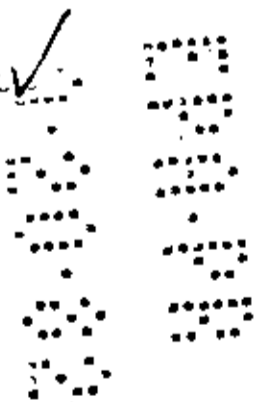
It is a violation of Federal Law to use this product in a manner inconsistent with its labeling.

MSMA 6.6 Herbicide is useful for selective post-emergent weed control, particularly for grassy weeds. Its activity is enhanced by addition of a suitable surfactant to the spray solution. It is most effective on young, actively growing weeds at air temperatures above 70°F. Its phytotoxic properties are quickly inactivated on contact with soil.

MIXING INSTRUCTIONS: MSMA 6.6 Herbicide must be thoroughly mixed. Fill the spray equipment reservoir about half full with water and add the required amount of herbicide and surfactant with agitation. Finish filling the reservoir with water and apply. After use, clean equipment thoroughly by flushing with water. Do not store spray solution in tank for a prolonged period.

COTTON: MSMA 6.6 Herbicide is useful as a directed application in cotton for the post-emergent control of weeds and grasses such as johnsongrass, nutsedge, dallisgrass, cocklebur, barnyardgrass, ragweed, sandbur and puncture vine. It should be applied at the rate of 2½ pints per acre.

Add 6 pints of MSMA 6.6 Herbicide and 1 to 2 quarts of a suitable surfactant to 100 gallons of water and mix thoroughly. Apply spray solution at 40 gallons per acre. Weed control is most effective at temperatures above 70 F. For band application in 40 inch rows, apply 1 gallon of spray per inch of band width per acre. Direct the spray solution to the base of the cotton plant. Nozzles should be placed so as to avoid spraying the cotton foliage. A second application may be required during humid growing conditions to control perennials, such as johnsongrass and nutsedge. Apply the second application 1 to 3 weeks later.



42519-1

Slight burning and a reddish discoloration of the cotton leaf may occasionally occur following the recommended treatment, but the cotton plant will develop normally.

APPLY ONLY WHEN COTTON IS 3 INCHES HIGH TO FIRST BLOOM. DO NOT APPLY AFTER FIRST BLOOM. DO NOT FEED TREATED FOLIAGE TO LIVESTOCK, OR GRAZE TREATED AREAS.

NON-CROP: MSMA 6.6 Herbicide is useful for controlling johnsongrass, nutsedge, barnyardgrass, and other weeds on drainage ditch banks, rights of way, storage yards, and similar non-crop areas.

Mix MSMA 6.6 Herbicide at a rate of 3 to 6 pints, plus 1 to 2 quarts of a suitable surfactant in 100 gallons of water. Spray the unwanted vegetation thoroughly to just short of run-off. Any spray equipment that gives good coverage may be used. If regrowth occurs, reapply as required.

DO NOT CONTAMINATE WATERS USED FOR DOMESTIC CONSUMPTION OR BY ANIMALS, WILDLIFE AND AQUATIC LIFE, OR FOR IRRIGATION PURPOSES.

LAWN AND ORNAMENTAL TURF: MSMA 6.6 Herbicide is useful for control of Dallisgrass, sandbur, bahiagrass, nutsedge, barnyardgrass, chickweed and wood sorrel with little or no injury to good lawn grasses. On new lawns, do not treat until after three mowings. Good grasses may be temporarily discolored. Zoysia, bluegrass, and bermuda are quite tolerant. Do not use on St. Augustine or centipede.

Mow lawns 1 to 1½ inches high before treatment. Mix 1 fluid ounce (2 tablespoons) of MSMA 6.6 Herbicide and ¼ fluid ounce (1 tablespoon) of a suitable surfactant in 5 gallons of water and apply to an area of 1,000 square feet. Spray thoroughly to wet all undesirable plants. Repeat applications, 10 to 14 days apart, may be needed for good control.

3

43519-1

**STORAGE
AND
DISPOSAL**

Do not contaminate water, food or feed by storage or disposal.

PESTICIDE DISPOSAL

Pesticide, spray mixture, or rinse water that cannot be used according to label instructions must be disposed of according to applicable federal, state, or local procedures.

CONTAINER DISPOSAL

Triple rinse (or equivalent). Then offer for recycling or reconditioning, or dispose of in a sanitary landfill, or by incineration if allowed by state and local authorities.

WARRANTY - CONDITION OF SALE:

OUR RECOMMENDATIONS FOR USE of this product are based upon tests believed reliable. Follow directions carefully. Timing and method of application, weather and crop conditions, mixtures with other chemicals not specifically recommended, and other influencing factors in the use of this product are beyond the control of the seller. Buyer assumes all risks of use, storage and handling of this material not in strict accordance with directions given herewith.

In no case shall Pamol or the Seller be liable for consequential, special or indirect damages resulting from the use or handling of this product when such use and/or handling is not in strict accordance with directions given herewith. The foregoing is a condition of sale by Pamol Ltd. and is accepted as such by the Buyer.

BEST DOCUMENT AVAILABLE