

FEB 12 1992

Mr. Deborah L. Davis
Gorgro Chemical Co.
45 W. Center Ave.
Cott Linn, MO 64107

Dear Mr. Davis:

Reference is made to your letter of January 27, 1992, regarding the proposed amendment to the registration requirements for certain pesticides under FIFRA section 2(c)(5). The amendment requires all registrants of similar products to submit such data.

The amendment requires you to submit such data for the registration/re-registration of your product under FIFRA section 2(c)(5) when the Agency requires all registrants of similar products to submit such data.

1. Submit such data for the registration/re-registration of your product under FIFRA section 2(c)(5) when the Agency requires all registrants of similar products to submit such data.
2. Submit five (5) copies of your final printed labeling before you release the product for shipment.

If these conditions are not complied with, the registration will be subject to cancellation in accordance with FIFRA section 6(e). Your release for shipment of the product bearing the amended labeling constitutes acceptance of these conditions.

BEST AVAILABLE COPY

CONCURRENCES

SYMBOL							
SURNAME							
DATE							

A stamped copy of the labeling is enclosed for your records.

Sincerely yours,

DHE

Dennis H. Edwards, Jr.
Product Manager (19)
Insecticide-Rodenticide Branch
Registration Division (H75050)

Enclosure

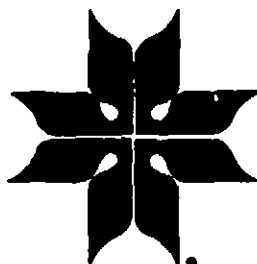
BEST AVAILABLE COPY

ACCEPTED
with COMMENTS
in EPA Letter Dated

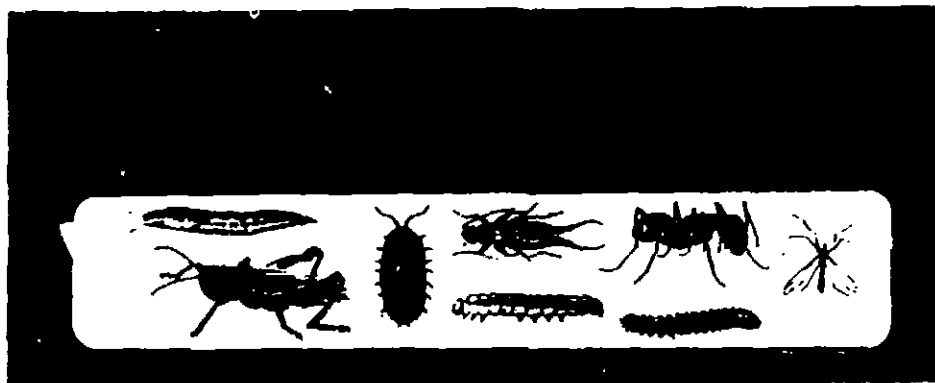
FEB 12 1992

Under the Federal Insecticide,
Fungicide and Rodenticide Act
as amended, for the pesticide
registered under EPA Reg. No.

42057-39



MORGRO



ACTIVE INGREDIENTS:

Carbaryl (1-Naphthyl N-methylcarbamate)*	4.00%
Metaldehyde (2,4,6,8-tetramethyl-1,3,5,7-tetraoxycyclo-octane).	1.00%

INERT INGREDIENTS:	95.00%
------------------------------	--------

TOTAL:	100.00%
--------	---------

*SEVIN^R is the registered trademark of Rhône-Poulenc for Carbaryl Insecticide, U.S. Patent No. 2,903,478.

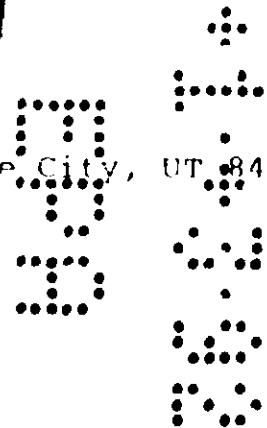
WARNING: KEEP OUT OF REACH OF CHILDREN. SEE SIDE PANEL FOR ADDITIONAL CAUTIONS.

EPA Reg. No. 42057-39
EPA Est. No. 42057-UT-1

NET WEIGHT: 1½ LBS./ .68 Kg.

BEST AVAILABLE COPY

Manufactured by MORGRO CHEMICAL COMPANY
P.O. Box 651048 • 145 West Central Avenue • Salt Lake City, UT 84105



(FRONT PANEL)

PRECAUTIONARY STATEMENTS

Hazards To Humans And Domestic Animals

WARNING:

(Read Before Using)

May be fatal if swallowed or inhaled. DO NOT BREATHE DUST OR VAPORS. Avoid contact with skin, eyes, or clothing. Wash thoroughly after using. KEEP OUT OF REACH OF CHILDREN AND PETS. This pesticide may be fatal to children and dogs or other pets if eaten. Keep children and pets out of treated area. DO NOT USE INSIDE THE HOUSE. This product may be attractive to dogs. Keep dogs away from treated areas. Avoid contamination of feed and foodstuffs. DO NOT APPLY DIRECTLY TO EDIBLE CROPS. Use and store under conditions where there will not be a hazard.

STATEMENT OF PRACTICAL TREATMENT

If in eyes or on skin, flush eyes thoroughly with water; wash skin thoroughly with soap and water.

If swallowed, induce vomiting by administration of syrup of ipecac or under medical supervision, call a physician.

If inhaled, remove from exposure and seek medical attention.

Note to Physician: Carbaryl is a moderate, reversible cholinesterase inhibitor. Atropine is antidotal. Do not use 2-PAM, opiates or cholinesterase inhibiting drugs.

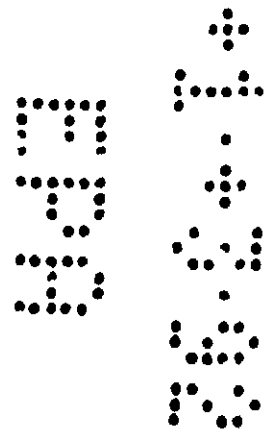
ENVIRONMENTAL HAZARDS

This product is toxic to birds and wildlife. Birds feeding in treated areas may be killed. Do not apply directly to water or wetlands (swamps, bogs, marshes, and potholes). Do not contaminate water when disposing of equipment washwaters. Apply this product only as specified on this label.

This product is highly toxic to bees exposed to direct treatment or residues on plants. Protective information may be obtained from your Cooperative Agricultural Extension Service.

BEST AVAILABLE COPY

(Side Panel - Left)



DIRECTIONS FOR USE

It is a violation of Federal law to use this product in a manner inconsistent with its labeling.

STORAGE AND DISPOSAL

Do not reuse empty container. Wrap container and put in trash collection.

Scatter MORGRO PEST MEAL around annual flowers, vegetables and perennial shrubs bothered by slugs, snails, earwigs, ants, grasshoppers, cutworms, millipedes or sowbugs. Apply at the rate of 1 lb. per 850 square feet. Bait in early spring before pests cause damage. Repeat every 2 to 3 weeks as necessary to control slugs, snails or cutworms. DO NOT APPLY TO FOLIAGE or other plant parts. Protect the following vegetable plants: Asparagus, beans, cabbage, carrots, corn, cucumbers, lettuce, melons, onions, peas, peppers, potatoes, radishes, spinach, squash, tomatoes and turnips.

FOR ADULT STRAWBERRY ROOT WEEVIL:

Apply 1 teaspoon of PEST MEAL around the base of Strawberry plants, Rhododendrons, Camellias, Primroses, and Azaleas. Broadcast lightly on soil surface using 1 lb. per 850 square feet. (DO NOT APPLY DIRECTLY TO PLANTS.) Apply in April or May only, or when weevil is in pupae stage. Repeat treatment in 2 to 3 weeks if hatching weevils continue to appear.

NON-WARRANTY: Manufacturer or Seller makes no warranty, expressed or implied, concerning the use of this product other than for the purposes indicated on the label. Manufacturer or Seller is not liable for any injury or damage caused by this product due to misuse, mishandling or any application not specifically described and recommended on the label.

This package is sold by weight, not volume. Some settling of contents may have occurred during shipment or handling.

(UPC CODE)

BEST AVAILABLE COPY

(SIDE PANEL RIGHT)

