

**PRECAUTIONARY STATEMENTS
HAZARDS TO HUMANS
AND DOMESTIC ANIMALS**

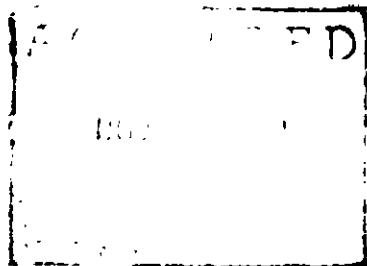
Harmful if swallowed or absorbed through skin. Avoid breathing vapors. Avoid contact with skin. In case of contact, immediately flush skin with plenty of water.

Do not use in commercial food processing, storage, preparation or serving areas. In the home, all food processing surfaces and utensils should be covered during treatment, or thoroughly washed before use. Cover exposed food.

Remove pets, birds, and cover fish aquariums before spraying.

PHYSICAL HAZARDS

Contents under pressure. Do not use or store near heat or open flame. Do not puncture or incinerate container. Exposure to temperatures above 130°F may cause bursting.



OMNICIDE

Professional Strength Insect Killer

For Use in Households, Non-Food areas of warehouses, hotels, motels, Food processing plants, Theatres, Schools and Offices.

ACTIVE INGREDIENTS:

Tetramethrin[(1-Cyclohexene-1, 2-dicarboximido) methyl 2,2-dimethyl-3-(2-methylpropenyl) cyclopropanecarboxylate]400%
*3-Phenoxybenzyl d-cis and trans** 2, 2-dimethyl-3-(2-methylpropenyl) cyclopropanecarboxylate287%
*Other isomers013%

INERT INGREDIENTS: 99.300%
100.000%

*d-(cis, trans) phenothrin

**cis/trans isomer ratio: max. 25% (+ or -) cis
min 75% (+ or -) trans

KEEP OUT OF REACH OF CHILDREN

CAUTION

See Back Panel for Additional Precautionary Statements

Kills Common Pests:

House Flies, Mosquitoes, Cockroaches,
Fire Brats, and other listed on back panel.

NET CONTENTS

Delta Chemicals, Incorporated
Worthington, Pennsylvania

EPA Reg. No. 41926-17

EPA Est. No. 41926-PA-01

DIRECTION FOR USE

GENERAL CLASSIFICATION

It is a violation of Federal law to use this product in a manner inconsistent with its labeling.

SHAKE BEFORE USE. HOLD CONTAINER UPRIGHT. APPLY IN SHORT BURSTS.

To Kill House Flies, Mosquitoes, Small Flying Moths, Gnats and Wasps: Close all doors and windows and direct spray upward into center of room with a slow sweeping motion. Spray 5-10 seconds for average room. Keep room closed for 15 minutes after spraying. Ventilate room thoroughly before re-entry. Sweep up and destroy fallen insects.

To Kill Cockroaches, Ants and Crickets: Contact as many insects as possible with the spray in addition to thorough spraying of all parts of the room suspected to harbouring these pests. Special attention should be paid to cracks, hidden surfaces under sinks, behind stoves and refrigerators, food storage areas and wherever these pests are suspected of hiding. To kill ants, treat doors, around window frames, ant trails and other areas of entry. Repeat as necessary.

To Kill Carpet Beetles: Directly spray as many insects as possible. Spray both interior and exterior of upholstered furniture. Both top and bottom of rugs and carpets should be sprayed thoroughly. Also treat shelves, closets, areas under furniture and wherever these insects are seen or suspected. Repeat as necessary.

To Kill Exposed Forms of Confused Flour Beetles, Saw-Toothed Grain Beetles, and Rice Weevils: Find and destroy infested package goods. Remove all other items from pantry. Spray the shelves to kill any of the named insects present. Place clean paper on the shelves and return packages after shelves have dried. Repeat as necessary.

To Kill Sawbugs, Centipedes, Firebrats and Spiders: Contact as many insects as possible with the spray. Also thoroughly spray all parts of the room suspected of harbouring these pests. Special attention should be paid to cracks, crevices, hidden surfaces under sinks, behind stoves and refrigerators.

To Kill Fleas and Brown Dog Ticks: Remove and destroy old pet bedding. Spray sleeping quarters of pets, around baseboards, window and door frames, wall cracks and local areas of floors. Repeat as necessary. Do not spray animals. Put fresh bedding in pets quarters after spray has dried. Also treat dogs and cats with a registered flea and tick control product before allowing them to enter treated area.

STORAGE AND DISPOSAL

Storage: Store in a cool area away from heat or open flame.
Disposal: Do not reuse empty container. Wrap container and put in trash collection.

BEST DOCUMENT AVAILABLE