

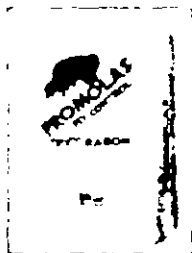
For good ^{NU} nutrition and effective fly control:

PROMOLAS[®] FLY CONTROL MOLASSES SUPPLEMENT

WITH
RABON[®]
ORAL LARVICIDE

- Economical, effective, convenient combination of Dried Molasses and RABON insecticide.
- Prevents development of Horn, Face, House & Stable Flies in the manure of treated cattle; and House Flies in the manure of treated swine.
- Approved for use in lactating dairy cattle.
- Zero withdrawal in beef cattle and swine.

At all times, the fly problem is a major concern of the livestock producer. The fly problem is not only a nuisance, but it is also a major pest of livestock. Fly control is essential for the health and welfare of the animal. The fly problem is a major pest of livestock. Fly control is essential for the health and welfare of the animal. The fly problem is a major pest of livestock. Fly control is essential for the health and welfare of the animal.



PROMOLAS is a molasses supplement containing RABON, an oral larvicide. It is used to control house flies, horn flies, and stable flies in the manure of treated livestock. It is economical, effective, and convenient to use.

ACCEPTED

MAY 6 1983

U.S. Federal Insecticide, Fungicide, and Rodenticide Act
Registered under
EPA Reg. No. 40833-11



PACIFIC MOLASSES COMPANY

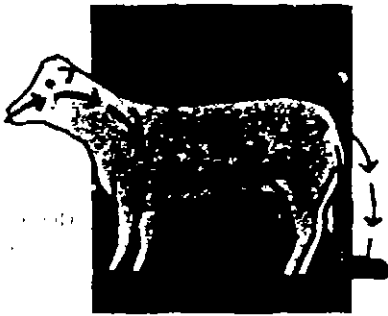


Feeding PROMOLAS Fly Control to cattle or swine is economical, nutritious, and a convenient way to an effective fly control program.

Livestock feeding the product is economical. Feed additive methods are the most convenient and effective. They are also the most economical way to better performance and health of your animals. The PROMOLAS treatment is a simple, effective method of fly control. It is a feed additive that is added to the feed of your animals. It is a simple, effective method of fly control. It is a feed additive that is added to the feed of your animals.

The PROMOLAS treatment is a simple, effective method of fly control. It is a feed additive that is added to the feed of your animals. It is a simple, effective method of fly control. It is a feed additive that is added to the feed of your animals.

Save the money flies cost you! Fly control is a major expense for many livestock producers. The PROMOLAS treatment is a simple, effective method of fly control. It is a feed additive that is added to the feed of your animals. It is a simple, effective method of fly control. It is a feed additive that is added to the feed of your animals.



Save the money flies cost you!

Save the money flies cost you! Fly control is a major expense for many livestock producers. The PROMOLAS treatment is a simple, effective method of fly control. It is a feed additive that is added to the feed of your animals. It is a simple, effective method of fly control. It is a feed additive that is added to the feed of your animals.

COMPARISON OF CATTLE ORAL LARVICIDES REGISTERED FOR FEED ADDITIVE USE						
	1	2	3	4	5	6
RABON	X	X	X	X	X	X

It doesn't take special handling to feed PROMOLAS Fly Control as recommended. Just mix it into your animal's feed.

- topdress the required amount on hay or silage
- mix it with grain and/or mineral rations,
- feed it straight in stanchions or milking parlor

It doesn't take special handling to feed PROMOLAS Fly Control as recommended. Just mix it into your animal's feed.

Feeding instructions:

Cattle - Topdress hay or silage with the required amount of PROMOLAS Fly Control. Mix it with grain and/or mineral rations. Feed it straight in stanchions or milking parlor.

Pigs - Mix the required amount of PROMOLAS Fly Control with the feed. Feed it straight in stanchions or milking parlor.

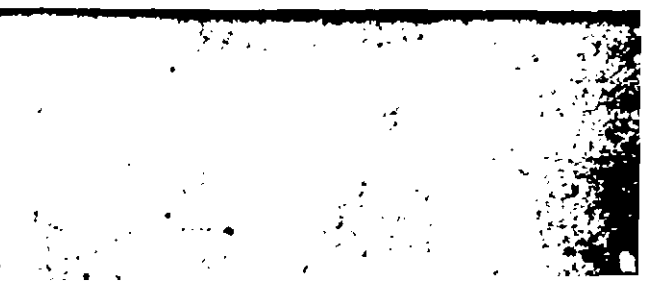
Sows, Boars & Breeding Gilts - Mix the required amount of PROMOLAS Fly Control with the feed. Feed it straight in stanchions or milking parlor.

It doesn't take special handling to feed PROMOLAS Fly Control as recommended. Just mix it into your animal's feed.

Feeding season & management

Feeding PROMOLAS Fly Control is a simple, effective method of fly control. It is a feed additive that is added to the feed of your animals. It is a simple, effective method of fly control. It is a feed additive that is added to the feed of your animals.

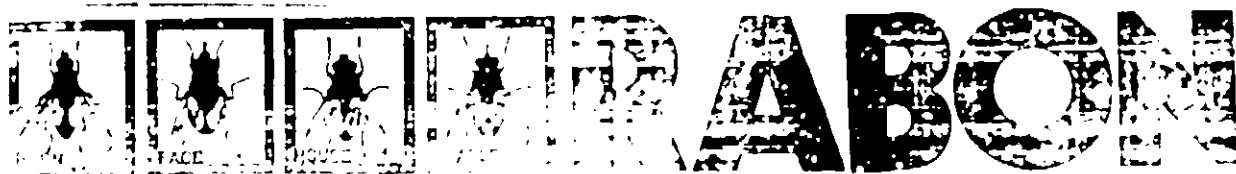
Feeding PROMOLAS Fly Control is a simple, effective method of fly control. It is a feed additive that is added to the feed of your animals. It is a simple, effective method of fly control. It is a feed additive that is added to the feed of your animals.





PROMOLAS FLY CONTROL MOLASSES SUPPLEMENT

WITH 0.34%



ORAL LARVICIDE

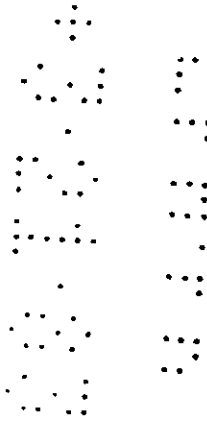
Types of flies that can be controlled by this product are: House Flies, Stable Flies, and
Black Flies. It is effective against the larvae in the manure of treated animals.

Directions for Use: Add 1/2 cup of this product to the daily ration of each animal. Repeat every 10 days.

Net Weight: 50 lbs. (22.7 kg)
Net Content: 1000 grams (35.3 oz.)
Manufactured by: [unreadable]
[unreadable] 4000 [unreadable]
[unreadable] 4000 [unreadable]

CAUTION

Read the entire label carefully before using this product.



GENERAL CLASSIFICATION

It is a violation of Federal law to use this product in a manner inconsistent with its labeling. Start feeding RABON larvicidal feeds early in the spring before flies begin to appear and continue feeding throughout the summer and into the fall until cold weather restricts fly activity. Rations containing RABON ORAL LARVICIDE may be fed up to slaughter and to lactating dairy cows without withholding the milk from market during or after treatment. RABON ORAL LARVICIDE prevents the development of horn flies, face flies, house flies and stable flies in the manure of treated cattle and house flies in treated swine, but is not effective against existing adult flies. In some cases, supplemental fly control measures may be needed in and around cattle lots and barns to control adult house flies and stable flies which can breed not only in manure but in other decaying vegetable matter or sludge on the premises. In order to achieve optimum fly control, this product should be used in conjunction with other good management and sanitation practices.

CATTLE

For Hand Feeding

Feed 1/2 pound per day of PROMOLAS FLY CONTROL Molasses Supplement with 0.34% RABON to cattle weighing between 400 and 1200 pounds. For larger cattle weighing between 1200-1700 pounds feed 3/4 pound per day.

Mixing Directions for Finished Feeds:

The following table shows the correct amount of PROMOLAS FLY CONTROL Molasses Supplement with 0.34% RABON to be mixed into a complete daily ration in order to provide the recommended average daily intake of 70 mg of RABON ORAL LARVICIDE per hundred pounds of body weight. Determine your cattle's average body weight, find this figure in the left column. Then determine the average consumption of your complete daily ration and find this in the top column. Cross reference and you will find amount of PROMOLAS FLY CONTROL Molasses Supplement with 0.34% RABON to be mixed per ton of your ration. Mixing time should be adequate to assure uniform dispersion. Optimum performance can be assured only if PROMOLAS FLY CONTROL Molasses Supplement with 0.34% RABON is dispersed uniformly with the feedstuff at the recommended level. Common feed mixing equipment (i.e., vertical mixers, horizontal blenders, mixer-feeder trucks) may be used to prepare formulated feed.

Average Daily Consumption of Finished Feed (Per Head)

Average Weight of Animals (lbs)	4	5	6	7	8	9	10	15	20	25	30
	lbs/hd	lbs/hd	lbs/hd	lbs/hd	lbs/hd	lbs/hd	lbs/hd	lbs/hd	lbs/hd	lbs/hd	lbs/hd
400 lbs.	91	73	60	52	45	40	36	24	18	15	12
500	113	91	76	65	57	50	45	30	23	18	15
600	136	109	91	78	68	60	54	36	27	22	19
700	159	127	105	91	79	71	63	42	32	25	21
800	198	159	132	113	99	88	79	53	40	32	28
900	204	163	136	117	102	91	82	54	41	33	27
1000	227	181	151	130	113	101	91	60	45	36	30
1100	249	199	166	142	125	111	100	66	50	40	33
1200	272	218	181	155	136	121	109	73	54	44	38
1300	295	238	198	168	147	131	118	79	59	47	39
1400	317	254	212	181	159	141	127	85	63	51	42
1500	340	272	227	194	170	151	138	91	68	54	45
1600	363	290	242	207	181	161	145	97	73	58	48
1700	385	308	257	220	193	171	154	103	77	62	51
1800	408	326	272	233	204	181	163	109	82	65	54
1900	431	345	287	246	215	191	172	115	88	69	57
2000	453	363	302	259	227	201	181	121	91	73	60

Pounds of PROMOLAS FLY CONTROL Molasses Supplement with 0.34% RABON per ton of finished feed.

SWINE

All swine should be treated.

Pigs (weaners to market weight):

Mix 29.5 lbs. of this product per ton of meal type feed and offer free choice. This is equivalent to 22.7 mg. of RABON per lb. of feed.

Sows, Boars and Breeding Gilts:

Mix 59 lbs. of this product per ton of meal type feed and offer 4-6 lbs. of feed per animal per day. This is equivalent to 45.4 mg. of RABON per lb. of feed.

PRECAUTIONARY STATEMENTS HAZARDS TO HUMANS CAUTION

Harmful if swallowed. Avoid contact with skin and eyes. Avoid breathing dust. Wash thoroughly with soap and water after handling and before eating or smoking. If in eyes, wash with plenty of water. If irritation persists, see a physician.

ENVIRONMENTAL HAZARDS

This product is toxic to fish. Keep out of lakes, streams or ponds. Do not contaminate water by cleaning of equipment or disposal of wastes.

STORAGE AND DISPOSAL

Do not contaminate water, food or feed by storage or disposal.

Pesticide Disposal: Pesticides that cannot be used according to label instructions must be disposed of according to applicable Federal, State or Local procedures.

Container Disposal: Completely empty bag by shaking and tapping sides and bottom to loose clinging particles. Empty residue into application equipment. Then dispose of bags in a sanitary landfill or by incineration if allowed by State or Local authorities.

PROMOLAS³ FLY CONTROL MOLASSES SUPPLEMENT
with
0.34% RABON³ ORAL LARVICIDE

To prevent the development of Horn Flies, Face Flies, House Flies and Stable Flies in the manure of treated cattle and House Flies in the manure of treated swine.

ACTIVE INGREDIENT

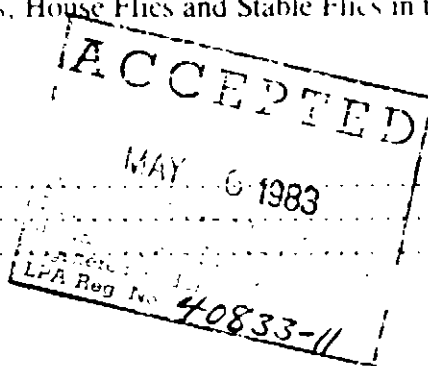
2-Chloro-1-(2, 4, 5-trichlorophenyl)
vinyl dimethyl phosphate

INERT INGREDIENTS

Total

* Each pound contains 1.52 g RABON

** Refers only to ingredients which are not larvicidal.



BY WEIGHT

0.34% *

99.66% **

100.00%

FEED INGREDIENTS

Molasses Products and Roughage Products

GUARANTEED ANALYSIS

Crude Protein, not less than	5.0%
Crude Fat, not less than	0.3%
Crude Fiber, not more than	32.0%
Total Sugar (as invert), not less than	38.0%

KEEP OUT OF REACH OF CHILDREN

CAUTION

See below for additional precautionary statements

DIRECTIONS FOR USE
GENERAL CLASSIFICATION

It is a violation of Federal law to use this product in a manner inconsistent with its labeling

Start feeding RABON larvicidal feed early in the spring before flies begin to appear and continue feeding throughout the summer and into the fall until cold weather restricts fly activity. Rations containing RABON ORAL LARVICIDE may be fed up to slaughter and to lactating dairy cows without withholding the milk from market during or after treatment. RABON ORAL LARVICIDE prevents the development of horn flies, face flies, house flies and stable flies in the manure of treated cattle and house flies in treated swine, but is not effective against existing adult flies. In some cases, supplemental fly control measures may be needed in and around cattle lots and barns to control adult house flies and stable flies which can breed not only in manure but in other decaying vegetable matter or silage on the premises. In order to achieve optimum fly control, this product should be used in conjunction with other good management and sanitation practices.

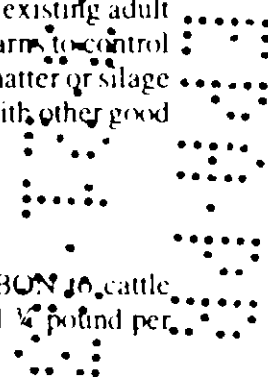
CATTLE

For Hand Feeding:

Feed 1/2 pound per day of PROMOLAS FLY CONTROL Molasses Supplement with 0.34% RABON to cattle weighing between 400 and 1200 pounds. For larger cattle weighing between 1200-1700 pounds feed 3/4 pound per day.

Mixing Directions for Finished Feeds:

The following table shows the correct amount of PROMOLAS FLY CONTROL Molasses Supplement with 0.34% RABON to be mixed into a complete daily ration in order to provide the recommended average daily intake of 70 mg of RABON Oral Larvicide per hundred pounds of body weight. Determine your cattle's average body weight, find this figure in the left column. Then determine the average consumption of your complete daily ration and find this in the top column. Cross reference and you will find amount of PROMOLAS FLY CONTROL Molasses Supplement with 0.34% RABON to be mixed per/ton of your ration. Mixing time should be adequate to assure uniform dispersion. Optimum performance can be assured only if PROMOLAS FLY CONTROL Molasses Supplement with



Average Daily Consumption of Finished Feed (Per Head)

Average Weight of Animals (lbs)	4 lbs/hd	5 lbs/hd	6 lbs/hd	7 lbs/hd	8 lbs/hd	9 lbs/hd	10 lbs/hd	15 lbs/hd	20 lbs/hd	25 lbs/hd	30 lbs/hd
400 lbs	91	73	60	52	45	40	36	24	18	15	12
500 lbs	113	91	76	65	57	50	45	30	23	18	15
600 lbs	136	109	91	78	68	60	54	36	27	22	18
700 lbs	159	127	106	91	79	71	63	42	32	25	21
800 lbs	198	159	132	113	99	88	79	53	40	32	26
900 lbs	204	163	136	117	102	91	82	54	41	33	27
1000 lbs	227	181	151	130	113	101	91	60	45	36	30
1100 lbs	249	199	166	142	125	111	100	66	50	40	33
1200 lbs	272	218	181	155	136	121	109	73	54	44	36
1300 lbs	295	236	196	168	147	131	118	79	59	47	39
1400 lbs	317	254	212	181	159	141	127	85	63	51	42
1500 lbs	340	272	227	194	170	151	136	91	68	54	45
1600 lbs	363	290	242	207	181	161	145	97	73	58	48
1700 lbs	385	308	257	220	193	171	154	103	77	62	51
1800 lbs	408	326	272	233	204	181	163	109	82	65	54
1900 lbs	431	345	287	246	215	191	172	115	86	69	57
2000 lbs	454	363	302	259	227	201	181	121	91	73	60

Pounds of PROMOLAS-FLY CONTROL Molasses Supplement with 0.34% RABON per ton of finished feed

SWINE:

All swine should be treated

Pigs (weaners to market weight)

Mix 29.5 lbs. of this product per ton of meal type feed and offer free choice. This is equivalent to 22.7 mg. of RABON per lb. of feed.

Sows, Boars and Breeding Gilts

Mix 59 lbs. of this product per ton of meal type feed and offer 4-6 lbs. of feed per animal per day. This is equivalent to 45.4 mg. of RABON per lb. of feed.

**PRECAUTIONARY STATEMENTS
HAZARDS TO HUMANS
CAUTION**

Harmful if swallowed. Avoid contact with skin and eyes. Avoid breathing dust. Wash thoroughly with soap and water after handling and before eating or smoking. If in eyes, wash with plenty of water. If irritation persists, see a physician.

ENVIRONMENTAL HAZARDS

This product is toxic to fish. Keep out of lakes, streams or ponds. Do not contaminate water by cleaning of equipment or disposal of wastes.

STORAGE AND DISPOSAL

Do not contaminate water, food or feed by storage or disposal.

Pesticide Disposal: Pesticide that cannot be used according to label instructions must be disposed of according to applicable Federal, State or Local procedures.

Container Disposal: Completely empty bag by shaking and tapping sides and bottom to loosen clinging particles. Empty residue into application equipment. Then dispose of bags in a sanitary landfill or by incineration if allowed by State or Local authorities.

EPA REG. NO. 40833-1
EPA EST. NO. 40833 IN 02
NET WEIGHT 50 pounds

Patent Pending
RABON is a registered trademark of Shell Oil Company
PROMOLAS is a registered trademark of Pacific Molasses Company.
LOT NO.

Manufactured By
Pacific Molasses Company