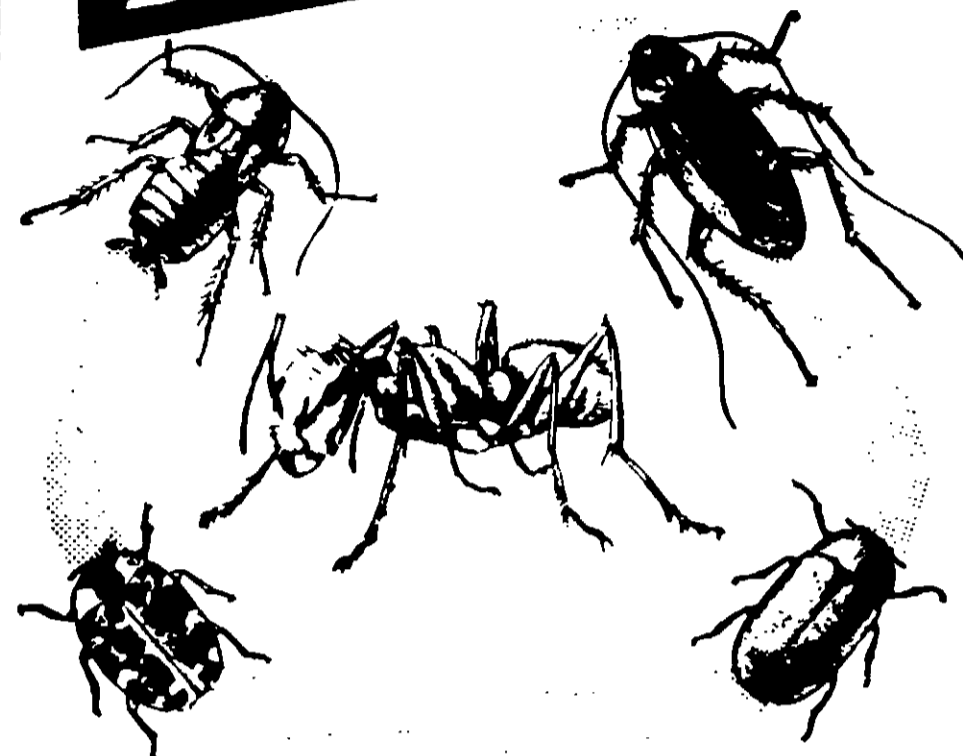


NET WEIGHT ONE POUND

**Tobacco States**  
BRAND



# 5% Chlordane Dust

**Kills 3 ways**

- By Contact
- By Eating
- By Vapor

For the control of lawn and household insects as:  
**ANTS, CHIGGERS, ROACHES,  
WATERBUGS, CARPET BEETLES**

**ACTIVE INGREDIENT:**

Technical Chlordane 5.0%

**INERT INGREDIENTS:**

95.0%

Equivalent to 3% octachloro  $\alpha$ , 7-methano-tetrahydroindane and 2% related compounds.

Harmful if swallowed. Avoid inhalation of dust. Avoid skin contact. In case of contact with skin, wash with soap and water. Avoid contamination of feed and foodstuffs.

**CAUTION:** Keep out of reach of children.  
See other Cautions on back panel

## PESTICIDE

ACCEPTED  
DEC 26 1967  
5967

To protect bees do not apply when crops are in bloom. Remove or cover hives if application is necessary during bloom.

This product is toxic to fish and wildlife. Keep out of lakes, ponds and streams. Do not apply to any area not specified on the label.

Do not use this product on dairy animals, in dairy barns, or on feed or forage to be fed to dairy animals or other animals being finished for slaughter.

Do not reuse empty containers. Destroy them by burying with waste or burning. Stay away from smoke or fumes.

### DIRECTIONS

**ANTS: IN HOUSEHOLDS** — Dust thoroughly ant trails and areas around door sills and window frames where the pests may enter the premises. It is frequently desirable to treat the openings around water pipes, heat ducts, electrical outlets and baseboards where ants may come out into rooms from wall spaces and partitions. Repeat treatments as often as necessary to maintain effective control.

Do not permit children or pets to go on treated area unless the insecticide has been washed off the grass into the soil by drenching or sprinkling with water and grass has completely dried.

**ROACHES, WATERBUGS** — Dust thoroughly infested cracks, baseboards and other hiding places. Apply locally on exposed surfaces where roaches will crawl when they come out of hiding. It is also important to follow good housekeeping rules by reducing food supply. Repeat treatment when necessary.

**SILVERFISH** — Dust thoroughly baseboards, areas behind shelving, bookcases and storage areas and other infested cracks or hiding places. Also apply locally on exposed surfaces where silverfish will crawl when they come out of hiding. Repeat treatment when necessary.

**CARPET BEETLES** — Dust localized areas of the floor, baseboards, and closet shelves and work the material into cracks where the insects may be found. Teat underside of carpets. Repeat treatment when necessary.

**BROWN DOG TICKS** — Dust thoroughly infested cracks and other hiding or resting places such as around baseboards, window and door frames, wall cracks, sleeping quarters of household pets and local areas on floors and floor coverings. Fresh bedding should be placed in animal quarters following treatment. Do not treat pets or other animals.

**IN LAWNS** — For the control of Fire Ants, Argentine Ants, Pharaoh Ants, and all other species commonly found in lawns, dust thoroughly at the rate of  $\frac{1}{2}$  to 1 lb. per 1000 sq. ft. of lawn. Dust thoroughly in and around ant hills.

**CHIGGERS:** Dust at the rate of 1 lb. per 1000 sq. ft. of lawn area. For best results, dust the entire lawn at one time, treating the soil, ground litter, and vegetation to assure complete protection.

Tobacco States Chemical Co., Inc. **MAKES NO WARRANTY OF MERCHANTABILITY, FITNESS FOR ANY PURPOSE, OR OTHERWISE, EXPRESS OR IMPLIED,** concerning this product or its use, which extend beyond the statements on this label.

USDA Reg. 226-19

**TOBACCO STATES CHEMICAL CO., INC.**  
LEXINGTON, KENTUCKY

# SHANNA

## CHLOROBENZILATE TECHNICAL

For Manufacturing Purposes Only - Not For Resale Under This Label

ACTIVE INGREDIENT:

Ethyl 4,4' - dichlorobenzilate ..... 92%

INERT INGREDIENT

..... 8%

TOTAL 100%

### WARNING

KEEP OUT OF THE REACH OF CHILDREN

**POISONOUS BY SKIN CONTACT, INHALATION OR SWALLOWING.** Rapidly absorbed through skin. In case of skin contact, **WASH IMMEDIATELY** with soap and water. 40231-120

**DO NOT GET IN EYES, ON SKIN OR ON CLOTHING.** In case of eye contact, flush with plenty of water, for at least 15 minutes and get medical attention.

**DO NOT BREATHE DUST.** Wash thoroughly after handling. Wear a mask or respirator of the type recommended by the U. S. Department of Mines for protection against this material.

**THIS PRODUCT IS TOXIC TO FISH.** Keep out of lakes, streams, or ponds. **DO NOT CONTAMINATE WATER** by cleaning of equipment, or disposal of wastes.

**DO NOT REUSE EMPTY CONTAINER.** Destroy it by burying with waste or burning. Stay away from smoke or fumes.

Net Weight 100 Lbs.

EPA Reg. No. 20178-1

**Shanna Company Inc.**

130 Route 22, North Plainfield, New Jersey 07060

