

39039-13

01/06/2003

1/12



U.S. ENVIRONMENTAL PROTECTION AGENCY  
Office of Pesticide Programs  
Registration Division (7505C)  
1200 Pennsylvania Ave., N.W.  
Washington, D.C. 20004

EPA Reg. Number:  
39039-13

Date of Issuance:  
JAN 6 2003

Term of Issuance: Conditional

NOTICE OF PESTICIDE:

Registration  
 Reregistration

(under FIFRA, as amended)

Name of Pesticide Product:  
Equanimity™ Insecticide Kit

Name and Address of Registrant (include ZIP Code):

Y-TEX Corporation  
P.O. Box 1450  
1825 Big Horn Avenue  
Cody, WY 82414-1450

Note: Changes in labeling differing in substance from that accepted in connection with this registration must be submitted to and accepted by the Registration Division prior to use of the label in commerce. In any correspondence on this product always refer to the above EPA registration number.

On the basis of information furnished by the registrant, the above named pesticide is hereby registered/reregistered under the Federal Insecticide, Fungicide and Rodenticide Act.

Registration is in no way to be construed as an endorsement or recommendation of this product by the Agency. In order to protect health and the environment, the Administrator, on his motion, may at any time suspend or cancel the registration of a pesticide in accordance with the Act. The acceptance of any name in connection with the registration of a product under this Act is not to be construed as giving the registrant a right to exclusive use of the name or to its use if it has been covered by others.

This product is conditionally registered in accordance with FIFRA sec. 3(c)(7)(A), provided that you:

1. Submit and/or cite all data required for registration/reregistration of your product under FIFRA sec. 3(c)(5) when the Agency requires all registrants of similar products to submit such data; and submit acceptable responses required for reregistration of you product under FIFRA section 4.
2. Submit two (2) copies of your final printed label before you release the product for shipment. efer to the A-79 enclosure for a further description of final printed labeling.

If these conditions are not complied with, the registration will be subject to cancellation in accordance with FIFRA section 6(e). Your release for shipment of the product bearing amended labeling constitutes acceptance of these conditions. A stamped copy of the label is enclosed for your records.

If you have any questions regarding this action, please contact Susan Stanton of my team at (703) 305-5218.

Sincerely,

George T. LaRocca  
Product Manager (13)  
Insecticide Branch  
Registration Division (7505C)

Enclosures

Signature of Approving Official:

*Susan L. Stanton, for George T. LaRocca*

Date:

JAN 6 2003

2/12

Keep Out of Reach of Children

**CAUTION**

SEE SIDE PANEL OR INSIDE BOOKLET  
FOR ADDITIONAL PRECAUTIONARY  
STATEMENTS



# EQUANIMITY

## INSECTICIDE KIT

**ACTIVE INGREDIENT**

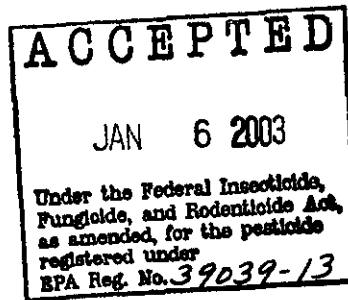
Permethrin\* . . . . . 10%

**INERT INGREDIENTS† . . . 90%**

**TOTAL . . . . . 100%**

\*cis/trans ratio: Min. 35%(±)cis and  
Max. 65%(±) trans.

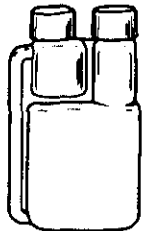
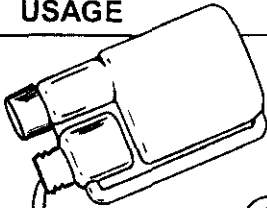
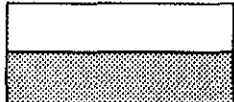


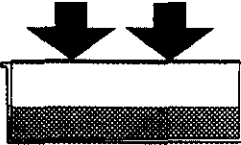
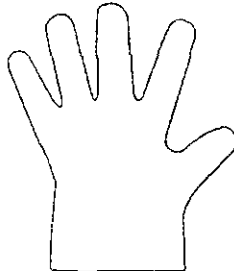
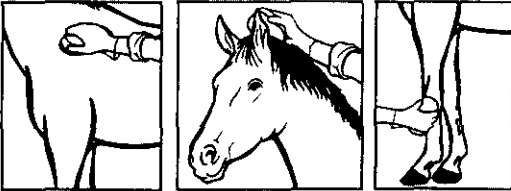
†Contains Petroleum Distillate.



**PROTECTS ONE HORSE FOR 4 WEEKS**

4 fl ozs. Ready-to-Use Insecticide, 1 Applicator, 4 Plastic Gloves

Outside Front Panel of Box

CONTENTS	USAGE
	
<p>1 4oz. Bottle 10% permethrin</p>	<p><b>EASY AS</b>  <b>1 2 3</b></p>
	<p><b>1</b>  Wearing protective glove,  pour desired dose into  container.</p>
<p>1 Foam Applicator</p>	
	<p><b>2</b>  Place foam applicator  in charged container, then....</p>
<p>1 Plastic Container to  Charge Foam Applicator</p>	
	<p>compress foam to  distribute dose in applicator.</p>
<p>4 Protective Plastic Gloves</p>	
	<p><b>3</b> Apply desired dose to the appropriate location,  depending on the pest to be controlled.</p>
<p><b>FOR GENERAL PEST CONTROL:</b> Apply Equanimity as a whole body wipe once every 7 days at the Maximum Rate of 6ml/200 lbs. body wt. (Max.Dose=30mls/horse.) For improved results against specific pests, follow the instructions on the back of the box. Read entire label before each use.</p>	

Inside Front Panel of Box

# EQUANIMITY

## *Insecticide for Horses*

### PRECAUTIONARY STATEMENTS HAZARDS TO HUMANS AND DOMESTIC ANIMALS

#### CAUTION

Avoid contact with skin, eyes or clothing. Wash thoroughly with soap and water after handling.

#### FIRST AID

**Note to Physician:** Contains petroleum distillates. May pose an aspiration pneumonia hazard. Have the product container or label with you when calling a poison control center or going for treatment. You may also contact 1-800-255-3924 (CHEM-TEL, INC.) for emergency medical treatment information.

#### PHYSICAL & CHEMICAL HAZARDS

Do not use or store near heat or open flame. Do not use this product in or on electrical equipment due to the possibility of shock hazard.

#### ENVIRONMENTAL HAZARDS

Do not apply directly to water.

#### STORAGE AND DISPOSAL

Do not contaminate water, food or feed by storage or disposal.

**Pesticide Storage and Spill Procedures:** Store upright at room temperature. Avoid exposure to extreme temperatures. In case of spill or leakage, soak up with an absorbent material such as sand, sawdust, earth, fuller's earth, etc. Dispose of with chemical waste.

#### Disposal:

**If empty:** Do not reuse this container. Place in trash or offer for recycling if available.

**If Partly Filled:** Call your local solid waste agency for disposal instructions. Never place unused product down any indoor or outdoor drain.



YTP-000-000

Left Side Panel of Box

# EQUANIMITY

## *Insecticide Kit*

### INTEGRATED PEST MANAGEMENT (IPM)

Effective pest control on horses first requires a basic understanding of the different pests involved. The preferred feeding sites on the animal, breeding sites for immature stages and resting sites for the adults all must be considered when designing an Integrated Pest Management program (IPM). An IPM program should involve every aspect of your horse facility starting with the design and construction of the entire facility.

The three components of an IPM program are chemical, cultural, and biological. Insecticides applied directly to horses are an important component of chemical control and for certain pests the only practical strategy. Cultural control means removal of breeding sites for immature stages and resting sites for adults. Cultural control also includes the use of mechanical control such as screens and air blast fans that prevent flying insects from entering barns. Biological control means the protection and/or release of beneficial insects. This strategy requires the judicious use of premise insecticides.

The enclosed label will tell you how to use EQUANIMITY as part of the chemical component in an IPM Program. In addition, it will help identify the pests and list additional strategies to aid in control of pest problems. To develop an effective Integrated Pest Management program, contact your local county Cooperative Extension Service office for assistance.

EPA Reg. No.39039-13.  
EPA Est. No.39578-TX-1  
Manufactured for:  
TUTTLE'S HORSE CARE DIVISION  
Y-TEX Corp., 1825 Big Horn Ave., Cody, WY 82414

Right Side Panel of Box

Read entire label before each use.

**DIRECTIONS FOR USE**

It is a violation of Federal law to use this product in a manner inconsistent with its labeling.

**FOR GENERAL PEST CONTROL:** Apply Equanimity as a whole body wipe once every 7 days at the Maximum Rate of 6 ml/200 lbs. body wt. (Max. Dose= 30 mls/horse.) For improved results against these specific pests, follow the instructions below. Do not exceed Max. Rate or Max. Dose.

**MOSQUITOES**

Mosquitoes: apply 6 ml/200 lbs. body wt. once every 7 days as a whole body wipe. For improved control, apply 3 ml/200 lbs. body wt. once every 3-4 days as a whole body wipe.



**HOUSE FLY AND STABLE FLY**

House flies: apply 1 ml/200 lbs. body wt. once every 3-4 days to



the face, being careful to avoid getting in the eyes. Stable flies: apply 3 ml/200 lbs. body wt. once every 3-4 days to the legs, belly and chest.

**BLACK FLIES AND EYE GNATS**

Black flies: apply 6 ml/200 lbs. body wt. once every 7 days to inside surface of the ears, throat area and midline of the belly. Eye gnats: apply 1 ml/200 lbs. body wt. once every 3-4 days to the face, being careful to avoid getting in the eyes.

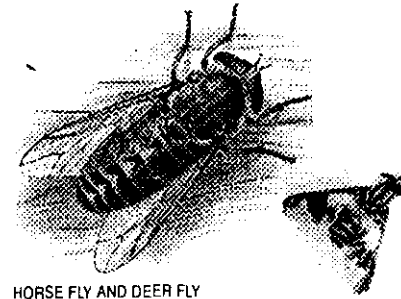
**TICKS AND LICE**

Ticks and Lice: apply 6 ml/200 lbs body wt. once every 7 days as a whole body wipe, paying particular attention to those areas of the body that are most heavily infested. Depending on the species, that may be between the front and hind legs, in the mane and tail, or in the ears for some species of ticks. Lice should be eliminated by 3 weekly treatments.



**FACE FLY AND HORN FLY**  
Face flies: apply 1 ml/200 lbs. body wt. once every 3-4 days over the face being careful to avoid getting it in the eyes.

Horn flies: apply 6 ml/200 lbs. body wt. once every 7 days as a whole body wipe. For horn flies only, apply 30 ml as pour-on over the withers (do not ride for 24 hrs.)



**HORSE FLY AND DEER FLY**

For both horse flies and deer flies: apply 3 ml/200 lbs. body wt. once every 3-4 days over the whole body paying particular attention to where the flies are biting. Some species prefer to feed on certain areas of the body to others.



**HORSE BOT FLIES**

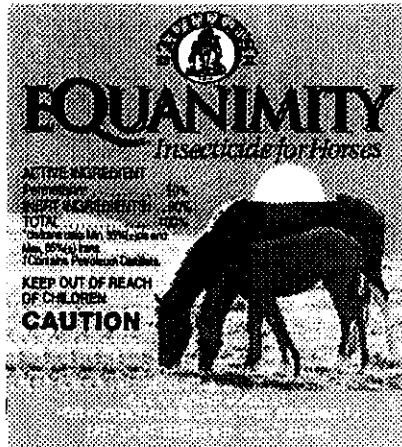
Common bot flies: apply 3 ml/200 lbs body wt. once every 3-4 days to the legs, chest, belly and flanks.

Back Panel of Box

6/12

- **Repels mosquitoes for up to 5 days, including those that may transmit *Equine Encephalitis* and *West Nile Virus*.**
- **Kills and repels *Black Flies* and *Ticks*, including those ticks that may transmit *Lyme Disease*.**
- **Reduces *Bot Fly* eggs laid on horses for up to 4 days.**
- **Precise dose directly from the container.**
- **Rain-resistant formulation.**

Top Panel of Box



  
**EQUANIMITY**  
*Insecticide for Horses*

ACTIVE INGREDIENT  
 Permethrin\* ..... 10%  
 INERT INGREDIENTS† ... 90%  
 TOTAL ..... 100%  
\*Active ingredient Min. 35% (oz) and  
 Max. 85% (g) Vials.  
 †Contains Petroleum Distillate.

**KEEP OUT OF REACH  
 OF CHILDREN**  
**CAUTION**

SEE ATTACHED BOOKLET  
 FOR ADDITIONAL PRECAUTIONARY STATEMENTS  
 NET CONTENTS: 4 fl. ozs. (120 ml)

Front Label on 4 fl. oz. Bottle

8/12

# Booklet Attached to Back of 4 fl. oz. Bottle

## PRECAUTIONARY STATEMENTS HAZARDS TO HUMANS AND DOMESTIC ANIMALS

### CAUTION

Avoid contact with skin, eyes or clothing. Wash thoroughly with soap and water after handling.

#### FIRST AID

**Note to Physician:** Contains petroleum distillates. May pose an aspiration pneumonia hazard. Have the product container or label with you when calling a poison control center or going for treatment. You may also contact 1-800-255-3924 (CHEM-TEL, INC.) for emergency medical treatment information.

#### PHYSICAL & CHEMICAL HAZARDS

Do not use or store near heat or open flame. Do not use this product in or on electrical equipment due to the possibility of shock hazard.

EPA Reg. No. 39039-13 EPA Est. No. 39578-TX-1  
Manufactured for: Turtle's Horse Care Division  
Y-TEX Corp., 1825 Big Horn Ave. Cody, WY 82414

Page 1

#### ENVIRONMENTAL HAZARDS

Do not apply directly to water.

#### STORAGE AND DISPOSAL

Do not contaminate water, food or feed by storage or disposal.

**Pesticide Storage and Spill Procedures:** Store upright at room temperature. Avoid exposure to extreme temperatures. In case of spill or leakage, soak up with an absorbent material such as sand, sawdust, earth, fuller's earth, etc. Dispose of with chemical waste.

**Disposal:**  
If **empty:** Do not reuse this container. Place in trash or offer for recycling if available.  
If **Partly Filled:** Call your local solid waste agency for disposal instructions. Never place unused product down any indoor or outdoor drain.

#### READ ENTIRE LABEL BEFORE EACH USE

#### DIRECTIONS FOR USE

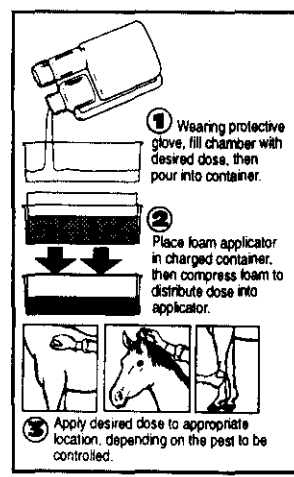
It is a violation of Federal law to use this product in a manner inconsistent with its labeling. For dirty horses, shampoo, rinse and allow to dry thoroughly. Wear protective glove provided. Shake well before using. **Do not treat foals under 12 weeks of age.**

For control of mosquitoes, black flies, face flies, lice & ticks. Aids in control of stable flies, deer flies, house flies, bot flies and eye gnats.	Apply once every 7 days as a whole body wipe with foam applicator to horses and ponies at the Max. Rate of 6 ml per 200 lbs. body weight to a Max. Dose of 30 ml. per animal.
--	---

FOR IMPROVED RESULTS AGAINST SPECIFIC PESTS SEE INSIDE BOOKLET FOR MORE DETAILED DIRECTIONS AND PRECAUTIONARY STATEMENTS.

Page 2

Page 3



To apply EQUANIMITY to foam applicator, loosen cap over measuring chamber only and hold bottle upright.

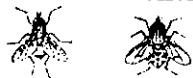
- ① While wearing a protective glove, squeeze bottle to fill chamber with required dosage. Remove that cap and pour dose into the plastic container provided.
- ② Place the foam applicator (gray side down) into the container. Place the applicator and container on a firm surface and press down on the applicator to distribute the product evenly throughout the gray foam.
- ③ Apply the product to the horse in the desired location on its body. Do not exceed Max. Rate of 6 ml/200 lbs. body wt. per horse per week or Max. Dose of 30 ml. per horse per week. Replace the foam applicator into the container when finished.

Page 4

Page 5



**HOUSE FLY AND STABLE FLY**



**House flies** do not bite but cause annoyance by persistent feeding around the eyes, muzzle and wounds.

**Stable flies** are very aggressive blood feeding flies with a painful bite. They feed primarily on the lower legs and sometimes the flanks. Horses seen frequently stomping their feet are usually being attacked by stable flies.

**Both house flies and stable flies** breed in decaying organic matter. House flies will breed in any matter with greater than 40% moisture. Stable flies prefer a mixture of manure and vegetation of similar moisture content.

**APPLICATION OF EQUANIMITY**

**House flies:** apply 1 ml/200 lbs. body weight once every 3-4 days to the face being careful to avoid getting in the eyes.

**Stable flies:** apply 3 ml/200 lbs. body wt. once every 3-4 days to the legs, belly and chest.

**Additional Strategies to Aid in Control of the House Fly and Stable Fly**

Eliminating as many breeding sites as possible is important. Remove manure, bedding and other organic matter at least every 3 to 4 days. Release of parasitic wasps that attack the pupal stage can be beneficial.

Page 6

Page 7

**FACE FLY AND HORN FLY**



**Face flies** do not bite but feed like house flies around the eyes, muzzle and wounds. They are similar in size and appearance. Their feeding is more irritating than that of the house fly thus causing greater annoyance.

**Horn flies** are blood feeding flies, taking several blood meals a day. They are about half the size of a house fly and are usually found in clusters on the body of the horse.

**Both face flies and horn flies** breed in fresh, undisturbed cattle manure pats primarily on pastures.

**APPLICATION OF EQUANIMITY**

**Face flies:** apply 1 ml/200 lbs. body wt. once every 3-4 days to the face being careful to avoid getting it in the eyes.

**Horn flies:** apply 6 ml/200 lbs body wt. once every 7 days as a whole body wipe. For horn flies only, apply 30 ml as pour-on over the withers once every 2 weeks. Do not ride for 24 hrs.

**Additional Strategies to Aid in Control of the Face Fly and Horn Fly**

See your local county Cooperative Extension Service agent for assistance.

Page 8

Page 9

**HORSE FLY AND DEER FLY**



**Horse flies** are large, aggressive, blood feeding flies with a very painful bite. They feed primarily on the neck, back and rump but will bite horses anywhere, including the legs.

**Deer flies** are generally much smaller than horse flies but similar in appearance. They too are aggressive blood feeders with a painful bite. They feed primarily on the head and ears but will bite horses anywhere, including under the flanks. **Both horse flies and deer flies** breed in wet bottom lands and wooded areas. Horse flies and deer flies have been implicated as the primary vectors for equine infectious anemia.

**APPLICATION OF EQUANIMITY**

**For both horse flies and deer flies:** apply 3 ml/200 lbs. body wt. once every 3-4 days over the whole body paying particular attention to where the flies are biting. Some species prefer to feed on certain areas of the body.

**Additional Strategies to Aid in Control of the Horse Fly and Deer Fly**

Horse flies and deer flies are some of the most difficult pests of horses to control. Mechanical traps are available to reduce adult populations. Neither horse flies nor deer flies come inside buildings so providing covered shelter can supply some relief during high populations of these pests.

Page 10

Page 11

10/12

**HORSE BOT FLIES**



Horse bot flies are the adult stages of three species of stomach bots, which are serious internal parasites of horses. The common bot fly is the most prevalent throughout the U.S. Its appearance is similar to that of a honey bee. It lays its light yellow eggs on the forelegs, belly, flanks and shoulders of horses. After incubation period of 7-10 days the eggs hatch when licked by the horse. The larvae are picked up on the tongue. The larvae attach to the stomach lining where they over winter and are passed out in the feces the following spring or summer to start the life cycle over.

**APPLICATION OF EQUANIMITY**  
Common bot flies: apply 3 ml/200 lbs. body wt. once every 3-4 days to the legs, chest, belly and flanks.

**Additional Strategies to Aid in Control of Horse Bot Flies**  
After the first killing frost horses should be given a broad-spectrum boticide and anthelmintic for control of all internal parasites.

Page 12

Page 13

**MOSQUITOES**



Several species of mosquitoes will feed on horses. Their feed activity is greatest in the late evening and early morning, although they are active throughout the night. They may transmit equine encephalitis (sleeping sickness) and West Nile virus.  
Mosquitoes breed in standing water. Old automobile tires, cans, or any container that holds water can breed large numbers of mosquitoes. Larger bodies of standing water such as swamps, lagoons, ponds and back water of lakes can breed large numbers of mosquitoes. Adults rest in tall vegetation near feeding and breeding sites.

**APPLICATION OF EQUANIMITY**  
Mosquitoes: apply 6 ml/200 lbs. body wt. once every 7 days as a whole body wipe. For improved control, apply 3 ml/200 lbs. body wt. once every 3-4 days as a whole body wipe.

**Additional Strategies to Aid in Control of Mosquitoes**  
Removal of all objects that could hold stagnant water is critical to reducing adult populations. Removal of tall grass and weeds near horse barns and pastures can help reduce adult populations. Adult mosquitoes are attracted to lights at night so turn lights off in barns and stables. Installing lights away from buildings instead of over doorways will help attract mosquitoes away from buildings.

Page 14

Page 15

**BLACK FLIES AND EYE GNATS**



Black flies are small blood feeding flies that feed in the ears, under the neck and along the midline of the belly, depending on the species. During high populations the ears can become sore and irritated. Black flies can produce large sores on the chest and midline of the belly, cause bite reactions to their saliva and they transmit the microfilaria of Onchocerca nematodes.  
Eye gnats are small flies that feed around the corners of the eye.

**APPLICATION OF EQUANIMITY**  
Black flies: apply 6 ml/200 lbs. body wt. once every 7 days to inside surface of the ears, throat area and midline of the belly. For improved results apply 3 ml/200 lbs. body wt. once every 3-4 days.  
Eye gnats: apply 1 ml/200 lbs. body wt. once every 3-4 days around the eye being careful not to get product in the eye.

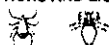
**Additional Strategies to Aid in Control of Black Flies and Eye Gnats**  
See your local county Cooperative Extension Service agent for assistance.

Page 16

Page 17

11/12

### TICKS AND LICE



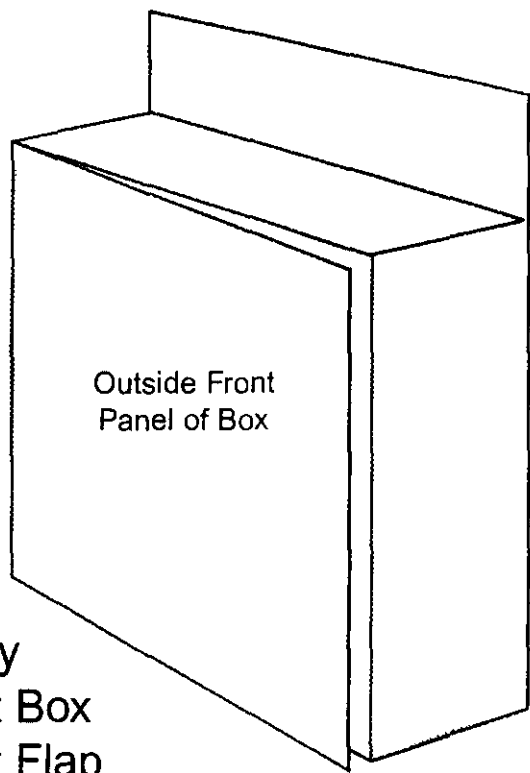
Ticks are blood sucking arthropods that may transmit diseases such as Lyme disease. The adult stages have eight legs. There are several different species inhabiting a variety of habitats. The species that are the most problem to horses are those that live in woodland habitats. Ticks have four life stages: egg, larvae (seed ticks), nymphs (yearlings) and adult. The seed ticks are frequently found in large clusters of several thousand. Nymphs and adults are usually found individually. Lice are either sucking (blood feeding) or chewing (non-blood feeding). They are transmitted by direct contact with infested animals.

**APPLICATION OF EQUANIMITY Ticks and Lice:** apply 6 ml/200 lbs. body wt. once every 7 days as a whole body wipe, paying particular attention to those areas of the body that are most heavily infested. Depending on the species, that may be between the front and hind legs, in the mane and tail, or in the ears for some species of ticks. Lice should be eliminated by 3 weekly treatments.

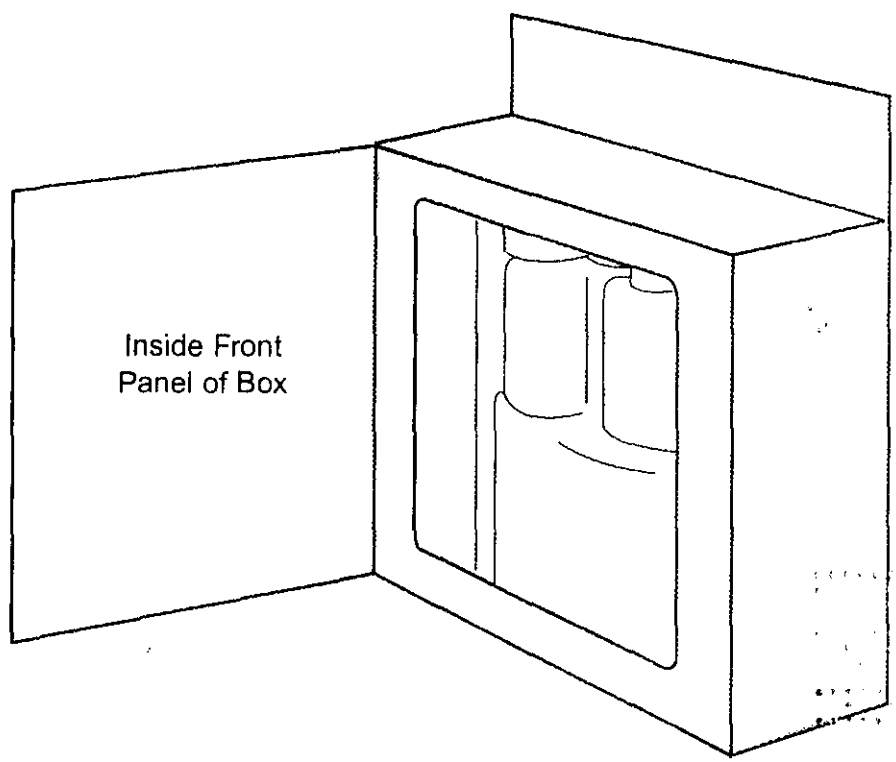
**Additional Strategies to Aid in Control of Ticks and Lice**  
Keeping horses out of tick habitat and/or tick habitat reduction can help reduce you and your horses' exposure to ticks. Fence horses out of wooded areas. Keep fence-rows and other areas of the pasture clear of tall grass, weeds and brush. To protect your horse from lice, prevent contact with infested horses and examine all new horses for infestation.

#### NOTICE OF WARRANTY

Y-TEX Corporation makes no warranty of merchant-ability, fitness for any purpose, or otherwise, expressed or implied concerning this product or its uses which extend beyond the use of the product under normal conditions in accord with the statements made on this label, and in any case, is limited to replacement of product only.



Equanimity  
Insecticide Kit Box  
Showing Front Flap  
Partially Open



Equanimity Insecticide Kit Box  
Showing Front Flap Fully Open