

# METAFINA BRAND COPPER SULPHATE PENTAHYDRATE

## Active Ingredient

Copper Sulphate Pentahydrate 99%

Inert Ingredient 1%

100%

Copper expressed as metallic 25.2%

For control of algae such as diatoms, dinoflagellates, blue-green, golden, grass-green in impounded waters, lakes, ponds, irrigation reservoirs, irrigation canals.

**KEEP OUT OF REACH OF CHILDREN**

# DANGER

**HAZARDOUS TO HUMANS AND DOMESTIC ANIMALS**

**CORROSIVE:** Causes eye damage. Do not get into eyes. Wear goggles or face shield when handling. May be harmful or fatal if swallowed. Avoid contamination of food.

**FIRST AID:** In case of contact, immediately flush eyes or skin with plenty of water for at least 15 minutes. For eyes, call a physician. Remove and wash contaminated clothing before re-use.

If swallowed, promptly drink a large quantity of milk, egg whites or gelatin solution; if these are not available, drink large quantities of water. Avoid alcohol. Call a physician immediately.

**NOTE TO PHYSICIAN:** Probable mucosal damage may contraindicate the use of gastric lavage. Measures against circulatory shock, respiratory depression and convulsion may be needed.

**ENVIRONMENTAL HAZARDS:** Trout and certain other species of fish may be killed at application rates recommended on this label, especially in soft or acid waters. However, fish toxicity generally decreases when the hardness of the water increases. Consult your State Fish and Game Agencies before applying this product especially in public waters.

## DIRECTIONS FOR USE:

It is a violation of Federal law to use this product in a manner inconsistent with its label.  
This product is formulated for application by ground or aerial equipment.

### I. FOR THE CONTROL OF ALGAE IN STILL WATERS

Apply 10-15 lbs. of Metafina copper sulphate for each surface acre, broadcasting the granules evenly over the area to be treated. Lower dosages are effective early in the season when the vegetation is young and actively growing; higher dosages (15 lbs. per acre) are required as the season continues and vegetation becomes stronger and more resistant. In shallow water, under 2 feet deep, do not exceed 15 lbs. per acre.

**CORROSIVE:** Causes eye damage. Do not get into eyes. Wear goggles or face shield when handling. May be harmful or fatal if swallowed. Avoid contamination of food.

**FIRST AID:** In case of contact, immediately flush eyes or skin with plenty of water for at least 15 minutes. For eyes, call a physician. Remove and wash contaminated clothing before re-use.

If swallowed, promptly drink a large quantity of milk, egg whites or gelatin solution; if these are not available, drink large quantities of water. Avoid alcohol. Call a physician immediately.

**NOTE TO PHYSICIAN:** Probable mucosal damage may contraindicate the use of gastric lavage. Measures against circulatory shock, respiratory depression and convulsion may be needed.

**ENVIRONMENTAL HAZARDS:** Trout and certain other species of fish may be killed at application rates recommended on this label, especially in soft or acid waters. However, fish toxicity generally decreases when the hardness of the water increases. Consult your State Fish and Game Agencies before applying this product especially in public waters.

## DIRECTIONS FOR USE:

It is a violation of Federal law to use this product in a manner inconsistent with its label.  
This product is formulated for application by ground or equipment.

### I. FOR THE CONTROL OF ALGAE IN STILL WATERS

Apply 10-15 lbs. of Metafina copper sulphate for each surface acre, broadcasting the granules evenly over the area to be treated. Lower dosages are effective early in the season when the vegetation is young and actively growing; higher dosages (15 lbs. per acre) are required as the season continues and vegetation becomes stronger and more resistant. In shallow water, under 2 feet deep, do not exceed 15 lbs. per acre.

### II. FOR THE CONTROL OF ALGAE IN FLOWING WATERS

Apply 1 lb. of Metafina copper sulphate per cubic foot/second (CFS) flow. A CFS is equivalent to 450 gallons per minute. Place material in a burlap bag and suspend it in the waterflow at a turbulent or high flow position to obtain good dispersion through the waterflow. This treatment is usually required every 10 to 14 days during the warm season.

### III. STANDARD CONDITIONS

When temperature is at 60 F, pH is 7, hardness is 100 mg. per litre as CaCO<sub>3</sub> and no organic materials are present:

Corrections to standard conditions are as follows:

Temperature	60 F	51 F	42 F	32 F	
Increase application	0	12%	25%	37%	
Alkalinity as mg/l of CaCO <sub>3</sub> above pH 7	0	20	40	60	80
Increase application	0	10%	20%	30%	40%
Hardness as mg/l of CaCO <sub>3</sub>	50	100	150	200	
Vary application	-50%	0	+200%	+300%	
Organic material as mg/l	0	50	100	150	200
Increase application	0	10%	20%	30%	40%

### IV. FISH CAUTION

Treatment of algae can result in oxygen loss from decomposition of dead algae. This loss can cause fish suffocation. Therefore to minimize this hazard treat 1/3 to 1/2 of the water area in a single operation and wait 10 to 14 days between treatments. Begin treatments along the shore and proceed outwards in bands to allow fish to move into untreated waters.

**NOTE:** If treated water is to be used as a source of potable water the metallic copper residual must not exceed 1 ppm (4 ppm copper sulphate pentahydrate).

### V. STORAGE AND DISPOSAL

Avoid storage near food or feed products. Do not re-use empty containers. Open burning or dumping is prohibited. Copper sulphate or rinsate that is not used should be disposed of safely, in accordance with procedures approved by federal, state and local authorities.

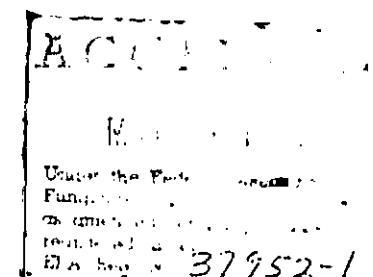
**WARRANTY:** Our guarantee is limited to the terms of this label, and subject thereto the buyer assumes any risk to persons or property arising out of use or handling and accepts the products on these conditions.

MANUFACTURED BY CANADIAN METAFINA CHEMICALS LIMITED  
New Westminster, B.C., Canada

Establishment No. 37952-CN-1

EPA Registration No. 37952-1

**NET CONTENTS 50 LBS.**



30 R-11-2

30

APRIL 5, 1979