

ETHY-GEN® CONCENTRATE

ONLY FOR USE WITH CATALYTIC GENERATOR
TO PRODUCE ETHYLENE GAS TO ACCELERATE
RIPENING OF:

Avocados, Bananas, Citrus Fruit, Melons, Papayas,
Pears, Tomatoes and Tobacco

ACTIVE INGREDIENT

Ethanol 86%
INERT INGREDIENT 14%
TOTAL 100%

NO WATER ADDED
CONTAINS METHANOL
not to be taken internally

KEEP OUT OF REACH OF CHILDREN
DANGER—POISON



STATEMENT OF PRACTICAL TREATMENT

Methanol may cause blindness. Harmful or fatal if
swallowed. Vapor harmful. Avoid breathing spray
mist or vapors. Avoid contact with skin. Do not get in
eyes.

IF SWALLOWED: Induce vomiting by touching the
back of the throat with finger or blunt object. Get
medical attention immediately.

IF IN EYES: Flush with water for at least 15
minutes. Get medical attention immediately. See
side panel for additional Precautionary Statements.

Mfg. By CATALYTIC GENERATORS, INC.

1185 Pinetridge Road

Norfolk, VA 23502

(804) 855-0191

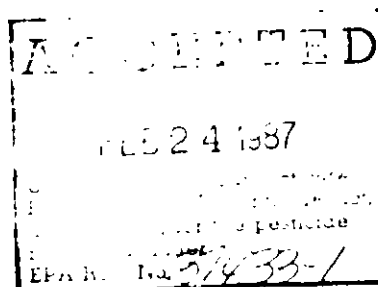
Establishment No. 37433 VA 1

E.P.A. Reg. No. 37433-1

Net Contents: 32 Ounces—One (1) U.S. Quart

U.S. Patent No. 4,400,231

Other Patents Pending



D
O
N
O
T
R
E
U
S
E
C
O
N
T
A
I
N
E
R

BEST AVAILABLE COPY

FLAMMABLE

Keep away from heat and flame

STORAGE AND DISPOSAL

Do not contaminate water, food, or feed by storage or
disposal.

STORAGE—Store in dry, locked storage area, at tempera-
tures below 125° F.

CONTAINER DISPOSAL—Triple rinse (or equivalent).
Then offer for recycling or reconditioning, or puncture and
dispose of in a sanitary landfill, or incineration, or if allowed
by state and local authorities, by burning. If burned, stay out
of smoke.

RIPENING ROOMS

Avocados, Bananas, Citrus Fruit, Melons, Papayas, Pears
and Tomatoes

Use in the first 24 hours of ripening period. One quart used
as directed in 4,000 to 8,000 cubic feet ripening room
produces ethylene concentrations varying from 20 to 1,200
P.P.M. over a period of 16 hours.

One (1) pint used as directed in 1,000 to 4,000 cubic feet
ripening room produces ethylene concentrations varying
from 20 to 500 P.P.M. over a period of 8 hours.

TOBACCO (FLUE-CURED)

Use immediately after filling barn.

Two (2) quarts used as directed in 1,500 to 2,500 cubic feet
curing barn produces ethylene concentrations varying from
15 to 300 P.P.M. over a period of 12 hours.

Use additional 2 quarts of Ethy-Gen® as required.

USE PRECAUTIONS

**Anyone using this product in any other type barn or
room size should contact us prior to use.**

The ripening room or curing barn should be reasonably air-
tight; all vents and doors closed; cracks or holes in walls
and doors should be repaired or caulked before use.

WARRANTY

Seller's liability for breach of warranty, express or implied,
in connection with this product shall be limited to repairs or
replacement at seller's expense of the
defective product, and in no case shall seller be liable for
incidental or consequential damages.

IMPORTANT NOTICE

Use of any other product other than ETHY-GEN CONCENTRATE
may damage the catalyst in the generator. Also, use of other
products in the generator may produce harmful by-products.