

**WATER
FILTER**

Counter Top Backwashable Water Filter
Model 1000/1000A

**CAUTION: KEEP OUT OF
REACH OF CHILDREN**

Refer to instructions furnished with
unit for proper use

DISPOSAL When contents are exhausted
wrap in newspaper and discard with trash

ACTIVE INGREDIENTS Silver 0.624%

INERT INGREDIENTS 99.376%

*No other metal silver compounds listed below

EPA Registration No. 37370-12
EPA Establishment No. 37370 CA 01

ADVANCED FILTRATION TECHNOLOGY
2424 Santa Arroyo Colorado CO 80520

NET CONTENT One GALLON WATER

ACCEPTED

NOV 02 1983

U.S. DEPARTMENT OF AGRICULTURE
Pesticide and Plant Quarantine
An Agency of the U.S. Department of Agriculture
Registered under
EPA Reg. No. 37370-12

BEST DOCUMENT AVAILABLE

OPERATION.

Water pressure alone operates the WATER WASHER. No electricity is required.

The selector switch allows you to prolong the life of your filter as you can bypass the filter to use unfiltered tap water when appropriate.

When the selector button is pushed to the left, your tap water is diverted through one of the hoses into the top of the filtration unit which has a magnifying lens so you can observe the condition of the filter.

The water flows down through the replaceable WATER WASHER filter and returns to the selector switch via the return hose.

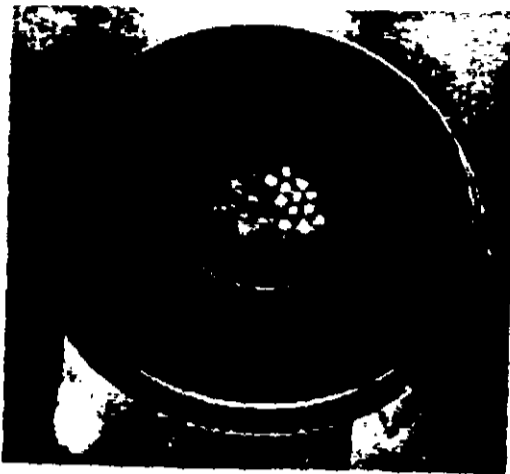
Water washer can be used in conjunction with any standard water faucet.

SUPERB FILTRATION.

The WATER WASHER reduces the rate of flow to give the water greater contact with the activated charcoal within the filter. As a result, you receive cleaner water. The rate of filtered water is approximately 1/2 gallon per minute. The WATER WASHER is designed to be used with a standard water faucet.

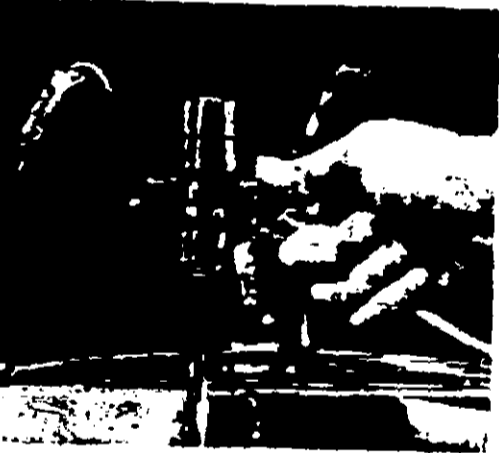
FILTER REPLACEMENT

The WATER WASHER filter is designed for easy replacement. Simply push the selector button to the right to bypass the filter. Then, turn the selector button to the left to observe the filter. When the filter is dirty, simply push the selector button to the right to bypass the filter. Then, turn the selector button to the left to observe the filter. When the filter is dirty, simply push the selector button to the right to bypass the filter. Then, turn the selector button to the left to observe the filter.



FLOW SENSORS.

You will see a number of spherical white flow sensors through the magnifying lens. These allow you to visually determine the rate of flow through the WATER WASHER.



PUSH BUTTON FOUNTAIN.

The WATER WASHER is designed to be used with a standard water faucet. The push button fountain allows you to easily operate the device.

ELSTON WATER FILTERS

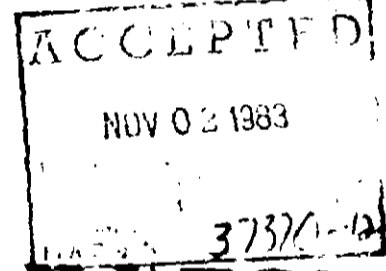
WATER WASHER

COUNTERTOP
BACTERIOSTATIC
WATER FILTER

Model 1000 (chrome)
Model 1000 A (almond)

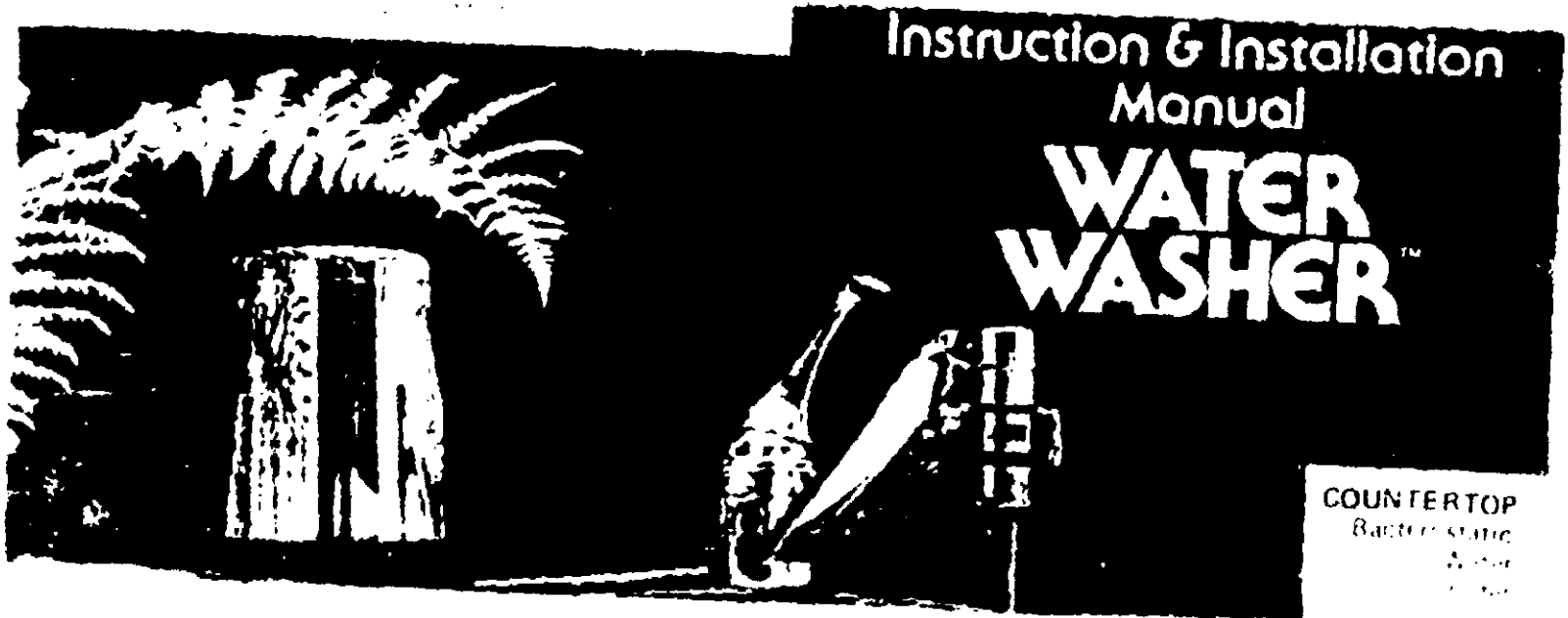
EPA REGISTRATION NUMBER
37370-12

EPA ESTABLISHMENT NUMBER
17370 CA 01



WATER WASHER

ADVANCED FILTRATION TECHNOLOGY
2424 Bates Avenue
MORFORD, CALIFORNIA 95275
415-826-8116



Instruction & Installation
Manual

WATER WASHER™

COUNTERTOP
Rackless Static
Water
Washer

WATER WASHER™

COUNTERTOP • BACTERIOSTATIC WATER FILTER • MODEL 1000/1000A

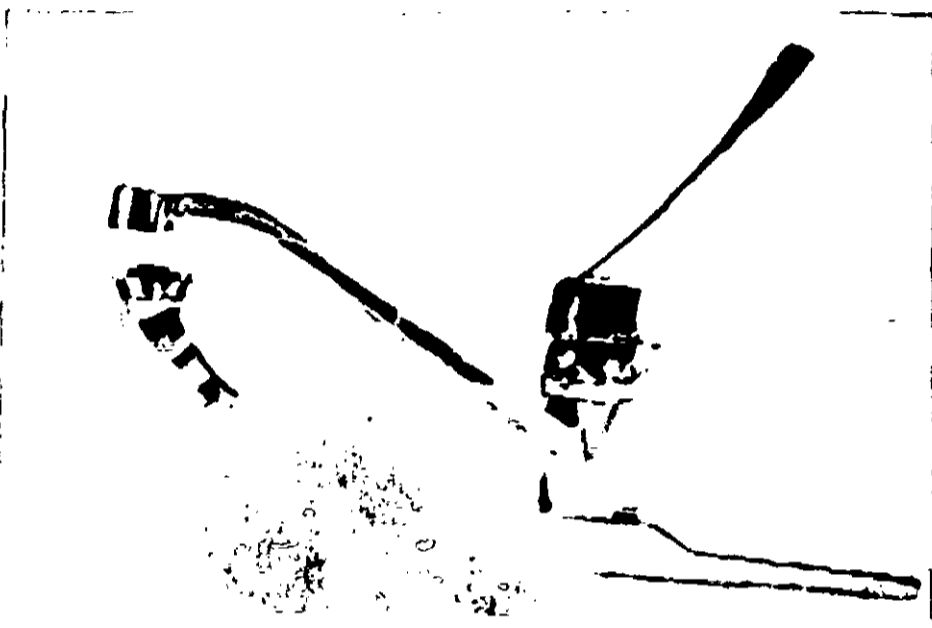
GENERAL CLASSIFICATION

It is a violation of Federal Law to use this product in a manner inconsistent with its labeling.

CAUTION: Do not use this product with your countertop WATER WASHER from another manufacturer. The WATER WASHER is designed to work only with the WATER WASHER filter.

STEP ONE

Unscrew the aerator from your faucet. If an external thread is shown, you can screw the selector assembly onto the faucet without an adaptor. Otherwise, select the correct adaptor from the parts kit packaged inside the canister and screw it into the faucet with the proper washer in place as shown. Then you may connect the selector assembly. If you have a non-standard faucet, visit a hardware store for the appropriate adaptor or send us your faucet with a \$1.00 shipping charge and we will select the correct adaptor for you.



STEP TWO

Remove the cap from the top of the WATER WASHER canister. The cap is located inside the canister. The cap is used to seal the canister when it is not in use. The cap is also used to hold the canister in place when it is being used. The cap is made of plastic and is designed to fit snugly over the top of the canister. The cap is also used to hold the canister in place when it is being used. The cap is made of plastic and is designed to fit snugly over the top of the canister.



STEP THREE

Place the WATER WASHER canister on the countertop. The canister is designed to sit on a flat surface. The canister is made of plastic and is designed to fit snugly over the top of the faucet. The canister is also used to hold the canister in place when it is being used. The canister is made of plastic and is designed to fit snugly over the top of the faucet.

