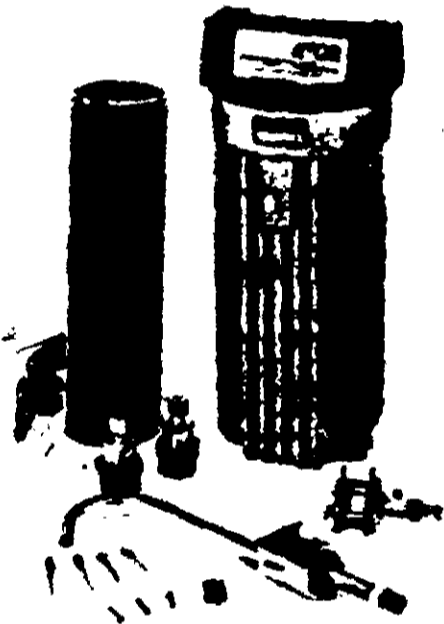


<p>Under-The-Sink UTS SILVERATOR WATER TREATMENT UNIT</p> <p>INSTALLATION AND OPERATING MANUAL</p> <p>310 203 4700</p>	
--	---

ACCEPTED
 NOV 02 1983
 Received for the Department of Environmental Protection pursuant to the Resource Conservation and Recovery Act, authorized under EPA Reg. No. 37370-8

BEST DOCUMENT AVAILABLE

GENERAL CLASSIFICATION

It is a violation of Federal Law to use this product in a manner inconsistent with its labeling.

GENERAL

Your SILVERATOR model UTS, when installed properly, is designed to give you up to 7 gallons of clear, good tasting water for drinking and cooking daily for two years. A primary consideration is its location, which should be in an area where the air temperature never drops below freezing. Also please check your water temperature and pressure.

Water temperature should not exceed 85° F

Water pressure should not exceed 125 psi (pounds per square inch)

Flow rate should be minimum 1 gallon per minute.

This unit is primarily designed to treat municipal tap water in the home. However, it may also be installed in a boat, cabin, camper or trailer when water is contained in a reservoir prior to usage. When treating water, other than regular municipal water, or when there is any reason to suspect bacterial contamination, pre-treatment of the water is necessary to render the water potable. The reason for this is that it is impossible to visually determine the degree of bacterial contamination. Water that looks good and is clear may still contain a large quantity of disease causing bacteria. Therefore, the water must be pre-treated as indicated before it is treated through the Silverator Unit.

NOTE: For installation in boat, cabin, camper or trailer, please see instructions.

BEFORE YOU BEGIN

This manual is to facilitate the installation of your SILVERATOR Model UTS Unit. Please read carefully before proceeding to avoid unnecessary complications, delay or damage to equipment and to the water line. The identifying components are shown in Figure 1. Please match each item to the checklist provided to insure a complete parts package.

NOTE: Due to variation in local codes, it is possible that you may have to use a Union, T and solder tubing instead of a soft fitting, etc. to meet the local code.

BEST DOCUMENT AVAILABLE

SILVERATOR UNIT COMPONENTS

a checklist

- 1. UTS SILVERATOR Unit
- 2. UTS SILVERATOR Head
- 3. UTS SILVERATOR Cartridge
- 4. SILVERATOR Water Spout
- 5. Polypropelene tubing
- 6. Self tapping needle valve
- 7. Tubing adapters, reducers
- 8. Chrome mounting bracket and mounting screws



FIGURE 1

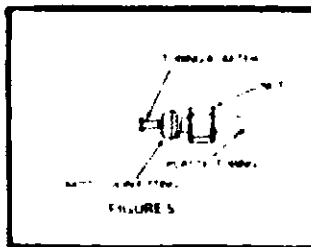
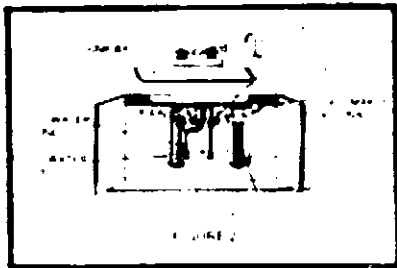
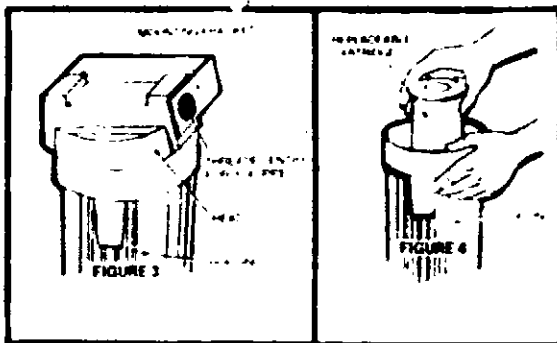
BEST DOCUMENT AVAILABLE

INSTALLATION INSTRUCTIONS

1. Use center punch to mark position for hole drilling (Note: do not attempt to drill through pipes).
2. Drill a 7/16" hole, avoiding pipes or obstructions under the sink. See Figure 2.
3. Install the SILVERATOR SPOUT with washer, lock washer, and nut.
4. Fit the SILVERATOR Model UTS unit under the sink, allowing 3" clearance above and below the unit for access. Align the chrome mounting bracket and fasten with the screws provided.
5. Cut the plastic tubing to size and insert nuts and fittings as shown in Figure 5.
6. Connect plastic tubing as shown in Figure 2.
7. Install the saddle valve (or Union T) on the cold water line. See the instructions on the saddle valve package for making connections.
8. Check all tubes and connections for leaks and tightness, then push the Spout lever up to start water flow. Let water run for 15 minutes to activate the UTS unit and remove any charcoal dust. The Spout lever permits continuous flow in the UP position or demand flow when depressed. You can now enjoy treated water as you require.

BEST DOCUMENT AVAILABLE

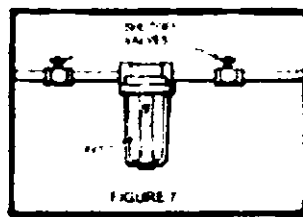
9. To replace the SILVERATOR cartridge element, first shut off the water supply. Unscrew the housing counterclockwise from the cap, taking care not to spill any water. Empty the housing into the sink, and remove the used SILVERATOR cartridge. Replace with a new cartridge, and replace the housing in the cap. Turn on the water supply. Allow the water to run from the Spout for about 15 minutes to activate the new SILVERATOR cartridge.



BEST DOCUMENT AVAILABLE

BOAT, CABIN, CAMPER, TRAILER INSTALLATION

1. Shut off water supply at the source
2. Drain the unit to relieve the water pressure
3. For installation of the SILVERATOR Spout, follow the procedure described. This is a parallel connection, diverting only part of the water supply.
4. For direct connection to the existing faucet, connect the UTS unit right in the water line as shown in Figure 7. In this case the plastic tubing adapters, Spout and saddle valve will not be used.
5. Position the UTS unit to clear at least 3" above and below the unit for easy access. Align the chrome mounting bracket accordingly, then affix with the screws provided.
6. Prepare the pipe or adapter threads with teflon tape or sealant and insert through the mounting bracket holes into the UTS head. See Figure 3.
7. Reopen the water supply line
8. Check for leaks, and let water run for 15 minutes to activate the SILVERATOR cartridge and remove chlorine dust.



BEST DOCUMENT AVAILABLE

TROUBLESHOOTING

The UTS unit is designed to operate with no maintenance after installation except for replacement of the SILVERATOR cartridge. The following guide shows how to cope with problems that might occur.

PROBLEM

A Leakage around the UTS head

SOLUTION

Perform reseal procedure

- 1 Shut off all incoming water lines
- 2 Remove O-ring seal from head, clean surfaces
- 3 Apply thin layer of vaseline and reassemble

B Charcoal dust in water

This is a result of installing the cartridge, and indicates activation of the cartridge. This will continue for about 15 minutes of steady water flow.

C Flow rate decreases

The SILVERATOR cartridge is clogged with suspended solids in the water, requiring replacement.

BEST DOCUMENT AVAILABLE

GUARANTEED PERFORMANCE

SILVERATOR UTS housings meet the Water Conditioning Foundation standards of 300 psi hydrostatic leak test and 500 psi minimum ultimate burst pressure based on the rated operating pressure of 125 psi. Maximum rated operating temperature is 125°F. Housings have also passed the cyclic pressure test designed to simulate line hammer of 250 0.1 cycles from zero to 150 psi line pressure at a rate of 12 to 20 cycles per minute without failure of the housing.

REPLACEMENT OF THE SILVERATOR CARTRIDGE

The life of your SILVERATOR cartridge will depend on the quality of the water you are using. Suspended solids such as sediment, rust, and dirt will tend to clog the filtering element and restrict water flow. This will be your indication that the SILVERATOR element needs replacing. See instruction no. 11 in the Under sink Installation Instructions.

Depending on the amount of suspended particles in your water supply, you can expect your UTS unit to produce from 2000 to 5000 gallons of treated water each year. Our recommendation is to replace the cartridge annually based upon an average family's drinking and cooking requirements. Replace it oftener if you feel your consumption might be higher due to a larger family, or an increased need for specialized uses of your treated water.

You will want to make a permanent note of the installation and cartridge replacement dates, perhaps on the unit itself.

BEST DOCUMENT AVAILABLE

SUGGESTED APPLICATIONS FOR UTS SILVERATOR WATER TREATMENT UNITS

OPTIONAL BY-PASS

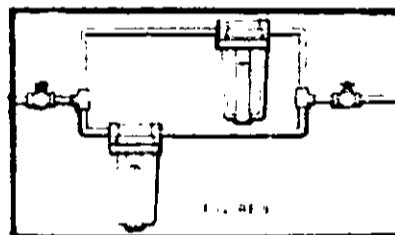
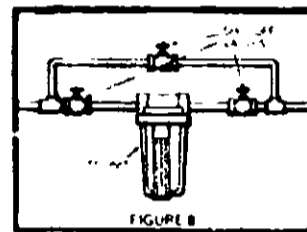
If it is important to avoid shutoff of the entire water supply for cartridge replacement, a by pass and valve should be installed as shown in Figure 8. This permits water use even while changing the cartridge. Note the position of the shutoff valves.

PARALLEL UNITS

For high volume water usage in large homes. See Figure 9.

SPECIAL INSTRUCTIONS

An easy and simple way to pre-treat water in the reservoir tank of your boat, cabin, camper or trailer for drinking is with ordinary household 5.25% Sodium Hypochlorite. Add one tablespoon of Sodium Hypochlorite for each ten gallons of water to be treated. Mix thoroughly and allow to stand 30 minutes before using a suitable test kit to determine that at least 0.2 ppm available chlorine is present in the water. The UTS SILVERATOR Water Treatment Unit further processes the water by removing the chlorine and absorbing undesirable color, odor, taste, suspended solids, dirt, rust, and silt.



BEST DOCUMENT AVAILABLE

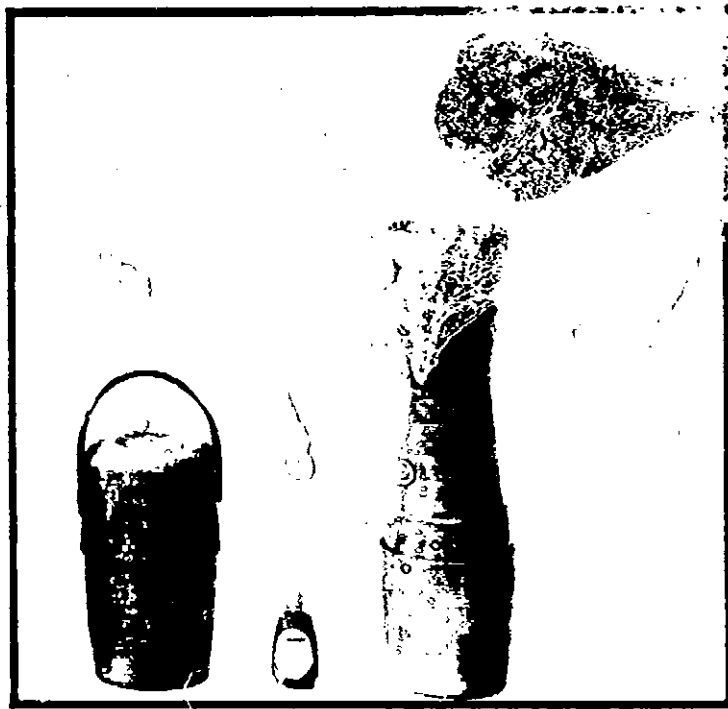


FIGURE 10

BEST DOCUMENT AVAILABLE



OTHER SILVERATOR PRODUCTS

MINISILVERATOR Portable Water Treatment System, see figure 10, consisting of the miniSILVERATOR Water Treatment Unit and the miniBOOSTER is designed to treat water encountered in your travels, foreign and domestic, when used as directed.
The miniSILVERATOR is rechargeable.

miniSILVERATOR Water Treatment EPA Registration No. 37370-2
miniBOOSTER EPA Registration No. 37370-4
miniSILVERATOR Recharge EPA Registration No. 37370-6
EPA Establishment No. 37270-CA 01

ACCEPTED
NOV 02 1983
Under the Federal Insecticide, Fungicide, and Rodenticide Act, as amended, for the pesticide registered under EPA Reg. No. 37370-8

WRITE FOR OUR FULL CATALOGUE OF WATER PRODUCTS

BEST DOCUMENT AVAILABLE

ADVANCED FILTRATION TECHNOLOGY

2424 Bates Avenue
CONCORD, CALIFORNIA 94520
(415) 825-9119

SPECIALISTS IN SILVER/CARBON FILTRATION UNITS

BEST DOCUMENT AVAILABLE

EPA Registration No 37370-8
EPA Establishment No 37370-CA-01
NET CONTENT: One UTS SILVERATOR Water Treatment Unit

ADVANCED FILTRATION TECHNOLOGY
224 Main Avenue
CONCORD, CALIF. 94520
(415) 822-9119

UTS SILVERATOR Water Treatment Unit
CAUTION: KEEP OUT OF REACH OF CHILDREN
ACTIVE INGREDIENT: Silver
INERT INGREDIENTS: See label for details
EPA Reg. No. 37370-8
EPA Est. No. 37370-CA-01

NOV 02 1983
EPA Reg. No. 37370-8