

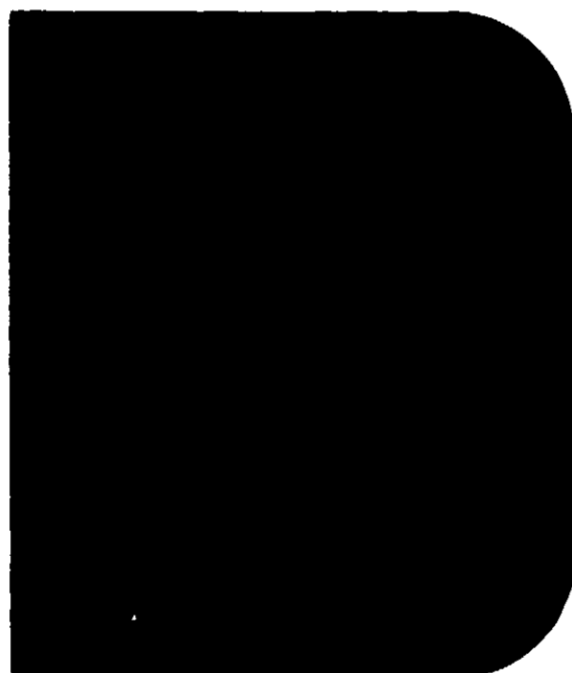
RED DEVIL[®]

POLYURETHANE

Stain and Wood PRESERVATIVE

**KEEPS
WATER OUT
RETARDS
ROT & MILDEW**

THIS CAN CONTAINS
#404 Chestnut Brown
EPA Reg. No. 37291-1



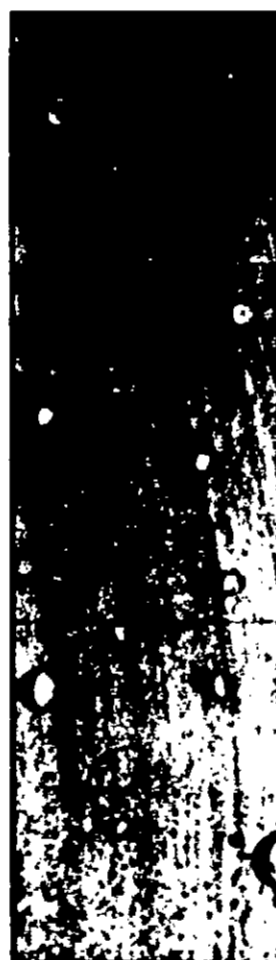
Exceeds water repellancy requirements
of Fed Spec TT-W-572b. 37

WARNING:
KEEP OUT OF REACH OF CHILDREN.
SEE PRECAUTIONS
STATEMENTS ON LABEL.
EPA Reg. No. 37291-NY-1

ACTIVE INGREDIENTS:	
Bis (Tributyltin) Oxide	0.3%
INERT INGREDIENTS:	99.7%
	100.0%

NET ONE GALLON LIQUID

AVAILABLE IN THESE COLORS



406
CEDAR GRAY



409
TEAKWOOD



410
MAHOGANY



RED DEVIL[®]

POLYURETHANE

Stain and Wood PRESERVATIVE

WHAT IT IS: Red Devil Stain and Wood Preservative is made on a urethane base which combines durable lightfast pigments with a highly effective fungicide and water repellent.

WHAT IT DOES: Protects and beautifies wood. Helps keep wood safe from rot, mildew discoloration, warping and swelling.

HOW TO USE: Stir can thoroughly before using and occasionally during use. Apply on clean, dry unprimed wood or wood previously stained. Apply liberally by brush, roller, spray or dip. When dipping, allow wood to be immersed five minutes. Thoroughly cover cut ends and joints. For best results, apply between 40°-90°F. away from hot sunlight. Not effective on abraded plywood.

The greater the amount of preservative absorbed by the wood, the more effective the protection. Dries to touch rapidly. Thorough drying requires 24 hours. If desired, a second coat may be applied at any time after the initial application.

The colors shown on this label may vary slightly from the finished results due to differences in type and porosity of wood.



RED DEVIL POLYURETHANE

Stain and V PRESERVA

COVERAGE: Approximately 400 square feet per gallon. Coverage can vary depending upon method of application and roughness of wood.

CLEAN-UP: Clean equipment promptly with Red Devil Brush Cleaner or mineral spirits.

CAUTION: Contains Petroleum Distillates. Harmful if swallowed. If swallowed do not induce vomiting. Call physician immediately. Avoid contact with skin, eyes or clothing. In case of contact, immediately remove contaminated clothing and wash skin with soap and water; for eyes flush with water and get medical attention. Wash clothing before reuse. Do not reuse container. Destroy it by perforating or crushing. Bury or discard in a safe place.

This product is Toxic to fish. Keep out of any body of water. Do not contaminate water by cleaning of equipment, or disposal of waste. Apply this product only as specified on this label.

DO NOT USE, POUR, SPILL OR STORE NEAR HEAT OR OPEN FLAME.

#409 TEAKWOOD		VEHICLE 84.2%	
PIGMENT 15.8%			
Iron Oxide	3.2%		
Silicate	12.6%		
Additives	1.4%		
Bis (Tributyltin) oxide3%		
* Resin Non-Vo	19.0%		
Mineral Spirits & Carriers	63.5%		

*POLYHYDRIC ALCOHOL PARTIALLY ESTERIFIED WITH LINOLENIC, LINOLEIC, OLEIC, PALMITIC & STEARIC ACIDS, PHTHALIC ANHYDRIDE & MODIFIED WITH TOLYLENE DIISOCYANATE.

RED DEVIL PAINTS & CHEMICALS



30 NORTH WEST STREET, MOUNT VERNON, NY 10550

MADE IN U.S.A.

AVAILABLE IN THESE COLORS

AVAILABLE
IN
FIVE
BEAUTIFUL
COLORS
& CLEAR



403
REDWOOD



404
CHESTNUT
BROWN



**KEEPS
WATER OUT
RETARDS
ROT & MILDEW**

THIS CAN CONTAINS

#409 TEAKWOOD

EPA Reg. No. 37291-2

CAUTION:
KEEP OUT OF REACH OF CHILDREN.
SEE ADDITIONAL PRECAUTIONS
ON BACK OF LABEL.
EPA EST. NO. 37291-NY-1

ACTIVE ING
Bis (Tributy
INERT INGI

NET ONE GALLON LIQUID