



UNITED STATES ENVIRONMENTAL PROTECTION AGENCY
WASHINGTON, DC 20460

OFFICE OF CHEMICAL SAFETY
AND POLLUTION PREVENTION

September 17, 2018

Mark Mongiovi
Woodstream Corporation
69 N. Locust St.
P.O. Box 327
Lititz, PA 17543-0327

Subject: Notification per PRN 98-10 – Add optional marketing claims and graphics
Product Name: Woodstream Mouse Killer I
EPA Registration Number: 36488-69
Application Date: 08/31/2018
Decision Number: 544243

Dear Mr. Mongiovi:

The Agency is in receipt of your Application for Pesticide Notification under Pesticide Registration Notice (PRN) 98-10 for the above referenced product. The Registration Division (RD) has conducted a review of this request for its applicability under PRN 98-10 and finds that the action requested falls within the scope of PRN 98-10.

The label submitted with the application has been stamped “Notification” and will be placed in our records.

Should you wish to add/retain a reference to the company’s website on your label, then please be aware that the website becomes labeling under the Federal Insecticide Fungicide and Rodenticide Act and is subject to review by the Agency. If the website is false or misleading, the product would be misbranded and unlawful to sell or distribute under FIFRA section 12(a)(1)(E). 40 CFR 156.10(a)(5) list examples of statements EPA may consider false or misleading. In addition, regardless of whether a website is referenced on your product’s label, claims made on the website may not substantially differ from those claims approved through the registration process. Therefore, should the Agency find or if it is brought to our attention that a website contains false or misleading statements or claims substantially differing from the EPA approved registration, the website will be referred to the EPA’s Office of Enforcement and Compliance.

Page 2 of 2
EPA Reg. No. 36488-69
Decision No. 544243

If you have any questions, you may contact Paul Di Salvo at 703-347-0322 or via email at disalvo.paul@epa.gov.

Sincerely,

A handwritten signature in cursive script that reads "Paul Di Salvo" followed by a small "for" in the bottom right corner.

Gene Benbow, Product Manager 07
Invertebrate and Vertebrate Branch 3
Registration Division (7505P)
Office of Pesticide Programs

MASTER LABEL – OUTER CONTAINER FRONT PANEL (Page 1 of 1)

WOODSTREAM MOUSE KILLER I

[Alternate Brand Names]

- Victor V® Fast-Kill® Brand Refillable Mouse Bait Station*

[Qualifier statement must immediately follow brand name]

** House Mice may consume a lethal dose in a single night's feeding, but it can take two or more days from the time of bait consumption for these mice to die.*

**This Bait Station is Resistant to Tampering by Children.
For Use Indoors Only.**

ACTIVE INGREDIENT:	BY WT.
Bromethalin.....	0.01%
OTHER INGREDIENTS:.....	<u>99.99%</u>
TOTAL:.....	100.00%

KEEP OUT OF REACH OF CHILDREN

CAUTION: See side panel [back panel] [enclosed instruction sheet] for additional precautionary statements and directions for use.

NET CONTENTS:

1.5 oz. up to 1 lb (16 oz.) not to exceed 1 lb per package. Each package contains: 1.5 oz. (0.75 oz. bait block & 1 preloaded refillable bait station) TO 15.75 oz. (20 x 0.75 oz. bait block & 1 preloaded refillable bait station). (*note to EPA Reviewer – this package will **not** exceed 21 bait stations*)

MASTER LABEL – OUTER CONTAINER BACK PANEL (Page 1 of 3)

FIRST AID	
IF SWALLOWED:	Call a poison control center or doctor immediately for treatment advice. Have person sip a glass of water if able to swallow. Do not induce vomiting unless told to do so by the poison control center or doctor. Do not give anything by mouth to an unconscious person.
IF ON SKIN OR CLOTHING:	Take off contaminated clothing. Rinse skin immediately with plenty of water for 15-20 minutes. Call a poison control center or doctor for treatment advice.
Have the product container or label with you when calling a poison control center or doctor or going for treatment.	
TREATMENT FOR PET POISONING	
If animal eats bait, call veterinarian at once.	
NOTE TO PHYSICIAN OR VETERINARIAN	
National Pesticide Information Center: 1-800-858-7378. Contains the nerve poison Bromethalin. This product is not an anticoagulant rodenticide. For humans or animals ingesting bait and/or showing poisoning signs (such as muscle tremors, loss of hind limb use, or seizures for animals), limit absorption by either emesis or gastric lavage. Sublethal symptoms, if present, would be the result of cerebral edema and should be treated accordingly through administration of an osmotic diuretic and corticosteroid.	

PRECAUTIONARY STATEMENTS:

HAZARDS TO HUMANS AND DOMESTIC ANIMALS

CAUTION: Harmful if swallowed. Keep away from children, domestic animals and pets. Wash thoroughly with soap and water after handling, and before eating, drinking, chewing gum, or using tobacco or using the toilet. Any person who retrieves carcasses or unused bait following application of this product must wear waterproof gloves.

ENVIRONMENTAL HAZARDS:

This product is extremely toxic to mammals and birds. Dogs and scavenging mammals and birds might be poisoned if they feed upon animals that have eaten this bait. Do not apply this product directly to water.

DIRECTIONS FOR USE:

It is a violation of federal law to use this product in a manner inconsistent with its labeling.

READ THIS LABEL and follow all use directions and use precautions. Use only for the sites, pests, and application methods described on this label.

IMPORTANT: Do not expose children, pets or other nontarget animals to rodenticides. To help prevent accidents:

1. Store product not in use in a location out of reach of children and pets.
2. Dispose of product container, bait station, and used, spoiled, or unconsumed bait as specified on this label.

MASTER LABEL – OUTER CONTAINER BACK PANEL (Page 2 of 3)

USE RESTRICTIONS:

- DO NOT USE THIS PRODUCT OUTDOORS OR IN AREAS ACCESSIBLE TO CHILDREN, PETS, DOMESTIC ANIMALS, OR NONTARGET WILDLIFE.
- This product may only be used to control House mice inside homes and other residential buildings.
- Do not place bait station in areas where there is a possibility of contaminating food or surfaces that come in direct contact with food.

SELECTION OF TREATMENT AREAS: Determine areas where house mice will most likely find and consume bait. Generally, these areas are along walls, by gnawed openings, in corners and concealed places, between floors and walls, or in locations where house mice or their signs have been seen. Remove as much alternative food as possible.

APPLICATION DIRECTIONS:

1. Remove bait station from package.
2. Place bait station on the floor in areas inaccessible to children, pets, or domestic animals, with flat side down, in areas where signs of House mice have been seen inside homes and other residential buildings.

Use one bait station per typical placement in areas inaccessible to children, pets, and domestic animals. If more than one bait station is used, space the stations 8 to 12 feet apart in suitable locations (see **SELECTION OF TREATMENT AREAS**) in infested buildings. After several days, inspect placements and replace bait stations if contents have been consumed or are contaminated. If no feeding has occurred within three days, bait stations may be moved to other appropriate locations in the building where there is evidence of feeding.

Baiting Strategy: Highest bait consumption is expected to occur on the first day or two after treatment begins. Normally, the volume of bait consumed will be significantly less with bromethalin baits than with anticoagulant baits. Although one night's feeding will usually provide a lethal dose, maintain an uninterrupted supply of bait for at least one week to provide all house mice a chance to feed on the bait. Continue baiting until at least 4 days have passed without signs of new feeding by house mice.

Follow-Up: Wearing gloves, collect and properly dispose of all dead animals and leftover bait. To discourage reinfestation, limit sources of rodent food, water and harborage as much as possible. If reinfestation does occur, repeat treatment.

[INSTRUCTIONS FOR OPENING, FILLING, REFILLING AND RECLOSING]

HOW TO OPEN:

1. Hold the bait station in both hands (Figure 1) with your pointer finger on the back release tab (Figure 2.)
2. While pushing back release tab, squeeze front release tab (Figure 1) and pull out front of station.

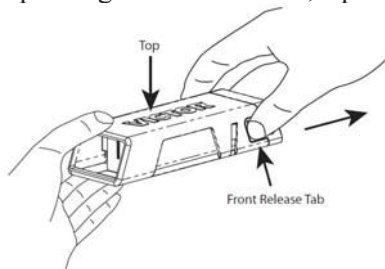


Figure 1

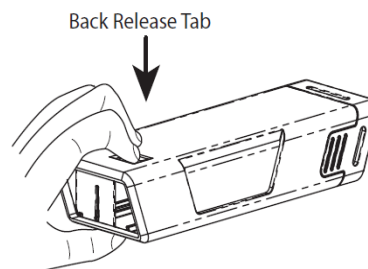


Figure 2

MASTER LABEL – OUTER CONTAINER BACK PANEL (Page 3 of 3)

HOW TO FILL THE BAIT STATION:

1. Wearing gloves, remove a bait block from the package.
2. Place one block on the holder post (Figure 3.)

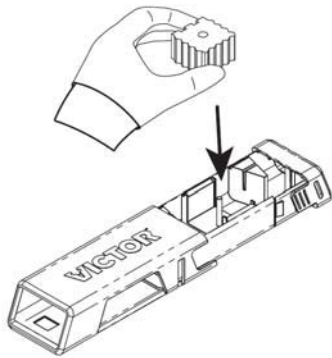


Figure 3

HOW TO CLOSE:

1. Slide front of station back into housing.

STORAGE AND DISPOSAL:

PESTICIDE STORAGE: Store in original container in a cool, dry place inaccessible to children and pets.
PESTICIDE DISPOSAL AND CONTAINER HANDLING: Non-refillable container. Do not reuse or refill this container except as described in the Directions for Use. **If empty:** Place in trash or offer for recycling if available. **If Partly Filled:** Call your local solid waste agency for disposal instructions. Never place unused product down any indoor or outdoor drain.

Note: Seller warrants that this product complies with the specifications expressed in this label. To the extent consistent with applicable law, Seller makes no other warranties, and disclaims all other warranties, express or implied, including but not limited to warranties of merchantability and fitness for the intended purpose. To the extent consistent with applicable law, Seller's liability or default, breach or failure under this label shall be limited to the amount of the purchase price. To the extent consistent with applicable law, Seller shall have no liability for consequential damages.

Manufactured By [For]: Woodstream Corporation
69 N. Locust St
Lititz, PA 17543
For Information Call: 1-800-800-1819
EPA Reg. No. 36488-69
EPA Est. No. 47629-PA-01
Made In USA

MASTER LABEL – LABEL FOR BAIT STATION (Page 1 of 1)

WOODSTREAM MOUSE KILLER I

**This Bait Station is Resistant to Tampering by Children.
For Use Indoors Only.**

ACTIVE INGREDIENT:	BY WT.
Bromethalin.....	0.01%
OTHER INGREDIENTS:	<u>99.99%</u>
TOTAL:	100.00%

Do not allow children or pets to play with station.

KEEP OUT OF REACH OF CHILDREN

CAUTION: See outer package for additional precautionary statements, first aid information and directions for use.

Manufactured By [For]:
Woodstream Corporation
69 N. Locust St
Lititz, PA 17543-0327
For Information Call: 1-800-800-1819

EPA Reg. No. 36488-69

EPA Est. No. 47629-PA-01

NET CONTENTS: 0.75 oz (21.2 g)

MASTER LABEL – OPTIONAL CLAIMS (Page 1 of 2)

[Additional - Optional Marketing/Advertising Claim]

- Palatable bait formulation
- Contains Bromethalin
- 0.01% Bromethalin block
- Ready to use
- For indoor use.
- For use in Attics, Kitchens, Basements, Garages at locations consistent with the limitations set for in the **DIRECTIONS FOR USE**
- Bait station
- Formulated for house mouse control
- Controls house mice
- Kills house mice
- Kills house mice in the home
- For use indoors for control of house mice
- For indoor house mouse control
- Kills Anticoagulant Resistant House Mice
- House Mice may consume a lethal dose in a single night's feeding, but it can take two or more days from the time of bait consumption for these mice to die. House mice cease feeding after consuming a toxic dose.
- This product is effective against anticoagulant-resistant house mice.
- Kills house mice dead
- Helps reduce house mouse problems
- House mice enter and feed inside the bait station
- Durable design
- Dual tunnel entry allows [for] easier [rodent] access to bait
- Open tunnel design
- Bait station is child resistant
- Durable design is child resistant
- Child resistant bait station
- Child tested bait station
- Kid Tested Bait Station
- Kid Resistant bait station
- Kid Tamper Resistant
- Gloves Included
- Fast-Kill® Brand* Bait
- ** House Mice may consume a lethal dose in a single night's feeding, but it can take two or more days from the time of bait consumption for these mice to die.*
- Victor® - Outsmarting Rodents Since 1898.™
- [Includes] 1-21 [Refillable] Bait Station(s)
- 1-21 [Bait] Block(s) [Refills]



MASTER LABEL – OPTIONAL CLAIMS (Page 2 of 2)

