

**PRECAUTIONARY
STATEMENTS
HAZARDS TO HUMANS
AND DOMESTIC ANIMALS
DANGER**

Hazardous vapor. May be fatal if swallowed or inhaled. Consisting of volatile materials, this fumigant should be handled so as to prevent breathing of vapors. Wear a gas mask approved by U.S. Bureau of Mines for protection against organic vapors. Do not get in eyes or on skin or clothing. Wash thoroughly with soap and water after any contact. Do not feed treated feed or grain to livestock until it has been aired enough to remove all fumigant odor. Do not use as a contact spray or to fumigate flour.

ENVIRONMENTAL HAZARDS

Misuse as to quantity, timing or method of application can cause damage or injury to animals, persons, property or crops or cause residues in excess of official tolerances.

**PHYSICAL OR CHEMICAL
HAZARDS**

Grain Fumigant and conditioner classed 50 to 60 between alcohol (ethyl) and kerosene in respect to fire hazard.

**AVOID CONTACT WITH FLAME OR
HOT SURFACES.**

DIRECTIONS FOR USE

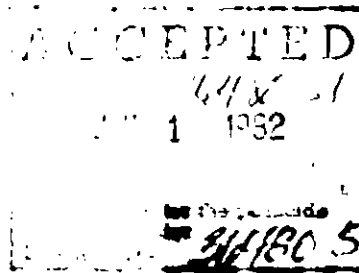
It is a violation of Federal law to use this product in a manner inconsistent with its labeling.

RE-ENTRY STATEMENT

Do not enter any treated structure until it has been aired for at least 24 hours.

STORAGE AND DISPOSAL

Prohibitions: Do not contaminate water, food, or feed by storage or disposal.
Pesticide Disposal: Pesticide spray mixture or residue that cannot be used according to label instructions must be disposed of according to Federal, State or local procedures under the Resource Conservation and Recovery Act.
Container Disposal: Triple rinse (or equivalent) and offer for recycling or reconditioning, or dispose of in a sanitary landfill, or by other approved State and local procedures.
General: Consult Federal, State or local disposal authorities for approved alternative procedures.



KILLS ALL STAGES: Granary Weevil, Rice Weevil, Lesser Grain Borer, Angoumois Grain Moth, Indian Meal Moth, Sawtooth Grain Beetle, Mediterranean Flour Moth, Confused Flour Beetle, Cadelle, Black Carpet Beetle.

ACTIVE INGREDIENTS

Ethylene Dichloride	100.0%
Carbon Tetrachloride	64.6%
Ethylene Dibromide	27.4%
Sulphur Dioxide	5.0%
	3.0%

U.S. Patent No. 2,391,890

Keep Out of Reach of Children

STATEMENT OF PRACTICAL TREATMENT

If swallowed — call a physician or Poison Control Center. Drink 1 or 2 glasses of water and induce vomiting by touching back of throat with finger. Do not induce vomiting or give anything by mouth to an unconscious person.

If inhaled — remove to fresh air. Call a physician at once. Keep patient warm and quiet. If breathing stops, apply artificial respiration.

If on skin — wash thoroughly with soap and water.

If in eyes — rinse with water for 15 minutes and get prompt medical attention.

SEE SIDE AND BACK PANELS FOR ADDITIONAL PRECAUTIONARY STATEMENTS.

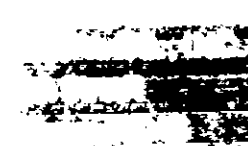
NET CONTENTS

GALLONS (Liters)

EPA Reg. No. 36480-51

EPA Est. No.

Manufactured by:



SPECIAL PRECAUTIONS FOR GRAIN TO BE USED FOR SEED PURPOSES

These precautions must be followed in order to avoid germination reduction

- 1 Do not apply unless moisture content of grain is less than 12% and preferably less than 10%.
- 2 The grain temperature during the exposure period should be between 65° F and 85° F
- 3 The fumigant exposure period must not be more than 24 hours. Provision must be made to remove the fumigant by aeration immediately after the 24-hour exposure. This may be accomplished in tight structures by the use of aeration fans, and in loosely constructed storages by breaking all seals applied when preparing for fumigation. Do not fumigate low viability seed grain, as germination may be further reduced

FARM BIN APPLICATION

Before Fumigation:

FIRST—Make grain bin as airtight as possible. Close all cracks and openings in walls and floor of bin. Seal all crevices with heavy paper. Plug holes with tightly packed wet newspapers or sacks

SECOND—Remove crusted and molded layers from the surface of the grain. Level grain and keep surface six inches below top of bin

How To Apply:

Apply fumigant directly to surface of grain in a wet, coarse, fan-shaped stream. Best results are obtained by distributing the fumigant rapidly and evenly over entire surface of grain. If possible, fumigant should be applied from outside of bin. Seal bin after application. Inspect every thirty days for reinfestation and re-treat as needed

The following dosages are recommended for satisfactory results under normal treating conditions only. When grain shows heavy infestation or is of high moisture content the dosages listed below should be increased from 1/2 to 1 gallon per 1000 bushels (except for seed grain, see Special Precautions for Grain to be Used for Seed Purposes)

DOSAGE TABLE

Gallons Per 1000 Bushels Grain			
Type Bin	Wheat, Oats, Rice	Corn	Grain Sorghum
STEEL AND CONCRETE	2	4	6
WOODEN	3	6	8
FLAT STORAGE	3	6	8

ELEVATOR APPLICATION

How To Apply:

Apply fumigant when bin is being filled with grain, or during grain turning. Pour fumigant directly onto the grain as it enters the bin. Apply at intervals so that an application is made for each ten feet of bin height filled. Add an extra 2 to 4 gallons to the first and last 500 bushels entering the bin. Seal the bin after application. Don't move treated grain for 72 hours (except for seed grain; see Special Precautions for Grain to be Used for Seed Purposes). Inspect treated grain every month for signs of reinfestation and re-treat as necessary.

The following dosage are recommended for satisfactory results under normal treating conditions only. When grain shows heavy infestation or is of high moisture content the dosages listed below should be increased from 1/2 to 1 gallon per 1000 bushels (except for seed grain; see Special Precautions for Grain to be Used for Seed Purposes).

DOSAGE TABLE

Gallons Per 1000 Bushels Grain			
Type Bin	Wheat, Oats, Rice	Corn	Grain Sorghum
STEEL AND CONCRETE	2	4	6
WOODEN	3	6	8
FLAT STORAGE	3	6	8

Fumigated areas must be placarded on all entrances with signs containing at least the signal word **DANGER** and the "Skull and Crossbones" and the words "Area under fumigation, do not enter until completely aerated", the date of fumigation, name of the fumigant used, emergency telephone number for contact, and the name and address of the fumigator. Do not remove warning signs until the fumigated area is completely aerated and safe for entry, as indicated by a suitable detector.

GRAIN CONDITIONING

To help prevent corn damage due to heating and localized increased moisture caused by grain insects, apply 2 gallons fumigant on top of load, allowing to remain in car while on way to market.

To help remove odors from boxcar before loading, splash or sprinkle 1 gallon fumigant into car, close tightly, and let stand overnight. Thoroughly ventilate before loading.