

[36301-1]

DIRECTIONS

FLIES, MOSQUITOES, GNATS AND SMALL PESTS: For best results use in a good sprayer adjusted to deliver a fine mist of insects when possible. Close doors and windows. Spray thoroughly misting the room with the spray. Use 1 fluid ounce per cubic foot of space. Keep sprayed rooms closed for 15 minutes. If necessary. Sweep up and destroy fallen insects.

WASPS: Application should be made in late evening when insects are active. Spray into hiding and breeding places contacting as many insects as possible.

FOR CRAWLING INSECTS: Adjust sprayer to produce large wetting-type spray particles. Spray directly on insects whenever possible.

ROACHES, WATERBUGS, CRICKETS, SPIDERS, TICKS, CENTIPEDES: Spray insects directly when possible. Spray thoroughly into hiding places, cracks, crevices, moist areas, openings around pipes and sinks, under refrigerators, baseboards and storage areas.

ANTS: Spray trails, nests and points of entry. Spray on ants where possible.

SILVERFISH: Spray insects directly when possible. Spray thoroughly on all baseboards, windows, door frames, bookcases and storage areas. Repeat treatment as often as necessary.

EXPOSED STAGES OF GRANARY WEEVILS, CONFUSED FLOUR BEETLES, ANGOUMOIS GRAIN MOTHS, CADELLES, RUST RED FLOUR BEETLES, SAW-TOOTH GRAIN BEETLES, SPIDER BEETLES, GRAIN MITES, RICE WEEVILS: Wet surfaces of the storage area thoroughly after thorough cleanup and prior to filling with grain. Floors, walls and partitions in flour mills, feed mills and food processing plants should be sprayed with enough solution to wet the surface, paying attention to cracks and crevices where insects may be harbored. Liberally spray around and under pallets to directly contact as many insects as possible. Hit insects directly with spray whenever possible. Repeat application as often as necessary. Do not apply directly to grain or oil-bearing seeds. Infested stored food products should be fumigated or treated by other effective methods using an approved product intended for this purpose.

**DO NOT REMAIN IN TREATED AREAS.
VENTILATE THE AREA AFTER TREATMENT IS COMPLETED.**

ACTIVE INGREDIENTS

Pyrethrins	0.50% w/w
*Piperonyl Butoxide	3.00%
Petroleum distillate	96.50%
	100.00%

*Equivalent to 2.40% (butylcarbityl) (6-propylpiperonyl) ether plus 0.60% related compounds.

CONTAINER DISPOSAL: Do not reuse empty drum. Return to drum reconditioner or destroy by perforating or crushing and burying in a safe place away from water supplies.

Harmful to fish. Remove promptly. Use in food areas. Foods should be removed from surfaces before using. Do not use on food. This product does not contain phosphorus. Apply this

J-Chem INC.
HOUSTON, TEXAS
5 gal. Net

NOTICE: Seller assumes no responsibility for damages or loss of property and is reasonable with directions and other warranty. POSE, express instructions, or otherwise foreseeable to

ts are ar
s as possible
ing-type spray

PEDES: Spray
aces, cracks,
r refrigerators,

here possible.
roughly on all
Repeat treat-

UR BEETLES,
EETLES, SAW-
CE WEEVILS:
p and prior to
eed mills and
et the surface,
ored. Liberally
s as possible.
ation as often
Infested stored
methods using

ETED.

ACTIVE INGREDIENTS

Pyrethrins	0.50% w/w
*Piperonyl Butoxide	3.00%
Petroleum distillate	96.50%
	100.00%

*Equivalent to 2.40% (butylcarbityl) (6-propylpiperonyl) ether plus 0.60% related compounds.

CONTAINER DISPOSAL: Do not reuse empty drum. Return to drum reconditioner or destroy by perforating or crushing and burying in a safe place away from water supplies.

Harmful if swallowed. Avoid contamination of feed and foodstuffs. Remove pets, birds and cover fish aquariums before spraying.

Use in food processing plants only when plant is not in operation. Foods should be covered or removed during treatment. All food processing surfaces should be covered during treatment or thoroughly cleaned before using.

Do not use or store near heat or open flame.

This product is toxic to fish. Keep out of lakes, streams, or ponds. Do not contaminate water by cleaning of equipment, or disposal of wastes. Apply this product only as specified on this label.

J-Chem INC.
HOUSTON, TEXAS
5 gal. Net

NOTICE: Seller warrants that the product conforms to its chemical description and is reasonably fit for the purposes stated on the label when used in accordance with directions under normal conditions of use, but neither this warranty nor any other warranty of MERCHANTABILITY or FITNESS FOR A PARTICULAR PURPOSE, express or implied, extends to the use of this product contrary to label instructions, or under abnormal conditions, or under conditions not reasonably foreseeable to seller, and buyer assumes the risk of any such use.

LOT NO.

J-PYREDI-510

DIRECTIONS FOR USE

FLIES AND SMALL FLYING MOTHS: For most effective control, spray the mist. Direct spray at insects flying upward in all directions. Use 1 ounce for each 1,000 sq. ft. Repeat treatments as needed.

EPA EST. 36301-TX-1
EPA REG 36301-1

SYNERGIZED PYRETHRINS MILL SPRAY

FOR: Bakeries, Food Plants, Restaurants, Schools, Hotels, Office Buildings, Mills and Food Handling Plants.

INGREDIENTS

.....
Technical

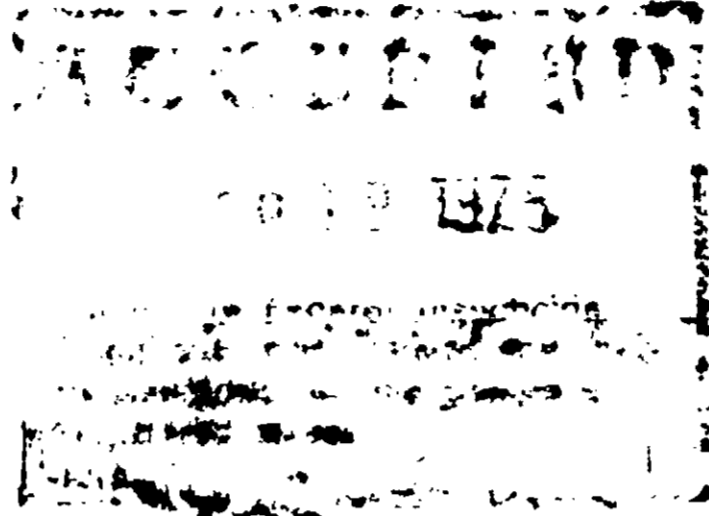
J-chem

INC.

HOUSTON, TEXAS

5 gal. Net

J-PYREDI-510



most effective
Direct spray at
in all directions
for each 1,000
repeat treatments

EPA EST. 36301-TX-1
EPA REG 36301-1

SYNERGIZED PYRETHRINS MILL SPRAY

FOR: Bakeries, Food Plants, Restaurants, Schools, Hotels, Office Buildings,
Mills and Food Handling Plants.

INGREDIENTS

.....
Technical

J-chem

INC.

HOUSTON, TEXAS

5 gal. Net