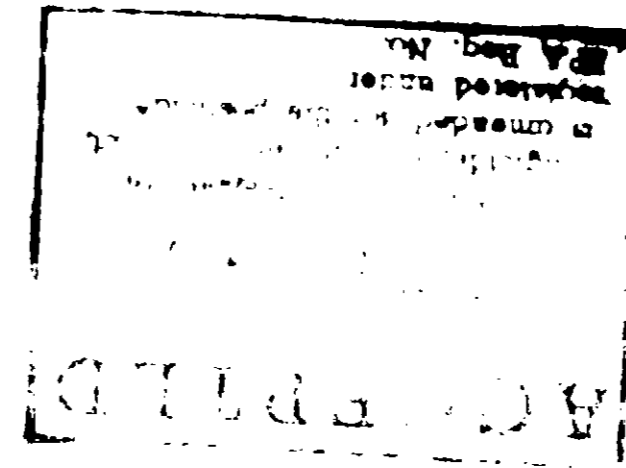


NET WEIGHT 50 LBS



Western Stockmen's Supply

GRUB & FLY CONTROL SALT (CATTLE FEED SUPPLEMENT)

MEDICATED

FOR AID IN CONTROL OF GRUBS AND HORNFLIES

For Continuous Self Feeding of Cattle During the Summer for Control of Hornflies and Cattle Grubs; for beef cattle and non-lactating dairy animals only.

Follow the mixing and feeding directions carefully

ACTIVE INGREDIENTS

Practically Active Ingredient: Ronnel (O,O dimethyl O-(2,4,5 trichlorophenyl) phosphorothioate) 6.0%

INERT INGREDIENTS

Salt, Diatomaceous earth, Cane molasses, Mineral oil, Glycerol monostearate, Pyrogenic silica 94.0%

GUARANTEED ANALYSIS

Salt (NaCl), not less than 82.7%
Salt (NaCl), not more than 86.7%

WARNINGS

Use as a sole source of salt.

Dairy cows should be treated early in the dry period but not if the dry period occurs between the end of the adult horn fly season and before grubs reach the back.

Do not feed to dairy animals that will produce milk for human consumption for 10 days prior to freshening. If dairy animals are treated during the dry period and a supplemental mineral has not been withdrawn the required 10 days, do not feed to nursing milk cows until they are fed for 10 days after the last feeding of this product.

Do not feed to nursing milk cows that have been treated with this product until they are fed for 10 days after the last feeding of this product.

Do not feed to nursing milk cows that have been treated with this product until they are fed for 10 days after the last feeding of this product.

GUARANTEED ANALYSIS

Salt (NaCl), not less than	82.7%
Salt (NaCl), not more than	86.7%

WARNINGS

E.P.A. Reg. No. 35500-1

Use as a sole source of ronnel.

Dairy cows should be treated early in their dry period but *only* if the dry period occurs between the end of the adult heel fly season and before grubs reach the back.

Do not feed to dairy animals that will produce milk for human consumption for 10 days prior to freshening. If dairy cows or heifers freshen during feeding program, or if insecticidal mineral has not been withdrawn the required 10 days prior to freshening, milk must not be used for food for 10 days after the last feeding of this product.

Do not feed to sick animals or animals under stress, such as those just shipped, dehorned, castrated, or weaned within the last 3 weeks.

Ronnel is a cholinesterase inhibitor. Do not feed this product to animals simultaneously or within a few days before or after treatment with or exposure to cholinesterase-inhibiting drugs, pesticides, or chemicals. Consult a veterinarian at the first sign of adverse reaction. Atropine is an antidote.

Do not feed to any animal within ten days of slaughter.

WARNING

KEEP OUT OF REACH OF CHILDREN

Wash hands with soap and water after handling. This material contains a cholinesterase inhibitor. Treat symptomatically. Atropine is an antidote.

This product is toxic to fish. Keep out of lakes, streams, and ponds. Do not contaminate water by cleaning of equipment or disposal of wastes. Use this product only as specified on this label.

Do not reuse empty container. Destroy it by burning or burying in non-croplands away from water supplies.

Harmful if swallowed. Irritating to the skin and eyes. Do not get in eyes. Avoid contact with skin. Avoid breathing of dust.

DIRECTIONS

WHEN TO FEED:

For control of hornflies on pastured cattle start feeding STAY • STRONG FX GRUB & FLY CONTROL SALT in the spring before flies appear. Continue feeding throughout the summer and into the fall until cold weather restricts fly development. For grub control, feed continuously for a minimum of 75 days.

HOW MUCH TO FEED:

Recommended consumption of STAY • STRONG FX GRUB AND FLY CONTROL SALT containing 6% ronnel is 0.2 lb. / 100 lb. of body weight per head per month.

HOW TO FEED:

Feed STAY • STRONG FX GRUB & FLY CONTROL SALT continuously, free choice to cattle in covered mineral feeder troughs or boxes. Provide one mineral feeder box or feeding space for each 15 to 20 head of cattle. Locate mineral feeder boxes and troughs near watering areas. To encourage uniform and normal consumption, put out only a 7 day supply at one time, and keep feeder boxes and troughs clean. For adequate control of insects, each animal must eat its share of mineral. Small, late calves may require an additional 7- or 14 day feeding program after weaning for control of pests.

WARNING

During continuous feeding program, do not allow cattle to eat any of STAY • STRONG FX GRUB & FLY CONTROL SALT and do not feed any additional atropine.

STORE IN A COOL, DRY PLACE

© 1984, W.S.S.

WESTERN STOCKMEN'S SUPPLY

W.S.S. 10000 10000

10000