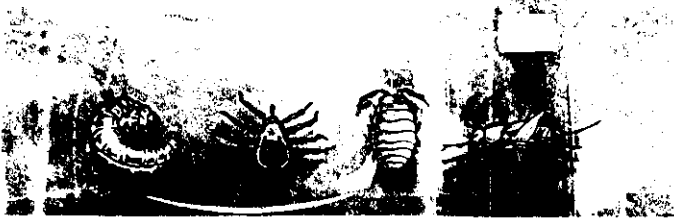


34911-2

05/08/1979

1/1

Best Available Copy



Kill-a-bug Lawn Granules

Hi-Yield®

Kill-a-bug Lawn Granules Containing DURSBAN*



Kill-a-bug Lawn Granules

Hi-Yield Kill-a-bug Lawn Granules Containing DURSBAN®

The product is recommended to control Certain White Grubs, Japanese Beetles, Sod webworms, Lawn Moths, Ants, Armyworms, Brown Dog Flies, Cicadas, Curculionids, Earwigs, Fleas, Sawbugs, Pillbugs, and Hydracids, Turf grass Weeds infesting Home Lawns and Other Ornamental Turf Areas.

DIRECTIONS FOR USE

It is a violation of Federal Law to use this product in a manner inconsistent with its labeling.

Apply uniformly to home lawns and other ornamental and recreational turf grass areas using any hand or power operated gravity or rotary type spreader designed for application of granular materials. Treat when insects first appear at the rate of 25 pounds per 5000 sq. ft. To help obtain uniform distribution, apply one-half the required amount of product in one direction, then apply the balance at a right angle. Immediately after application, thoroughly water the treated turf to wash the insecticide into the zone of insect infestation. Consult the following table to determine amounts and water needed for smaller sized areas. Re treat as necessary.

RATES TO USE

Area to be Treated	Pounds of Dursban 5G	Gallons of Water to Sprinkle on Turf after Treatment
1000 sq. ft.	5	30
5000 sq. ft.	25	150
10750 sq. ft.	50	325

SPREADER SETTING

Mower	5 lbs.		10 lbs.	
	Per 1000 Sq. Ft.	Per 1000 Sq. Ft.	Per 1000 Sq. Ft.	Per 1000 Sq. Ft.
Ferti-lance CYCLONE	4 1/2	9	5 1/2	11
Ferti-lance DELUXE	7	14	8	16
Scott	7 1/2	15	9	18
Swan	7	14	8 1/2	17

NOTE: Above spreader settings are approximate. Accurately weigh a few pounds into your spreader and apply to a measured area. Then adjust the spreader setting, if necessary to assure correct rate of application.

To control certain white grubs (larvae of European chafers and Japanese beetles) use 1/2 to four times the amount shown in the table (i.e. 10 to 20 pounds per 1,000 sq. ft.) Apply the granules uniformly over the area treated followed immediately by thorough watering to wash the insecticide into the turf. For best results treat when grubs are young and actively feeding near the soil surface usually during late July and August. Consult your local Agricultural Extension Service specialist for proper time to treat in your area.

To control Hyperodes turfgrass weevils use twice the rate shown in the table. Treat suspected problem areas in mid April and again in mid May. Consult your local Agricultural Extension Service specialist for best time to treat in your area.

STORAGE AND DISPOSAL

Storage: Keep away from food, feedstuffs, and domestic water supplies. Keep container closed.

Disposal: Do not reuse empty container. Wrap container and put in trash collection.

Buyer assumes all risks of use, storage or handling of this material not in strict accordance with directions given herewith.

*DURSBAN® trademark of The Dow Chemical Co., U.S. Patent

Hi-Yield Chemical Company BONHAM, TEXAS 75418

NET WEIGHT 25 LBS.

ACCEPTED

MAY 8 1979

Under contract to the State of Texas

Fungicide

as amended

registered under

34911-12