



UNITED STATES ENVIRONMENTAL PROTECTION AGENCY
WASHINGTON, DC 20460

OFFICE OF CHEMICAL SAFETY
AND POLLUTION PREVENTION

June 3, 2022

Catherine Kickham
Wexford Labs
325 Leffingwell Avenue
Kirkwood, MO 63122

Subject: PRIA Label Amendment – Add additional efficacy claims
Product Name: Wexford Disinfectant Wipes
EPA Registration Number: 34810-37
Application Date: 11/04/2021
Action Case No.: 00336291

Dear Ms. Kickham:

The amended label referred to above, submitted in connection with registration under the Federal Insecticide, Fungicide and Rodenticide Act, as amended, is acceptable. This approval does not affect any conditions that were previously imposed on this registration. You continue to be subject to existing conditions on your registration and any deadlines connected with them.

A stamped copy of your labeling is enclosed for your records. This labeling supersedes all previously accepted labeling. You must submit one copy of the final printed labeling before you release the product for shipment with the new labeling. In accordance with 40 CFR 152.130(c), you may distribute or sell this product under the previously approved labeling for 18 months from the date of this letter. After 18 months, you may only distribute or sell this product if it bears this new revised labeling or subsequently approved labeling. "To distribute or sell" is defined under FIFRA section 2(gg) and its implementing regulation at 40 CFR 152.3.

Should you wish to add/retain a reference to the company's website on your label, then please be aware that the website becomes labeling under the Federal Insecticide Fungicide and Rodenticide Act and is subject to review by the Agency. If the website is false or misleading, the product would be misbranded and unlawful to sell or distribute under FIFRA section 12(a)(1)(E). 40 CFR 156.10(a)(5) list examples of statements EPA may consider false or misleading. In addition, regardless of whether a website is referenced on your product's label, claims made on the website may not substantially differ from those claims approved through the registration process. Therefore, should the Agency find or if it is brought to our attention that a website contains false or misleading statements or claims substantially differing from the EPA approved registration, the website will be referred to the EPA's Office of Enforcement and Compliance.

Page 2 of 2
EPA Reg. No. 34810-37
Decision No. 00336291

Your release for shipment of the product constitutes acceptance of these conditions. If these conditions are not complied with, the registration will be subject to cancellation in accordance with FIFRA section 6. If you have any questions, please contact Stacey Grigsby by phone at 703.305.6440, or via email at grigsby.stacey@epa.gov

Sincerely,

A handwritten signature in black ink, appearing to read "Marcel Howard". The signature is fluid and cursive, with the first name "Marcel" being more prominent than the last name "Howard".

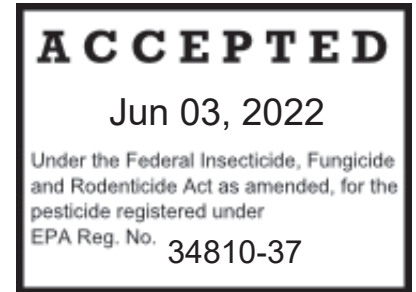
Marcel Howard
Acting Product Manager 34
Regulatory Management Branch II
Antimicrobials Division (7510M)

Enclosure: Accepted stamped label

NOTE: {Bold, italicized text and/or text in {braces} is information for the reader and is not part of the label.} [Bracketed information is optional text.] Highlighted text is new. Strike-through (text) means removed

WEXFORD DISINFECTANT WIPES

ACTIVE INGREDIENT:	
Citric Acid	0.60%
OTHER INGREDIENTS:	<u>99.40%</u>
[Includes biodegradable detergents]	
TOTAL	100.00%



KEEP OUT OF REACH OF CHILDREN

{Note: This product meets EPA's Toxicity Category IV by all routes of exposure. Therefore, a signal word, precautionary language and first aid statement is not required in accordance to EPA label review manual.}

[CAUTION]

[See [left] [side] [right] [back] [bottom] [panel][outer][container] for [Precautionary Statements] [and] [First Aid] [Directions for Use] [Storage and Disposal]

[PRECAUTIONARY STATEMENTS]

[HAZARD TO HUMANS AND DOMESTIC ANIMALS]

[CAUTION: Causes moderate eye irritation. Avoid contact with eyes or clothing. Wash thoroughly with soap and water after handling and before eating, drinking, chewing gum, using tobacco, or using the toilet.]

[FIRST AID]

[IF IN EYES {or} IN CASE OF EYE CONTACT: Hold eyelids open and flush with a steady, gentle stream of water for 15 minutes. Remove contact lenses, if present, after the first five minutes, then continue rinsing. Call a Poison Control Center or doctor for further treatment advice.]

Net Contents[:] _____

Listed in pounds and ounces

Optional

[X [Pre-moistened **or** Wet][Wipes **or** Towelettes]] [(X) x (X)]

(e.g. 100 Pre- moistened Towelettes 7"x 8")

[Country of origin (insert country)] [Manufactured/Made in (insert country)]

[Made in the USA [of] [with] [U.S.] [and [imported] [global] [parts] [components]]]

[with domestic and imported ingredients]

[Barcode] [DOT Symbols] [QR Code] [Ingredients:] [Questions:] [Patent Info:] [Telephone No.] [Website]

EPA Reg. No. 34810-37

EPA Est. No. *[insert Est. No. here]*

[[Beginning of] Lot **{or}** Batch Code indicates EPA Est. No.]

[SDS #: *[insert SDS number here]*][Reorder #: *[insert reorder number here]*]

[Packed For:] [Distributed By:] [Sold By:] [Manufactured By [or for]:][Marketed By [or for]]

Wexford Labs, Inc. 325 Leffingwell Avenue Kirkwood, Missouri 63122

NOTE: {Bold, italicized text and/or text in {braces} is information for the reader and is not part of the label.} [Bracketed information is optional text.] Highlighted text is new. Strike-through (text) means removed

STORAGE AND DISPOSAL:

{For packaging not to be refilled:}

Do not leave containers open during storage. No special handling is required. **Towelette:** Do not reuse towelette. Dispose of used towelette in trash. **Dispenser:** Nonrefillable container. Do not reuse or refill this container. Offer for recycling if available.

or

Dispose of used towelette in trash. Do not leave container open during storage. Do not reuse or refill empty container. Offer for recycling if available.

or

Store airtight at room temperature. Dispose of used towelette in trash. [Nonrefillable container.] Do not reuse or refill this empty container. Offer empty container for recycling. If recycling is not available, discard in trash.

{For packaging to be refilled:}

[Store airtight at room temperature.] Dispose of used towelette in trash. Do not leave container open during storage. Do not reuse or refill empty container except as described in the directions for use. Refill only with this product. Offer for recycling if available.[If recycling is not available, discard in trash.]

{When back label is attached as a booklet}

Peel –or– Pull [back] [here] [for additional directions –or– instructions [for use]]

NOTE: {Bold, italicized text and/or text in {braces} is information for the reader and is not part of the label.} [Bracketed information is optional text.] Highlighted text is new. Strike-through (text) means removed

TABLE 1: LIST OF ORGANISMS THAT MAY BE INCLUDED ON LABEL

DISINFECTING

[BACTERICIDAL] [Bactericidal [Activity]][In the presence of 5 % blood serum,] [is effective against]	ATCC and/or Strain	Contact Time
Pseudomonas aeruginosa [P. aeruginosa]	[ATCC 15442]	2 Min[utes]
Salmonella enterica [formerly Salmonella Choleraesuis]	[ATCC 10708]	2 Min[utes]
Staphylococcus aureus [S. aureus][Staph]	[ATCC 6538]	2 Min[utes]
Carbapenem-resistant Klebsiella pneumoniae	[ATCC BAA 2146]	5 Min[utes]
Enterococcus faecalis Vancomycin Resistant [VRE]	[ATCC 51575]	5 Min[utes]
Staphylococcus aureus - MRSA	[ATCC 33591]	5 Min[utes]
Escherichia coli O157:H7 [E. coli]	[ATCC 43888]	5 Min[utes]
Listeria monocytogenes	[ATCC 19117]	5 Min[utes]
Staphylococcus epidermidis - MRSE	[ATCC 51625]	5 Min[utes]
Acinetobacter baumannii	[ATCC 19606]	10 Min[utes]
[*VIRUCIDAL] [In the presence of 5 % blood serum,] [is effective against]	ATCC and/or Strain	Contact Time
[¶] SARS-CoV-2 [(cause of COVID-19)] [(COVID-19 Virus)]	[Strain USA-WA1/2020]	30 Sec[onds]
[‡] Rhinovirus [Type 14] [cold virus]	[Strain 1059]	3 Min[utes]
Hepatitis B Virus [HBV], [Duck Hepatitis B Virus (DHBV) as surrogate]	[Grimaud Strain]	3 Min[utes]
Hepatitis C Virus [HCV], [Bovine Viral Diarrhea Virus [BVDV] as surrogate]	[Strain NADL]	3 Min[utes]
Human Immunodeficiency Virus Type 1(HIV-1) (AIDS Virus)	[Strain HTLV-IIIB]	5 Min[utes]
[‡] Influenza A Virus [flu virus]	[Strain Hong Kong][H3N2][ATCC VR-544]	5 Min[utes]
[‡] Respiratory Syncytial Virus [RSV] [cold virus]	[ATCC VR-26] [Strain Long]	5 Min[utes]
Rotavirus	[Strain WA] [ATCC VR-2018]	5 Min[utes]
Feline Calicivirus [surrogate for Norovirus]	[Strain F-9]	5 Min[utes]
Adenovirus Type 2	[ATCC VR-846]	5 Min[utes]
Herpes Simplex Virus Type 1	[ATCC VR-733]	5 Min[utes]
Herpes Simplex Virus Type 2	[ATCC VR-734]	5 Min[utes]
Vaccinia Virus	[ATCC VR-119]	5 Min[utes]
Canine Parvovirus [CPV]	[ATCC VR-2017, Strain Cornell]	10 Min[utes]
Poliovirus Type 1	[Strain Brunhilde][ATCC VR-1000]	10 Min[utes]

NOTE: {Bold, italicized text and/or text in {braces} is information for the reader and is not part of the label.} [Bracketed information is optional text.] Highlighted text is new. Strike-through (text) means removed

[FUNGICIDAL] [In the presence of 5 % blood serum,] [is effective against]	ATCC and/or Strain	Contact Time
Trichophyton interdigitale	[ATCC 9533]	2 Min[utes]
Candida albicans	[ATCC 10231]	5 Min[utes]
[TUBERCULOCIDAL] At 20°C / 68°F on previously cleaned hard non-porous inanimate surfaces.	ATCC and/or Strain	Contact Time
Mycobacterium bovis [M. bovis] [TB]	[BCG] [Organon Teknika Corp.]	5 Min[utes]

{Shortened organism names will only be used on the product label when the full organism name is also present on the product label. Parenthesis may be used (optional) when listing shortened name, ATCC, or Strain.}

[ALLERGENS]

- [Spray][Wipes](s) away dirt [and][allergens]
- This product removes the following allergens: [cat dander], [cockroach debris/matter/particles], [dog dander], [dust mite debris/matter/particles], [pet dander], [pollen particles] [from timothy grass], [grass].

NOTE: {Bold, italicized text and/or text in {braces} is information for the reader and is not part of the label.} [Bracketed information is optional text.] Highlighted text is new. Strike-through (text) means removed

OPTIONAL MARKETING CLAIMS

DISINFECTION CLAIMS

- [Cleans][Disinfects][Deodorizes][Germicidal] [Tuberculocidal][Fungicidal][Virucidal*]
- [Antibacterial] kitchen disinfectant cleaner
- [Antibacterial] bathroom disinfectant cleaner
- [Antibacterial] household disinfectant cleaner
- [Antibacterial] formula
- Disinfects while you clean²
- Clean and disinfect in one step²
- Disinfect and clean in one step²
- Disinfects & deodorizes²
- Kills 99.9 % of [household] germs³
- Disinfectant formula
- Germicidal Detergent
- Everywhere disinfectant¹
- [Eliminates] [Effective Against] [Kills] 99.9 % of Bacteria
- [Eliminates] [Effective Against] [Kills] 99.9 % of Viruses*
- Broad Spectrum [Hospital] [Disinfectant] [Germicide]
- [Eliminates] [Kills] 99.9% of bacteria & viruses* including flu virus[‡]
- Broad spectrum germicidal
- Kills [cold] [&] [flu] viruses[‡]
- [Kill[s]] [Remove[s]] [Effective against][Eliminates 99.9% of] [99.9% of][the following] [organisms:][germs³][harmful bacteria and viruses*][**List any organism included in Table 1**][commonly found in/on **insert option from Tables 3 or 4**]
- [One step cleaning -and/or- disinfecting -and/or- deodorizing] ²
- [Disinfect -and/or- touch-up clean] [Cleans -and/or- disinfects -and/or- deodorizes] [In one step]²
- Kills 99.9% of household **or** kitchen **or** bathroom germs³ [,] [botanically] [on hard, non[-]porous surfaces]
- Wipe away 99.9% of germs³ and allergens
- Wipe away 99.9% of germs³ and allergens [even on toys]
- One step disinfectant²
- One-step disinfecting wipes²
- Kills M. bovis the organism that causes TB
- Helps reduce cross-contamination between treated surfaces
- Disinfecting Wipe
- Disinfectant Wipe
- Antibac Bathroom Wipes
- Antibac [Multi-Purpose] Wipes
- Kills 99.9% of germs³ before they [multiply **and/or** grow **and/or** thrive **and/or** spread **and/or** reproduce]
- Clean **and/or** Disinfect on the go¹
- Disinfect [your cart][before you shop]
- [Convenient] Disinfectant [for your cart]
- [Convenient] cart [cleaning] [and] [disinfecting]
- Disinfecting wipes for [your car][cars][automobiles]¹

NOTE: {Bold, italicized text and/or text in {braces} is information for the reader and is not part of the label.} [Bracketed information is optional text.] Highlighted text is new. Strike-through (text) means removed

- Disinfects in [just 5 minutes][as little as ***{insert shortest listed contact time on label}****]
- Kills viruses* in [just 5 minutes][as little as ***{insert shortest listed virucidal contact time on label}****]
- [Convenient] Back-to-school disinfectant
- [Daily] [Convenient] Disinfectant
- [Convenient] Disinfectant for your [holiday] [party/event/gathering]
- [Hey] [Mom] [Teacher[s]] [!] [.,] [Be] [Are you] Ready for [[back-to-] school] [[the] [cold] [and] [or] [flu season]] [the holiday[s] [season]] [?] [!]
- [Sensible][No compromise][Disinfectant][Formula]
- A fresh start for all [but][except][germs³][unless you're a germ]
- Kills the virus[es] † that cause[s] [the] [common] [cold[s]] [cold (Rhinovirus)] [and] [or] flu
- Life [doesn't][shouldn't] [have to] stop for [cleaning ***and/or*** disinfecting]
- A [smart] way to [disinfect] [and] [clean] the [bathroom] [kitchen] [home] [household] [office] [botanically]¹
- A [smart ***and/or*** convenient ***and/or*** reliable] way to disinfect [the interior of] [your vehicle] [vehicles][interiors]¹
- [Low [-streak ***and/or*** residue]] [Formula] [Wipe] [Great] [Use it] [For] [Daily] [Sensible] [Convenient] [cleaning] [and] [disinfecting] [Every day ***and/or*** daily] [on] [hard, nonporous] [surface[s]]
- [Say] Boo[!] to [the flu virus*] [household germs³] [kitchen germs³] [bathroom germs³] [[this [year] [winter] [fall] [season]]
- Say goodbye to germs³ [and harsh chemical odors]
- Send germs³ packing[!]
- Germ³ Buster/Blaster
- Change the way you clean and disinfect
- Kills 99.9% of germs³ including cold & flu viruses[†]
- Tested [and proven effective] against the COVID-19 virus^P [in 30 sec[onds]] on hard nonporous surfaces
- [Proven to] Kill[s] [99.9% of] the COVID-19 virus^P [which causes COVID-19] on hard nonporous surfaces
- Disinfects hard, nonporous surfaces against SARS-CoV-2 [the cause of -or- the coronavirus that causes COVID-19] [in 30 sec[onds]] on hard nonporous surfaces
- [Now] Tested [and proven [effective]] to help reduce the cross contamination of (the) COVID-19 virus^P between treated hard nonporous surfaces
- Effective against SARS-Related Coronavirus 2 [SARS-CoV-2] [USA-WA1/2020] in 30 seconds
- [Effective against] [Disinfects] [Kills] [99.9%] SARS-CoV-2 virus[, the cause of COVID-19]
- Kills the coronavirus^P that causes COVID-19
- Kills [the] COVID-19 virus^P
- Kills the virus^P that causes COVID-19
- Kills [99.9% of] SARS-CoV-2, which causes COVID-19]
- [Proven to] kill[s] the virus^P that causes COVID-19
- Wipes out 99.9% of the COVID-19 [corona]virus^P
- Worry free [disinfecting [against SARS-CoV-2[, the COVID-19 virus]]]

NOTE: {Bold, italicized text and/or text in {braces} is information for the reader and is not part of the label.} [Bracketed information is optional text.] Highlighted text is new. Strike-through (text) means removed

CLEANING AND DEODORIZING CLAIMS

- Quick and easy cleaning
- Effectively controls odor
- [Eliminates] odor-causing bacteria
- [Eliminates] odor
- Multi-Purpose
- Multi-Purpose Cleaner
- Multi-Surface [formulation]
- Carpet Cleaner and Deodorizer
- Bathroom Cleaner
- Everyday Cleaner
- Clean without a [harsh] [strong] chemical odor[s]
- Removes allergens
- Change the way you clean with a product that's simple to use and can help clean up life's everyday messes
- Tough on [dirt] [grime] [messes], easy to use.
- Tough on [dirt] [grime] [messes], easy on the planet
- Deep Cleaning [and Deodorizing]
- Reaches [the places][where] dirt hides
- Breaks down the bacteria which causes odors, eliminating the source.
- [Effectively] Cleans [soft surfaces] [fabrics]
- Kills odor causing bacteria
- Clean **and/or** Destroy **and/or** Withstand **and/or** Weather tough messes
- Gentle on [most] surfaces
- Gentle wipe for easy cleaning
- Easy cleaning for [kitchen] surfaces
- Put **this product/product name** on your school supply list to help keep your child's classroom clean
- Cleans to a shine
- Leave your surfaces sparkling [clean]
- Removes [more than] 99% of [pet][indoor **and/or** outdoor] allergens [of concern][that cause sneezing **and/or** coughing **and/or** runny nose]
- Unbelievable cleaning strength
- A conscionable clean
- Guilt-free clean
- [Better/brighter clean], [Better/brighter home], [Better/brighter day]
- Cleans [**insert number**]x Better
- Powerful clean with a [pleasant][beautiful][fresh] scent
- Change the way you clean
- Demolishes **and/or** Dissolves grease **and/or** grime **and/or** stuck on messes
- Perfect **and/or** essential for [household][classroom] cleaning
- Leaves your home looking like new
- Maximum cleaning, minimum effort
- Powerful citric acid cleaner **and/or** degreaser
- Keep the shine, ditch the grime
- Quick **and/or** easy cleaning for the holidays
- Quick cleaning so you can get back to [what matters][your family][doing][life]

NOTE: {Bold, italicized text and/or text in {braces} is information for the reader and is not part of the label.} [Bracketed information is optional text.] Highlighted text is new. Strike-through (text) means removed

- Clean fast, and get on with life
- A clean powered by plants, rooted in results
- Easy Breezy Cleaning
- Free and clear cleaning
- Worry free [cleaning]
- Clean powered by botanical actives [and essential oils]
- [Your favorite] plant based [cleaner][cleaning wipe]
- Multi-purpose cleaning formula suitable for: Bathrooms, Kitchens, Knobs & Switches, Toys, Phones & Remotes
- You can clean an entire [*insert option from table 3 or table 4*] with just [*insert number*] wipes[!]
- Clean **and/or** Destroy **and/or** Withstand **and/or** Remove the following [tough] [messes] [soils] [stains]
 - Food residue[s]
 - [Fruit] juice[s]
 - Condiment[s]/sauce[s] [stains]
 - Crumbs
 - Coffee [stains]
 - Particles
 - Blood
 - Laboratory stains
 - [Kitchen] grease
 - Grime
 - Fingerprints
 - Lotion
 - Oil[s]
 - Mud
 - [Soap] [scum]
 - Spill[s]
 - [Soft] drinks
 - Other common [soils] [stains] [messes]
- Clean **and/or** Remove the following pet [messes] [soils] [stains]
 - Hair
 - Fur
 - Fecal Matter
 - Urine

SURFACE COMPATIBILITY AND USAGE CLAIMS

- No haze
- [Virtually] [haze-free] [film-free] [shine] [clean]
- [Low-haze] [Low-Film] [No-Film] [Clear-Drying] [Formula] [Wipe] clean[s] thoroughly
- For plastic and painted surfaces, spot test on an inconspicuous area before use.
- [This product or product name] will not harm most surfaces: including acrylic, sealed fiberglass and vinyl.
- Do not use on unpainted wood.
- Note: Do not use on unpainted wood or natural marble or brass.
- For plastic and painted surfaces, spot test on an inconspicuous area before use.

NOTE: {Bold, italicized text and/or text in {braces} is information for the reader and is not part of the label.} [Bracketed information is optional text.] Highlighted text is new. Strike-through (text) means removed

- Will not damage hard, non[-]porous surfaces
- Dries clear on mirrors and glass
- No streak
- Streak free
- Dries clear
- Proven effective on most hard surfaces
- For daily use
- Low streak **and/or** residue
- Formula with [low] [less] [lower] [streaking][residue]
- Use where you live, work and play
- Won't dry out, damage, or fade car surfaces
- Easily keeps your [car][vehicle] clean
- [Virtually] no trace **or** film left behind
- Safe on **{list any approved surface in Table 4}**
- [Contains no abrasives][Non-abrasive]
- Cleans without bleaching
- Easy on surfaces
- When used as directed, this product is compatible to use on most surfaces.
- [Can be used] around pets
- When used as directed, suitable for use around [pets][cats and dogs]
- Good for use around cats and dogs
- Non-corrosive
- You can feel good about using this everywhere¹ - even around toys and pets!
- Can be applied to touchscreens, monitors and plexiglass type barriers. [Wipe dry after use to prevent any potential streaking.]

PACKAGING/MATERIAL CLAIMS

{The following packaging and material claims should only be used when applicable. Supplemental Registrant may be responsible for providing supporting documentation. For comparative packaging claims, a qualifier may be used for clarification.}

- Made from [x]% [recycled [plastic **or** materials]] [post-consumer resin **or** PCR]
- I'm refillable!
- I'm reusable!
- Aluminum is endlessly recyclable
- Over 75% of all aluminum ever produced is still used today
- Our [longest lasting **and/or** thickest] [disinfecting] wipe [ever]
- **For refill bags only:** [For use in][Drop/Place in] [**insert wipe dispenser name**][empty canister][wipe dispenser]
- Stackable [disinfecting][wipes][refills][packages][packs][pouches]
- [Meet] the scrubbing power/side of a sponge in a [disinfecting][cleaning] wipe
- [Use the][smooth **and/or** soft side for cleaning dirt away **and/or** disinfecting
- Thicker texture
- Dual sided [texture][wipe]
- Dual [action][use] wipe **or** cloth
- [Buy] [one/two] for home, one for [school] [the car] [the purse] [to go]
- Combo pack

NOTE: {Bold, italicized text and/or text in {braces} is information for the reader and is not part of the label.} [Bracketed information is optional text.] Highlighted text is new. Strike-through (text) means removed

- Refill pack
- [Convenient] [Size][and] [easy to use]
- [Easy] [Better] [New] [&] [Improved] [Dispensing] [Lid] [Closure]
- Easy-carry handle
- [Easy][Effortless] one hand cleaning
- Easy open lid
- Semi-rigid flap for a secure closure [with less plastic]
- Easy to carry
- Great for [on the go][travel][traveling][unexpected messes]
- Resistant to drying out
- Wipes stay moist **and/or** wet
- [Individual] [refills] [rolls] [package] [pouch] [stay[s]] [keep[s]] [moist] [fresh]
- [Stays moist for] No wasted wipes [!]
- [Now with][Built-in] [Micro] [tough] scrubbing fibers
- Disposable wipe
- Toss wipe after use
- [Advanced][Better][Stronger][Powerful] Texture **or** Cloth [for better cleaning]
- Less plastic for easier disposal
- Designed to look good [in your home][on your counter]
- Plant-based cloth
- Plant-based substrate
- Premium[, plant-based] cloth **{or}** substrate **{or}** fabric
- Designed to leave on the [kitchen] counter
- Leave me out on the counter [to make cleaning easier **and/or** more convenient]
- Resealable package/pouch/pack
- Snap and seal package/pouch/pack
- Stays wet **or** moist [better than ever before]
- Moisture lock cloth **or** wipe
- Scrubby texture
- Super scrubby [cloth][wipe]
- Wipes won't dry out²
- Wipes dispense one at a time [for less waste][for ease of use]
- [This] Packaging is plastic-free
- [The] Wipe is plastic-free
- [Economy] [value] refill
- Perfect size for [bathrooms] [kitchens] [your purse][your pocket].
- [X]% reduced plastic
- 100% [plant-based] Cotton Wipe fabric
- [Converted][Packaged] with [x%] [wind] [solar] energy
- [Made with] [x%] less plastic [than similar size containers][than previous[ly] used container[s]]
- Package is 100% recyclable
- Packaging contains [x%] [post-consumer waste] [recycled materials]
- [Substrate] [Wipe] [Towelette] [Cloth] composed of [x%] recycled renewable materials
- [Substrate] [Wipe] [Towelette] [Cloth] [material] derived 100% from [wood pulp] [cotton] [cellulose] [recycled cellulose]
- Wipe fabric made from [x]% renewable resources

NOTE: {Bold, italicized text and/or text in {braces} is information for the reader and is not part of the label.} [Bracketed information is optional text.] Highlighted text is new. Strike-through (text) means removed

- **Note: a representative graphic of the substrate may be used**

INGREDIENT CLAIMS

{Claims regarding fragrances should only be used when applicable}

- [Please visit our website (*insert url*) for more information on [ingredients][contents]]
- Non-corrosive ingredients
- Bleach Free
- Botanical
- Botanical Cleaning
- Botanical surface cleaner with natural essential oil[s]
- Botanical ingredient[s]
- Botanically derived ingredient[s]
- Botanical active ingredient
- Botanically derived [active ingredient][citric acid]
- [Botanically based] product]
- Plant-based [formula]
- [Effective] Plant-based cleaning power
- Dye free [formula]
- Bleach[-]free
- Paraben[-]free
- Phenol[-]free
- Free of glycol solvents
- Free of chlorine
- Free of gluten
- Free of phosphate
- Free from harsh [and abrasive] chemicals
- [Contains no][No] [Does not contain] [bleach,] [added dyes,] [added colors,] [perfumes,] [phosphates], [phosphorus], [chlorine bleach], [dyes], [synthetic fragrances,] [known or suspected endocrine disruptors,] [glycol ethers,][chlorinated compounds,] [or] [chlorine] [MIT][BIT]
- Does not contain [bleach] [chlorine]
- Does not contain [Triclosan] [Parabens]
- Made without Parabens and Phthalates
- [Free of][no] dye and/or perfumes
- Free of [glycol solvents] [chlorine] [gluten] [phosphate]
- No harsh chemical odors
- No artificial fragrance
- [Formulated][with][using] botanical actives [and essential oils]
- For ingredient information, go to (*insert url*)
- A list of [this product's] [product name] ingredients is available at [insert company website].
- [For more information][Visit our website][*company url*
- made] [formulated][using] [with] essential oils
- Effective botanical [formula][wipes]
- [Cleans] [disinfects] with [botanically-derived ingredients] [plant-based ingredients]
- [Contains][Includes] Biodegradable detergents
- The surfactants contained in this product are biodegradable. [Surfactants are cleaning agents]

NOTE: {Bold, italicized text and/or text in {braces} is information for the reader and is not part of the label.} [Bracketed information is optional text.] Highlighted text is new. Strike-through (text) means removed

- Fragrance free [formula]
- Plant-derived [citric acid][disinfectant][cleaner][cleaning power ingredient]
- Say goodbye to harsh chemical odors
- Botanical citric acid as the active ingredient
- Citric acid [derived] from plants
- [Free from][Contains no][Does not contain][fumes][bleach][gluten]
- Infused with [citric acid **and/or** plant based extracts]
- Lightly scented
- Light fragrance
- Made with plant-derived citric acid
- Won't leave greasy residue on hands
- With a bleach-free formula
- With a [pleasant][refreshing] fragrance **and/or** scent
- The smell of clean
- Beautifully fragranced with essential oils and other plant-derived ingredients
- Formulated without parabens, phthalates, bleach, dyes, and synthetic fragrance
- Fragrances are [100%] [plant-based][plant-derived][botanical][botanical extracts]
- [100%] [plant-based] [plant-derived][botanical][fragrance[s]]
- VOC Compliant
- No [bleach],[chlorine], [phosphates]
- Breathe Easy
- Non-corrosive to eyes and skin
- Non-sensitizing
- Not a skin sensitizer
- Non-chlorine [formula]. Will not bleach clothing or colored surfaces
- Nut Free
- Non-Irritating
- Non-corrosive
- Non-flammable
- No harsh fumes

MISCELLANEOUS CLAIMS

- Ready to Use
- We're here to help when life happens.
- Inspired by nature
- [Please rinse toys][Rinse toys with potable water]
- Rinse free [formula]⁴
- No Rinse⁴
- No Rinse Formula⁴
- Rinse Free Formula⁴
- No Rinse Disinfectant⁴
- [Can be used] around pets
- When used as directed, safe for use around [pets][cats and dogs]
- Good for use around cats and dogs
- Safely store out of reach of children
- Store safely out of reach of children

NOTE: {Bold, italicized text and/or text in {braces} is information for the reader and is not part of the label.} [Bracketed information is optional text.] Highlighted text is new. Strike-through (text) means removed

- Do not use as a diaper wipe or for personal cleansing.
- This is not a baby wipe[!]
- A trusted brand of [company name]
- The difference is on the label
- [Hey Mom] Take [**this product**][me]to my [classroom][school][teacher]
- Keep your home your sanctuary with our One-Step Disinfecting Wipes, made with botanical ingredients
- Commercial [product][disinfectant]

Following is for use only for 6 months after first date of sale. Statements can be combined. Exclamation points (!) can be included after statements.

- [Now]
- [New]
- [Re-design]
- [Improved][Better][Look][Packaging]

For all claims: Plural words can be listed in their singular form and singular words can be listed in their plural form.

NOTE: {Bold, italicized text and/or text in {braces} is information for the reader and is not part of the label.} [Bracketed information is optional text.] Highlighted text is new. Strike-through (text) means removed

TABLE 2: FRAGRANCE DESCRIPTORS

Note: each scent list in “Fragrance Descriptors” section may also be represented by a graphic depicting the corresponding scent, except when referring to an apple, peach, or pomegranate, in this case the graphic will be submitted to the Agency for review.

Various descriptors can be combined

Apple Blossoms	Cucumber Melon	Lemon Ginger Mint	Pleasant
Lemon Squeeze	Cucumber Sage	Lemon Ginger Reed	Pleasing
Almond Cream	Dye And Fragrance Free	Lemon Lime	Pomegranate
Apple	Essence	Lemon	Pomegranate Dragonfruit
Apple Orchard	Eucalyptus [Mint]	Lemon Verbena	Purple Wildflower
Arctic Breeze	Eucalyptus	Lemony	Refreshing
Aroma	[Floral] [Woods]	Lemon Ylang	Relaxing
Asian Pear	Fragrance	Lemon Ylang Flower	Ruby Red Grapefruit
Bamboo	Fragrance Free	Lemon Zest	Scent Free
Bold	Free And Clear	Light	Sage
Botanical	Fresh Citrus	Lime	Soothing
Bouquet	Fresh Citrus Sparkle	Lime Blossom	Spearmint
Bramley Apple Blossom	Fresh Meadows	Mandarin Green Tea	Spice
Cherry	Fresh Scent	Mandarin Mint	Strawberry
Citron	Fresh Squeezed	Matcha Fleur	Strong
Citrus	Fresh [listed Descriptor]	Mint	Sugared Lemon
Citrus Burst	Glacier Mint	Modern Citrus Lime	Summer Rain
Citrus Eucalyptus Sage	Good	Mountain Green	Sunshine Vetiver
Citrus Fresh	Great	Naked & Free	Sweet Pea
Citrus Splash	Green Tea Citrus	Ocean Breeze	Sweet Pea Bloom
Clean	Herbal	Odor	Tarocco Orange
Clean And Fresh	Honey Spiced Fig	Orange	Tropical
Clean Kitchen Lemon	Indian Mango Orange	Orange Fresh	Tropical Paradise
Clean Mint	Invigorating	Orange Mango	Unscented
Clean Sparkle	Island Coconut	Orange Mango Lily	Verbena Orange
Cleanmint	Island Springs	Orange Zest	Warm
Cool	Japanese Cherry Blossom	Outdoor Fresh	Waterfall Mist
Cool Mint	Lavender [& Eucalyptus]	Pacific Rose Apple	White Diamonds
Cotton Breeze	Lavender [& Cucumber]	Paradise Escape	Wild Lemon Ylang
Cotton Lily	Lavender + Sage	Peach	Wild Lime Verbena
Creamsicle	Lavender Lime	Pear	Wildflower
Crisp	Lavender Vanilla Orchid	Perfume	Winter Fresh
Crystal Clean	Lemon Bergamot	Pina Colada	Wintergreen
Crystal Mint	Lemon Breeze	Pine	Wintermint
[Cucumber] [Aloe]	Lemon Ginger	Pink Grapefruit	[scent[ed] insert after any listed descriptor

NOTE: *{Bold, italicized text and/or text in {braces} is information for the reader and is not part of the label.}* [Bracketed information is optional text.] Highlighted text is new. Strike-through (text) means removed

DIRECTIONS FOR USE: [Please read all directions carefully before using this product.] It is a violation of Federal Law to use this product in a manner inconsistent with its labeling.

[DISPENSER DIRECTIONS:]

[TO OPEN PACKAGE:]

{For canisters, tubs, or carton}

Option 1

[To start feed, remove large cover. Pull up the towelette corner from the center of the towelette roll, twist it into a point and thread it through the hole in the container cover. Pull through about one inch. Replace cover. Pull out first towelette and snap off at a 90° angle. Remaining towelettes feed automatically ready for their next use. When through using, keep small center cap closed to prevent moisture loss.]

Option 2

Open lid. Pull out wipe from center of roll and through lid. Close lid to retain moisture

Option 3

Remove cover. Pull up wipe corner from center of roll. Thread through hole in the cover. Replace cover. Open center cap on cover to remove wipe. When not using, close center cap securely to prevent moisture loss.

Option 4

Flip open lid. To remove first wipe, pull up on wipe and remove wipe through wavy dispensing opening. The next wipe will pop up automatically. Always snap lid securely between uses to retain moisture.

{For flat packs or soft packs}

[Flat Pack Opening instructions:]

Option 1

Slowly peel back label. Pull out wipes as needed. Reseal label to retain moisture.

Option 2

Slowly peel back [semi-rigid] flap. Pull out wipes as needed. Reseal/Close [semi-rigid] flap to retain moisture.

Option 3

[Open plastic lid.] Slowly peel back label. Pull out wipes as needed. [Reseal label to retain moisture.] [Close lid].

Option 4

Slowly open [semi-rigid] flap. Pull out wipes as needed. Reseal/Close [semi-rigid] flap to retain moisture.

Option 5

Peel and reseal here.

{For the single cloth sachet or sample pack}

Tear [pouch] open [at top edge of pouch] [at tear notch] [where indicated] [edge of pack]. [Pull out] [Remove] [Wipe] [Towelette] [Cloth]. [Unfold [Wipe] [Towelette] [Cloth]]

NOTE: {Bold, italicized text and/or text in {braces} is information for the reader and is not part of the label.} [Bracketed information is optional text.] Highlighted text is new. Strike-through (text) means removed

{For refill, pouch, or bag}
{required with Storage and Disposal instructions for refill packaging}
[Refill instructions:]

Option 1

Open pouch. [Place refill in] **or** [Insert wipes into] empty tub **or** dispenser **or** canister. Replace lid. Pull out wipes as needed. Close lid to retain moisture.

Option 2

1. Remove the lid from the empty tub **or** dispenser **or** canister.
2. Insert new roll of wipes
3. Replace lid [of tub **or** dispenser **or** canister]
4. [Dispense][Pull out] wipes as needed
5. Close lid to retain moisture

{Alternative directions for individual supplemental registrants in Appendix}

[TO [CLEAN]/[DEODORIZE]] [Cleaning Instructions] or [How to use]:

[Apply to surface[s] [as needed].][Wipe clean.]

[Unfold premoistened cloth and wipe area to be cleaned for 30 seconds or until clean.]

[Spot check to test for compatibility]

TO DISINFECT {or} Disinfecting Instructions:

[Product is ready to use.] Preclean areas with [gross filth and] visible soil prior to disinfection.

Option 1

[Unfold premoistened cloth and] Wipe hard non-porous area or item to be disinfected. Wet all surfaces thoroughly. The surface must remain visibly wet for at least **{or}** Leave wet for ***{insert contact time here^s}***. [Wipe or] Let air dry.

Option 2

Wet the hard, non-porous surface with the wipe. Allow surface to remain visibly wet for **{or}** Leave wet for ***{insert contact time here^s}***. Allow to air dry.

Option 3

Use to disinfect hard, nonporous areas. Wipe surface to be disinfected. Allow treated surface to remain visibly wet for **{or}** Leave wet for ***{insert contact time here^s}***.

Option 4 (for use in Bona mopping systems)

Remove, unfold the cleaning pad, place mop on top of [green][blue] fastening strips. To Disinfect: Mop [surface][desired area][with pad], ensuring surface remains wet for **{or}** Leave wet for ***{insert contact time here^s}***. Dispose after use, do not flush. [Do not follow the disinfect directions for an entire wood or laminate floor due to excess moisture being introduced, which could cause damage]

NOTE: {Bold, italicized text and/or text in {braces} is information for the reader and is not part of the label.} [Bracketed information is optional text.] Highlighted text is new. Strike-through (text) means removed

{NOTE: When food contact surfaces are listed, the following is REQUIRED:}

No rinsing or wiping is required except on food contact surfaces which require a potable water rinse after [use][treatment][disinfection]

{or}

Rinse all food contact surfaces with potable water after [use][treatment][disinfection]

{When only non-food contact surfaces are listed, the following is optional:}

[No rinsing or wiping is required.]

{The following is optional:}

[FUNGICIDAL DIRECTIONS]: This product is effective against *Trichophyton interdigitale* (athlete's foot fungus and a cause of ringworm) on inanimate surfaces [in locker rooms, dressing rooms, exercise facilities, and shower and bath areas]. [Follow disinfection directions.]

[Use contact time in accordance with listed organisms]

§{NOTE: State contact time in accordance with organisms listed on the distributed product label.}

NOTE: {Bold, italicized text and/or text in {braces} is information for the reader and is not part of the label.} [Bracketed information is optional text.] Highlighted text is new. Strike-through (text) means removed

Note for Tables 3 & 4: Plural use sites and areas can be listed in their singular form and singular use sites and areas can be listed in their plural form

TABLE 3: USAGE CLAIMS

[AREAS OF USE:]

[Suitable] [Intended] [for use] [on washable hard, nonporous surfaces of] [in]

[Graphic – depicting listed use areas]

[Air]plane Lavatories	Boats	Factories	Locker Rooms
[Damp] Storage Areas	Bookstores	Family Rooms	Long Term Care Facilities
[Diaper] changing areas	Bowling Alleys	Fast Food Restaurants	Lounges
[Elementary] Schools	Boxcars	Fire Trucks	Malls
[Mobile] Home	Break rooms	Fitness Centers	Manufacturing Plants
[Rental] Cars	Breeding and Grooming Establishments	Garages	Markets
[School] Buses	Buses	Gas Stations	Massage/Facial Salons
Acute Care Institutions	Butcher Shops	Gift Shops	Medical Offices
Airplanes	Cafeterias	Grocery Stores	Military Installations
	Campers	Grooming Facilities	Mobile Homes
Airports	Campgrounds	Gym[nasium]s	Motels
Alternate Care Institutions	Cars	Hair/Nail/Pedicure Salons	Motorboats
Ambulances	Central Service Areas	Health Care Facilities	Museums
Animal Care Facilities	Central Supply Rooms	Health Clubs	Neonatal Units
Animal Hospitals	Childcare Center[s]	Helicopters	Newborn Nurseries
Animal Labs	Children’s [Play]rooms	Hospices	Nurseries
Animal Life Science Laboratories	Churches	Hospitals	Nursing homes
Apartments	Classrooms	Hotels	Office Breakrooms
Art Galleries	Clinics	Household	Office Buildings
Athletic Facilities	Colleges	Household and Automotive Garages	Offices
Audiology areas	Commercial Building	Housekeeping & Janitorial Rooms	Orthopedic Clinics
Auto Repair Centers	Convenience Stores	Industrial Facilities	Performance / Theater Centers
	Correctional Facilities	Institutional facilities	Pet Animal Quarters
Automobiles	Day care centers	Institutional Kitchens	Pet Areas
Banks	Delivery Trucks	Institutions	Pet Shops
Barber/Beauty Shops	Dens	Jungle Gyms	Pharmacies
Barges	Dental offices	Kennels	Physician’s Offices
Bars	Department Stores	Kitchens	Picnic Facilities
Basements	Discount Retailers	Laboratories [or other small animal facilities]	Play Areas
Basements and crawl spaces	Dorms	Laundries	Play Rooms
Bathrooms	Elevators	Laundromats	Playgrounds
Bedrooms	Emergency Vehicles	Lavatories	Playpens
Bicycle Shops	EMS & Fire Facilities	Libraries	Police Cars
Blood Banks	Equine Farms	Living Areas	Post Offices
Blood Collection Rooms	Exam Rooms	Lobbies	Preschools

NOTE: {Bold, italicized text and/or text in {braces} is information for the reader and is not part of the label.} [Bracketed information is optional text.] Highlighted text is new. Strike-through (text) means removed

(continued)

TABLE 3: USAGE CLAIMS

[AREAS OF USE:]

[Suitable] [Intended] [for use] [on washable hard, nonporous surfaces of] [in]

[Graphic – depicting listed use areas]

Public Facilities	Sick Rooms	Warehouses
Public Restrooms	Spas	Washing Areas
Reception Areas	Sports Arenas	Watercraft
Recovery Rooms	Sports Complexes	Work Areas
Recreational Facilities	Subways	Work[places]
Rest Stops	Supermarkets	
Restaurants	Tankers	
Restrooms	Tanning Salons	
Retail [and] [Wholesale] [Food Stores] [Establishments]	Tanning Spas	
RVs	Taverns	
Salons	Taxis	
School Cafeterias	Telephone Booths	
School Foodservice	Trailers	
Schools	Trains	
Shelters	Trolleys	
Ships	Trucks	
Shopping Centers	Universities	
Shopping Malls	Vehicle [Interiors -and/or- Exteriors]	
Shops	Veterinary Clinics	
Shower [rooms]	Waiting Rooms	

NOTE: {Bold, italicized text and/or text in {braces} is information for the reader and is not part of the label.} [Bracketed information is optional text.] Highlighted text is new. Strike-through (text) means removed

TABLE 4: TYPES OF SURFACES/USE SITES

[Suitable] [Intended] [for use] [on] [the following]
 hard, nonporous surfaces **{or reference footnote “1”}**
 [Graphic – depicting listed surfaces]

[Air]plane Tray [Tables]	Cages	Exterior Surfaces of Urinals
[Bath]tubs	Car Interiors	External [Surfaces of] Ultrasound Transducers and Probes
[Bathroom] Mirrors	Carts	External Surfaces of [Medical] Equipment
[Bathroom][Kitchen] Faucets	Chairs	External Surfaces of Dialysis Machine
[Booster][Car] Seats	Changing tables	External Surfaces of Respiratory Equipment
[Cell] Phones	Children’s toys	Filing Cabinets
[Child] Strollers	Chrome	Finished Baseboard
[Children’s] Furniture		Fitness Center Equipment
[Clothes][Diaper] Hampers	Closets	Fixtures
[Conveyor][s] [Belt][s]	Coated Mattresses	Floors
[Diaper] Changing Tables	Coated Pillows	
[Fast Food] Restaurant Tables	Coils and drain pans ⁶ of HVAC & R equipment	Folding Tables
[Public] Pay Phones	Combs	Footbath Surfaces
[under] Sinks	Computer surfaces	Footboards
Ambulance patient care surfaces	Computers	Furniture
Anesthesia equipment surfaces	Consoles	Gaming Systems
Animal Equipment	Cooktops ⁵	Garage surfaces
Appliances ⁵	Cooler exteriors	Garbage cans
Audiology Equipment	Counters	Garbage disposals
Automatic Feeders	Countertops	Garbage/Trash Cans
Automobile Interiors	CPR manikins	Glass
Baby Rooms Furniture/Surfaces	Cribs	Glass tabletops
Baby/infant care surfaces	CT equipment/surfaces	Glazed [ceramic] [tile]
Backboards	Cup Holders	Glazed porcelain
Baked Enamel	Cupboards	Grocery Carts and Stores
Baseboards	Curing lights	
Bathing units	CuVerro® antimicrobial copper	Handrailings
Bathrooms [tubs] [tiles]	Dashboard	High Chairs
Beakers	Dental chairs	High Touch Surfaces
Bed railings	Dental equipment surfaces/devices	Highchairs
Bed Rails	Dental lamps	Immobilization devices
Bed Springs/Frames	Desks	Infant care equipment
Beds	Diagnostic Equipment	Isolettes
Benches	Diaper Pails	Keyboards
Bidets	Dining Room Tables	Kitchen appliances ⁵
Blinds	Door [frames][handles]	Kitchen[countertops][surfaces][Tables]
Blood pressure devices	Doorknobs	Laboratory equipment/surfaces
Boots	Drinking Fountains	Laminates
Breast pumps	Exam tables	Laptops
Brush Belts	Exercise equipment	Laundry Rooms
Brushes	Exercise Machines	Lawn Chairs
Buckets	Exterior Surfaces of Air Vents or	LCD Screens
Cabinets	Air Vent Exteriors	Lifts

NOTE: {Bold, italicized text and/or text in {braces} is information for the reader and is not part of the label.} [Bracketed information is optional text.] Highlighted text is new. Strike-through (text) means removed

(continued)

TABLE 4: TYPES OF SURFACES/USE SITES

[Suitable] [Intended] [for use] [on] [the following]
 hard, nonporous surfaces **{or reference footnote “1”}**
 [Graphic – depicting listed surfaces]

Light lens covers	Playground Equipment	Tanning Beds
Light Switches/Fixtures/Panels	Polyurethane	Tanning Equipment
Lights	Pool maintenance equipment	Telephones
Litter boxes	Porta-Potties	Tires
Lumens	PPE (Personal Protective Equipment)	Toilet Seats
	Radiology equipment surfaces	Toilets (rims, seats and exterior surfaces)
Medical equipment surfaces/devices		Tools
Metal	Reception Counters or Desks or Areas	tops
Mice/Mouse	Recycling Bins	Toys
Microscopes	Refrigerator Door Handles	Training tables
Microwaves (exterior surfaces)	Refrigerators (exterior surface) ⁵	Transportation equipment surfaces
Mirrors	Respirators	Trash Barrels
MRI equipment surfaces	Respiratory care equipment surfaces	Trash Cans
Navigation Screens	Scales	Trash Containers
Neck Braces	Scissors	Trays
Neonatal/nursery surfaces	Sealed Granite	
Nonporous [athletic][yoga] mats	Sealed marble	TV Remote [controls]
Obstacle Course Play and Exercise Equipment	Sealed quartz	Tweezers
Obstetrical equipment surfaces	Sealed stone	Ultrasonic Baths
Operating room lights/tables	Shoes	Ultrasound devices
Ophthalmic equipment surfaces/devices	Shopping carts	Unit Stools
Optical wear (excluding contact lenses)	Shower doors	Urinals (external surfaces or above the water line)
Outdoor Areas and Furniture	Shower floors/walls	Vanities
Oxygen hoods	Shower Stalls	Vending Machine
Paper Towel Dispensers	Signs	Vinyl
Patient bed surfaces	Skin care equipment/surfaces	Vinyl [upholstery][wallpaper]
Patient stretchers	Slides	Walkers
Patient transport surfaces	Slit Lamps	Walkways
Patio Furniture	Smart Phones/Watches	Walls
Patio furniture	Smart Screens	Washable Nail Files
Pedicure Basins	Smokers	Washable Walls
Pens	Soaking containers	Washing Machines
Pet Habitats	Soap dispensers	Washing machines
Pet Soiled Surfaces	Stainless Steel	Wastebaskets
Pet toys	Stalls	Wheelchairs
Petri dishes	Steps, Plumbing Fixtures	Whirlpool Bathtubs
Physical therapy equipment	Storage bins	Whirlpool Foot Spas
Piano keys	Stovetops (exterior surfaces) ⁵	Whirlpool Surfaces
Picnic Tables	Strollers	Whirlpools
Pipeless Foot Spas	Surgical equipment surfaces	Windows
Pipes	Surgical microscopes	Windowsills
Plastic	Tables	Work stations
Play mats	Tablets	Wrestling mats
Play-care equipment		X-ray equipment/surfaces

NOTE: {Bold, italicized text and/or text in {braces} is information for the reader and is not part of the label.} [Bracketed information is optional text.] Highlighted text is new. Strike-through (text) means removed

{Note to Reviewer: Emerging Viral Pathogen claims shall be made only through the following communications outlets: technical literature distributed exclusively to health care facilities, physicians, nurses and public health officials, "1-800" consumer information services, social media sites and company websites (non-label related). These statements shall not appear on marketed (final print) product labels.}

EMERGING VIRAL PATHOGENS

This product meets the criteria to make claims against certain emerging viral pathogens from the following viral category[ies]:

- Enveloped virus
- Large non-enveloped virus
- Small, non-enveloped virus

For an emerging viral pathogen that is a/an...	...follow the direction for use for the following organisms on the label:
Enveloped virus	Rhinovirus Type 14 Strain 1059
Large, non-enveloped virus	Rhinovirus Type 14 Strain 1059
Small, non-enveloped virus	Feline Calicivirus [surrogate for Norovirus] Rhinovirus Type 14 Strain 1059

Statements shall adhere to one of the following formats:

1. [Product name] has demonstrated effectiveness against viruses similar to [name of emerging virus] on hard, non-porous surfaces. Therefore, [product name] can be used against [name of emerging virus] when used in accordance with the directions for use against Rhinovirus Type 14 [and/or] Feline Calicivirus [surrogate for Norovirus] on hard, non-porous surfaces. Refer to the [CDC or OIE] website at [pathogen-specific website address] for additional information.
2. [Name of illness/outbreak] is caused by [name of emerging virus]. [Product name] kills similar viruses and therefore can be used against [name of emerging virus] when used in accordance with the directions for use against Rhinovirus Type 14 [and/or] Feline Calicivirus [surrogate for Norovirus] on hard, non-porous surfaces. Refer to the [CDC or OIE] website at [website address] for additional information.

NOTE: *{Bold, italicized text and/or text in {braces} is information for the reader and is not part of the label.}* [Bracketed information is optional text.] Highlighted text is new. Strike-through (text) means removed

Note for reviewer: *For labels that list medical premises and metal and / or stainless steel surfaces, one of the following statements must be used, as required by PR 94-4 . Otherwise, the all language on this page is OPTIONAL.*

DECONTAMINATION OF CRITICAL OR SEMI-CRITICAL DEVICES PRIOR TO TERMINAL STERILIZATION/HIGH LEVEL DISINFECTION: This product is not to be used as a terminal sterilant/high level disinfectant on any surface or instrument that [1] is introduced directly into the human body, either into or in contact with the bloodstream or normally sterile areas of the body, or, [2] contacts intact mucous membranes but which does not ordinarily penetrate the blood barrier or otherwise enter normally sterile areas of the body. This product may be used to preclean or decontaminate critical or semi-critical medical devices prior to sterilization or high-level disinfection.

Or

This product is not for use on medical device surfaces.

The following special instructions must be included on the label if the product is used as a hospital disinfectant rather than retail/household.

***[THIS PRODUCT] KILLS HIV ON PRE-CLEANED ENVIRONMENTAL SURFACES/OBJECTS PREVIOUSLY SOILED WITH BLOOD/BODY FLUIDS** in all settings in which there is an expected likelihood of soiling of hard, non-porous surfaces/objects with blood or body fluids and in which the surfaces/objects likely to be soiled with blood or body fluids can be associated with the potential for transmission of human immunodeficiency virus Type 1 [HIV-1] [associated with AIDS virus].

SPECIAL INSTRUCTIONS FOR CLEANING AND DECONTAMINATING SURFACES/OBJECTS SOILED WITH BLOOD AND BODY FLUIDS WHICH MAY CONTAIN HIV-1 [AIDS virus].

PERSONAL PROTECTION: When handling objects soiled with blood or body fluids use disposable latex gloves, gowns, mask and eye coverings.

CLEANING PROCEDURE: Blood and other body fluids must be thoroughly cleaned from surfaces and objects before application of the disinfectant.

CONTACT TIME: Do Not Dilute. Precleaned surfaces must remain visibly wet for one minute using mop, cloth or sponge to mitigate HIV-1 virus. Use a *{insert longest listed contact time on label}* minute contact time to kill all bacteria, viruses* and fungi listed on the label. *{List contact time in accordance with organisms listed on the distributed product label.}*

DISPOSAL OF INFECTIOUS MATERIAL: Blood and other fluids should be autoclaved and disposed of according to Federal, State and Local regulations for infectious waste disposal.

FOOTNOTES:

**{list specific viruses or link to virus list}*

‡{list or link to specific cold and flu viruses}

¹on hard, non-porous surfaces

²when used according to disinfection directions *{or link to disinfection directions}*

³*Pseudomonas aeruginosa, Salmonella enterica, Staphylococcus aureus, [insert any virus from list][insert additional viruses/bacteria as desired]*

⁴Except on food contact surfaces which require potable water rinse

⁵Allow surface to come to room temperature prior to treatment

⁶ Drain pans must be pre-cleaned and dry before applying this product

NOTE: {Bold, italicized text and/or text in {braces} is information for the reader and is not part of the label.} [Bracketed information is optional text.] Highlighted text is new. Strike-through (text) means removed

**APPENDIX 1:
THE FOLLOWING OPTIONAL LANGUAGE AND
GRAPHICS ARE AVAILABLE FOR USE BY
APPROVED SUBREGISTRANTS**

NOTE: {Bold, italicized text and/or text in {braces} is information for the reader and is not part of the label.} [Bracketed information is optional text.] Highlighted text is new. Strike-through (text) means removed

The following statement is required when registering product as Designed for the Environment:

For ingredient information, go to [www.wexfordlabs.com/DfE/wipes.html]

or

A list of [this product's] [product name] ingredients is available at [insert company website].

or

[For more information][Visit our website][[company url](#)]



NOTE: {Bold, italicized text and/or text in {braces} is information for the reader and is not part of the label.} [Bracketed information is optional text.] Highlighted text is new. Strike-through (text) means removed

For Home Made Simple

[company logo]

Make It Simple. Make It Home. Make It You.



It's been our mission since 2003 to help families create homes they love to live in. That's why we've crafted a line of plant-based cleaning products that really work. Simply what you need to build your happy, healthy home that reflects who you are and helps you take care of it too.



Alternate Dispenser Instructions

TO OPEN PACKAGE: Open the lid and pull up wipe from center of the roll. Feed wipe through guide pulling it through to next perforation. The next wipe will pop up automatically. Always close lid securely between uses to retain moisture.

For Earth Friendly Products

[company logo]

See the Clean.
Feel the Love.™



**MAJORITY
WOMEN
OWNED**



Safeguard your home with the entire line of ECOS® cleaning products at ecos.com.

NOTE: {Bold, italicized text and/or text in {braces} is information for the reader and is not part of the label.} [Bracketed information is optional text.] Highlighted text is new. Strike-through (text) means removed

For Lemi Shine
Alternate Dispenser Instructions



[Flip open lid. To remove first wipe pull up on wipe and remove wipe through wavy dispensing opening. The next wipe will pop up automatically. Always snap lid securely between uses to retain moisture.]



*Lemi Shine (Supplemental Registrant)
Company Logo*



NOTE: {Bold, italicized text and/or text in {braces} is information for the reader and is not part of the label.} [Bracketed information is optional text.] Highlighted text is new. Strike-through (text) means removed

For Full Circle

- Purchase refills online at byforgood.com
- By choosing a refillable product, you're minimizing your plastic footprint
- Instagram: [@byforgood](https://www.instagram.com/byforgood)
- Facebook: [@byforgood](https://www.facebook.com/byforgood)
- We believe in doing good, feeling good, for: good. Your support allows us to make life better for those who deserve it.
- In addition to providing essentials to those in need, we will also be donating a percentage of our proceeds to a community-driven nonprofit.
- Each quarter, for: good donates a percentage of proceeds to a selected nonprofit. We see the need in communities across the US, and we believe we can amplify good by expanding our reach across nonprofits in multiple sectors.
- Additionally, we provide PPE and other essentials to our partner organizations so that no need goes unmet.



for: good

NOTE: {Bold, italicized text and/or text in {braces} is information for the reader and is not part of the label.} [Bracketed information is optional text.] Highlighted text is new. Strike-through (text) means removed

For Bona

[company logo]

- For use on unwaxed, polyurethane finished wood, ceramic tile with sealed grout lines, sealed granite, or laminate flooring
- Treating spots, spills or small areas will minimize the risk of water damage.
- Regular cleaning with the Bona family of Floor Cleaners is safe for all urethane finished hardwood and sealed hard-surface floors.
- Just mop and toss!
- GENERAL INFORMATION: Have the product container or label with you when calling a poison control center or doctor or going for treatment. For non-emergency and general information on product use, etc., information pertaining to this product, call the National Pesticides Information Center at 1-800-858-7378 (NPIC web site: www.npic.orst.edu). For emergencies, call the poison control center 1-800-222-1222.
- STORAGE AND DISPOSAL: Store in original container, in a cool and well-ventilated area, inaccessible to children. Do not leave container open during storage. To avoid waste, use all material in this container according to label directions. Do not reuse this container for any other purpose. Do not reuse or refill this container. Discard in trash or offer for recycling if available.
- A Bona system™ Cleaning Pad
- Disposable Wet Cleaning Pads for Hard Surface Floors
- Use of this product on unsealed surfaces may cause staining. Do not use on unfinished, oiled or waxed wood floors, non-sealed tiles, carpet floor, or marble.

1
Remove, unfold the cleaning pad, place mop on top of blue fastening strips
Quitar, desplegar el paño de limpieza colocar trapeador encima de las tiras azules de fijación

2
Mop
Fregar

3
Dispose after use, do not flush
Deseche después de usar, no los deseche en el inodoro.

1
Remove, unfold the cleaning pad, place mop on top of green fastening strips
Quitar, desplegar el paño de limpieza, colocar trapeador encima de las tiras verdes de fijación

2
Mop
Fregar

3
Dispose after use, do not flush
Deseche después de usar, no los deseche en el inodoro.



Revive, Restore or Refinish™ your hardwood floors using a Bona Certified Craftsman®. Find a hand-picked professional at Bona.com.

NOTE: {Bold, italicized text and/or text in {braces} is information for the reader and is not part of the label.} [Bracketed information is optional text.] Highlighted text is new. Strike-through (text) means removed



Made in USA with Pride logo™ is a trademark of U.S. Nonwovens Corp. All rights reserved.





It part of the
ans removed



100% Guaranteed
 We're committed to providing premium quality products at an exceptional value. If you're not completely satisfied we'll refund your money.

100% Garantizado
 Estamos comprometidos a ofrecer productos de alta calidad a un valor excepcional. Si no está completamente satisfecho, le devolveremos su dinero.

100% Guaranteed
 We're committed to providing premium quality products at an exceptional value. If you're not completely satisfied we'll refund your money.

100% Garantizado
 Estamos comprometidos a ofrecer productos de alta calidad a un valor excepcional. Si no está completamente satisfecho, le devolveremos su dinero.

MEMBER'S SELECTION®

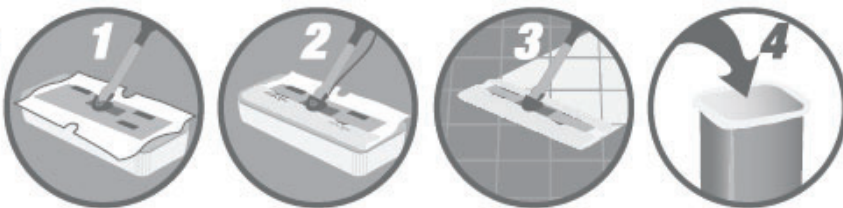
100% Guaranteed
 We're committed to providing premium quality products at an exceptional value. If you're not completely satisfied we'll refund your money.

100% Garantizado
 Estamos comprometidos a ofrecer productos de alta calidad a un valor excepcional. Si no está completamente satisfecho, le devolveremos su dinero.



NOTE: {Bold, italicized text and/or text in {braces} is information for the reader and is not part of the label.} [Bracketed information is optional text.] Highlighted text is new. Strike-through (text) means removed

Use on
mop
head.



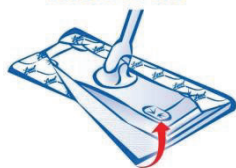
TO OPEN:

1. Cut off top of pouch with scissors.
2. Remove wipes from pouch.
3. Place wipes in plastic tub.
4. Discard empty pouch into trash.

TO USE WITH MOP:

1. Unfold top wipe in tub by pulling sides of the cloth over edges of tub.
2. Place sweeper on head.
3. Wrap wipe around head of sweeper.
4. Push edges of wipe into top of sweeper head.
5. Begin wiping. No rinsing required.
6. After use, remove soiled wipe and discard in trash. Do not flush.

Tuck & Go

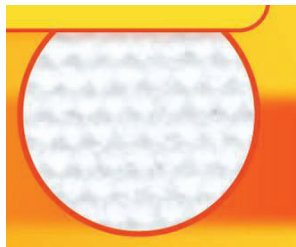
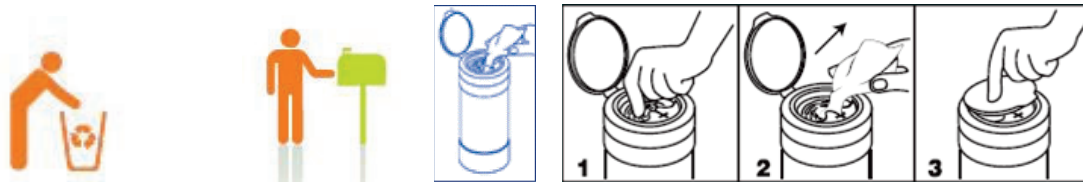


Note to reviewer: Representative graphic of wipe tub and/or hand pulling out wipe fabric may be added to the final printed label.

Note to reviewer: A representative graphic of a substrate may be added to the label. Only a graphic of the substrate actually in the canister can be added to the final printed label.



NOTE: {Bold, italicized text and/or text in {braces} is information for the reader and is not part of the label.} [Bracketed information is optional text.] Highlighted text is new. Strike-through (text) means removed



{Note to reviewer: the graphic to the left denotes a picture of a substrate. It will only be added to the final printed label if this substrate is actually in the canister can.}



[Do Not Flush]



TO OPEN PACKAGE:

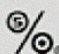
- Flip open dispensing cap and remove entire lid from canister by lifting upward.
- Locate wipe at center of roll, twist corner to a point and thread through small opening in lid. **DO NOT PUSH FINGER THROUGH OPENING.**
- Replace lid and pull sheet up at an angle. Remaining wipes feed automatically.
- When finished, snap lid cap shut to retain moisture.

NOTE: {Bold, italicized text and/or text in {braces} is information for the reader and is not part of the label.} [Bracketed information is optional text.] Highlighted text is new. Strike-through (text) means removed



[graphic depicting outdoor fresh scent]



	We Promise to make good products at good prices for good people. Enjoy!
	Thank You Target gives 5% of its income to the community to support education, the arts, social services and volunteerism.



- ✓ item replaced
- ✓ money refunded

NOTE: {**Bold, italicized text and/or text in {braces}**} is information for the reader and is not part of the label.} [Bracketed information is optional text.] Highlighted text is new. Strike-through (text) means removed



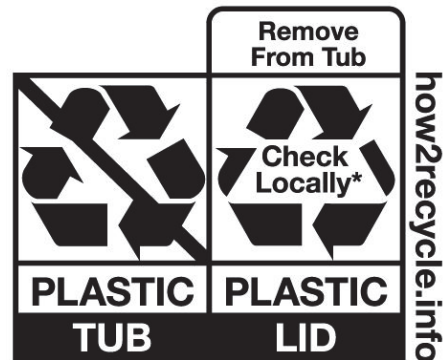
NOTE: {Bold, italicized text and/or text in {braces} is information for the reader and is not part of the label.} [Bracketed information is optional text.] Highlighted text is new. Strike-through (text) means removed



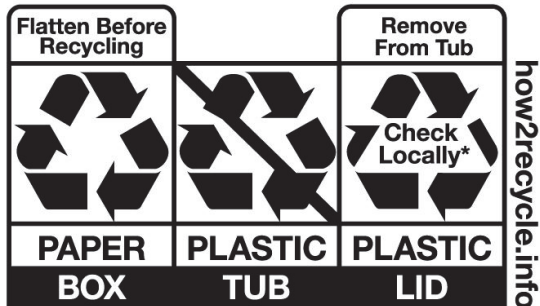
[company logo]



[company logo]



*Not recycled in all communities



*Not recycled in all communities

NOTE: {Bold, italicized text and/or text in {braces} is information for the reader and is not part of the label.} [Bracketed information is optional text.] Highlighted text is new. Strike-through (text) means removed



More cleaning and laundry products at BOULDERCLEAN.COM



^Note to reviewer: Text in graphic states: "Eliminates Odors. Cleans Everyday Kitchen Messes"



NOTE: {Bold, italicized text and/or text in {braces} is information for the reader and is not part of the label.} [Bracketed information is optional text.] Highlighted text is new. Strike-through (text) means removed



[NSF Listing D2][Product Category: D2]
[PRODUCT CATEGORY DEFINITION: D2-
Antimicrobial agents not requiring rinse]
**{Must have certification to use this logo,
this logo can also be in Black or White}**

{required text with USDA Biobased Certification}

This certification represents the liquid formulation and does not include biobased percentage of wipe substrate.
Disclaimer: This mark is not an indication of safety. Read and follow all label instructions.

***{PRODUCT:76%,
Must have certification to use this logo,
this logo can also be in Black or White}
{Listed percentage as appropriate can be updated with formal USDA certification/letter}***



[Instagram]

[Facebook]

[Twitter]

can be displayed in black/white



NOTE: {Bold, italicized text and/or text in {braces} is information for the reader and is not part of the label.} [Bracketed information is optional text.] Highlighted text is new. Strike-through (text) means removed

{Note: These are representative graphics may appear on the label with the appropriate directions for use, PPE, or package type.}

- [Picture of Carpet Cleaning Machine]
- [Picture of Mop and Bucket]
- [Picture of Hand and Spray Bottle]
- [Picture of Hand and Towel]
- [Picture of Toilet Brush]
- [Baby Drowning in Bucket Warning Graphic]
- [Recycling Logo]
- [Made in USA Logo/Flag]
- [DO NOT FLUSH warning / graphic]

{Note: The following may be used only if the supplemental registrant has obtained certification. Allowed on back or side panel only.}

- [Halal Logo]
- [Kosher Logo]
- [NSF Logo]



Certified B Corp logos can be displayed in various colors. These logos are only acceptable for companies that hold certification

NOTE: {Bold, italicized text and/or text in {braces} is information for the reader and is not part of the label.} [Bracketed information is optional text.] Highlighted text is new. Strike-through (text) means removed

9 Elements Addendum – For 9 Elements use only



NOTE: {Bold, italicized text and/or text in {braces} is information for the reader and is not part of the label.} [Bracketed information is optional text.] Highlighted text is new. Strike-through (text) means removed

- ANTIBACTERIAL MULTI-PURPOSE CLEANER
- CITRUS BASED DISINFECTANT
- NO RINSE REQUIRED⁴
- CITRUS POWERED [CLEAN] [FORMULA]
- CITRUS BASED [CLEAN] [FORMULA]
- LIMITED INGREDIENT[S] [FORMULA] [DISINFECTANT] [DISINFECTING CLEANER]
- SIMPLE INGREDIENT DISINFECTANT
- SIMPLE INGREDIENTS, EFFECTIVE CLEAN
- LEMON SCENT
- KILLS 99.9% OF BACTERIA & VIRUSES*, INCLUDING FLU VIRUS
- Kills 99.9% of bacteria & viruses, including Influenza A virus, Salmonella enterica, Staphylococcus aureus, Rhinovirus, Escherichia coli
- NO Phosphates
- Say goodbye to a long list of ingredients
- FOR USE ON HARD, NON-POROUS SURFACES
- [Safe] [For use] on hard, non-porous surfaces
- Do not use on porous surfaces [like marble and limestone]
- Not for use on porous surfaces [like marble and limestone]
- Can be used on [sealed stone surfaces], [sealed stone] [sealed] [granite], [marble], [quartz]
- For use [even] around [toys and] [pets]
- You can [even] use it in the kid's play room
- [Gentle enough] for use where your [pets] [children] [cats and dogs] play
- [Gentle enough] for use in [pet] [kid] [children's] [children] [cat and dog] spaces [without a rinse⁴] [without rinsing⁴]
- For use around people and pets [when used as directed]
- [When used as directed] safe for use around people and pets
- Fight haze
- Fight streaks
- [Designed to be] gentle on [sensitive] skin during the application of the product on hard nonporous surface
- QUESTIONS? 1-877-267-0514
- © 2021 P&G
- Distr. by PROCTER & GAMBLE, 1 P&G PLAZA, CINCINNATI, OH 45202-3393
- THANK YOU FOR CHOOSING 9 ELEMENTS
- See [cap], [top], [side], [back] [panel] [for] [more information], [for info], [for details];
- [value] [triple] [double] [multi] [2] [3] [4] pack
- Scent made with [100%] essential oils.
- Plant based^[†],
- Botanical^[†]
- Botanical Cleaning^[†]
- Botanical surface cleaner with natural essential oil[s]^[†]
- Botanical ingredient[s]^[†]
- Botanically derived ingredient[s]^[†]
- Botanical active ingredient^[††]
- Botanically derived [active ingredient][citric acid]^[††]
- [Botanically based] product^[†]
- Plant-based [formula]^[†]
- [Effective] Plant-based cleaning power^[†]
- [Formulated][with][using] botanical actives^[††] [and essential oils]
- Plant-derived [citric acid^[††]][disinfectant^[†]][cleaner^[†]][cleaning power active ingredient^[††]

{Note to reviewer: All plant-based claims on this document will be associated with the below statement/disclaimer when used with 9Element Brands}

NOTE: {Bold, italicized text and/or text in {braces} is information for the reader and is not part of the label.} [Bracketed information is optional text.] Highlighted text is new. Strike-through (text) means removed

†[At least 76% of ingredients are plant derived and subjected to processing] **{or}** [Botanical or plant based means 76% of ingredients are plant derived and subjected to processing]

††Citric Acid is [100% plant derived] [produced by the bacterial fermentation of sugars and other carbohydrates]

FRAGRANCE DESCRIPTORS (cont. from Table 2)

{Note to reviewer: each scent list in “Fragrance Descriptors” section may also be represented by a graphic depicting the corresponding scent.}

{Various descriptors can be combined}

Lemon Scent
Blue Lavender & Chamomile
Eucalyptus Mint Dew
Sunny Orange
Citrus Limon (Lemon) Peel Oil
[100%] essential oil scent
Lavandula Angustifolia (Lavender) Oil