



UNITED STATES ENVIRONMENTAL PROTECTION AGENCY  
WASHINGTON, DC 20460

OFFICE OF CHEMICAL SAFETY  
AND POLLUTION PREVENTION

February 16, 2021

Catherine Kickham  
Wexford Labs  
325 Leffingwell Avenue  
St. Louis, MO 63122

Subject: PRIA Label Amendment – Adding Human Coronavirus and Rhinovirus  
Product Name: Wexford Disinfectant Wipes  
EPA Registration Number: 34810-37  
Application Date: 10/06/2020  
Decision Number: 566853

Dear Ms. Kickham:

The amended label referred to above, submitted in connection with registration under the Federal Insecticide, Fungicide and Rodenticide Act, as amended, is acceptable. This approval does not affect any conditions that were previously imposed on this registration. You continue to be subject to existing conditions on your registration and any deadlines connected with them.

A stamped copy of your labeling is enclosed for your records. This labeling supersedes all previously accepted labeling. You must submit one copy of the final printed labeling before you release the product for shipment with the new labeling. In accordance with 40 CFR 152.130(c), you may distribute or sell this product under the previously approved labeling for 18 months from the date of this letter. After 18 months, you may only distribute or sell this product if it bears this new revised labeling or subsequently approved labeling. "To distribute or sell" is defined under FIFRA section 2(gg) and its implementing regulation at 40 CFR 152.3.

Because you have opted to add statements pertaining to emerging viral pathogens to your label as described in the August 19, 2016, Guidance to Registrants: Process For Making Claims Against Emerging Viral Pathogens Not On EPA-Registered Disinfectant Labels ("Guidance"), [https://www.epa.gov/sites/production/files/2016-09/documents/emerging\\_viral\\_pathogen\\_program\\_guidance\\_final\\_8\\_19\\_16\\_001\\_0.pdf](https://www.epa.gov/sites/production/files/2016-09/documents/emerging_viral_pathogen_program_guidance_final_8_19_16_001_0.pdf), you are subject to the following additional terms of registration:

1. You may make statements pertaining to emerging viral pathogens only through the following communications outlets: technical literature distributed exclusively to health care facilities, physicians, nurses and public health officials, "1-800" consumer information services, social media sites and company websites (non-label related). These statements shall not appear on marketed (final print) product labels.

2. Your statements pertaining to emerging viral pathogens must adhere to the format approved on the Agency-accepted master label.
3. You may make statements pertaining to emerging viral pathogens only upon a disease outbreak that meets all the following criteria:
  - a. The causative organism must be a virus that causes an infectious disease that has appeared in a human or animal population in the U.S. for the first time, or that may have existed previously but is rapidly increasing in incidence or geographic range.
    - i. For human disease, the outbreak is listed in one of the following Centers for Disease Control (CDC) publications:
      - A. CDC Current Outbreak List for “U.S. Based Outbreaks” ([www.cdc.gov/outbreaks](http://www.cdc.gov/outbreaks)),
      - B. CDC Current Outbreak List for “Outbreaks Affecting International Travelers” with an “Alert” or “Advisory” classification ([www.cdc.gov/outbreaks](http://www.cdc.gov/outbreaks)) (also released through the CDC’s Health Alert Network (HAN) notification process)
      - C. Healthcare-Associated Infections (HAIs) Outbreaks and Patient Notifications page ([www.cdc.gov/hai/outbreaks](http://www.cdc.gov/hai/outbreaks))
    - ii. For animal disease, the outbreak is identified as an infectious disease outbreak in animals within the U.S. on the World Organization for Animal Health (OIE) Weekly Disease Information page ([www.oie.int/wahis\\_2/public/wahid.php/Diseaseinformation/WI](http://www.oie.int/wahis_2/public/wahid.php/Diseaseinformation/WI)).
      - A. The CDC or OIE has identified the taxonomy, including the viral family and/or species, of the pathogen and provides notice to the public of the identity of the emerging virus that is responsible for an infectious disease outbreak. Based on the taxonomy of the outbreak pathogen identified by the CDC or OEI, the pathogen's viral subgroup is (small non-enveloped, large non-enveloped, enveloped).
      - B. The virus can be transmitted via environmental surfaces (non-vector transmission), and environmental surface disinfection has been recommended by the CDC, OIE or EPA to control the spread of the pathogen.
4. You may begin communicating statements pertaining to emerging viral pathogens only upon CDC or OIE’s publication per term 3.a. of an outbreak of an emerging viral pathogen meeting all of the criteria of term 3. You must cease and remove all such non-label communications intended for consumers no later than 24 months after the original publication of the outbreak per term 3.a., unless the Agency issue written guidance to the contrary due to continued public health concerns. The emerging pathogen claim language may remain on the master label.

5. Terms from points 1 through 4 above shall become immediately void and ineffective if registration for use against (identify label viruse(s)) is suspended or cancelled or no longer meets the criteria for a disinfectant claim (see EPA Product Performance Test Guideline 810.2200). In addition, terms B.1 through B.4 above shall become immediately void and ineffective upon your receipt of evidence of ineffectiveness against any pathogen in a less-resistant Spaulding category.

Should you wish to add/retain a reference to the company's website on your label, then please be aware that the website becomes labeling under the Federal Insecticide Fungicide and Rodenticide Act and is subject to review by the Agency. If the website is false or misleading, the product would be misbranded and unlawful to sell or distribute under FIFRA section 12(a)(1)(E). 40 CFR 156.10(a)(5) lists examples of statements EPA may consider false or misleading. In addition, regardless of whether a website is referenced on your product's label, claims made on the website may not substantially differ from those claims approved through the registration process. Therefore, should the Agency find or if it is brought to our attention that a website contains false or misleading statements or claims substantially differing from the EPA approved registration, the website will be referred to the EPA's Office of Enforcement and Assurance.

Your release for shipment of the product constitutes acceptance of these conditions. If these conditions are not complied with, the registration will be subject to cancellation in accordance with FIFRA section 6. If you have any questions, please contact Stacey Grigsby via phone at 703.305.6440, or via email at [grigsby.stacey@epa.gov](mailto:grigsby.stacey@epa.gov).

Sincerely,



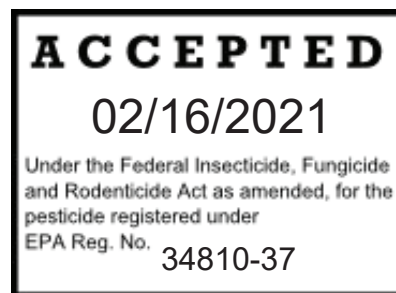
Jacqueline Hardy, Product Manager 34  
Regulatory Management Branch 2  
Antimicrobials Division (7510P)

Enclosures  
2/16/2021 Accepted Stamped Label  
2/10/2021 Efficacy Data Evaluation Review

***Bold, italicized text is information for the reader and is not part of the label.*** [Bracketed information is optional text.] Highlighted text is new. Strike-through (text) means removed

## WEXFORD DISINFECTANT WIPES

ACTIVE INGREDIENT:	
Citric Acid .....	0.60%
OTHER INGREDIENTS: .....	<u>99.40%</u>
[Includes biodegradable detergents]	
TOTAL	100.00%



**KEEP OUT OF REACH OF CHILDREN**  
**[CAUTION]**

[See [left] [side] [right] [back] [bottom] panel for Precautionary Statements and First Aid]

**[PRECAUTIONARY STATEMENTS]**  
**[HAZARD TO HUMANS AND DOMESTIC ANIMALS]**

**[CAUTION:** Causes moderate eye irritation. Avoid contact with eyes or clothing. Wash thoroughly with soap and water after handling and before eating, drinking, chewing gum, using tobacco, or using the toilet.]

**[FIRST AID]**

**[IF IN EYES or IN CASE OF EYE CONTACT:** Hold eyelids open and flush with a steady, gentle stream of water for 15 minutes. Remove contact lenses, if present, after the first five minutes, then continue rinsing. Call a Poison Control Center or doctor for further treatment advice.]

Net Contents \_\_\_\_\_

***Listed in pounds and ounces***

***Optional***

[X [Pre-moistened ***or*** Wet][Wipes ***or*** Towelettes]] [(X) x (X)]  
***(e.g. 100 Pre- moistened Towelettes 7"x 8")***

[Barcode] [DOT Symbols] [QR Code]

[Country of origin (insert country)] [Manufactured/Made in (insert country)]

EPA Reg. No. 34810-37

EPA Est. No. *[insert Est. No. here]*

[Beginning of Lot Code indicates EPA Est. No.]

[SDS #: *[insert SDS number here]*]

[Reorder #: *[insert reorder number here]*]

**Wexford Labs, Inc. 325 Leffingwell Avenue Kirkwood, Missouri 63122**

***Bold, italicized text is information for the reader and is not part of the label.*** [Bracketed information is optional text.] Highlighted text is new. Strike-through (text) means removed

**TABLE 1: LIST OF ORGANISMS THAT MAY BE INCLUDED ON LABEL**

<b>[BACTERICIDAL]</b> [Bactericidal [Activity]][In the presence of 5 % blood serum,] [is effective against]	<b>ATCC and/or Strain</b>
<b><i>5 minutes</i></b>	
Carbapenem-resistant Klebsiella pneumoniae	[ATCC BAA-1705]
Enterococcus faecalis Vancomycin Resistant [(VRE)]	[ATCC 51575]
Escherichia coli [O157:H7] [(E. coli)]	[ATCC 43888]
Listeria monocytogenes	[ATCC 19117]
Pseudomonas aeruginosa [P. aeruginosa]	[ATCC 15442]
Salmonella enterica [(formerly Salmonella Choleraesuis)]	[ATCC 10708]
Staphylococcus aureus [(S. aureus)][(Staph)]	[ATCC 6538]
Staphylococcus aureus - MRSA	[ATCC 33592]
Staphylococcus epidermidis - MRSE	[ATCC 51625]
<b><i>10 minutes</i></b>	
Acinetobacter baumannii	[ATCC 19606]
<b>[VIRUCIDAL*]</b> [In the presence of 5 % blood serum,] [is effective against]	<b>ATCC and/or Strain</b>
<b><i>3 minutes</i></b>	
Hepatitis B Virus [HBV], [Duck Hepatitis B (DHBV) as surrogate]	[Grimaud Strain]
Hepatitis C Virus [HCV], [Bovine Viral Diarrhea Virus [BVDV] as surrogate]	[Strain NADL]
Rhinovirus [Type 14] [cold virus]	[Strain 1059]
<b><i>5 minutes</i></b>	
Adenovirus Type	[Strain VR-846]
Feline Calicivirus [(surrogate for Norovirus)]	[Strain F-9]
Herpes Simplex Virus Type 1	[Strain VR-733]
Herpes Simplex Virus Type 2	[Strain VR-734]
Human Immunodeficiency Virus Type 1 [(HIV-1) (AIDS Virus)]	[Strain HTLV-IIIb]
Influenza A Virus [flu virus]	[Strain Hong Kong][H3N2]
Respiratory Syncytial Virus [RSV] [cold virus]	[Strain VR-26]
Rotavirus	[Strain WA, Univ. of Ottawa]
Vaccinia Virus	[Strain VR-119]
<b><i>10 minutes</i></b>	
Canine Parvovirus [(CPV)]	[Strain VR-2017, Cornell]
Poliovirus Type 1	[Strain Brunhilde][ATCC VR-1000]
<b>[FUNGICIDAL]</b> [In the presence of 5 % blood serum,] [is effective against]	<b>ATCC and/or Strain</b>
<b><i>5 minutes</i></b>	
Candida albicans	[ATCC 10231]
Trichophyton interdigitale [(T. interdigitale)]	[ATCC 9533]

***Bold, italicized text is information for the reader and is not part of the label.*** [Bracketed information is optional text.] Highlighted text is new. Strike-through (text) means removed

<p><b>[TUBERCULOCIDAL]</b> At 20°C / 68°F on previously cleaned hard non-porous inanimate surfaces.</p>	<p><b>ATCC and/or Strain</b></p>
<p><b><i>5 minutes</i></b></p>	
<p>[Mycobacterium bovis][Mycobacterium tuberculosis] [M. bovis] [TB]</p>	<p>[BCG] [Organon Teknika Corp.]</p>

**[ALLERGENS]**

- Wipe(s) away dirt [and] [germs][and][allergens]
- This product removes the following allergens: [cat dander], [cockroach debris/matter/particles], [dog dander], [dust [mite] debris/matter/particles], [pet dander], [pollen particles] [from timothy grass], [grass].

***Bold, italicized text is information for the reader and is not part of the label.*** [Bracketed information is optional text.] Highlighted text is new. Strike-through (text) means removed

## **OPTIONAL MARKETING CLAIMS**

### **DISINFECTION CLAIMS**

- [Cleans][Disinfects][Deodorizes][Germicidal] [Tuberculocidal][Fungicidal][Virucidal\*]
- [Antibacterial] kitchen disinfectant cleaner
- [Antibacterial] bathroom disinfectant cleaner
- [Antibacterial] household disinfectant cleaner
- [Antibacterial] formula
- Disinfects while you clean<sup>2</sup>
- Clean and disinfect in one step<sup>2</sup>
- Disinfect and clean in one step<sup>2</sup>
- Disinfects & deodorizes<sup>2</sup>
- Kills 99.9 % of [household] germs
- Disinfectant formula
- Germicidal Detergent
- Everywhere disinfectant<sup>1</sup>
- [Eliminates] [Effective Against] [Kills] 99.9 % of Bacteria
- [Eliminates] [Effective Against] [Kills] 99.9 % of Viruses\*
- Broad Spectrum [Hospital] [Disinfectant] [Germicide]
- [Eliminates] [Kills] over 99.9% of bacteria & viruses\* including flu virus\*
- Broad spectrum germicidal
- Kills [cold] [&] [flu] viruses\*
- [Kill[s]] [Remove[s]] [Effective against][Eliminates 99.9% of] [99.9% of][the following] [organisms:] [germs][harmful bacteria and viruses\*][***List any organism included in Table 1***][commonly found in/on ***insert option from Tables 3 or 4***]
- [One step cleaning -and/or- disinfecting -and/or- deodorizing]<sup>2</sup>
- [Disinfect -and/or- touch-up clean] [Cleans -and/or- disinfects -and/or- deodorizes] [In one step]<sup>2</sup>
- Kills 99.9% of household **or** kitchen **or** bathroom germs [,] [botanically] [on hard, non[-]porous surfaces]
- Wipe away 99.9% of germs and allergens
- Wipe away 99.9% of germs and allergens [even on toys]
- One step disinfectant<sup>2</sup>
- One-step disinfecting wipes<sup>2</sup>
- Kills M. bovis the organism that causes TB
- Helps reduce cross-contamination between treated surfaces
- Disinfecting Wipe
- Disinfectant Wipe
- Antibac Bathroom Wipes
- Antibac Wipes
- Tough on [dirt] [germs], easy to use.
- Kills 99.9% of germs<sup>3</sup> before they [multiply **and/or** grow **and/or** thrive **and/or** spread **and/or** reproduce]
- Deep Cleaning [and Disinfecting]
- Clean **and/or** Disinfect on the go
- Disinfect [your cart][before you shop]
- [Convenient] Disinfectant [for your cart]

***Bold, italicized text is information for the reader and is not part of the label.*** [Bracketed information is optional text.] Highlighted text is new. Strike-through (text) means removed

- [Convenient] cart [cleaning] [and] [disinfecting]
- Disinfecting wipes for [your car][cars][automobiles] <sup>1</sup>
- Disinfects in [just 5 minutes][as little as 3 minutes\*]
- Kills viruses\* in [just 5 minutes][as little as 3 minutes]
- [Convenient] Back-to-school disinfectant
- [Daily] [Convenient] Disinfectant
- [Convenient] Disinfectant for your [holiday] [party/event/gathering]
- [Hey] [Mom] [Teacher[s]] [!] [,] [Be] [Are you] Ready for [[back-to-] school] [[the] [cold] [and] [or] [flu season]] [the holiday[s] [season]] [?] [!]
- [Sensible][No compromise][Disinfectant][Formula]
- A fresh start for all [but][except][germs][unless you're a germ]
- Kills germs<sup>3</sup> that can hide in [grease][grime][on dirty surfaces]
- Kills the virus[es] that cause[s] [the] [common] [cold[s]†] [cold (Rhinovirus)] [and] [or] flu
- Life [doesn't][shouldn't] [have to] stop for [cleaning **and/or** disinfecting]
- A [smart] way to [disinfect] [and] [clean] the [bathroom] [kitchen] [home] [household] [office] [botanically]
- A [smart **and/or** convenient **and/or** reliable] way to disinfect [the interior of] [your vehicle] [vehicles][interiors]
- [Low [-streak **and/or** residue]] [Formula] [Wipe] [Great] [Use it] [For] [Daily] [Sensible] [Convenient] [cleaning] [and] [disinfecting] [Every day **and/or** daily] [on] [hard, nonporous] [surface[s]]
- Reaches [the places][where] germs hide
- [Say] Boo[!] to [the flu virus\*] [household germs] [kitchen germs] [bathroom germs] [[this [year] [winter] ][fall] [season]]
- Say goodbye to germs [and harsh chemicals]
- Send germs packing[!]
- Germ Buster/Blaster
- Change the way you clean and disinfect
- Kills 99.9% of germs including cold & flu viruses\*

## **CLEANING AND DEODORIZING CLAIMS**

- Quick and easy cleaning
- Effectively controls odor
- [Eliminates] odor-causing bacteria
- [Eliminates] odor
- Multi-Purpose
- Multi-Purpose Cleaner
- Multi-Surface [formulation]
- Carpet Cleaner and Deodorizer
- Bathroom Cleaner
- Everyday Cleaner
- Clean without a [harsh] [strong] chemical[s]
- Removes allergens
- Change the way you clean with a product that's simple to use and can help clean up life's everyday messes
- Clean **and/or** Destroy **and/or** Withstand **and/or** Weather tough messes
- Gentle on [most][all] surfaces



***Bold, italicized text is information for the reader and is not part of the label.*** [Bracketed information is optional text.] Highlighted text is new. Strike-through (text) means removed

- Gentle wipe for easy cleaning
- Easy cleaning for [kitchen] surfaces
- Put ***this product/product name*** on your school supply list to help keep your child's classroom clean
- Cleans to a shine
- Leave your surfaces sparkling [clean]
- Removes [more than] 99% of [pet][indoor ***and/or*** outdoor] allergens [of concern][that cause sneezing ***and/or*** coughing ***and/or*** runny nose]
- Unbelievable cleaning strength
- A conscionable clean
- Guilt-free clean
- [Better/brighter clean], [Better/brighter home], [Better/brighter day]
- Cleans [***insert number***]x Better
- Powerful clean with a [pleasant][beautiful][fresh] scent
- Change the way you clean
- Demolishes ***and/or*** Dissolves grease ***and/or*** grime ***and/or*** stuck on messes
- Perfect ***and/or*** essential for [household][classroom] cleaning
- Leaves your home looking like new
- Maximum cleaning, minimum effort
- Powerful citric acid cleaner ***and/or*** degreaser
- Keep the shine, ditch the grime
- Quick ***and/or*** easy cleaning for the holidays
- Quick cleaning so you can get back to [what matters][your family][doing][life]
- Clean fast, and get on with life
- A clean powered by plants, rooted in results
- Easy Breezy Cleaning
- Free and clear cleaning
- Clean powered by botanical actives [and essential oils]
- [Your favorite] plant based [cleaner][cleaning wipe]
- Multi-purpose cleaning formula suitable for: Bathrooms, Kitchens, Knobs & Switches, Toys, Phones & Remotes
- You can clean an entire [***insert option from table 3 or table 4***] with just [***insert number***] wipes[!]
- Clean ***and/or*** Destroy ***and/or*** Withstand ***and/or*** Remove the following [tough] [messes] [soils] [stains]
  - Food residue[s]
  - [Fruit] juice[s]
  - Condiment[s]/sauce[s] [stains]
  - Crumbs
  - Coffee [stains]
  - Particles
  - Blood
  - Laboratory stains
  - [Kitchen] grease
  - Grime
  - Fingerprints
  - Lotion
  - Oil[s]

***Bold, italicized text is information for the reader and is not part of the label.*** [Bracketed information is optional text.] Highlighted text is new. Strike-through (text) means removed

- Mud
- [Soap] [scum]
- Spill[s]
- [Soft] drinks
- Other common [soils] [stains] [messes]
- Clean **and/or** Remove the following pet [messes] [soils] [stains]
  - Hair
  - Fur
  - Fecal Matter
  - Urine

## **SURFACE COMPATIBILITY AND USAGE CLAIMS**

- No haze
- [Virtually] [haze-free] [film-free] [shine] [clean]
- [Low-haze] [Low-Film] [No-Film] [Clear-Drying] [Formula] [Wipe] clean[s] thoroughly
- For plastic and painted surfaces, spot test on an inconspicuous area before use.
- [This product or product name] will not harm most surfaces: including acrylic, sealed fiberglass and vinyl.
- Do not use on unpainted wood.
- Note: Do not use on unpainted wood or natural marble or brass.
- For plastic and painted surfaces, spot test on an inconspicuous area before use.
- Will not damage hard, non[-]porous surfaces
- Dries clear on mirrors and glass
- No streak
- Streak free
- Dries clear
- Proven effective on most hard surfaces
- For daily use
- Low streak **and/or** residue
- Formula with [low] [less] [lower] [streaking][residue]
- Use where you live, work and play
- Won't dry out, damage, or fade car surfaces
- Easily keeps your [car][vehicle] clean
- [Virtually] no trace **or** film left behind

## **PACKAGING/MATERIAL CLAIMS**

- [Made from [x]% [recycled plastic] [post consumer resin]]
- Made in USA
- Our [longest lasting **and/or** thickest] [disinfecting] wipe [ever]
- **For refill bags only:** [For use in][Drop/Place in] [**insert wipe dispenser name**][empty canister][wipe dispenser]
- Stackable [disinfecting][wipes][refills][packages][packs][pouches]
- [Meet] the scrubbing power/side of a sponge in a disinfecting wipe
- [Use the][smooth **and/or** soft side for cleaning dirt away **and/or** disinfecting

***Bold, italicized text is information for the reader and is not part of the label.*** [Bracketed information is optional text.] Highlighted text is new. Strike-through (text) means removed

- Thicker texture
- Dual sided [texture][wipe]
- Dual [action][use][wipe][cloth]
- [Buy] [one/two] for home, one for [school] [the car] [the purse] [to go]
- Combo pack
- Refill pack
- [Convenient] [Size][and] [easy to use]
- [Easy] [Better] [New] [&] [Improved] [Dispensing] [Lid] [Closure]
- Easy-carry handle
- [Easy][Effortless] one hand cleaning
- Easy open lid
- Semi-rigid flap for a secure closure [with less plastic]
- Easy to carry
- Great for [on the go][travel][traveling][unexpected messes]
- Resistant to drying out
- Wipes stay moist **and/or** wet
- [Individual] [refills] [rolls] [package] [pouch] [stay[s]] [keep[s]] [moist] [fresh]
- [Stays moist for] No wasted wipes [!]
- [Now with][Built-in] [Micro] [tough] scrubbing fibers
- Disposable wipe
- Toss wipe after use
- [Advanced][Better][Stronger][Powerful] Texture **or** Cloth [for better cleaning]
- Less plastic for easier disposal
- Designed to look good [in your home][on your counter]
- Plant-based cloth
- Plant-based substrate
- Premium[, plant-based] cloth
- Designed to leave on the [kitchen] counter
- Leave me out on the counter [to make cleaning easier **and/or** more convenient]
- Resealable package/pouch/pack
- Snap and seal package/pouch/pack
- Stays wet **or** moist [better than ever before]
- Moisture lock cloth **or** wipe
- Scrubby texture
- Super scrubby [cloth][wipe]
- Wipes won't dry out<sup>2</sup>
- Wipes dispense one at a time [for less waste][for ease of use]

## INGREDIENT CLAIMS

- [Please visit our website (*insert url*) for more information on [ingredients][contents]]
- Non-corrosive ingredients
- Bleach Free
- Botanical
- Botanical Cleaning
- Botanical surface cleaner with natural essential oil[s]
- Botanical ingredient[s]

***Bold, italicized text is information for the reader and is not part of the label.*** [Bracketed information is optional text.] Highlighted text is new. Strike-through (text) means removed

- Botanically derived ingredient[s]
- Botanical active ingredient
- Botanically derived [active ingredient][citric acid]
- [Botanically based] product]
- Plant-based [formula]
- [Effective] Plant-based cleaning power
- Dye free [formula]
- Bleach[-]free
- Paraben[-]free
- Phenol[-]free
- Free of glycol solvents
- Free of chlorine of formaldehyde
- Free of gluten
- Free of phosphate
- Free of formaldehyde
- Free from harsh [and abrasive] chemicals
- [Contains no][No] [Does not contain] [bleach,] [added dyes,] [added colors,] [perfumes,] [ammonia], [phosphates], [phosphorus], [chlorine bleach], [dyes], [synthetic fragrances,] [known or suspected endocrine disruptors,] [glycol ethers,][chlorinated compounds,] [or] [chlorine] [phenol][MIT][BIT]
- Does not contain [bleach] [ammonia] [chlorine]
- Does not contain [Triclosan] [Parabens]
- Made without Parabens and Phthalates
- [Free of][no] dye and/or perfumes
- Free of [glycol solvents] [chlorine of formaldehyde] [gluten] [phosphate]
- No harsh chemicals
- No artificial fragrance
- [Formulated][with][using] botanical actives [and essential oils]
- For ingredient information, go to (*insert url*)
- A list of [this product's] [product name] ingredients is available at [insert company website].
- [For more information][Visit our website][**company url**]
- made] [formulated][using] [with] essential oils
- Effective botanical [formula][wipes]
- [Cleans] [disinfects] with [botanically-derived ingredients] [plant-based ingredients]
- [Contains][Includes] Biodegradable detergents
- The surfactants contained in this product are biodegradable. [Surfactants are cleaning agents]
- Fragrance free [formula]
- Plant-derived [citric acid][disinfectant][cleaner][cleaning power ingredient]
- Say goodbye to harsh chemicals
- Does not contain [Quaternary Amines] [Quats]
- Botanical citric acid as the active ingredient
- Citric acid [derived] from plants
- [Free from][Contains no][Does not contain][ammonia][fumes][quats][bleach][quaternary compounds][gluten]
- Infused with [citric acid **and/or** plant based extracts]
- Lightly scented
- Light fragrance

***Bold, italicized text is information for the reader and is not part of the label.*** [Bracketed information is optional text.] Highlighted text is new. Strike-through (text) means removed

- Made with plant-derived citric acid
- Won't leave greasy residue on hands
- With a bleach-free formula
- With a [pleasant][refreshing] fragrance **and/or** scent
- The smell of clean
- Beautifully fragranced with essential oils and other plant-derived ingredients
- Formulated without parabens, phthalates, bleach, dyes, and synthetic fragrance

## **MISCELLANEOUS CLAIMS**

- Ready to Use
- Non-Irritating
- Non-corrosive
- We're here to help when life happens.
- Inspired by nature
- No Rinse required<sup>4</sup> [even on [children's] [toys]]
- [Please rinse toys][Rinse toys with potable water] ***\*note: rinsing toys is not required with this product, but it is acceptable for distributor to make this statement***
- Rinse free [formula]<sup>4</sup>
- No Rinse<sup>4</sup>
- No Rinse Formula<sup>4</sup>
- Rinse Free Formula<sup>4</sup>
- No Rinse Disinfectant<sup>4</sup>
- [Can be used] around pets
- When used as directed, safe for use around [pets][cats and dogs]
- Good for use around cats and dogs
- No harsh fumes
- Non-flammable
- Safely store out of reach of children
- Store safely out of reach of children
- Do not use as a diaper wipe or for personal cleansing.
- This is not a baby wipe!
- A trusted brand of [company name]
- The difference is on the label
- [Hey Mom] Take [***this product***][me]to my [classroom][school][teacher]
- Keep your home your sanctuary with our One-Step Disinfecting Wipes, made with botanical ingredients

***Following is for use only for 6 months after first date of sale. Statements can be combined. Exclamation points (!) can be included after statements.***

- [Now]
- [New]
- [Re-design]
- [Improved][Better][Look][Packaging]

***For all claims: Plural words can be listed in their singular form and singular words can be listed in their plural form.***

***Bold, italicized text is information for the reader and is not part of the label.*** [Bracketed information is optional text.] Highlighted text is new. Strike-through (text) means removed

**TABLE 2: FRAGRANCE DESCRIPTORS**

***Note: each scent list in “Fragrance Descriptors” section may also be represented by a graphic depicting the corresponding scent, except when referring to a type of food, in this case the graphic will be submitted to the Agency for review.***

***Various descriptors can be combined***

Apple Blossoms	Cucumber Melon	Lemon Ginger Mint	Pleasant
Lemon Squeeze	Cucumber Sage	Lemon Ginger Reed	Pleasing
Almond Cream	Dye And Fragrance Free	Lemon Lime	Pomegranate
Apple	Essence	Lemon [Scent]	Pomegranate Dragonfruit
Apple Orchard	Eucalyptus [Mint]	Lemon Verbena	Purple Wildflower
Arctic Breeze	Floral	Lemon Verbena	Refreshing
Aroma	Floral Woods	Lemon Ylang	Relaxing
Asian Pear	Fragrance	Lemon Ylang Flower	Ruby Red Grapefruit
Bamboo	Fragrance Free	Lemon Zest	Scent Free
Bold	Free And Clear	Light	Soothing
Botanical	Fresh Citrus	Lime	Soothing
Bouquet	Fresh Citrus Sparkle	Lime Blossom	Spearmint
Bramley Apple Blossom	Fresh Meadows	Mandarin Green Tea	Spice
Cherry	Fresh Scent	Mandarin Mint	Strawberry
Citron	Fresh Squeezed	Match Fleur	Strong
Citrus	Freshlisted Descriptor	Mint	Sugared Lemon
Citrus Burst	Glacier Mint	Modern Citrus Lime	Summer Rain
Citrus Eucalyptus Sage	Good	Mountain Green	Sunshine Vetiver
Citrus Fresh	Great	Naked & Free	Sweet Pea
Citrus Splash	Green Tea Citrus	Ocean Breeze	Sweet Pea Bloom
Clean	Herbal	Odor	Tarocco Orange
Clean And Fresh	Honey Spiced Fig	Orange	Tropical
Clean Kitchen Lemon	Indian Mango Orange	Orange Fresh	Tropical Paradise
Clean Mint	Invigorating	Orange Mango	Unscented
Clean Sparkle	Island Coconut	Orange Mango Lily	Verbena Orange
Cleanmint	Island Springs	Orange Zest	Warm
Cool	Japanese Cherry Blossom	Outdoor Fresh	Waterfall Mist
Cool Mint	Lavender [& Eucalyptus]	Pacific Rose Apple	White Diamonds
Cotton Breeze	Lavender & Cucumber	Paradise Escape	Wild Lemon Ylang
Cotton Lily	Lavender + Sage	Peach	Wild Lime Verbena
Creamsicle	Lavender Lime	Pear	Wildflower
Crisp	Lavender Vanilla Orchid	Perfume	Winter Fresh
Crystal Clean	Lemon Bergamot	Pina Colada	Wintergreen
Crystal Mint	Lemon Breeze	Pine	Wintermint
Cucumber Aloe	Lemon Ginger	Pink Grapefruit	[scent[ed] <b><i>insert after any listed descriptor</i></b>

***Bold, italicized text is information for the reader and is not part of the label.*** [Bracketed information is optional text.] Highlighted text is new. Strike-through (text) means removed

**DIRECTIONS FOR USE:** [Please read all directions carefully before using this product.] It is a violation of Federal Law to use this product in a manner inconsistent with its labeling. [Product is ready to use.] Preclean areas with [gross filth and] visible soil prior to disinfection.

**[DISPENSER DIRECTIONS:]**

[TO OPEN PACKAGE:]

***Option 1***

[To start feed, remove large cover. Pull up the towelette corner from the center of the towelette roll, twist it into a point and thread it through the hole in the container cover. Pull through about one inch. Replace cover. Pull out first towelette and snap off at a 90° angle. Remaining towelettes feed automatically ready for their next use. When through using, keep small center cap closed to prevent moisture loss.]

***Option 2***

Open lid. Pull out wipe from center of roll and through lid. Close lid to retain moisture

***Option 3***

Remove cover. Pull up wipe corner from center of roll. Thread through hole in the cover. Replace cover. Open center cap on cover to remove wipe. When not using, close center cap securely to prevent moisture loss.

***Option 4***

Flip open lid. To remove first wipe, pull up on wipe and remove wipe through wavy dispensing opening. The next wipe will pop up automatically. Always snap lid securely between uses to retain moisture.

**[Flat Pack Opening instructions:]**

***Option 1***

[TO OPEN PACKAGE:]

Slowly peel back label. Pull out wipes as needed. Reseal label to retain moisture.

***Option 2***

[TO OPEN PACKAGE:]

Slowly peel back [semi-rigid] flap. Pull out wipes as needed. Reseal/Close [semi-rigid] flap to retain moisture.

***Option 3***

[Open plastic lid.] Slowly peel back label. Pull out wipes as needed. [Reseal label to retain moisture.] [Close lid].

***Option 4***

Slowly open [semi-rigid] flap. Pull out wipes as needed. Reseal/Close [semi-rigid] flap to retain moisture.

***Option 5***

Peel and reseal here.

***Bold, italicized text is information for the reader and is not part of the label.*** [Bracketed information is optional text.] Highlighted text is new. Strike-through (text) means removed

**[Refill instructions:]**

***required with Storage and Disposal instructions for refill packaging***

***Option 1***

Open pouch. [Place refill in] **or** [Insert wipes into] empty tub **or** dispenser **or** canister. Replace lid. Pull out wipes as needed. Close lid to retain moisture.

***Option 2***

1. Remove the lid from the empty tub **or** dispenser **or** canister.
2. Insert new roll of wipes
3. Replace lid [of tub **or** dispenser **or** canister]
4. [Dispense][Pull out] wipes as needed
5. Close lid to retain moisture

***Alternative directions for individual subregistrants in Appendix***

**[TO [CLEAN]/[DEODORIZE]] [Cleaning Instructions] or [How to use]:**

[Apply to surface[s] [as needed].][Wipe clean.]

[Unfold premoistened cloth and wipe area to be cleaned for 30 seconds or until clean.]

[Spot check to test for compatibility]

**TO DISINFECT or Disinfecting Instructions:**

***Option 1***

[Unfold premoistened cloth and] Wipe hard non-porous area or item to be disinfected. Wet all surfaces thoroughly. The surface must remain wet for at least **or** Leave for 3/5/10<sup>S</sup> minutes. [Wipe or] Let air dry.

***Option 2***

Wet the hard, non-porous surface with the wipe. Allow surface to remain visibly wet for 3/5/10<sup>S</sup> minutes. Allow to air dry.

***Option 3***

Use to disinfect hard, nonporous areas. Wipe surface to be disinfected. Allow treated surface to remain visibly wet for 3/5/10<sup>S</sup> minutes.

***Option 4 (for use in Bona mopping systems)***

Remove, unfold the cleaning pad, place mop on top of [green][blue] fastening strips. To Disinfect: Mop [surface][desired area][with pad], ensuring surface remains wet for 3/5/10<sup>S</sup> minutes. Dispose after use, do not flush. [Do not follow the disinfect directions for an entire wood or laminate floor due to excess moisture being introduced, which could cause damage]

**NOTE: When food contact surfaces are listed, the following is REQUIRED:**

No rinsing or wiping is required except on food contact surfaces which require a potable water rinse after [use][treatment][disinfection]

**OR**

Rinse all food contact surfaces with potable water after [use][treatment][disinfection]

***When only non-food contact surfaces are listed, the following is optional:***



***Bold, italicized text is information for the reader and is not part of the label.*** [Bracketed information is optional text.] Highlighted text is new. Strike-through (text) means removed

[No rinsing or wiping is required.]

***Optional:***

**[FUNGICIDAL DIRECTIONS]:** This product is effective against *Trichophyton interdigitale* (athlete's foot fungus and a cause of ringworm) on inanimate surfaces [in locker rooms, dressing rooms, exercise facilities, and shower and bath areas]. [Follow disinfection directions.]

[Use contact time in accordance with listed organisms]

***§NOTE: Use contact time in accordance with organisms listed on the distributed product label.***

**[Veterinary Practice / Animal Care / Animal Laboratory / Zoos / Pet Shop / Kennels Disinfection**

**Directions:** For cleaning and disinfecting hard nonporous surfaces: equipment used for animal food or water, utensils, instruments, cages, kennels, stables, catteries, etc. Remove all animals and feeds from premises, animal transportation vehicles, crates, etc. Remove all litter, droppings and manure from floors, walls and surfaces of facilities occupied or traversed by animals. Empty all feeding and watering appliances. Thoroughly clean all surfaces with soap or detergent and rinse with water. Saturate surfaces with [this product] for a period of 10 minutes. Wipe or allow to air dry. Thoroughly scrub all treated surfaces that come into contact with food, including equipment used for feeding or watering, with soap or detergent and rinse with potable water before reuse. Do not house animals or employ equipment until treatment has been absorbed, set or dried.]

***Bold, italicized text is information for the reader and is not part of the label.*** [Bracketed information is optional text.] Highlighted text is new. Strike-through (text) means removed

***Note for Tables 3 & 4: Plural use sites and areas can be listed in their singular form and singular use sites and areas can be listed in their plural form***

**TABLE 3: USAGE CLAIMS<sup>1</sup>**

[Suitable] [Intended] [for use] [on] [in]

[AREAS OF USE:]

[Graphic – depicting listed use areas]

Airplanes	Classrooms	Jungle Gyms	Public Facilities
[Air]plane Lavatories	Colleges	Kennels	Public Restrooms
[Damp] Storage Areas	Convenience Stores	Kitchens	Reception Areas
[Diaper] changing areas	Correctional Facilities	Laboratories [or other small animal facilities]	Rest Stops
[Elementary] Schools	Day care centers	Laundromats	Restaurants
[Mobile] Home	Dens	Lavatories	Restrooms
[Rental] Cars	Dental offices	Living Areas	RVs
[School] Buses	Discount Retailers	Lobbies	Schools
Airports	Dorms	Locker Rooms	Shelters
Ambulances	Elevators	Long Term Care Facilities	Ships
Apartments	Factories	Lounges	Shopping Centers
Athletic Facilities	Family Rooms	Malls	Shops
Automobiles	Fast Food Restaurants	Manufacturing Plants	Shower [rooms]
Basements	Fitness Centers	Markets	Spas
Bathrooms	Garages	Medical Offices	Subways
Bedrooms	Gas Stations	Military Installations	Supermarkets
Boats	Grocery Stores	Motels	Trains
Bowling Alleys	Grooming Facilities	Motorboats	Trolleys
Break rooms	Gym[nasium]s	Nurseries	Universities
Buses	Health Care Facilities	Nursing homes	Vehicle [Interiors -and/or- Exteriors]
Butcher Shops	Health Clubs	Offices	Veterinary Clinics
Cafeterias	Hospitals	Pet Areas	Waiting Rooms
Campers	Hotels	Pharmacies	Warehouses
Campgrounds	Household	Physician's Offices	Work[places]
Cars	Industrial Facilities	Play Areas	
Children's [Play]rooms	Institutional facilities	Play Rooms	
Churches	Institutions	Playgrounds	

***Bold, italicized text is information for the reader and is not part of the label.*** [Bracketed information is optional text.] Highlighted text is new. Strike-through (text) means removed

**TABLE 4: TYPES OF SURFACES/USE SITES<sup>1</sup>**

[Graphic – depicting listed surfaces]

[Air]plane Tray [Tables]	Cooktops	Glazed [ceramic] [tile]
Ambulance patient care surfaces	Cooler exteriors	Glazed porcelain
Anesthesia equipment surfaces	Counters	Glazed Porcelain
Appliances <sup>5</sup>	Countertops	Handrailings
Baby/infant care surfaces	CPR manikins	High Chairs
Baby Rooms Furniture/Surfaces	Cribs	Highchairs
Backboards	CT equipment/surfaces	Immobilization devices
Baked Enamel	Cup Holders	Infant care equipment
Baseboards	Cupboards	Isolettes
Bathing units	Curing lights	Keyboards
Bathrooms [tubs] [tiles]	CuVerro® antimicrobial copper	Kitchen appliances <sup>5</sup>
[Bath]tubs	Dashboard	Kitchen Appliances <sup>5</sup>
[Bathroom] Mirrors	Dental chairs	Kitchen countertops
[Bathroom][Kitchen] Faucets	Dental equipment surfaces/devices	Kitchen surfaces
Beakers	Dental lamps	Kitchen Tables
Bed railings	Desks	Laboratory equipment/surfaces
Bed Rails	Diagnostic Equipment	Laminates
Bed Springs/Frames	[Diaper] Changing Tables	Laptops
Beds	Diaper Pails	Laundry Rooms
Bidets	Dining Room Tables	Lawn Chairs
Blinds	Door [frames][handles]	LCD Screens
Blood pressure devices	Doorknobs	Light lens covers
[Booster][Car] Seats	Drinking Fountains	Light Switches/Fixtures/Panels
Cabinets	Exam tables	Lights
Cabinets	Exercise equipment	Litter boxes
Cages	Exterior Surfaces of Urinals	Lumens
Car Interiors	[Fast Food] Restaurant Tables	Medical equipment surfaces/devices
Carts	Filing Cabinets	Metal
[Cell] Phones	Fitness Center Equipment	Mice/Mouse
Chairs	Fixtures	Microscopes
Changing tables	Floors	Microwaves (exterior surfaces)
[Child] Strollers	Floors	Mirrors
[Children's] Furniture	Furniture	MRI equipment surfaces
Children's toys	Gaming Systems	Navigation Screens
Chrome	Garage surfaces	Neonatal/nursery surfaces
Closets	Garbage cans	Nonporous athletic mats
[Clothes][Diaper] Hampers	Garbage disposals	Obstetrical equipment surfaces
Computer surfaces	Garbage/Trash Cans	Operating room lights/tables
Computers	Glass	Ophthalmic equipment surfaces/devices
Consoles	Glass tabletops	Optical wear (excluding contact lenses)

***Bold, italicized text is information for the reader and is not part of the label.*** [Bracketed information is optional text.] Highlighted text is new. Strike-through (text) means removed

***(continued)***

**TABLE 4: TYPES OF SURFACES/USE SITES<sup>1</sup>**

[Graphic – depicting listed surfaces]

Oxygen hoods	Smart Phones/Watches
Paper Towel Dispensers	Smart Screens
Patient bed surfaces	Soaking containers
Patient stretchers	Stainless Steel
Patient stretchers	Stalls
Patient transport surfaces	Storage bins
Patio Furniture	tops
Pet Habitats	Stovetops (exterior surfaces) <sup>5</sup>
Pet Soiled Surfaces	Surgical equipment surfaces
Pet toys	Surgical microscopes
Physical therapy equipment	Tables
Picnic Tables	Tablets
Plastic	Telephones
Play mats	Toilet Seats
Play-care equipment	Toilets (rims, seats and exterior surfaces)
Polyurethane	Toys
Pool maintenance equipment	Training tables
Porta-Potties	Transportation equipment surfaces
PPE (Personal Protective Equipment)	Trash Cans
[Public] Pay Phones	Trays
Radiology equipment surfaces	TV Remote [controls]
Recycling Bins	Ultrasound devices
Refrigerator Door Handles	[under] Sinks
Refrigerators (exterior surface) <sup>5</sup>	Vending Machine
Respirators	Vinyl
Respiratory care equipment surfaces	Vinyl [upholstery][wallpaper]
Sealed Granite	Walkers
Sealed marble	Walls
Sealed quartz	Washing Machines
Sealed stone	Wastebaskets
Shopping carts	Wheelchairs
Shower doors	Windows
Shower floors/walls	Work stations
Signs	Wrestling mats
Skin care equipment/surfaces	X-ray equipment/surfaces
As well as other areas/facilities concerned with the hazards of cross-contamination	

***Bold, italicized text is information for the reader and is not part of the label.*** [Bracketed information is optional text.] Highlighted text is new. Strike-through (text) means removed

*{Note to Reviewer: Emerging Viral Pathogen claims shall be made only through the following communications outlets: technical literature distributed exclusively to health care facilities, physicians, nurses and public health officials, "1-800" consumer information services, social media sites and company websites (non-label related). These statements shall not appear on marketed (final print) product labels.}*

## **EMERGING VIRAL PATHOGENS**

This product meets the criteria to make claims against certain emerging viral pathogens from the following viral category[ies]:

- Enveloped virus
- Large non-enveloped virus
- Small, non-enveloped virus

For an emerging viral pathogen that is a/an...	...follow the direction for use for the following organisms on the label:
Enveloped virus	Rhinovirus Type 14 Strain 1059
Large, non-enveloped virus	Rhinovirus Type 14 Strain 1059
Small, non-enveloped virus	Feline Calicivirus [surrogate for Norovirus] Rhinovirus Type 14 Strain 1059

Statements shall adhere to one of the following formats:

1. [Product name] has demonstrated effectiveness against viruses similar to [name of emerging virus] on hard, non-porous surfaces. Therefore, [product name] can be used against [name of emerging virus] when used in accordance with the directions for use against Rhinovirus Type 14 [and/or] Feline Calicivirus [surrogate for Norovirus] on hard, non-porous surfaces. Refer to the [CDC or OIE] website at [pathogen-specific website address] for additional information.
2. [Name of illness/outbreak] is caused by [name of emerging virus]. [Product name] kills similar viruses and therefore can be used against [name of emerging virus] when used in accordance with the directions for use against Rhinovirus Type 14 [and/or] Feline Calicivirus [surrogate for Norovirus] on hard, non-porous surfaces. Refer to the [CDC or OIE] website at [website address] for additional information.

***Bold, italicized text is information for the reader and is not part of the label.*** [Bracketed information is optional text.] Highlighted text is new. Strike-through (text) means removed

**Where medical devices are listed as applicable sites, the following will be included as required by PR 94-4 . Otherwise, the all language on this page is OPTIONAL**

**DECONTAMINATION OF CRITICAL OR SEMI-CRITICAL DEVICES PRIOR TO TERMINAL STERILIZATION/HIGH LEVEL DISINFECTION:** This product is not to be used as a terminal sterilant/high level disinfectant on any surface or instrument that (1) is introduced directly into the human body, either into or in contact with the bloodstream or normally sterile areas of the body, or, (2) contacts intact mucous membranes but which does not ordinarily penetrate the blood barrier or otherwise enter normally sterile areas of the body. This product may be used to preclean or decontaminate critical or semi-critical medical devices prior to sterilization or high-level disinfection.

**The following special instructions must be included on the label if the product is used as a hospital-grade disinfectant rather than retail/household.**

**[This Product] KILLS HIV ON PRE-CLEANED ENVIRONMENTAL SURFACES/OBJECTS PREVIOUSLY SOILED WITH BLOOD/BODY FLUIDS** in all settings in which there is an expected likelihood of soiling of hard, non-porous surfaces/objects with blood or body fluids and in which the surfaces/objects likely to be soiled with blood or body fluids can be associated with the potential for transmission of human immunodeficiency virus Type 1 (HIV-1) (associated with AIDS virus).

**SPECIAL INSTRUCTIONS FOR CLEANING AND DECONTAMINATING SURFACES/OBJECTS SOILED WITH BLOOD AND BODY FLUIDS WHICH MAY CONTAIN HIV-1 (AIDS virus).**

**PERSONAL PROTECTION:** When handling objects soiled with blood or body fluids use disposable latex gloves, gowns, mask and eye coverings.

**CLEANING PROCEDURE:** Blood and other body fluids must be thoroughly cleaned from surfaces and objects before application of the disinfectant.

**CONTACT TIME:** Leave precleaned surfaces wet for five minutes to mitigate HIV-1 virus. Use a (5) (10) minute contact time to kill all bacteria, viruses\* and fungi listed on the label. Contact time in accordance with organisms listed on the distributed product label.

**DISPOSAL OF INFECTIOUS MATERIAL:** Blood and other fluids should be autoclaved and disposed of according to Federal, State and Local regulations for infectious waste disposal.

***Bold, italicized text is information for the reader and is not part of the label.*** [Bracketed information is optional text.] Highlighted text is new. Strike-through (text) means removed

#### **STORAGE AND DISPOSAL:**

##### ***For packaging not to be refilled:***

Do not leave containers open during storage. No special handling is required. **Towelette:** Do not reuse towelette. Dispose of used towelette in trash. **Dispenser:** Nonrefillable container. Do not reuse or refill this container. Offer for recycling if available.

***or***

Dispose of used towelette in trash. Do not leave container open during storage. Do not reuse or refill empty container. Offer for recycling if available.

***or***

Store airtight at room temperature. Dispose of used towelette in trash. [Nonrefillable container.] Do not reuse or refill this empty container. Offer empty container for recycling. If recycling is not available, discard in trash.

##### ***For packaging to be refilled:***

[Store airtight at room temperature.] Dispose of used towelette in trash. Do not leave container open during storage. Do not reuse or refill empty container except as described in the directions for use. Refill only with this product. Offer for recycling if available.[If recycling is not available, discard in trash.]

---

#### **FOOTNOTES:**

\*Viruses

<sup>1</sup>on hard, non-porous surfaces

<sup>2</sup>when used according to disinfection directions ***or link to disinfection directions***

<sup>3</sup>*Pseudomonas aeruginosa, Salmonella enterica, Staphylococcus aureus, [insert any virus from list][insert additional viruses/bacteria as desired]*

<sup>4</sup>Except on food contact surfaces which require potable water rinse

<sup>5</sup>Allow surface to come to room temperature prior to treatment

***Bold, italicized text is information for the reader and is not part of the label.*** [Bracketed information is optional text.] Highlighted text is new. Strike-through (text) means removed

**APPENDIX 1:  
THE FOLLOWING OPTIONAL LANGUAGE AND  
GRAPHICS ARE AVAILABLE FOR USE BY  
APPROVED SUBREGISTRANTS**



***Bold, italicized text is information for the reader and is not part of the label.*** [Bracketed information is optional text.] Highlighted text is new. Strike-through (text) means removed

**The following statement is required when registering product as Designed for the Environment:**

For ingredient information, go to [[www.wexfordlabs.com/DfE/wipes.html](http://www.wexfordlabs.com/DfE/wipes.html)]

or

A list of [this product's] [product name] ingredients is available at [insert company website].

or

[For more information][Visit our website][[company url](#)]



***Bold, italicized text is information for the reader and is not part of the label.*** [Bracketed information is optional text.] Highlighted text is new. Strike-through (text) means removed

***For Home Made Simple***

[company logo]

Make It Simple. Make It Home. Make It You.



ONE STEP  
DISINFECTANT



KILLS 99.99%  
OF GERMS



BOTANICALLY DERIVED  
INGREDIENTS



CLEAR DRYING  
FORMULA

It's been our mission since 2003 to help families create homes they love to live in. That's why we've crafted a line of plant-based cleaning products that really work. Simply what you need to build your happy, healthy home that reflects who you are and helps you take care of it too.

AS SEEN ON  
**OWN**

OPRAH WINFREY NETWORK

*Alternate Dispenser Instructions*

**TO OPEN PACKAGE:** Open the lid and pull up wipe from center of the roll. Feed wipe through guide pulling it through to next perforation.

The next wipe will pop up automatically. Always close lid securely between uses to retain moisture.

***For Earth Friendly Products***

[company logo]

See the Clean.  
Feel the Love.™



**MAJORITY  
WOMEN  
OWNED**



***Bold, italicized text is information for the reader and is not part of the label.*** [Bracketed information is optional text.] Highlighted text is new. Strike-through (text) means removed

### ***For Lemi Shine***

#### ***Alternate Dispenser Instructions***



[Flip open lid. To remove first wipe pull up on wipe and remove wipe through wavy dispensing opening. The next wipe will pop up automatically. Always snap lid securely between uses to retain moisture.]



***Lemi Shine (Supplemental Registrant)  
Company Logo***



### ***For Method***

[company logo]

- we have more laundry, cleaning + hand soap at [website url]"
- you think you're so smart don't you? Well...you are, okay? you win"
- germ\* buster. There's a new antibac in town and its made from a formula that's tough on grease and grime and easy on surfaces. Plus, you'll be happy to know that it kills 99.9% of germs\*, leaving behind the pleasant scent of victory
- you can feel good about using these [botanical][,] wipes everywhere<sup>†</sup>
  - [cribs][bibs][+][baby mobiles]
  - big doggone messes
  - bathroom sinks, tubs + tile
  - and the kitchen sink

<sup>†</sup>on hard, nonporous surfaces

***Bold, italicized text is information for the reader and is not part of the label.*** [Bracketed information is optional text.] Highlighted text is new. Strike-through (text) means removed

**For Bona**

[company logo]

- For use on unwaxed, polyurethane finished wood, ceramic tile with sealed grout lines, sealed granite, or laminate flooring
- Treating spots, spills or small areas will minimize the risk of water damage.
- Regular cleaning with the Bona family of Floor Cleaners is safe for all urethane finished hardwood and sealed hard-surface floors.
- Just mop and toss!
- GENERAL INFORMATION: Have the product container or label with you when calling a poison control center or doctor or going for treatment. For non-emergency and general information on product use, etc., information pertaining to this product, call the National Pesticides Information Center at 1-800-858-7378 (NPIC web site: [www.npic.orst.edu](http://www.npic.orst.edu)). For emergencies, call the poison control center 1-800-222-1222.
- STORAGE AND DISPOSAL: Store in original container, in a cool and well-ventilated area, inaccessible to children. Do not leave container open during storage. To avoid waste, use all material in this container according to label directions. Do not reuse this container for any other purpose. Do not reuse or refill this container. Discard in trash or offer for recycling if available.
- A Bona system™ Cleaning Pad
- Disposable Wet Cleaning Pads for Hard Surface Floors
- Use of this product on unsealed surfaces may cause staining. Do not use on unfinished, oiled or waxed wood floors, non-sealed tiles, carpet floor, or marble.



**1** Remove, unfold the cleaning pad, place mop on top of blue fastening strips

Quitar, desplegar el paño de limpieza colocar trapeador encima de las tiras azules de fijación



**2** Mop  
Fregar



**3** Dispose after use, do not flush  
Deseche después de usar, no los deseche en el inodoro.

**1** Remove, unfold the cleaning pad, place mop on top of green fastening strips  
Quitar, desplegar el paño de limpieza, colocar trapeador encima de las tiras verdes de fijación

**2** Mop  
Fregar

**3** Dispose after use, do not flush  
Deseche después de usar, no los deseche en el inodoro.



Revive, Restore or Refinish™ your hardwood floors using a Bona Certified Craftsman®. Find a hand-picked professional at [Bona.com](http://Bona.com).

**Bold, italicized text is information for the reader and is not part of the label.** [Bracketed information is optional text.] Highlighted text is new. Strike-through (text) means removed



Made in USA with Pride logo™ is a trademark of U.S. Nonwovens Corp. All rights reserved.

**Great Quality. Guaranteed.**  
 Return the package and the receipt for replacement or money back.  
 1-877-505-2267 or visit us online at walmart.com



**Great Quality. Great Price. Guaranteed.**  
 Our guarantee is our promise that you'll be fully satisfied with the quality of every Great Value product. If for any reason you aren't happy, we'll replace it or return your money. Whichever you prefer. All you need is the package. It's that simple. Guaranteed.  
 Tell us what you think... 1-877-505-2267 or online at walmart.com/greatvalue



**Great Quality. Guaranteed.**  
 Return the package for replacement or money back.  
 1-877-505-2267 or visit us online at walmart.com



**Cleans. Disinfects. Guaranteed.**  
 Return the package and the receipt for replacement or money back.  
 1-877-505-2267 or visit us online at walmart.com





**100% Guaranteed**  
 We're committed to providing premium quality products at an exceptional value. If you're not completely satisfied we'll refund your money.

---

**100% Garantizado**  
 Estamos comprometidos a ofrecer productos de alta calidad a un valor excepcional. Si no está completamente satisfecho, le devolveremos su dinero.

**100% Guaranteed**  
 We're committed to providing premium quality products at an exceptional value. If you're not completely satisfied we'll refund your money.

**100% Garantizado**  
 Estamos comprometidos a ofrecer productos de alta calidad a un valor excepcional. Si no está completamente satisfecho, le devolveremos su dinero.

**MEMBER'S SELECTION**<sup>®</sup>

**100% Guaranteed**  
 We're committed to providing premium quality products at an exceptional value. If you're not completely satisfied we'll refund your money.

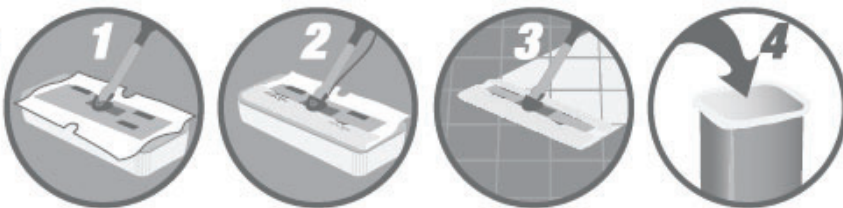
---

**100% Garantizado**  
 Estamos comprometidos a ofrecer productos de alta calidad a un valor excepcional. Si no está completamente satisfecho, le devolveremos su dinero.



***Bold, italicized text is information for the reader and is not part of the label.*** [Bracketed information is optional text.] Highlighted text is new. Strike-through (text) means removed

Use on  
mop  
head.



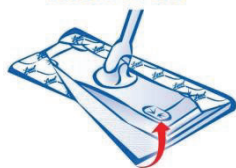
TO OPEN:

1. Cut off top of pouch with scissors.
2. Remove wipes from pouch.
3. Place wipes in plastic tub.
4. Discard empty pouch into trash.

TO USE WITH MOP:

1. Unfold top wipe in tub by pulling sides of the cloth over edges of tub.
2. Place sweeper on head.
3. Wrap wipe around head of sweeper.
4. Push edges of wipe into top of sweeper head.
5. Begin wiping. No rinsing required.
6. After use, remove soiled wipe and discard in trash. Do not flush.

***Tuck & Go***

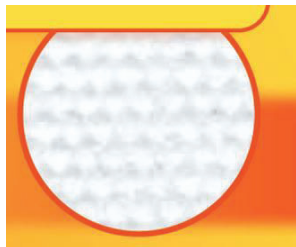
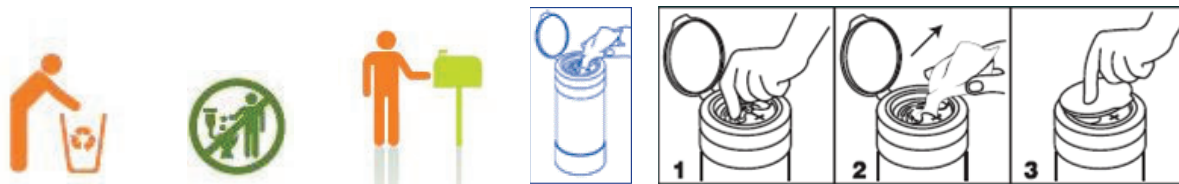


*Note to reviewer: Representative graphic of wipe tub and/or hand pulling out wipe fabric may be added to the final printed label.*

*Note to reviewer: A representative graphic of a substrate may be added to the label. Only a graphic of the substrate actually in the canister can be added to the final printed label.*



***Bold, italicized text is information for the reader and is not part of the label.*** [Bracketed information is optional text.] Highlighted text is new. Strike-through (text) means removed



*{Note to reviewer: the graphic to the left denotes a picture of a substrate. It will only be added to the final printed label if this substrate is actually in the canister can.}*



**TO OPEN PACKAGE:**

- Flip open dispensing cap and remove entire lid from canister by lifting upward.
- Locate wipe at center of roll, twist corner to a point and thread through small opening in lid. **DO NOT PUSH FINGER THROUGH OPENING.**
- Replace lid and pull sheet up at an angle. Remaining wipes feed automatically.
- When finished, snap lid cap shut to retain moisture.





**Bold, italicized text is information for the reader and is not part of the label.** [Bracketed information is optional text.] Highlighted text is new. Strike-through (text) means removed



[graphic depicting outdoor fresh scent]

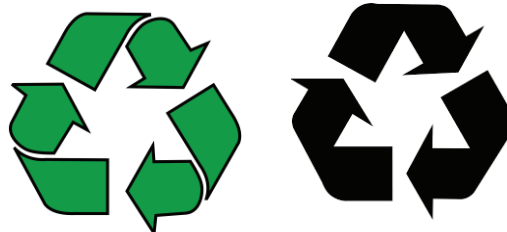


	<b>We Promise</b> to make good products at good prices for good people. Enjoy!
	<b>Thank You</b> Target gives 5% of its income to the community to support education, the arts, social services and volunteerism.



- ✓ item replaced
- ✓ money refunded

***Bold, italicized text is information for the reader and is not part of the label.*** [Bracketed information is optional text.] Highlighted text is new. Strike-through (text) means removed



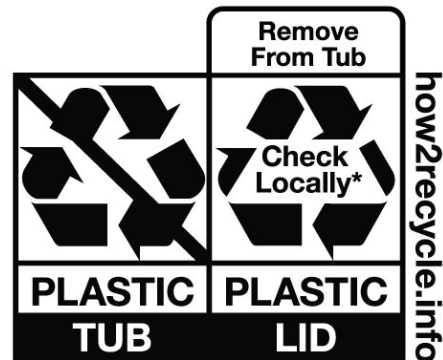
**Bold, italicized text is information for the reader and is not part of the label.** [Bracketed information is optional text.] Highlighted text is new. Strike-through (text) means removed



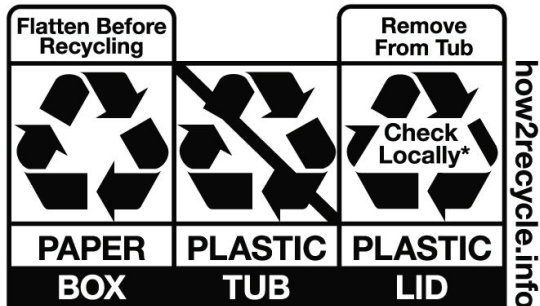
[company logo]



[company logo]



**\*Not recycled in all communities**



**\*Not recycled in all communities**

**Bold, italicized text is information for the reader and is not part of the label.** [Bracketed information is optional text.] Highlighted text is new. Strike-through (text) means removed



More cleaning and laundry products at [BOULDERCLEAN.COM](http://BOULDERCLEAN.COM)



**Certified**



**Corporation**



*Certified B Corp logos can be displayed in various colors. These logos are only acceptable for companies that hold certification*

***Bold, italicized text is information for the reader and is not part of the label.*** [Bracketed information is optional text.] Highlighted text is new. Strike-through (text) means removed



***Listed number can be updated to reflect subregistrant's certification***

NSF Listing

D2

Product Category: D2

PRODUCT CATEGORY DEFINITION: D2-

Antimicrobial agents not requiring rinse



[Instagram]



[Facebook]



[Twitter]

***can be displayed in black/white***

