

DANGER

KEEP OUT OF REACH OF CHILDREN

Corrosive. Causes severe eye and skin damage. Do not get in eyes, on skin or on clothing. Wear goggles or face shield and rubber gloves when handling. Harmful or fatal if swallowed. Avoid contamination of food.

RINSE EMPTY CONTAINER THOROUGHLY WITH WATER AND DISCARD IT. DO NOT REUSE EMPTY DRUM. RETURN TO DRUM RECONDITIONER OR DESTROY BY PERFORATING OR CRUSHING AND BURYING IN A SAFE PLACE AWAY FROM WATER SUPPLIES.

FIRST AID

In case of contact, immediately flush eyes or skin with plenty of water for at least 15 minutes. For eyes, call a physician. Remove and wash contaminated clothing before reuse.

If swallowed, drink promptly a large quantity of milk, egg whites, gelatin solution or if these are not available, drink large quantities of water. Avoid alcohol. Call a physician immediately.

ACCEPTED
34743-1
26 APR 1977



16
WAL-BEN INDUSTRIES, INC.
CARRIER CHEMICAL CO. DIVISION
516 CHICOPEE STREET
CHICOPEE, MASS. 01013

DANGER: KEEP OUT OF REACH OF CHILDREN
See other precautions on side panel.

ACTIVE INGREDIENT:
SODIUM HYPOCHLORITE ...
INERT INGREDIENT:

FOR SWIMMING POOL CARE

To establish a chlorine residual, add 10 oz. for each 15,000 gallons of water.
One quart of this product in 15,000 gallons of water will provide 2.0 PPM chlorine residual.
Test pool water frequently with a chlorine test kit to maintain the chlorine residual above 0.6 PPM at all times.

HOW BIG IS YOUR POOL?

If you do not know the number of gallons of water in your pool, use the following to arrive at an approximate figure.

If your pool is square or rectangular: Length * Width X Average Depth X 7.5 = total gallons.

If your pool is round: Diameter X Diameter X Depth X 5.9 = total gallons.

* Dimensions in feet.

STORE IN COOL PLACE AWAY FROM SUNLIGHT.

This product is toxic to fish. Treated effluent should not be discharged where it will drain into lakes, streams, ponds, or public water. Apply this product only as specified on this label.

Degrades with age. Use a test kit and increase dosage as necessary to obtain required level of available chlorine.

SODIUM HYPOCHLORITE BEST DOCUMENT AVAILABLE CONTENTS: 5 GAL.

EPA EST. NO. 034743-MA-01

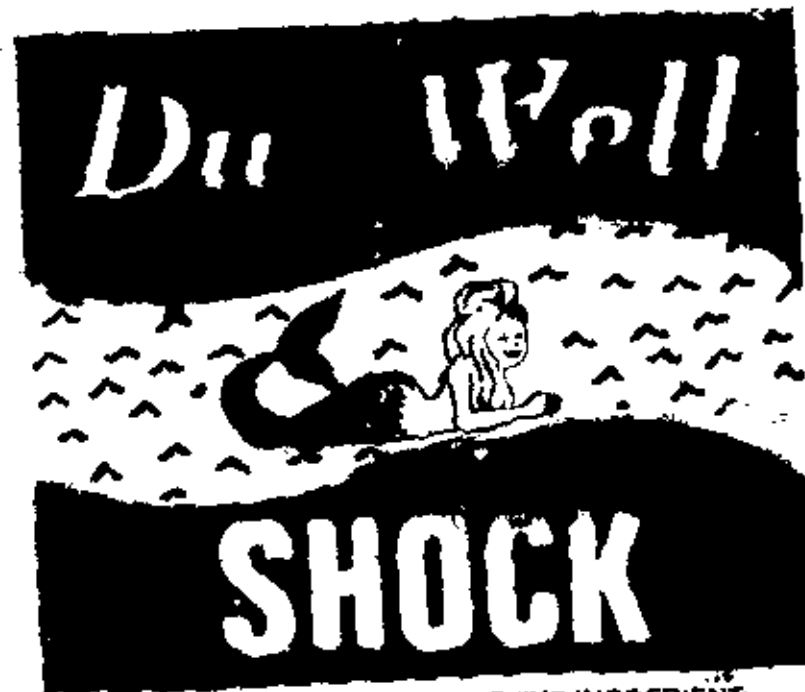
EPA REG. NO. 34743-1

17.5%

67.5%

100%

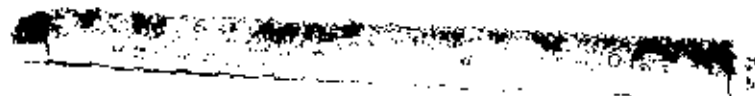
FRONT PART OF LABEL:



DANGER:
KEEP OUT OF REACH
OF CHILDREN
See other precautions on side panel.

ACTIVE INGREDIENT:
SODIUM HYPOCHLORITE...12.5%
INERT INGREDIENT:.....87.5%
100%

00000
00000



BEST DOCUMENT AVAILABLE

RIGHT SIDE OF LABEL:

DANGER: KEEP OUT OF REACH OF CHILDREN

FIRST AID: If on skin, wash with plenty of soap and water. If in eyes, flush with water for at least 15 minutes. Get medical attention. If swallowed, drink large quantities of milk, or gelatin solution, or if these are not available, drink large quantities of water. Do NOT give vinegar or other acids. Do NOT induce vomiting. Get prompt medical attention.

DIRECTIONS FOR USE:

FOR PRIVATE POOLS: Daily dosage should be carried out in the early morning or late evening. Pools with a high bathing load or exposed to high temperatures or strong sunlight will require extra dosing. A constant check for chlorine residual should be made and additions made as needed to maintain 0.6 to 1.0 ppm residual chlorine. For effective chlorination, the pH of the water should be maintained to the 7.2 to 7.6 range.

INITIAL CHLORINATION: Four fluid ounces of Du-Well Shock per 1,000 gallons of pool water is recommended whenever the pool is emptied and refilled. After initial treatment, allow to circulate in pool. Check chlorine residual. Do NOT use pool until residual is between 1.0 and 3.0 ppm as determined by a test kit.

REGULAR TREATMENT: Use 32 fluid ounces of Du-Well Shock per 10,000 gallons of pool water every day, even if the pool is not used. Pool should be treated as needed to maintain 0.6 to 1.0 ppm residual chlorine. Do NOT use pool until residual is between 1.0 and 3.0 ppm as determined by a test kit.

SUPERCHLORINATION: SUPERCHLORINATION is recommended every other week--more often during heavy use periods. Use Du-Well Shock at a rate of 1 gallon per 20,000 gallons of pool water. Apply in evening after pool has been closed. SUPERCHLORINATION is needed for algae control when continuous chlorine residuals have not been maintained and to destroy ammonia complexes that have formed in the pool. Do NOT use pool until residual is between 1.0 and 3.0 ppm as determined by a test kit.

NOTE: This product degrades with age. Use a chlorine test kit and increase dosage, as necessary, to obtain the required level of available chlorine.

DU-
WELL
SHOCK

LEFT SIDE OF LABEL:

DANGER: KEEP OUT OF REACH OF CHILDREN

DIRECTIONS FOR USE:

FOR WALLS, FLOORS, PORCELAIN: If dirty, pre-clean. Disinfect surfaces with solution of 2 ounces Du-Wall Shock in 9 gallons water (600 ppm available chlorine). Apply with mop or cloth. Allow solution to stand 10 minutes and rinse with clean water. Do NOT use on steel, aluminum, silver, nor apply with natural sponges.

FOR SANITIZING DISHES, TABLEWARE, and BEVERAGES in restaurants and bars: Pre-clean in normal way. Then immerse all surfaces in freshly prepared solution of 2 ounces Du-Wall Shock in 9 gallons water (Provides 200 ppm available chlorine). Keep in solution for at least 2 minutes or contact time specified by local regulations, and allow to air-dry without a potable water rinse. Do NOT use on steel, aluminum, silver, nor apply with natural sponges.

PUBLIC & SEMIPUBLIC POOLS: Follow State and Local Health Regulations regarding use of positive displacement feeders and maintenance of acceptable chlorine residual.

NOTE: This product degrades with age. Use a chlorine test kit and increase dosage, as necessary, to obtain the minimum required level of available chlorine.

PRECAUTIONARY STATEMENTS
HAZARDS TO HUMANS AND DOMESTIC ANIMALS

DANGER: Corrosive, may cause severe skin irritation or chemical burns to broken skin. Cause eye damage. Do NOT get in eyes, on skin, or on clothing. Wear goggles or face mask shield and rubber gloves when handling this product. Wash after handling. Avoid breathing vapors. Vacate poorly ventilated areas as soon as possible. Do NOT return indoors until odors have dissipated.

ENVIRONMENTAL HAZARDS: This pesticide is toxic to fish. Keep out of lakes, streams, or ponds. Treated effluent cannot be discharged into lakes, streams, ponds or public waters unless a discharge permit is obtained. For guidance, contact the release office of the Environmental Protection Agency.

PHYSICAL AND CHEMICAL HAZARDS: SERVICING AGENT: Mix only with water according to label directions. Mixing this product with gross filth such as feces, urine, etc., or with ammonia, acids, detergents or other chemicals will release hazardous gases irritating to eyes, lungs and mucous membranes.

STORAGE AND DISPOSAL: Store in cool, dry area away from direct sunlight. In case of spill, flood area with large quantities of water. Rinse empty container thoroughly with water and either return to manufacturer or discard by placing in trash collection or burying in an approved landfill. Product or rinseate that remains cannot be used should be diluted with water and disposed of in a sanitary sewer. Do NOT contaminate food or feed by storage, disposal, or cleaning of equipment.

This is to certify that the content of this package is properly described by name and is packaged and marked and is packed in proper condition for transportation according to the regulations prescribed by the Department of Transportation.

KAL-BER INDUSTRIES, INC.
DU-WALL PRODUCTS DIVISION
516 CHICOPEE STREET
CHICOPEE, MASS. 01013

EPA EST. NO. 03474-NA-01
EPA REG. NO. 34743-1

NET CONTENTS:
1 gal. (3.79 L)

BEST DOCUMENT AVAILABLE

DANGER

BEST DOCUMENT AVAILABLE

ACCEPTED
34743-1
26 APR 1977

KEEP OUT OF REACH OF CHILDREN

Corrosive. Causes severe eye and skin damage. Do not get in eyes, on skin or on clothing. Wear goggles or face shield and rubber gloves when handling. Harmful or fatal if swallowed. Avoid contamination of food.

RINSE EMPTY CONTAINER THOROUGHLY WITH WATER AND DISCARD IT. DO NOT REUSE EMPTY DRUM. RETURN TO DRUM RECONDITIONER OR DESTROY BY PERFORATING OR CRUSHING AND BURYING IN A SAFE PLACE AWAY FROM WATER SUPPLIES.

FIRST AID

In case of contact, immediately flush eyes or skin with plenty of water for at least 15 minutes. For eyes, call a physician. Remove and wash contaminated clothing before reuse.

If swallowed, drink promptly a large quantity of milk, egg whites, gelatin solution or if these are not available, drink large quantities of water. Avoid alcohol. Call a physician immediately.

Du - Well



SO-CLEAR

WAL-BEN INDUSTRIES, INC.
CARRIER CHEMICAL CO. DIVISION
516 CHICOPEE STREET
CHICOPEE, MASS. 01013

DANGER: KEEP OUT OF REACH OF CHILDREN

See other precautions on side panel.

ACTIVE INGREDIENT:
SODIUM HYPOCHLORITE

INERT INGREDIENT:

BEST DOCUMENT AVAILABLE

FOR SWIMMING POOL CARE

To establish a chlorine residual, add 10 oz. for each 15,000 gallons of water. One quart of this product in 15,000 gallons of water will provide 2.0 PPM chlorine residual.

Test pool water frequently with a chlorine test kit to maintain the chlorine residual above 0.6 PPM at all times.

HOW BIG IS YOUR POOL ?

If you do not know the number of gallons of water in your pool, use the following to arrive at an approximate figure.

If your pool is square or rectangular Length* X Width X Average Depth X 7.5 -- total gallons.

If your pool is round Diameter X Diameter X Depth X 5.9 total gallons.

* Dimensions in feet

STORE IN COOL PLACE AWAY FROM SUNLIGHT.

This product is toxic to fish. Treated effluent should not be discharged where it will drain into lakes, streams, ponds, or public water. Apply this product only as specified on this label.

Degrades with age. Use a test kit and increase dosage as necessary to obtain required level of available chlorine."

12.5%

87.5%

100%

SODIUM HYPOCHLORITE BEST DOCUMENT AVAILABLE CONTENTS: 5 GAL.

EPA EST. NO. 034743-MA-01

EPA REG. NO. 34743-1